



Photo 1. Photo taken from north entrance, facing Southeast. Note the prominent weeds (Kochia, Russian thistle, Field Bindweed, and Canada thistle) throughout this location. Kochia (*Kochia sp.*) and Russian thistle (*Salsola sp.*) are debris and will break off, encroach upon adjacent lands and needs to be removed from entire location.



Photo 2. Photo taken from north entrance, facing South. Weed maintenance is needed.



Photo 3. Photo taken from north entrance, facing West.



Photo 4. Photo taken from northern location, facing West. Note the prominent weed debris (Kochia and Russian thistle). Weed maintenance is needed.



Photo 5. Photo taken from northwest location, facing Northeast. Note the prominent weeds (Kochia, Russian thistle, and Canada thistle). Weed maintenance is needed.



Photo 6. Photo taken from northwest location, facing East. Need to reclaim and minimize areas where production or facilities are no longer necessary.



Photo 7. Photo taken from northwest location, facing South.



Photo 8. Photo taken from southwest location, facing East. Need to reclaim and minimize areas where production or facilities are no longer necessary.



Photo 9. Photo taken from southern location, facing West. Need to reclaim and minimize areas where production or facilities are no longer necessary. Note the prominent weeds (Kochia, Russian thistle, and Canada thistle). Weed maintenance is needed.



Photo 10. Photo taken from southern location, facing East. Need to reclaim and minimize areas where production or facilities are no longer necessary. Note the prominent weeds (Kochia, Russian thistle, and Canada thistle). Weed maintenance is needed.



Photo 11. Photo taken from southeast location, facing Northeast. Need to reclaim and minimize areas where production or facilities are no longer necessary. Note the prominent weeds (Kochia, Russian thistle, and Canada thistle). Weed maintenance is needed.



Photo 12. Photo taken from southeast location, facing North. Need to reclaim and minimize areas where production or facilities are no longer necessary. Note the prominent weeds (Kochia, Russian thistle, and Canada thistle). Weed maintenance is needed.



Photo 13. Photo taken from southwest location, facing East towards reference area.



Photo 14. Photo taken from northern well pad location, facing Northwest. Need to remove road base soil pile.



Photo 15. Photo taken from northwestern location, facing West. Need to remove debris.



Photo 16. Photo taken from southern location, facing Northwest. Note pooling water in center of photo. Need to reclaim and minimize areas where production or facilities are no longer necessary.



Photo 17. Photo taken from southern location, facing East. Note pooling water in center of photo. Need to reclaim and minimize areas where production or facilities are no longer necessary.



Photo 18. Photo taken from southeastern location, facing East. Unused or unneeded equipment needs to be removed. Weed maintenance is needed.

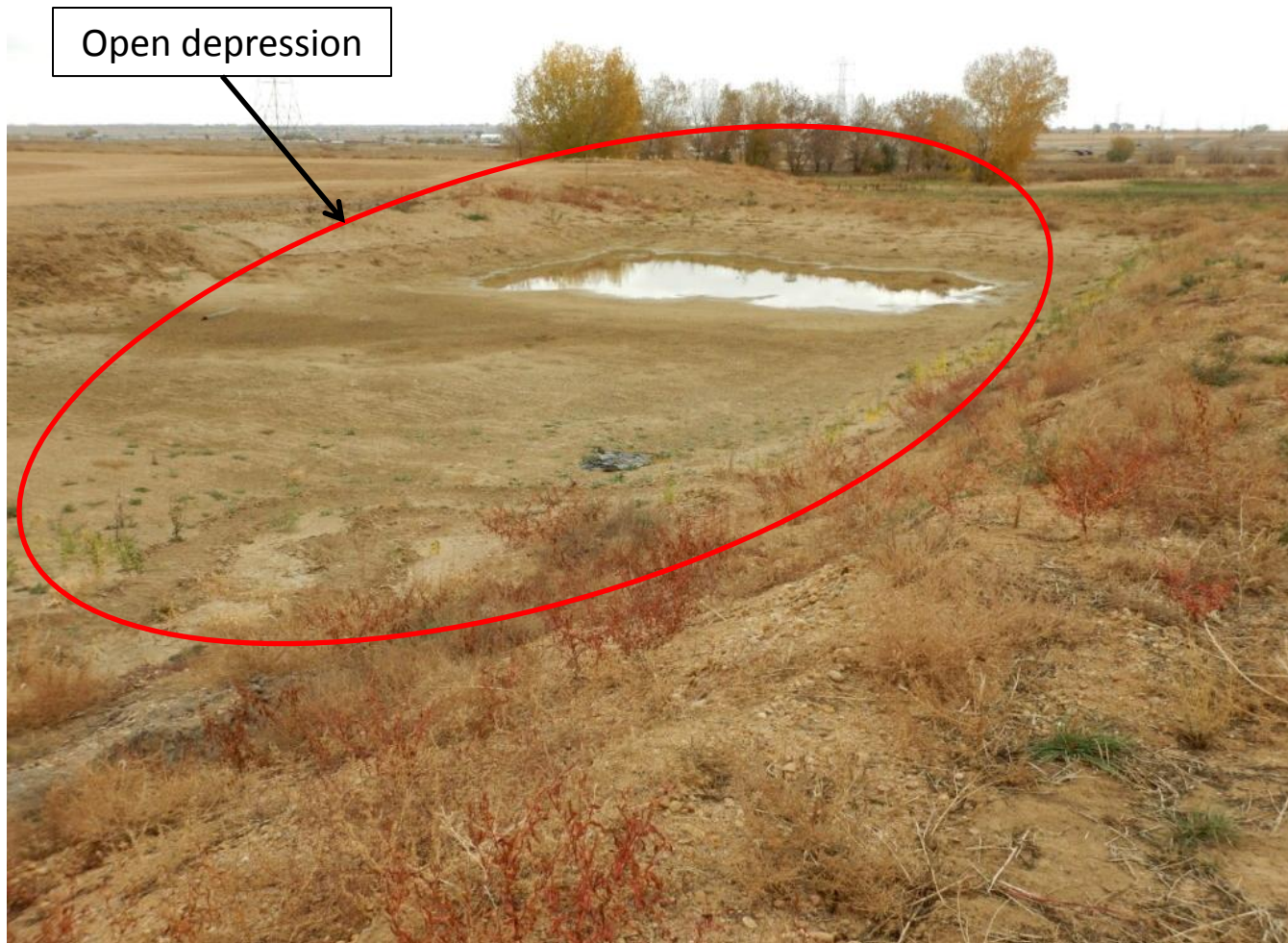


Photo 19. Photo taken from southeast location, facing East. Open depression needs to be reclaimed and contoured back to the reference cropland landscape.



Photo 20. Photo taken from the southeast location. Need to stabilize location. Weed maintenance is needed.



Photo 21. Photo taken from east location, facing West. Sediment movement and erosion needs to be controlled. Weed maintenance is needed.



Photo 22. Photo taken from east location, facing West. Sediment movement and erosion needs to be controlled. Weed maintenance is needed.



Photo 23. Photo taken from east entrance area, facing West. Kochia (*Kochia sp.*) is debris and will break off, encroach upon adjacent lands and needs to be removed from entire location.

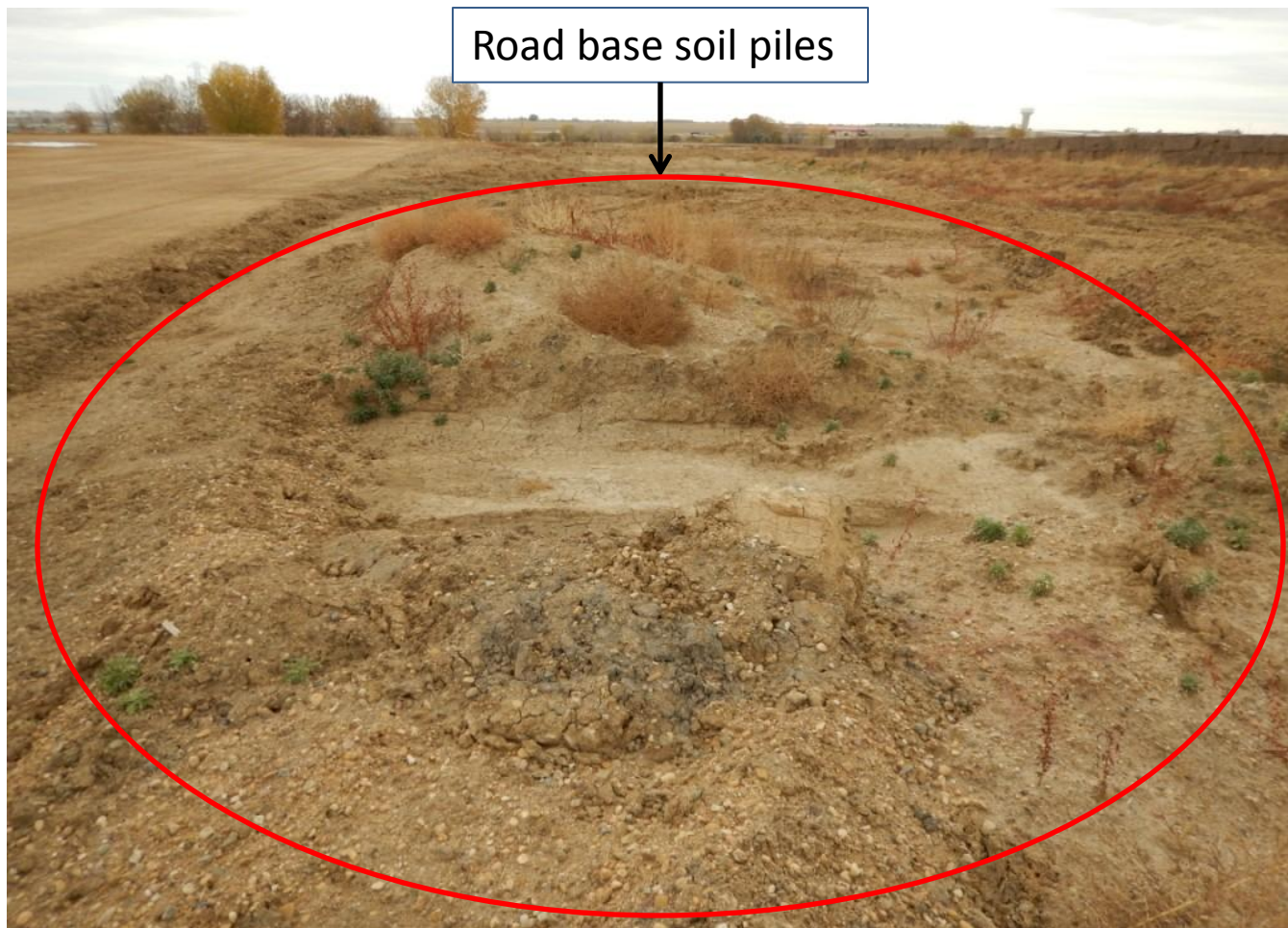


Photo 24. Photo taken from southeastern location, facing East. Need to remove road base soil piles and reclaim area.



Photo 25. Musk thistle (*Carduus nutans*) observed throughout location. Weed maintenance is needed.



Photo 26. Canada thistle (*Cirsium arvense*) observed throughout location. Weed maintenance is needed.

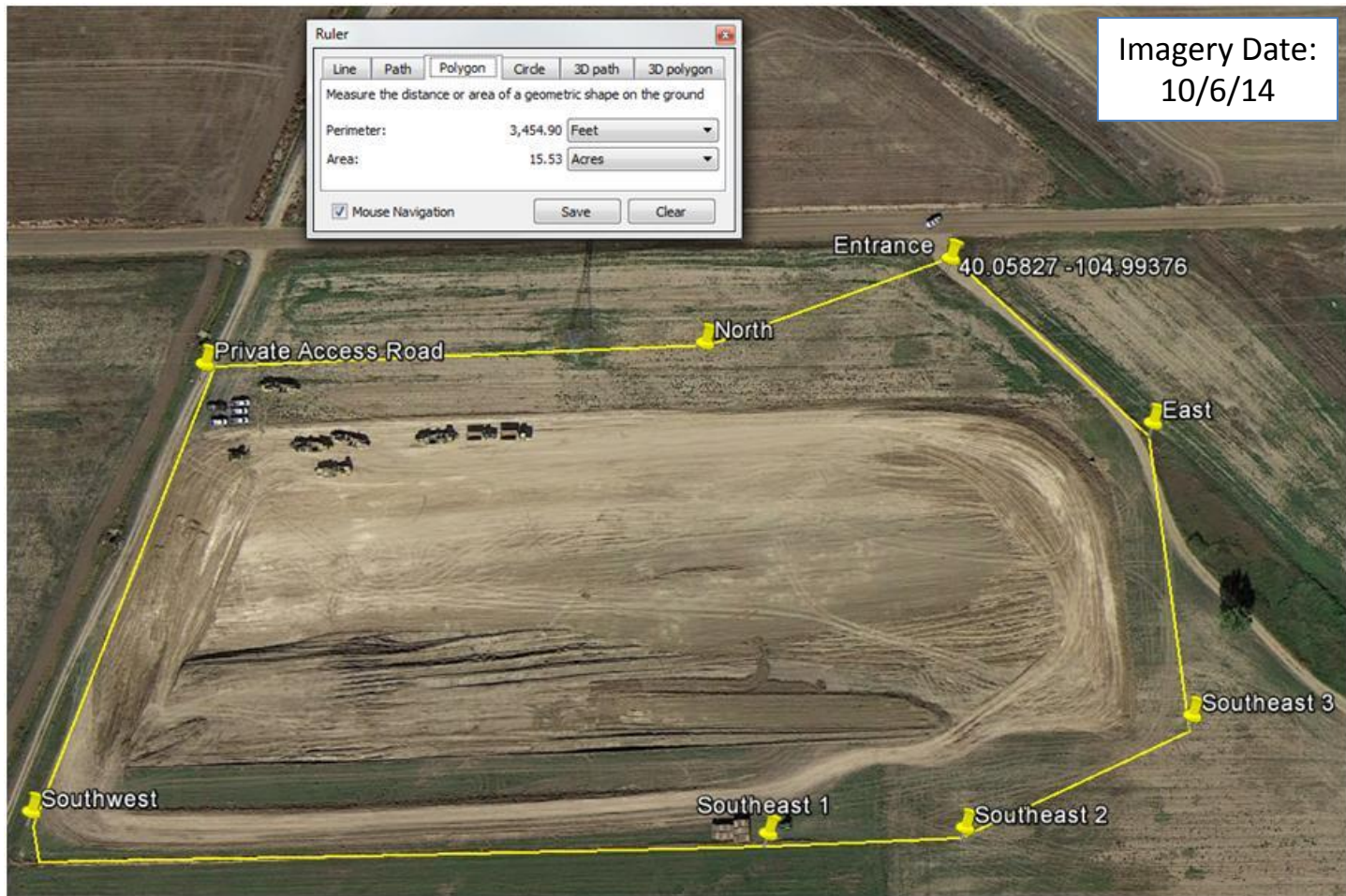


Photo 27. The perimeter, in yellow, illustrates the disturbance boundary as of 10/30/15. Total disturbance equals 15.53 acres.