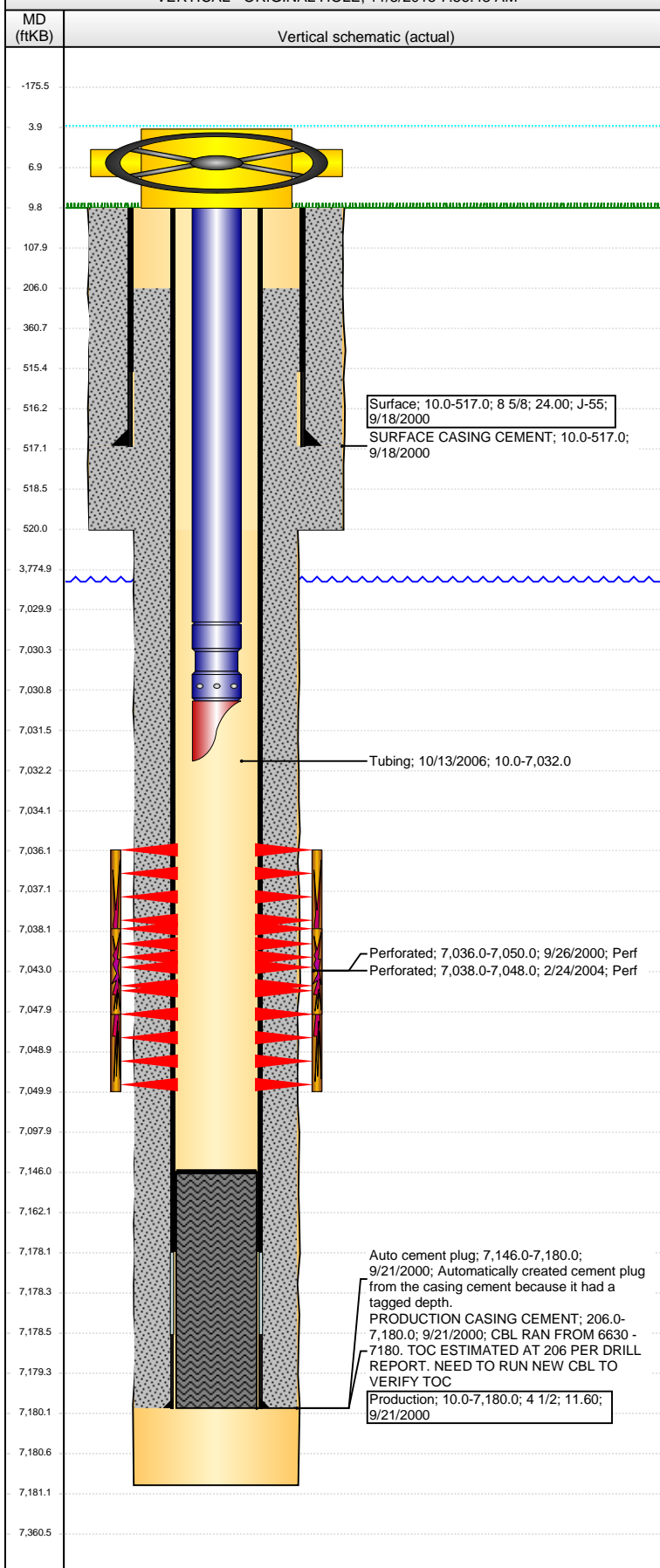


Well Name: WILMOTH 06-14

VERTICAL - ORIGINAL HOLE. 11/5/2015 7:56:43 AM



Well Header								
API 05-123-20025		Business Unit DJ BASIN		District 15		Well Config VERTICAL		
Original KB Elevation (ft) 4,789.00		KB - GL / MSL (ftKB) 10.00		Spud Date 9/17/2000		P & A Date		
Comment CBL RAN FROM 6630 - 7180. TOC ESTIMATED AT 206 PER DRILL REPORT. NEED TO RUN NEW CBL TO VERIFY TOC								
Directions To Well								
Congressional Location								
Quarter 1	Quarter 2 NE	Quarter 3 SE	Quarter 4 NE	Section 6	Township 4 N	Twtnshp N...	Range 64	Rng E/W Dir W
Bottom Hole Location								
North-South Distance (ft)		From N or S Line		East-West Distance (ft)			From E or W Line	
Plug Back Total Depths								
Date	Depth (ftKB)	Method			Com			
9/21/2000	7,142.3	CASING TALLY			TOP OF FLOAT COLLAR			
9/25/2000	7,144.0	CASED HOLE LOG			CBL DEPTH LOGGER			
3/1/2004	7,146.0	TAG			TAG & CIRCULATE			
Wellbore Sections								
Section Des		Size (in)		Act Top, MD (ftKB)		Act Btm, MD (ftKB)		
SURFACE		12 1/4		10.0		520.0		
PRODUCTION		7 7/8		520.0		7,181.0		
Zone Statuses								
Zone Name	Status Date	Status	Fluid Type	Job	Prod Method			
CODELL	10/7/2000	PR	Gas	DRILLING/CO...	Sales			
CODELL	3/9/2004	PR	Gas	RE-FRAC, 2/20...	Flowing			
Casing Strings								
Surface, 517.0ftKB								
Casing Description	Run Date	OD (in)	Wt/Len (l...	Grade	Top, MD (ft...	MD (ftKB)		
Surface	9/18/2000	8 5/8	24.00	J-55	10.0	517.0		
Production, 7,180.0ftKB								
Casing Description	Run Date	OD (in)	Wt/Len (l...	Grade	Top, MD (ft...	MD (ftKB)		
Production	9/21/2000	4 1/2	11.60		10.0	7,180.0		
Cement								
Description SURFACE CASING CEMENT				Top Depth (ftKB) 10.0		Bottom Depth (ftKB) 517.0		
Description PRODUCTION CASING CEMENT				Top Depth (ftKB) 206.0		Bottom Depth (ftKB) 7,180.0		
Tubing Strings								
Tubing Description	Run Date	String...	ID (in)	Wt (lb/ft)	Grade	Len (ft)	Set De...	
Tubing	10/13/2006	2 3/8	1.995	5.80	N-80	7,022.00		
Tubing Components								
Item Des	OD (in)	Wt (lb/ft)	Grade	Jts	Len (ft)	Btm (ftKB)	Btm (TVD) (ftKB)	
Tubing	2 3/8	5.80	N-80	228	7,020.00	7,030.0		
Seating Nipple	2 3/8				1.00	7,031.0		
Mule Shoe	2 3/8				1.00	7,032.0		
Perforation Data								
Zone	Bnch/St g	Entered Shot Total	Top (ftKB)		Btm (ftKB)		Date	
CODELL, ORIGINAL HOLE		56	7,036.00		7,050.00		9/26/2000	
CODELL, ORIGINAL HOLE		40	7,038.00		7,048.00		2/24/2004	
Stimulations & Treatments								
Date 10/4/2000	Zone CODELL, ORIGINAL HOLE			Primary Job Type DRILLING/COMPLETION - ORIGINAL				
Technical Result		Tech Result Details			Tech Result Note			
Comment								
Date 2/27/2004	Zone CODELL, ORIGINAL HOLE			Primary Job Type RE-FRAC				
Technical Result		Tech Result Details			Tech Result Note			
Comment								

Well Name: WILMOTH 06-14

VERTICAL - ORIGINAL HOLE, 11/5/2015 7:56:46 AM

Other In Hole

Run Date	Des	OD (in)	Top (ftKB)	Btm (ftKB)
10/22/2015				

Logs

Date	Type	Top, MD (ftKB)	Btm, MD (ftKB)

