



Well Name: PA 332-27
Surface Location: DOE 2-W-27 Pad
North American Datum 1983 , US State Plane 1983 , Colorado Central Zone
Ground Elevation: 5856.00

+N/-S
0.00

+E/-W
0.00

Northing
1615087.81

Easting
2300865.49

Latitude
39.496017

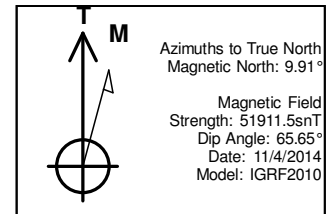
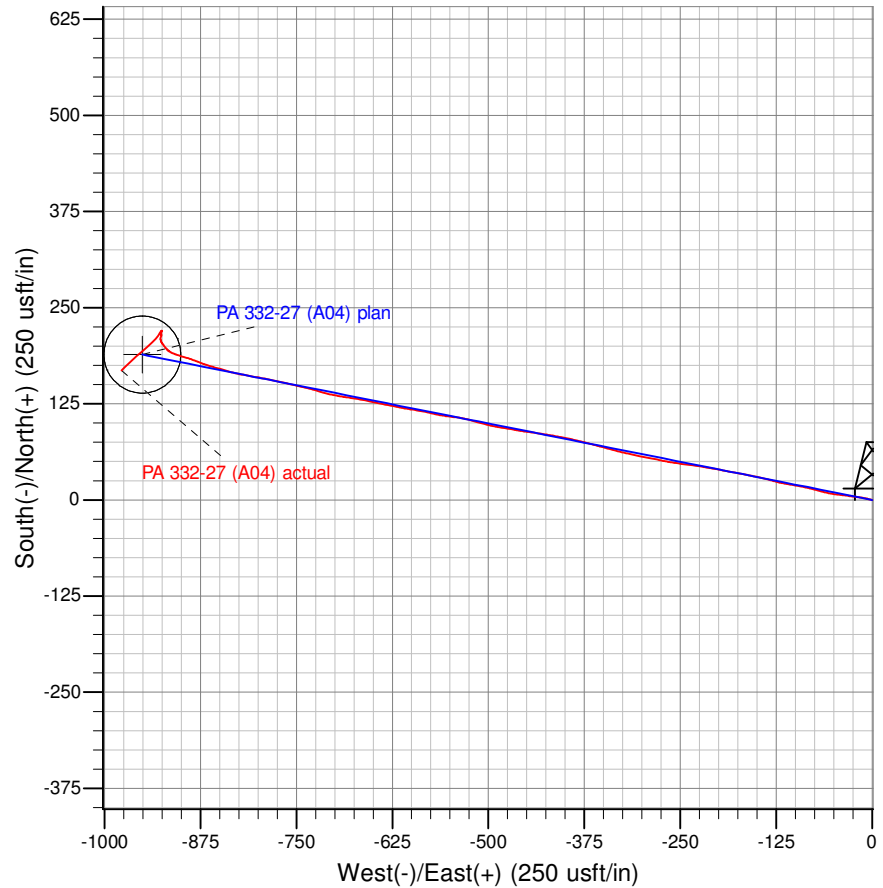
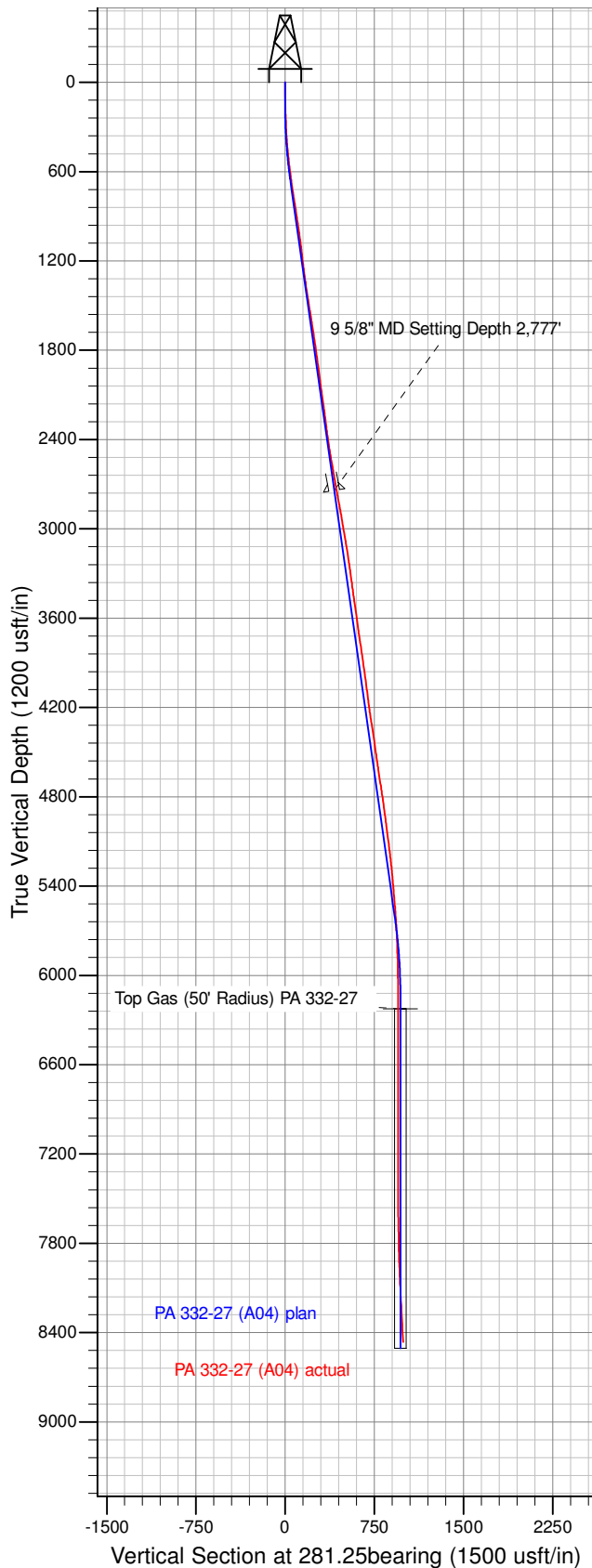
Longitude
-107.977747

Slot
A04

KELLY BUSHING @ 5882.00usft (Nabors 576 (26' RKB) mab)

ANNOTATIONS

TVD	MD	Inc	Azi	+N/-S	+E/-W	Vsect	Departure	Annotation
160.00	160.00	0.00	0.00	0.00	0.00	0.00	0.00	Start Build 2.00
660.84	663.43	10.07	281.25	8.61	-43.27	44.12	44.12	Hold 10.07° Inc, 281.25°
5623.16	5703.36	10.07	281.25	180.49	-907.46	925.24	925.24	Begin Drop -2.00°/100'
6124.00	6206.79	0.00	0.00	189.09	-950.73	969.36	969.36	Vertical
6224.00	6306.79	0.00	0.00	189.09	-950.73	969.36	969.36	Top Gas
8504.00	8586.79	0.00	0.00	189.09	-950.73	969.36	969.36	TD at 8586.79



Project: PA 27-06S-095W
Site: DOE 2-W-27 Pad
Well: PA 332-27
Design #2 23Apr14 mab