



Scale: 5" / 100'
Measured Depth Log

Well Name Walton J-25HN

Location 40.550103, -104.832880

State Colorado

Country USA

API Number 05-123-41417

Geographic Region DJ Basin

Spud Date 7/16/2015

Surface Coordinates Sec.25-T7N-R67W

872°FNL, 252°FEL

County Weld

Rig Number Frontier 10

AFE # 2014WELDJ.25HN

Field Wattenberg

Drilling Completed 9/10/2015

Bottom Hole Coordinates Projected:

Sec.25-T7N-R67W
2140°FNL, 470°FWL

Ground Elevation 4978'

K.B. Elevation 5000.5'

Logged Interval 6000' To 12219'

Total Depth 12219'

Formation C Chalk

Type of Drilling Fluid MMH

Operator

Company Bayswater Exploration and Production LLC.

Address 730 17th Street, Suite 610
Denver, CO 80202

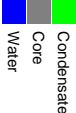
Geologist

Name Charles Trodick, Tracy Lawson

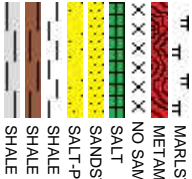
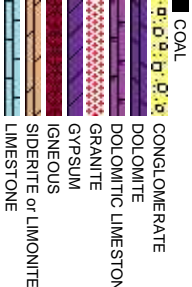
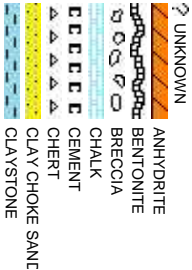
Company COLUMBINE LOGGING, INC.

Address 602 S. LIPAN ST.
DENVER, CO 80223

Zone Color Coding



Rock Types



Accessories

Fossils

	GASTROPOD		ARGILLITE GRAIN		HEAVY MINERAL
	INOCERAMUS		B BENTONITE		K KAOLIN
	OOLITE		BIT BITUMENOUS SUBSTANCE		M MARCASITE
	OSTRACOD		BRECCIA FRAGMENTS		TT MARLSTONE
	BELEMNITE		CALCAREOUS		U MICACEOUS
	BIOCLASTIC		CARBONACEOUS FLAKES		M MINERAL CRYSTALS
	BRACHIOPOD		CHERT		N NODULES
	BRYOZOA		COAL - THIN BEDS		PHOSPHATE PELLETS
	CEPHALOPOD		DOLOMITIC		P PYRITE
	CORAL		FELDSPAR		S SALT CAST
	CRINOID		FERRUGINOUS PELLET		S SANDY
	ECHINOID		FERRUGINOUS		S SIDERITE
	FISH		GLAUCONITE		S SILICEOUS
	FORAMINIFERA		GYPSEFEROUS		S SILTY
	F FOSSIL		TUFFACEOUS		T TUFFACEOUS

Stringer

	ANHYDRITE STRINGER
	BENTONITE STRINGER
	COAL STRINGER
	DOLOMITE STRINGER
	GYPSEUM STRINGER
	LIMESTONE STRINGER
	MARLSTONE (CALC) STRG
	MARLSTONE (DOL) STRG
	SANDSTONE STRINGER
	SHALE STRINGER
	SILTSTONE STRINGER

Other Symbols

Oil Show

	P PINPOINT		DST INTERVAL		E EARTHY
	V VUGGY		FAULT		FX FINELYXLN
	D DEAD		FORMATION TOP		DS DRILL STEM TEST
	E EVEN		GAS SHOW		MN DEPTH
	Q QUESTIONABLE		OIL SHOW		MN DEPTH
	S SPOTTED STAINING		CONNECTION (UP)		MN DEPTH
	CONNECTION (DOWN)		ANGULAR		PS PACKSTONE

Engineering

	CONNECTION (DOWN)		NORMAL FAULT		R ROUNDED
	E EARTHY		OVERTURNED STRATA		S SUBANG
	F FENESTRAL		REVERSE FAULT		S SUBRAND
	F FRACTURE		CASING		Textures
	INTERCRYSTALLINE		SIDEWALL CORE (LEFT)		P POOR
	INTERCOLITIC		SIDEWALL CORE (RIGHT)		W WELL
	MOLDIC		SLIDE		C CHALKY
	O ORGANIC		SURVEY		C CRYPTOXLN

Rounding

	G GRAINSTONE
	L LITHOGRAPHIC
	M MICROXLN
	M MUDSTONE

Porosity

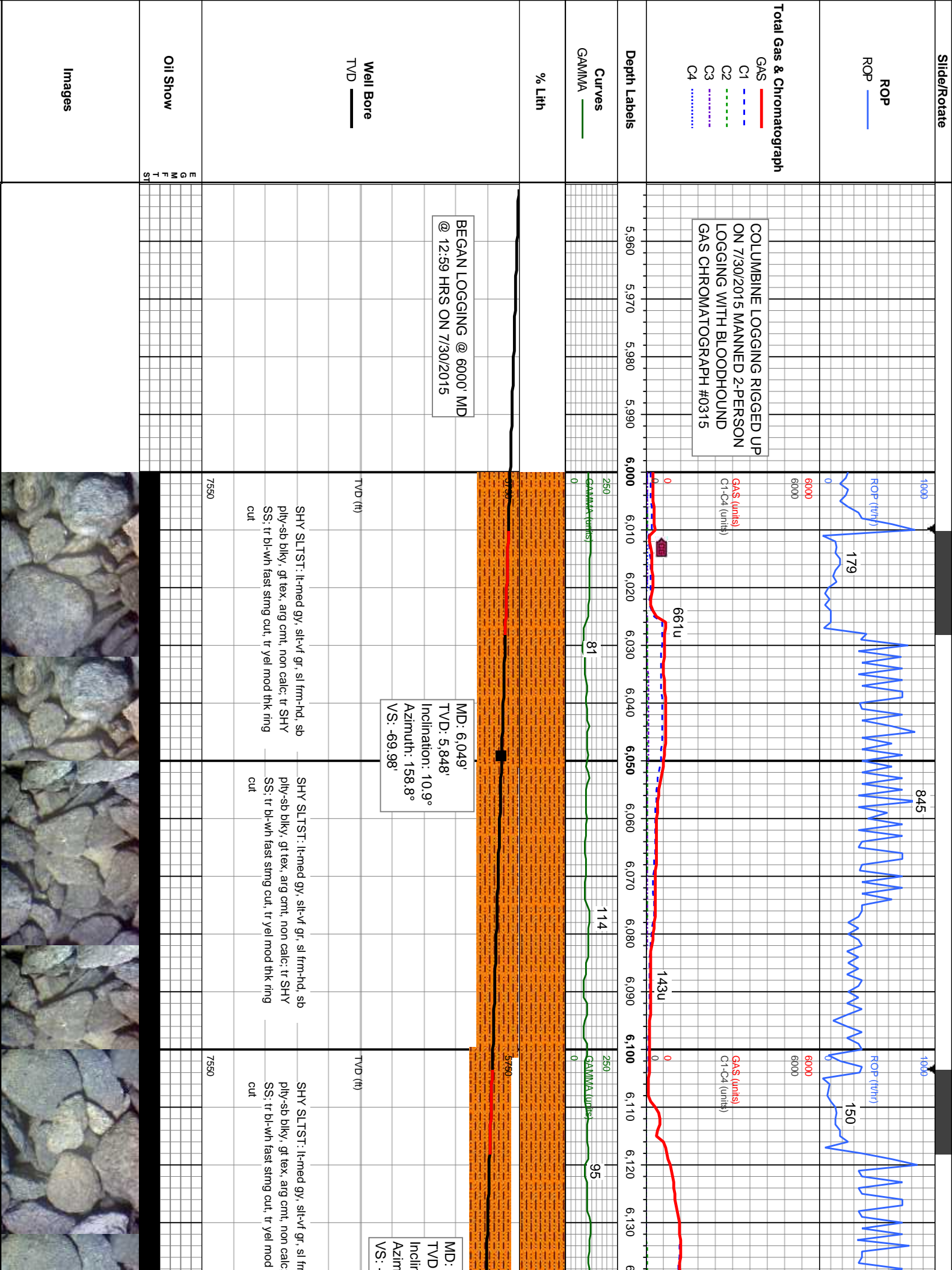
	CONNECTION (DOWN)		ANGULAR		PS PACKSTONE
	CONNECTION GAS		NORMAL FAULT		W WACKESTONE
	CONNECTION GAS (LEFT)		OVERTURNED STRATA		S SUBANG
	TRIP GAS		REVERSE FAULT		S SUBRAND
	TRIP GAS (LEFT)		CASING		Textures
	DOWN TIME GAS		SIDEWALL CORE (LEFT)		P POOR
	DOWN TIME GAS (LEFT)		SIDEWALL CORE (RIGHT)		W WELL
	CORE - LOST		SLIDE		C CHALKY
	CORE - RECOVERED		SURVEY		C CRYPTOXLN

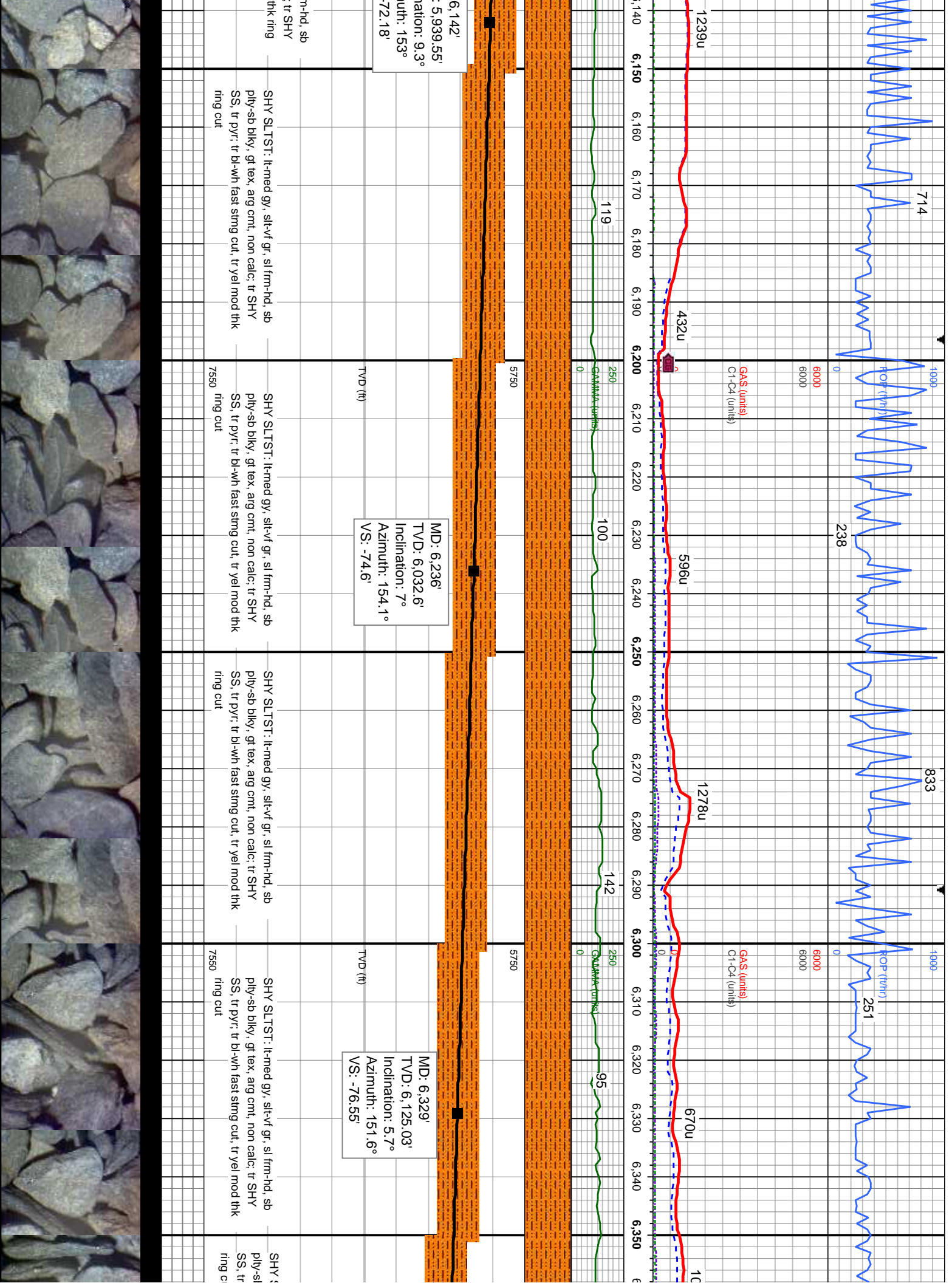
Sorting

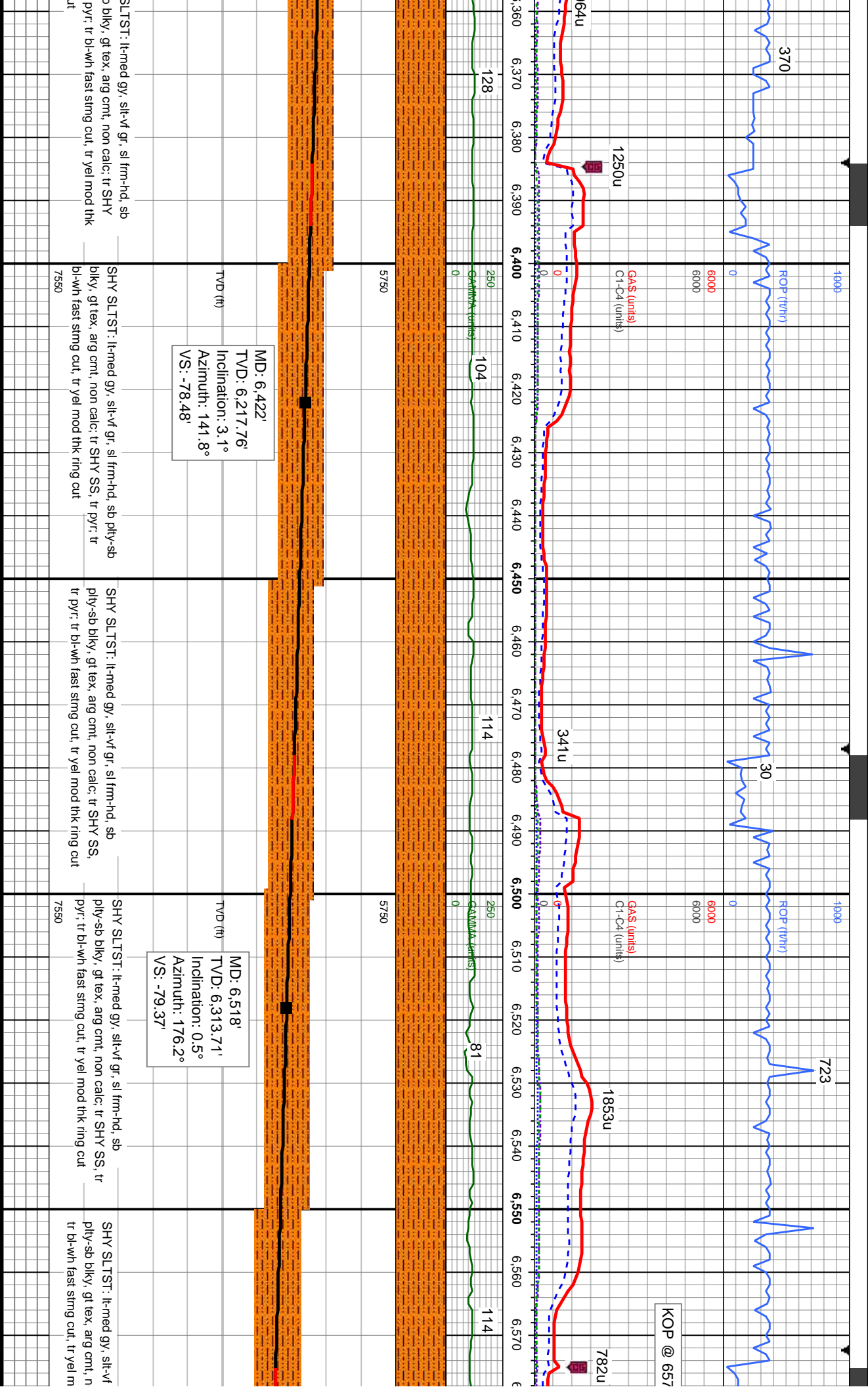
	M MODERATE
--	------------

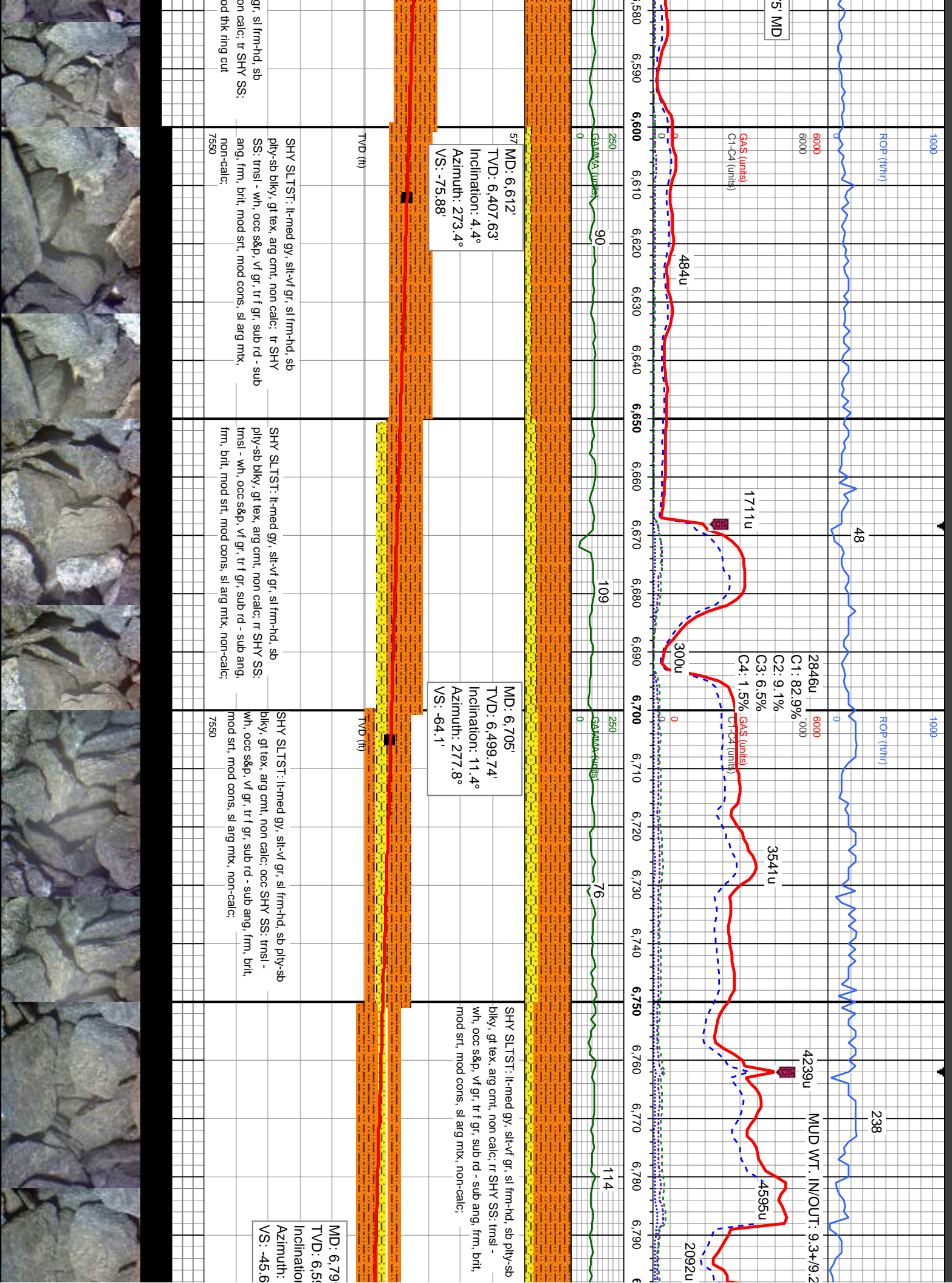
Gas
Pressure
Seal

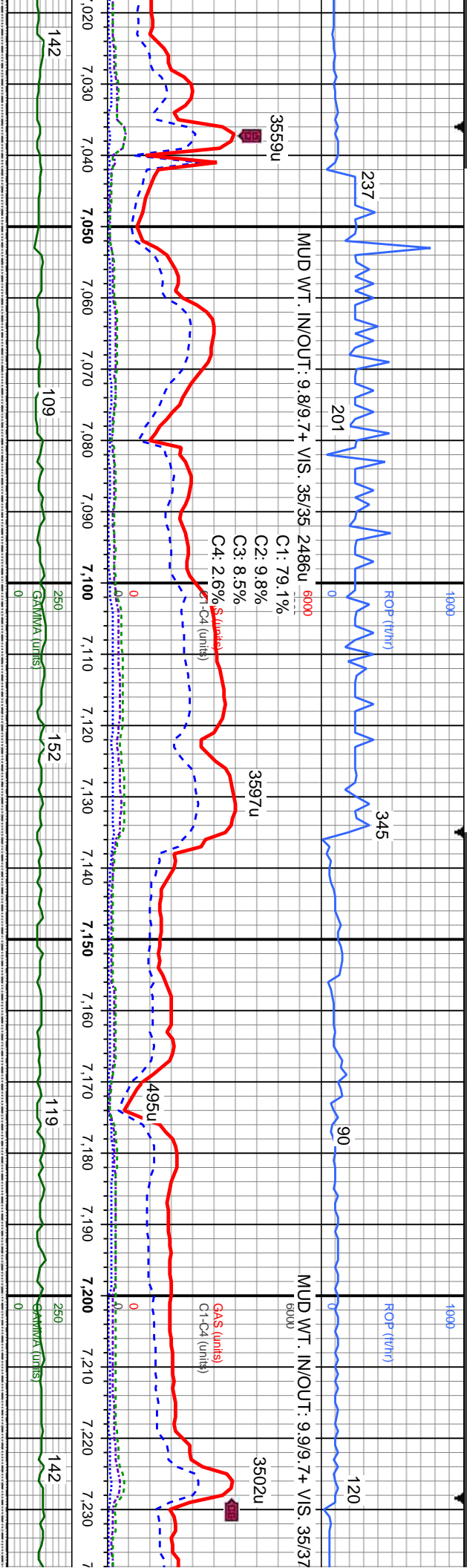
SHALY SANDSTONE
SHALY SILTSTONE
SILTY SHALE
SILTSTONE
TILL
TUFF
WELDED TUFF
GRAY











gy, occ dk gy-blk silt-vf gr, sl
ly, gt tex, arg cnt, sh incl,
H, med-dk gy, silt-mic gr, sl
-sb rthy tex, mot ip, non-calc;

SHY SLTST: lt-med gy, occ dk gy-blk silt-vf gr, sl
frm-hd, sb ply-sb blkly, gt tex, arg cnt, sh incl,
non-calc; rr SLTY SH: med-dk gy, silt-mic gr, sl frm,
sb ply-ply, rthy-sb rthy tex, mot ip, non-calc;

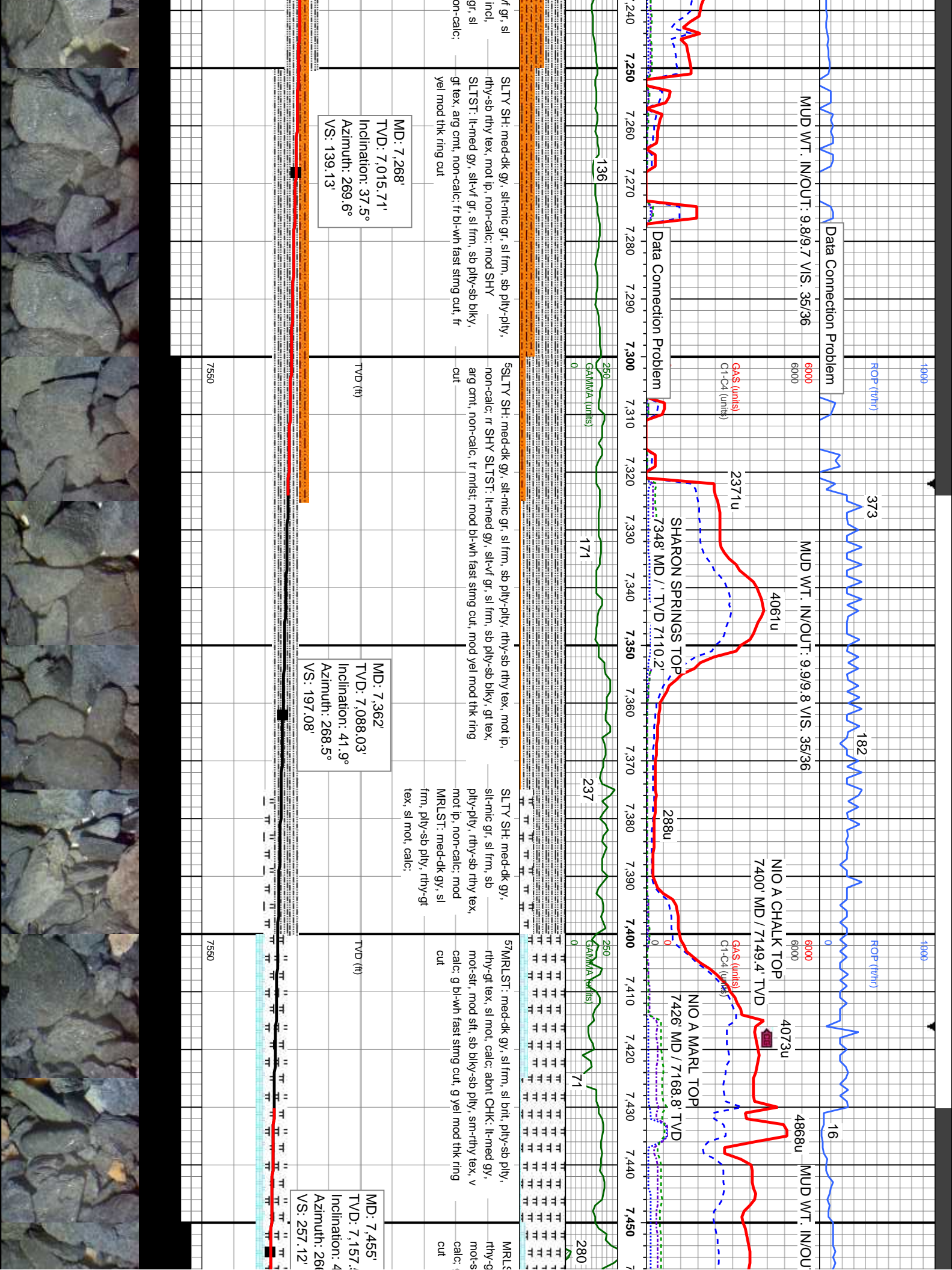
SHY SLTST: lt-med gy, occ dk gy-blk silt-vf gr, sl
frm-hd, sb ply-sb blkly, gt tex, arg cnt, sh incl,
non-calc; rr SLTY SH: med-dk gy, silt-mic gr, sl
frm, sb ply-ply, rthy-sb rthy tex, mot ip, non-calc;

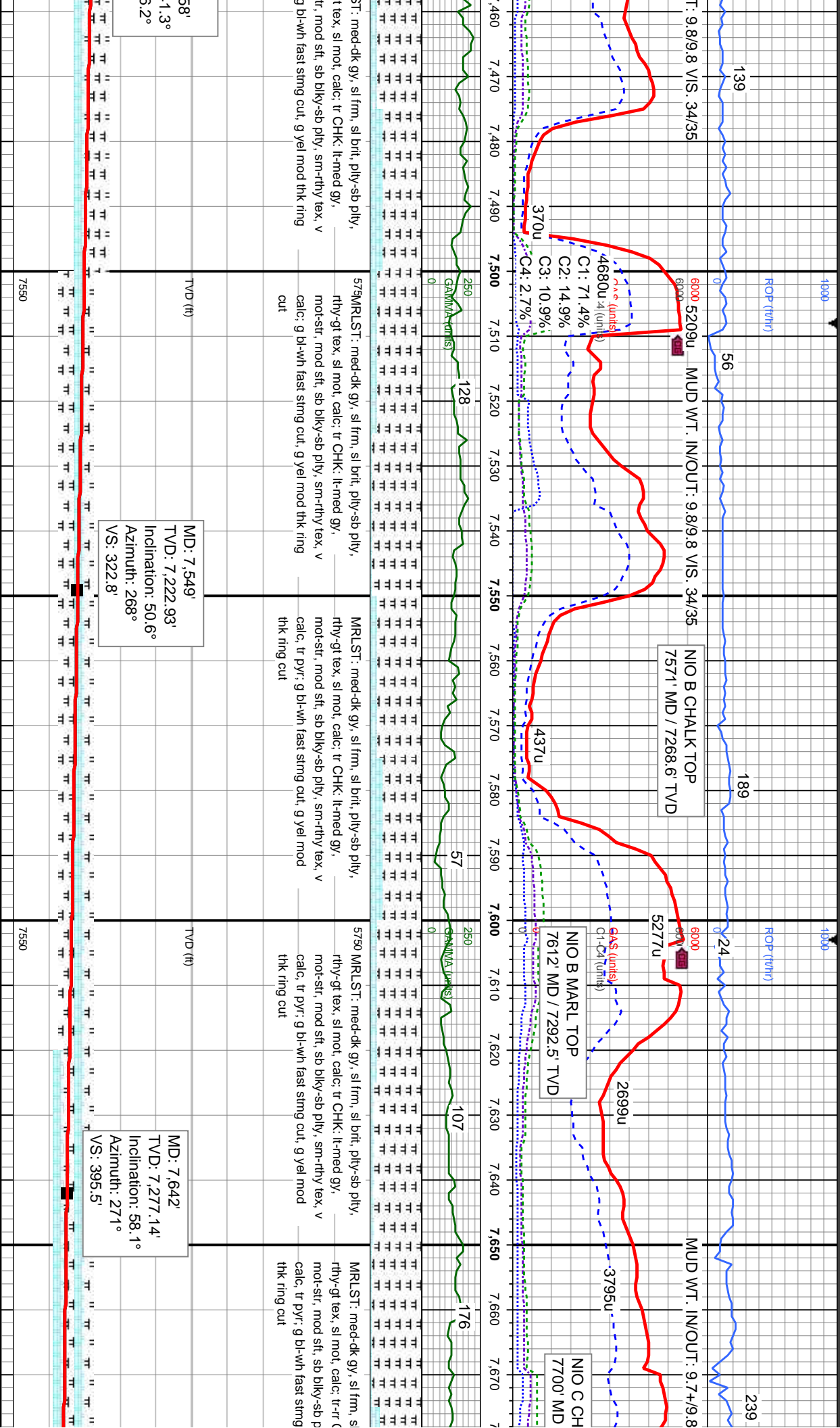
SHY SLTST: lt-med gy, occ dk gy-blk silt-vf gr, sl
frm-hd, sb ply-sb blkly, gt tex, arg cnt, sh incl,
non-calc; rr SLTY SH: med-dk gy, silt-mic gr, sl
frm, sb ply-ply, rthy-sb rthy tex, mot ip, non-calc;

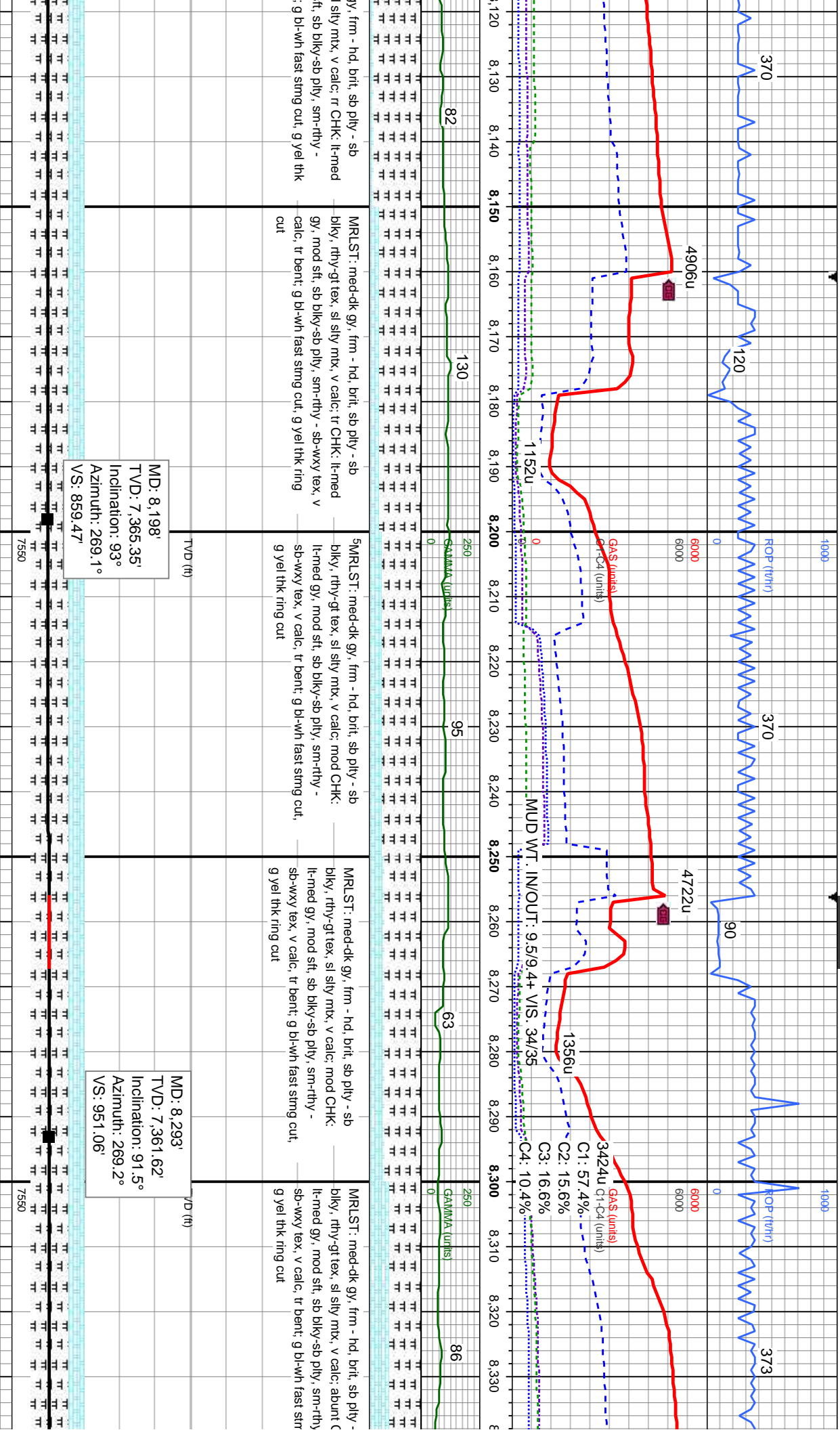
MD: 7,081'
TVD: 6,854.19'
Inclination: 27.3°
Azimuth: 266.9°
VS: 48.34'

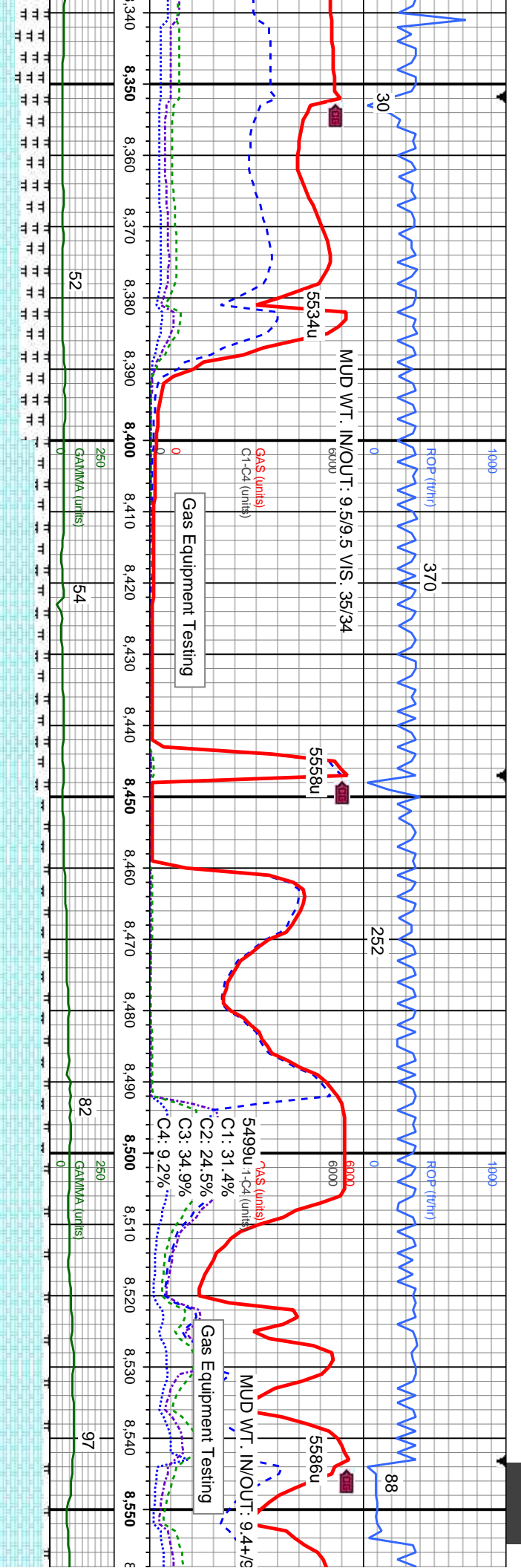
MD: 7,174'
TVD: 6,936.6'
Inclination: 27.9°
Azimuth: 268.5°
VS: 90.18'











CHK: lt-med gy, mot-str, mod stf, sb blkly-sb pily, sm-rthy - sb-wxy tex, v calc; occ MRLST: med-dk gy, sl frm, brit, pily-sb pily, rthy-gt tex, sl sily mtz, v calc, tr bent; g bl-wh fast string cut, g yel mod thk ring cut

CHK: lt-med gy, mot-str, mod stf, sb blkly-sb pily, sm-rthy - sb-wxy tex, v calc; occ MRLST: med-dk gy, sl frm, brit, pily-sb pily, rthy-gt tex, sl sily mtz, v calc, tr bent; g bl-wh fast string cut, g yel mod thk ring cut

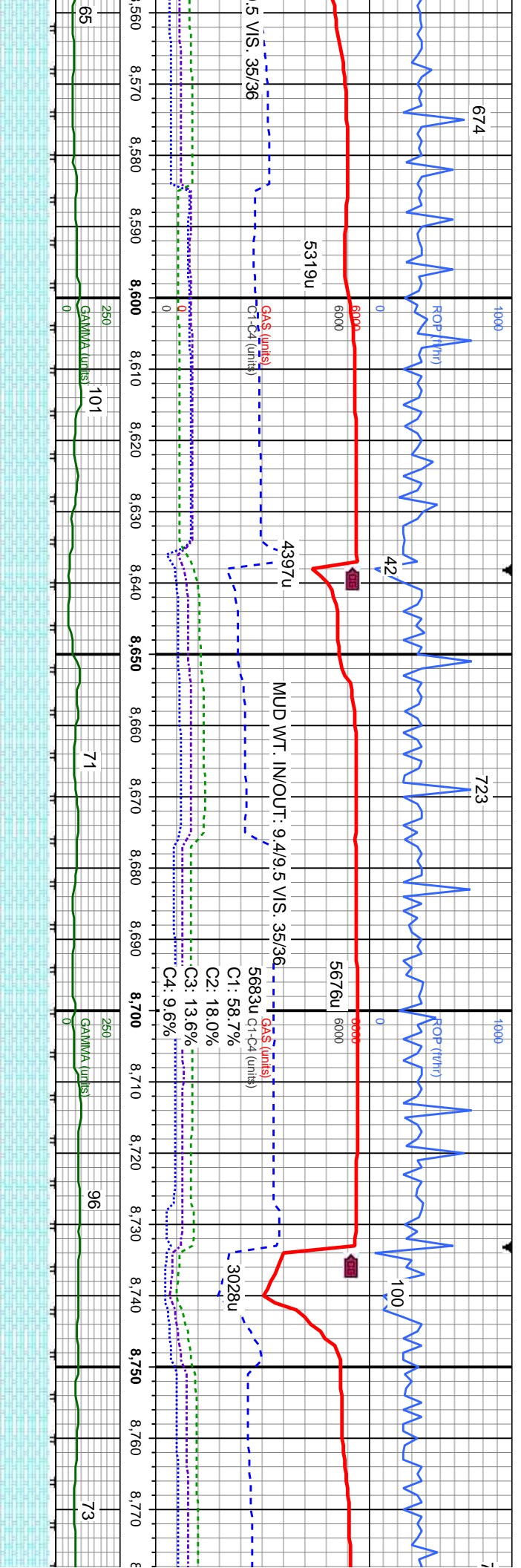
CHK: lt-med gy, mot-str, mod stf, sb blkly-sb pily, sm-rthy - sb-wxy tex, v calc; occ MRLST: med-dk gy, sl frm, brit, pily-sb pily, rthy-gt tex, sl sily mtz, v calc, tr bent; g bl-wh fast string cut, g yel mod thk ring cut

CHK: lt-med gy, mot-str, mod stf, sb blkly-sb pily, sm-rthy - sb-wxy tex, v calc; r MRLST: med-dk gy, sl frm, brit, pily-sb pily, rthy-gt tex, sl sily mtz, v calc, tr bent; g bl-wh fast string cut, g yel mod thk ring cut

MD: 8,389'
TVD: 7,358.69'
Inclination: 92°
Azimuth: 269.4°
VS: 1,043.57'

MD: 8,484'
TVD: 7,354.54'
Inclination: 93°
Azimuth: 269.8°
VS: 1,134.95'





MD: 8,579'
TVD: 7,350.23'
Inclination: 92.2°
Azimuth: 269.9°
VS: 1,226.2'

MD: 8,675'
TVD: 7,347.22'
Inclination: 91.4°
Azimuth: 269.1°
VS: 1,318.62'

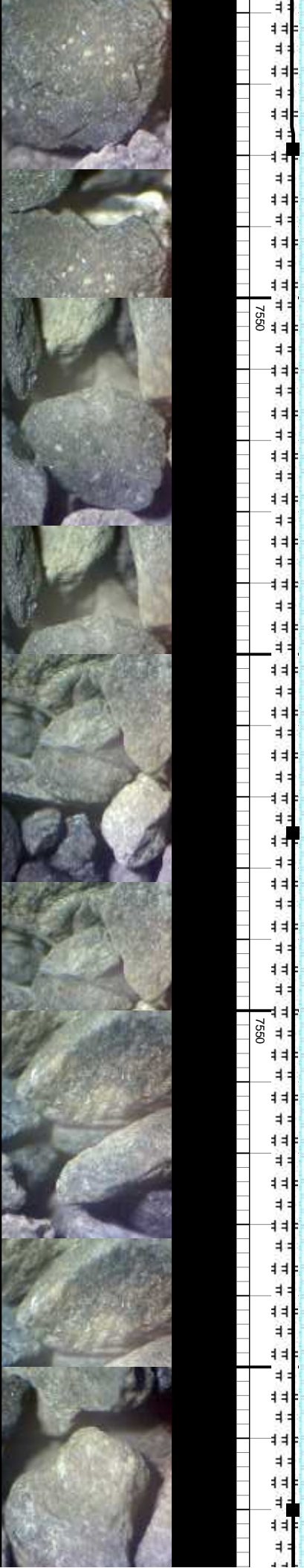
MD: 8,770'
TVD: 7,344.73'
Inclination: 91.6°
Azimuth: 269.1°
VS: 1,410.27'

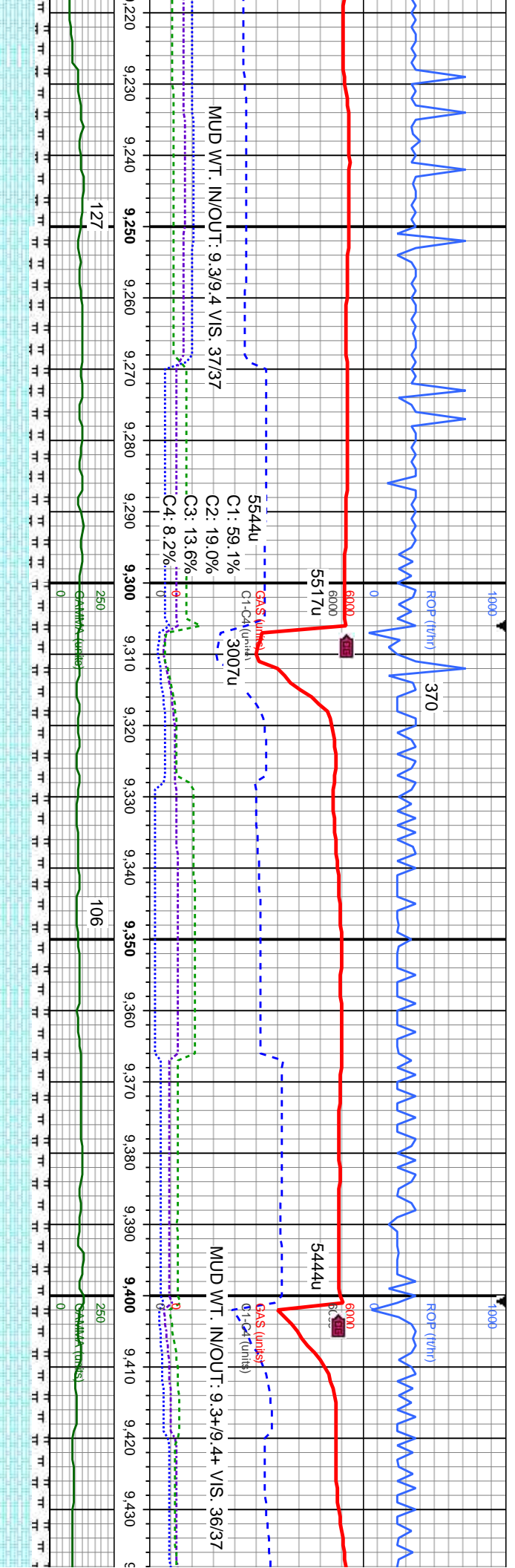
med gy, .mot-str, mod stf, sb blk-y-sb pily, .sb-wxy tex, v calc; rr MRLST: med-dk gy, rti, pily-sb pily, rthy-gt tex, sl sily mtx, v bent, tr cal; g bl-wh fast string cut, g yel ring cut

CHK: lt-med gy, .mot-str, mod stf, sb blk-y-sb pily, sm-rthy - sb-wxy tex, v calc; rr MRLST: med-dk gy, sl frm, brt, pily-sb pily, rthy-gt tex, sl sily mtx, v calc, tr bent, tr cal; g bl-wh fast string cut, g yel mod thk ring cut

CHK: lt-med gy, .mot-str, mod stf, sb blk-y-sb pily, sm-rthy - sb-wxy tex, v calc; rr MRLST: med-dk gy, sl frm, brt, pily-sb pily, rthy-gt tex, sl sily mtx, v calc, tr bent, tr cal; g bl-wh fast string cut, g yel mod thk ring cut

CHK: lt-med gy, .occ crm, mod sm-rthy - sb-wxy tex, v calc; rr MRLST: med-dk gy, sl frm, brt, pily-sb pily, rthy-gt tex, sl sily mtx, v calc, tr bent, tr cal; g bl-wh fast string cut, g yel mod thk ring cut





occ crm, mod sft, sb blk-y-sb ply, occ gt tex, v calc, tr MRLST: brt, ply-sb ply, rthy-gt tex, sl bent, tr cal; g bl-wh fast stmg ring cut

CHK: lt-med gy, occ crm, mod sft, sb blk-y-sb ply, sm-rthy - sb-wxy, tr gt tex, v calc, occ MRLST: med-dk gy, occ blk, sl frm, brt, ply-sb ply, rthy-gt tex, sl sily mtx, v calc, tr bent, tr cal; g bl-wh fast stmg cut, g yel mod thk ring cut

5CHK: lt-med gy, occ crm, mod sft, sb blk-y-sb ply, sm-rthy - sb-wxy, tr gt tex, v calc, occ MRLST: med-dk gy, occ blk, sl frm, brt, ply-sb ply, rthy-gt tex, sl sily mtx, v calc, tr bent, tr cal; g bl-wh fast stmg cut, g yel mod thk ring cut

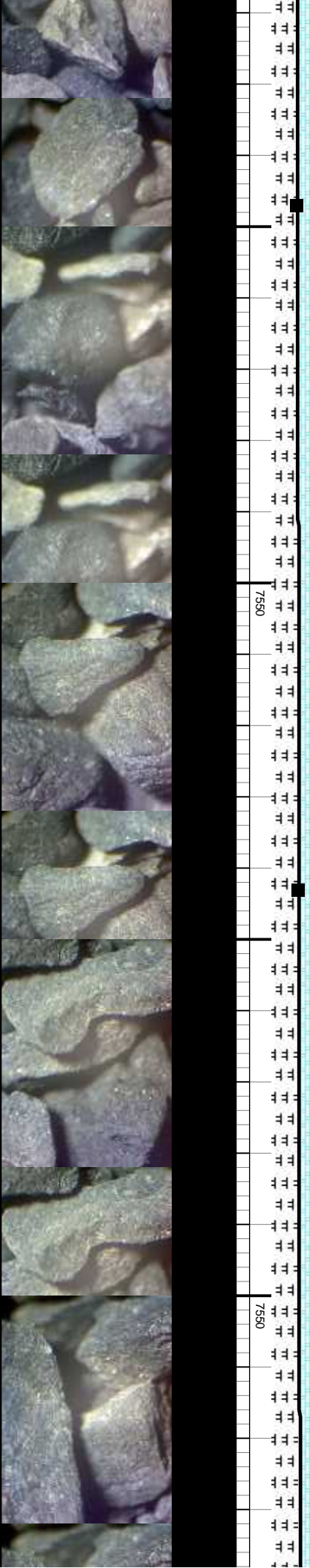
CHK: lt-med gy, occ crm, mod sft, sb blk-y-sb ply, sm-rthy - sb-wxy, tr gt tex, v calc, occ MRLST: med-dk gy, occ blk, sl frm, brt, ply-sb ply, rthy-gt tex, sl sily mtx, v calc, tr bent, tr cal; g bl-wh fast stmg cut, g yel mod thk ring cut

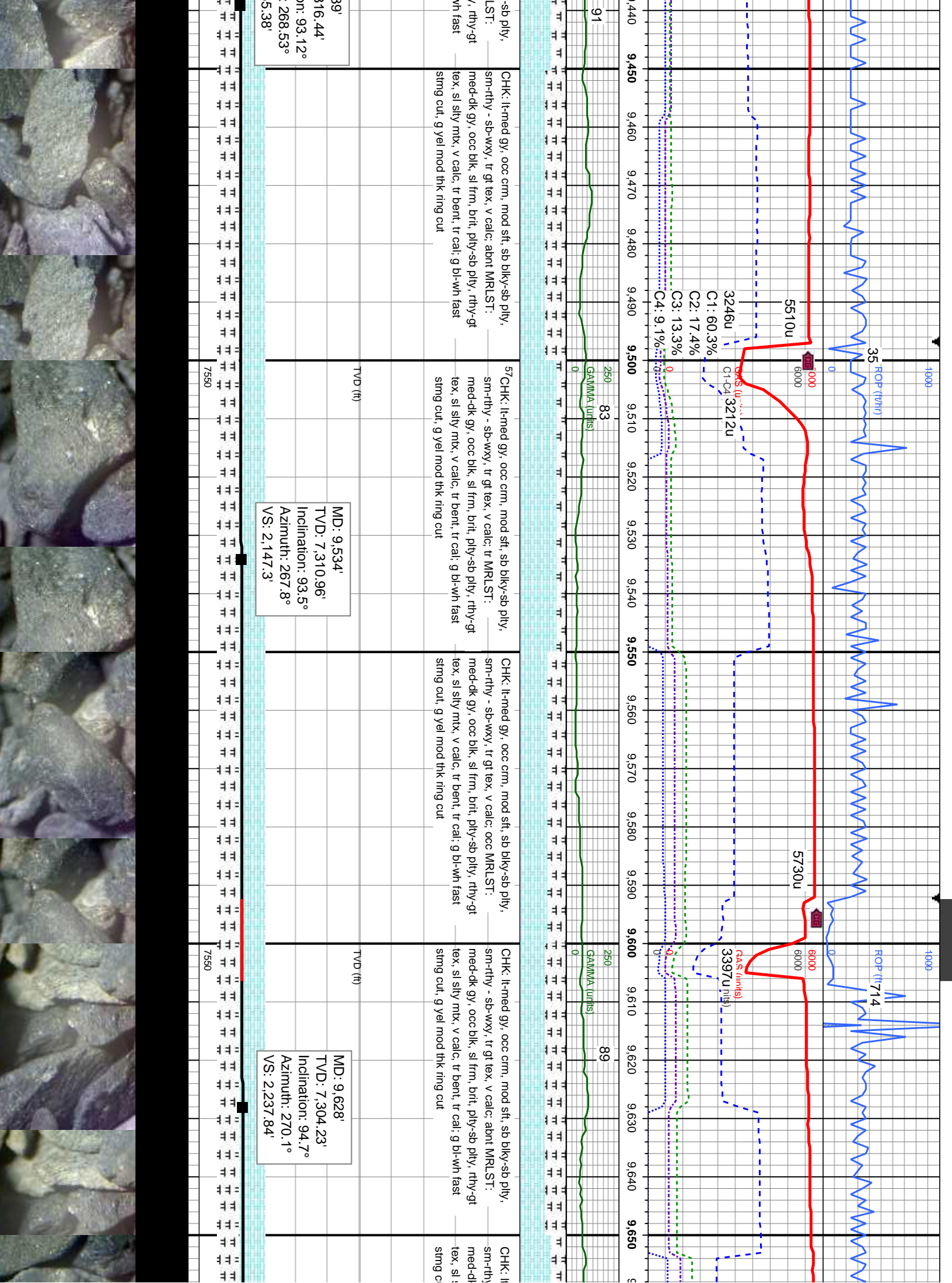
5CHK: lt-med gy, occ crm, mod sft, sb blk-y-sb ply, sm-rthy - sb-wxy, tr gt tex, v calc, occ MRLST: med-dk gy, occ blk, sl frm, brt, ply-sb ply, rthy-gt tex, sl sily mtx, v calc, tr bent, tr cal; g bl-wh fast stmg cut, g yel mod thk ring cut

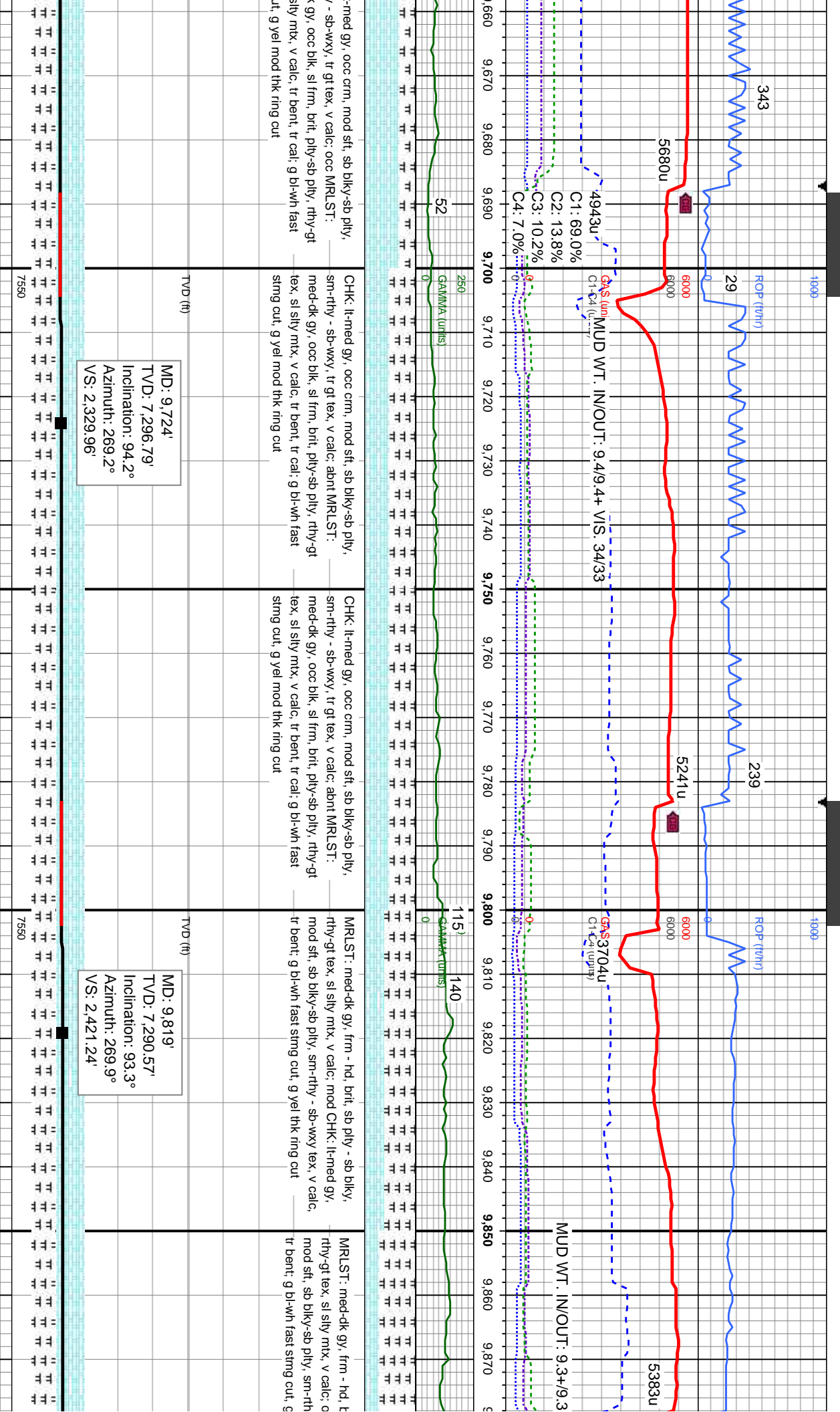
MD: 9,247'
TVD: 7,326.51'
Inclination: 93.1°
Azimuth: 269.1°
VS: 1,870.22'

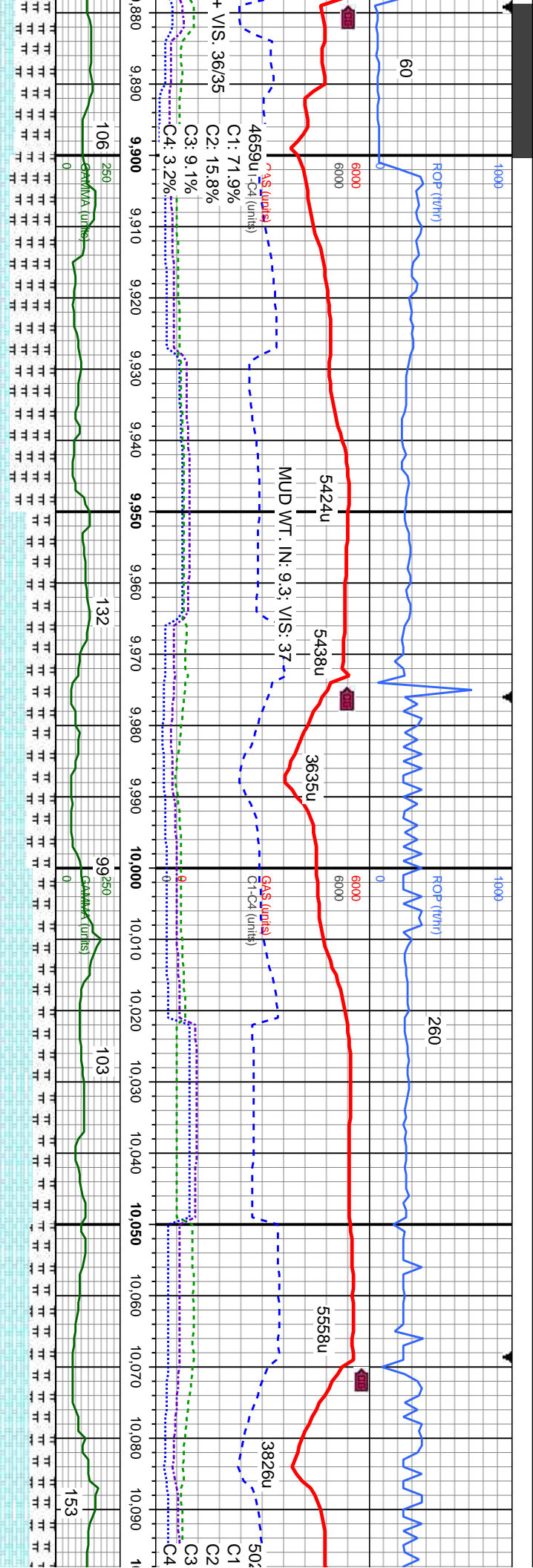
MD: 9,343'
TVD: 7,321.48'
Inclination: 92.9°
Azimuth: 269.1°
VS: 1,962.74'

MD: 9,443'
TVD: 7,316.48'
Inclination: 92.9°
Azimuth: 269.1°
VS: 2,052.74'









cc CHK: lt-med gy, y - sb-wxy tex, v calc, yel thk ring cut

MRSLST: med-dk gy, occ blk, frm - hd, brit, sb pily - sb blkly, rthy-gt tex, sl silty mtx, v calc; tr CHK: lt-med gy, mod sft, sb blkly-sb pily, sm-rthy - sb-wxy tex, v calc, tr bent; g bl-wh fast string cut, g yel thk ring cut

MRSLST: med-dk gy, occ blk, frm - hd, brit, sb pily - sb blkly, rthy-gt tex, sl silty mtx, v calc; tr CHK: lt-med gy, mod sft, sb blkly-sb pily, sm-rthy - sb-wxy tex, v calc, tr bent; g bl-wh fast string cut, g yel thk ring cut

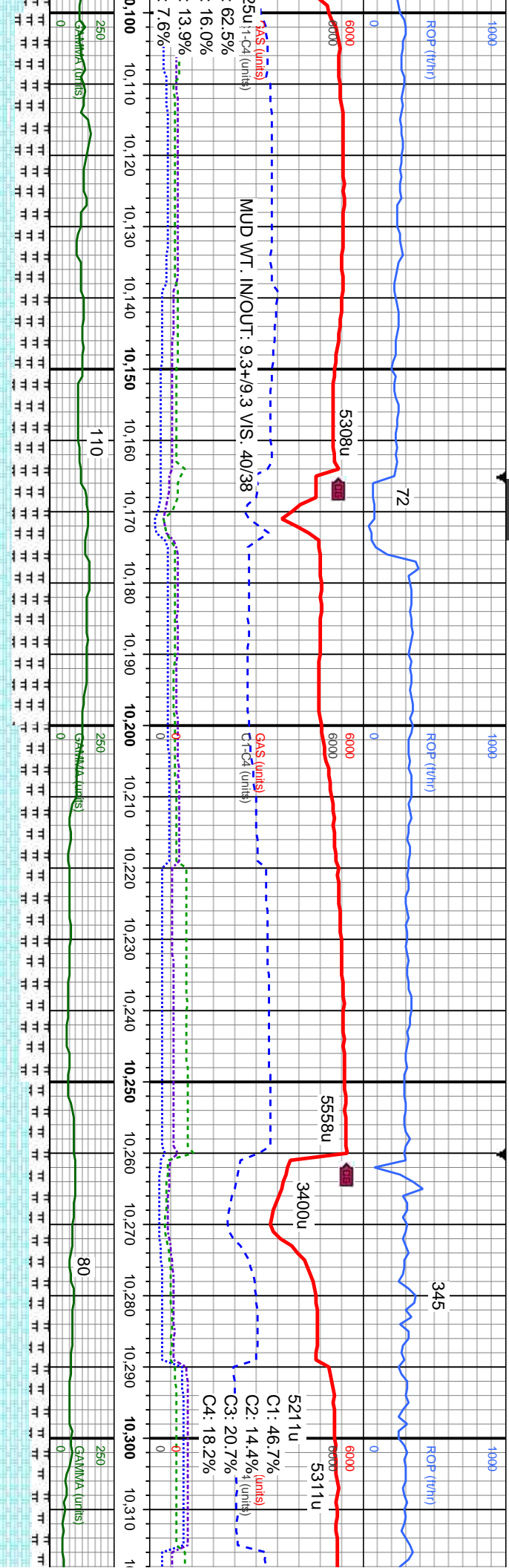
CHK: lt-med gy, occ crm, mod sft, sb blkly-sb pily, sm-rthy - sb-wxy, tr gt tex, v calc; abnt MRSLST: med-dk gy, occ blk, sl frm, brit, pily-sb pily, rthy-gt tex, sl silty mtx, v calc, tr bent, tr cal; g bl-wh fast string cut, g yel mod thk ring cut

CHK: lt-med gy, occ crm, mod sft, sb blkly-sb pily, sm-rthy - sb-wxy, tr gt tex, v calc; occ MRSLST: med-dk gy, occ blk, sl frm, brit, pily-sb pily, rthy-gt tex, sl silty mtx, v calc, tr bent, tr cal; g bl-wh fast string cut, g yel mod thk ring cut

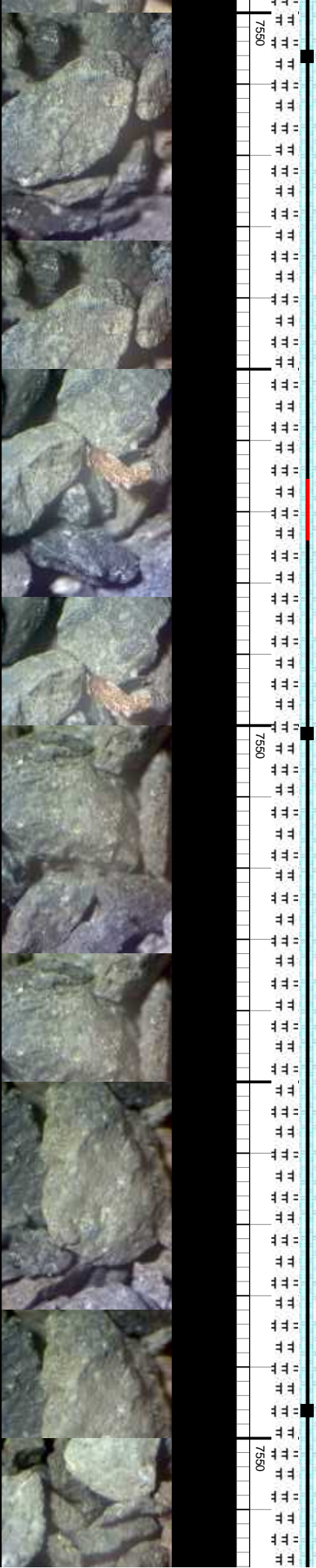
TVD (ft)
MD: 9,915'
TVD: 7,286.39'
Inclination: 91.7°
Azimuth: 271.5°
VS: 2,513.06'

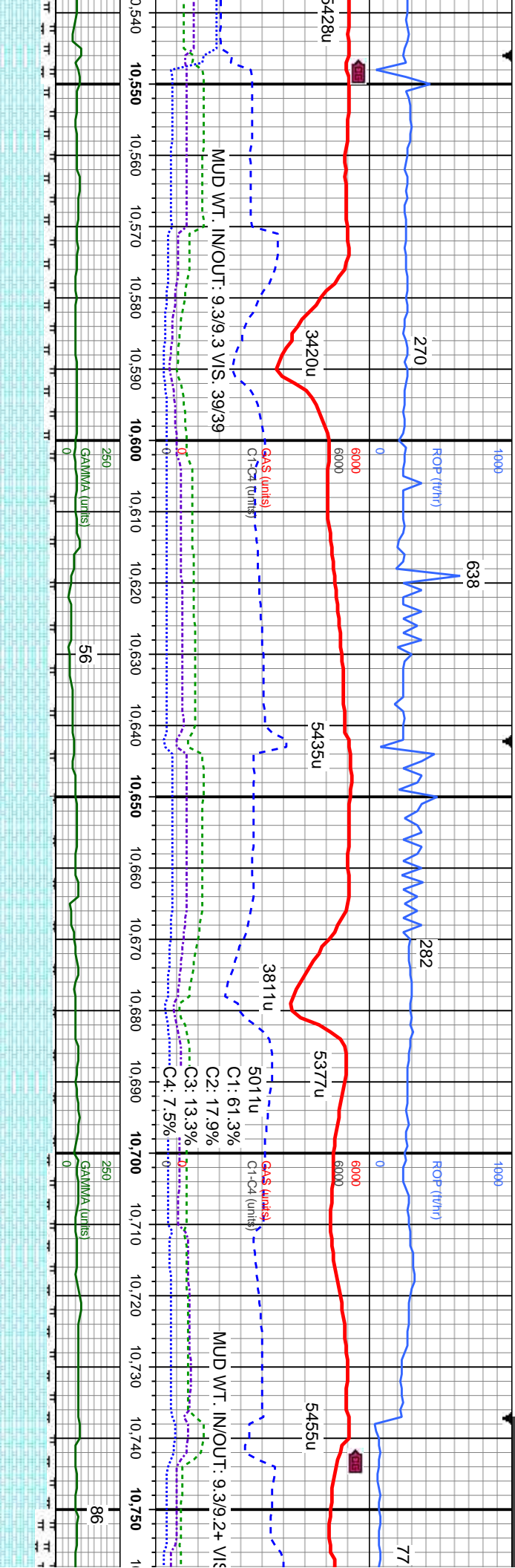
TVD (ft)
MD: 10,010'
TVD: 7,283.9'
Inclination: 91.3°
Azimuth: 271.5°
VS: 2,603.58'



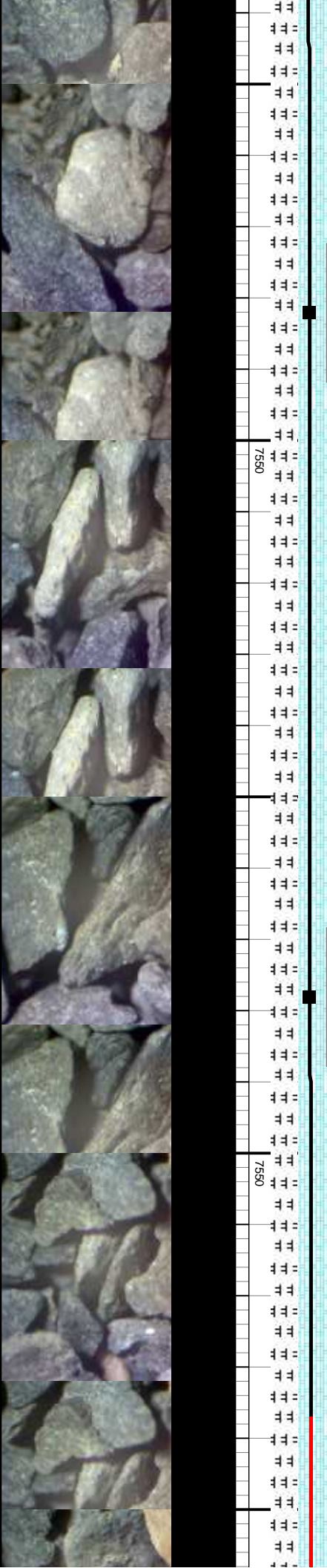


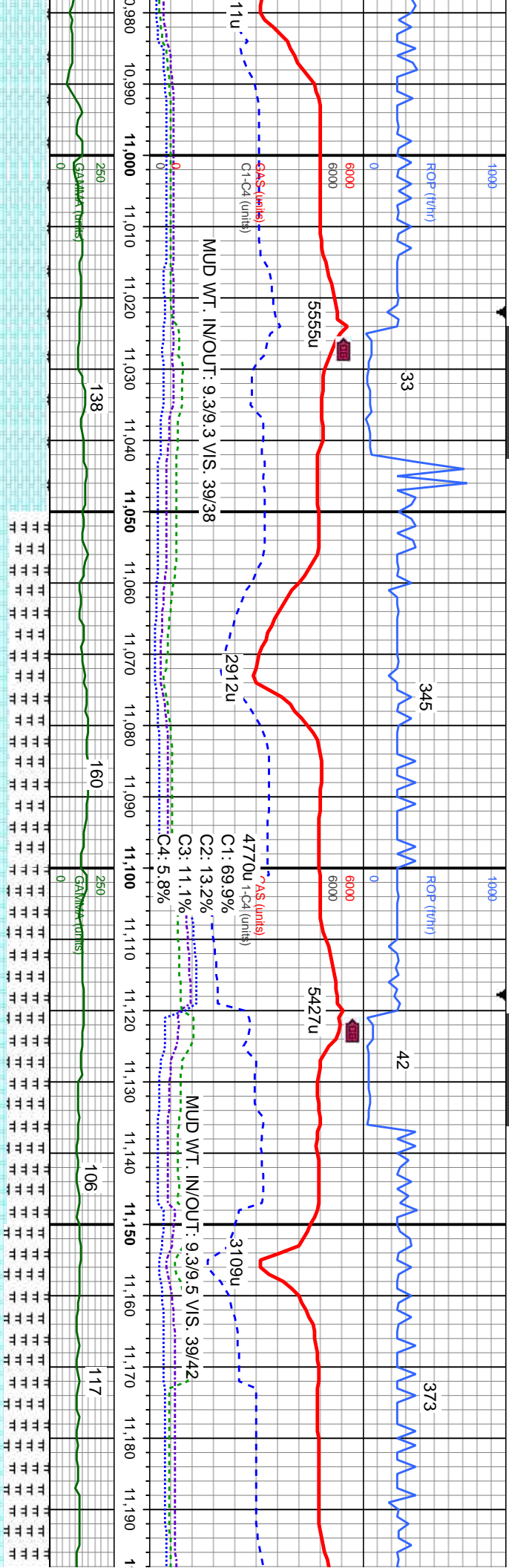
5MRLST: med-dk gy, occ blk, frm - hd, brit, sb ply - sb blk, rthy-gt tex, sl silty mix, v calc; tr CHK: lt-med gy, mod sft, sb blk-y-sb ply, sm-rthy - sb-wxy tex, v calc, tr bent; g bl-wh fast string cut, g yel thk ring cut	MRLST: med-dk gy, occ blk, frm - hd, brit, sb ply - sb blk, rthy-gt tex, sl silty mix, v calc; tr CHK: lt-med gy, mod sft, sb blk-y-sb ply, sm-rthy - sb-wxy tex, v calc, tr bent; g bl-wh fast string cut, g yel thk ring cut	57CHK: lt-med gy, occ crm, mod sft, sb blk-y-sb ply, sm-rthy - sb-wxy, tr gt tex, v calc; abnt MRLST: med-dk gy, occ blk, sl frm, brit, ply-sb ply, rthy-gt tex, sl silty mix, v calc, tr bent, tr cal; g bl-wh fast string cut, g yel mod thk ring cut	CHK: lt-med gy, occ crm, mod sft, sb blk-y-sb ply, sm-rthy - sb-wxy, tr gt tex, v calc; occ MRLST: med-dk gy, occ blk, sl frm, brit, ply-sb ply, rthy-gt tex, sl silty mix, v calc, tr bent, tr cal; g bl-wh fast string cut, g yel mod thk ring cut	CHK: lt-med gy, occ sm-rthy - sb-wxy, tr gt tex, v calc; occ MRLST: med-dk gy, occ blk, sl frm, brit, ply-sb ply, rthy-gt tex, v calc, tr bent, tr cal; g yel mod thk ring cut
MD: 10,106' TVD: 7,282.22' Inclination: 90.7° Azimuth: 271.2° VS: 2,695.16'	MD: 10,201' TVD: 7,280.65' Inclination: 91.2° Azimuth: 270.5° VS: 2,786.02'	MD: 10,296' TVD: 7,279.16' Inclination: 90.6° Azimuth: 270.5° VS: 2,877.06'		





sb ply, med-dk rthy, sl string cut,	CHK: lt-med gy, occ crm, mod sft, sb blk-y-sb ply, sm-rthy - sb-wxy, tr gt tex, v calc; tr MRLST: med-dk gy, occ blk, sl frm, brlt, ply-sb ply, rthy-gt tex, sl sily mnx, v calc, tr bent, tr cal; g bl-wh fast string cut, g yel mod thk ring cut	MD: 10,582' TVD: 7,270.59' Inclination: 92.2° Azimuth: 269.2° VS: 3,152.81'	TVD (ft)
sb ply, med-dk rthy, sl string cut,	CHK: lt-med gy, occ crm, mod sft, sb blk-y-sb ply, sm-rthy - sb-wxy, tr gt tex, v calc; tr MRLST: med-dk gy, occ blk, sl frm, brlt, ply-sb ply, rthy-gt tex, sl sily mnx, v calc, tr bent, tr cal, rr inoc foss; g bl-wh fast string cut, g yel mod thk ring cut	MD: 10,678' TVD: 7,265.73' Inclination: 93.6° Azimuth: 269.6° VS: 3,245.2'	TVD (ft)
sb ply, med-dk rthy, sl string cut,	CHK: lt-med gy, occ crm, mod sft-firm, sb blk-y-sb ply, sm-rthy - sb-wxy, tr gt tex, v calc; tr MRLST: med-dk gy, occ blk, sl frm, brlt, ply-sb ply, rthy-gt tex, sl sily mnx, v calc, tr bent, tr cal; g bl-wh fast string cut, g yel mod thk ring cut	MD: 10,678' TVD: 7,265.73' Inclination: 93.6° Azimuth: 269.6° VS: 3,245.2'	TVD (ft)
sb ply, med-dk rthy, sl string cut,	CHK: lt-med gy, occ crm, mod sft-firm, sb blk-y-sb ply, sm-rthy - sb-wxy, tr gt tex, v calc; tr MRLST: med-dk gy, occ blk, sl frm, brlt, ply-sb ply, rthy-gt tex, sl sily mnx, v calc, tr bent, tr cal; g bl-wh fast string cut, g yel mod thk ring cut	MD: 10,678' TVD: 7,265.73' Inclination: 93.6° Azimuth: 269.6° VS: 3,245.2'	TVD (ft)





5ft-frm, sb blk-y-sb
x, v calc; rr MRLST:
t, ply-sb ply, rthy-gt
t cal; g bl-wh fast

5CHK: lt-med gy, occ crm, mod st-frm, sb blk-y-sb
ply, sm-rthy - sb-wxy, tr gt tex, v calc; rr MRLST:
med-dk gy, occ blk, sl frm, brt, ply-sb ply, rthy-gt
tex, sl sily mtx, v calc, tr bent, tr cal; g bl-wh fast
sting cut, g yel mod thk ring cut

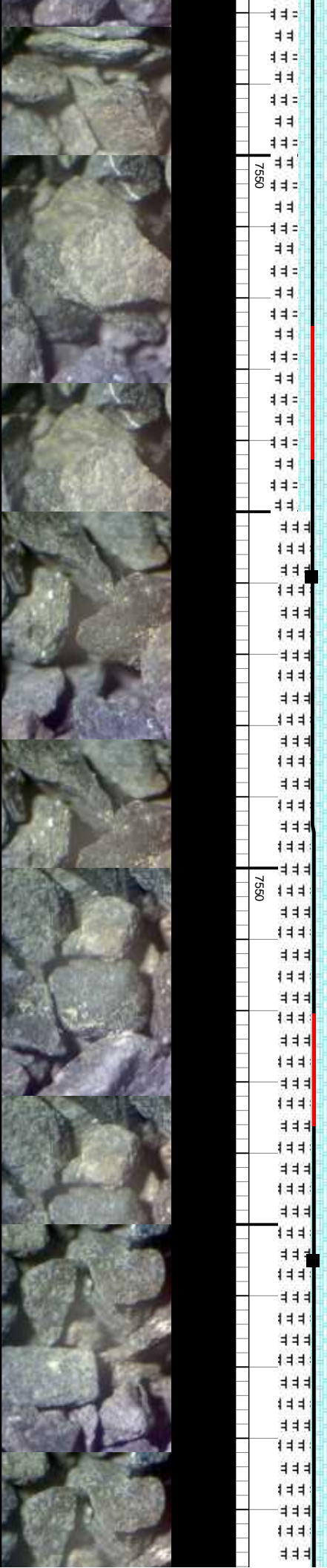
MRLST: med-dk gy, occ blk, frm - hd, brt,
sb ply - sb blk-y, rthy-gt tex, sl sily mtx, v
calc; mod CHK: lt-med gy, mod sft, sb
blk-y-sb ply, sm-rthy - sb-wxy tex, v calc, tr
bent; g bl-wh fast sting cut, g yel thk ring
cut

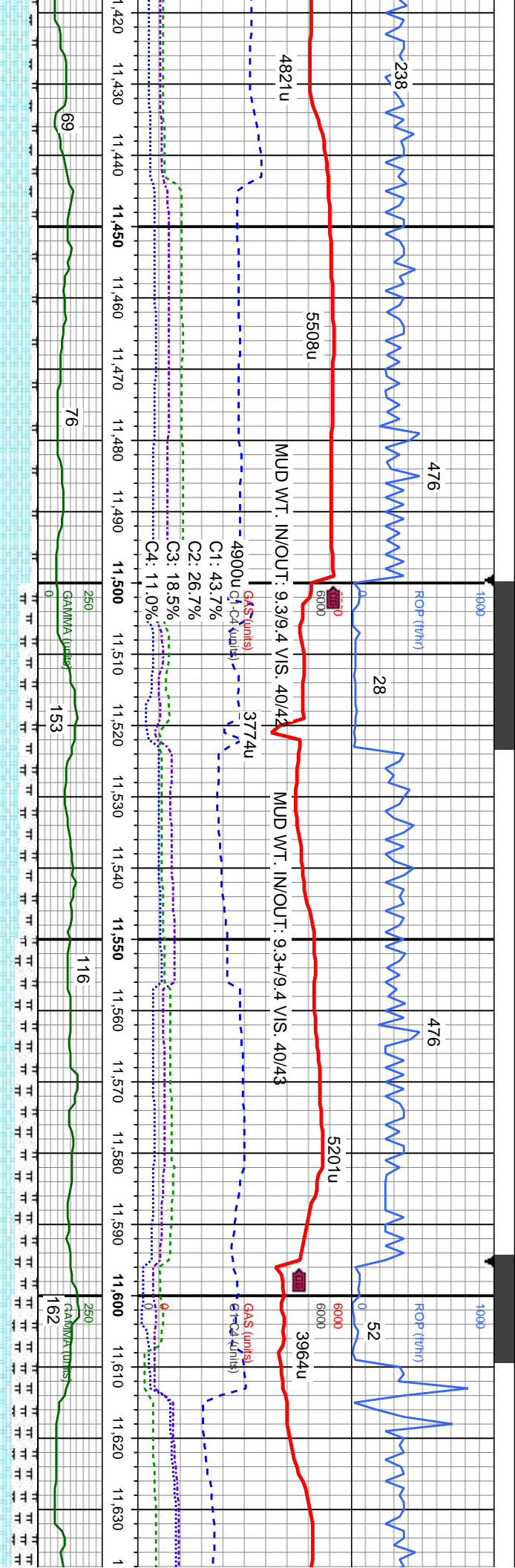
5750MRLST: med-dk gy, occ blk, frm - hd, brt,
sb ply - sb blk-y, rthy-gt tex, sl sily mtx, v
calc; mod CHK: lt-med gy, mod sft, sb
blk-y-sb ply, sm-rthy - sb-wxy tex, v calc, tr
bent; g bl-wh fast sting cut, g yel thk ring
cut

MRLST: med-dk gy, occ blk, frm - hd, brt,
sb ply - sb blk-y, rthy-gt tex, sl sily mtx, v
calc; tr CHK: lt-med gy, mod sft, sb blk-y-sb
ply, sm-rthy - sb-wxy tex, v calc, tr bent; g
bl-wh fast sting cut, g yel thk ring cut

MD: 11,059'
TVD: 7,253.02'
Inclination: 91.7°
Azimuth: 270.3°
VS: 3,612.91'

MD: 11,155'
TVD: 7,250.75'
Inclination: 91°
Azimuth: 269.2°
VS: 3,705.24'





occ crm, mod sft-frm, sb blk-ly-sb
ply, tr gt tex, v calc, tr MRLST:
s, sl frm, brt, ply-sb ply, rthy-gt
alc, tr bent, tr cal; g bl-wh fast
d thk ring cut

CHK: lt-med gy, occ crm, mod sft-frm, sb blk-ly-sb
ply, sm-rthy - sb-wxy, tr gt tex, v calc, tr MRLST:
med-dk gy, occ blk, sl frm, brt, ply-sb ply, rthy-gt
tex, sl sily mtx, v calc, tr bent, tr cal; g bl-wh fast
string cut, g yel mod thk ring cut

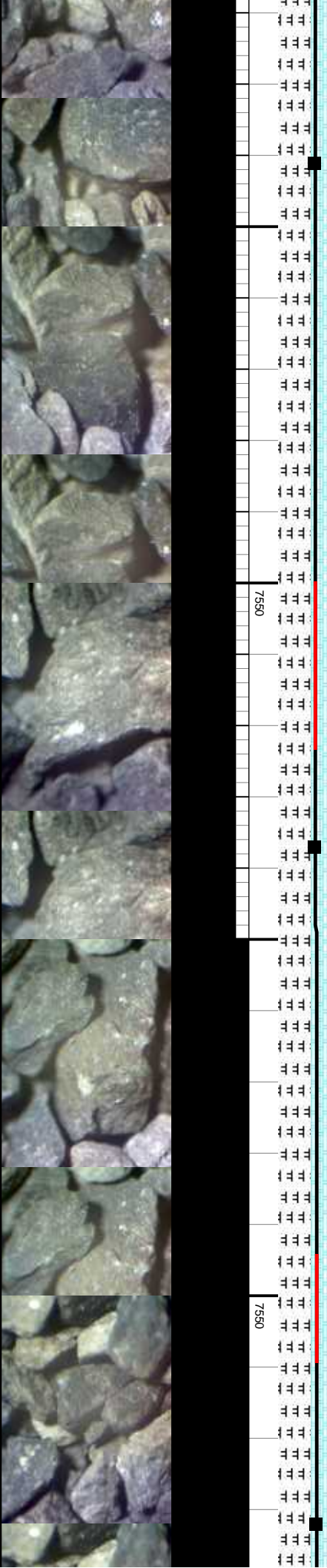
CHK: lt-med gy, occ crm, mod sft-frm, sb blk-ly-sb
ply, sm-rthy - sb-wxy, tr gt tex, v calc, mod
MRLST: med-dk gy, occ blk, sl frm, brt, ply-sb
ply, rthy-gt tex, sl sily mtx, v calc, tr bent, tr cal;
g bl-wh fast string cut, g yel mod thk ring cut

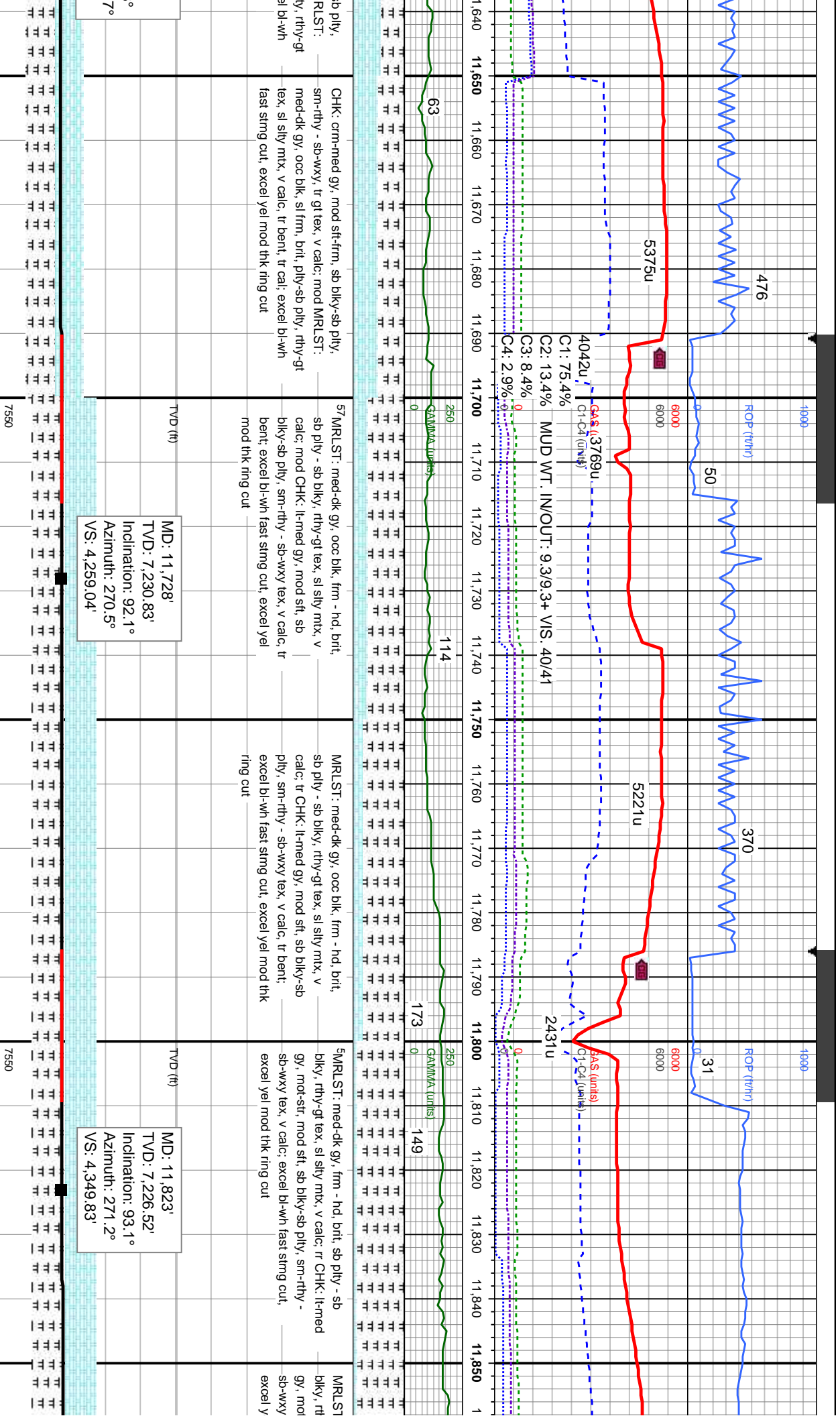
CHK: lt-med gy, occ crm, mod sft-frm, sb blk-ly-sb
ply, sm-rthy - sb-wxy, tr gt tex, v calc, mod
MRLST: med-dk gy, occ blk, sl frm, brt, ply-sb
ply, rthy-gt tex, sl sily mtx, v calc, tr bent, tr cal;
excel bl-wh fast string cut, excel yel mod thk ring
cut

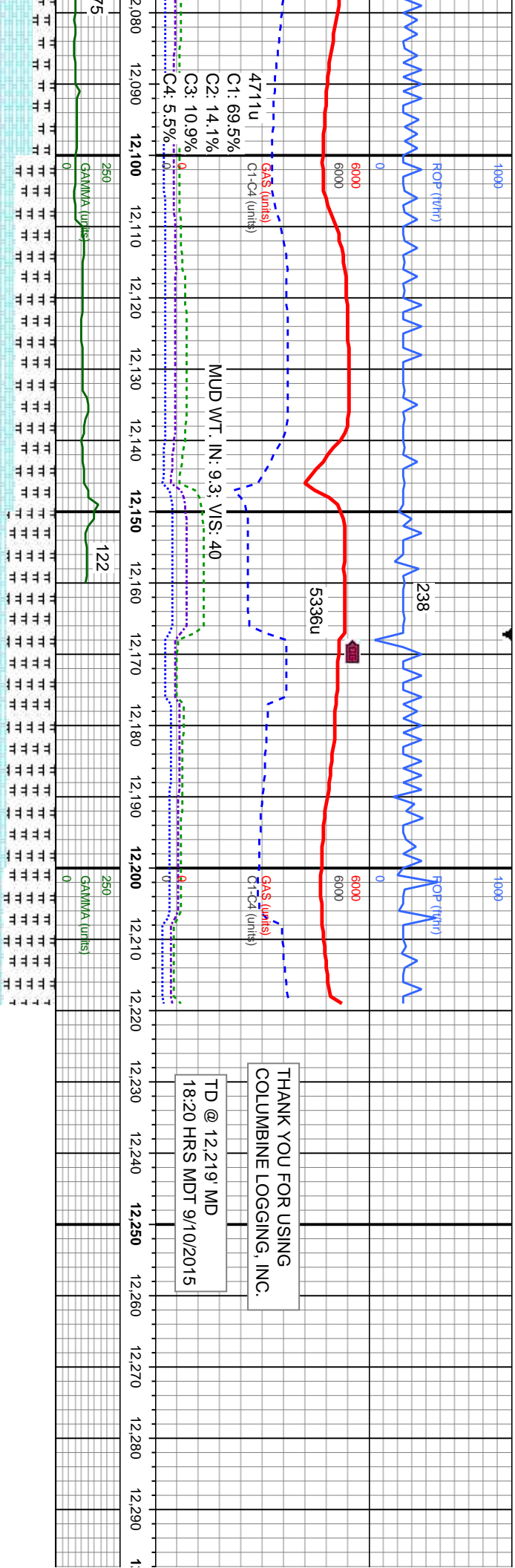
MD: 11,441'
TVD: 7,243.68'
Inclination: 92.3°
Azimuth: 267.6°
VS: 3,981.92'

MD: 11,537'
TVD: 7,239.66'
Inclination: 92.5°
Azimuth: 268.5°
VS: 4,074.93'

MD: 11,632'
TVD: 7,235.1'
Inclination: 93°
Azimuth: 268°
VS: 4,166.72'







MR.LST: med-dk gy, ooc blk, frm - hd, brit, sb ply - sb blk, rthy-gt tex, sl sily mx, v calc; tr CHK: lt-med gy, mot-sft, mod sft, sb blk-sb ply, sm-rthy - sb-wxy tex, v calc; excel bl-wh fast sting cut, excel yel mod thk ring cut

MR.LST: med-dk gy, frm - hd, brit, sb ply - sb blk, rthy-gt tex, sl sily mx, v calc; tr CHK: lt-med gy, mot-sft, mod sft, sb blk-sb ply, sm-rthy - sb-wxy tex, v calc; excel bl-wh fast sting cut, excel yel mod thk ring cut

MD: 12,109'
TVD: 7,222.71'
Inclination: 90.5°
Azimuth: 270.1°
VS: 4,624.26'

MD: 12,161'
TVD: 7,222.17'
Inclination: 90.7°
Azimuth: 269.8°
VS: 4,674.24'

PROJECTION
TO BIT

MD: 12,219'
TVD: 7,221.46'
Inclination: 90.7°
Azimuth: 269.8°
VS: 4,730.02'

