

Bayswater Exploration & Production, LLC

Well Name: **Walton H-25HC**

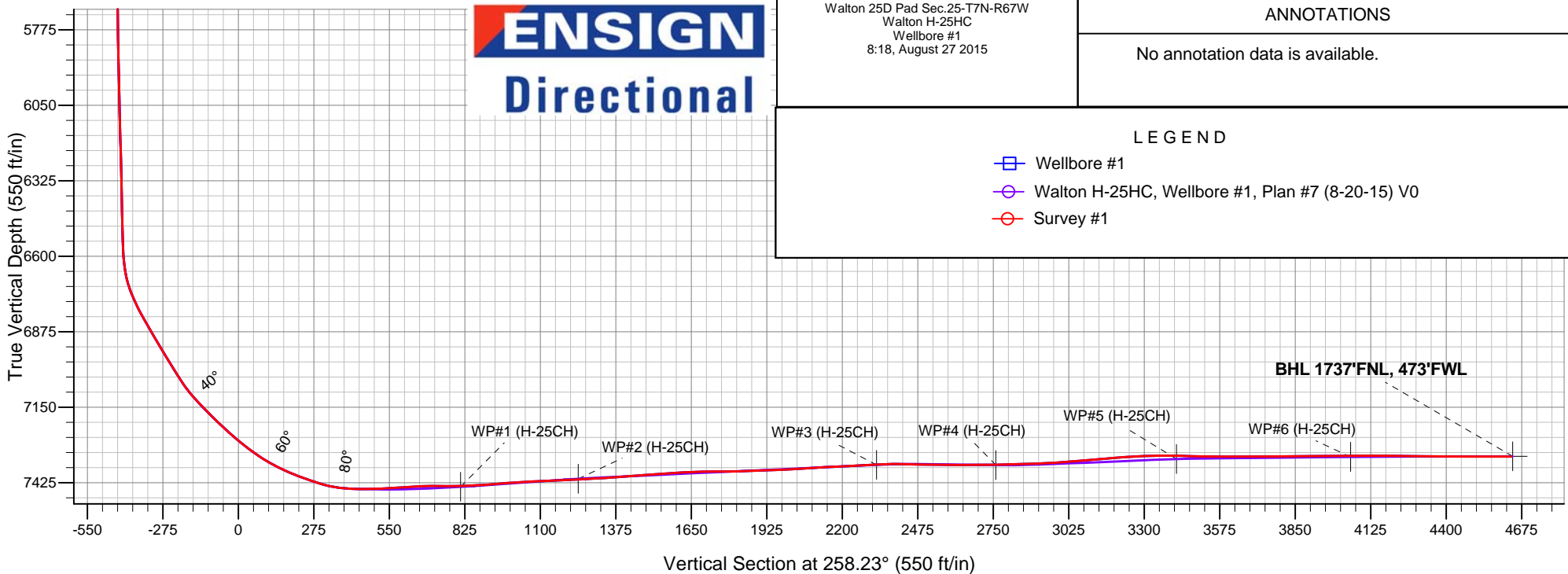
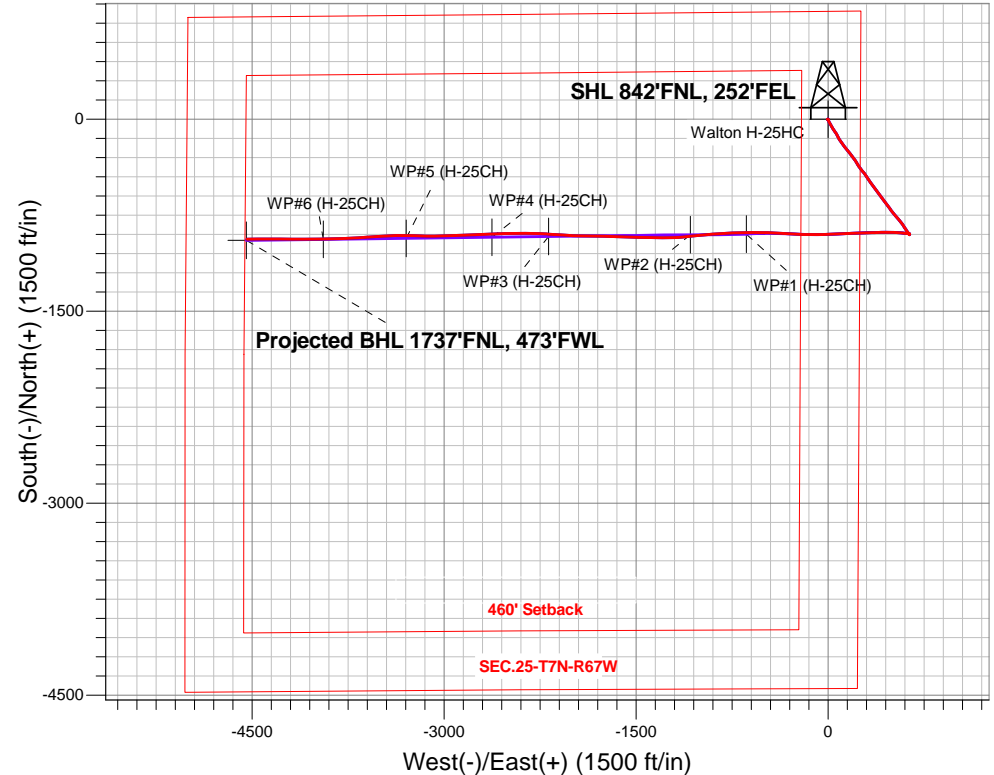
Surface Location: Walton 25D Pad Sec.25-T7N-R67W
North American Datum 1983 , US State Plane 1983 , Colorado Northern Zone

Ground Elevation: 4979.0

+N/-S	+E/-W	Northing	Easting	Latitude	Longitude	Slot
0.0	0.0	1443970.98	3185386.74	40.550186	-104.832879	
RKB - 22.5' WELL @ 5001.5ft (RKB - 22.5')						

FINAL SURVEY

Projected Bottom Hole Location
12350'MD 7330'TVD 938'S & 4541'W of SHL
90.04 degree Incl @ 269.08 degree AZM





Bayswater Exploration & Production, LLC

SEC.25-T7N-R67W

Walton 25D Pad Sec.25-T7N-R67W

Walton H-25HC

Wellbore #1

Survey: Survey #1

Standard Survey Report

27 August, 2015



BAYSWATER
EXPLORATION & PRODUCTION, LLC

Company:	Bayswater Exploration & Production, LLC	Local Co-ordinate Reference:	Well Walton H-25HC
Project:	SEC.25-T7N-R67W	TVD Reference:	WELL @ 5001.5ft (RKB - 22.5')
Site:	Walton 25D Pad Sec.25-T7N-R67W	MD Reference:	WELL @ 5001.5ft (RKB - 22.5')
Well:	Walton H-25HC	North Reference:	True
Wellbore:	Wellbore #1	Survey Calculation Method:	Minimum Curvature
Design:	Wellbore #1	Database:	EDMNEW

Project	SEC.25-T7N-R67W, Weld County, Colorado		
Map System:	US State Plane 1983	System Datum:	Mean Sea Level
Geo Datum:	North American Datum 1983		Using Well Reference Point
Map Zone:	Colorado Northern Zone		Using geodetic scale factor

Site	Walton 25D Pad Sec.25-T7N-R67W		
Site Position:		Northing:	1,444,075.92 ft
From:	Lat/Long	Easting:	3,185,386.51 ft
Position Uncertainty:	0.0 ft	Slot Radius:	"
		Latitude:	40.550474
		Longitude:	-104.832877
		Grid Convergence:	0.43 °

Well	Walton H-25HC		
Well Position	+N/-S	0.0 ft	Northing:
	+E/-W	0.0 ft	Easting:
Position Uncertainty	0.0 ft	Wellhead Elevation:	ft
		Latitude:	40.550186
		Longitude:	-104.832879
		Ground Level:	4,979.0 ft

Wellbore	Wellbore #1		
Magnetics	Model Name	Sample Date	Declination (°)
	IGRF2010	7/31/2015	8.36
			Dip Angle (°)
			67.02
			Field Strength (nT)
			52,767

Design	Wellbore #1		
Audit Notes:			
Version:	1.0	Phase:	ACTUAL
		Tie On Depth:	0.0
Vertical Section:	Depth From (TVD) (ft)	+N/-S (ft)	+E/-W (ft)
	0.0	0.0	0.0
			Direction (°)
			258.23

Survey Program	Date	8/27/2015		
From (ft)	To (ft)	Survey (Wellbore)	Tool Name	Description
222.0	12,350.0	Survey #1 (Wellbore #1)	MWD	MWD - Standard

Survey										
Measured Depth (ft)	Inclination (°)	Azimuth (°)	Vertical Depth (ft)	+N/-S (ft)	+E/-W (ft)	Vertical Section (ft)	Dogleg Rate (°/100ft)	Build Rate (°/100ft)	Turn Rate (°/100ft)	
0.0	0.00	0.00	0.0	0.0	0.0	0.0	0.00	0.00	0.00	
1.0	0.00	168.00	1.0	0.0	0.0	0.0	0.36	0.36	0.00	
SHL 842'FNL, 252'FEL										
222.0	0.80	168.00	222.0	-1.5	0.3	0.0	0.36	0.36	0.00	
314.0	1.10	170.60	314.0	-3.0	0.6	0.0	0.33	0.33	2.83	
406.0	0.20	233.20	406.0	-4.0	0.6	0.2	1.11	-0.98	68.04	
498.0	0.40	313.40	498.0	-3.9	0.3	0.5	0.45	0.22	87.17	
590.0	0.50	317.70	590.0	-3.3	-0.2	0.9	0.11	0.11	4.67	
682.0	0.80	309.70	682.0	-2.6	-1.0	1.5	0.34	0.33	-8.70	
737.0	0.90	313.90	737.0	-2.1	-1.6	2.0	0.21	0.18	7.64	
818.0	0.30	308.60	818.0	-1.5	-2.2	2.5	0.74	-0.74	-6.54	
912.0	0.40	300.30	912.0	-1.2	-2.7	2.9	0.12	0.11	-8.83	
1,007.0	0.40	331.40	1,006.9	-0.7	-3.2	3.2	0.23	0.00	32.74	

Company:	Bayswater Exploration & Production, LLC	Local Co-ordinate Reference:	Well Walton H-25HC
Project:	SEC.25-T7N-R67W	TVD Reference:	WELL @ 5001.5ft (RKB - 22.5')
Site:	Walton 25D Pad Sec.25-T7N-R67W	MD Reference:	WELL @ 5001.5ft (RKB - 22.5')
Well:	Walton H-25HC	North Reference:	True
Wellbore:	Wellbore #1	Survey Calculation Method:	Minimum Curvature
Design:	Wellbore #1	Database:	EDMNEW

Survey

Measured Depth (ft)	Inclination (°)	Azimuth (°)	Vertical Depth (ft)	+N/-S (ft)	+E/-W (ft)	Vertical Section (ft)	Dogleg Rate (°/100ft)	Build Rate (°/100ft)	Turn Rate (°/100ft)
1,102.0	0.90	134.70	1,101.9	-1.0	-2.8	2.9	1.36	0.53	171.90
1,194.0	2.60	157.60	1,193.9	-3.4	-1.5	2.1	1.96	1.85	24.89
1,285.0	4.20	161.60	1,284.7	-8.5	0.4	1.4	1.78	1.76	4.40
1,377.0	6.10	147.40	1,376.4	-15.8	4.1	-0.7	2.47	2.07	-15.43
1,469.0	7.70	150.40	1,467.7	-25.3	9.7	-4.4	1.78	1.74	3.26
1,561.0	9.10	153.00	1,558.7	-37.1	16.1	-8.2	1.58	1.52	2.83
1,653.0	10.90	149.50	1,649.3	-51.1	23.8	-12.9	2.06	1.96	-3.80
1,745.0	11.80	151.60	1,739.5	-66.9	32.7	-18.4	1.08	0.98	2.28
1,836.0	12.20	146.70	1,828.5	-83.1	42.4	-24.6	1.20	0.44	-5.38
1,928.0	13.10	144.10	1,918.3	-99.7	53.8	-32.4	1.16	0.98	-2.83
2,020.0	13.90	148.60	2,007.7	-117.5	65.7	-40.4	1.43	0.87	4.89
2,112.0	14.60	151.80	2,096.9	-137.2	76.9	-47.4	1.15	0.76	3.48
2,204.0	14.90	152.50	2,185.9	-157.9	87.9	-53.8	0.38	0.33	0.76
2,296.0	15.70	147.80	2,274.6	-178.9	100.0	-61.4	1.60	0.87	-5.11
2,387.0	15.60	141.10	2,362.3	-198.9	114.2	-71.3	1.99	-0.11	-7.36
2,480.0	16.40	139.50	2,451.7	-218.6	130.6	-83.3	0.98	0.86	-1.72
2,574.0	16.40	138.10	2,541.8	-238.5	148.1	-96.3	0.42	0.00	-1.49
2,668.0	16.50	141.60	2,632.0	-258.9	165.2	-109.0	1.06	0.11	3.72
2,762.0	17.00	145.30	2,722.0	-280.6	181.4	-120.3	1.25	0.53	3.94
2,856.0	18.20	146.30	2,811.6	-304.2	197.3	-131.2	1.32	1.28	1.06
2,950.0	19.90	148.10	2,900.5	-330.0	213.9	-142.1	1.91	1.81	1.91
3,044.0	18.60	146.20	2,989.2	-356.0	230.7	-153.3	1.53	-1.38	-2.02
3,137.0	17.40	143.00	3,077.6	-379.4	247.3	-164.8	1.67	-1.29	-3.44
3,231.0	17.50	140.70	3,167.3	-401.6	264.8	-177.3	0.74	0.11	-2.45
3,324.0	17.80	142.70	3,255.9	-423.7	282.2	-189.9	0.73	0.32	2.15
3,418.0	16.20	143.20	3,345.8	-445.6	298.8	-201.6	1.71	-1.70	0.53
3,513.0	15.90	147.40	3,437.1	-467.2	313.7	-211.9	1.26	-0.32	4.42
3,605.0	17.20	147.10	3,525.3	-489.3	327.9	-221.3	1.42	1.41	-0.33
3,700.0	15.70	145.10	3,616.4	-511.6	342.9	-231.4	1.69	-1.58	-2.11
3,793.0	16.20	144.80	3,705.8	-532.5	357.6	-241.5	0.54	0.54	-0.32
3,886.0	16.20	142.80	3,795.2	-553.5	372.9	-252.2	0.60	0.00	-2.15
3,981.0	19.30	143.20	3,885.6	-576.6	390.3	-264.5	3.27	3.26	0.42
4,075.0	20.00	143.20	3,974.1	-601.9	409.3	-277.9	0.74	0.74	0.00
4,169.0	20.20	141.60	4,062.4	-627.5	429.0	-292.0	0.62	0.21	-1.70
4,264.0	21.80	144.10	4,151.1	-654.6	449.5	-306.6	1.93	1.68	2.63
4,357.0	22.00	143.70	4,237.4	-682.7	469.9	-320.9	0.27	0.22	-0.43
4,450.0	19.90	142.50	4,324.2	-709.3	489.9	-335.0	2.30	-2.26	-1.29
4,543.0	20.00	142.10	4,411.7	-734.4	509.3	-348.8	0.18	0.11	-0.43
4,637.0	18.60	139.50	4,500.4	-758.4	528.9	-363.1	1.75	-1.49	-2.77
4,731.0	17.50	139.30	4,589.8	-780.6	547.9	-377.2	1.17	-1.17	-0.21
4,825.0	17.10	140.50	4,679.5	-801.9	565.9	-390.4	0.57	-0.43	1.28
4,919.0	15.00	146.30	4,769.8	-822.7	581.4	-401.4	2.81	-2.23	6.17
5,014.0	13.80	146.90	4,861.9	-842.5	594.4	-410.1	1.27	-1.26	0.63
5,107.0	12.60	148.60	4,952.4	-860.4	605.8	-417.6	1.36	-1.29	1.83
5,200.0	11.10	146.30	5,043.4	-876.5	616.0	-424.3	1.69	-1.61	-2.47
5,295.0	8.50	144.60	5,137.0	-889.8	625.2	-430.6	2.75	-2.74	-1.79
5,389.0	5.00	143.20	5,230.4	-898.8	631.6	-435.1	3.73	-3.72	-1.49
5,481.0	1.90	129.60	5,322.2	-903.0	635.2	-437.7	3.46	-3.37	-14.78
5,576.0	1.30	13.30	5,417.2	-902.9	636.7	-439.2	2.88	-0.63	-122.42
5,670.0	1.30	0.40	5,511.1	-900.8	636.9	-439.8	0.31	0.00	-13.72
5,765.0	1.50	348.80	5,606.1	-898.5	636.7	-440.1	0.36	0.21	-12.21
5,859.0	1.30	329.70	5,700.1	-896.4	635.9	-439.8	0.54	-0.21	-20.32
5,954.0	1.60	304.60	5,795.0	-894.7	634.3	-438.5	0.73	0.32	-26.42
6,048.0	1.30	294.40	5,889.0	-893.5	632.2	-436.7	0.42	-0.32	-10.85

Company:	Bayswater Exploration & Production, LLC	Local Co-ordinate Reference:	Well Walton H-25HC
Project:	SEC.25-T7N-R67W	TVD Reference:	WELL @ 5001.5ft (RKB - 22.5')
Site:	Walton 25D Pad Sec.25-T7N-R67W	MD Reference:	WELL @ 5001.5ft (RKB - 22.5')
Well:	Walton H-25HC	North Reference:	True
Wellbore:	Wellbore #1	Survey Calculation Method:	Minimum Curvature
Design:	Wellbore #1	Database:	EDMNEW

Survey

Measured Depth (ft)	Inclination (°)	Azimuth (°)	Vertical Depth (ft)	+N/-S (ft)	+E/-W (ft)	Vertical Section (ft)	Dogleg Rate (°/100ft)	Build Rate (°/100ft)	Turn Rate (°/100ft)
6,141.0	1.40	273.30	5,982.0	-893.0	630.1	-434.8	0.54	0.11	-22.69
6,235.0	1.30	268.50	6,076.0	-893.0	627.9	-432.6	0.16	-0.11	-5.11
6,328.0	1.80	261.30	6,168.9	-893.2	625.4	-430.1	0.58	0.54	-7.74
6,421.0	1.40	266.40	6,261.9	-893.5	622.8	-427.5	0.46	-0.43	5.48
6,517.0	1.20	275.70	6,357.9	-893.5	620.7	-425.4	0.30	-0.21	9.69
6,611.0	1.40	268.30	6,451.8	-893.4	618.5	-423.4	0.28	0.21	-7.87
6,704.0	1.20	268.90	6,544.8	-893.5	616.4	-421.3	0.22	-0.22	0.65
6,798.0	7.30	276.60	6,638.5	-892.8	609.5	-414.6	6.50	6.49	8.19
6,891.0	21.90	275.50	6,728.3	-890.5	586.3	-392.3	15.70	15.70	-1.18
6,986.0	30.00	274.30	6,813.6	-887.0	544.9	-352.5	8.54	8.53	-1.26
7,080.0	31.30	272.40	6,894.5	-884.2	497.0	-306.3	1.72	1.38	-2.02
7,173.0	31.70	269.00	6,973.8	-883.6	448.5	-258.8	1.96	0.43	-3.66
7,266.0	33.20	267.50	7,052.3	-885.2	398.6	-209.7	1.83	1.61	-1.61
7,360.0	43.70	269.90	7,125.8	-886.3	340.2	-152.3	11.28	11.17	2.55
7,454.0	46.00	268.00	7,192.4	-887.6	274.0	-87.2	2.83	2.45	-2.02
7,547.0	49.00	267.30	7,255.3	-890.4	205.5	-19.6	3.27	3.23	-0.75
7,641.0	54.50	266.90	7,313.4	-894.1	131.8	53.3	5.86	5.85	-0.43
7,735.0	62.50	266.90	7,362.5	-898.5	51.8	132.5	8.51	8.51	0.00
7,829.0	69.50	268.90	7,400.7	-901.6	-34.0	217.1	7.70	7.45	2.13
7,922.0	73.70	270.40	7,430.1	-902.1	-122.2	303.6	4.77	4.52	1.61
8,003.0	84.90	271.90	7,445.1	-900.5	-201.6	381.0	13.95	13.83	1.85
8,023.8	86.44	272.22	7,446.6	-899.7	-222.3	401.1	7.58	7.42	1.54
LANDING PT. 1745'FNL, 470'FEL									
8,083.0	90.84	273.13	7,448.1	-897.0	-281.4	458.4	7.58	7.43	1.54
8,179.0	93.12	273.25	7,444.7	-891.6	-377.2	551.1	2.38	2.38	0.13
8,274.0	93.39	271.90	7,439.3	-887.4	-472.0	643.0	1.45	0.28	-1.42
8,370.0	88.99	269.38	7,437.3	-886.3	-567.9	736.7	5.28	-4.58	-2.63
8,441.7	91.44	269.40	7,437.1	-887.1	-639.6	807.0	3.42	3.42	0.03
WP#1 (H-25CH)									
8,465.0	92.24	269.41	7,436.3	-887.3	-662.9	829.9	3.42	3.42	0.03
8,560.0	94.09	267.75	7,431.1	-889.7	-757.7	923.2	2.61	1.95	-1.75
8,656.0	94.35	265.98	7,424.0	-894.9	-853.3	1,017.9	1.86	0.27	-1.84
8,751.0	91.90	264.22	7,418.8	-903.0	-947.8	1,112.0	3.17	-2.58	-1.85
8,847.0	92.95	264.15	7,414.8	-912.7	-1,043.2	1,207.4	1.10	1.09	-0.07
8,879.3	92.98	264.60	7,413.1	-915.9	-1,075.3	1,239.5	1.39	0.08	1.39
WP#2 (H-25CH)									
8,942.0	93.03	265.47	7,409.8	-921.3	-1,137.7	1,301.7	1.39	0.08	1.39
9,037.0	94.53	267.96	7,403.6	-926.7	-1,232.3	1,395.4	3.05	1.58	2.62
9,133.0	93.91	271.67	7,396.5	-927.0	-1,328.1	1,489.2	3.91	-0.65	3.86
9,228.0	94.09	270.60	7,389.9	-925.2	-1,422.8	1,581.6	1.14	0.19	-1.13
9,324.0	90.84	273.00	7,385.7	-922.1	-1,518.7	1,674.8	4.21	-3.39	2.50
9,420.0	90.66	271.10	7,384.5	-918.7	-1,614.6	1,768.0	1.99	-0.19	-1.98
9,515.0	91.98	271.37	7,382.3	-916.7	-1,709.5	1,860.5	1.42	1.39	0.28
9,609.0	91.89	270.61	7,379.1	-915.0	-1,803.5	1,952.2	0.81	-0.10	-0.81
9,705.0	93.56	271.33	7,374.6	-913.4	-1,899.3	2,045.7	1.89	1.74	0.75
9,800.0	93.56	272.71	7,368.7	-910.1	-1,994.1	2,137.8	1.45	0.00	1.45
9,896.0	92.07	273.60	7,363.9	-904.8	-2,089.8	2,230.4	1.81	-1.55	0.93
9,988.9	93.53	273.94	7,359.4	-898.7	-2,182.4	2,319.8	1.61	1.57	0.37
WP#3 (H-25CH)									
9,991.0	93.56	273.95	7,359.3	-898.6	-2,184.5	2,321.8	1.61	1.57	0.37
10,086.0	88.90	271.86	7,357.2	-893.7	-2,279.3	2,413.7	5.38	-4.91	-2.20
10,182.0	88.55	270.12	7,359.4	-892.1	-2,375.3	2,507.3	1.85	-0.36	-1.81
10,277.0	90.13	269.32	7,360.5	-892.5	-2,470.3	2,600.4	1.86	1.66	-0.84
10,372.0	90.84	268.56	7,359.7	-894.3	-2,565.3	2,693.7	1.09	0.75	-0.80

Company:	Bayswater Exploration & Production, LLC	Local Co-ordinate Reference:	Well Walton H-25HC
Project:	SEC.25-T7N-R67W	TVD Reference:	WELL @ 5001.5ft (RKB - 22.5')
Site:	Walton 25D Pad Sec.25-T7N-R67W	MD Reference:	WELL @ 5001.5ft (RKB - 22.5')
Well:	Walton H-25HC	North Reference:	True
Wellbore:	Wellbore #1	Survey Calculation Method:	Minimum Curvature
Design:	Wellbore #1	Database:	EDMNEW

Survey

Measured Depth (ft)	Inclination (°)	Azimuth (°)	Vertical Depth (ft)	+N/-S (ft)	+E/-W (ft)	Vertical Section (ft)	Dogleg Rate (°/100ft)	Build Rate (°/100ft)	Turn Rate (°/100ft)
10,434.2	90.84	267.43	7,358.7	-896.5	-2,627.4	2,755.0	1.81	0.00	-1.81
WP#4 (H-25CH)									
10,468.0	90.84	266.82	7,358.3	-898.2	-2,661.2	2,788.4	1.81	0.00	-1.81
10,563.0	91.28	267.61	7,356.5	-902.8	-2,756.0	2,882.2	0.95	0.46	0.83
10,658.0	93.83	267.57	7,352.3	-906.8	-2,850.8	2,975.9	2.68	2.68	-0.04
10,754.0	94.88	267.69	7,345.0	-910.7	-2,946.5	3,070.3	1.10	1.09	0.13
10,849.0	94.88	268.95	7,336.9	-913.5	-3,041.1	3,163.5	1.32	0.00	1.33
10,945.0	93.21	270.95	7,330.1	-913.6	-3,136.9	3,257.2	2.71	-1.74	2.08
11,040.0	90.84	271.76	7,326.8	-911.3	-3,231.8	3,349.7	2.64	-2.49	0.85
11,104.9	88.97	270.93	7,326.9	-909.8	-3,296.7	3,412.9	3.14	-2.87	-1.27
WP#5 (H-25CH)									
11,135.0	88.11	270.55	7,327.6	-909.4	-3,326.7	3,442.3	3.14	-2.87	-1.27
11,231.0	89.43	267.00	7,329.7	-911.5	-3,422.7	3,536.6	3.94	1.38	-3.70
11,326.0	89.69	266.60	7,330.4	-916.8	-3,517.5	3,630.6	0.50	0.27	-0.42
11,422.0	90.84	265.97	7,330.0	-923.0	-3,613.3	3,725.6	1.37	1.20	-0.66
11,517.0	90.84	266.49	7,328.6	-929.3	-3,708.1	3,819.7	0.55	0.00	0.55
11,613.0	90.22	268.02	7,327.7	-933.9	-3,804.0	3,914.5	1.72	-0.65	1.59
11,708.0	89.78	269.61	7,327.7	-935.8	-3,899.0	4,007.9	1.74	-0.46	1.67
11,751.8	90.06	269.47	7,327.8	-936.2	-3,942.7	4,050.8	0.72	0.65	-0.32
WP#6 (H-25CH)									
11,804.0	90.40	269.30	7,327.5	-936.7	-3,994.9	4,102.0	0.72	0.65	-0.32
11,899.0	89.96	269.90	7,327.2	-937.4	-4,089.9	4,195.2	0.78	-0.46	0.63
11,995.0	88.99	270.46	7,328.1	-937.1	-4,185.9	4,289.1	1.17	-1.01	0.58
12,090.0	89.78	270.61	7,329.1	-936.2	-4,280.9	4,381.9	0.85	0.83	0.16
12,186.0	89.60	269.65	7,329.7	-936.0	-4,376.9	4,475.8	1.02	-0.19	-1.00
12,267.0	90.04	269.08	7,329.9	-936.9	-4,457.9	4,555.3	0.89	0.54	-0.70
12,350.0	90.04	269.08	7,329.9	-938.2	-4,540.9	4,636.8	0.00	0.00	0.00
BHL 1745'FNL, 470'FWL									

Company:	Bayswater Exploration & Production, LLC	Local Co-ordinate Reference:	Well Walton H-25HC
Project:	SEC.25-T7N-R67W	TVD Reference:	WELL @ 5001.5ft (RKB - 22.5')
Site:	Walton 25D Pad Sec.25-T7N-R67W	MD Reference:	WELL @ 5001.5ft (RKB - 22.5')
Well:	Walton H-25HC	North Reference:	True
Wellbore:	Wellbore #1	Survey Calculation Method:	Minimum Curvature
Design:	Wellbore #1	Database:	EDMNEW

Design Targets

Target Name - hit/miss target - Shape	Dip Angle (°)	Dip Dir. (°)	TVD (ft)	+N/-S (ft)	+E/-W (ft)	Northing (ft)	Easting (ft)	Latitude	Longitude
SHL 842'FNL, 252'FE - survey hits target center - Point	0.00	0.00	1.0	0.0	0.0	1,443,971.00	3,185,386.74	40.550186	-104.832879
BHL 1745'FNL, 470'F' - survey misses target center by 9.1ft at 12350.0ft MD (7329.9 TVD, -938.2 N, -4540.9 E) - Point	0.00	0.00	7,329.0	-946.6	-4,544.4	1,442,990.25	3,180,849.72	40.547587	-104.849231
WP#6 (H-25CH) - survey misses target center by 4.4ft at 11751.8ft MD (7327.8 TVD, -936.2 N, -3942.7 E) - Point	0.00	0.00	7,331.0	-939.1	-3,942.7	1,443,002.28	3,181,451.34	40.547607	-104.847066
WP#5 (H-25CH) - survey misses target center by 24.5ft at 11105.3ft MD (7326.9 TVD, -909.8 N, -3297.0 E) - Point	0.00	0.00	7,339.0	-931.1	-3,297.0	1,443,015.13	3,182,096.94	40.547630	-104.844742
WP#3 (H-25CH) - survey misses target center by 18.7ft at 9988.9ft MD (7359.4 TVD, -898.7 N, -2182.4 E) - Point	0.00	0.00	7,360.0	-917.3	-2,183.7	1,443,037.31	3,183,210.07	40.547668	-104.840737
WP#4 (H-25CH) - survey misses target center by 26.4ft at 10434.5ft MD (7358.7 TVD, -896.5 N, -2627.7 E) - Point	0.00	0.00	7,361.0	-922.8	-2,626.4	1,443,028.48	3,182,767.44	40.547653	-104.842329
WP#2 (H-25CH) - survey misses target center by 12.5ft at 8879.2ft MD (7413.1 TVD, -915.9 N, -1075.2 E) - Point	0.00	0.00	7,411.0	-903.6	-1,076.3	1,443,059.34	3,184,317.30	40.547706	-104.836752
WP#1 (H-25CH) - survey misses target center by 11.4ft at 8441.7ft MD (7437.1 TVD, -887.1 N, -639.6 E) - Point	0.00	0.00	7,440.0	-898.1	-639.5	1,443,068.12	3,184,754.03	40.547721	-104.835180

Checked By: _____ Approved By: _____ Date: _____