

PROJECT DETAILS: Weld County, CO NAD 83

Geodetic System: US State Plane 1983  
 Datum: North American Datum 1983  
 Ellipsoid: GRS 1980  
 Zone: Colorado Northern Zone  
 System Datum: Mean Sea Level  
 Local North: True

Project: Weld County, CO NAD 83  
 Site: Anschutz Equus Farms 4-62-9\_10 Pad  
 Well: Anschutz Equus Farms 4-62-9-4956C2  
 Wellbore: OH  
 Design: Plan 1



Azinuths to True North  
 Magnetic North: 8.27°

Magnetic Field  
 Strength: 52609.5nT  
 Dip Angle: 66.97°  
 Date: 10/27/2015  
 Model: BGGM2015

Plan: Plan 1 (Anschutz Equus Farms 4-62-9-4956C2/OH)

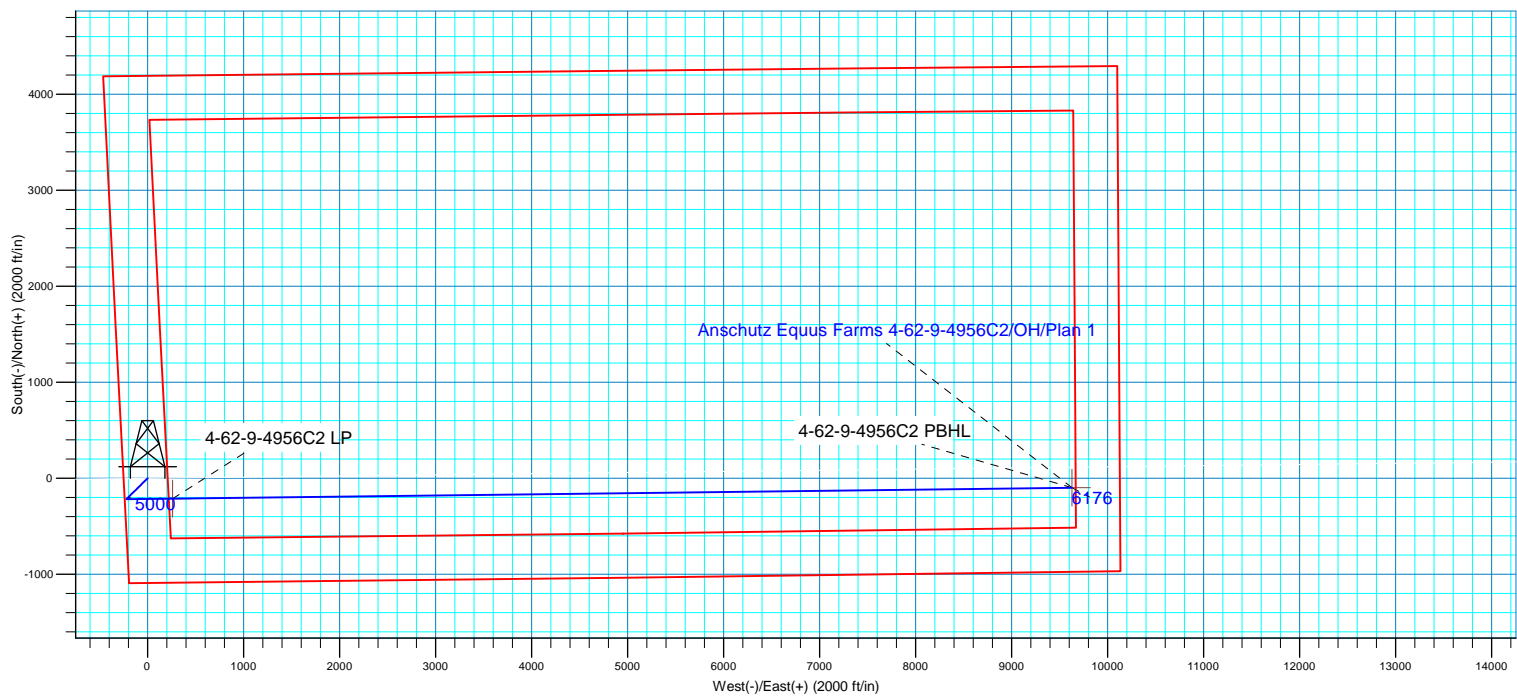
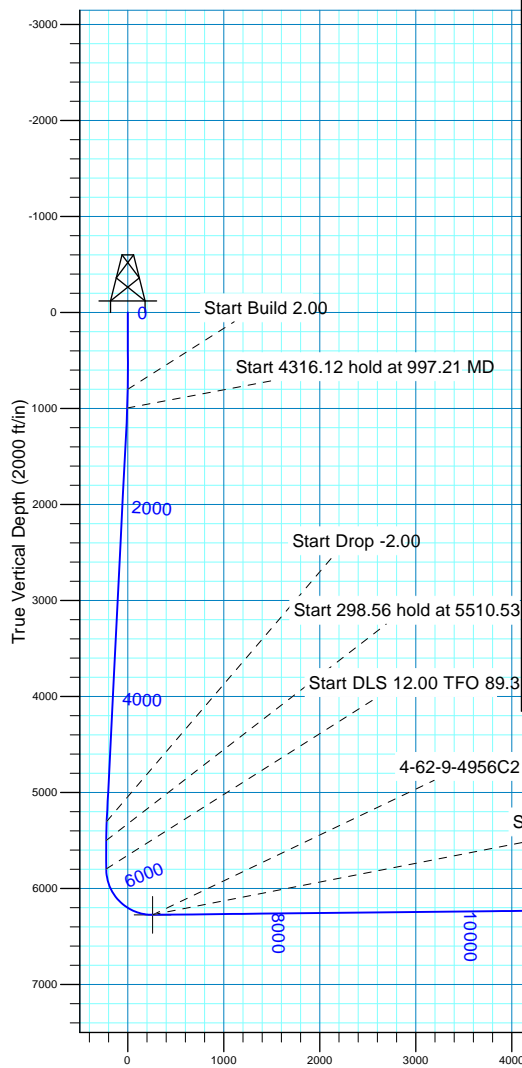
Created By: Seth Burstad Date: 10-27-2015

### SECTION DETAILS

MD	Inc	Azi	TVD	+N/-S	+E/-W	Dleg	TFace	VSect
0.00	0.00	0.00	0.00	0.00	0.00	0.00	0.00	0.00
800.00	0.00	0.00	800.00	0.00	0.00	0.00	0.00	0.00
997.21	3.94	225.53	997.05	-4.75	-4.84	2.00	225.53	-4.90
5313.33	3.94	225.53	5302.95	-212.73	-216.70	0.00	0.00	-219.24
5510.53	0.00	0.00	5500.00	-217.48	-221.54	2.00	180.00	-224.14
5809.09	0.00	0.00	5798.56	-217.48	-221.54	0.00	0.00	-224.14
6564.19	90.61	89.31	6276.00	-211.64	260.99	12.00	89.31	258.42
15933.28	90.61	89.31	6176.00	-98.29	9628.86	0.00	0.00	9626.98

### WELL DETAILS: Anschutz Equus Farms 4-62-9-4956C2

		GL 4526' & KB 16' @ 4542.00ft		4526.00		
+N/-S	+E/-W	Northing	Easting	Latitude	Longitude	
0.00	0.00	1362432.26	3323910.21	40° 19' 20.831 N	104° 20' 17.830 W	





## **Bill Barrett Corp.**

**Weld County, CO NAD 83**

**Anschutz Equus Farms 4-62-9\_10 Pad**

**Anschutz Equus Farms 4-62-9-4956C2**

**OH**

**Plan: Plan 1**

## **Standard Planning Report**

**27 October, 2015**



<b>Database:</b>	Casper District	<b>Local Co-ordinate Reference:</b>	Well Anschutz Equus Farms 4-62-9-4956C2
<b>Company:</b>	Bill Barrett Corp.	<b>TVD Reference:</b>	GL 4526' & KB 16' @ 4542.00ft
<b>Project:</b>	Weld County, CO NAD 83	<b>MD Reference:</b>	GL 4526' & KB 16' @ 4542.00ft
<b>Site:</b>	Anschutz Equus Farms 4-62-9_10 Pad	<b>North Reference:</b>	True
<b>Well:</b>	Anschutz Equus Farms 4-62-9-4956C2	<b>Survey Calculation Method:</b>	Minimum Curvature
<b>Wellbore:</b>	OH		
<b>Design:</b>	Plan 1		

<b>Project</b>	Weld County, CO NAD 83		
<b>Map System:</b>	US State Plane 1983	<b>System Datum:</b>	Mean Sea Level
<b>Geo Datum:</b>	North American Datum 1983		
<b>Map Zone:</b>	Colorado Northern Zone		

Site		Anschutz Equus Farms 4-62-9_10 Pad, Site Center : 4-62-09-6457D2B			
Site Position:		Northing:	1,362,402.78 usft	Latitude:	40° 19' 20.539 N
From:	Lat/Long	Easting:	3,323,912.00 usft	Longitude:	104° 20' 17.812 W
Position Uncertainty:	0.00 ft	Slot Radius:	13.200 in	Grid Convergence:	0.75 °

Well	Anschutz Equus Farms 4-62-9-4956C2, 1090' FSL 250' FWL Sec 9 T4N R62W					
Well Position	+N/-S	29.49 ft	Northing:	1,362,432.25 usft	Latitude:	40° 19' 20.831 N
	+E/-W	-1.39 ft	Easting:	3,323,910.22 usft	Longitude:	104° 20' 17.830 W
Position Uncertainty		0.00 ft	Wellhead Elevation:	0.00 ft	Ground Level:	4,526.00 ft

<b>Wellbore</b>	OH				
<b>Magnetics</b>	<b>Model Name</b>	<b>Sample Date</b>	<b>Declination (°)</b>	<b>Dip Angle (°)</b>	<b>Field Strength (nT)</b>
	BGGM2015	10/27/2015	8.27	66.97	52,610

<b>Design</b>	Plan 1			
<b>Audit Notes:</b>				
<b>Version:</b>	<b>Phase:</b>	PLAN	<b>Tie On Depth:</b>	0.00
<b>Vertical Section:</b>	<b>Depth From (TVD) (ft)</b>	<b>+N/-S (ft)</b>	<b>+E/-W (ft)</b>	<b>Direction (°)</b>
	0.00	0.00	0.00	89.31

<b>Plan Sections</b>										
Measured Depth (ft)	Inclination (°)	Azimuth (°)	Vertical Depth (ft)	+N/-S (ft)	+E/-W (ft)	Dogleg Rate (°/100ft)	Build Rate (°/100ft)	Turn Rate (°/100ft)	TFO (°)	Target
0.00	0.00	0.00	0.00	0.00	0.00	0.00	0.00	0.00	0.00	
800.00	0.00	0.00	800.00	0.00	0.00	0.00	0.00	0.00	0.00	
997.21	3.94	225.53	997.05	-4.75	-4.84	2.00	2.00	0.00	225.53	
5,313.33	3.94	225.53	5,302.95	-212.73	-216.70	0.00	0.00	0.00	0.00	
5,510.53	0.00	0.00	5,500.00	-217.48	-221.54	2.00	-2.00	0.00	180.00	
5,809.09	0.00	0.00	5,798.56	-217.48	-221.54	0.00	0.00	0.00	0.00	
6,564.19	90.61	89.31	6,276.00	-211.64	260.99	12.00	12.00	11.83	89.31	
15,933.28	90.61	89.31	6,176.00	-98.28	9,628.86	0.00	0.00	0.00	0.00	4-62-9-4956C2 PBHL

<b>Database:</b>	Casper District	<b>Local Co-ordinate Reference:</b>	Well Anschutz Equus Farms 4-62-9-4956C2
<b>Company:</b>	Bill Barrett Corp.	<b>TVD Reference:</b>	GL 4526' & KB 16' @ 4542.00ft
<b>Project:</b>	Weld County, CO NAD 83	<b>MD Reference:</b>	GL 4526' & KB 16' @ 4542.00ft
<b>Site:</b>	Anschutz Equus Farms 4-62-9_10 Pad	<b>North Reference:</b>	True
<b>Well:</b>	Anschutz Equus Farms 4-62-9-4956C2	<b>Survey Calculation Method:</b>	Minimum Curvature
<b>Wellbore:</b>	OH		
<b>Design:</b>	Plan 1		

Planned Survey									
Measured Depth (ft)	Inclination (°)	Azimuth (°)	Vertical Depth (ft)	+N/-S (ft)	+E/-W (ft)	Vertical Section (ft)	Dogleg Rate (°/100ft)	Build Rate (°/100ft)	Turn Rate (°/100ft)
0.00	0.00	0.00	0.00	0.00	0.00	0.00	0.00	0.00	0.00
100.00	0.00	0.00	100.00	0.00	0.00	0.00	0.00	0.00	0.00
200.00	0.00	0.00	200.00	0.00	0.00	0.00	0.00	0.00	0.00
300.00	0.00	0.00	300.00	0.00	0.00	0.00	0.00	0.00	0.00
400.00	0.00	0.00	400.00	0.00	0.00	0.00	0.00	0.00	0.00
500.00	0.00	0.00	500.00	0.00	0.00	0.00	0.00	0.00	0.00
600.00	0.00	0.00	600.00	0.00	0.00	0.00	0.00	0.00	0.00
700.00	0.00	0.00	700.00	0.00	0.00	0.00	0.00	0.00	0.00
800.00	0.00	0.00	800.00	0.00	0.00	0.00	0.00	0.00	0.00
<b>Start Build 2.00</b>									
900.00	2.00	225.53	899.98	-1.22	-1.25	-1.26	2.00	2.00	0.00
997.21	3.94	225.53	997.05	-4.75	-4.84	-4.90	2.00	2.00	0.00
<b>Start 4316.12 hold at 997.21 MD</b>									
1,000.00	3.94	225.53	999.84	-4.89	-4.98	-5.04	0.00	0.00	0.00
1,100.00	3.94	225.53	1,099.60	-9.71	-9.89	-10.00	0.00	0.00	0.00
1,200.00	3.94	225.53	1,199.36	-14.52	-14.80	-14.97	0.00	0.00	0.00
1,300.00	3.94	225.53	1,299.13	-19.34	-19.70	-19.94	0.00	0.00	0.00
1,400.00	3.94	225.53	1,398.89	-24.16	-24.61	-24.90	0.00	0.00	0.00
1,500.00	3.94	225.53	1,498.65	-28.98	-29.52	-29.87	0.00	0.00	0.00
1,600.00	3.94	225.53	1,598.42	-33.80	-34.43	-34.83	0.00	0.00	0.00
1,700.00	3.94	225.53	1,698.18	-38.62	-39.34	-39.80	0.00	0.00	0.00
1,800.00	3.94	225.53	1,797.94	-43.44	-44.25	-44.77	0.00	0.00	0.00
1,900.00	3.94	225.53	1,897.71	-48.25	-49.16	-49.73	0.00	0.00	0.00
2,000.00	3.94	225.53	1,997.47	-53.07	-54.06	-54.70	0.00	0.00	0.00
2,100.00	3.94	225.53	2,097.23	-57.89	-58.97	-59.67	0.00	0.00	0.00
2,200.00	3.94	225.53	2,197.00	-62.71	-63.88	-64.63	0.00	0.00	0.00
2,300.00	3.94	225.53	2,296.76	-67.53	-68.79	-69.60	0.00	0.00	0.00
2,400.00	3.94	225.53	2,396.52	-72.35	-73.70	-74.56	0.00	0.00	0.00
2,500.00	3.94	225.53	2,496.29	-77.17	-78.61	-79.53	0.00	0.00	0.00
2,600.00	3.94	225.53	2,596.05	-81.98	-83.51	-84.50	0.00	0.00	0.00
2,700.00	3.94	225.53	2,695.81	-86.80	-88.42	-89.46	0.00	0.00	0.00
2,800.00	3.94	225.53	2,795.57	-91.62	-93.33	-94.43	0.00	0.00	0.00
2,900.00	3.94	225.53	2,895.34	-96.44	-98.24	-99.39	0.00	0.00	0.00
3,000.00	3.94	225.53	2,995.10	-101.26	-103.15	-104.36	0.00	0.00	0.00
3,100.00	3.94	225.53	3,094.86	-106.08	-108.06	-109.33	0.00	0.00	0.00
3,200.00	3.94	225.53	3,194.63	-110.90	-112.97	-114.29	0.00	0.00	0.00
3,300.00	3.94	225.53	3,294.39	-115.71	-117.87	-119.26	0.00	0.00	0.00
3,400.00	3.94	225.53	3,394.15	-120.53	-122.78	-124.23	0.00	0.00	0.00
3,500.00	3.94	225.53	3,493.92	-125.35	-127.69	-129.19	0.00	0.00	0.00
3,600.00	3.94	225.53	3,593.68	-130.17	-132.60	-134.16	0.00	0.00	0.00
3,700.00	3.94	225.53	3,693.44	-134.99	-137.51	-139.12	0.00	0.00	0.00
3,800.00	3.94	225.53	3,793.21	-139.81	-142.42	-144.09	0.00	0.00	0.00
3,900.00	3.94	225.53	3,892.97	-144.63	-147.33	-149.06	0.00	0.00	0.00
4,000.00	3.94	225.53	3,992.73	-149.44	-152.23	-154.02	0.00	0.00	0.00
4,100.00	3.94	225.53	4,092.50	-154.26	-157.14	-158.99	0.00	0.00	0.00
4,200.00	3.94	225.53	4,192.26	-159.08	-162.05	-163.95	0.00	0.00	0.00
4,300.00	3.94	225.53	4,292.02	-163.90	-166.96	-168.92	0.00	0.00	0.00
4,400.00	3.94	225.53	4,391.79	-168.72	-171.87	-173.89	0.00	0.00	0.00
4,500.00	3.94	225.53	4,491.55	-173.54	-176.78	-178.85	0.00	0.00	0.00
4,600.00	3.94	225.53	4,591.31	-178.35	-181.68	-183.82	0.00	0.00	0.00
4,700.00	3.94	225.53	4,691.07	-183.17	-186.59	-188.79	0.00	0.00	0.00
4,800.00	3.94	225.53	4,790.84	-187.99	-191.50	-193.75	0.00	0.00	0.00
4,900.00	3.94	225.53	4,890.60	-192.81	-196.41	-198.72	0.00	0.00	0.00
5,000.00	3.94	225.53	4,990.36	-197.63	-201.32	-203.68	0.00	0.00	0.00

<b>Database:</b>	Casper District	<b>Local Co-ordinate Reference:</b>	Well Anschutz Equus Farms 4-62-9-4956C2
<b>Company:</b>	Bill Barrett Corp.	<b>TVD Reference:</b>	GL 4526' & KB 16' @ 4542.00ft
<b>Project:</b>	Weld County, CO NAD 83	<b>MD Reference:</b>	GL 4526' & KB 16' @ 4542.00ft
<b>Site:</b>	Anschutz Equus Farms 4-62-9_10 Pad	<b>North Reference:</b>	True
<b>Well:</b>	Anschutz Equus Farms 4-62-9-4956C2	<b>Survey Calculation Method:</b>	Minimum Curvature
<b>Wellbore:</b>	OH		
<b>Design:</b>	Plan 1		

Planned Survey									
Measured Depth (ft)	Inclination (°)	Azimuth (°)	Vertical Depth (ft)	+N/-S (ft)	+E/-W (ft)	Vertical Section (ft)	Dogleg Rate (°/100ft)	Build Rate (°/100ft)	Turn Rate (°/100ft)
5,100.00	3.94	225.53	5,090.13	-202.45	-206.23	-208.65	0.00	0.00	0.00
5,200.00	3.94	225.53	5,189.89	-207.27	-211.14	-213.62	0.00	0.00	0.00
5,300.00	3.94	225.53	5,289.65	-212.08	-216.04	-218.58	0.00	0.00	0.00
5,313.33	3.94	225.53	5,302.95	-212.73	-216.70	-219.24	0.00	0.00	0.00
<b>Start Drop -2.00</b>									
5,400.00	2.21	225.53	5,389.49	-215.99	-220.02	-222.60	2.00	-2.00	0.00
5,500.00	0.21	225.53	5,489.47	-217.47	-221.53	-224.13	2.00	-2.00	0.00
5,510.53	0.00	0.00	5,500.00	-217.48	-221.54	-224.14	2.00	-2.00	0.00
<b>Start 298.56 hold at 5510.53 MD</b>									
5,600.00	0.00	0.00	5,589.47	-217.48	-221.54	-224.14	0.00	0.00	0.00
5,700.00	0.00	0.00	5,689.47	-217.48	-221.54	-224.14	0.00	0.00	0.00
5,800.00	0.00	0.00	5,789.47	-217.48	-221.54	-224.14	0.00	0.00	0.00
5,809.09	0.00	0.00	5,798.56	-217.48	-221.54	-224.14	0.00	0.00	0.00
<b>Start DLS 12.00 TFO 89.31</b>									
5,900.00	10.91	89.31	5,888.92	-217.38	-212.91	-215.52	12.00	12.00	0.00
6,000.00	22.91	89.31	5,984.42	-217.02	-183.88	-186.48	12.00	12.00	0.00
6,100.00	34.91	89.31	6,071.80	-216.44	-135.63	-138.23	12.00	12.00	0.00
6,200.00	46.91	89.31	6,147.24	-215.65	-70.27	-72.86	12.00	12.00	0.00
6,300.00	58.91	89.31	6,207.44	-214.69	9.34	6.76	12.00	12.00	0.00
6,400.00	70.91	89.31	6,249.76	-213.59	99.74	97.16	12.00	12.00	0.00
6,500.00	82.91	89.31	6,272.37	-212.42	196.95	194.38	12.00	12.00	0.00
6,564.19	90.61	89.31	6,276.00	-211.64	260.99	258.42	12.00	12.00	0.00
<b>Start 9369.09 hold at 6564.19 MD</b>									
6,600.00	90.61	89.31	6,275.62	-211.21	296.79	294.23	0.00	0.00	0.00
6,700.00	90.61	89.31	6,274.55	-210.00	396.78	394.22	0.00	0.00	0.00
6,800.00	90.61	89.31	6,273.48	-208.79	496.77	494.21	0.00	0.00	0.00
6,900.00	90.61	89.31	6,272.41	-207.58	596.75	594.21	0.00	0.00	0.00
7,000.00	90.61	89.31	6,271.35	-206.37	696.74	694.20	0.00	0.00	0.00
7,100.00	90.61	89.31	6,270.28	-205.16	796.73	794.20	0.00	0.00	0.00
7,200.00	90.61	89.31	6,269.21	-203.95	896.71	894.19	0.00	0.00	0.00
7,300.00	90.61	89.31	6,268.14	-202.74	996.70	994.19	0.00	0.00	0.00
7,400.00	90.61	89.31	6,267.08	-201.53	1,096.69	1,094.18	0.00	0.00	0.00
7,500.00	90.61	89.31	6,266.01	-200.32	1,196.67	1,194.17	0.00	0.00	0.00
7,600.00	90.61	89.31	6,264.94	-199.11	1,296.66	1,294.17	0.00	0.00	0.00
7,700.00	90.61	89.31	6,263.88	-197.90	1,396.65	1,394.16	0.00	0.00	0.00
7,800.00	90.61	89.31	6,262.81	-196.69	1,496.63	1,494.16	0.00	0.00	0.00
7,900.00	90.61	89.31	6,261.74	-195.48	1,596.62	1,594.15	0.00	0.00	0.00
8,000.00	90.61	89.31	6,260.67	-194.27	1,696.61	1,694.15	0.00	0.00	0.00
8,100.00	90.61	89.31	6,259.61	-193.06	1,796.60	1,794.14	0.00	0.00	0.00
8,200.00	90.61	89.31	6,258.54	-191.85	1,896.58	1,894.13	0.00	0.00	0.00
8,300.00	90.61	89.31	6,257.47	-190.64	1,996.57	1,994.13	0.00	0.00	0.00
8,400.00	90.61	89.31	6,256.40	-189.43	2,096.56	2,094.12	0.00	0.00	0.00
8,500.00	90.61	89.31	6,255.34	-188.22	2,196.54	2,194.12	0.00	0.00	0.00
8,600.00	90.61	89.31	6,254.27	-187.01	2,296.53	2,294.11	0.00	0.00	0.00
8,700.00	90.61	89.31	6,253.20	-185.80	2,396.52	2,394.11	0.00	0.00	0.00
8,800.00	90.61	89.31	6,252.13	-184.59	2,496.50	2,494.10	0.00	0.00	0.00
8,900.00	90.61	89.31	6,251.07	-183.38	2,596.49	2,594.10	0.00	0.00	0.00
9,000.00	90.61	89.31	6,250.00	-182.17	2,696.48	2,694.09	0.00	0.00	0.00
9,100.00	90.61	89.31	6,248.93	-180.96	2,796.47	2,794.08	0.00	0.00	0.00
9,200.00	90.61	89.31	6,247.87	-179.75	2,896.45	2,894.08	0.00	0.00	0.00
9,300.00	90.61	89.31	6,246.80	-178.54	2,996.44	2,994.07	0.00	0.00	0.00
9,400.00	90.61	89.31	6,245.73	-177.33	3,096.43	3,094.07	0.00	0.00	0.00
9,500.00	90.61	89.31	6,244.66	-176.12	3,196.41	3,194.06	0.00	0.00	0.00

<b>Database:</b>	Casper District	<b>Local Co-ordinate Reference:</b>	Well Anschutz Equus Farms 4-62-9-4956C2
<b>Company:</b>	Bill Barrett Corp.	<b>TVD Reference:</b>	GL 4526' & KB 16' @ 4542.00ft
<b>Project:</b>	Weld County, CO NAD 83	<b>MD Reference:</b>	GL 4526' & KB 16' @ 4542.00ft
<b>Site:</b>	Anschutz Equus Farms 4-62-9_10 Pad	<b>North Reference:</b>	True
<b>Well:</b>	Anschutz Equus Farms 4-62-9-4956C2	<b>Survey Calculation Method:</b>	Minimum Curvature
<b>Wellbore:</b>	OH		
<b>Design:</b>	Plan 1		

Planned Survey									
Measured Depth (ft)	Inclination (°)	Azimuth (°)	Vertical Depth (ft)	+N/-S (ft)	+E/-W (ft)	Vertical Section (ft)	Dogleg Rate (°/100ft)	Build Rate (°/100ft)	Turn Rate (°/100ft)
9,600.00	90.61	89.31	6,243.60	-174.91	3,296.40	3,294.06	0.00	0.00	0.00
9,700.00	90.61	89.31	6,242.53	-173.70	3,396.39	3,394.05	0.00	0.00	0.00
9,800.00	90.61	89.31	6,241.46	-172.49	3,496.37	3,494.04	0.00	0.00	0.00
9,900.00	90.61	89.31	6,240.39	-171.28	3,596.36	3,594.04	0.00	0.00	0.00
10,000.00	90.61	89.31	6,239.33	-170.07	3,696.35	3,694.03	0.00	0.00	0.00
10,100.00	90.61	89.31	6,238.26	-168.86	3,796.34	3,794.03	0.00	0.00	0.00
10,200.00	90.61	89.31	6,237.19	-167.65	3,896.32	3,894.02	0.00	0.00	0.00
10,300.00	90.61	89.31	6,236.12	-166.44	3,996.31	3,994.02	0.00	0.00	0.00
10,400.00	90.61	89.31	6,235.06	-165.23	4,096.30	4,094.01	0.00	0.00	0.00
10,500.00	90.61	89.31	6,233.99	-164.02	4,196.28	4,194.00	0.00	0.00	0.00
10,600.00	90.61	89.31	6,232.92	-162.81	4,296.27	4,294.00	0.00	0.00	0.00
10,700.00	90.61	89.31	6,231.86	-161.60	4,396.26	4,393.99	0.00	0.00	0.00
10,800.00	90.61	89.31	6,230.79	-160.39	4,496.24	4,493.99	0.00	0.00	0.00
10,900.00	90.61	89.31	6,229.72	-159.18	4,596.23	4,593.98	0.00	0.00	0.00
11,000.00	90.61	89.31	6,228.65	-157.97	4,696.22	4,693.98	0.00	0.00	0.00
11,100.00	90.61	89.31	6,227.59	-156.76	4,796.21	4,793.97	0.00	0.00	0.00
11,200.00	90.61	89.31	6,226.52	-155.55	4,896.19	4,893.96	0.00	0.00	0.00
11,300.00	90.61	89.31	6,225.45	-154.34	4,996.18	4,993.96	0.00	0.00	0.00
11,400.00	90.61	89.31	6,224.38	-153.13	5,096.17	5,093.95	0.00	0.00	0.00
11,500.00	90.61	89.31	6,223.32	-151.92	5,196.15	5,193.95	0.00	0.00	0.00
11,600.00	90.61	89.31	6,222.25	-150.71	5,296.14	5,293.94	0.00	0.00	0.00
11,700.00	90.61	89.31	6,221.18	-149.50	5,396.13	5,393.94	0.00	0.00	0.00
11,800.00	90.61	89.31	6,220.12	-148.29	5,496.11	5,493.93	0.00	0.00	0.00
11,900.00	90.61	89.31	6,219.05	-147.08	5,596.10	5,593.92	0.00	0.00	0.00
12,000.00	90.61	89.31	6,217.98	-145.87	5,696.09	5,693.92	0.00	0.00	0.00
12,100.00	90.61	89.31	6,216.91	-144.66	5,796.08	5,793.91	0.00	0.00	0.00
12,200.00	90.61	89.31	6,215.85	-143.45	5,896.06	5,893.91	0.00	0.00	0.00
12,300.00	90.61	89.31	6,214.78	-142.24	5,996.05	5,993.90	0.00	0.00	0.00
12,400.00	90.61	89.31	6,213.71	-141.03	6,096.04	6,093.90	0.00	0.00	0.00
12,500.00	90.61	89.31	6,212.64	-139.82	6,196.02	6,193.89	0.00	0.00	0.00
12,600.00	90.61	89.31	6,211.58	-138.61	6,296.01	6,293.88	0.00	0.00	0.00
12,700.00	90.61	89.31	6,210.51	-137.40	6,396.00	6,393.88	0.00	0.00	0.00
12,800.00	90.61	89.31	6,209.44	-136.19	6,495.98	6,493.87	0.00	0.00	0.00
12,900.00	90.61	89.31	6,208.37	-134.98	6,595.97	6,593.87	0.00	0.00	0.00
13,000.00	90.61	89.31	6,207.31	-133.77	6,695.96	6,693.86	0.00	0.00	0.00
13,100.00	90.61	89.31	6,206.24	-132.56	6,795.95	6,793.86	0.00	0.00	0.00
13,200.00	90.61	89.31	6,205.17	-131.35	6,895.93	6,893.85	0.00	0.00	0.00
13,300.00	90.61	89.31	6,204.11	-130.14	6,995.92	6,993.84	0.00	0.00	0.00
13,400.00	90.61	89.31	6,203.04	-128.93	7,095.91	7,093.84	0.00	0.00	0.00
13,500.00	90.61	89.31	6,201.97	-127.72	7,195.89	7,193.83	0.00	0.00	0.00
13,600.00	90.61	89.31	6,200.90	-126.52	7,295.88	7,293.83	0.00	0.00	0.00
13,700.00	90.61	89.31	6,199.84	-125.31	7,395.87	7,393.82	0.00	0.00	0.00
13,800.00	90.61	89.31	6,198.77	-124.10	7,495.85	7,493.82	0.00	0.00	0.00
13,900.00	90.61	89.31	6,197.70	-122.89	7,595.84	7,593.81	0.00	0.00	0.00
14,000.00	90.61	89.31	6,196.63	-121.68	7,695.83	7,693.80	0.00	0.00	0.00
14,100.00	90.61	89.31	6,195.57	-120.47	7,795.82	7,793.80	0.00	0.00	0.00
14,200.00	90.61	89.31	6,194.50	-119.26	7,895.80	7,893.79	0.00	0.00	0.00
14,300.00	90.61	89.31	6,193.43	-118.05	7,995.79	7,993.79	0.00	0.00	0.00
14,400.00	90.61	89.31	6,192.37	-116.84	8,095.78	8,093.78	0.00	0.00	0.00
14,500.00	90.61	89.31	6,191.30	-115.63	8,195.76	8,193.78	0.00	0.00	0.00
14,600.00	90.61	89.31	6,190.23	-114.42	8,295.75	8,293.77	0.00	0.00	0.00
14,700.00	90.61	89.31	6,189.16	-113.21	8,395.74	8,393.76	0.00	0.00	0.00
14,800.00	90.61	89.31	6,188.10	-112.00	8,495.72	8,493.76	0.00	0.00	0.00
14,900.00	90.61	89.31	6,187.03	-110.79	8,595.71	8,593.75	0.00	0.00	0.00

<b>Database:</b>	Casper District	<b>Local Co-ordinate Reference:</b>	Well Anschutz Equus Farms 4-62-9-4956C2
<b>Company:</b>	Bill Barrett Corp.	<b>TVD Reference:</b>	GL 4526' & KB 16' @ 4542.00ft
<b>Project:</b>	Weld County, CO NAD 83	<b>MD Reference:</b>	GL 4526' & KB 16' @ 4542.00ft
<b>Site:</b>	Anschutz Equus Farms 4-62-9_10 Pad	<b>North Reference:</b>	True
<b>Well:</b>	Anschutz Equus Farms 4-62-9-4956C2	<b>Survey Calculation Method:</b>	Minimum Curvature
<b>Wellbore:</b>	OH		
<b>Design:</b>	Plan 1		

Planned Survey										
Measured Depth (ft)	Inclination (°)	Azimuth (°)	Vertical Depth (ft)	+N/-S (ft)	+E/-W (ft)	Vertical Section (ft)	Dogleg Rate (°/100ft)	Build Rate (°/100ft)	Turn Rate (°/100ft)	
15,000.00	90.61	89.31	6,185.96	-109.58	8,695.70	8,693.75	0.00	0.00	0.00	
15,100.00	90.61	89.31	6,184.89	-108.37	8,795.68	8,793.74	0.00	0.00	0.00	
15,200.00	90.61	89.31	6,183.83	-107.16	8,895.67	8,893.74	0.00	0.00	0.00	
15,300.00	90.61	89.31	6,182.76	-105.95	8,995.66	8,993.73	0.00	0.00	0.00	
15,400.00	90.61	89.31	6,181.69	-104.74	9,095.65	9,093.73	0.00	0.00	0.00	
15,500.00	90.61	89.31	6,180.62	-103.53	9,195.63	9,193.72	0.00	0.00	0.00	
15,600.00	90.61	89.31	6,179.56	-102.32	9,295.62	9,293.71	0.00	0.00	0.00	
15,700.00	90.61	89.31	6,178.49	-101.11	9,395.61	9,393.71	0.00	0.00	0.00	
15,800.00	90.61	89.31	6,177.42	-99.90	9,495.59	9,493.70	0.00	0.00	0.00	
15,900.00	90.61	89.31	6,176.36	-98.69	9,595.58	9,593.70	0.00	0.00	0.00	
15,933.28	90.61	89.31	6,176.00	-98.28	9,628.86	9,626.98	0.00	0.00	0.00	
TD at 15933.28										

Design Targets										
Target Name	Dip Angle (°)	Dip Dir. (°)	TVD (ft)	+N/-S (ft)	+E/-W (ft)	Northing (usft)	Easting (usft)	Latitude	Longitude	
- hit/miss target										
- Shape										
4-62-9-4956C2 PBHL	0.00	0.00	6,176.00	-98.28	9,628.86	1,362,460.11	3,333,539.52	40° 19' 19.841 N	104° 18' 13.511 W	
- plan hits target center										
- Point										
4-62-9-4956C2 LP	0.00	0.00	6,276.00	-211.63	260.99	1,362,224.05	3,324,173.95	40° 19' 18.739 N	104° 20' 14.460 W	
- plan misses target center by 0.01ft at 6564.19ft MD (6276.00 TVD, -211.64 N, 260.99 E)										
- Point										

Plan Annotations					
Measured Depth (ft)	Vertical Depth (ft)	Local Coordinates			
		+N/-S (ft)	+E/-W (ft)	Comment	
800.00	800.00	0.00	0.00	Start Build 2.00	
997.21	997.05	-4.75	-4.84	Start 4316.12 hold at 997.21 MD	
5,313.33	5,302.95	-212.73	-216.70	Start Drop -2.00	
5,510.53	5,500.00	-217.48	-221.54	Start 298.56 hold at 5510.53 MD	
5,809.09	5,798.56	-217.48	-221.54	Start DLS 12.00 TFO 89.31	
6,564.19	6,276.00	-211.64	260.99	Start 9369.09 hold at 6564.19 MD	
15,933.28	6,176.00	-98.28	9,628.86	TD at 15933.28	