

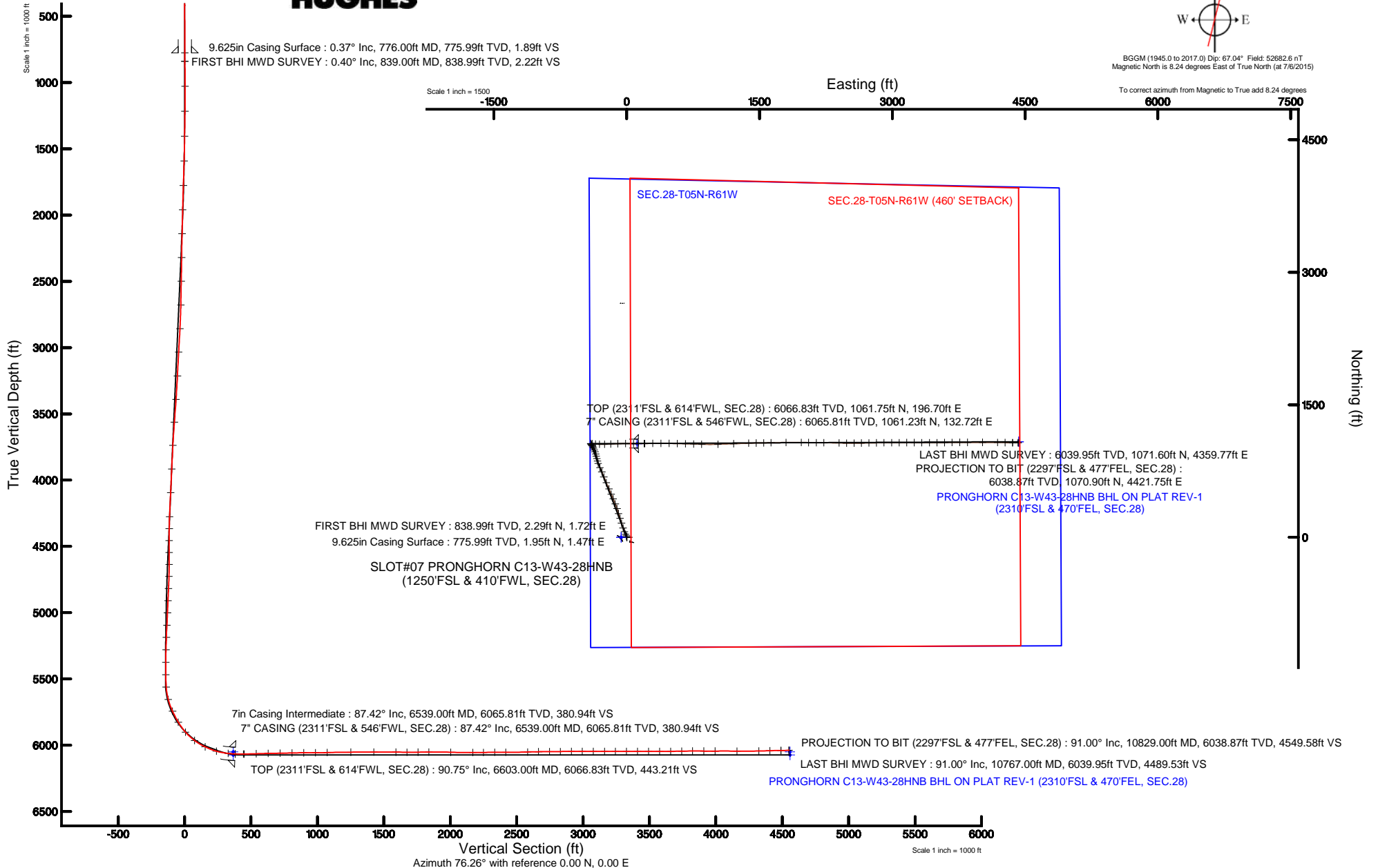
BONANZA CREEK OIL COMPANY

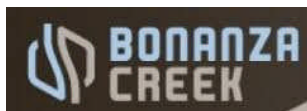
Location: COLORADO Slot: SLOT#07 PRONGHORN C13-W43-28HNB (1250'FSL & 410'FWL, SEC.28)
Field: WELD COUNTY Well: PRONGHORN C13-W43-28HNB
Facility: SEC.28-T5N-R61W Wellbore: PRONGHORN C13-W43-28HNB PWB



Plot reference wellpath is PRONGHORN C13-W43-28HNB PWB (REV-B.0)

True vertical depths are referenced to XTREME 20 (17.2KB) (RKB)	Grid System: NAD83 / Lambert Colorado SP, Northern Zone (501), US feet
Measured depths are referenced to XTREME 20 (17.2KB) (RKB)	North Reference: True north
XTREME 20 (17.2KB) (RKB) to Mean Sea Level: 4614.2 feet	Scale: True distance
Mean Sea Level to Mud line (At Slot: SLOT#07 PRONGHORN C13-W43-28HNB (1250'FSL & 410'FWL, SEC.28)): 0 feet	Depths are in feet
Coordinates are in feet referenced to Slot	Created by: ingnjamr on 10/30/2015





Actual Wellpath Report

PRONGHORN C13-W43-28HNB AWP

Page 1 of 5



REFERENCE WELLPATH IDENTIFICATION			
Operator	BONANZA CREEK OIL COMPANY	Slot	SLOT#07 PRONGHORN C13-W43-28HNB (1250'FSL & 410'FWL, SEC.28)
Area	COLORADO	Well	PRONGHORN C13-W43-28HNB
Field	WELD COUNTY	Wellbore	PRONGHORN C13-W43-28HNB AWB
Facility	SEC.28-T5N-R61W		

REPORT SETUP INFORMATION			
Projection System	NAD83 / Lambert Colorado SP, Northern Zone (501), US feet	Software System	WellArchitect® 4.1.1
North Reference	True	User	Ingmjmr
Scale	0.999959	Report Generated	10/30/2015 at 10:09:49 AM
Convergence at slot	0.83° East	Database/Source file	WA_DEN_Denver_Defn/PRONGHORN_C13-W43-28HNB_AWB.xml

WELLPATH LOCATION						
	Local coordinates		Grid coordinates		Geographic coordinates	
	North[ft]	East[ft]	Easting[US ft]	Northing[US ft]	Latitude	Longitude
Slot Location	-2648.54	27.87	3356058.43	1379472.17	40°22'04.836"N	104°13'19.632"W
Facility Reference Pt			3355992.41	1382119.92	40°22'31.008"N	104°13'19.992"W
Field Reference Pt			3335925.10	1457282.25	40°34'56.460"N	104°17'26.016"W

WELLPATH DATUM			
Calculation method	Minimum curvature	XTREME 20 (17.2'KB) (RKB) to Facility Vertical Datum	4614.20ft
Horizontal Reference Pt	Slot	XTREME 20 (17.2'KB) (RKB) to Mean Sea Level	4614.20ft
Vertical Reference Pt	XTREME 20 (17.2'KB) (RKB)	XTREME 20 (17.2'KB) (RKB) to Mud Line at Slot (SLOT#07 PRONGHORN C13-W43-28HNB (1250'FSL & 410'FWL, SEC.28))	4614.20ft
MD Reference Pt	XTREME 20 (17.2'KB) (RKB)	Section Origin	N 0.00, E 0.00 ft
Field Vertical Reference	Mean Sea Level	Section Azimuth	76.26°



Actual Wellpath Report

PRONGHORN C13-W43-28HNB AWP

Page 2 of 5



REFERENCE WELLPATH IDENTIFICATION			
Operator	BONANZA CREEK OIL COMPANY	Slot	SLOT#07 PRONGHORN C13-W43-28HNB (1250'FSL & 410'FWL, SEC.28)
Area	COLORADO	Well	PRONGHORN C13-W43-28HNB
Field	WELD COUNTY	Wellbore	PRONGHORN C13-W43-28HNB AWP
Facility	SEC.28-T5N-R61W		

WELLPATH DATA (88 stations) † = interpolated/extrapolated station								
MD [ft]	Inclination [°]	Azimuth [°]	TVD [ft]	Vert Sect [ft]	North [ft]	East [ft]	DLS [°/100ft]	Comments
0.00†	0.000	36.950	0.00	0.00	0.00	0.00	0.00	
17.20	0.000	36.950	17.20	0.00	0.00	0.00	0.00	
839.00	0.400	36.950	838.99	2.22	2.29	1.72	0.05	FIRST BHI MWD SURVEY
1028.00	0.300	45.160	1027.99	3.15	3.17	2.47	0.06	
1216.00	2.350	331.030	1215.93	2.56	6.89	0.95	1.22	
1405.00	4.600	335.480	1404.58	0.13	17.17	-4.07	1.20	
1593.00	7.660	334.430	1591.48	-3.85	35.34	-12.61	1.63	
1781.00	11.720	337.310	1776.76	-9.40	64.27	-25.39	2.17	
1970.00	15.850	341.180	1960.28	-14.67	106.43	-41.12	2.24	
2159.00	18.570	342.450	2140.80	-18.96	159.56	-58.53	1.45	
2347.00	17.070	343.510	2319.78	-22.28	214.57	-75.39	0.82	
2535.00	18.300	343.160	2498.89	-25.20	269.28	-91.77	0.66	
2724.00	17.370	342.740	2678.80	-28.54	324.62	-108.74	0.50	
2911.00	18.620	337.230	2856.66	-34.94	378.81	-128.58	1.13	
3099.00	19.360	336.730	3034.43	-44.82	435.11	-152.51	0.40	
3287.00	16.810	337.420	3213.13	-54.16	488.85	-175.26	1.36	
3476.00	22.950	336.610	3390.78	-64.55	547.96	-200.40	3.25	
3664.00	24.410	336.620	3562.95	-77.20	617.26	-230.37	0.78	
3853.00	20.400	338.330	3737.65	-88.29	683.75	-258.04	2.15	
4041.00	17.300	337.790	3915.54	-96.93	740.09	-280.72	1.65	
4228.00	15.760	336.740	4094.81	-105.23	789.17	-301.26	0.84	
4417.00	16.160	337.910	4276.52	-113.30	837.12	-321.28	0.27	
4511.00	16.920	344.260	4366.64	-115.68	862.41	-329.91	2.08	
4605.00	18.540	346.330	4456.17	-116.14	890.10	-337.16	1.85	
4699.00	17.240	346.550	4545.63	-116.05	918.17	-343.93	1.38	
4793.00	16.140	345.920	4635.67	-116.06	944.39	-350.35	1.19	
4887.00	15.100	338.170	4726.20	-117.86	968.43	-358.08	2.48	
4981.00	13.160	336.670	4817.36	-121.37	989.62	-366.87	2.10	
5075.00	11.460	334.350	4909.19	-125.08	1007.87	-375.15	1.88	
5169.00	9.820	331.170	5001.57	-129.09	1023.31	-383.06	1.85	
5263.00	8.730	327.930	5094.34	-133.43	1036.38	-390.71	1.29	
5356.00	5.410	324.340	5186.62	-137.28	1045.92	-397.02	3.60	
5450.00	4.760	324.650	5280.25	-140.37	1052.70	-401.86	0.69	
5544.00	2.840	341.290	5374.04	-142.01	1058.09	-404.86	2.33	
5638.00	0.650	10.900	5468.00	-141.99	1060.82	-405.51	2.44	
5732.00	3.660	86.380	5561.93	-138.82	1061.53	-402.41	3.78	
5827.00	16.810	98.950	5655.22	-123.09	1059.58	-385.74	13.96	
5921.00	25.800	93.490	5742.71	-90.94	1056.21	-351.82	9.78	
6016.00	30.880	91.210	5826.30	-47.61	1054.44	-306.78	5.47	
6110.00	42.730	89.350	5901.43	6.96	1054.29	-250.58	12.66	
6204.00	53.100	87.300	5964.35	75.10	1056.43	-180.95	11.15	
6298.00	65.110	88.100	6012.53	154.01	1059.62	-100.50	12.80	
6391.00	74.180	89.680	6044.85	238.99	1061.28	-13.42	9.88	
6484.00	84.570	90.300	6061.97	327.66	1061.28	77.86	11.19	
6539.00†	87.425	89.814	6065.81	380.94	1061.23	132.72	5.26	7" CASING (2311'FSL & 546'FWL, SEC.28)



Actual Wellpath Report

PRONGHORN C13-W43-28HNB AWP

Page 3 of 5



REFERENCE WELLPATH IDENTIFICATION			
Operator	BONANZA CREEK OIL COMPANY	Slot	SLOT#07 PRONGHORN C13-W43-28HNB (1250'FSL & 410'FWL, SEC.28)
Area	COLORADO	Well	PRONGHORN C13-W43-28HNB
Field	WELD COUNTY	Wellbore	PRONGHORN C13-W43-28HNB AWB
Facility	SEC.28-T5N-R61W		

WELLPATH DATA (88 stations) † = interpolated/extrapolated station								
MD [ft]	Inclination [°]	Azimuth [°]	TVD [ft]	Vert Sect [ft]	North [ft]	East [ft]	DLS [°/100ft]	Comments
6603.00†	90.747	89.252	6066.83	443.21	1061.75	196.70	5.26	TOP (2311'FSL & 614'FWL, SEC.28)
6610.00	91.110	89.190	6066.72	450.04	1061.85	203.70	5.26	
6702.00	91.880	89.350	6064.32	539.64	1063.02	295.66	0.85	
6794.00	90.770	90.220	6062.19	629.07	1063.36	387.64	1.53	
6886.00	91.220	90.530	6060.59	718.28	1062.76	479.62	0.59	
6979.00	91.450	91.160	6058.43	808.26	1061.39	572.58	0.72	
7071.00	89.870	91.390	6057.37	897.11	1059.34	664.55	1.74	
7162.00	90.370	91.720	6057.18	984.88	1056.87	755.52	0.66	
7254.00	91.620	91.940	6055.58	1073.49	1053.94	847.46	1.38	
7438.00	90.220	88.230	6052.62	1252.11	1053.67	1031.39	2.15	
7615.00	89.970	87.750	6052.33	1425.41	1059.87	1208.28	0.31	
7784.00	89.910	88.390	6052.51	1590.83	1065.56	1377.19	0.38	
7869.00	89.660	88.670	6052.83	1673.89	1067.75	1462.16	0.44	
7954.00	90.430	89.000	6052.76	1756.85	1069.47	1547.14	0.99	
8038.00	90.650	89.030	6051.97	1838.78	1070.92	1631.12	0.26	
8208.00	88.530	89.710	6053.18	2004.33	1072.79	1801.10	1.31	
8378.00	89.970	90.220	6055.41	2169.48	1072.89	1971.08	0.90	
8462.00	91.050	90.740	6054.66	2250.90	1072.19	2055.07	1.43	
8549.00	90.530	90.280	6053.46	2335.22	1071.41	2142.06	0.80	
8634.00	89.660	90.330	6053.32	2417.67	1070.96	2227.06	1.03	
8805.00	91.740	91.370	6051.23	2583.14	1068.42	2398.01	1.36	
8890.00	90.810	90.630	6049.34	2665.32	1066.94	2482.98	1.40	
8975.00	90.000	89.660	6048.74	2747.83	1066.73	2567.97	1.49	
9059.00	91.170	89.660	6047.88	2829.54	1067.22	2651.97	1.39	
9144.00	90.500	88.680	6046.64	2912.38	1068.46	2736.95	1.40	
9228.00	89.230	89.130	6046.84	2994.35	1070.06	2820.93	1.60	
9313.00	89.940	89.360	6047.46	3077.17	1071.18	2905.92	0.88	
9400.00	90.740	89.840	6046.94	3161.82	1071.79	2992.92	1.07	
9485.00	89.810	89.880	6046.53	3244.44	1072.00	3077.91	1.10	
9570.00	90.440	89.660	6046.35	3327.08	1072.34	3162.91	0.79	
9655.00	89.500	90.670	6046.39	3409.59	1072.09	3247.91	1.62	
9741.00	90.280	90.880	6046.56	3492.85	1070.93	3333.90	0.94	
9828.00	89.910	89.440	6046.41	3577.30	1070.69	3420.90	1.71	
9913.00	90.340	89.380	6046.23	3660.07	1071.56	3505.89	0.51	
9998.00	91.300	89.510	6045.01	3742.82	1072.38	3590.88	1.14	
10082.00	90.280	88.890	6043.85	3824.68	1073.56	3674.86	1.42	
10169.00	89.160	89.610	6044.28	3909.45	1074.70	3761.85	1.53	
10256.00	90.590	90.180	6044.47	3994.00	1074.86	3848.85	1.77	
10426.00	89.200	89.840	6044.78	4159.12	1074.83	4018.84	0.84	
10596.00	91.520	91.000	6043.71	4323.94	1073.58	4188.82	1.53	
10681.00	91.260	90.500	6041.65	4406.22	1072.47	4273.79	0.66	
10767.00	91.000	90.650	6039.95	4489.53	1071.60	4359.77	0.35	LAST BHI MWD SURVEY
10829.00	91.000	90.650	6038.87	4549.58	1070.90	4421.75	0.00	PROJECTION TO BIT (2297'FSL & 477'FWL, SEC.28)



Actual Wellpath Report

PRONGHORN C13-W43-28HNB AWP

Page 4 of 5



REFERENCE WELLPATH IDENTIFICATION			
Operator	BONANZA CREEK OIL COMPANY	Slot	SLOT#07 PRONGHORN C13-W43-28HNB (1250'FSL & 410'FWL, SEC.28)
Area	COLORADO	Well	PRONGHORN C13-W43-28HNB
Field	WELD COUNTY	Wellbore	PRONGHORN C13-W43-28HNB AWB
Facility	SEC.28-T5N-R61W		

HOLE & CASING SECTIONS									
- Ref Wellbore: PRONGHORN C13-W43-28HNB AWB					Ref Wellpath: PRONGHORN C13-W43-28HNB AWP				
String/Diameter	Start MD [ft]	End MD [ft]	Interval [ft]	Start TVD [ft]	End TVD [ft]	Start N/S [ft]	Start E/W [ft]	End N/S [ft]	End E/W [ft]
9.625in Casing Surface	17.20	776.00	758.80	17.20	775.99	0.00	0.00	1.95	1.47
8.75in Open Hole	776.00	6539.00	5763.00	775.99	6065.81	1.95	1.47	1061.23	132.72
7in Casing Intermediate	17.20	6539.00	6521.80	17.20	6065.81	0.00	0.00	1061.23	132.72
6.125in Open Hole	6539.00	10829.00	4290.00	6065.81	6038.87	1061.23	132.72	1070.90	4421.75

TARGETS								
Name	TVD [ft]	North [ft]	East [ft]	Grid East [US ft]	Grid North [US ft]	Latitude	Longitude	Shape
SEC.28-T05N-R61W	2.00	0.00	-61.30	3355997.14	1379471.29	40°22'04.836"N	104°13'20.424"W	polygon
PRONGHORN C13-W43-28HNB BHL ON PLAT (2310'FSL & 470'FEL, SEC.28)	6050.20	1082.40	4427.61	3360469.80	1380618.21	40°22'15.528"N	104°12'22.428"W	point
PRONGHORN C13-W43-28HNB ENTRY POINT	6050.20	1059.78	117.03	3356160.17	1380533.48	40°22'15.308"N	104°13'18.120"W	point
PRONGHORN C13-W43-28HNB BHL ON PLAT REV-1 (2310'FSL & 470'FEL, SEC.28)	6074.00	1082.40	4427.61	3360469.80	1380618.21	40°22'15.528"N	104°12'22.428"W	point
PRONGHORN C13-W43-28HNB ENTRY POINT REV-1	6074.00	1059.74	117.03	3356160.17	1380533.44	40°22'15.308"N	104°13'18.120"W	point
SEC.28-T05N-R61W (460' SETBACK)	6147.00	0.00	-61.30	3355997.14	1379471.29	40°22'04.836"N	104°13'20.424"W	polygon

WELLPATH COMPOSITION - Ref Wellbore: PRONGHORN C13-W43-28HNB AWB					Ref Wellpath: PRONGHORN C13-W43-28HNB AWP	
Start MD [ft]	End MD [ft]	Positional Uncertainty Model	Log Name/Comment		Wellbore	
17.20	6484.00	NaviTrak (Standard)	BHI MWD/NAVITRAK (STD) 8.75" HOLE <839-6484>		PRONGHORN C13-W43-28HNB AWB	
6484.00	10767.00	NaviTrak (Standard)	BHI MWD/NAVITRAK (STD) 6.125" HOLE <6610-10767>		PRONGHORN C13-W43-28HNB AWB	
10767.00	10829.00	Blind Drilling (std)	Projection to bit		PRONGHORN C13-W43-28HNB AWB	



Actual Wellpath Report

PRONGHORN C13-W43-28HNB AWP

Page 5 of 5



REFERENCE WELLPATH IDENTIFICATION			
Operator	BONANZA CREEK OIL COMPANY	Slot	SLOT#07 PRONGHORN C13-W43-28HNB (1250'FSL & 410'FWL, SEC.28)
Area	COLORADO	Well	PRONGHORN C13-W43-28HNB
Field	WELD COUNTY	Wellbore	PRONGHORN C13-W43-28HNB AWB
Facility	SEC.28-T5N-R61W		

WELLPATH COMMENTS				
MD [ft]	Inclination [°]	Azimuth [°]	TVD [ft]	Comment
839.00	0.400	36.950	838.99	FIRST BHI MWD SURVEY
6539.00	87.425	89.814	6065.81	7" CASING (2311'FSL & 546'FWL, SEC.28)
6603.00	90.747	89.252	6066.83	TOP (2311'FSL & 614'FWL, SEC.28)
10767.00	91.000	90.650	6039.95	LAST BHI MWD SURVEY
10829.00	91.000	90.650	6038.87	PROJECTION TO BIT (2297'FSL & 477'FEL, SEC.28)