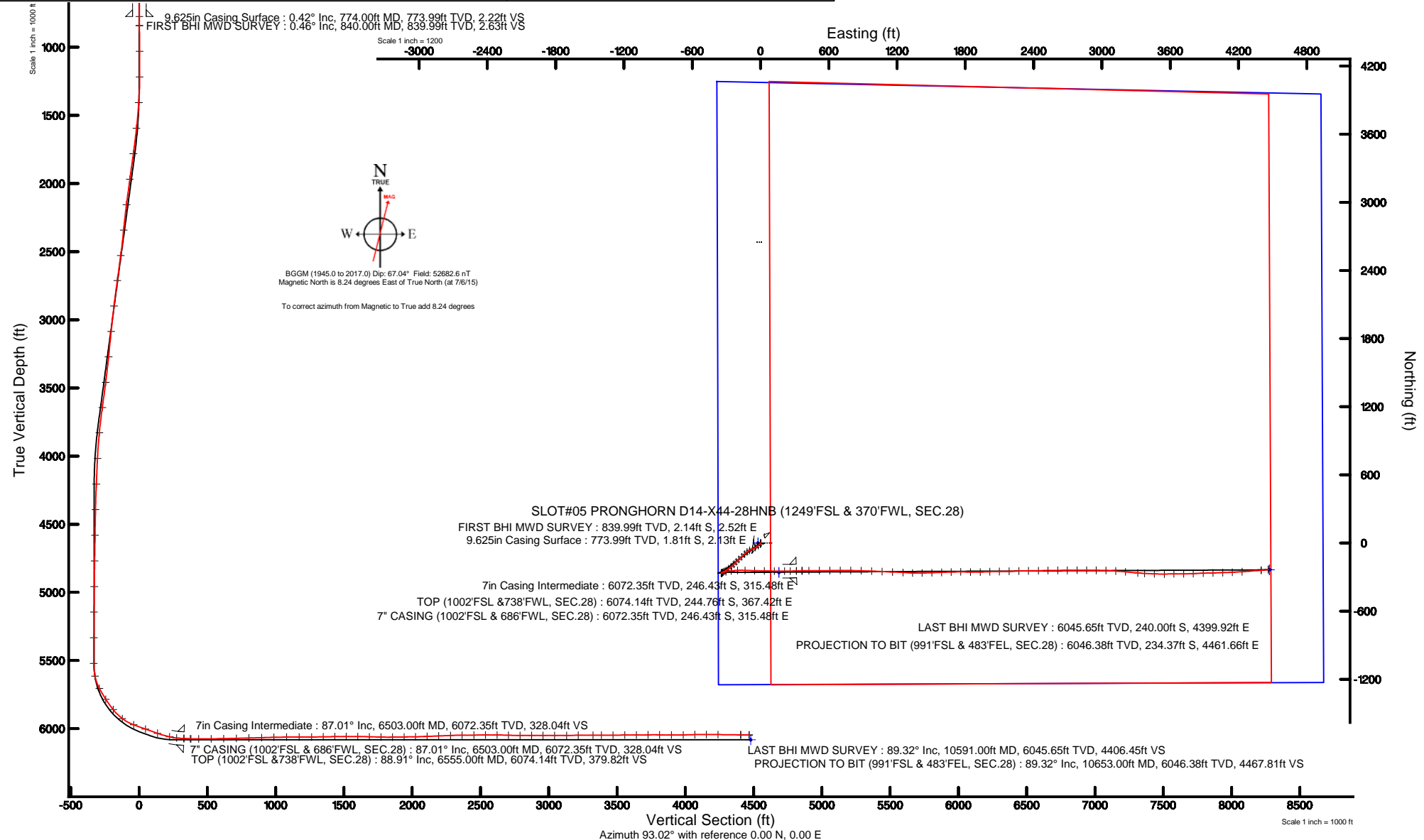


# BONANZA CREEK OIL COMPANY

Location: COLORADO Slot: SLOT#05 PRONGHORN D14-X44-28HNB (1249'FSL & 370'FWL, SEC.28)  
 Field: WELD COUNTY Well: PRONGHORN D14-X44-28HNB  
 Facility: SEC.28-T5N-R61W Wellbore: PRONGHORN D14-X44-28HNB PWB



Plot reference wellpath is PRONGHORN D14-X44-28HNB PWP (REV-B.0)	
True vertical depths are referenced to XTREME 20 (17.2'KB) (RKB)	Grid System: NAD83 / Lambert Colorado SP, Northern Zone (501), US feet
Measured depths are referenced to XTREME 20 (17.2'KB) (RKB)	North Reference: True north
XTREME 20 (17.2'KB) (RKB) to Mean Sea Level: 4612.2 feet	Scale: True distance
Mean Sea Level to Mud line (At Slot: SLOT#05 PRONGHORN D14-X44-28HNB (1249'FSL & 370'FWL, SEC.28)): 0 feet	Depths are in feet
Coordinates are in feet referenced to Slot	Created by: cookdarn on 10/30/15





# Actual Wellpath Report

PRONGHORN D14-X44-28HNB AWP

Page 1 of 7



## REFERENCE WELLPATH IDENTIFICATION

Operator	<b>BONANZA CREEK OIL COMPANY</b>	Slot	<b>SLOT#05 PRONGHORN D14-X44-28HNB (1249'FSL &amp; 370'FWL, SEC.28)</b>
Area	<b>COLORADO</b>	Well	<b>PRONGHORN D14-X44-28HNB</b>
Field	<b>WELD COUNTY</b>	Wellbore	<b>PRONGHORN D14-X44-28HNB AWB</b>
Facility	<b>SEC.28-T5N-R61W</b>		

## REPORT SETUP INFORMATION

Projection System	<b>NAD83 / Lambert Colorado SP, Northern Zone (501), US feet</b>	Software System	<b>WellArchitect® 4.1.1</b>
North Reference	<b>True</b>	User	<b>Cookdanm</b>
Scale	<b>0.999959</b>	Report Generated	<b>10/30/15 at 10:40:39 AM</b>
Convergence at slot	<b>0.83° East</b>	Database/Source file	<b>WA_DEN_Denver_Defn/PRONGHORN_D14-X44-28HNB_AWB.xml</b>

## WELLPATH LOCATION

	Local coordinates		Grid coordinates		Geographic coordinates	
	North[ft]	East[ft]	Easting[US ft]	Northing[US ft]	Latitude	Longitude
Slot Location	-2648.54	-11.15	3356019.43	1379471.61	<b>40°22'04.836"N</b>	<b>104°13'20.136"W</b>
Facility Reference Pt			3355992.41	1382119.92	<b>40°22'31.008"N</b>	<b>104°13'19.992"W</b>
Field Reference Pt			3335925.10	1457282.25	<b>40°34'56.460"N</b>	<b>104°17'26.016"W</b>

## WELLPATH DATUM

Calculation method	<b>Minimum curvature</b>	XTREME 20 (17.2'KB) (RKB) to Facility Vertical Datum	<b>4612.20ft</b>
Horizontal Reference Pt	<b>Slot</b>	XTREME 20 (17.2'KB) (RKB) to Mean Sea Level	<b>4612.20ft</b>
Vertical Reference Pt	<b>XTREME 20 (17.2'KB) (RKB)</b>	XTREME 20 (17.2'KB) (RKB) to Mud Line at Slot (SLOT#05 PRONGHORN D14-X44-28HNB (1249'FSL & 370'FWL, SEC.28))	<b>4612.20ft</b>
MD Reference Pt	<b>XTREME 20 (17.2'KB) (RKB)</b>	Section Origin	<b>N 0.00, E 0.00 ft</b>
Field Vertical Reference	<b>Mean Sea Level</b>	Section Azimuth	<b>93.02°</b>



# Actual Wellpath Report

PRONGHORN D14-X44-28HNB AWP

Page 2 of 7



## REFERENCE WELLPATH IDENTIFICATION

Operator	BONANZA CREEK OIL COMPANY	Slot	SLOT#05 PRONGHORN D14-X44-28HNB (1249'FSL & 370'FWL, SEC.28)
Area	COLORADO	Well	PRONGHORN D14-X44-28HNB
Field	WELD COUNTY	Wellbore	PRONGHORN D14-X44-28HNB AWB
Facility	SEC.28-T5N-R61W		

## WELLPATH DATA (88 stations) † = interpolated/extrapolated station

MD [ft]	Inclination [°]	Azimuth [°]	TVD [ft]	Vert Sect [ft]	North [ft]	East [ft]	DLS [°/100ft]	Comments
0.00†	0.000	130.300	0.00	0.00	0.00	0.00	0.00	
17.20	0.000	130.300	17.20	0.00	0.00	0.00	0.00	
840.00	0.460	130.300	839.99	2.63	-2.14	2.52	0.06	FIRST BHI MWD SURVEY
1029.00	0.360	131.660	1028.99	3.70	-3.02	3.54	0.05	
1218.00	0.440	167.040	1217.98	4.36	-4.12	4.15	0.13	
1407.00	5.000	237.370	1406.73	-2.14	-9.27	-2.63	2.58	
1596.00	8.720	227.990	1594.35	-18.96	-23.31	-20.22	2.05	
1785.00	8.980	242.770	1781.13	-41.83	-39.65	-43.98	1.21	
1974.00	8.820	245.040	1967.85	-67.37	-52.51	-70.23	0.20	
2163.00	8.340	243.610	2154.74	-92.10	-64.72	-95.65	0.28	
2351.00	7.580	230.290	2340.94	-113.09	-78.70	-117.40	1.06	
2540.00	10.690	228.200	2527.52	-134.68	-98.36	-140.07	1.65	
2728.00	10.900	227.890	2712.19	-159.59	-121.90	-166.25	0.12	
2918.00	9.930	226.770	2899.06	-183.59	-145.17	-191.52	0.52	
3107.00	8.680	225.770	3085.57	-204.54	-166.28	-213.61	0.67	
3295.00	8.850	222.770	3271.38	-223.42	-186.79	-233.59	0.26	
3484.00	9.740	231.370	3457.90	-244.66	-207.44	-255.96	0.87	
3672.00	9.970	234.100	3643.13	-269.20	-226.91	-281.56	0.28	
3860.00	6.580	240.900	3829.15	-290.99	-241.70	-304.17	1.87	
4048.00	3.430	235.740	4016.41	-304.59	-250.11	-318.23	1.69	
4237.00	2.950	239.960	4205.11	-313.17	-255.72	-327.11	0.28	
4425.00	1.750	224.390	4392.96	-319.12	-260.20	-333.31	0.72	
4613.00	1.170	235.360	4580.89	-322.54	-263.34	-336.90	0.34	
4801.00	1.100	240.970	4768.86	-325.59	-265.31	-340.05	0.07	
4989.00	0.760	255.420	4956.83	-328.30	-266.50	-342.84	0.22	
5177.00	0.490	280.060	5144.82	-330.29	-266.67	-344.84	0.20	
5365.00	0.740	332.850	5332.81	-331.70	-265.45	-346.18	0.31	
5554.00	1.040	10.170	5521.79	-332.10	-262.67	-346.44	0.34	
5648.00	12.510	76.400	5615.01	-322.20	-259.43	-336.35	12.90	
5743.00	27.410	79.050	5704.06	-290.94	-252.82	-304.70	15.71	



# Actual Wellpath Report

PRONGHORN D14-X44-28HNB AWP

Page 3 of 7



## REFERENCE WELLPATH IDENTIFICATION

Operator	<b>BONANZA CREEK OIL COMPANY</b>	Slot	<b>SLOT#05 PRONGHORN D14-X44-28HNB (1249'FSL &amp; 370'FWL, SEC.28)</b>
Area	<b>COLORADO</b>	Well	<b>PRONGHORN D14-X44-28HNB</b>
Field	<b>WELD COUNTY</b>	Wellbore	<b>PRONGHORN D14-X44-28HNB AWB</b>
Facility	<b>SEC.28-T5N-R61W</b>		

## WELLPATH DATA (88 stations) † = interpolated/extrapolated station

MD [ft]	Inclination [°]	Azimuth [°]	TVD [ft]	Vert Sect [ft]	North [ft]	East [ft]	DLS [°/100ft]	Comments
5837.00	34.270	83.530	5784.73	-243.78	-245.72	-257.10	7.69	
5930.00	38.070	87.130	5859.80	-189.41	-241.33	-202.42	4.68	
6024.00	52.580	92.140	5925.73	-122.88	-241.27	-135.80	15.88	
6119.00	69.570	91.420	5971.52	-40.06	-243.80	-52.99	17.90	
6211.00	70.400	91.080	6003.00	46.34	-245.69	33.43	0.97	
6305.00	71.200	91.150	6033.92	135.07	-247.41	122.18	0.85	
6398.00	76.080	89.660	6060.11	224.18	-248.03	211.39	5.47	
6449.00	84.880	89.190	6068.53	274.32	-247.52	261.63	17.28	
6503.00†	87.008	88.488	6072.35	328.04	-246.43	315.48	4.15	7" CASING (1002'FSL & 686'FWL, SEC.28)
6550.00	88.860	87.880	6074.05	374.84	-244.94	362.43	4.15	
6555.00†	88.912	88.012	6074.14	379.82	-244.76	367.42	2.85	TOP (1002'FSL & 738'FWL, SEC.28)
6612.00	89.510	89.520	6074.93	436.66	-243.54	424.40	2.85	
6704.00	91.020	90.020	6074.50	528.50	-243.17	516.40	1.73	
6796.00	91.330	89.690	6072.62	620.34	-242.93	608.38	0.49	
6888.00	90.770	89.100	6070.93	712.14	-241.96	700.36	0.88	
6981.00	91.940	91.380	6068.73	805.00	-242.35	793.32	2.75	
7073.00	91.660	91.240	6065.84	896.91	-244.45	885.25	0.34	
7164.00	91.450	92.240	6063.37	987.86	-247.22	976.17	1.12	
7256.00	90.680	92.810	6061.66	1079.84	-251.27	1068.07	1.04	
7348.00	90.060	92.320	6061.07	1171.83	-255.39	1159.97	0.86	
7440.00	90.190	93.360	6060.87	1263.83	-259.94	1251.86	1.14	
7525.00	91.260	92.100	6059.79	1348.82	-263.99	1336.75	1.94	
7609.00	90.710	88.380	6058.35	1432.69	-264.34	1420.72	4.48	
7694.00	90.090	88.010	6057.75	1517.39	-261.67	1505.68	0.85	
7779.00	89.750	88.110	6057.87	1602.07	-258.79	1590.63	0.42	
7863.00	88.370	87.950	6059.25	1685.74	-255.90	1674.57	1.65	
7948.00	88.620	90.290	6061.48	1770.50	-254.60	1759.52	2.77	
8033.00	90.550	90.970	6062.10	1855.42	-255.53	1844.51	2.41	
8119.00	91.270	88.790	6060.73	1941.28	-255.35	1930.49	2.67	
8203.00	90.800	88.040	6059.21	2024.99	-253.03	2014.45	1.05	



# Actual Wellpath Report

PRONGHORN D14-X44-28HNB AWP

Page 4 of 7



## REFERENCE WELLPATH IDENTIFICATION

Operator	<b>BONANZA CREEK OIL COMPANY</b>	Slot	<b>SLOT#05 PRONGHORN D14-X44-28HNB (1249'FSL &amp; 370'FWL, SEC.28)</b>
Area	<b>COLORADO</b>	Well	<b>PRONGHORN D14-X44-28HNB</b>
Field	<b>WELD COUNTY</b>	Wellbore	<b>PRONGHORN D14-X44-28HNB AWB</b>
Facility	<b>SEC.28-T5N-R61W</b>		

## WELLPATH DATA (88 stations)

MD [ft]	Inclination [°]	Azimuth [°]	TVD [ft]	Vert Sect [ft]	North [ft]	East [ft]	DLS [°/100ft]	Comments
8288.00	92.430	89.080	6056.82	2109.69	-250.89	2099.38	2.27	
8373.00	92.460	88.540	6053.19	2194.39	-249.13	2184.29	0.64	
8460.00	92.320	88.380	6049.57	2281.04	-246.79	2271.18	0.24	
8544.00	90.340	89.150	6047.62	2364.78	-244.98	2355.13	2.53	
8631.00	90.280	89.070	6047.14	2451.57	-243.63	2442.12	0.11	
8716.00	90.800	88.660	6046.34	2536.34	-241.95	2527.10	0.78	
8801.00	89.190	90.000	6046.35	2621.16	-240.95	2612.09	2.46	
8885.00	88.300	89.590	6048.19	2705.01	-240.65	2696.07	1.17	
8970.00	89.140	89.760	6050.09	2789.84	-240.17	2781.04	1.01	
9055.00	90.840	90.610	6050.10	2874.73	-240.45	2866.04	2.24	
9139.00	89.450	89.990	6049.89	2958.64	-240.89	2950.04	1.81	
9224.00	90.550	91.560	6049.89	3043.57	-242.04	3035.02	2.26	
9311.00	90.430	94.730	6049.15	3130.55	-246.81	3121.88	3.65	
9396.00	90.190	95.230	6048.69	3215.50	-254.19	3206.56	0.65	
9505.00	90.280	94.440	6048.24	3324.44	-263.37	3315.17	0.73	
9566.00	90.310	93.820	6047.93	3385.43	-267.77	3376.01	1.02	
9651.00	90.250	91.960	6047.51	3470.43	-272.05	3460.89	2.19	
9738.00	90.680	89.660	6046.81	3557.35	-273.28	3547.88	2.69	
9823.00	90.000	88.710	6046.30	3642.16	-272.07	3632.87	1.37	
9908.00	90.920	90.050	6045.62	3726.98	-271.15	3717.85	1.91	
9993.00	89.250	87.550	6045.49	3811.74	-269.37	3802.83	3.54	
10080.00	89.410	87.970	6046.51	3898.37	-265.97	3889.75	0.52	
10167.00	91.600	88.670	6045.74	3985.07	-263.42	3976.71	2.64	
10252.00	91.080	87.960	6043.76	4069.76	-260.92	4061.65	1.04	
10337.00	90.250	87.670	6042.77	4154.40	-257.68	4146.58	1.03	
10422.00	89.070	86.260	6043.27	4238.92	-253.18	4231.45	2.16	
10591.00	89.320	84.790	6045.65	4406.45	-240.00	4399.92	0.88	LAST BHI MWD SURVEY
10653.00	89.320	84.790	6046.38	4467.81	-234.37	4461.66	0.00	PROJECTION TO BIT (991'FSL & 483'FEL, SEC.28)



# Actual Wellpath Report

PRONGHORN D14-X44-28HNB AWP

Page 5 of 7



## REFERENCE WELLPATH IDENTIFICATION

Operator	BONANZA CREEK OIL COMPANY	Slot	SLOT#05 PRONGHORN D14-X44-28HNB (1249'FSL & 370'FWL, SEC.28)
Area	COLORADO	Well	PRONGHORN D14-X44-28HNB
Field	WELD COUNTY	Wellbore	PRONGHORN D14-X44-28HNB AWB
Facility	SEC.28-T5N-R61W		

## HOLE & CASING SECTIONS -

Ref Wellbore: PRONGHORN D14-X44-28HNB AWB Ref Wellpath: PRONGHORN D14-X44-28HNB AWP

String/Diameter	Start MD [ft]	End MD [ft]	Interval [ft]	Start TVD [ft]	End TVD [ft]	Start N/S [ft]	Start E/W [ft]	End N/S [ft]	End E/W [ft]
9.625in Casing Surface	17.20	774.00	756.80	17.20	773.99	0.00	0.00	-1.81	2.13
8.75in Open Hole	774.00	6503.00	5729.00	773.99	6072.35	-1.81	2.13	-246.43	315.48
7in Casing Intermediate	17.20	6503.00	6485.80	17.20	6072.35	0.00	0.00	-246.43	315.48
6.125in Open Hole	6503.00	10653.00	4150.00	6072.35	6046.38	-246.43	315.48	-234.37	4461.66

## TARGETS

Name	TVD [ft]	North [ft]	East [ft]	Grid East [US ft]	Grid North [US ft]	Latitude	Longitude	Shape
SEC.28-T05N-R61W	0.00	0.00	-22.29	3355997.14	1379471.29	40°22'04.836"N	104°13'20.424"W	polygon
PRONGHORN D14-X44-28HNB BHL ON PLAT (990'FSL & 470'FEL, SEC.28)	6062.20	-236.40	4472.44	3360494.61	1379299.69	40°22'02.496"N	104°12'22.356"W	point
PRONGHORN D14-X44-28HNB ENTRY POINT	6062.20	-258.66	161.62	3356184.75	1379215.32	40°22'02.280"N	104°13'18.048"W	point
PRONGHORN D14-X44-28HNB BHL ON PLAT REV-1 (990'FSL & 470'FEL, SEC.28)	6082.00	-236.40	4472.44	3360494.61	1379299.69	40°22'02.496"N	104°12'22.356"W	point
PRONGHORN D14-X44-28HNB ENTRY POINT REV-1	6082.00	-258.66	161.62	3356184.75	1379215.32	40°22'02.280"N	104°13'18.048"W	point
SEC.28-T05N-R61W (460' SETBACK)	6145.00	0.00	-22.29	3355997.14	1379471.29	40°22'04.836"N	104°13'20.424"W	polygon



# Actual Wellpath Report

PRONGHORN D14-X44-28HNB AWP

Page 6 of 7



## REFERENCE WELLPATH IDENTIFICATION

Operator	BONANZA CREEK OIL COMPANY	Slot	SLOT#05 PRONGHORN D14-X44-28HNB (1249'FSL & 370'FWL, SEC.28)
Area	COLORADO	Well	PRONGHORN D14-X44-28HNB
Field	WELD COUNTY	Wellbore	PRONGHORN D14-X44-28HNB AWB
Facility	SEC.28-T5N-R61W		

## WELLPATH COMPOSITION -

Ref Wellbore: PRONGHORN D14-X44-28HNB AWB      Ref Wellpath: PRONGHORN D14-X44-28HNB AWP

Start MD [ft]	End MD [ft]	Positional Uncertainty Model	Log Name/Comment	Wellbore
17.20	6449.00	NaviTrak (Standard)	BHI MWD/NAVITRAK (STD) 8.75" HOLE <840-6449>	PRONGHORN D14-X44-28HNB AWB
6449.00	10591.00	NaviTrak (Standard)	BHI MWD/NAVITRAK (STD) 6.125" HOLE <6550-10591>	PRONGHORN D14-X44-28HNB AWB
10591.00	10653.00	Blind Drilling (std)	Projection to bit	PRONGHORN D14-X44-28HNB AWB



# Actual Wellpath Report

PRONGHORN D14-X44-28HNB AWP

Page 7 of 7



## REFERENCE WELLPATH IDENTIFICATION

Operator	<b>BONANZA CREEK OIL COMPANY</b>	Slot	<b>SLOT#05 PRONGHORN D14-X44-28HNB (1249'FSL &amp; 370'FWL, SEC.28)</b>
Area	<b>COLORADO</b>	Well	<b>PRONGHORN D14-X44-28HNB</b>
Field	<b>WELD COUNTY</b>	Wellbore	<b>PRONGHORN D14-X44-28HNB AWB</b>
Facility	<b>SEC.28-T5N-R61W</b>		

## WELLPATH COMMENTS

MD [ft]	Inclination [°]	Azimuth [°]	TVD [ft]	Comment
840.00	0.460	130.300	839.99	FIRST BHI MWD SURVEY
6503.00	87.008	88.488	6072.35	7" CASING (1002'FSL & 686'FWL, SEC.28)
6555.00	88.912	88.012	6074.14	TOP (1002'FSL & 738'FWL, SEC.28)
10591.00	89.320	84.790	6045.65	LAST BHI MWD SURVEY
10653.00	89.320	84.790	6046.38	PROJECTION TO BIT (991'FSL & 483'FEL, SEC.28)