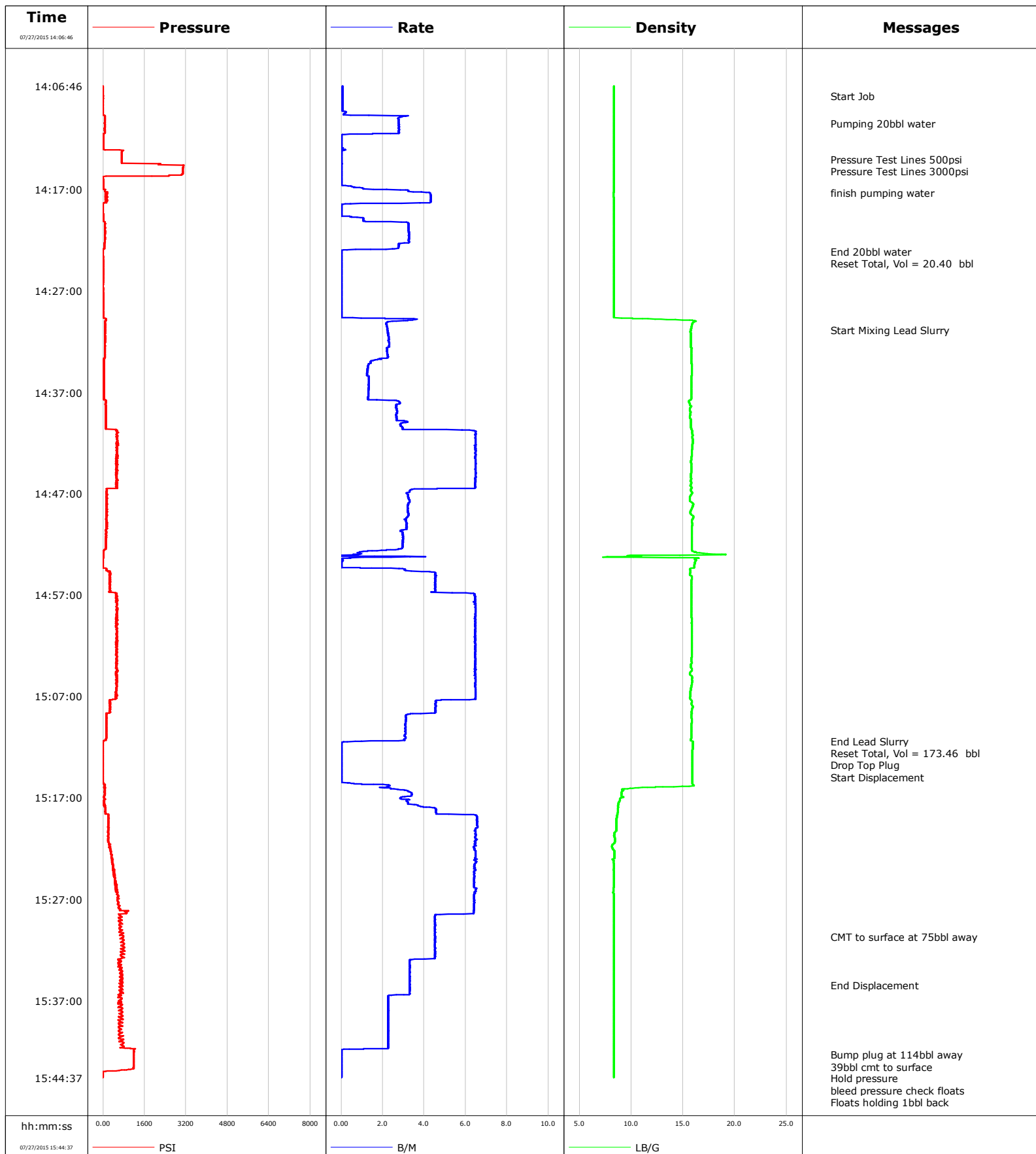


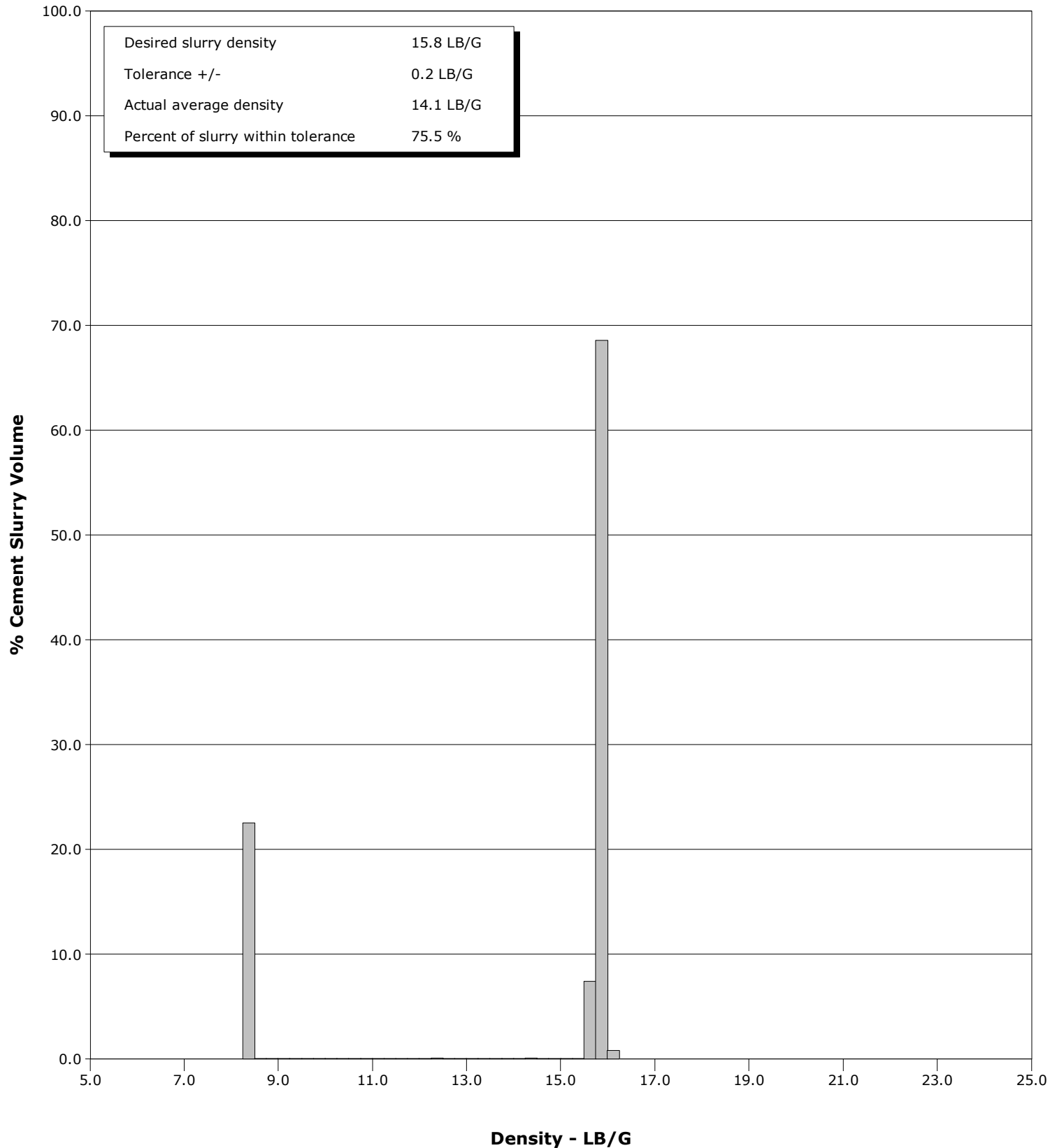
Well	Troudt	Client	Extraction
Field	DJ	SIR No.	DAXH-00279
Engineer	Chris Valerio/Charles Peavey	Job Type	Surface
Country	United States	Job Date	07-27-2015



Well Troudt
Field DJ
Engineer Chris Valerio/Charles Peavey
Country United States

Client Extraction
SIR No. DAXH-00279
Job Type Surface
Job Date 07-27-2015

Cement Slurry - 07/27/2015 14:06:46 to 07/27/2015 14:49:36



Cementing Service Report

				Customer Extraction				Job Number DAXH-00279			
Well Troudtt #4			Location (legal)			Schlumberger Location			Job Start Jul/27/2015		
Field DJ		Formation Name/Type Shale		Deviation deg		Bit Size 13.5 in		Well MD 1525.0 ft		Well TVD 1525.0 ft	
County Weld		State/Province Colorado		BHP psi		BHST 99 degF		BHCT 84 degF		Pore Press. Gradient lb/gal	
Well Master 0631646505		API/UWI 05-123-41435									
Rig Name White Mountain #344		Drilled For Oil		Service Via Land		Casing/Liner					
						Depth, ft		Size, in		Weight, lb/ft	
Offshore Zone		Well Class New		Well Type Development		1525.0		9.6		36.0	
						0.0		0.0		0.0	
Drilling Fluid Type Other		Max. Density lb/gal		Plastic Viscosity cP		Tubing/Drill Pipe					
						T/D		Depth, ft		Size, in	
Service Line Cementing		Job Type Surface									
Max. Allowed Tub. Press 2500 psi		Max. Allowed Ann. Press psi		WH Connection Single Cement head		Perforations/Open Hole					
						Top, ft		Bottom, ft		shot/ft	
						ft		ft			
						ft		ft			
						Treat Down Casing		Displacement 114.5 bbl		Packer Type	
										Packer Depth ft	
						Tubing Vol. bbl		Casing Vol. 117.3 bbl		Annular Vol. 166.0 bbl	
										Openhole Vol. bbl	
Casing/Tubing Secured <input checked="" type="checkbox"/>		1 Hole Vol. Circulated prior to Cement <input checked="" type="checkbox"/>		Casing Tools				Squeeze Job			
Lift Pressure 755 psi				Shoe Type Float				Squeeze Type			
Pipe Rotated <input type="checkbox"/>		Pipe Reciprocated <input type="checkbox"/>		Shoe Depth 1525.0 ft				Tool Type			
No. Centralizers		Top Plugs 1		Bottom Plugs		Stage Tool Type				Tool Depth ft	
Cement Head Type Single						Stage Tool Depth ft				Tail Pipe Size in	
Job Scheduled For Jul/27/2015 13:00		Arrived on Location Jul/27/2015 13:00		Leave Location Jul/27/2015 17:00		Collar Type Float				Tail Pipe Depth ft	
						Collar Depth 1481.0 ft				Sqz. Total Vol. bbl	
Date	Time 24-hr clock	Treating Pressure PSI	Flow Rate B/M	Density LB/G	Volume BBL	Message					
07/27/2015	14:06:46	-4	0.1	8.34	0.0	Started Acquisition					
07/27/2015	14:07:46	0	0.1	8.34	0.0	Start Job					
07/27/2015	14:10:26	58	2.8	8.31	2.2	Pumping 20bbl water					
07/27/2015	14:11:46	3	0.0	8.31	5.2						
07/27/2015	14:14:00	718	0.0	8.31	5.3	Pressure Test Lines 500psi					
07/27/2015	14:14:57	3079	0.0	8.31	5.3	Pressure Test Lines 3000psi					
07/27/2015	14:16:46	5	0.6	8.31	5.3						
07/27/2015	14:17:21	186	4.3	8.30	6.7	finish pumping water					
07/27/2015	14:21:46	64	3.3	8.32	16.8						
07/27/2015	14:23:05	-3	0.0	8.32	20.3	End 20bbl water					
07/27/2015	14:23:08	-1	0.0	8.32	20.3	Reset Total, Vol = 20.40 bbl					
07/27/2015	14:26:46	0	0.0	8.32	20.3						
07/27/2015	14:30:51	73	2.2	15.75	23.1	Start Mixing Lead Slurry					
07/27/2015	14:31:46	72	2.3	15.74	25.2						
07/27/2015	14:36:46	27	1.3	15.80	33.6						
07/27/2015	14:41:46	552	6.5	15.94	49.9						
07/27/2015	14:46:46	127	3.3	15.77	81.5						
07/27/2015	14:51:46	112	3.0	15.85	97.2						
07/27/2015	14:56:46	501	5.4	15.78	110.8						
07/27/2015	15:01:46	540	6.5	15.82	143.1						
07/27/2015	15:06:46	494	6.5	15.69	175.4						

Well			Field		Job Start	Customer		Job Number
Troudt #4			DJ		Jul/27/2015	Extraction		DAXH-00279
Date	Time 24-hr clock	Treating Pressure PSI	Flow Rate B/M	Density LB/G	Volume BBL	Message		
07/27/2015	15:11:32	-3	0.0	15.93	193.7	Reset Total, Vol = 173.46 bbl		
07/27/2015	15:11:35	-3	0.0	15.94	193.7	Drop Top Plug		
07/27/2015	15:11:46	-3	0.0	15.94	193.7			
07/27/2015	15:16:46	58	3.4	9.03	196.8			
07/27/2015	15:21:46	255	6.4	8.14	224.1			
07/27/2015	15:26:46	580	6.4	8.32	256.3			
07/27/2015	15:30:44	784	4.5	8.32	277.5	CMT to surface at 75bbl away		
07/27/2015	15:31:46	810	4.5	8.32	282.2			
07/27/2015	15:35:30	720	3.3	8.32	295.9	End Displacement		
07/27/2015	15:36:46	706	2.3	8.32	299.8			
07/27/2015	15:41:46	1069	2.0	8.32	311.1			
07/27/2015	15:42:22	1178	0.0	8.32	311.2	Bump plug at 114bbl away		
07/27/2015	15:42:36	1178	0.0	8.32	311.2	39bbl cmt to surface		
07/27/2015	15:42:43	1180	0.0	8.32	311.2	Hold pressure		
07/27/2015	15:43:39	1182	0.0	8.32	311.2	bleed pressure check floats		
07/27/2015	15:44:19	-2	0.0	8.32	311.2	Floats holding 1bbl back		

Post Job Summary

Average Pump Rates, bbl/min					Volume of Fluid Injected, bbl				
Slurry 3.6	N2	Mud	Maximum Rate 6.6	Total Slurry 170.0	Mud 0.0	Spacer 0.0	N2		
Treating Pressure Summary, psi					Breakdown Fluid				
Maximum 1180	Final -1	Average 373	Bump Plug to 1178	Breakdown	Type		Volume bbl	Density lb/gal	
Avg. N2 Percent %		Designed Slurry Volume 170.0 bbl		Displacement 114.0 bbl		Mix Water Temp 74 degF		Cement Circulated to Surface? <input checked="" type="checkbox"/>	Volume 39.0 bbl
								Washed Thru Perfs <input type="checkbox"/>	To ft
Customer or Authorized Representative Terry Shaffer				Schlumberger Supervisor Chris Valerio/Charles Peavey				Circulation Lost <input type="checkbox"/>	Job Completed <input checked="" type="checkbox"/>
								-	