

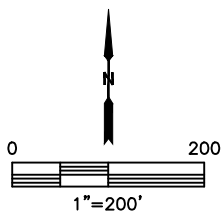
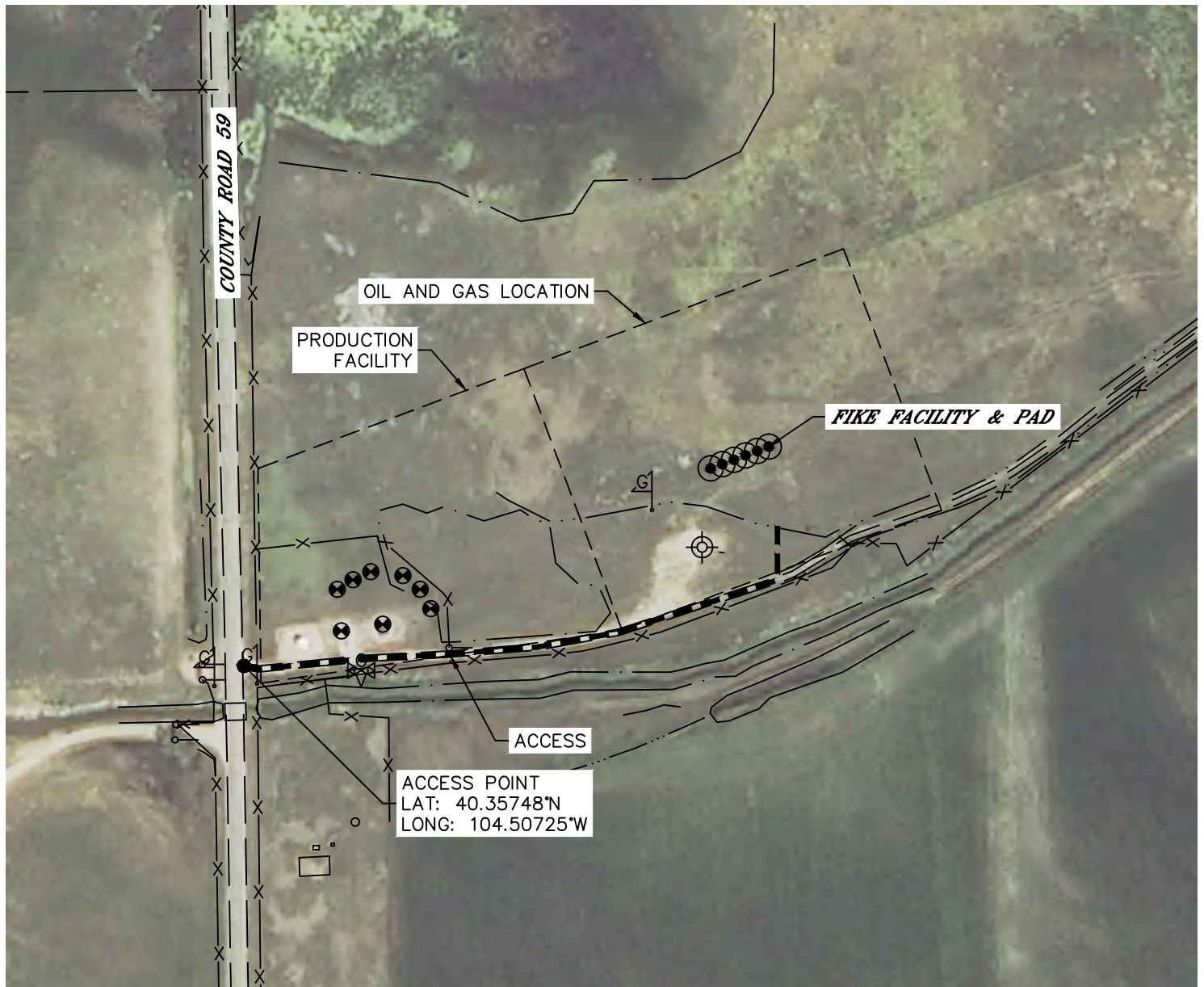


Lat40°, Inc. 6250 W. 10th Street, Unit 2, Greeley, CO 970-515-5294

ACCESS POINT MAP

FIKE FACILITY & PAD

SECTION: 36
TOWNSHIP: 5N
RANGE: 64W
6TH. P.M.
WELD COUNTY, CO





Lat40°, Inc. 6250 W. 10th Street, Unit 2, Greeley, CO 970-515-5294

ACCESS POINT PICTURES

FIKE FACILITY & PAD

SECTION: 36
TOWNSHIP: 5N
RANGE: 64W
6TH. P.M.
WELD COUNTY, CO
DATE: 8/28/2015



VIEW NORTH (COUNTY ROAD 59)



VIEW EAST



VIEW SOUTH (COUNTY ROAD 59)