



# Weatherford®

## Surface Logging Systems

Scale 1:240 (5"=100') Imperial  
Measured Depth Log

884 Implement Dr.  
Dickinson, ND 58601  
701-227-4408

2122 Melodi Ln.  
Po Box 435  
Casper, WY 82601  
307-265-2124

Well Name: WAAG 10  
API: 05-123-40359-00  
Location: Sec. 19, T7N-R65W Weld County, Colorado  
License Number: AFE: 14-171  
Spud Date: 6/10/15  
Surface Coordinates: Northing: 1448333.38' ; Easting: 3220341.16'  
Region: Wattenburg  
Drilling Completed: 8/2/2015  
Bottom Hole Coordinates: From projection to bit survey: 527.85' N, 4660.81' W from surface hole location  
Ground Elevation (ft): 4885' K.B. Elevation (ft): 4909'  
Logged Interval (ft): 4000' To: 12050' Total Depth (ft): 12050'  
Formation: Codell  
Type of Drilling Fluid: Water Based

Printed by HORIZONTAL.LOG from WellSight Systems 1-800-447-1534 [www.WellSight.com](http://www.WellSight.com)

### OPERATOR

Company: Extraction Oil & Gas  
Address: 1888 Sherman Street, Suite 200  
Denver, CO 80203

### GEOLOGIST

Name: Jennifer Anderson & Douglas Bower  
Company: Weatherford, Surface Logging Systems  
Address: 2122 Melodi Lane  
Casper, WY 82601  
307-265-2124

### Supervision:

Project Geologist: Vivian Spiess

Company Representatives: Jose Torres and Hugh McGraw

### Personel:

Contractor: Helmerich & Payne Rig 319


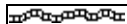


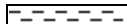
Directional Services: Phoenix Technology Services






Mud Engineering: Newpark Drilling Fluids



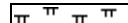


### Comments:






Hotwire Calibrated 1% Methane=100u=1000ppm.

### ROCK TYPES

 Anhy  
 Bent  
 Brec  
 Cht  
 Clyst

 Coal  
 Congl  
 Dol  
 Gyp  
 Igne

 Lmst  
 Meta  
 Mrlst  
 Salt  
 Shale

 Shcol  
 Shgy  
 Sltst  
 Ss  
 Till

## ACCESSORIES

### MINERAL

	Anhy
	Arggrn
	Arg
	Bent
	Bit
	Brecfrag
	Calc
	Carb
	Chtdk
	Chtlit
	Dol
	Feldspar
	Ferrpel
	Ferr
	Glau
	Gyp
	Hvymin
	Kaol
	Marl

	Minxl
	Nodule
	Phos
	Pyr
	Salt
	Sandy
	Silt
	Sil
	Sulphur
	Tuff

### FOSSIL

	Algae
	Amph
	Belm
	Bioclst
	Brach
	Bryozoa
	Cephal
	Coral

	Crin
	Echin
	Fish
	Foram
	Fossil
	Gastro
	Oolite
	Ostra
	Pelec
	Pellet
	Pisolite
	Plant
	Strom

### STRINGER

	Anhy
	Arg
	Bent
	Coal
	Dol

	Gyp
	Ls
	Mrst
	Sltstrg
	Ssstrg

### TEXTURE

	Boundst
	Chalky
	Cryxln
	Earthy
	Finexln
	Grainst
	Lithogr
	Microxln
	Mudst
	Packst
	Wackest

## OTHER SYMBOLS

### POROSITY

	Earthy
	Fenest
	Fracture
	Inter
	Moldic
	Organic
	Pinpoint
	Vuggy

sml logo 3

### OIL SHOW

	Even
	Spotted
	Ques
	Dead

### SORTING

	Well
	Moderate
	Poor

### ROUNDING

	Rounded
	Subrnd
	Subang

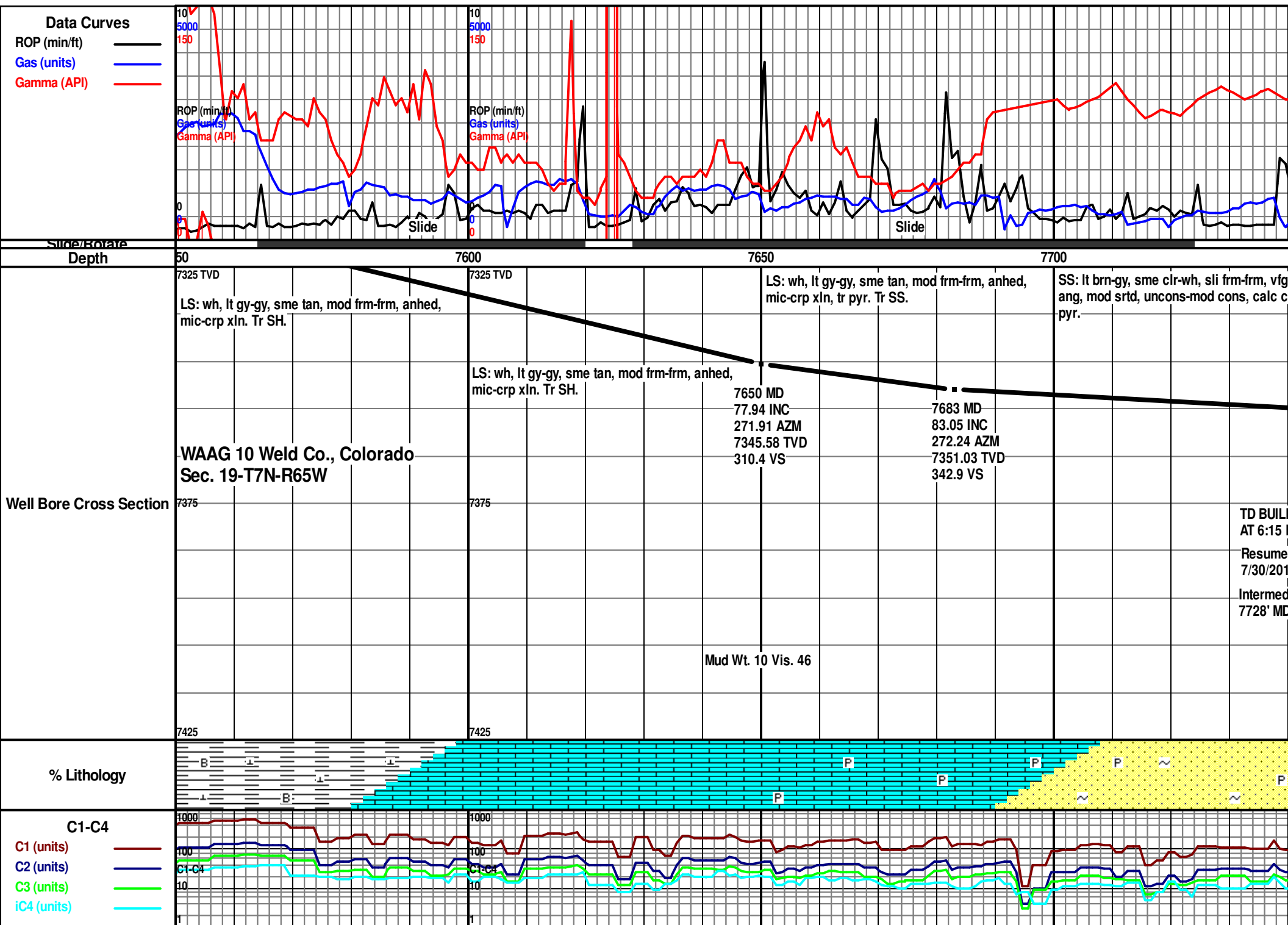
Angular

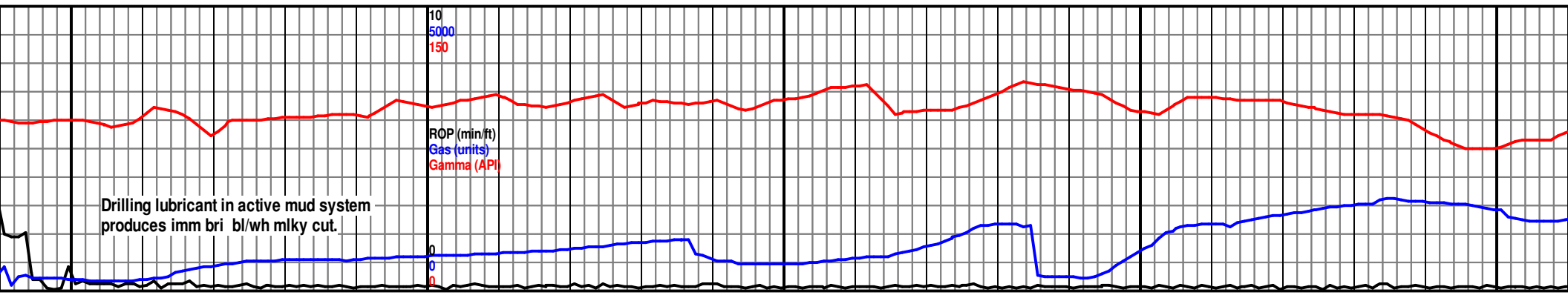
### INTERVAL

	Core
	Dst

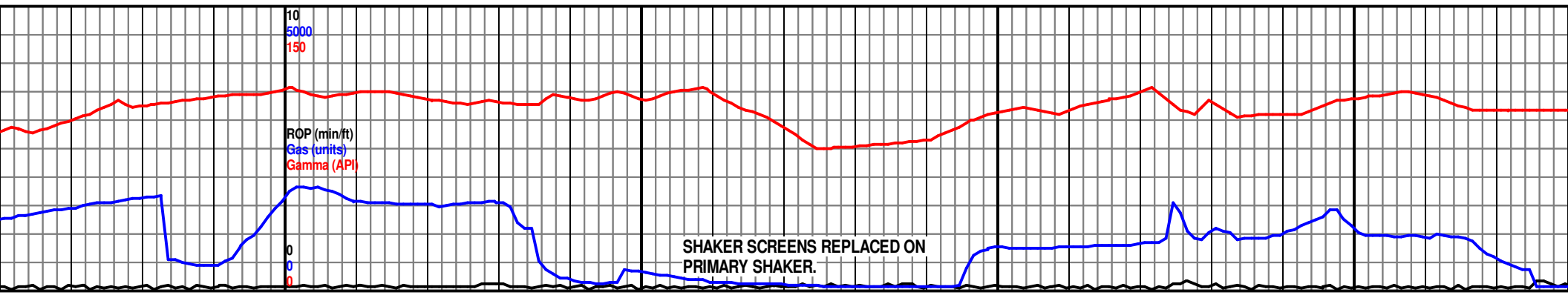
### EVENT

	Rft
	Sidewall





7750					7800					7850					7900					7950									
fg, sb mt, tr					SS: lt gy-gy, sme dk gy, sme clr-wh, sli frm-frm, vfg-fg, sb sph, sb ang-sb rnd, mod srted, calc cmt, uncons-mod cons, tr glauc, tr pyr, no vis stn, no fluor, imm bl/wh milky cut.					7325 TVD SS: lt gy-gy, sme dk gy, sme clr-wh, sli frm-frm, vfg-fg, sb sph, sb ang-sb rnd, mod srted, calc cmt, uncons-mod cons, tr glauc, tr pyr, no vis stn, no fluor, imm bl/wh milky cut.					SS: clr-wh, lt brn-gy, sli frm-frm, vfg-fg, sb sph, sb ang-sb rnd, mod srted, calc cmt, pred uncons, sme mod cons, tr glauc, tr pyr, no vis stn, no fluor, imm bl/wh milky cut.					SS: clr-wh, lt brn-gy, sli frm-frm, vfg-fg, sb sph, sb ang-sb rnd, mod srted, calc cmt, pred uncons, sme mod cons, tr glauc, tr pyr, no vis stn, no fluor, imm bl/wh milky cut.					SS: clr-wh, lt brn-gy, sli frm-frm, vfg-fg, sb sph, sb ang-sb rnd, mod srted, calc cmt, pred uncons, sme mod cons, tr glauc, tr pyr, no vis stn, no fluor, imm bl/wh milky cut.				



SHAKER SCREENS REPLACED ON  
PRIMARY SHAKER.

8000	8050	8100	8150
n, lt brn-gy, sli frm-frm, vfg-fg, sb sph, sb d, mod w srt, calc cmt, pred uncon, tr pyr, no vis stn, no fluor, imm bl/wh milky	SS: clr-wh, lt brn-gy, sli frm-frm, vfg-fg, sb sph, sb ang-sb rnd, mod w srt, calc cmt, pred uncon, tr glauc, tr pyr, no vis stn, no fluor, imm bl/wh milky cut.	SS: clr, lt brn-gy, sli frm-frm, vfg-fg, sb sph, sb ang-sb rnd, mod w srt, calc cmt, pred uncon, tr glauc, tr pyr, no vis stn, no fluor, imm bl/wh milky cut.	SS: clr, lt brn-gy, sli frm-frm, vfg-fg, sb sph, sb ang-sb rnd, mod w srt, calc cmt, pred uncon, tr glauc, tr pyr, no vis stn, no fluor, imm bl/wh milky cut.

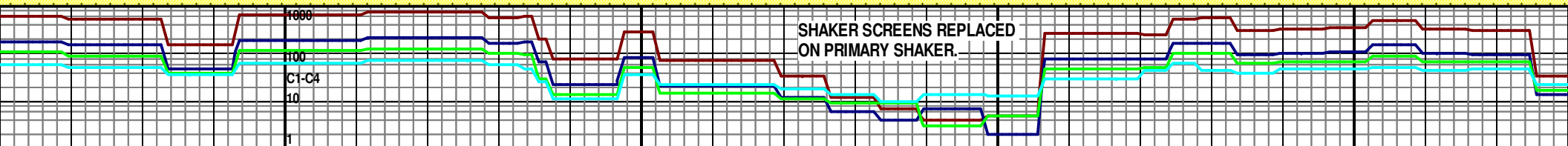
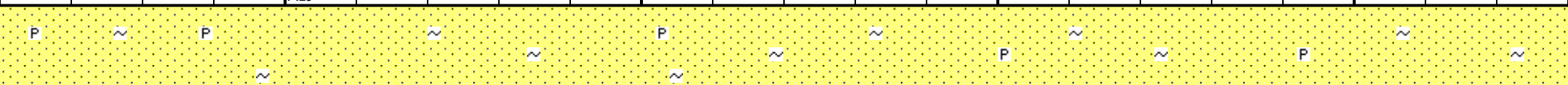
Mud Wt. 9.6 Vis. 33

962 MD  
0.56 INC  
72.89 AZM  
360.48 TVD  
21.0 VS

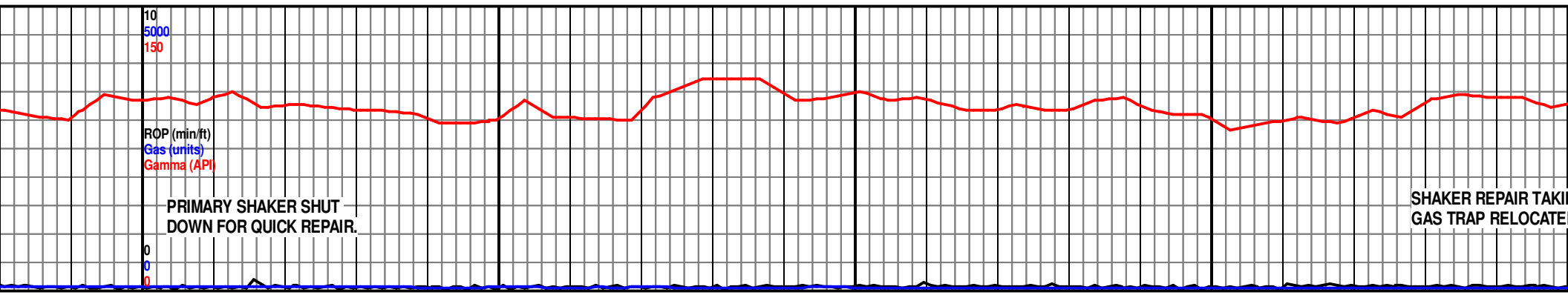
8056 MD  
88.41 INC  
270.87 AZM  
7361.33 TVD  
714.7 VS

8151 MD  
90.45 INC  
270.96 AZM  
7362.27 TVD  
809.3 VS

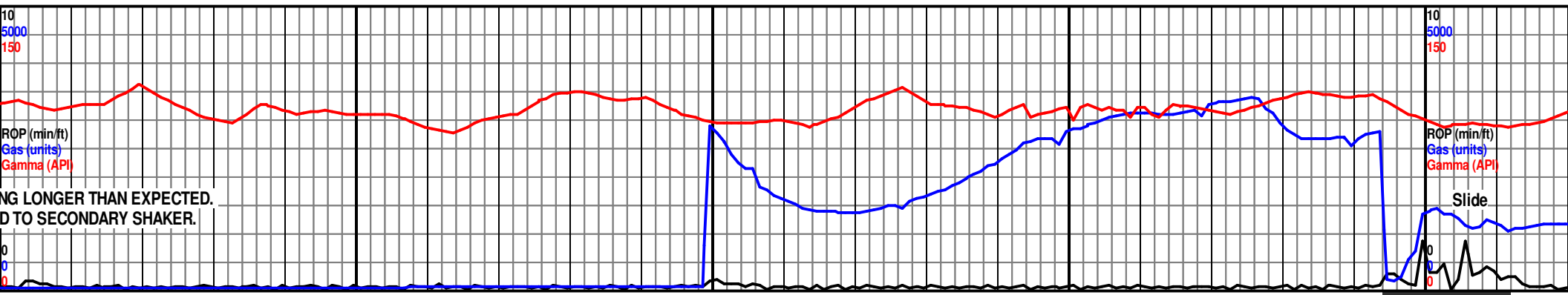
WOB: 25-27 klbs  
RPM: 67 |  
SPP: 3927 PSI  
SPM #1: 0  
SPM #2: 80  
Pump Rate: 296 GPM



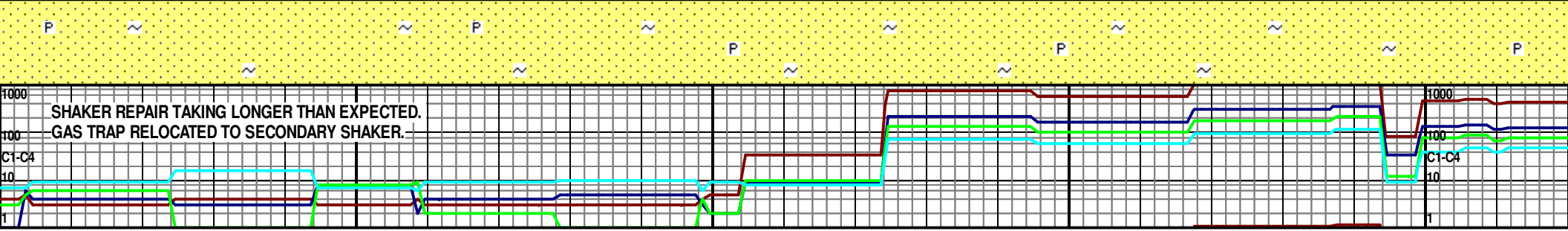
SHAKER SCREENS REPLACED  
ON PRIMARY SHAKER.



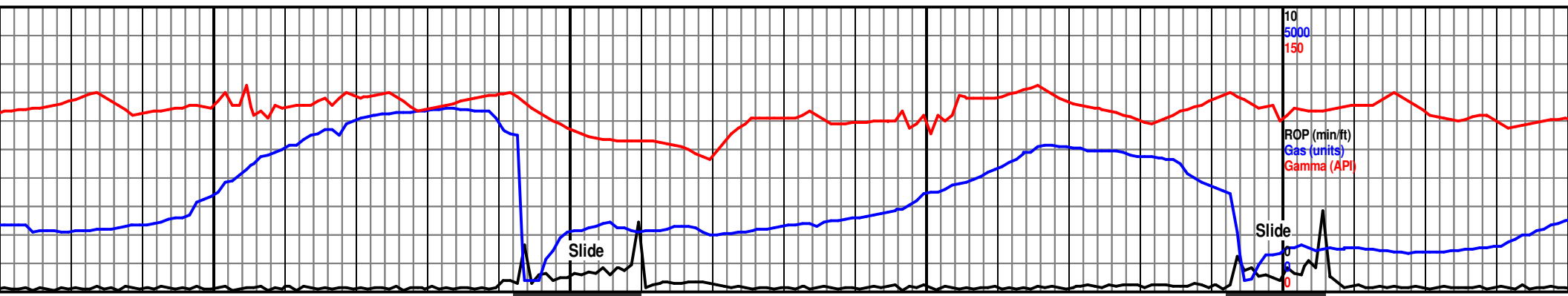
8200					8250					8300					8350					8400																																																																																																																																																																																																																																																																																																																																																																																																																																																																																																																																																																																																																																																																																																																																																																																																																																																																																																																																																																																																																																																																																																																																																																																																																																																																																																					
fg-fg, sb sph, sb cmt, pred uncons, tr or, imm bl/wh milky					7325 TVD SS: clr-wh, lt brn-tan, sli frm-frm, vfg-fg, sb sph, sb ang-sb rnd, mod w srted, calc cmt, pred uncons, tr glauc, tr pyr, no vis stn, no fluor, imm bl/wh milky cut.					SS: clr-wh, lt brn-tan, sli frm-frm, vfg-fg, sb sph, sb ang-sb rnd, mod w srted, calc cmt, pred uncons, tr glauc, tr pyr, no vis stn, no fluor, imm bl/wh milky cut.					SS: clr-wh, lt brn-tan, sme gy, sli frm-frm, vfg-fg, sb sph, sb ang-sb rnd, mod w srted, calc cmt, pred uncons, tr glauc, tr pyr, no vis stn, no fluor, imm bl/wh milky cut.					SS: clr-wh, lt brn-tan, sme gy, sli frm-frm, vfg-fg, sb sph, sb ang-sb rnd, mod w srted, calc cmt, pred uncons, tr glauc, tr pyr, no vis stn, no fluor, imm bl/wh milky cut.																																																																																																																																																																																																																																																																																																																																																																																																																																																																																																																																																																																																																																																																																																																																																																																																																																																																																																																																																																																																																																																																																																																																																																																																																																																																																																					



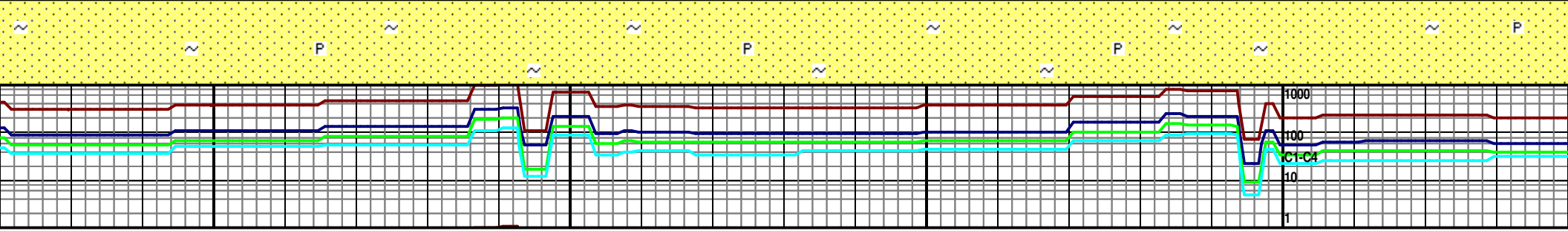
00	8450	8500	8550	8600
7325 TVD SS: clr-wh, lt brn-tan, sli frm-frm, vfg-fg, sb sph, sb ang-sb rnd, mod w srt, calc cmt, pred uncons, tr glauc, tr pyr, no vis stn, no fluor, imm bl/wh milky cut.	SS: clr-wh, lt brn-tan, sli frm-frm, vfg-fg, sb sph, sb ang-sb rnd, mod w srt, calc cmt, pred uncons, tr glauc, tr pyr, no vis stn, no fluor, imm bl/wh milky cut.	SS: clr-wh, lt brn-tan, sli frm-frm, vfg-fg, sb sph, sb ang-sb rnd, mod w srt, calc cmt, pred uncons, tr glauc, tr pyr, no vis stn, no fluor, imm bl/wh milky cut.	SS: clr-wh, lt brn-tan, sli frm-frm, vfg-fg, sb sph, sb ang-sb rnd, mod w srt, calc cmt, pred uncons, tr glauc, tr pyr, no vis stn, no fluor, imm bl/wh milky cut.	7325 TVD SS: clr-wh, lt brn-tan, sli frm-frm, vfg-fg, sb sph, sb ang-sb rnd, mod w srt, calc cmt, pred uncons, tr glauc, tr pyr, no vis stn, no fluor, imm bl/wh milky cut.
8434 MD 90.31 INC 269.84 AZM 7361.52 TVD 1090.7 VS		8528 MD 89.86 INC 269.23 AZM 7361.38 TVD 1184.0 VS		8600 MD 89.86 INC 269.23 AZM 7361.38 TVD 1184.0 VS
		WOB: 5-8 klbs RPM: 71   SPP: 3026 PSI SPM #1: 0 SPM #2: 79 Pump Rate: 295 GPM		

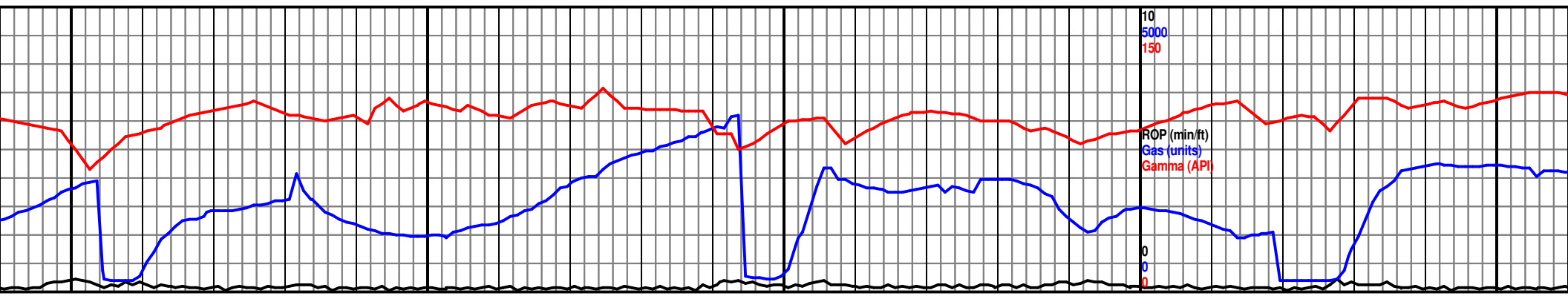




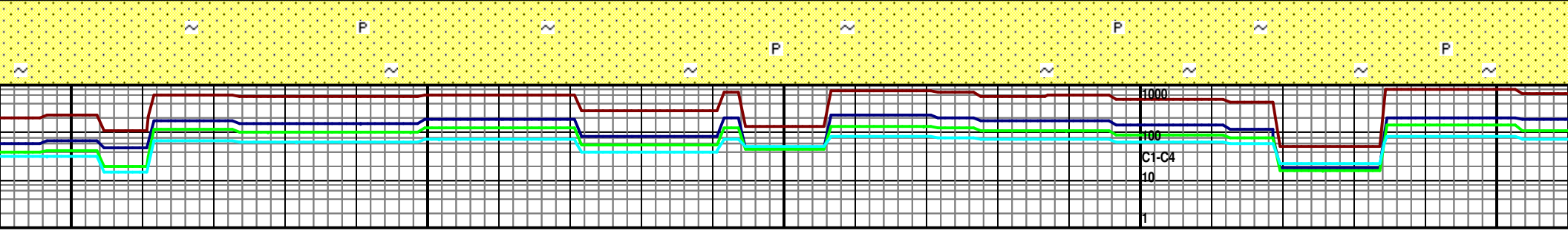


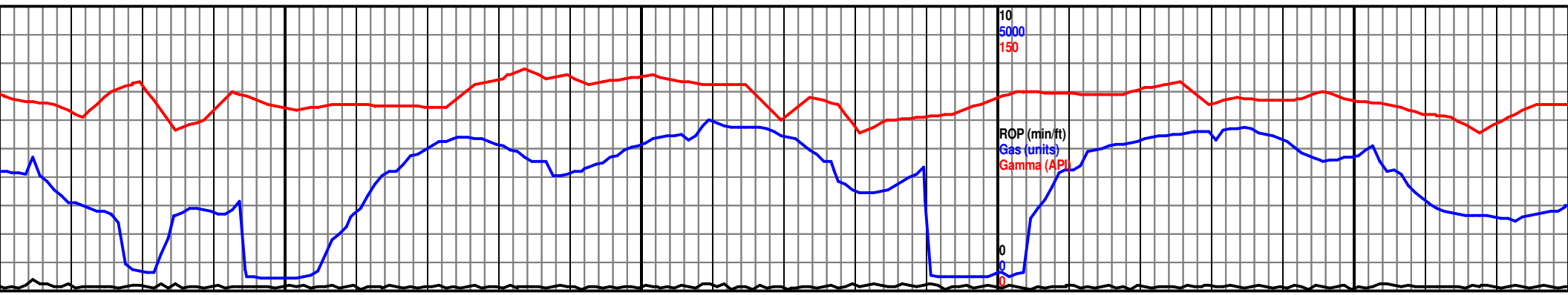
a, sme gy, sli frm-frm, vfg-fg, nd, mod w srted, calc cmt, pred pyr, no vis stn, no fluor, imm	SS: clr-wh, lt brn-tan, sme gy, sli frm-frm, vfg-fg, sb sph, sb ang-sb rnd, mod w srted, calc cmt, pred uncons, tr glauc, tr pyr, no vis stn, no fluor, imm bl/wh mlky cut.	SS: clr-wh, lt brn-tan, sli frm-frm, vfg-fg, sb sph, sb ang-sb rnd, mod w srted, calc cmt, pred uncons, tr glauc, tr pyr, no vis stn, no fluor, wk slw mlky cut.	SS: clr-wh, lt brn-tan, sli frm-frm, vfg-fg, sb sph, sb ang-sb rnd, mod w srted, calc cmt, pred uncons, tr glauc, tr pyr, no vis stn, no fluor, wk slw mlky cut.	7325 TVD SS: clr-wh, lt brn-tan, sli frm-frm, vfg-fg, s sb ang-sb rnd, mod w srted, calc cmt, pre uncons, tr glauc, tr pyr, no vis stn, no flu slw mlky cut.
623 MD 1.20 INC 70.25 AZM 360.50 TVD 278.4 VS		Mud Wt. 9.4 Vis. 52		
		8717 MD 89.86 INC 271.89 AZM 7359.63 TVD 1372.0 VS		8812 MD 87.93 INC 272.36 AZM 7361.46 TVD 1466.8 VS



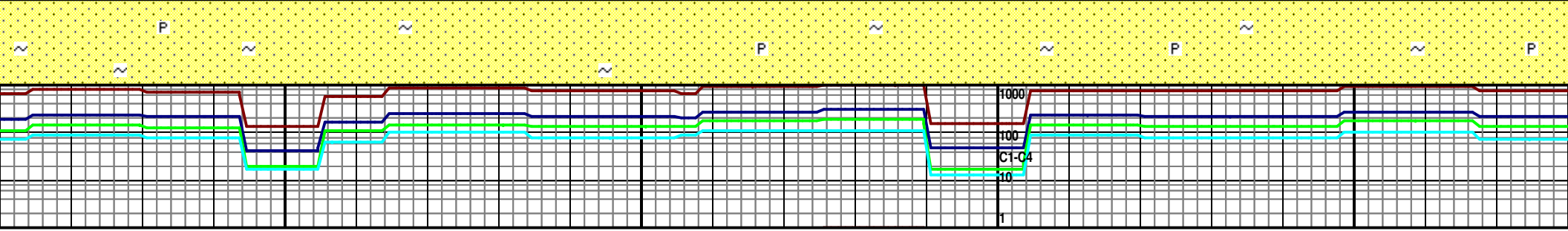


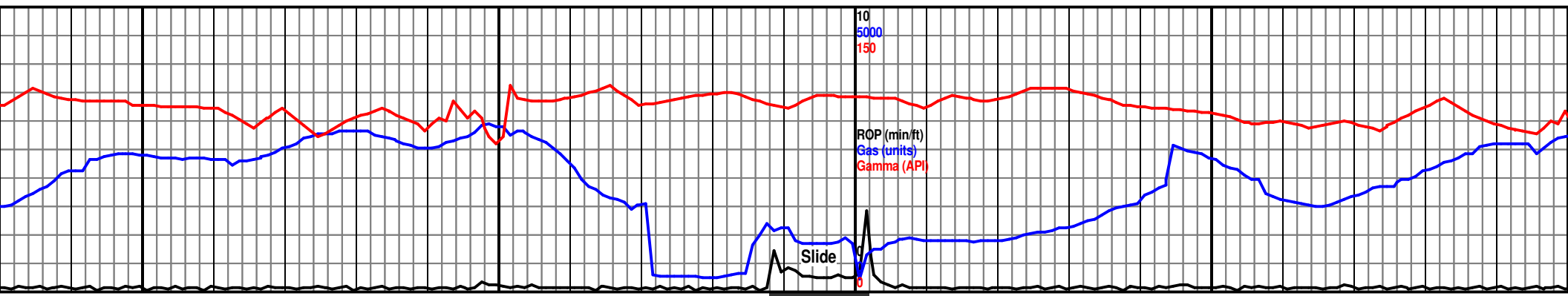
8850	8900	8950	9000	9050
SS: clr-wh, lt brn-tan, sli frm-frm, vfg-fg, sb sph, sb ang-sb rnd, mod w srted, calc cmt, pred uncons, tr glauc, tr pyr, no vis stn, no fluor, wk slw mlky cut.	SS: clr-wh, lt brn-tan, sli frm-frm, vfg-fg, sb sph, sb ang-sb rnd, mod w srted, calc cmt, pred uncons, tr glauc, tr pyr, no vis stn, no fluor, wk slw mlky cut.	SS: clr-wh, lt brn-tan, sli frm-frm, vfg-fg, sb sph, sb ang-sb rnd, mod w srted, calc cmt, pred uncons, tr glauc, tr pyr, no vis stn, no fluor, wk slw mlky cut.	SS: clr-wh, lt brn-tan, sli frm-frm, vfg-fg, sb sph, sb ang-sb rnd, mod w srted, calc cmt, pred uncons, tr glauc, tr pyr, no vis stn, no fluor, wk slw mlky cut.	SS: clr-wh, lt brn-tan, sli frm-frm, vfg-fg, sb sph, sb ang-sb rnd, mod w srted, calc cmt, pred uncons, tr glauc, tr pyr, no vis stn, no fluor, wk slw mlky cut.
	8906 MD 88.80 INC 272.95 AZM 7364.14 TVD 1560.6 VS		7325 TVD 88.35 INC 272.85 AZM 7366.48 TVD 1654.4 VS  WOB: 23-26 klbs RPM: 65 SPP: 3427 PSI SPM #1: 0 SPM #2: 79 Pump Rate: 295 GPM	



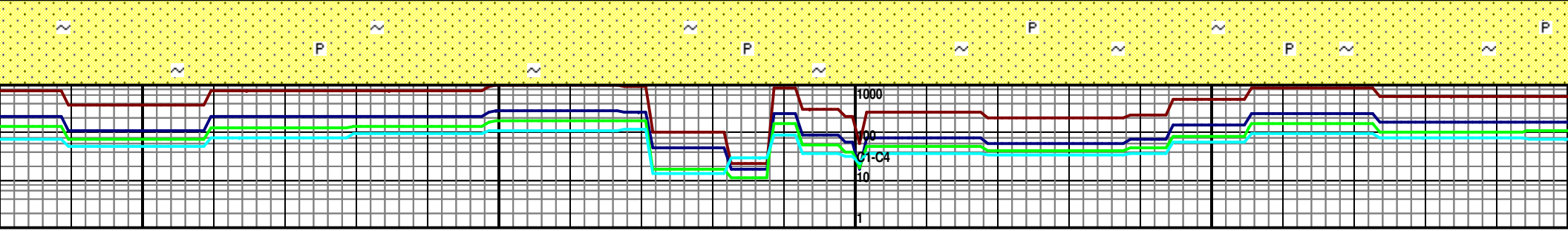


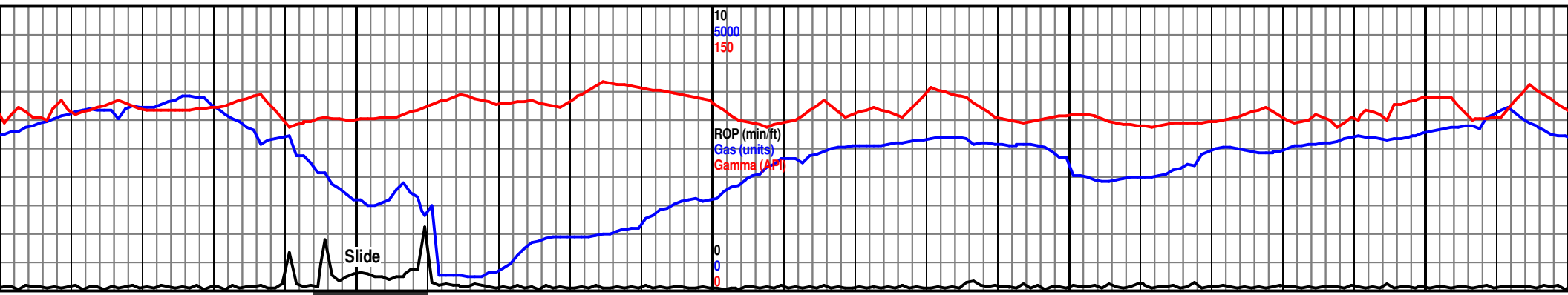
9100					9150					9200					9250				
n, lt brn-tan, sli frm-frm, vfg-fg, sb sph, sb ang-sb rnd, mod w srted, calc cmt, pred r glauc, tr pyr, no vis stn, no fluor, wk cut.					SS: clr-wh, lt brn-tan, sli frm-frm, vfg-fg, sb sph, sb ang-sb rnd, mod w srted, calc cmt, pred uncons, tr glauc, tr pyr, no vis stn, no fluor, wk slw mlky cut.					SS: clr-wh, lt brn-tan, sli frm-frm, vfg-fg, sb sph, sb ang-sb rnd, mod w srted, calc cmt, pred uncons, tr glauc, tr pyr, no vis stn, no fluor, wk slw mlky cut.					7325 TVD SS: clr-wh, lt brn-tan, sme gy, sli frm-frm, vfg-fg, sb sph, sb ang-sb rnd, mod w srted, calc cmt, pred uncons, tr glauc, tr pyr, no vis stn, no fluor, wk slw mlky cut.				
9095 MD 89.41 INC 273.74 AZM 7368.34 TVD 1749.2 VS										9189 MD 89.53 INC 273.99 AZM 7369.21 TVD 1843.2 VS					7375				
															7425				





m, vfg-fg, sb sph, c cmt, pred stn, no fluor, wk	SS: lt brn-tan, clr-wh, sme gy-dk gy, sli frm-frm, vfg-fg, sb sph, sb ang-sb rnd, mod w srt, calc cmt, pred uncons, tr glauc, tr pyr, no vis stn, no flour, wk slw mlky cut.	SS: lt brn-tan, clr-wh, sme gy-dk gy, sli frm-frm, vfg-fg, sb sph, sb ang-sb rnd, mod w srt, calc cmt, pred uncons, tr glauc, tr pyr, no vis stn, no flour, wk slw mlky cut.	7325 TVD SS: lt brn-tan, clr-wh, sme gy-dk gy, sli frm-frm, vfg-fg, sb sph, sb ang-sb rnd, mod w srt, calc cmt, pred uncons, tr glauc, tr pyr, no vis stn, no flour, wk slw mlky cut.	SS: lt brn-tan, clr-wh, sme gy-dk gy, sli frm-frm, vfg-fg, sb sph, sb ang-sb rnd, mod w srt, calc cmt, pred uncons, tr glauc, tr pyr, no vis stn, no flour, wk slw mlky cut.





00 9550 9600 9650 9700

SS: clr-wh, sme lt brn-tan, sli frm-frm, vfg-fg, sb sph, sb ang-sb rnd, mod w srted, calc cmt, pred uncons, tr glauc, tr pyr, no vis stn, no fluor, wk slw mlky cut.

SS: clr-wh, sme lt brn-tan, sli frm-frm, vfg-fg, sb sph, sb ang-sb rnd, mod w srted, calc cmt, pred uncons, tr glauc, tr pyr, no vis stn, no fluor, wk slw mlky cut.

7325 TVD  
SS: clr-wh, lt brn-tan, sli frm-frm, vfg-fg, sb sph, sb ang-sb rnd, mod w srted, calc cmt, pred uncons, tr glauc, tr pyr, no vis stn, no fluor, wk slw mlky cut.

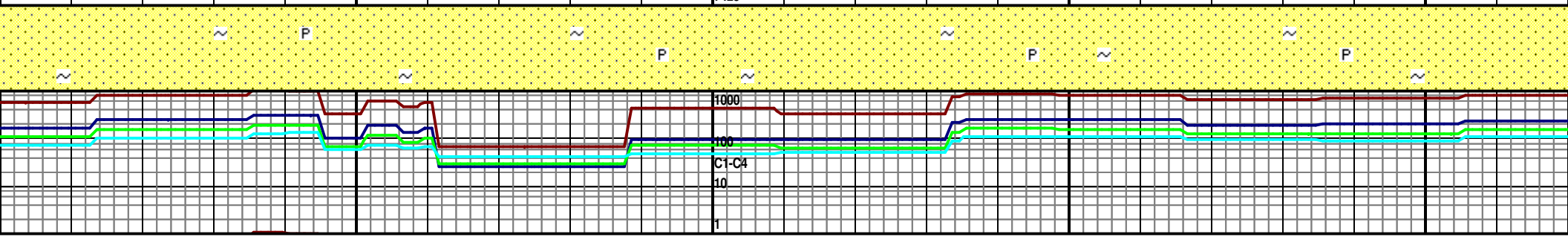
SS: clr-wh, lt brn-tan, sli frm-frm, vfg-fg, sb sph, sb ang-sb rnd, mod w srted, calc cmt, pred uncons, tr glauc, tr pyr, no vis stn, no fluor, wk slw mlky cut.

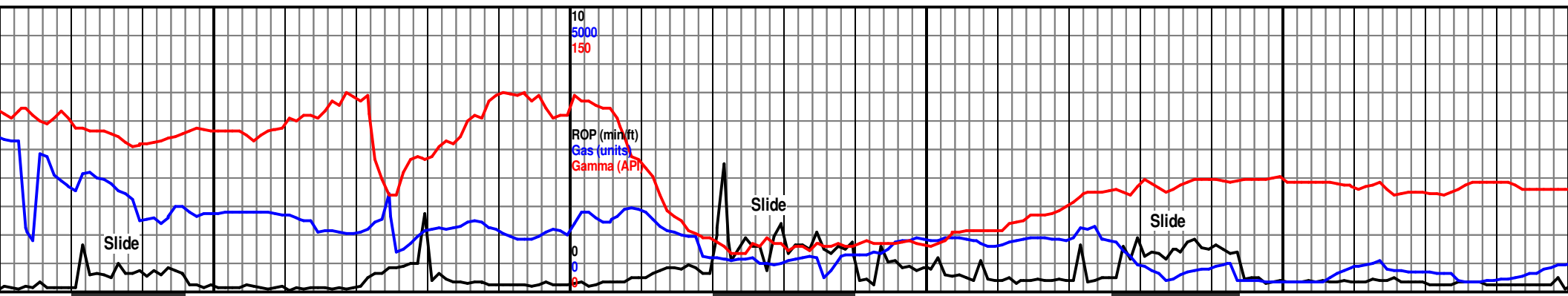
SS: clr-wh, lt brn-tan, sli frm-frm, vfg-fg, sb sph, sb ang-sb rnd, mod w srted, calc cmt, pred uncons, tr glauc, tr pyr, no vis stn, no fluor, wk slw mlky cut.

Mud Wt. 9.2 Vis. 33

9566 MD  
90.14 INC  
272.41 AZM  
7380.21 TVD  
2219.4 VS

9661 MD  
92.74 INC  
272.60 AZM  
7377.82 TVD  
2314.1 VS





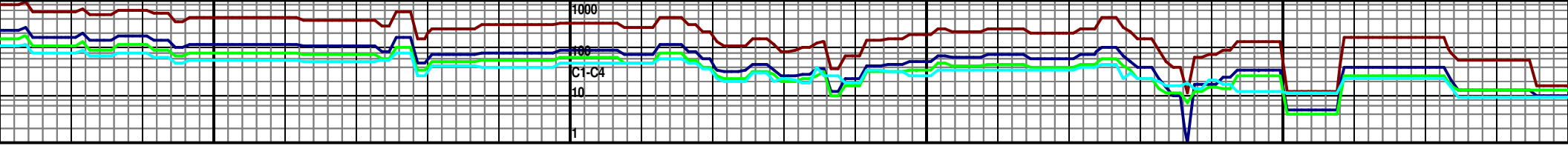
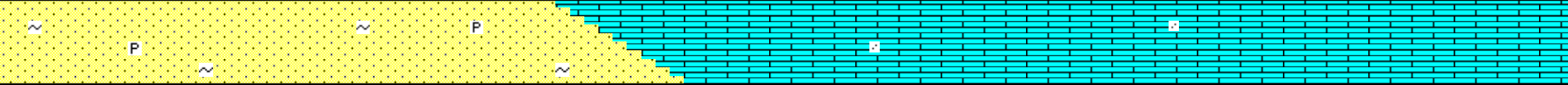
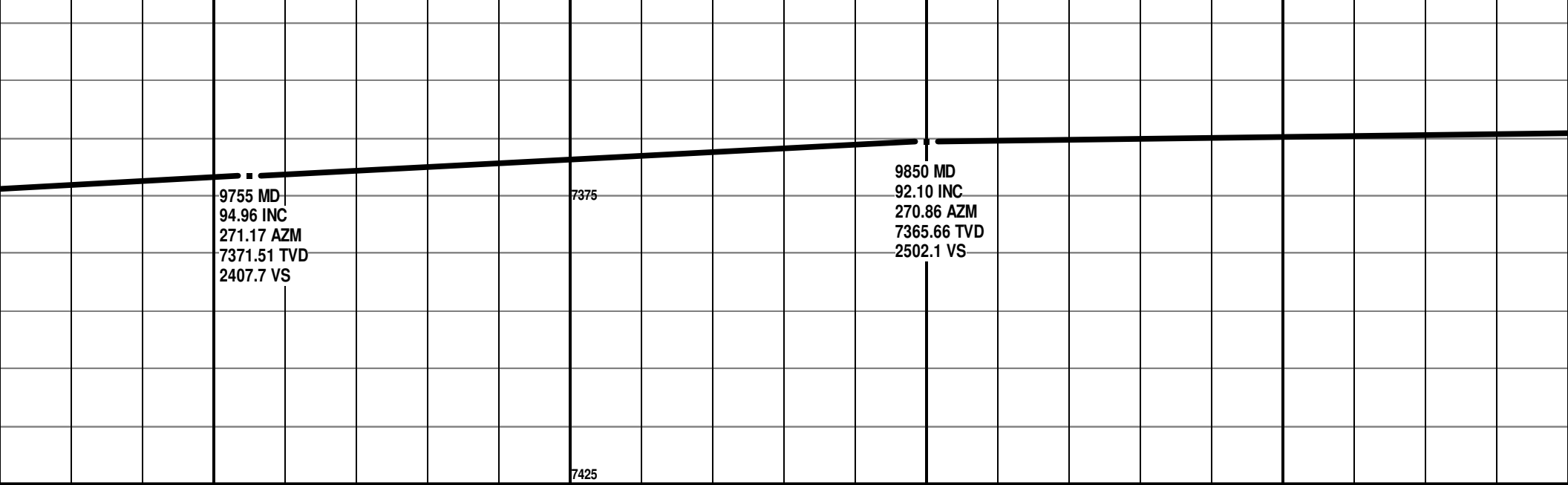
9750 9800 9850 9900

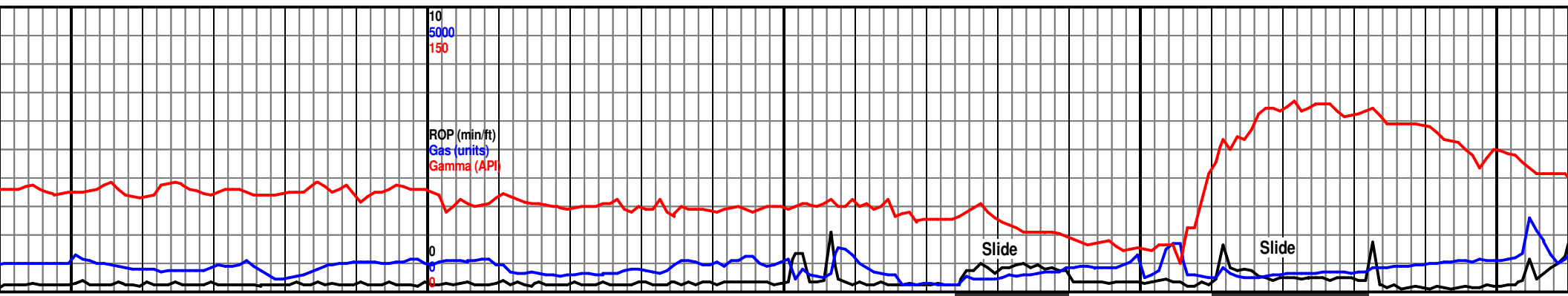
h, sme gy, sli frm-frm, vfg-fg, SS: clr-wh, lt brn-tan, sme gy, sli frm-frm, vfg-fg, sb sph, sb ang-sb rnd, mod w srted, calc cmt, pred uncon, tr glauc, tr pyr, no vis stn, no fluor, wk slw mlky cut.

LS: wh, lt gy-gy, sme tan, mod frm-frm, anhed, mic-crp xln. W/ sme SS.

LS: wh-tn, lt gy, mod frm, anhed, mic-crp xln, tr SS.

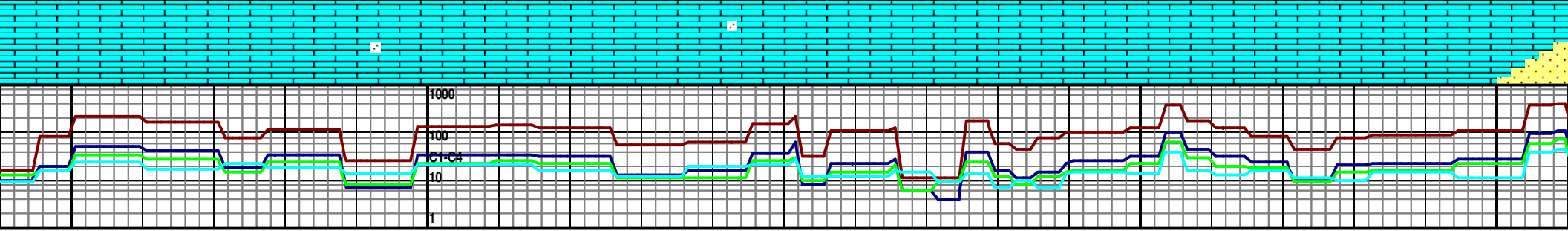
LS: wh-tn, lt gy, mod frm, anhed, mic-cr

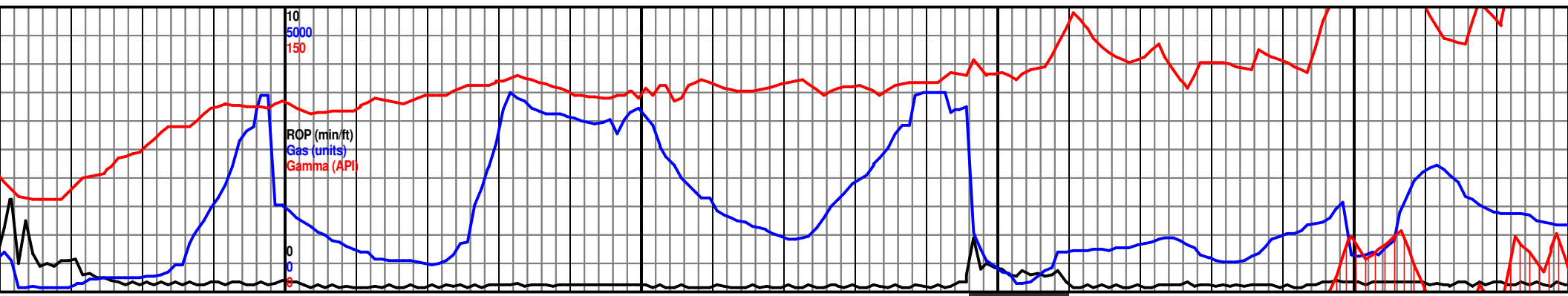




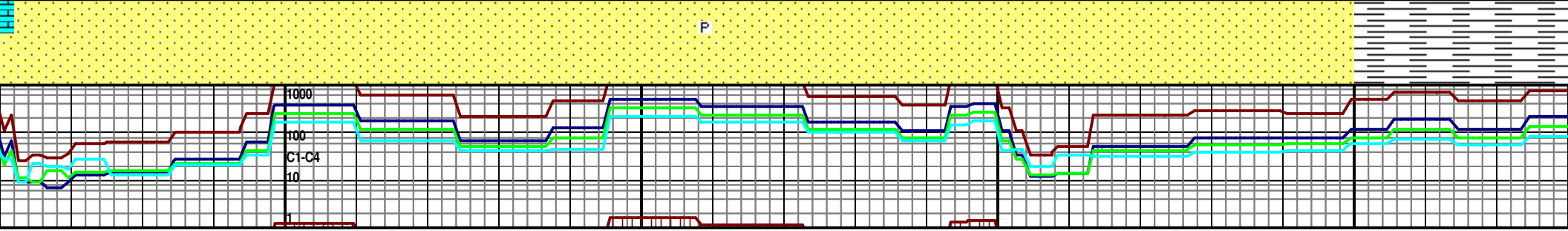
p xln.	LS: wh-tn, lt gy, mod frm, anhed, mic-crp xln.	7325 TVD LS: wh-tn, lt gy, sme lt gy/brn, mod frm, anhed, mic-crp xln, tr SS.	TOOH @ 10,052' MD at 8:53 PM on 7/30/2015 for new mud motor. Resume drilling @ 8:54 AM on 7/31/2015.	LS: wh, lt gy-gy, sme tan, mod frm-frm, anhed, mic-crp xln.	LS: wh, lt gy-gy, sme tan, mod frm-frm, anhed, mic-crp xln. W/ sme SS: clr-wh, gy, sli frm-frm, vfg-fg, sb sph, sb ang-sb rnd, mod w srtd, calc cmt, mod cons-uncons.	SS: clr-tra mod wl s fluor, fnt
					Mud Wt. 9.1 Vis. 39	TOOH @ 7/31/2015 Resume d on 7/31/20

9944 MD 89.72 INC 268.69 AZM 7364.17 TVD 2595.5 VS		7375	10038 MD 90.22 INC 265.49 AZM 7364.22 TVD 2688.3 VS		10132 MD 87.93 INC 267.60 AZM 7365.74 TVD 2780.9 VS	
			BHA #4 Bit: 6 1/8" REED SKH15 16M-E1 (5x14's Jets) Motor: Phoenix 24XH, 1.5° Bend Bit to Gamma: 53.31' Bit to Survey: 68'		BHA #5 Bit: 6 1/8" Varel 613 Motor: Ensign HR, 1 Bit to Gamma: 52.45' Bit to Survey: 64.74'	
	WOB: 36-38 klbs RPM: 54 SPP: 3804 PSI SPM #1: 0 SPM #2: 79 Pump Rate: 295 GPM	7425				

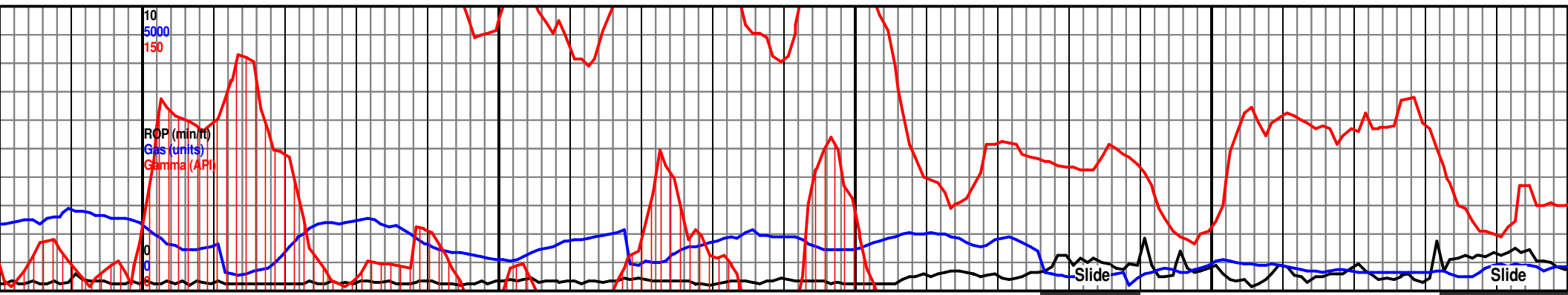




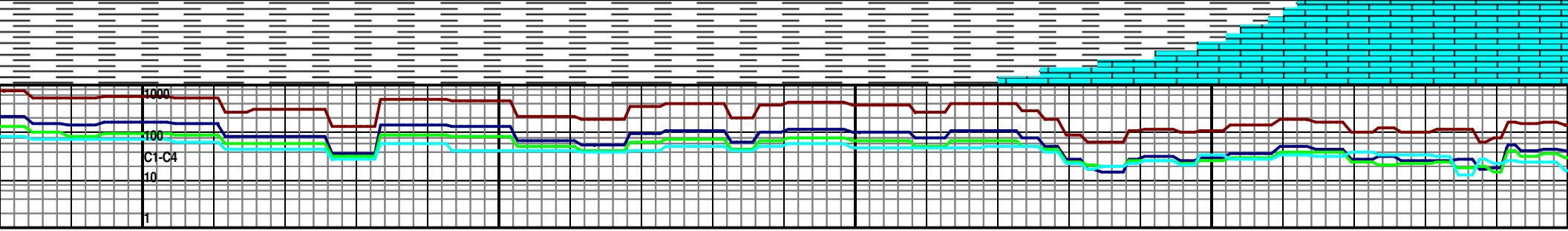
transl tn, lt brn, vfg-fg, sb ang-sb rnd, rtd, calc cmt, uncon, tr brn stn, tr yel blu/wh cut.	SS: clr-transl tn, lt brn, vfg-fg, sb ang-sb rnd, mod wl srted, calc cmt, uncon, tr brn stn, tr yel fluor, fnt blu/wh cut.	SS: transl brn, sme gy/brn, tr clr, vfg-fg, sb ang-sb rnd, mod wl srted, calc cmt, uncon, scat brn stn, tr pyr, tr bri yel fluor, wk mlky cut.	SS: transl brn, sme gy/brn, tr clr, vfg-fg, sb ang-sb rnd, mod wl srted, calc cmt, uncon, scat brn stn, tr bri yel fluor, wk mlky cut.	SH: blk-dk gy, sli frm-frm, sbb v calc.
10,162' MD at 12:59 PM on 5 for new mud motor.				
Drilling @ 11:56 PM 015				
8/1/2015	10226 MD 88.74 INC 268.01 AZM 7368.47 TVD 2873.9 VS		10321 MD 88.41 INC 268.91 AZM 7370.83 TVD 2968.0 VS	
DGU 5° Bend				
8/1/15				

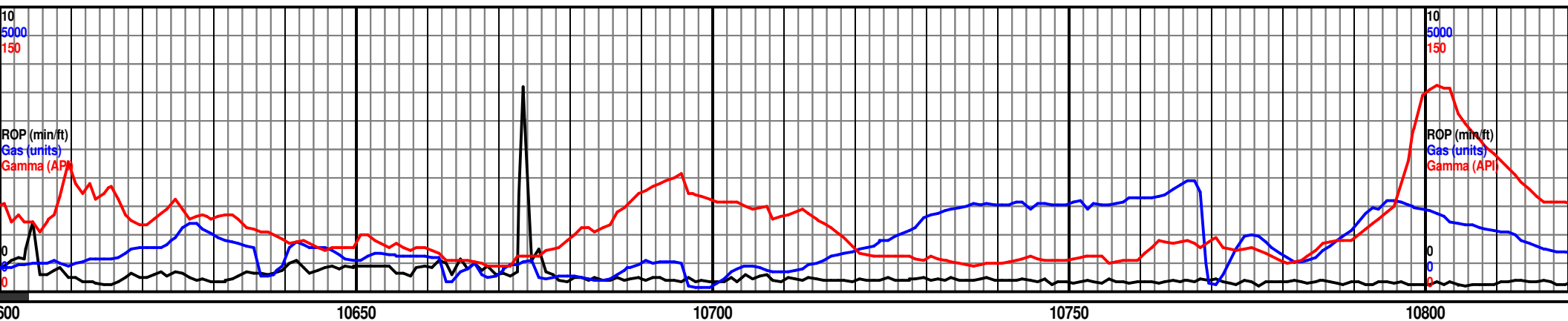




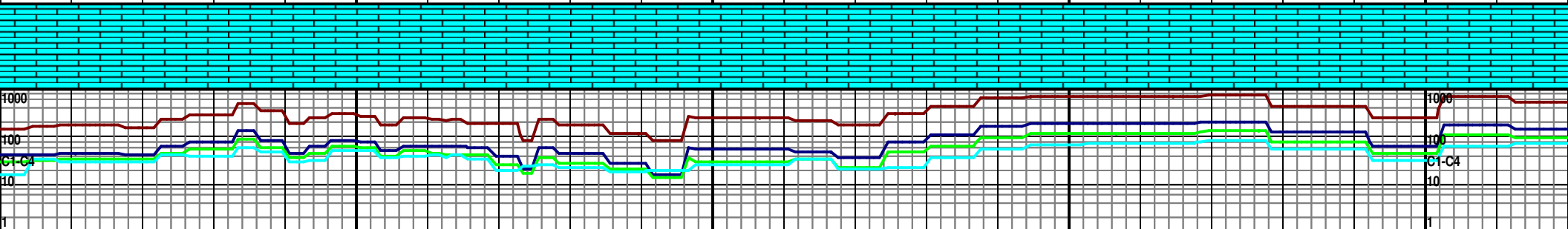


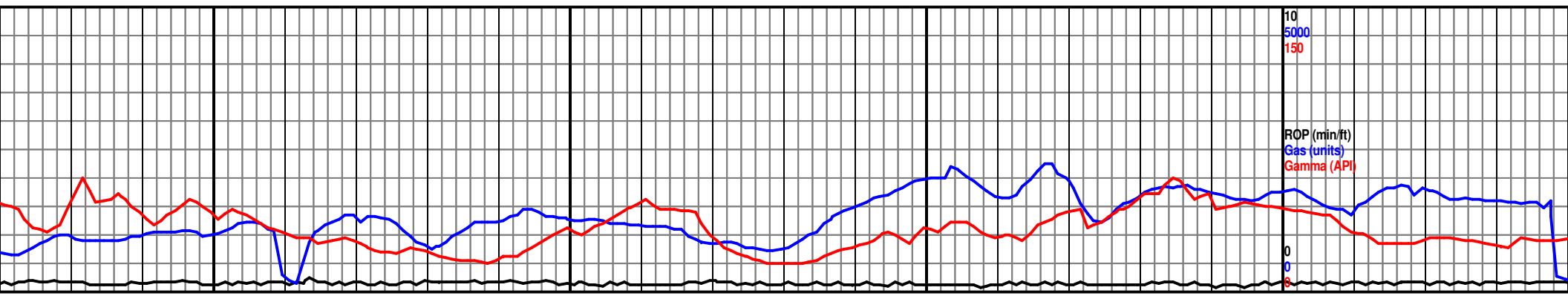
10400	10450	10500	10550	10600
ky, scat lse calc,	SH: blk-dk gy, sli frm-frm, sbblky-sbplty, scat lse calc, v calc.	SH: blk-dk gy, sli frm-frm, sbblky-sbplty, scat lse calc, v calc.	SH: blk-dk gy, frm, sbblky-sbplty, scat lse calc. Scat LS: tn-wh, frm, anhed, mic-crp xln, tr SS.	LS: tn-wh, lt gy, frm-mod frm, anhed, mic-crp xln.
7325 TVD				





7325 TVD LS: tn-wh, lt gy, frm-mod frm, anhed, mic-crp xln.	10650 LS: tn-wh, lt gy, frm-mod frm, anhed, mic-crp xln.	10700 LS: tn-brn, scat lt gy, frm-mod frm, anhed, mic-crp xln.	10750 LS: tn-brn, scat lt gy, frm-mod frm, anhed, mic-crp xln.	10800 7325 TVD LS: tn-wh, lt gy, frm-mod frm, anhed, mic-crp xln.
	TOOH @ 10,665' MD at 5:47 AM on 8/1/2015 for new bit & mud motor. Resume drilling @ 5:50 PM on 8/1/2015	BHA #5 Bit: 6 1/8" Smith 613 (6x13's Jets) Motor: BICO SS140, 1.5° Bend Bit to Gamma: 55.94' Bit to Survey: 70'		
7375 10604 MD 89.16 INC 271.15 AZM 7380.60 TVD 3248.3 VS		10698 MD 88.91 INC 271.24 AZM 7382.18 TVD 3342.0 VS		7375 10793 MD 89.02 INC 271.39 AZM 7383.90 TVD 3436.6 VS





10850

10900

10950

11000

-mod frm, anhed, mic-crp

LS: tn-wh, lt gy, frm-mod frm, anhed, mic-crp  
xln.

LS: tn-wh, lt gy, frm-mod frm, anhed, mic-crp  
xln.

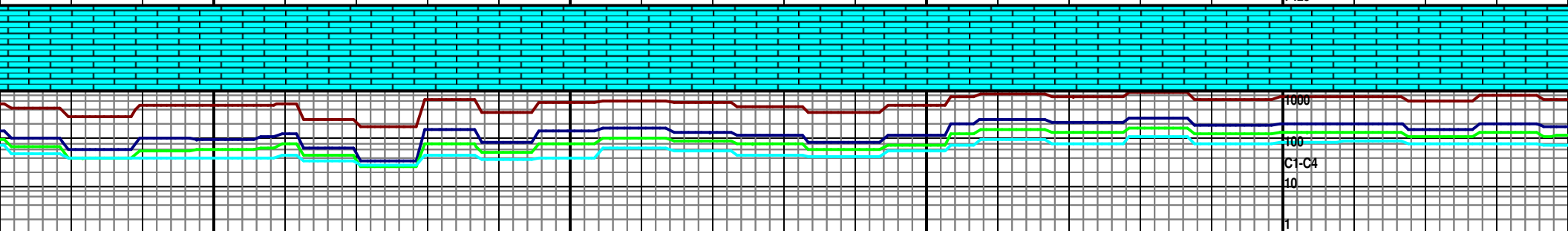
LS: tn-wh, lt gy, frm-mod frm, anhed, mic-crp  
xln.

7325 TVD  
LS: tn-lt gy/brn, lt gy, frm-mod frm, anhed  
mic-crp xln.

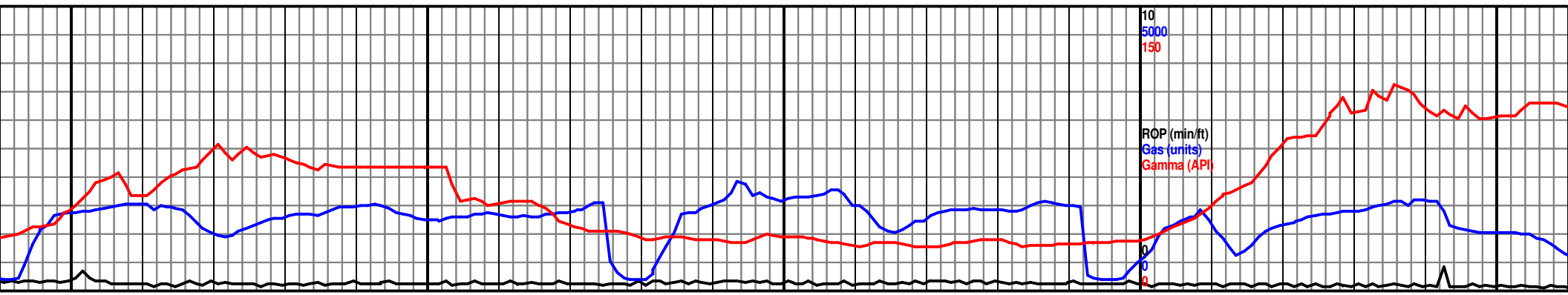
10887 MD  
89.08 INC  
271.64 AZM  
7385.45 TVD  
3530.3 VS

10981 MD  
88.74 INC  
271.55 AZM  
7387.24 TVD  
3624.0 VS

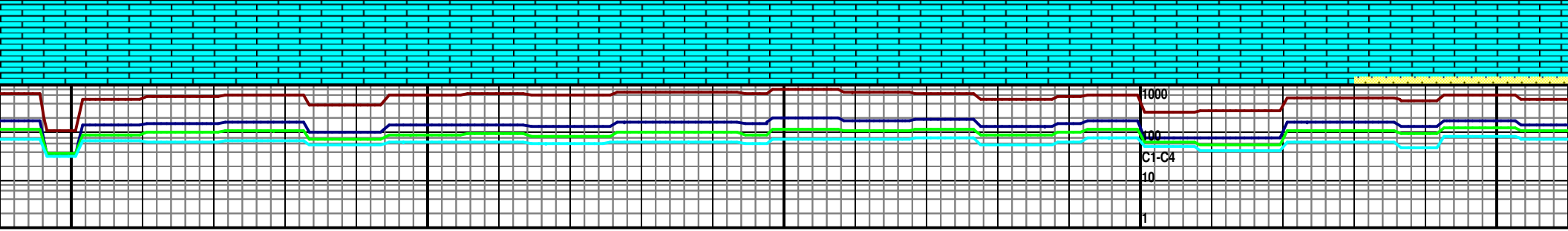
WOB: 24-25 klbs  
RPM: 60  
SPP: 4143 PSI  
SPM #1: 0  
SPM #2: 76  
Pump Rate: 284 GPM

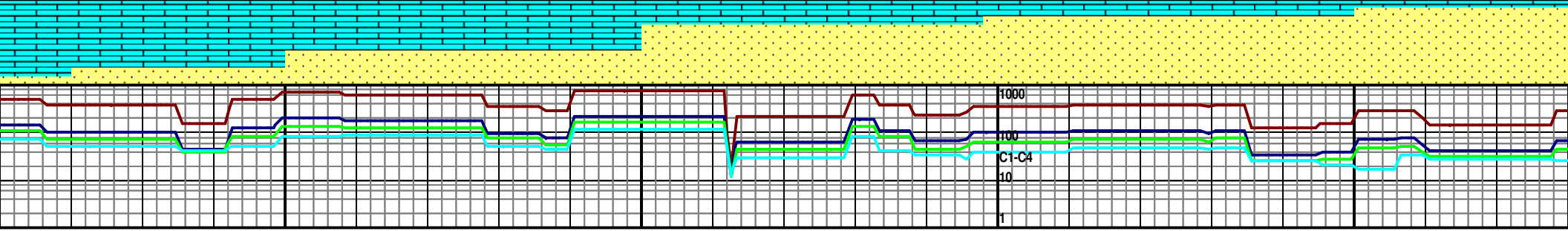
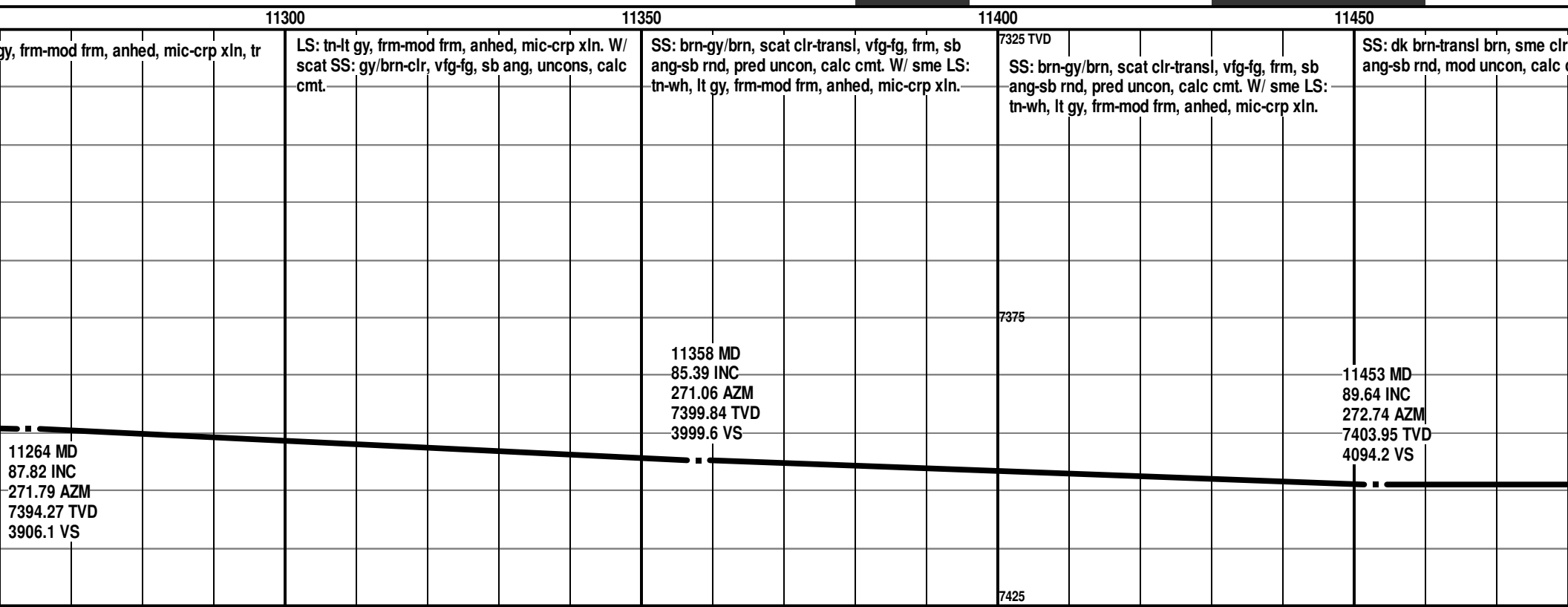
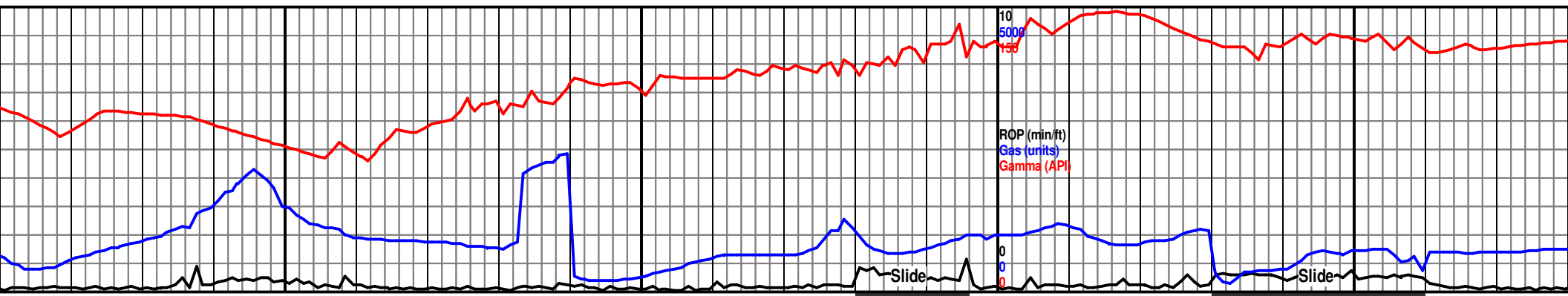


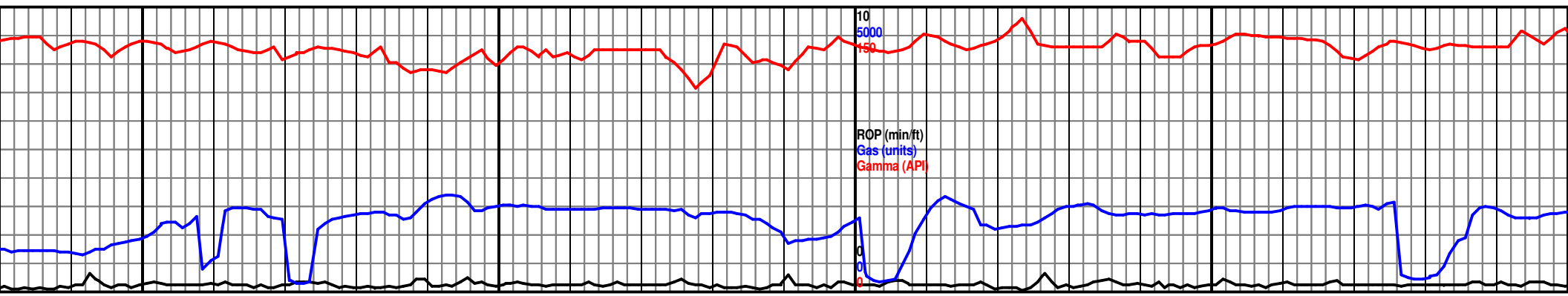
1000  
100  
10  
1  
C1-C4



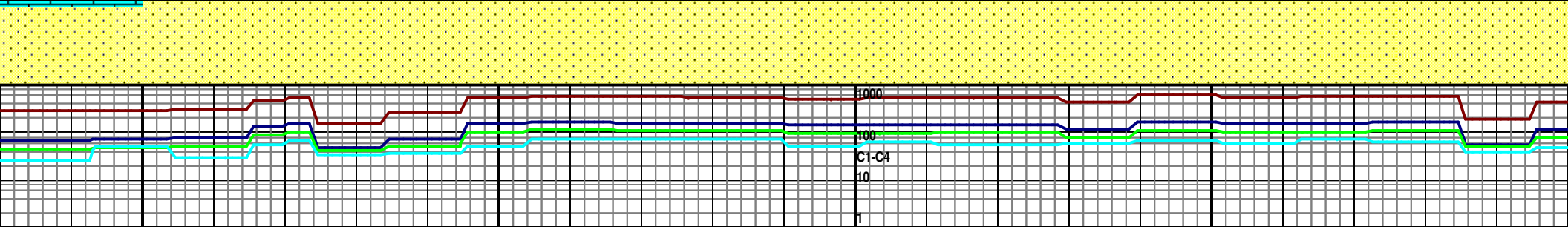
11050	11100	11150	11200	11250
d, LS: tn-lt gy/brn, lt gy, frm-mod frm, anhed, mic-crp xln.	LS: tn-lt gy/brn, lt gy, frm-mod frm, anhed, mic-crp xln.	LS: tn-lt gy/brn, lt gy, frm-mod frm, anhed, mic-crp xln.	7325 TVD LS: tn-lt gy, frm-mod frm, anhed, mic-crp xln, tr SS.	LS: tn-lt g SS.
	Mud Wt. 9.3 Vis. 38			
	11075 MD 88.46 INC 271.96 AZM 7389.54 TVD 3717.7 VS		11170 MD 88.99 INC 272.03 AZM 7391.65 TVD 3812.4 VS	

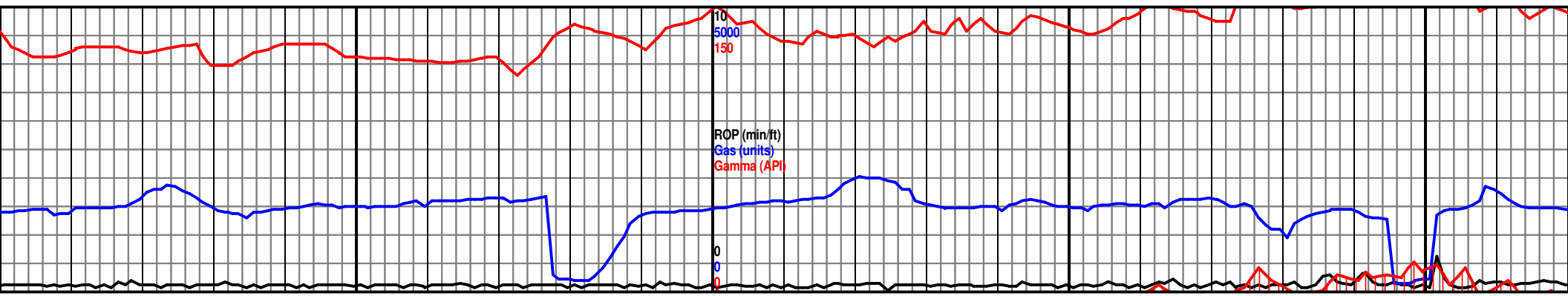






11500	11550	11600	11650	11700
vfg-fg, frm, sb cmt, tr LS.	SS: dk brn-transl brn, sme clr, vfg-fg, frm, sb ang-sb rnd, mod uncon, calc cmt, tr LS.	SS: dk brn-transl brn, sme clr, vfg-fg, frm, sb ang-sb rnd, mod uncon, calc cmt, tr LS.	7325 TVD SS: dk brn-transl brn, sme clr, vfg-fg, frm, sb ang-sb rnd, mod uncon, calc cmt, tr LS.	SS: dk brn-transl brn, sme clr, vfg-fg, frm, sb ang-sb rnd, mod con, calc cmt, tr LS
WOB: 32-33 klbs RPM: 61 SPP: 4203 PSI SPM #1: 0 SPM #2: 79 Pump Rate: 295 GPM			8/2/2015	
			7375	
	11547 MD 90.45 INC 273.33 AZM 7403.88 TVD 4188.1 VS		11641 MD 89.89 INC 273.06 AZM 7403.60 TVD 4281.9 VS	
			7425	





<p>SS: dk brn-transl brn, sme clr, vfg-fg, frm, sb ang-sb rnd, mod con, calc cmt, tr LS</p> <p>Mud Wt. 9.4 Vis. 38</p> <p>11735 MD 89.89 INC 273.06 AZM 7403.78 TVD 4375.8 VS</p>	<p>SS: dk brn-med gy, sme transl-clr, vfg-fg, frm, sb ang-sb rnd, mod cons, calc cmt.</p>	<p>SS: dk brn-med gy, sme transl-clr, vfg-fg, frm, sb ang-sb rnd, mod cons, calc cmt.</p>	<p>SS: dk brn-med gy, sme transl-clr, vfg-fg, frm, sb ang-sb rnd, mod cons, calc cmt.</p>	<p>SS: dk brn, transl b ang-sb rnd, mod ur</p>
---	---	---	---	--

