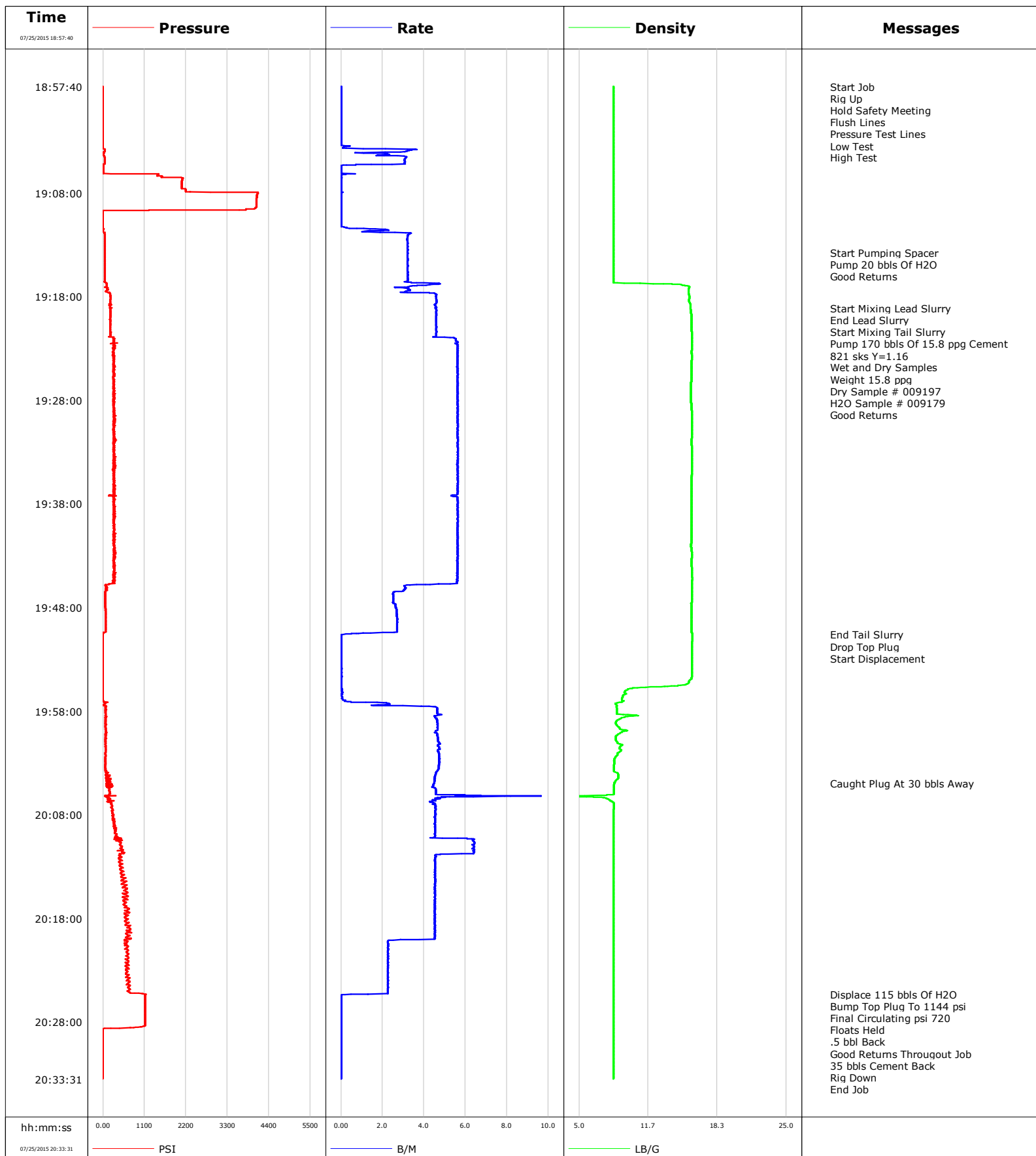


**Well** Troudt 6  
**Field** DJ  
**Engineer** Justin Zika/Leiker  
**Country** United States

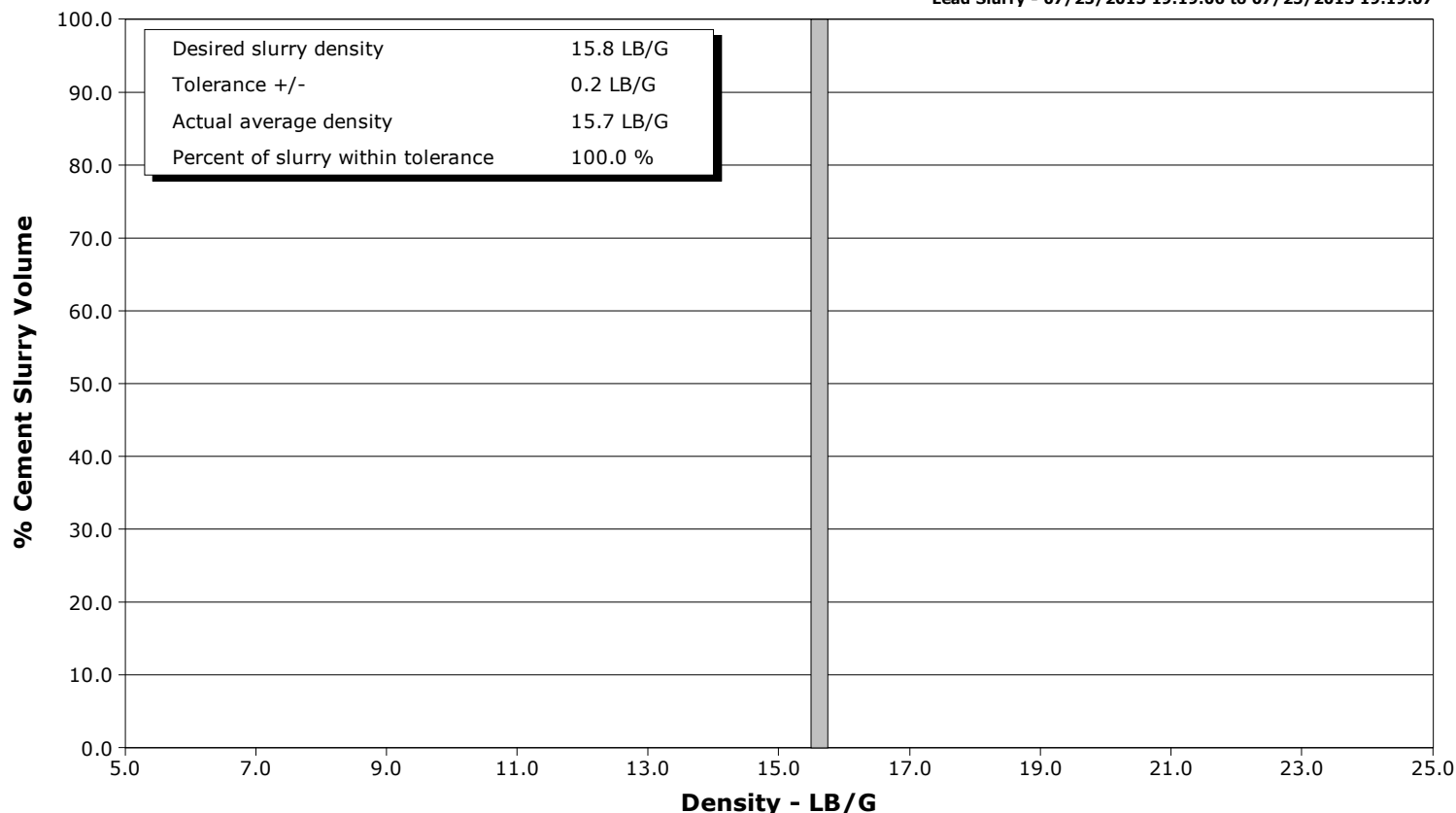
**Client** Extraction Oil Gas  
**SIR No.** 2166497  
**Job Type** Surface  
**Job Date** 07-25-2015



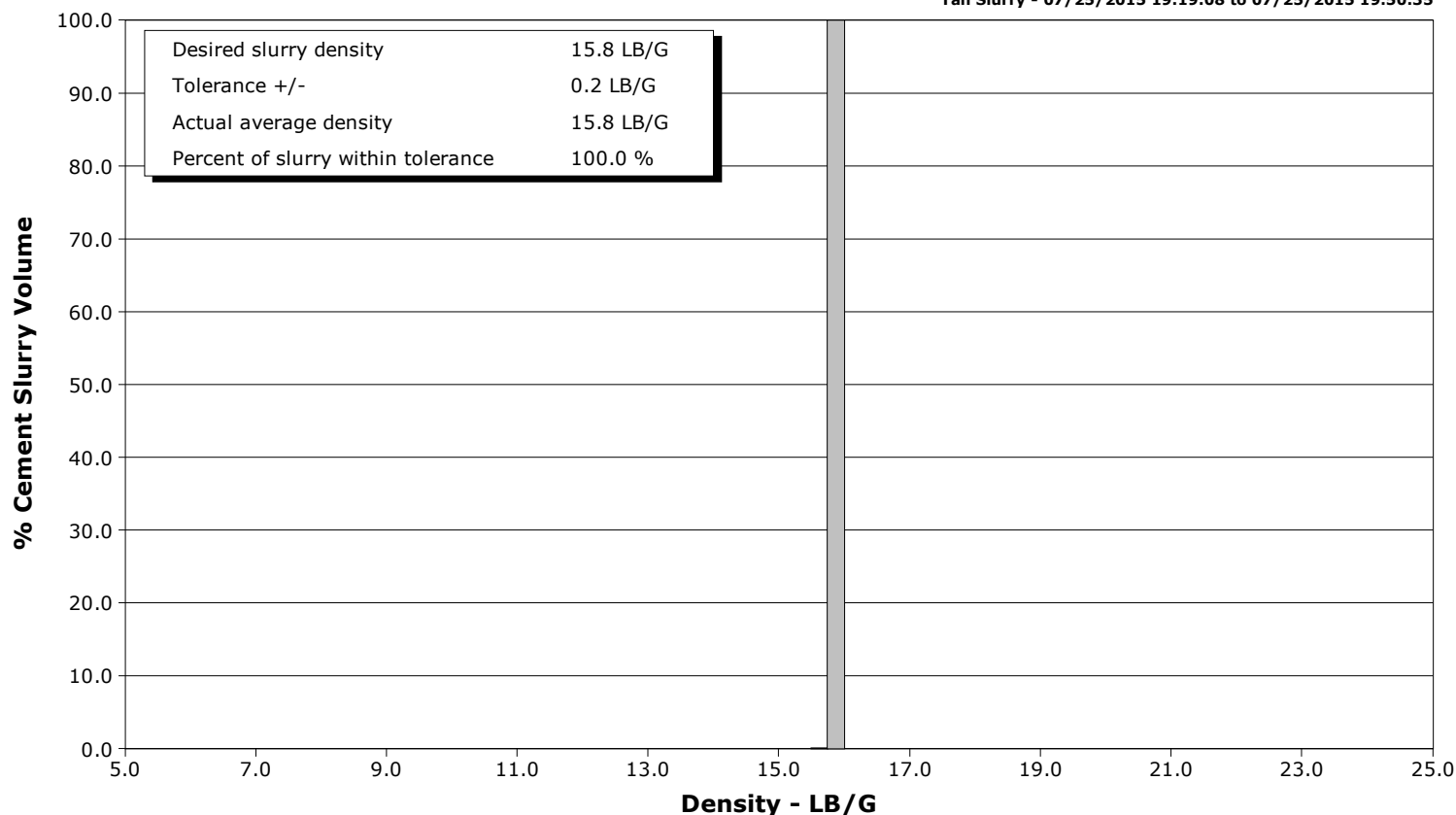
**Well** Troudt 6  
**Field** DJ  
**Engineer** Justin Zika/Leiker  
**Country** United States

**Client** Extraction Oil Gas  
**SIR No.** 2166497  
**Job Type** Surface  
**Job Date** 07-25-2015

**Lead Slurry - 07/25/2015 19:19:06 to 07/25/2015 19:19:07**



**Tail Slurry - 07/25/2015 19:19:08 to 07/25/2015 19:50:35**



# Cementing Service Report

				Customer Extraction Oil & Gas			Job Number 2166497	
Well Troud 6 6			Location (legal) Cheyenne,WY			Schlumberger Location CWY		Job Start Jul/25/2015
Field DJ		Formation Name/Type Shale		Deviation deg	Bit Size 13.5 in		Well MD 1535.0 ft	Well TVD ft
County Weld		State/Province Colorado		BHP psi	BHST 100 degF	BHCT 84 degF	Pore Press. Gradient lb/gal	
Well Master 0631646503		API/UWI 0512341436						
Rig Name White Mountain 344	Drilled For Oil		Service Via Land	Casing/Liner				
				Depth, ft	Size, in	Weight, lb/ft	Grade	Thread
Offshore Zone	Well Class New		Well Type Development	1534.0	9.6	36.0	J55	8RD
				0.0	0.0	0.0		
Drilling Fluid Type		Max. Density lb/gal	Plastic Viscosity cP	Tubing/Drill Pipe				
				T/D	Depth, ft	Size, in	Weight, lb/ft	Grade
Service Line Cementing	Job Type Surface							
Max. Allowed Tub. Press 3500 psi	Max. Allowed Ann. Press psi		WH Connection Single Cement head	Perforations/Open Hole				
				Top, ft	Bottom, ft	shot/ft	No. of Shots	Total Interval ft
				ft	ft			
				ft	ft			Diameter in
				ft	ft			
				Treat Down Casing	Displacement 115.3 bbl	Packer Type	Packer Depth ft	
				Tubing Vol. bbl	Casing Vol. 118.5 bbl	Annular Vol. 135.0 bbl	Openhole Vol. 256.0 bbl	
Casing/Tubing Secured <input checked="" type="checkbox"/>	1 Hole Vol. Circulated prior to Cement <input checked="" type="checkbox"/>			Casing Tools			Squeeze Job	
Lift Pressure 759 psi				Shoe Type Float			Squeeze Type	
Pipe Rotated <input type="checkbox"/>	Pipe Reciprocated <input type="checkbox"/>			Shoe Depth 1534.0 ft			Tool Type	
No. Centralizers	Top Plugs 1	Bottom Plugs		Stage Tool Type			Tool Depth ft	
Cement Head Type Single				Stage Tool Depth ft			Tail Pipe Size in	
Job Scheduled For Jul/25/2015 18:00	Arrived on Location Jul/25/2015 18:00	Leave Location Jul/25/2015 22:00		Collar Type Float			Tail Pipe Depth ft	
				Collar Depth 1491.0 ft			Sqz. Total Vol. bbl	
Date	Time 24-hr clock	Treating Pressure PSI	Flow Rate B/M	Density LB/G	Volume BBL	Message		
07/25/2015	18:57:40	-2	0.0	8.32	0.0	Started Acquisition		
07/25/2015	18:57:41	-2	0.0	8.32	0.0	Start Job		
07/25/2015	18:57:42	-1	0.0	8.32	0.0	Rig Up		
07/25/2015	18:57:43	-1	0.0	8.32	0.0	Hold Safety Meeting		
07/25/2015	18:57:46	-1	0.0	8.31	0.0	Pressure Test Lines		
07/25/2015	18:57:50	-1	0.0	8.32	0.0	Low Test		
07/25/2015	18:59:20	-1	0.0	8.32	0.0			
07/25/2015	19:01:00	-1	0.0	8.32	0.0			
07/25/2015	19:02:40	-4	0.0	8.31	0.0			
07/25/2015	19:04:20	5	1.8	8.32	1.7			
07/25/2015	19:06:00	2	0.0	8.32	4.4			
07/25/2015	19:07:40	2200	0.0	8.32	4.5			
07/25/2015	19:09:20	4062	0.0	8.32	4.5			
07/25/2015	19:11:00	-3	0.0	8.32	4.5			
07/25/2015	19:12:40	44	3.2	8.32	7.9			
07/25/2015	19:13:43	47	3.2	8.32	11.3	Start Pumping Spacer		
07/25/2015	19:13:45	47	3.2	8.32	11.4	Pump 20 bbls Of H2O		
07/25/2015	19:13:51	47	3.2	8.32	11.7	Good Returns		
07/25/2015	19:16:00	49	3.2	8.32	18.6			
07/25/2015	19:17:40	159	4.5	15.56	24.4			
07/25/2015	19:19:06	180	4.6	15.74	30.9	Start Mixing Lead Slurry		

Well			Field		Job Start	Customer	Job Number
Troudtt 6 6			DJ		Jul/25/2015	Extraction Oil & Gas	2166497
Date	Time 24-hr clock	Treating Pressure PSI	Flow Rate B/M	Density LB/G	Volume BBL	Message	
07/25/2015	19:19:08	190	4.6	15.74	31.1	Start Mixing Tail Slurry	
07/25/2015	19:19:20	196	4.6	15.78	32.0		
07/25/2015	19:19:34	195	4.6	15.80	33.1	Pump 170 bbls Of 15.8 ppg Cement	
07/25/2015	19:19:35	195	4.6	15.80	33.1	Wet and Dry Samples	
07/25/2015	19:19:36	197	4.6	15.81	33.2	Dry Sample # 009197	
07/25/2015	19:19:37	204	4.6	15.81	33.3	Good Returns	
07/25/2015	19:21:00	192	4.6	15.84	39.6		
07/25/2015	19:22:40	286	5.6	15.89	48.0		
07/25/2015	19:24:20	298	5.6	15.85	57.4		
07/25/2015	19:26:00	292	5.6	15.84	66.7		
07/25/2015	19:27:40	305	5.6	15.78	76.1		
07/25/2015	19:29:20	324	5.6	15.87	85.4		
07/25/2015	19:31:00	274	5.6	15.88	94.8		
07/25/2015	19:32:40	314	5.6	15.86	104.2		
07/25/2015	19:34:20	329	5.6	15.86	113.6		
07/25/2015	19:36:00	282	5.6	15.83	122.9		
07/25/2015	19:37:40	279	5.6	15.84	132.2		
07/25/2015	19:39:20	309	5.6	15.85	141.6		
07/25/2015	19:41:00	276	5.6	15.81	151.0		
07/25/2015	19:42:40	333	5.6	15.86	160.3		
07/25/2015	19:44:20	295	5.6	15.87	169.7		
07/25/2015	19:46:00	113	3.1	15.87	178.5		
07/25/2015	19:47:40	64	2.6	15.84	182.9		
07/25/2015	19:49:20	73	2.7	15.82	187.4		
07/25/2015	19:50:35	-8	0.1	15.95	190.5	End Tail Slurry	
07/25/2015	19:50:36	-7	0.1	15.95	190.5	Drop Top Plug	
07/25/2015	19:50:37	-8	0.0	15.95	190.5	Start Displacement	
07/25/2015	19:51:00	-5	0.0	15.92	190.5		
07/25/2015	19:52:40	-3	0.0	15.87	190.5		
07/25/2015	19:54:20	-2	0.0	15.87	190.6		
07/25/2015	19:56:00	-2	0.0	9.53	190.6		
07/25/2015	19:57:40	84	4.6	8.63	192.0		
07/25/2015	19:59:20	61	4.6	8.62	199.8		
07/25/2015	20:01:00	74	4.7	8.68	207.5		
07/25/2015	20:02:40	64	4.7	8.41	215.4		
07/25/2015	20:04:20	84	4.5	8.79	223.1		
07/25/2015	20:04:57	132	4.5	8.41	225.9	Caught Plug At 30 bbls Away	
07/25/2015	20:06:00	183	4.6	8.34	230.7		
07/25/2015	20:07:40	240	4.5	8.33	238.7		
07/25/2015	20:09:20	294	4.5	8.32	246.3		
07/25/2015	20:11:00	470	6.4	8.32	255.1		
07/25/2015	20:12:40	457	4.5	8.32	264.2		
07/25/2015	20:14:20	493	4.6	8.32	271.7		
07/25/2015	20:16:00	546	4.5	8.32	279.3		
07/25/2015	20:17:40	619	4.5	8.33	286.8		
07/25/2015	20:19:20	725	4.5	8.33	294.4		
07/25/2015	20:21:00	646	2.3	8.33	299.8		
07/25/2015	20:22:40	608	2.3	8.33	303.6		
07/25/2015	20:24:20	646	2.3	8.33	307.3		
07/25/2015	20:25:19	1124	1.3	8.33	309.6	Displace 115 bbls Of H2O	
07/25/2015	20:25:24	1119	0.1	8.33	309.6	Bump Top Plug To 1144 psi	
07/25/2015	20:25:26	1106	0.0	8.33	309.6	Floats Held	
07/25/2015	20:25:27	1128	0.0	8.33	309.6	.5 bbl Back	
07/25/2015	20:25:28	1120	0.0	8.33	309.6	End Job	

Well Troud 6 6			Field DJ		Job Start Jul/25/2015	Customer Extraction Oil & Gas		Job Number 2166497	
Date	Time 24-hr clock	Treating Pressure PSI	Flow Rate B/M	Density LB/G	Volume BBL	Message			
07/25/2015	20:27:40	1118	0.0	8.33	309.7				
07/25/2015	20:29:20	-3	0.0	8.33	309.7				
07/25/2015	20:31:00	-3	0.0	8.33	309.7				

### Post Job Summary

Average Pump Rates, bbl/min					Volume of Fluid Injected, bbl			
Slurry 3.5	N2	Mud	Maximum Rate 9.7	Total Slurry 170.0	Mud 0.0	Spacer 20.0	N2	
Treating Pressure Summary, psi					Breakdown Fluid			
Maximum 4112	Final 720	Average 438	Bump Plug to 1144	Breakdown	Type	Volume bbl	Density lb/gal	
Avg. N2 Percent %	Designed Slurry Volume 170.0 bbl	Displacement 115.0 bbl	Mix Water Temp 76 degF	Cement Circulated to Surface? <input checked="" type="checkbox"/>	Washed Thru Perfs <input type="checkbox"/>	Volume 35.0 bbl	To ft	
Customer or Authorized Representative			Schlumberger Supervisor Justin Zika/Leiker		Circulation Lost <input type="checkbox"/>	Job Completed <input checked="" type="checkbox"/>		
					-	-		