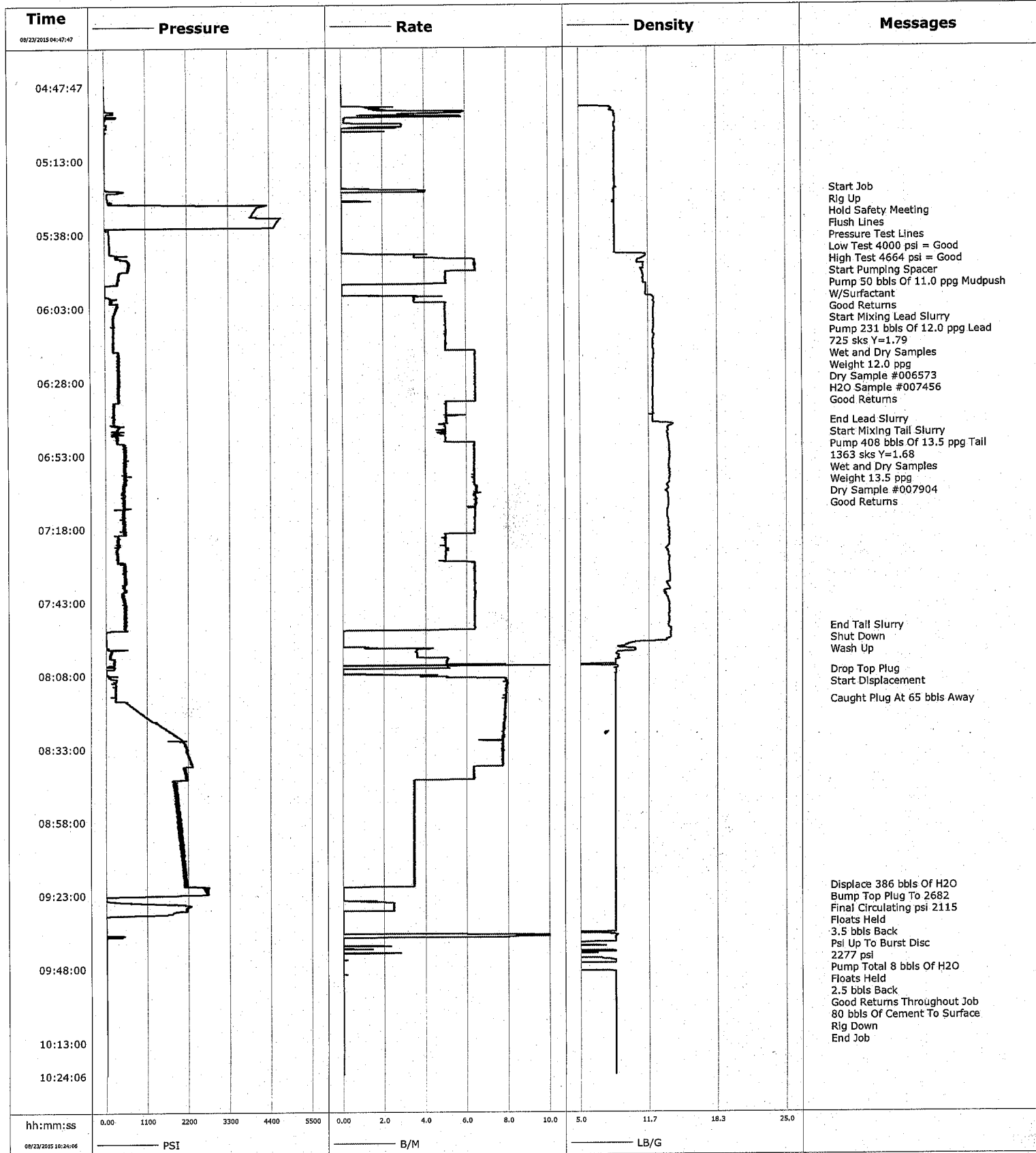
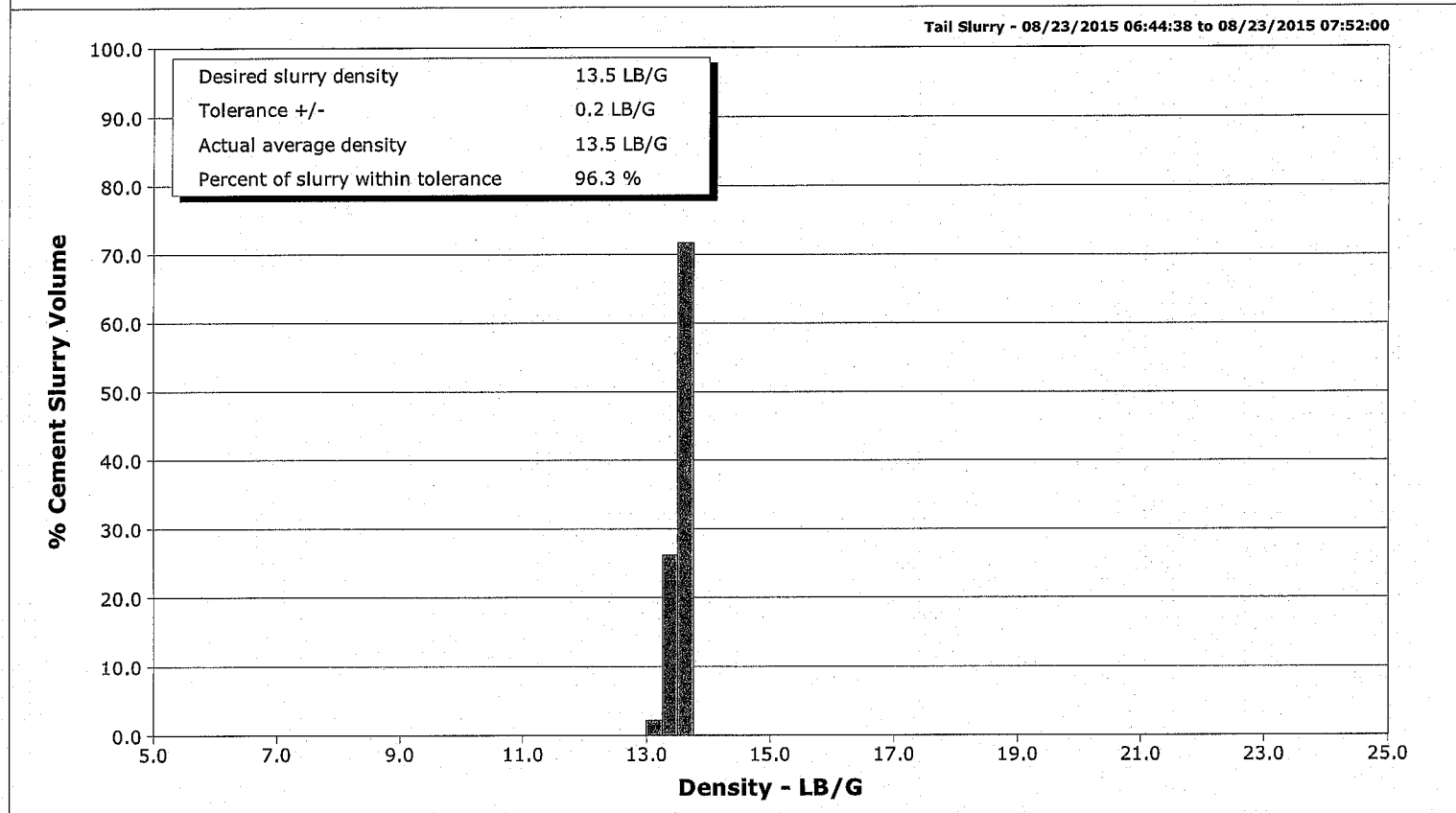
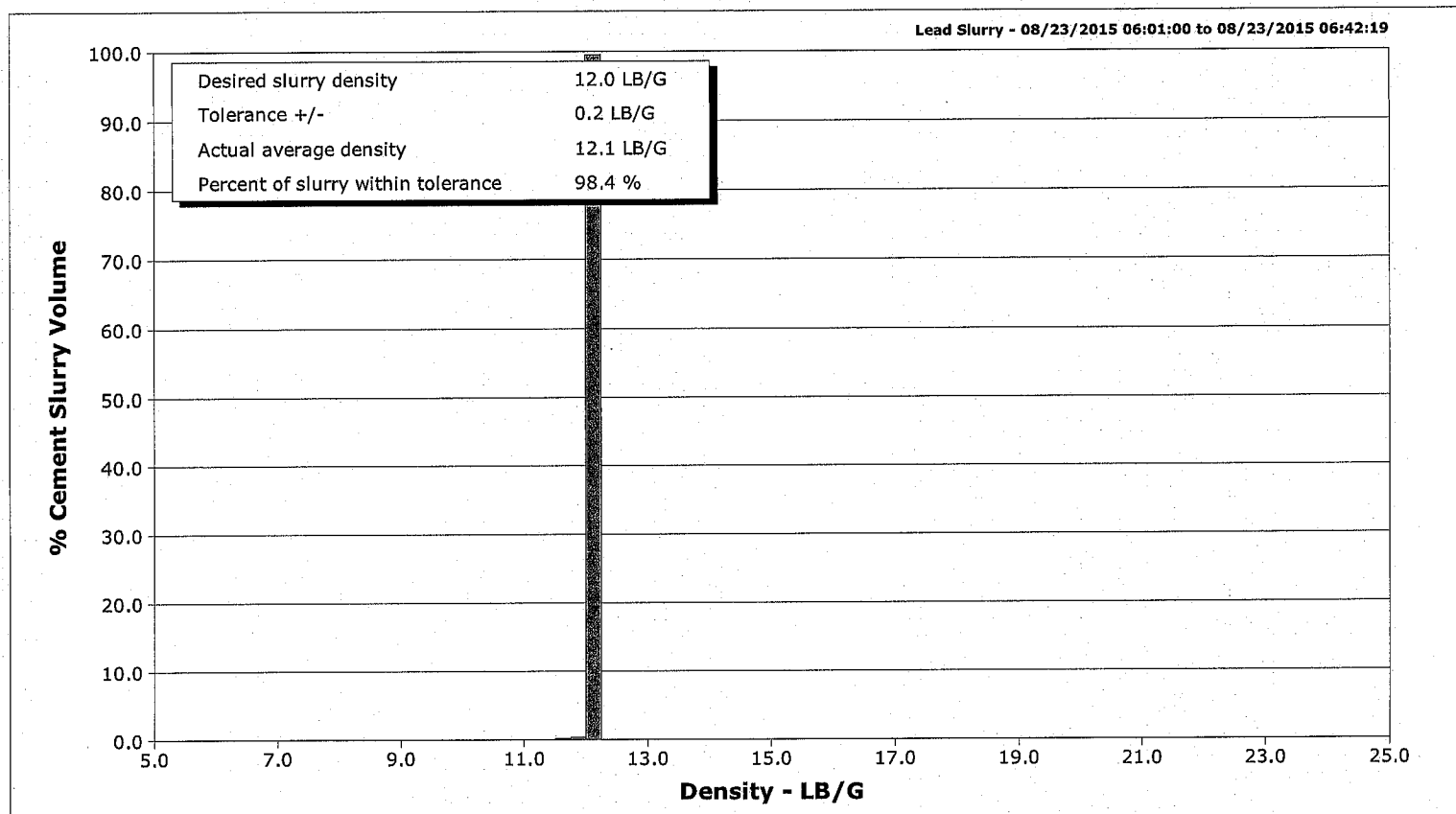


Well	Troudt 5-5	Client	Extraction Oil Gas
Field	Wattenberg	SIR No.	2176031
Engineer	Justin Zika/Baird	Job Type	Monobore
Country	United States	Job Date	08-23-2015



Well	Troudt 5-5	Client	Extraction Oil Gas
Field	Wattenberg	SIR No.	2176031
Engineer	Justin Zika/Baird	Job Type	Monobore
Country	United States	Job Date	08-23-2015



Customer Extraction Oil & Gas				Job Number 2176031			
Well Troudtt 5-5 5-5		Location (legal) Cheyenne,Wy		Schlumberger Location CWY		Job Start Aug/23/2015	
Field Wattenberg		Formation Name/Type Shale		Deviation deg		Bit Size 7.9 in	
County Weld		State/Province Colorado		Well MD 17413.0 ft		Well TVD ft	
Well Master 0631646504		API/UWI 05123414340000		BHP psi		BHST 214 degF	
Rig Name Savanna 802		Drilled For Oil		Service Via Land		BHCT 213 degF	
Offshore Zone		Well Class New		Well Type Development		Pore Press. Gradient lb/gal	
Drilling Fluid Type		Max. Density lb/gal		Plastic Viscosity cP		Casing/Liner	
Service Line Cementing		Job Type Monobore		Depth, ft		Size, in	
Max. Allowed Tub. Press 4500 psi		Max. Allowed Ann. Press psi		WH Connection Single Cement head		Weight, lb/ft	
Service Instructions Rig Up Hold Safety Meeting Flush Lines/Pressure Tes Pump 50 bbls Of 11.0 ppg Mudpush W/Surfactant Pump 231 bbls Of 12.0 ppg Lead Pump 408 bbls Of 13.5 ppg Tail Shut Down/Wash Up Drop Top Plug Displace		Perforations/Open Hole		Grade		Thread	
		Top, ft		Bottom, ft		shot/ft	
		ft		ft		No. of Shots	
		ft		ft		Total Interval ft	
		Treat Down Casing		Displacement 386.0 bbl		Packer Type	
Tubing Vol. bbl		Casing Vol. 386.0 bbl		Annular Vol. 564.0 bbl		Openhole Vol. 976.0 bbl	
Casing/Tubing Secured <input checked="" type="checkbox"/>		1 Hole Vol. Circulated prior to Cement <input checked="" type="checkbox"/>		Casing Tools		Squeeze Job	
Lift Pressure 14658 psi		Pipe Rotated <input type="checkbox"/>		Shoe Type Float		Squeeze Type	
Pipe Reciprocated <input type="checkbox"/>		Pipe Reciprocated <input type="checkbox"/>		Shoe Depth 17413.0 ft		Tool Type	
No. Centralizers		Top Plugs 1		Bottom Plugs		Tool Depth ft	
Cement Head Type Single		Stage Tool Type		Stage Tool Depth ft		Tail Pipe Size in	
Job Scheduled For Aug/23/2015 03:00		Arrived on Location Aug/23/2015 03:00		Leave Location Aug/23/2015 11:00		Collar Type Float	
						Tail Pipe Depth ft	
						Collar Depth 17408.0 ft	
						Sqz. Total Vol. bbl	
Date	Time 24-hr clock	Treating Pressure PSI	Flow Rate B/M	Density LB/G	Volume BBL	Message	
08/23/2015	04:47:47	-0	0.0	0.06	0.0	Started Acquisition	
08/23/2015	04:49:27	-1	0.0	0.06	0.0		
08/23/2015	04:51:07	-1	0.0	0.06	0.0		
08/23/2015	04:52:47	-0	0.0	0.06	0.0		
08/23/2015	04:54:27	0	0.0	0.06	0.0		
08/23/2015	04:56:07	19	1.8	8.07	1.6		
08/23/2015	04:57:47	62	2.9	8.41	8.4		
08/23/2015	04:59:27	15	0.2	8.49	11.9		
08/23/2015	05:01:07	64	2.9	8.41	13.3		
08/23/2015	05:02:47	7	0.0	8.46	16.3		
08/23/2015	05:04:27	5	0.0	8.41	16.4		
08/23/2015	05:06:07	4	0.0	8.42	16.4		
08/23/2015	05:07:47	4	0.0	8.42	16.4		
08/23/2015	05:09:27	4	0.0	8.42	16.4		
08/23/2015	05:11:07	5	0.0	8.42	16.4		
08/23/2015	05:12:47	4	0.0	8.42	16.4		
08/23/2015	05:14:27	4	0.0	8.42	16.4		
08/23/2015	05:16:07	5	0.0	8.43	16.4		
08/23/2015	05:17:47	5	0.0	8.43	16.4		
08/23/2015	05:19:27	2	0.0	8.43	16.4		
08/23/2015	05:21:07	2	0.0	8.43	16.4		

Well			Field		Job Start		Customer	Job Number
Troutd 5-5 5-5			Wattenberg		Aug/23/2015		Extraction Oil & Gas	2176031
Date	Time 24-hr clock	Treating Pressure PST	Flow Rate B/M	Density LB/G	Volume BBL	Message		
08/23/2015	05:23:13	74	1.3	8.43	0.2	Start Job		
08/23/2015	05:24:27	68	0.0	8.41	3.3			
08/23/2015	05:26:07	79	0.0	8.41	3.3			
08/23/2015	05:27:47	106	0.0	8.41	3.6			
08/23/2015	05:27:58	642	0.0	8.24	3.6	Pressure Test Lines		
08/23/2015	05:29:27	4052	0.0	8.41	3.6			
08/23/2015	05:31:07	3957	0.0	8.41	3.6			
08/23/2015	05:32:46	4700	0.0	8.41	3.6	High Test 4664 psi = Good		
08/23/2015	05:32:47	4700	0.0	8.41	3.6			
08/23/2015	05:34:27	4583	0.0	8.41	3.6			
08/23/2015	05:36:07	-22	0.0	8.41	3.6			
08/23/2015	05:37:47	116	0.0	8.41	3.6			
08/23/2015	05:39:27	128	0.0	8.41	3.6			
08/23/2015	05:41:07	130	0.0	8.41	3.6			
08/23/2015	05:42:47	132	0.0	8.41	3.6			
08/23/2015	05:44:27	133	0.0	8.41	3.6			
08/23/2015	05:45:10	313	2.3	8.71	3.9	Start Pumping Spacer		
08/23/2015	05:46:07	330	3.5	11.37	7.1			
08/23/2015	05:47:47	661	6.4	10.58	16.4			
08/23/2015	05:49:27	622	6.4	11.17	27.1			
08/23/2015	05:51:07	396	5.0	11.03	37.4			
08/23/2015	05:52:47	379	5.0	11.16	45.7			
08/23/2015	05:54:27	357	5.0	11.16	54.1			
08/23/2015	05:56:07	7	0.0	11.42	57.9			
08/23/2015	05:57:47	6	0.0	11.40	57.9			
08/23/2015	05:59:27	114	4.0	11.78	58.8			
08/23/2015	06:01:00	181	3.5	12.14	64.3	Start Mixing Lead Slurry		
08/23/2015	06:01:07	166	3.5	12.12	64.7			
08/23/2015	06:02:47	322	5.0	12.16	72.5			
08/23/2015	06:04:27	263	5.0	12.14	80.8			
08/23/2015	06:06:07	217	5.0	12.14	89.2			
08/23/2015	06:07:47	217	5.0	12.15	97.5			
08/23/2015	06:09:27	221	5.0	12.15	105.9			
08/23/2015	06:11:07	231	5.0	12.14	114.2			
08/23/2015	06:12:47	239	5.0	12.20	122.6			
08/23/2015	06:14:27	219	5.0	12.09	130.9			
08/23/2015	06:16:07	229	5.0	12.09	139.3			
08/23/2015	06:17:47	226	5.0	12.10	147.6			
08/23/2015	06:19:27	348	6.4	12.15	158.2			
08/23/2015	06:21:07	372	6.4	12.10	168.9			
08/23/2015	06:22:47	318	6.4	12.09	179.6			
08/23/2015	06:24:27	352	6.4	12.08	190.3			
08/23/2015	06:26:07	353	6.4	12.08	201.0			
08/23/2015	06:27:47	379	6.4	12.09	211.7			
08/23/2015	06:29:27	340	6.4	12.08	222.4			
08/23/2015	06:31:07	339	6.4	12.05	233.1			
08/23/2015	06:32:47	356	6.4	12.03	243.8			
08/23/2015	06:34:27	361	6.4	12.05	254.5			
08/23/2015	06:36:07	215	5.0	12.08	264.0			
08/23/2015	06:37:47	231	5.0	12.05	272.4			
08/23/2015	06:39:27	223	5.0	12.05	280.7			
08/23/2015	06:41:07	217	5.0	12.04	289.2			
08/23/2015	06:42:19	232	5.0	12.04	295.2	End Lead Slurry		
08/23/2015	06:42:47	217	5.0	12.06	297.5			

Well		Field	Job Start		Customer	Job Number
Troud 5-5 5-5		Wattenberg	Aug/23/2015		Extraction Oil & Gas	2176031
Date	Time 24-hr clock	Treating Pressure PSI	Flow Rate B/M	Density LB/G	Volume BBL	Message
08/23/2015	06:44:38	317	5.0	13.47	306.7	Start Mixing Tail Slurry
08/23/2015	06:46:07	307	5.0	13.40	313.9	
08/23/2015	06:47:47	300	5.0	13.45	322.1	
08/23/2015	06:49:27	532	6.4	13.56	330.8	
08/23/2015	06:51:07	503	6.4	13.59	341.4	
08/23/2015	06:52:47	490	6.4	13.62	352.1	
08/23/2015	06:54:27	546	6.4	13.62	362.7	
08/23/2015	06:56:07	512	6.4	13.60	373.3	
08/23/2015	06:57:47	517	6.4	13.56	383.9	
08/23/2015	06:59:27	516	6.4	13.59	394.5	
08/23/2015	07:01:07	511	6.4	13.67	405.1	
08/23/2015	07:02:47	495	6.4	13.59	415.7	
08/23/2015	07:04:27	463	6.5	13.44	426.4	
08/23/2015	07:06:07	457	6.4	13.23	437.2	
08/23/2015	07:07:47	489	6.4	13.49	447.9	
08/23/2015	07:09:27	516	6.4	13.53	458.6	
08/23/2015	07:11:07	474	6.4	13.53	469.3	
08/23/2015	07:12:47	479	6.4	13.41	479.9	
08/23/2015	07:14:27	482	6.4	13.40	490.6	
08/23/2015	07:16:07	486	6.4	13.49	501.3	
08/23/2015	07:17:47	494	6.4	13.50	511.9	
08/23/2015	07:19:27	492	6.4	13.53	522.5	
08/23/2015	07:21:07	326	5.0	13.62	531.9	
08/23/2015	07:22:47	310	5.0	13.60	540.2	
08/23/2015	07:24:27	326	5.0	13.59	548.5	
08/23/2015	07:26:07	303	5.0	13.42	556.8	
08/23/2015	07:27:47	304	5.0	13.50	565.2	
08/23/2015	07:29:27	328	5.0	13.60	573.5	
08/23/2015	07:31:07	477	6.4	13.53	583.5	
08/23/2015	07:32:47	476	6.4	13.60	594.2	
08/23/2015	07:34:27	549	6.4	13.67	604.8	
08/23/2015	07:36:07	506	6.4	13.68	615.4	
08/23/2015	07:37:47	483	6.4	13.43	626.1	
08/23/2015	07:39:27	534	6.4	13.67	636.7	
08/23/2015	07:41:07	441	6.4	13.18	647.4	
08/23/2015	07:42:47	501	6.4	13.48	658.0	
08/23/2015	07:44:27	490	6.4	13.61	668.7	
08/23/2015	07:46:07	548	6.4	13.62	679.3	
08/23/2015	07:47:47	506	6.4	13.59	689.9	
08/23/2015	07:49:27	551	6.4	13.58	700.6	
08/23/2015	07:51:07	486	6.4	13.57	711.2	
08/23/2015	07:52:00	528	6.4	13.55	716.9	End Tail Slurry
08/23/2015	07:52:47	561	6.4	13.78	721.9	
08/23/2015	07:54:27	10	0.0	13.76	723.3	
08/23/2015	07:56:07	17	0.0	13.56	723.3	
08/23/2015	07:57:47	18	0.0	9.86	723.3	
08/23/2015	07:58:39	35	0.0	9.26	723.3	Wash Up
08/23/2015	07:59:27	123	3.6	10.11	724.7	
08/23/2015	08:01:07	130	3.6	8.51	730.6	
08/23/2015	08:02:47	217	5.1	8.74	737.1	
08/23/2015	08:04:27	205	5.0	8.40	745.5	
08/23/2015	08:06:07	7	0.4	8.39	753.6	
08/23/2015	08:07:00	15	0.0	8.44	753.6	Drop Top Plug
08/23/2015	08:07:47	19	1.1	8.43	753.6	

Well		Field		Job Start		Customer	Job Number
Troutd 5-5 5-5		Wattenberg		Aug/23/2015		Extraction Oil & Gas	2176031
Date	Time 24-hr clock	Treating Pressure PSI	Flow Rate B/M	Density LB/G	Volume BBL	Message	
08/23/2015	08:11:07	251	7.9	8.40	773.5		
08/23/2015	08:12:47	259	7.9	8.40	786.7		
08/23/2015	08:14:27	256	7.9	8.40	799.8		
08/23/2015	08:16:07	257	7.9	8.41	812.9		
08/23/2015	08:16:49	308	7.9	8.40	818.4	Caught Plug At 65 bbls Away	
08/23/2015	08:17:47	595	7.8	8.40	826.0		
08/23/2015	08:19:27	773	7.8	8.40	839.1		
08/23/2015	08:21:07	952	7.8	8.40	852.1		
08/23/2015	08:22:47	1143	7.9	8.40	865.2		
08/23/2015	08:24:27	1368	7.8	8.41	878.2		
08/23/2015	08:26:07	1576	7.8	8.40	891.2		
08/23/2015	08:27:47	1752	7.7	8.41	904.1		
08/23/2015	08:29:27	1960	7.8	8.41	917.0		
08/23/2015	08:31:07	2098	7.8	8.40	929.8		
08/23/2015	08:32:47	2146	7.7	8.41	942.6		
08/23/2015	08:34:27	2159	7.7	8.41	955.5		
08/23/2015	08:36:07	2199	7.7	8.41	968.4		
08/23/2015	08:37:47	2269	7.7	8.41	981.3		
08/23/2015	08:39:27	2114	6.3	8.41	994.0		
08/23/2015	08:41:07	2139	6.3	8.41	1004.5		
08/23/2015	08:42:47	2173	6.3	8.41	1015.1		
08/23/2015	08:44:27	1821	3.4	8.40	1024.2		
08/23/2015	08:46:07	1893	3.4	8.40	1029.9		
08/23/2015	08:47:47	1884	3.4	8.40	1035.6		
08/23/2015	08:49:27	1893	3.5	8.40	1041.4		
08/23/2015	08:51:07	1889	3.5	8.40	1047.1		
08/23/2015	08:52:47	1908	3.4	8.40	1052.9		
08/23/2015	08:54:27	1868	3.4	8.40	1058.6		
08/23/2015	08:56:07	1972	3.4	8.41	1064.3		
08/23/2015	08:57:47	1906	3.4	8.40	1070.1		
08/23/2015	08:59:27	1949	3.4	8.41	1075.8		
08/23/2015	09:01:07	1984	3.4	8.41	1081.5		
08/23/2015	09:02:47	1975	3.4	8.41	1087.3		
08/23/2015	09:04:27	2036	3.4	8.41	1093.0		
08/23/2015	09:06:07	2064	3.4	8.41	1098.7		
08/23/2015	09:07:47	2040	3.4	8.41	1104.5		
08/23/2015	09:09:27	2038	3.4	8.41	1110.2		
08/23/2015	09:11:07	2071	3.4	8.41	1115.9		
08/23/2015	09:12:47	2111	3.4	8.41	1121.7		
08/23/2015	09:14:27	2102	3.4	8.41	1127.4		
08/23/2015	09:16:07	2144	3.4	8.41	1133.1		
08/23/2015	09:17:47	2173	3.4	8.40	1138.8		
08/23/2015	09:19:27	2107	3.4	8.40	1144.6		
08/23/2015	09:20:12	2087	3.4	8.40	1147.1	Displace 386 bbls Of H2O	
08/23/2015	09:21:07	2671	0.0	8.40	1147.9		
08/23/2015	09:22:47	2703	0.0	8.41	1147.9		
08/23/2015	09:24:27	0	0.0	8.41	1147.9		
08/23/2015	09:25:11	103	1.5	8.41	1148.0	Psi Up To Burst Disc	
08/23/2015	09:26:07	1560	2.5	8.40	1149.7		
08/23/2015	09:27:47	2174	2.4	8.40	1153.8		
08/23/2015	09:29:27	1769	0.0	8.41	1155.7		
08/23/2015	09:29:55	982	0.0	8.41	1155.7	Floats Held	
08/23/2015	09:31:07	-1	0.0	8.41	1155.7		
08/23/2015	09:32:47	5	0.0	8.41	1155.7		

Well		Field		Job Start		Customer		Job Number
Troud 5-5 5-5		Wattenberg		Aug/23/2015		Extraction Oil & Gas		2176031
Date	Time 24-hr Clock	Treating Pressure PSI	Flow Rate B/M	Density LB/G	Volume BBL	Message		
08/23/2015	09:36:07	6	0.0	0.09	1155.7			
08/23/2015	09:37:47	16	0.0	8.41	1169.6			
08/23/2015	09:39:27	7	0.0	1.28	1169.6			
08/23/2015	09:41:07	6	0.0	0.01	1169.7			
08/23/2015	09:42:47	6	0.0	0.80	1169.8			
08/23/2015	09:44:27	6	0.0	0.17	1169.8			
08/23/2015	09:46:07	9	0.0	8.40	1169.8			
08/23/2015	09:47:47	5	0.0	0.01	1169.8			
08/23/2015	09:49:27	6	0.0	8.39	1169.8			
08/23/2015	09:51:07	5	0.0	8.40	1169.8			
08/23/2015	09:52:47	5	0.0	8.40	1169.8			
08/23/2015	09:54:27	6	0.0	8.39	1169.8			
08/23/2015	09:56:07	6	0.0	8.40	1169.8			
08/23/2015	09:57:47	6	0.0	8.40	1169.8			
08/23/2015	09:59:27	5	0.0	8.40	1169.8			
08/23/2015	10:01:07	5	0.0	8.40	1169.8			
08/23/2015	10:02:47	5	0.0	8.40	1169.8			
08/23/2015	10:04:27	5	0.0	8.40	1169.8			
08/23/2015	10:06:07	4	0.0	8.41	1169.8			
08/23/2015	10:07:47	4	0.0	8.40	1169.8			
08/23/2015	10:09:27	4	0.0	8.41	1169.8			
08/23/2015	10:11:07	4	0.0	8.41	1169.8			
08/23/2015	10:12:47	5	0.0	8.41	1169.8			
08/23/2015	10:14:27	4	0.0	8.41	1169.8			
08/23/2015	10:16:07	4	0.0	8.41	1169.8			
08/23/2015	10:17:47	4	0.0	8.41	1169.8			
08/23/2015	10:19:27	4	0.0	8.41	1169.8			
08/23/2015	10:21:07	3	0.0	8.41	1169.8			

Post Job Summary

Average Pump Rates, bbl/min					Volume of Fluid Injected, bbl			
Slurry 5.4	N2	Mud	Maximum Rate 22.7	Total Slurry 639.0	Mud 0.0	Spacer 50.0	N2	
Treating Pressure Summary (psi)					Breakdown Fluid			
Maximum 4710	Final 2115	Average 682	Bump Plug to 2682	Breakdown	Type	Volume bbl	Density lb/gal	
Avg. N2 Percent %	Designed Slurry Volume 639.0 bbl		Displacement 386.0 bbl	Mix Water Temp 68 degF	Cement Circulated to Surface? <input checked="" type="checkbox"/>	Volume bbl		
					Washed Thru Perfs <input type="checkbox"/>	To ft		
Customer or Authorized Representative Shawn McIntyre			Schlumberger Supervisor Justin Zika/Baird		Circulation Lost <input type="checkbox"/>	Job Completed <input checked="" type="checkbox"/>		