



# Kerr-McGee Oil & Gas Onshore LP

A subsidiary of Anadarko Petroleum Corporation

1099 18<sup>th</sup> Street  
Denver, CO 80202  
720-929-6000

October 18, 2015

Matt Lepore  
Director, Colorado Oil and Gas Conservation Commission  
Department of Natural Resources  
The Chancery Building  
1120 Lincoln Street, Suite 801  
Denver, CO 80203

Re: **30 Day Certification Letter - 318A.e**  
HIGHLANDS 37N-W9HZ (Doc No. 400882467)  
Township 1 North, Range 66 West  
Section 9: NENE  
Unit Acreage: 240 acres  
Unit Spacing: 1N66W SEC 4: SESE  
1N66W SEC 9: E2E2  
1N66W SEC 16: NENE  
Weld County, Colorado

Dear Director Lepore:

Kerr McGee Oil and Gas Onshore LP ("KMG") hereby certifies that KMG owns one hundred percent (100%) of the leasehold interest in the mineral rights in the proposed spacing unit. KMG hereby respectfully requests approval of this boundary well.

If you have any questions or issues regarding this permit, please contact our office.

Sincerely,

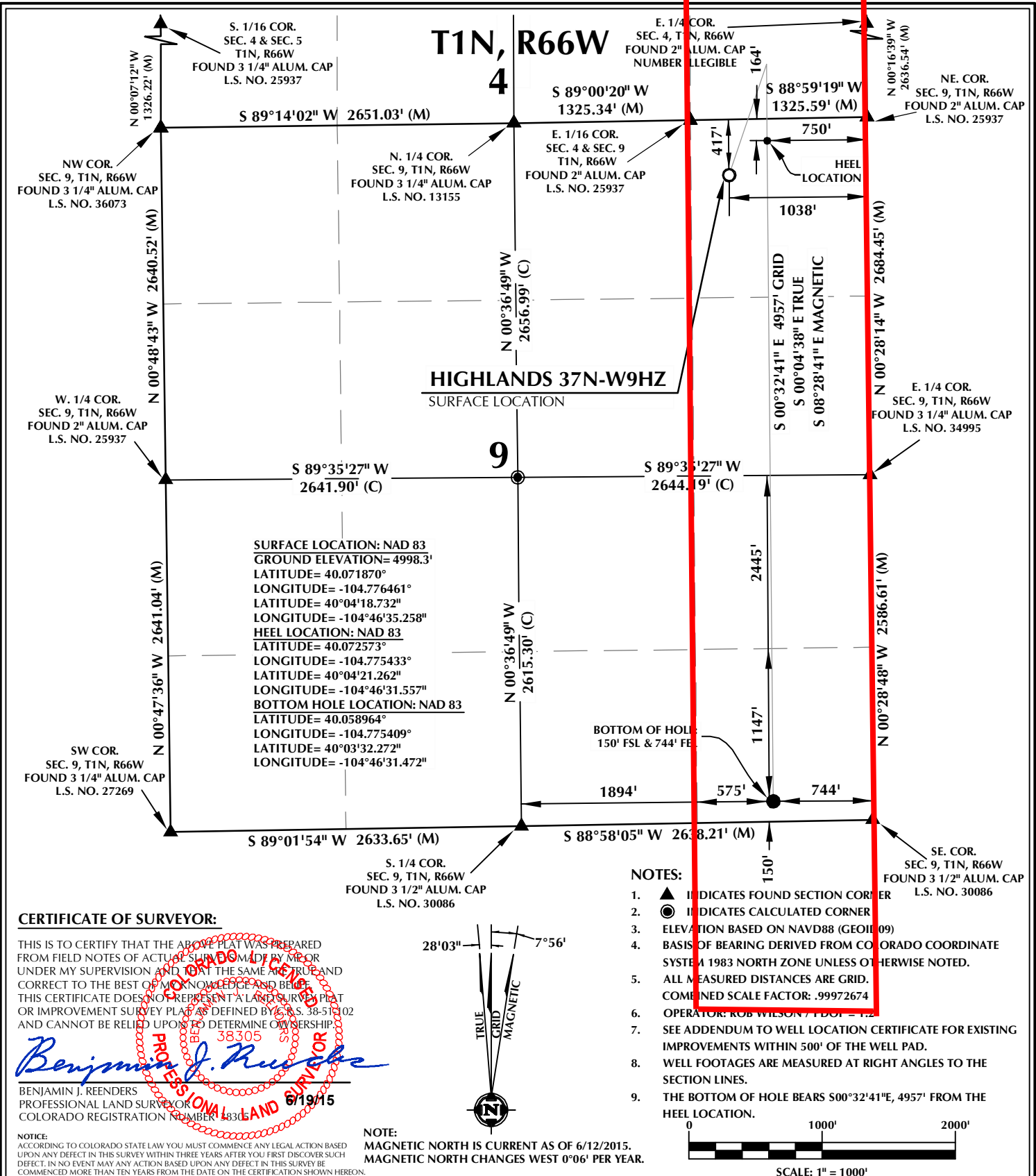
**Kerr-McGee Oil and Gas Onshore LP**

A handwritten signature in blue ink that reads 'RPowers'.

Ronett Powers  
Regulatory Analyst II

Enclosure

# PROPOSED SPACING UNIT



## WELL PAD - HIGHLANDS 27C-33HZ

**HIGHLANDS 37N-W9HZ**  
**WELL LOCATION CERTIFICATE**  
**417' FNL & 1038' FEL NENE (SURFACE)**  
**164' FNL & 750' FEL NENE (HEEL)**  
**150' FSL & 744' FEL SESE (BOTTOM)**  
**LOCATED IN SECTION 9**  
**T1N, R66W, 6TH P.M.**  
**WELD COUNTY, COLORADO**

**Kerr-McGee Oil &  
Gas Onshore L.P.**  
**1099 18th Street**  
**Denver, Colorado 80202**



## CONSULTING, LLC

**SHERIDAN OFFICE**  
1095 Saberton Avenue  
Sheridan, Wyoming 82801  
Phone 307-674-0609

**LOVELAND OFFICE**  
1635 Foxtrail Drive, Suite 204  
Loveland, Colorado 80538  
Phone 970-776-4331

DRAFTED BY:	LMO	CHECKED BY:	BJR
DATE DRAFTED:	6/19/15	DATE SURVEYED:	3/13/15
REVISED:		FILE NAME:	14-116