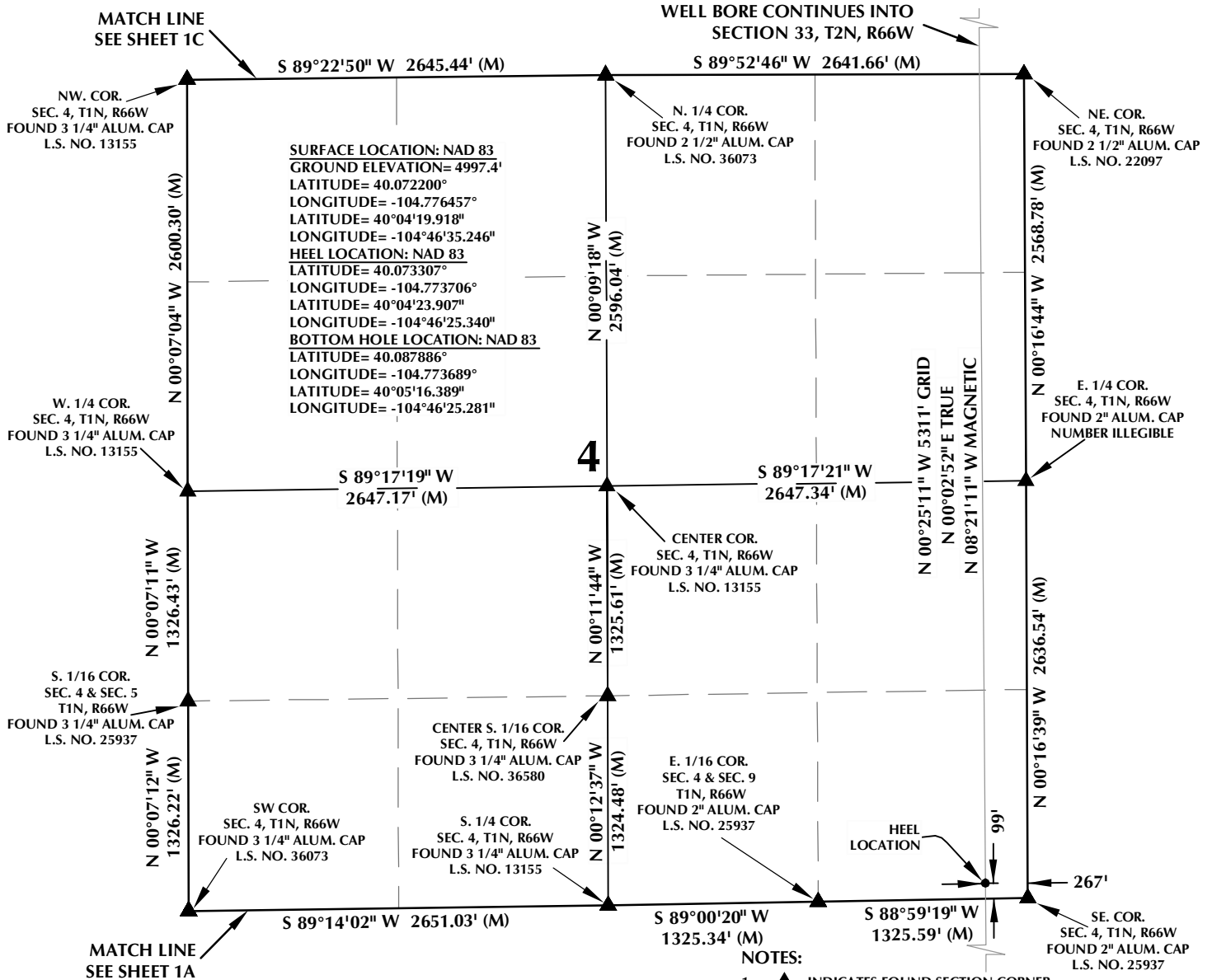


\\ANADARKO\2014\2014_116_HIGHLANDS_SEC_9_T1N_R66W\PLATS\HIGHLANDS 27C-33HZ.dwg, 6/17/2015 3:15:12 PM, lisa

T1N, R66W

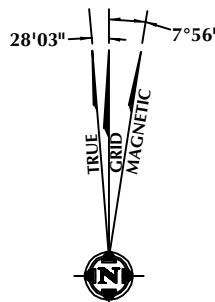


CERTIFICATE OF SURVEYOR:

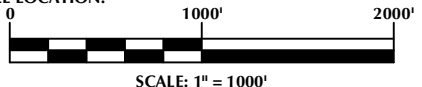
THIS IS TO CERTIFY THAT THE ABOVE PLAT WAS PREPARED FROM FIELD NOTES OF ACTUAL SURVEY MADE BY ME OR UNDER MY SUPERVISION AND THAT THE SAME ARE TRUE AND CORRECT TO THE BEST OF MY KNOWLEDGE AND BELIEF. THIS CERTIFICATE DOES NOT REPRESENT A LAND SURVEY PLAT OR IMPROVEMENT SURVEY PLAT AS DEFINED BY C.S. 38-51-102 AND CANNOT BE RELIED UPON TO DETERMINE OWNERSHIP.

Benjamin J. Reenders
 BENJAMIN J. REENDERS
 PROFESSIONAL LAND SURVEYOR
 COLORADO REGISTRATION NUMBER 4836
 6/19/15

NOTICE:
 ACCORDING TO COLORADO STATE LAW YOU MUST COMMENCE ANY LEGAL ACTION BASED UPON ANY DEFECT IN THIS SURVEY WITHIN THREE YEARS AFTER YOU FIRST DISCOVER SUCH DEFECT. IN NO EVENT MAY ANY ACTION BASED UPON ANY DEFECT IN THIS SURVEY BE COMMENCED MORE THAN TEN YEARS FROM THE DATE ON THE CERTIFICATION SHOWN HEREON.



NOTE:
 MAGNETIC NORTH IS CURRENT AS OF 6/12/2015.
 MAGNETIC NORTH CHANGES WEST 0°06' PER YEAR.



WELL PAD - HIGHLANDS 27C-33HZ

HIGHLANDS 26N-33HZ
 WELL LOCATION CERTIFICATE
 297' FNL & 1037' FEL NENE (SURFACE)
 LOCATED IN SECTION 9
 99' FSL & 267' FEL SESE (HEEL)
 LOCATED IN SECTION 4
 T1N, R66W, 6TH P.M.
 200' FSL & 279' FEL SESE (BOTTOM)
 LOCATED IN SECTION 33
 T2N, R66W, 6TH P.M.
 WELD COUNTY, COLORADO

**Kerr-McGee Oil &
 Gas Onshore L.P.**
 1099 18th Street
 Denver, Colorado 80202



CONSULTING, LLC

SHERIDAN OFFICE
 1095 Saberton Avenue
 Sheridan, Wyoming 82801
 Phone 307-674-0609

LOVELAND OFFICE
 1635 Foxtrail Drive, Suite 204
 Loveland, Colorado 80538
 Phone 970-776-4331

DRAFTED BY:	LMO	CHECKED BY:	BJR	SHEET NO:
DATE DRAFTED:	6/19/15	DATE SURVEYED:	3/13/15	1B
REVISED:		FILE NAME:	14-116	1B OF 1

NW. COR.
SEC. 33, T2N, R66W
FOUND 3 1/4" ALUM. CAP
L.S. NO. 25369

T2N, R66W

S 89°43'13" W 2646.37' (M)

S 89°10'07" W 2640.09' (M)

NE. COR.
SEC. 33, T2N, R66W
FOUND 2 1/2" ALUM. CAP
L.S. NO. 13482

SURFACE LOCATION: NAD 83
GROUND ELEVATION= 4997.4'
LATITUDE= 40.072200°
LONGITUDE= -104.776457°
LATITUDE= 40°04'19.918"
LONGITUDE= -104°46'35.246"
HEEL LOCATION: NAD 83
LATITUDE= 40.073307°
LONGITUDE= -104.773706°
LATITUDE= 40°04'23.907"
LONGITUDE= -104°46'25.340"
BOTTOM HOLE LOCATION: NAD 83
LATITUDE= 40.087886°
LONGITUDE= -104.773689°
LATITUDE= 40°05'16.389"
LONGITUDE= -104°46'25.281"

N. 1/4 COR.
SEC. 33, T2N, R66W
FOUND 3 1/4" ALUM. CAP
L.S. NO. 13258

E. 1/4 COR.
SEC. 33, T2N, R66W
FOUND 2 1/2" ALUM. CAP
ILLEGIBLE

33

S 89°31'48" W
2644.70' (M)

S 89°32'08" W
2642.82' (M)

CENTER COR.
SEC. 33, T2N, R66W
FOUND 2 1/2" ALUM. CAP
L.S. NO. 28656

W. 1/4 COR.
SEC. 33, T2N, R66W
FOUND 2 1/2" ALUM. CAP
ILLEGIBLE

SW. COR.
SEC. 33, T2N, R66W
FOUND 3 1/4" ALUM. CAP
L.S. NO. 13155

MATCH LINE
SEE SHEET 1B

S 89°22'50" W 2645.44' (M)

S 89°52'46" W 2641.66' (M)

S. 1/4 COR.
SEC. 33, T2N, R66W
FOUND 2 1/2" ALUM. CAP
L.S. NO. 36073

BOTTOM OF HOLE:
200' FSL & 279' FEL

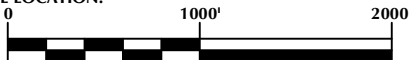
S. 1/16 COR.
SEC. 33 & 34, T2N, R66W
FOUND 3 1/4" ALUM. CAP
L.S. NO. 12330

N 00°35'47" W
1325.47' (M)

SE. COR.
SEC. 33, T2N, R66W
FOUND 2 1/2" ALUM. CAP
L.S. NO. 22097

NOTES:

- ▲ INDICATES FOUND SECTION CORNER
- INDICATES CALCULATED CORNER
- ELEVATION BASED ON NAVD88 (GEOID09)
- BASIS OF BEARING DERIVED FROM COLORADO COORDINATE SYSTEM 1983 NORTH ZONE UNLESS OTHERWISE NOTED.
- ALL MEASURED DISTANCES ARE GRID.
- COMBINED SCALE FACTOR: .99972674
- OPERATOR: ROB WILSON / PDOP = 1.2
- SEE ADDENDUM TO WELL LOCATION CERTIFICATE FOR EXISTING IMPROVEMENTS WITHIN 500' OF THE WELL PAD.
- WELL FOOTAGES ARE MEASURED AT RIGHT ANGLES TO THE SECTION LINES.
- THE BOTTOM OF HOLE BEARS N00°25'11"W, 5311' FROM THE HEEL LOCATION.



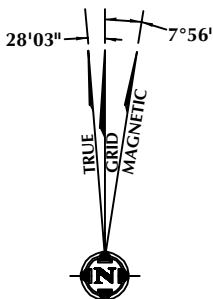
SCALE: 1" = 1000'

CERTIFICATE OF SURVEYOR:

THIS IS TO CERTIFY THAT THE ABOVE PLAT WAS PREPARED FROM FIELD NOTES OF ACTUAL SURVEY MADE BY ME OR UNDER MY SUPERVISION AND THAT THE SAME ARE TRUE AND CORRECT TO THE BEST OF MY KNOWLEDGE AND BELIEF. THIS CERTIFICATE DOES NOT REPRESENT A LAND SURVEY PLAT OR IMPROVEMENT SURVEY PLAT AS DEFINED BY C.S. 38-51-102 AND CANNOT BE RELIED UPON TO DETERMINE OWNERSHIP.

Benjamin J. Reenders
BENJAMIN J. REENDERS
PROFESSIONAL LAND SURVEYOR
COLORADO REGISTRATION NUMBER 48306

NOTICE:
ACCORDING TO COLORADO STATE LAW YOU MUST COMMENCE ANY LEGAL ACTION BASED UPON ANY DEFECT IN THIS SURVEY WITHIN THREE YEARS AFTER YOU FIRST DISCOVER SUCH DEFECT. IN NO EVENT MAY ANY ACTION BASED UPON ANY DEFECT IN THIS SURVEY BE COMMENCED MORE THAN TEN YEARS FROM THE DATE ON THE CERTIFICATION SHOWN HEREON.



NOTE:
MAGNETIC NORTH IS CURRENT AS OF 6/12/2015.
MAGNETIC NORTH CHANGES WEST 0°06' PER YEAR.

WELL PAD - HIGHLANDS 27C-33HZ

HIGHLANDS 26N-33HZ
WELL LOCATION CERTIFICATE
297' FNL & 1037' FEL NENE (SURFACE)
LOCATED IN SECTION 9
99' FSL & 267' FEL SESE (HEEL)
LOCATED IN SECTION 4
T1N, R66W, 6TH P.M.
200' FSL & 279' FEL SESE (BOTTOM)
LOCATED IN SECTION 33
T2N, R66W, 6TH P.M.
WELD COUNTY, COLORADO

**Kerr-McGee Oil &
Gas Onshore L.P.**
1099 18th Street
Denver, Colorado 80202



CONSULTING, LLC

SHERIDAN OFFICE
1095 Saberton Avenue
Sheridan, Wyoming 82801
Phone 307-674-0609

LOVELAND OFFICE
1635 Foxtrail Drive, Suite 204
Loveland, Colorado 80538
Phone 970-776-4331

DRAFTED BY:	LMO	CHECKED BY:	BJR	SHEET NO:
DATE DRAFTED:	6/19/15	DATE SURVEYED:	3/13/15	1C
REVISED:		FILE NAME:	14-116	1C OF 1