



Kerr-McGee Oil & Gas Onshore LP

A subsidiary of Anadarko Petroleum Corporation

1099 18th Street
Denver, CO 80202
720-929-6000

October 18, 2015

Matt Lepore
Director, Colorado Oil and Gas Conservation Commission
Department of Natural Resources
The Chancery Building
1120 Lincoln Street, Suite 801
Denver, CO 80203

Re: **30 Day Certification Letter - 318A.e**
HIGHLANDS 1N-33HZ (Doc No. 400882457)
Township 1 North, Range 66 West
Section 9: NENE
Unit Acreage: 240 acres
Unit Spacing: 1N66W SEC 4: E2E2
1N66W SEC 9: NENE
2N66W SEC 33: SESE
Weld County, Colorado

Dear Director Lepore:

Kerr-McGee Oil and Gas Onshore LP ("KMG") hereby certifies that a thirty (30) day notice has been given by certified mail to all mineral owners in the proposed wellbore spacing unit. KMG received an objection to such well location, proposed spacing unit, or additional producing formation from Encana Oil and Gas (USA) Inc. ("Encana") on August 13, 2015. The objection was withdrawn by Encana on October 6, 2015. The letter acknowledging the withdrawal of this objection is attached to this Proposed Spacing Unit. KMG hereby respectfully requests approval of this boundary well.

If you have any questions or issues regarding this permit, please contact our office.

Sincerely,

Kerr-McGee Oil and Gas Onshore LP

A handwritten signature in blue ink that reads 'R Powers'.

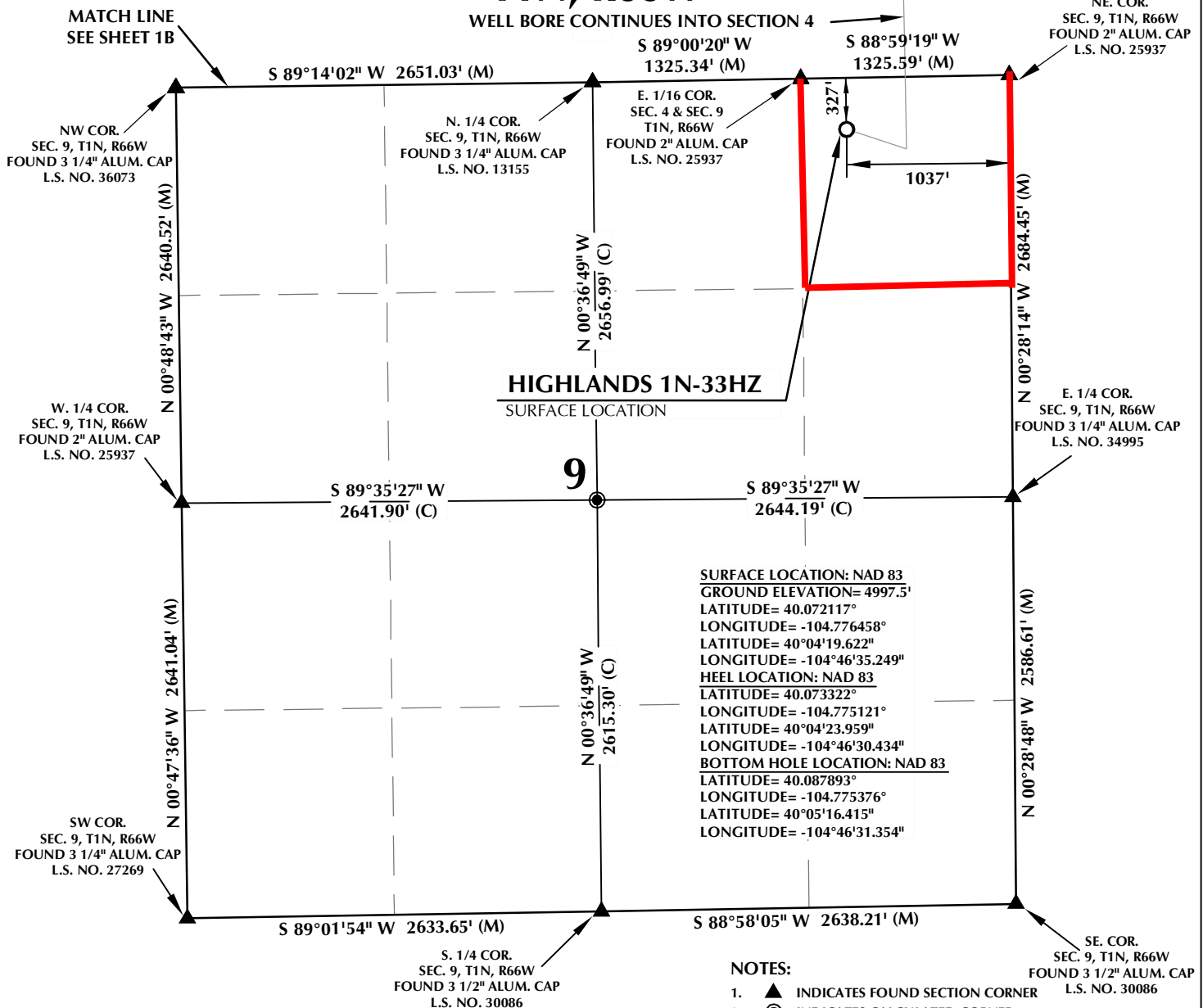
Ronett Powers
Regulatory Analyst II

Enclosure

PROPOSED SPACING UNIT

T1N, R66W

WELL BORE CONTINUES INTO SECTION 4

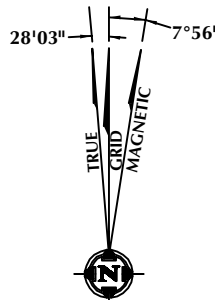


CERTIFICATE OF SURVEYOR:

THIS IS TO CERTIFY THAT THE ABOVE PLAT WAS PREPARED FROM FIELD NOTES OF ACTUAL SURVEY MADE BY ME OR UNDER MY SUPERVISION AND THAT THE SAME ARE TRUE AND CORRECT TO THE BEST OF MY KNOWLEDGE AND BELIEF. THIS CERTIFICATE DOES NOT REPRESENT A LAND SURVEY PLAT OR IMPROVEMENT SURVEY PLAT AS DEFINED BY C.S. 38-51-102 AND CANNOT BE RELIED UPON TO DETERMINE OWNERSHIP.

Benjamin J. Reenders
 BENJAMIN J. REENDERS
 PROFESSIONAL LAND SURVEYOR
 COLORADO REGISTRATION NUMBER 4836
 6/19/15

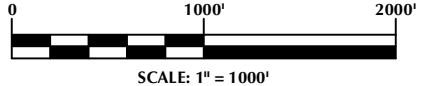
NOTICE:
 ACCORDING TO COLORADO STATE LAW YOU MUST COMMENCE ANY LEGAL ACTION BASED UPON ANY DEFECT IN THIS SURVEY WITHIN THREE YEARS AFTER YOU FIRST DISCOVER SUCH DEFECT. IN NO EVENT MAY ANY ACTION BASED UPON ANY DEFECT IN THIS SURVEY BE COMMENCED MORE THAN TEN YEARS FROM THE DATE ON THE CERTIFICATION SHOWN HEREON.



NOTE:
 MAGNETIC NORTH IS CURRENT AS OF 6/12/2015.
 MAGNETIC NORTH CHANGES WEST 0°06' PER YEAR.

NOTES:

- ▲ INDICATES FOUND SECTION CORNER
- INDICATES CALCULATED CORNER
- ELEVATION BASED ON NAVD88 (GEOID09)
- BASIS OF BEARING DERIVED FROM COLORADO COORDINATE SYSTEM 1983 NORTH ZONE UNLESS OTHERWISE NOTED.
- ALL MEASURED DISTANCES ARE GRID.
- COMBINED SCALE FACTOR: .99972674
- OPERATOR: ROB WILSON / PDOP = 1.2
- SEE ADDENDUM TO WELL LOCATION CERTIFICATE FOR EXISTING IMPROVEMENTS WITHIN 500' OF THE WELL PAD.
- WELL FOOTAGES ARE MEASURED AT RIGHT ANGLES TO THE SECTION LINES.
- THE BOTTOM OF HOLE BEARS N01°14'23"W, 5308' FROM THE HEEL LOCATION.



WELL PAD - HIGHLANDS 27C-33HZ

HIGHLANDS 1N-33HZ
 WELL LOCATION CERTIFICATE
 327' FNL & 1037' FEL NENE (SURFACE)
 LOCATED IN SECTION 9
 108' FSL & 663' FEL SESE (HEEL)
 LOCATED IN SECTION 4
 T1N, R66W, 6TH P.M.
 200' FSL & 751' FEL SESE (BOTTOM)
 LOCATED IN SECTION 33
 T2N, R66W, 6TH P.M.
 WELD COUNTY, COLORADO

**Kerr-McGee Oil &
 Gas Onshore L.P.**
 1099 18th Street
 Denver, Colorado 80202



CONSULTING, LLC

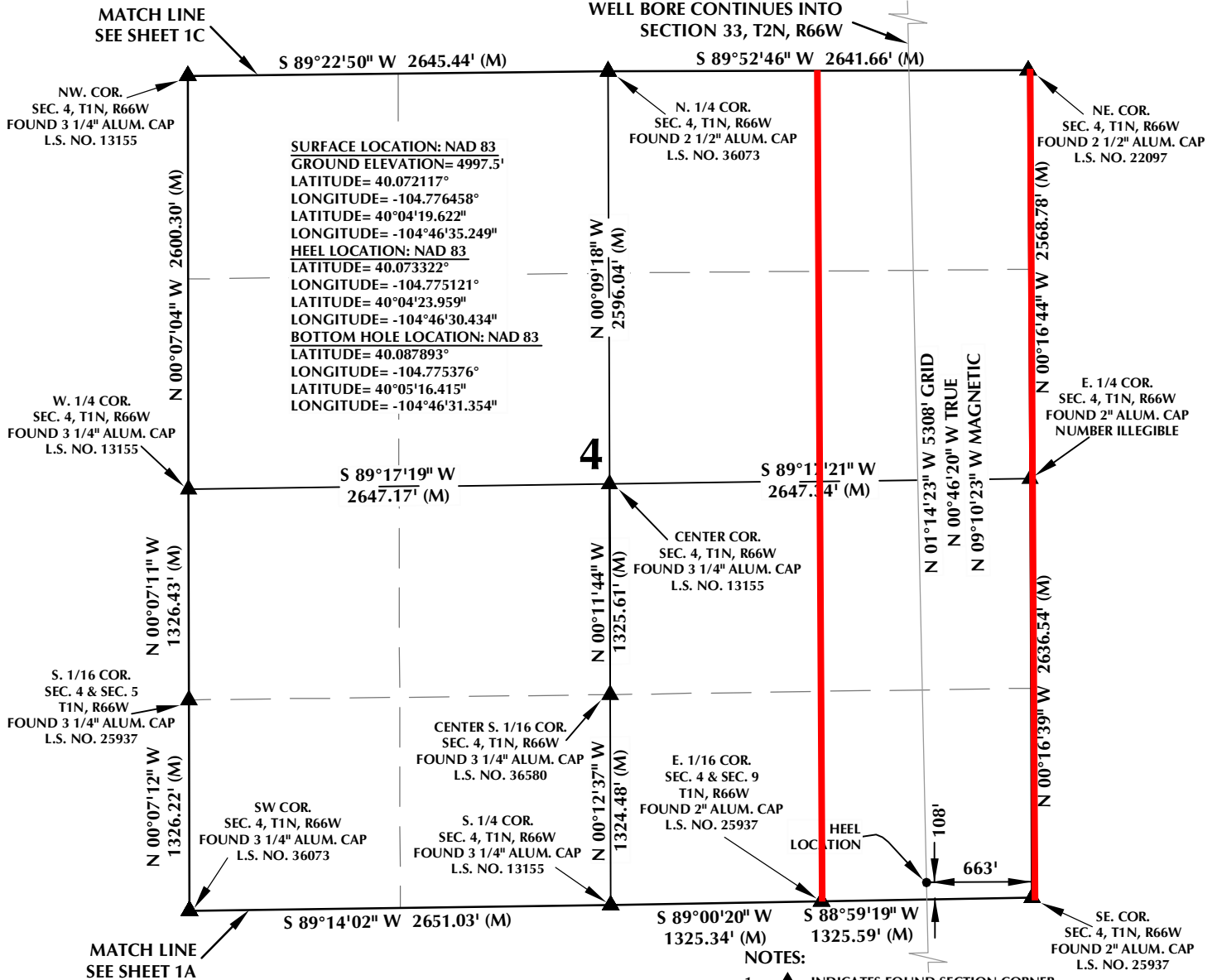
SHERIDAN OFFICE
 1095 Saberton Avenue
 Sheridan, Wyoming 82801
 Phone 307-674-0609

LOVELAND OFFICE
 1635 Foxtrail Drive, Suite 204
 Loveland, Colorado 80538
 Phone 970-776-4331

| | | | | |
|---------------|---------|----------------|---------|-----------|
| DRAFTED BY: | LMO | CHECKED BY: | BJR | SHEET NO: |
| DATE DRAFTED: | 6/19/15 | DATE SURVEYED: | 3/13/15 | 1A |
| REVISED: | | FILE NAME: | 14-116 | 1A OF 1 |

T1N, R66W

WELL BORE CONTINUES INTO
SECTION 33, T2N, R66W

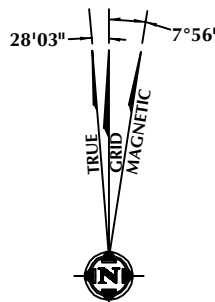


CERTIFICATE OF SURVEYOR:

THIS IS TO CERTIFY THAT THE ABOVE PLAT WAS PREPARED FROM FIELD NOTES OF ACTUAL SURVEY MADE BY ME OR UNDER MY SUPERVISION AND THAT THE SAME ARE TRUE AND CORRECT TO THE BEST OF MY KNOWLEDGE AND BELIEF. THIS CERTIFICATE DOES NOT REPRESENT A LAND SURVEY PLAT OR IMPROVEMENT SURVEY PLAT AS DEFINED BY C.S. 38-513-02 AND CANNOT BE RELIED UPON TO DETERMINE OWNERSHIP.

Benjamin J. Reenders
BENJAMIN J. REENDERS
PROFESSIONAL LAND SURVEYOR
COLORADO REGISTRATION NUMBER 14361

NOTICE:
ACCORDING TO COLORADO STATE LAW YOU MUST COMMENCE ANY LEGAL ACTION BASED UPON ANY DEFECT IN THIS SURVEY WITHIN THREE YEARS AFTER YOU FIRST DISCOVER SUCH DEFECT. IN NO EVENT MAY ANY ACTION BASED UPON ANY DEFECT IN THIS SURVEY BE COMMENCED MORE THAN TEN YEARS FROM THE DATE ON THE CERTIFICATION SHOWN HEREON.



NOTE:
MAGNETIC NORTH IS CURRENT AS OF 6/12/2015.
MAGNETIC NORTH CHANGES WEST 0°06' PER YEAR.

NOTES:

- ▲ INDICATES FOUND SECTION CORNER
- INDICATES CALCULATED CORNER
- ELEVATION BASED ON NAVD88 (GEOID09)
- BASIS OF BEARING DERIVED FROM COLORADO COORDINATE SYSTEM 1983 NORTH ZONE UNLESS OTHERWISE NOTED.
- ALL MEASURED DISTANCES ARE GRID.
- COMBINED SCALE FACTOR: .99972674
- OPERATOR: ROB WILSON / PDOP = 1.2
- SEE ADDENDUM TO WELL LOCATION CERTIFICATE FOR EXISTING IMPROVEMENTS WITHIN 500' OF THE WELL PAD.
- WELL FOOTAGES ARE MEASURED AT RIGHT ANGLES TO THE SECTION LINES.
- THE BOTTOM OF HOLE BEARS N01°14'23"W, 5308' FROM THE HEEL LOCATION.



SCALE: 1" = 1000'

WELL PAD - HIGHLANDS 27C-33HZ

HIGHLANDS 1N-33HZ
WELL LOCATION CERTIFICATE
327' FNL & 1037' FEL NENE (SURFACE)
LOCATED IN SECTION 9
108' FSL & 663' FEL SESE (HEEL)
LOCATED IN SECTION 4
T1N, R66W, 6TH P.M.
200' FSL & 751' FEL SESE (BOTTOM)
LOCATED IN SECTION 33
T2N, R66W, 6TH P.M.
WELD COUNTY, COLORADO

**Kerr-McGee Oil &
Gas Onshore L.P.**
1099 18th Street
Denver, Colorado 80202



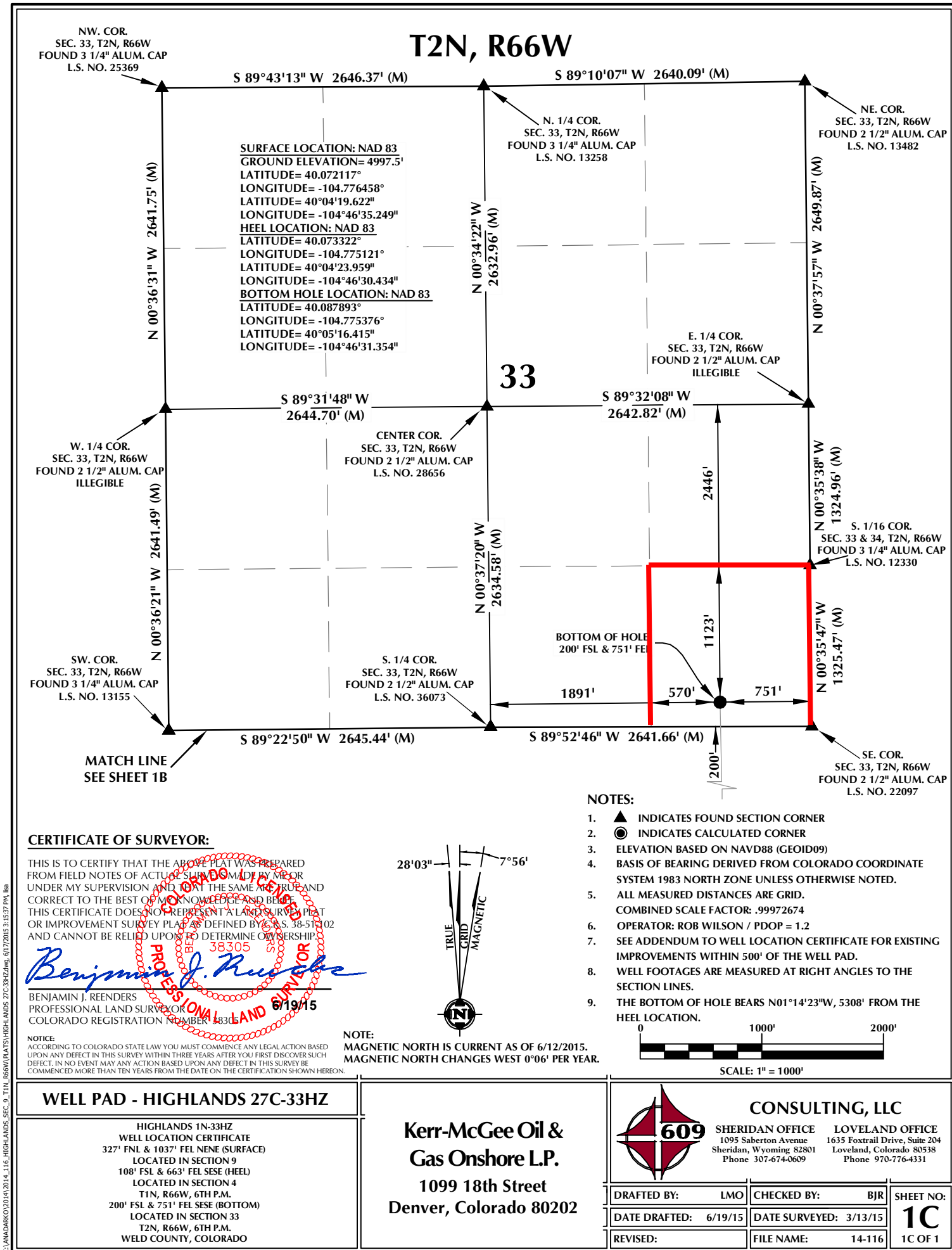
CONSULTING, LLC

SHERIDAN OFFICE
1095 Saberton Avenue
Sheridan, Wyoming 82801
Phone 307-674-0609

LOVELAND OFFICE
1635 Foxtrail Drive, Suite 204
Loveland, Colorado 80538
Phone 970-776-4331

| | | | | |
|---------------|---------|----------------|---------|-----------|
| DRAFTED BY: | LMO | CHECKED BY: | BJR | SHEET NO: |
| DATE DRAFTED: | 6/19/15 | DATE SURVEYED: | 3/13/15 | 1B |
| REVISED: | | FILE NAME: | 14-116 | 1B OF 1 |

PROPOSED SPACING UNIT



K:\ADARKO\2014\2014.116 HIGHLANDS SEC. 9, T1N, R66W\PLATS\HIGHLANDS 27C-33HZ.dwg, 6/17/2015 3:15:37 PM, lra



October 6, 2015

Kerr-McGee Oil & Gas Onshore LP
1099 18th Street, Suite 1800
Denver, CO 80202
Attention: Hannah Becker

RE: Highlands 1N-33HZ, Highlands 2C-33HZ, Highlands 2N-33HZ, Highlands 26C-33HZ,
Highlands 26N-33HZ, Highlands 27C-33HZ, Highlands 27N-33HZ,
Highlands 28N-33HZ
Township 2 North, Range 66 West
Section 9: NENE and NWNE (surface locations)
Weld County, Colorado

Dear Ms. Becker:

On August 13, 2015 Encana Oil & Gas (USA) Inc. ("Encana") filed an objection under COGCC Rule 318A.e.(5)B with Kerr-McGee Oil & Gas Onshore LP and the Colorado Oil and Gas Conservation Commission protesting the 30 Day Notice of proposed drilling and spacing units received by Encana on July 14, 2015 for the above captioned wells.

Encana hereby withdraws the previously filed objection and waives the thirty day written requirement as specified in COGCC Rule 318A.e.(6) for the above captioned wells.

Should you have any questions, please contact me by email at Julia.Foster@encana.com or by telephone at 720.876.5206.

Sincerely yours,

ENCANA OIL & GAS (USA) INC.,
Through its authorized agent,
Encana Services Company, Ltd.

A handwritten signature in blue ink that reads "Julia Foster". The signature is fluid and cursive, with the first name "Julia" being more prominent than the last name "Foster".

Julia Foster
Senior Land Negotiator

cc: Colorado Oil and Gas Conservation Commission
1120 Lincoln Street, Suite 801
Denver, Colorado 80203
Attention: Ms. Jane Stanczyk

Encana Oil & Gas (USA) Inc., acting by and through its authorized agent,
Encana Services Company Ltd.

Republic Plaza 370 17th Street Suite 1700 Denver CO 80202 USA 303.623.2300 encana.com