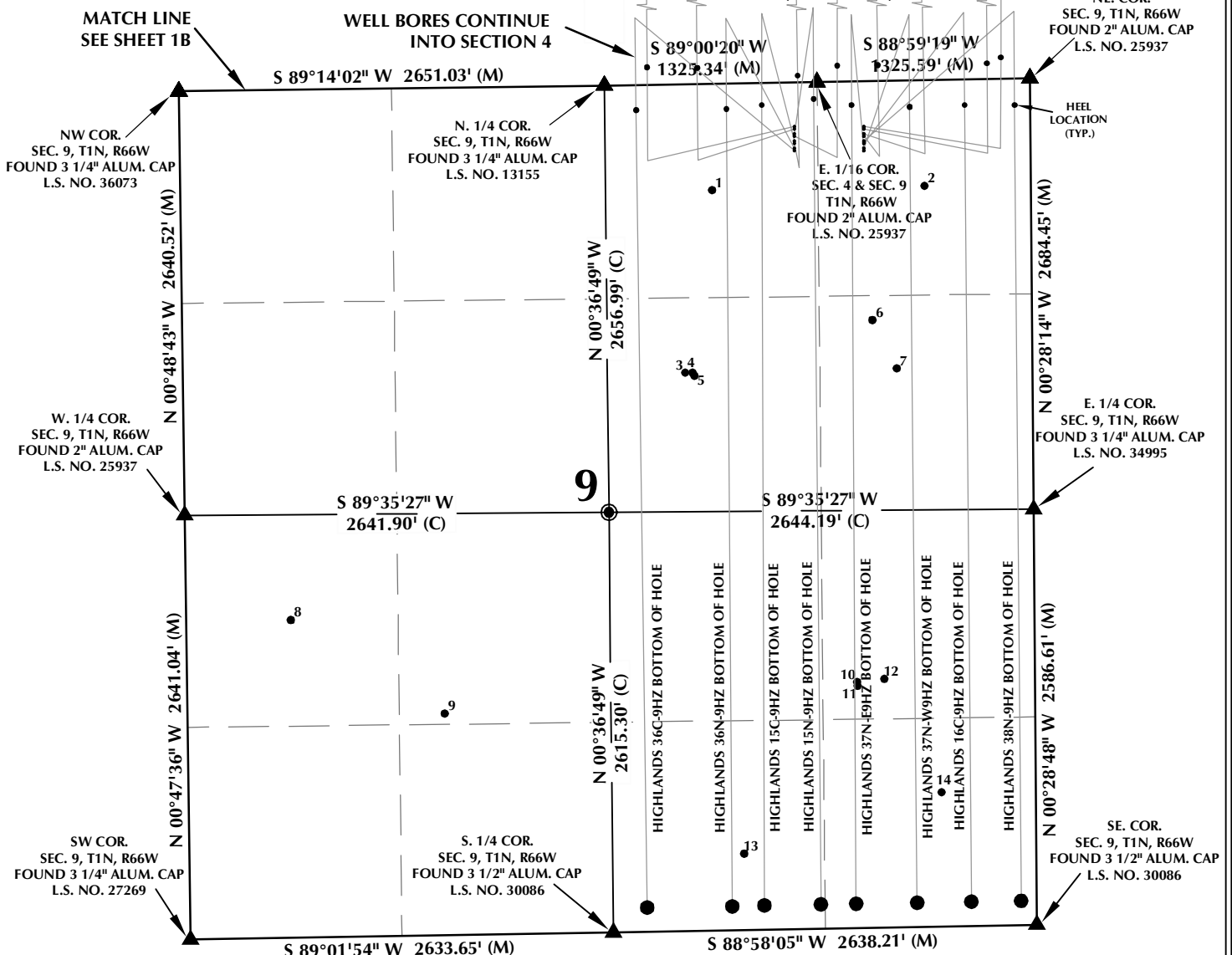


# MULTI-WELL PLAN SECTION 9, T1N, R66W



**WELL NOTES:**

HIGHLANDS 26C-33HZ  
SURFACE: 282' FNL, 1037' FEL  
BOTTOM HOLE: 200' FSL, 131' FEL

HIGHLANDS 26N-33HZ  
SURFACE: 297' FNL, 1037' FEL  
BOTTOM HOLE: 200' FSL, 279' FEL

HIGHLANDS 1N-33HZ  
SURFACE: 327' FNL, 1037' FEL  
BOTTOM HOLE: 200' FSL, 751' FEL

HIGHLANDS 27C-33HZ  
SURFACE: 342' FNL, 1037' FEL  
BOTTOM HOLE: 200' FSL, 1011' FEL

HIGHLANDS 38N-9HZ  
SURFACE: 372' FNL, 1037' FEL  
BOTTOM HOLE: 150' FSL, 96' FEL

HIGHLANDS 16C-9HZ  
SURFACE: 387' FNL, 1037' FEL  
BOTTOM HOLE: 150' FSL, 406' FEL

HIGHLANDS 37N-W9HZ  
SURFACE: 417' FNL, 1038' FEL  
BOTTOM HOLE: 150' FSL, 744' FEL

HIGHLANDS 37N-E9HZ  
SURFACE: 432' FNL, 1038' FEL  
BOTTOM HOLE: 151' FSL, 1124' FEL

HIGHLANDS 28N-33HZ  
SURFACE: 275' FNL, 1469' FEL  
BOTTOM HOLE: 200' FSL, 2392' FEL

HIGHLANDS 2C-33HZ  
SURFACE: 290' FNL, 1469' FEL  
BOTTOM HOLE: 200' FSL, 2087' FEL

HIGHLANDS 15N-9HZ  
SURFACE: 320' FNL, 1469' FEL  
BOTTOM HOLE: 150' FSL, 1344' FEL

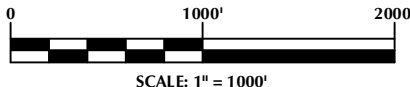
HIGHLANDS 27N-33HZ  
SURFACE: 335' FNL, 1469' FEL  
BOTTOM HOLE: 200' FSL, 1171' FEL

HIGHLANDS 15C-9HZ  
SURFACE: 365' FNL, 1470' FEL  
BOTTOM HOLE: 150' FSL, 1696' FEL

HIGHLANDS 2N-33HZ  
SURFACE: 380' FNL, 1470' FEL  
BOTTOM HOLE: 201' FSL, 1515' FEL

HIGHLANDS 36N-9HZ  
SURFACE: 410' FNL, 1470' FEL  
BOTTOM HOLE: 148' FSL, 1896' FEL

HIGHLANDS 36C-9HZ  
SURFACE: 425' FNL, 1470' FEL  
BOTTOM HOLE: 150' FSL, 2426' FEL



## NOTES:

- ▲ INDICATES FOUND SECTION CORNER
- INDICATES CALCULATED CORNER
- BASIS OF BEARING DERIVED FROM COLORADO COORDINATE SYSTEM 1983 NORTH ZONE UNLESS OTHERWISE NOTED.
- ALL MEASURED DISTANCES ARE GRID.
- COMBINED SCALE FACTOR: .99972674
- WELL FOOTAGES ARE MEASURED AT RIGHT ANGLES TO THE SECTION LINES.

## WELL PAD - HIGHLANDS 27C-33HZ

MULTI-WELL PLAN  
HIGHLANDS 26C-33HZ,  
HIGHLANDS 26N-33HZ, HIGHLANDS 1N-33HZ, HIGHLANDS 27C-33HZ,  
HIGHLANDS 38N-9HZ, HIGHLANDS 16C-9HZ, HIGHLANDS 37N-W9HZ,  
HIGHLANDS 37N-E9HZ, HIGHLANDS 28N-33HZ, HIGHLANDS 2C-33HZ,  
HIGHLANDS 15N-9HZ, HIGHLANDS 27N-33HZ, HIGHLANDS 15C-9HZ,  
HIGHLANDS 2N-33HZ, HIGHLANDS 36N-9HZ & HIGHLANDS 36C-9HZ  
LOCATED IN SECTION 33, T2N, R66W, 6TH P.M.  
LOCATED IN SECTIONS 4 & 9, T1N, R66W, 6TH P.M.  
WELD COUNTY, COLORADO

**Kerr-McGee Oil &  
Gas Onshore L.P.**

1099 18th Street  
Denver, Colorado 80202



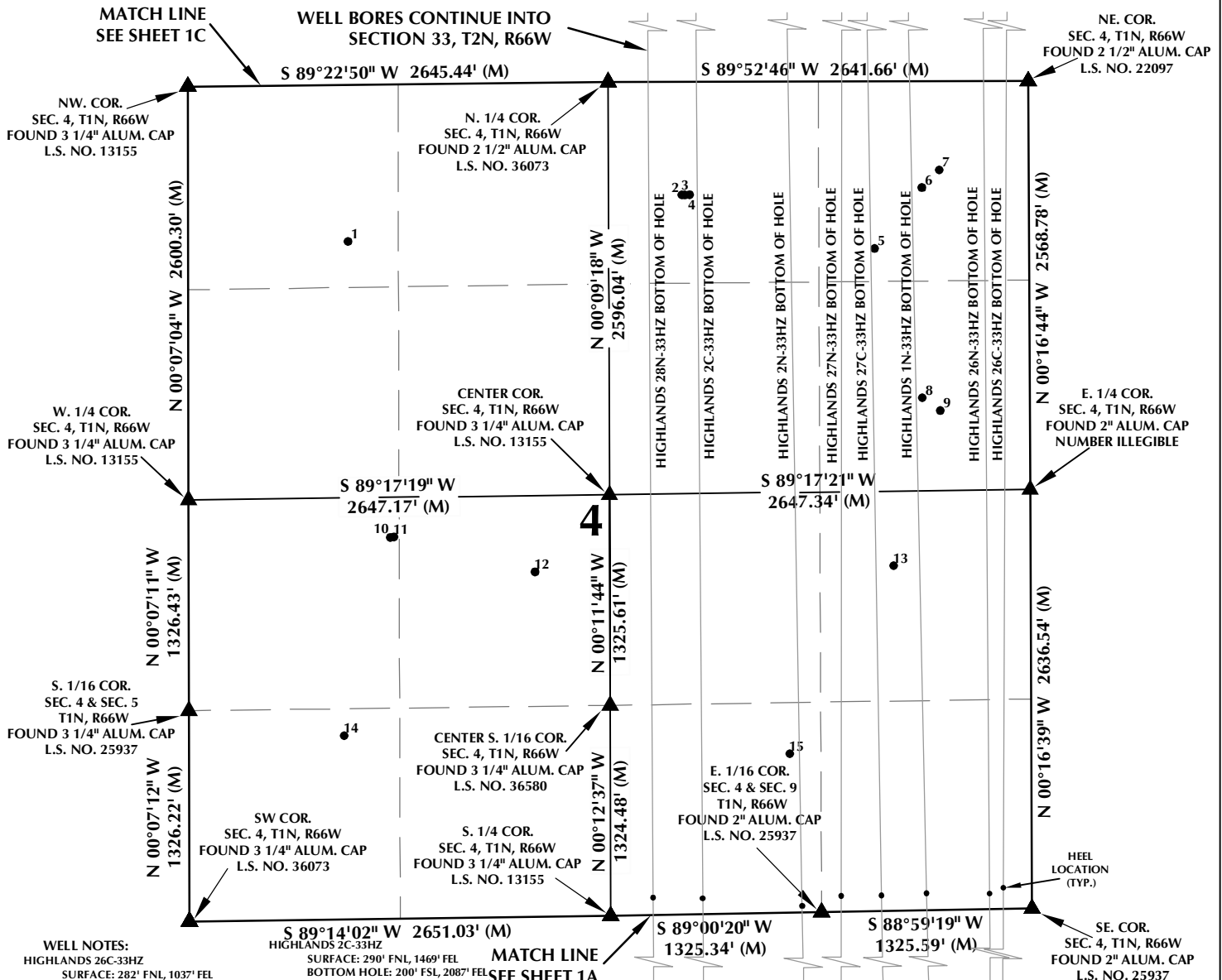
## CONSULTING, LLC

SHERIDAN OFFICE  
1095 Saberton Avenue  
Sheridan, Wyoming 82801  
Phone 307-674-0609

LOVELAND OFFICE  
1635 Foxtrail Drive, Suite 204  
Loveland, Colorado 80538  
Phone 970-776-4331

DRAFTED BY:	LMO	CHECKED BY:	JID	SHEET NO:
DATE DRAFTED:	6/19/15	DATE SURVEYED:	3/13/15	1A
REVISED:	9/22/15	FILE NAME:	14-116	1A OF 2

# MULTI-WELL PLAN SECTION 4, T1N, R66W



**WELL NOTES:**

HIGHLANDS 26C-33HZ  
SURFACE: 282' FNL, 1037' FEL  
BOTTOM HOLE: 200' FSL, 131' FEL

HIGHLANDS 26N-33HZ  
SURFACE: 297' FNL, 1037' FEL  
BOTTOM HOLE: 200' FSL, 279' FEL

HIGHLANDS 1N-33HZ  
SURFACE: 327' FNL, 1037' FEL  
BOTTOM HOLE: 200' FSL, 751' FEL

HIGHLANDS 27C-33HZ  
SURFACE: 342' FNL, 1037' FEL  
BOTTOM HOLE: 200' FSL, 1011' FEL

HIGHLANDS 38N-9HZ  
SURFACE: 372' FNL, 1037' FEL  
BOTTOM HOLE: 150' FSL, 96' FEL

HIGHLANDS 16C-9HZ  
SURFACE: 387' FNL, 1037' FEL  
BOTTOM HOLE: 150' FSL, 406' FEL

HIGHLANDS 37N-W9HZ  
SURFACE: 417' FNL, 1038' FEL  
BOTTOM HOLE: 150' FSL, 744' FEL

HIGHLANDS 37N-E9HZ  
SURFACE: 432' FNL, 1038' FEL  
BOTTOM HOLE: 151' FSL, 1124' FEL

HIGHLANDS 28N-33HZ  
SURFACE: 275' FNL, 1469' FEL  
BOTTOM HOLE: 200' FSL, 2392' FEL

HIGHLANDS 2C-33HZ  
SURFACE: 290' FNL, 1469' FEL  
BOTTOM HOLE: 200' FSL, 2087' FEL

HIGHLANDS 15N-9HZ  
SURFACE: 320' FNL, 1469' FEL  
BOTTOM HOLE: 150' FSL, 1344' FEL

HIGHLANDS 27N-33HZ  
SURFACE: 335' FNL, 1469' FEL  
BOTTOM HOLE: 200' FSL, 1171' FEL

HIGHLANDS 15C-9HZ  
SURFACE: 365' FNL, 1470' FEL  
BOTTOM HOLE: 150' FSL, 1696' FEL

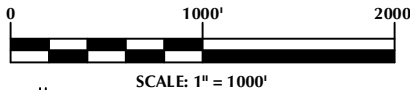
HIGHLANDS 2N-33HZ  
SURFACE: 380' FNL, 1470' FEL  
BOTTOM HOLE: 201' FSL, 1515' FEL

HIGHLANDS 36N-9HZ  
SURFACE: 410' FNL, 1470' FEL  
BOTTOM HOLE: 148' FSL, 1896' FEL

HIGHLANDS 36C-9HZ  
SURFACE: 425' FNL, 1470' FEL  
BOTTOM HOLE: 150' FSL, 2426' FEL

## NOTES:

- ▲ INDICATES FOUND SECTION CORNER
- INDICATES CALCULATED CORNER
- BASIS OF BEARING DERIVED FROM COLORADO COORDINATE SYSTEM 1983 NORTH ZONE UNLESS OTHERWISE NOTED.
- ALL MEASURED DISTANCES ARE GRID.
- COMBINED SCALE FACTOR: .99972674
- WELL FOOTAGES ARE MEASURED AT RIGHT ANGLES TO THE SECTION LINES.



## WELL PAD - HIGHLANDS 27C-33HZ

MULTI-WELL PLAN  
HIGHLANDS 26C-33HZ,  
HIGHLANDS 26N-33HZ, HIGHLANDS 1N-33HZ, HIGHLANDS 27C-33HZ,  
HIGHLANDS 38N-9HZ, HIGHLANDS 16C-9HZ, HIGHLANDS 37N-W9HZ,  
HIGHLANDS 37N-E9HZ, HIGHLANDS 28N-33HZ, HIGHLANDS 2C-33HZ,  
HIGHLANDS 15N-9HZ, HIGHLANDS 27N-33HZ, HIGHLANDS 15C-9HZ,  
HIGHLANDS 2N-33HZ, HIGHLANDS 36N-9HZ & HIGHLANDS 36C-9HZ  
LOCATED IN SECTION 33, T2N, R66W, 6TH P.M.  
LOCATED IN SECTIONS 4 & 9, T1N, R66W, 6TH P.M.  
WELD COUNTY, COLORADO

**Kerr-McGee Oil &  
Gas Onshore L.P.**

1099 18th Street  
Denver, Colorado 80202



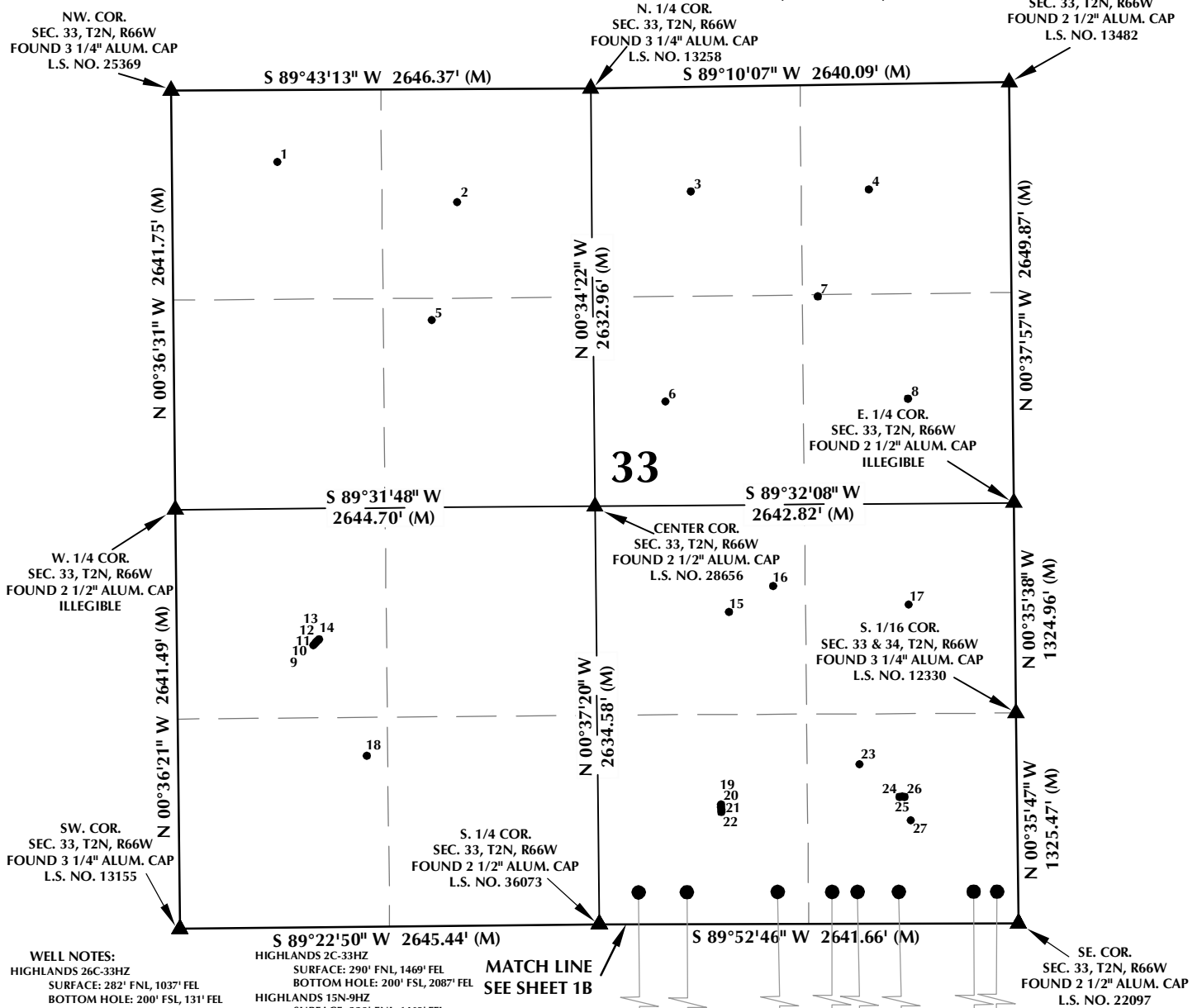
## CONSULTING, LLC

**SHERIDAN OFFICE**  
1095 Saberton Avenue  
Sheridan, Wyoming 82801  
Phone 307-674-0609

**LOVELAND OFFICE**  
1635 Foxtrail Drive, Suite 204  
Loveland, Colorado 80538  
Phone 970-776-4331

DRAFTED BY:	LMO	CHECKED BY:	JID	SHEET NO:
DATE DRAFTED:	6/19/15	DATE SURVEYED:	3/13/15	<b>1B</b>
REVISED:	9/22/15	FILE NAME:	14-116	1B OF 2

# MULTI-WELL PLAN SECTION 33, T2N, R66W



**WELL NOTES:**

HIGHLANDS 26C-33HZ  
SURFACE: 282' FNL, 1037' FEL  
BOTTOM HOLE: 200' FSL, 131' FEL

HIGHLANDS 26N-33HZ  
SURFACE: 297' FNL, 1037' FEL  
BOTTOM HOLE: 200' FSL, 279' FEL

HIGHLANDS 1N-33HZ  
SURFACE: 327' FNL, 1037' FEL  
BOTTOM HOLE: 200' FSL, 751' FEL

HIGHLANDS 27C-33HZ  
SURFACE: 342' FNL, 1037' FEL  
BOTTOM HOLE: 200' FSL, 1011' FEL

HIGHLANDS 38N-9HZ  
SURFACE: 372' FNL, 1037' FEL  
BOTTOM HOLE: 150' FSL, 96' FEL

HIGHLANDS 16C-9HZ  
SURFACE: 387' FNL, 1037' FEL  
BOTTOM HOLE: 150' FSL, 406' FEL

HIGHLANDS 37N-W9HZ  
SURFACE: 417' FNL, 1038' FEL  
BOTTOM HOLE: 150' FSL, 744' FEL

HIGHLANDS 37N-E9HZ  
SURFACE: 432' FNL, 1038' FEL  
BOTTOM HOLE: 151' FSL, 1124' FEL

HIGHLANDS 28N-33HZ  
SURFACE: 275' FNL, 1469' FEL  
BOTTOM HOLE: 200' FSL, 2392' FEL

HIGHLANDS 2C-33HZ  
SURFACE: 290' FNL, 1469' FEL  
BOTTOM HOLE: 200' FSL, 2087' FEL

HIGHLANDS 15N-9HZ  
SURFACE: 320' FNL, 1469' FEL  
BOTTOM HOLE: 150' FSL, 1344' FEL

HIGHLANDS 27N-33HZ  
SURFACE: 335' FNL, 1469' FEL  
BOTTOM HOLE: 200' FSL, 1171' FEL

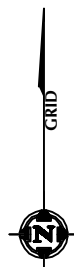
HIGHLANDS 15C-9HZ  
SURFACE: 365' FNL, 1470' FEL  
BOTTOM HOLE: 150' FSL, 1696' FEL

HIGHLANDS 2N-33HZ  
SURFACE: 380' FNL, 1470' FEL  
BOTTOM HOLE: 201' FSL, 1515' FEL

HIGHLANDS 36N-9HZ  
SURFACE: 410' FNL, 1470' FEL  
BOTTOM HOLE: 148' FSL, 1896' FEL

HIGHLANDS 36C-9HZ  
SURFACE: 425' FNL, 1470' FEL  
BOTTOM HOLE: 150' FSL, 2426' FEL

MATCH LINE  
SEE SHEET 1B



SCALE: 1" = 1000'

## NOTES:

- INDICATES FOUND SECTION CORNER
- INDICATES CALCULATED CORNER
- BASIS OF BEARING DERIVED FROM COLORADO COORDINATE SYSTEM 1983 NORTH ZONE UNLESS OTHERWISE NOTED.
- ALL MEASURED DISTANCES ARE GRID. COMBINED SCALE FACTOR: .99972674
- WELL FOOTAGES ARE MEASURED AT RIGHT ANGLES TO THE SECTION LINES.

## WELL PAD - HIGHLANDS 27C-33HZ

MULTI-WELL PLAN  
HIGHLANDS 26C-33HZ,  
HIGHLANDS 26N-33HZ, HIGHLANDS 1N-33HZ, HIGHLANDS 27C-33HZ,  
HIGHLANDS 38N-9HZ, HIGHLANDS 16C-9HZ, HIGHLANDS 37N-W9HZ,  
HIGHLANDS 37N-E9HZ, HIGHLANDS 28N-33HZ, HIGHLANDS 2C-33HZ,  
HIGHLANDS 15N-9HZ, HIGHLANDS 27N-33HZ, HIGHLANDS 15C-9HZ,  
HIGHLANDS 2N-33HZ, HIGHLANDS 36N-9HZ & HIGHLANDS 36C-9HZ  
LOCATED IN SECTION 33, T2N, R66W, 6TH P.M.  
LOCATED IN SECTIONS 4 & 9, T1N, R66W, 6TH P.M.  
WELD COUNTY, COLORADO

**Kerr-McGee Oil &  
Gas Onshore L.P.**  
1099 18th Street  
Denver, Colorado 80202



## CONSULTING, LLC

SHERIDAN OFFICE  
1095 Saberton Avenue  
Sheridan, Wyoming 82801  
Phone 307-674-0609

LOVELAND OFFICE  
1635 Foxtrail Drive, Suite 204  
Loveland, Colorado 80538  
Phone 970-776-4331

DRAFTED BY:	LMO	CHECKED BY:	JID	SHEET NO:
DATE DRAFTED:	6/19/15	DATE SURVEYED:	3/13/15	1C
REVISED:	9/22/15	FILE NAME:	14-116	1C OF 2

# MULTI-WELL PLAN

## SECTION 9, T1N, R66W

NUMBER	WELL NAME	API NUMBER	LATITUDE (NAD 83)	LONGITUDE (NAD 83)	SURFACE ELEVATION	TOTAL DEPTH
1	FT LUPTON HIGHLANDS 31-9	05-123-23765	40.071175	-104.779843	4998.0	8112
2	FT. LUPTON HIGHLANDS 41-9	05-123-22626	40.071217	-104.775117	5004.1	8042
3	FT LUPTON HIGHLANDS 32-9	05-123-23820	40.068057	-104.780479	5021.9	8125
4	FT LUPTON HIGHLANDS USX WW 09-18D	05-123-30593	40.068057	-104.780316	5021.6	8284
5	FT LUPTON HIGHLANDS USX WW 09-22D	05-123-30596	40.068000	-104.780271	5022.6	8248
6	FT. LUPTON HIGHLANDS-USX WW 9-8	05-123-14600	40.068931	-104.776305	5021.7	8176
7	FT LUPTON HIGHLANDS 42-9	05-123-23865	40.068102	-104.775767	5030.9	8115
8	AVEY 31-9	05-123-25957	40.063882	-104.789295	4991.2	8050
9	LEONARD AVEY ET AL 1	05-123-10643	40.062262	-104.785891	5002.4	8100
10	KELLER USX WW 09-09D	05-123-29667	40.062748	-104.776706	5035.7	8210
11	KELLER USX WW 09-10D	05-123-29679	40.062678	-104.776700	5035.6	8285
12	KELLER 43-9	05-123-22984	40.062794	-104.776100	5034.4	8188
13	Nelson 34-09	05-123-23883	40.059829	-104.779251	5008.9	8099
14	POTMESIL 44--9	05-123-23875	40.060850	-104.774846	5033.0	8131

### NOTES:

- \* INDICATES EXISTING WELLS THAT WERE NOT SURVEYED BUT DERIVED FROM COLORADO OIL AND GAS CONSERVATION COMMISSION (COGCC).

**EXISTING WELL EXHIBIT  
SECTION 9, T1N, R66W, 6TH P.M.  
WELD COUNTY, COLORADO**

**Kerr-McGee Oil &  
Gas Onshore L.P.**  
1099 18th Street  
Denver, Colorado 80202



### CONSULTING, LLC

**SHERIDAN OFFICE**  
1095 Saberton Avenue  
Sheridan, Wyoming 82801  
Phone 307-674-0609

**LOVELAND OFFICE**  
1635 Foxtrail Drive, Suite 204  
Loveland, Colorado 80538  
Phone 970-776-4331

DRAFTED BY:	LMO	CHECKED BY:	BJR	<b>2A</b> SHEET NO: 2A OF 2
DATE DRAFTED:	6/19/15	DATE SURVEYED:	3/13/15	
REVISED:		FILE NAME:	14-116	

# MULTI-WELL PLAN

## SECTION 4, T1N, R66W

NUMBER	WELL NAME	API NUMBER	LATITUDE (NAD 83)	LONGITUDE (NAD 83)	SURFACE ELEVATION	TOTAL DEPTH
1	TWOMBLY 1	05-123-12804	40.084677	-104.788018	4990.3	8085
2	TWOMBLY 21-4	05-123-20826	40.085418	-104.780496	4997.1	8279
3	TWOMBLY 32-4	05-123-21014	40.085412	-104.780435	4997.3	8300
4	TWOMBLY 31-4	05-123-21015	40.085419	-104.780325	4997.5	8138
5	CONNER 1	05-123-08975	40.084461	-104.776174	5000.2	8076
6	*D & H 1	05-123-10038	40.085508	-104.775099	4996.0	4881
7	CONNER 41-4	05-123-21008	40.085809	-104.774706	4998.8	8141
8	*ANDERSON 42-4	05-123-08407	40.081878	-104.775129	5004.0	4948
9	CONNER 42-4	05-123-21024	40.081654	-104.774726	5007.5	8096
10	TWOMBLY 12-4	05-123-20841	40.079542	-104.787113	4972.2	8287
11	TWOMBLY 22-4	05-123-20842	40.079550	-104.787033	4972.6	8280
12	PERRI 11-4A	05-123-20766	40.078928	-104.783866	4970.1	8106
13	FOSTER 9-4A	05-123-20986	40.078984	-104.775805	4999.7	8100
14	ADDIE M. KING GAS UNIT 1	05-123-08357	40.076124	-104.788191	4946.0	8135
15	ADDIE M KING GAS UNIT TRUE 1	05-123-11204	40.075752	-104.778174	4990.9	8106

### NOTES:

- \* INDICATES EXISTING WELLS THAT WERE NOT SURVEYED BUT DERIVED FROM COLORADO OIL AND GAS CONSERVATION COMMISSION (COGCC).

**EXISTING WELL EXHIBIT  
SECTION 4, T1N, R66W, 6TH P.M.  
WELD COUNTY, COLORADO**

**Kerr-McGee Oil &  
Gas Onshore L.P.**  
1099 18th Street  
Denver, Colorado 80202



### CONSULTING, LLC

**SHERIDAN OFFICE**  
1095 Saberton Avenue  
Sheridan, Wyoming 82801  
Phone 307-674-0609

**LOVELAND OFFICE**  
1635 Foxtrail Drive, Suite 204  
Loveland, Colorado 80538  
Phone 970-776-4331

DRAFTED BY:	LMO	CHECKED BY:	BJR	SHEET NO: <b>2B</b> 2B OF 2
DATE DRAFTED:	6/19/15	DATE SURVEYED:	3/13/15	
REVISED:		FILE NAME:	14-116	

# MULTI-WELL PLAN

## SECTION 33, T2N, R66W

NUMBER	WELL NAME	API NUMBER	LATITUDE (NAD 83)	LONGITUDE (NAD 83)	SURFACE ELEVATION	TOTAL DEPTH
1	*CARTER 11-33A	05-123-16240	40.100610	-104.789250	4953.0	8212
2	CARTER 21-33	05-123-17451	40.099889	-104.785204	4960.7	4866
3	*RANCHERO 31-33 1	05-123-09434	40.100038	-104.779939	4977.0	4946
4	*RANCHERO 41-33 2	05-123-09435	40.100048	-104.775929	4986.0	4960
5	MEL ANDERSON GAS UNIT 2	05-123-10910	40.097844	-104.785764	4953.0	8100
6	*UPRR 42 PAN AM AP 3	05-123-09583	40.096408	-104.780549	4972.0	4912
7	UPRR 42 PAN AM GAS UNIT "AT" 1	05-123-09460	40.098201	-104.777099	4986.3	8078
8	UPRR 42 PAN AM AP 2	05-123-09582	40.096425	-104.775082	4991.1	4900
9	COTTONWOOD 33-33	05-123-31541	40.092242	-104.788529	4948.6	7767
10	COTTONWOOD 34-33	05-123-31548	40.092262	-104.788504	4948.7	8425
11	COTTONWOOD 12-33	05-123-31526	40.092282	-104.788477	4948.7	8108
12	COTTONWOOD 13-33	05-123-31544	40.092301	-104.788454	4948.6	7880
13	COTTONWOOD 32-33	05-123-31542	40.092322	-104.788426	4948.9	8230
14	COTTONWOOD 11-33	05-123-31521	40.092345	-104.788396	4948.8	7803
15	*UPRR 42 PAN AM AP 4	05-123-09584	40.092758	-104.779149	4966.0	4875
16	LUPTON NORTH 10-33A	05-123-21702	40.093204	-104.778155	4972.1	8130
17	UPRR 42 PAN AM AP 1	05-123-09357	40.092860	-104.775101	4983.4	4935
18	MEL ANDERSON GAS UNIT 1	05-123-08422	40.090322	-104.787341	4970.8	8110
19	COTTONWOOD 23-33	05-123-31539	40.089427	-104.779365	4982.0	7805
20	COTTONWOOD 15-33	05-123-31535	40.089382	-104.779366	4981.8	7666
21	COTTONWOOD 14-33	05-123-31547	40.089338	-104.779364	4981.2	8355
22	COTTONWOOD 36-33	05-123-31537	40.089299	-104.779365	4982.0	8270
23	UPRR 42 PAN AM "AT" TRUE 1	05-123-11207	40.090107	-104.776241	4982.8	8100
24	COTTONWOOD 24-33	05-123-31534	40.089537	-104.775347	4986.6	8440
25	COTTONWOOD 9-33	05-123-31546	40.089539	-104.775288	4986.7	8314
26	COTTONWOOD 39-33	05-123-31549	40.089538	-104.775230	4986.9	7740
27	*UPRR 42 PAN AM AP 5	05-123-09585	40.089128	-104.775099	4988.0	4903

### NOTES:

- \* INDICATES EXISTING WELLS THAT WERE NOT SURVEYED BUT DERIVED FROM COLORADO OIL AND GAS CONSERVATION COMMISSION (COGCC).

**EXISTING WELL EXHIBIT  
SECTION 33, T2N, R66W, 6TH P.M.  
WELD COUNTY, COLORADO**

**Kerr-McGee Oil &  
Gas Onshore L.P.**  
1099 18th Street  
Denver, Colorado 80202



### CONSULTING, LLC

**SHERIDAN OFFICE**  
1095 Saberton Avenue  
Sheridan, Wyoming 82801  
Phone 307-674-0609

**LOVELAND OFFICE**  
1635 Foxtrail Drive, Suite 204  
Loveland, Colorado 80538  
Phone 970-776-4331

DRAFTED BY:	LMO	CHECKED BY:	BJR	SHEET NO: <b>2C</b> 2C OF 2
DATE DRAFTED:	6/19/15	DATE SURVEYED:	3/13/15	
REVISED:		FILE NAME:	14-116	