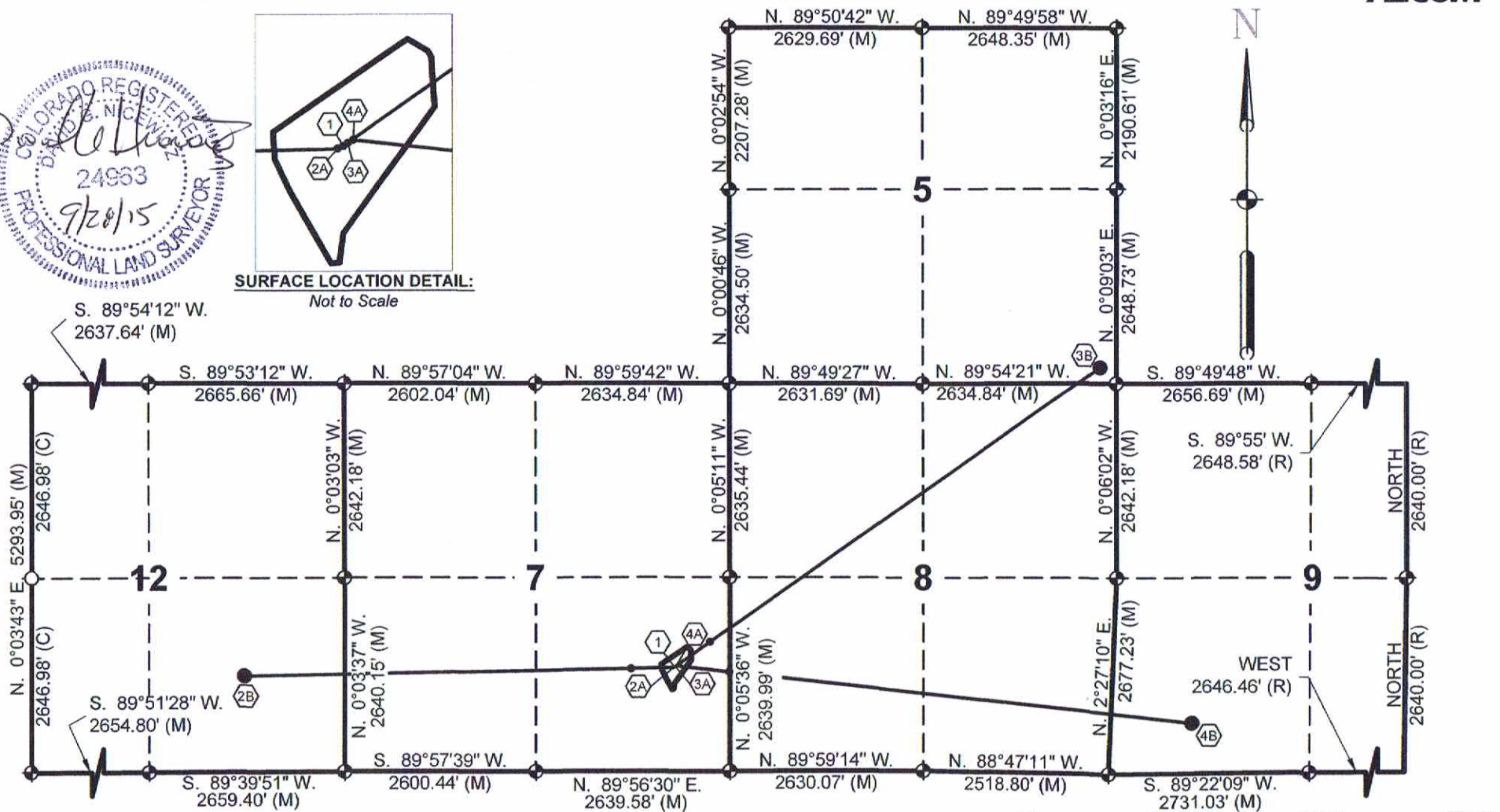




SURFACE LOCATION DETAIL:
Not to Scale



① **Federal 12-89-07 #1 (vertical):**
Surface Location
39.02543° N 1416 FSL
107.37148° W 757 FEL

② **Federal 12-89-07 #2:**
②A Surface Location
39.02541° N 1408 FSL
107.37153° W 770 FEL
②B Bottom Hole Location
39.02511° N 1309 FSL
107.39205° W 1364 FEL

③ **Federal 12-89-07 #3:**
③A Surface Location
39.02545° N 1423 FSL
107.37144° W 745 FEL
③B Bottom Hole Location
39.03658° N 217 FSL
107.35107° W 220 FEL

④ **Federal 12-89-07 #4:**
④A Surface Location
39.02547° N 1430 FSL
107.37139° W 731 FEL
④B Bottom Hole Location
39.02331° N 688 FSL
107.34670° W 1105 FWL

Note:
~ FNL, FSL, FEL and FWL is
the footage to the nearest
section line measured
perpendicularly. (i.e. feet
North to Line)
~ Horizontal Datum = NAD83

LEGEND

- ◆ ~ FOUND ORIGINAL STONE
- ⊕ ~ FOUND GLO BRASS CAP ON STEEL POST
- ⊕ ~ FOUND REBAR AND CAP BY LS15710
- ~ SET No.6 REBAR WITH A 2 1/2" ALUMINUM CAP, LS24963
- ~ WELL FEATURES

0' 2000' 4000' 6000'
Scale: 1" = 2000 U.S. Survey feet

MULTI-WELL LOCATION PLAT

FEDERAL 12-89-07 #1 - 4
Located in portions of Sections 5, 7, 8, 9 and 12,
Township 12 South, Ranges 89 & 90 West, 6th P.M.,
Gunnison County, Colorado

SURVEYED BY: DGN	DWG DATE: 09/27/15	AECOM David G. Nicewicz, PLS 804 Colorado Ave, Suite 201 Glenwood Springs Co 81610 cell: (720) 456-1104 email: david.nicewicz@aecom.com
DRAFTED BY: MLD	SCALE: 1" = 2000'	
JOB NO.: 22244264.70300	SHEET NO. 1 of 1	