

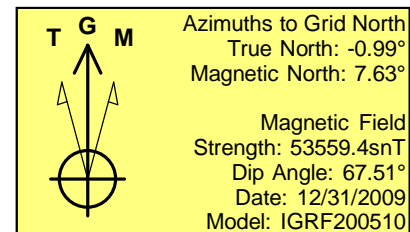
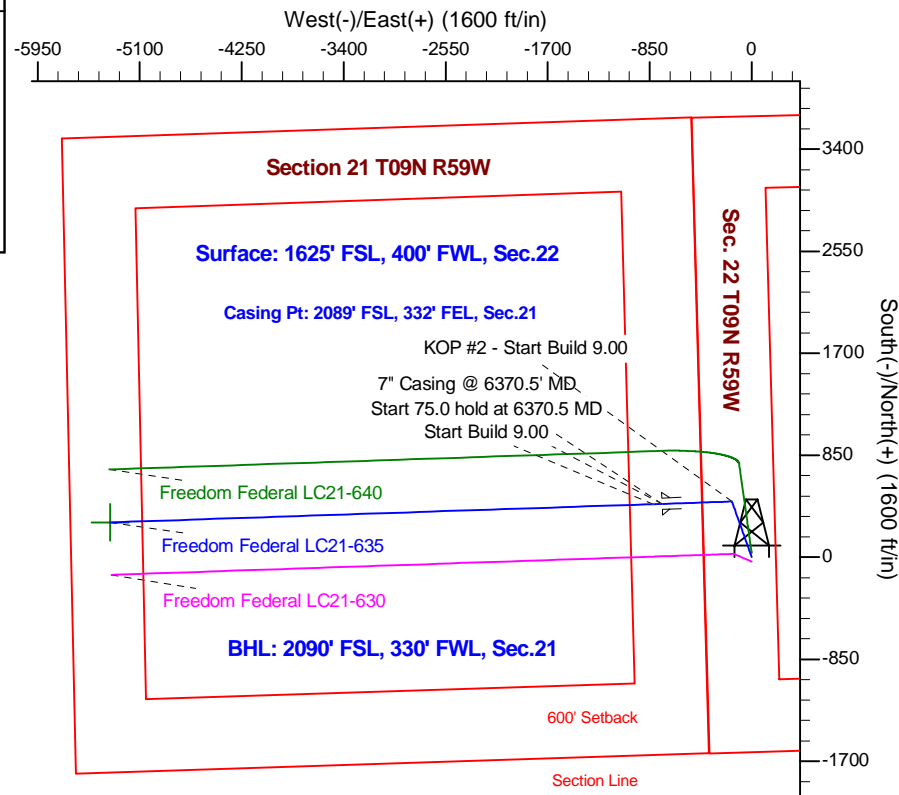
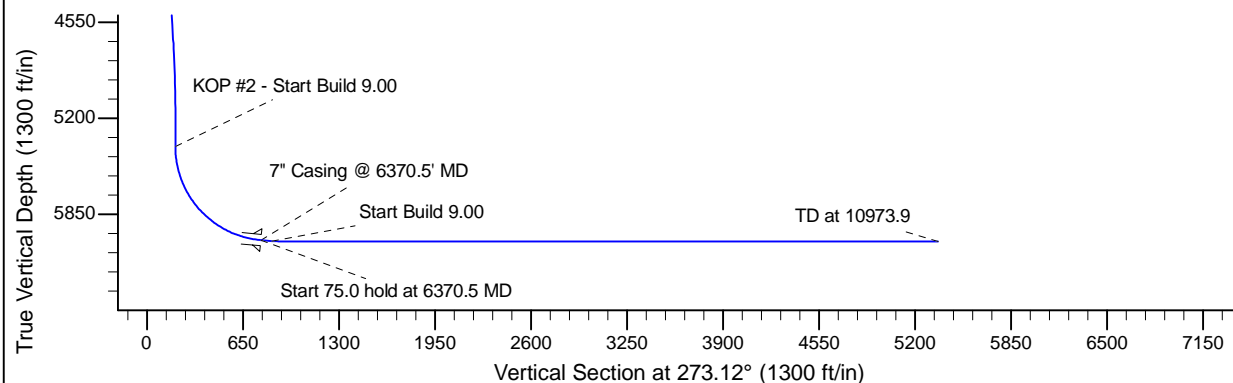
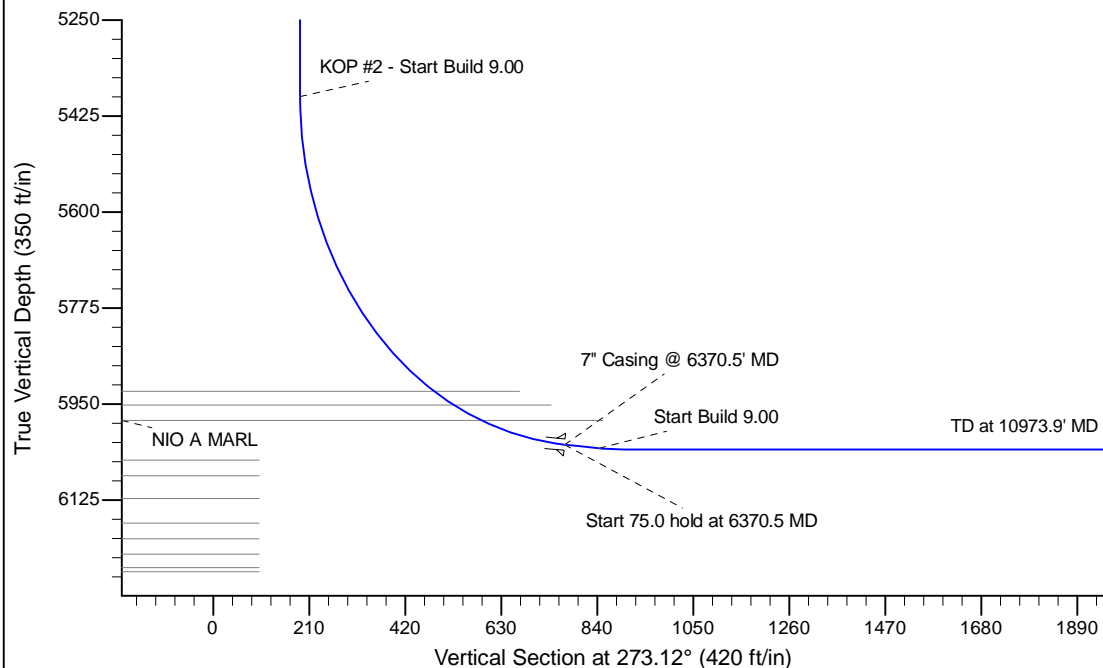
Project: Wattenberg Field
Site: LC (Sec.21-T09N-R59W) Weld County, CO
Well: Freedom Federal LC21-635
Wellbore: Original Drilling
Design: APD - Rev 0

Northern Region Drilling - Working

Geodetic System: US State Plane 1983
Datum: North American Datum 1983
Ellipsoid: GRS 1980
Zone: Colorado Northern Zone
System Datum: Mean Sea Level

SECTION DETAILS

Sec	MD	Inc	Azi	TVD	+N/-S	+E/-W	Dleg	TFace	VSect	Target
1	0.0	0.00	0.00	0.0	0.0	0.0	0.00	0.00	0.0	
2	1500.0	0.00	0.00	1500.0	0.0	0.0	0.00	0.00	0.0	
3	1939.7	8.79	340.46	1938.0	31.7	-11.3	2.00	340.46	13.0	
4	4726.5	8.79	340.46	4692.0	433.3	-153.7	0.00	0.00	177.1	
5	5166.2	0.00	0.00	5130.0	465.0	-165.0	2.00	180.00	190.0	
6	5426.1	0.00	0.00	5389.8	465.0	-165.0	0.00	0.00	190.0	
7	6370.5	85.00	268.08	6024.0	445.5	-745.8	9.00	268.08	768.9	
8	6445.5	85.00	268.08	6030.6	443.0	-820.5	0.00	0.00	843.3	
9	6501.1	90.00	268.08	6033.0	441.1	-875.9	9.00	0.00	898.6	
10	10973.9	90.00	268.08	6033.0	291.1	-5346.3	0.00	0.00	5354.2	Freedom Federal LC21-635 BHL 2090'FSL, 330'FWL



WELL DETAILS: Freedom Federal LC21-635

		Ground Level: 4883.0			
		Northing	Easting	Latitude	Longitude
0.0	0.0	1513644.68	3423430.94	40.733330	-103.972070

Plan: APD - Rev 0 (Freedom Federal LC21-635/Original Drilling)

Created By: Shailey Jewell Date: 9:16, August 21 2015

Checked: _____ Date: _____

Reviewed: _____ Date: _____

Approved: _____ Date: _____