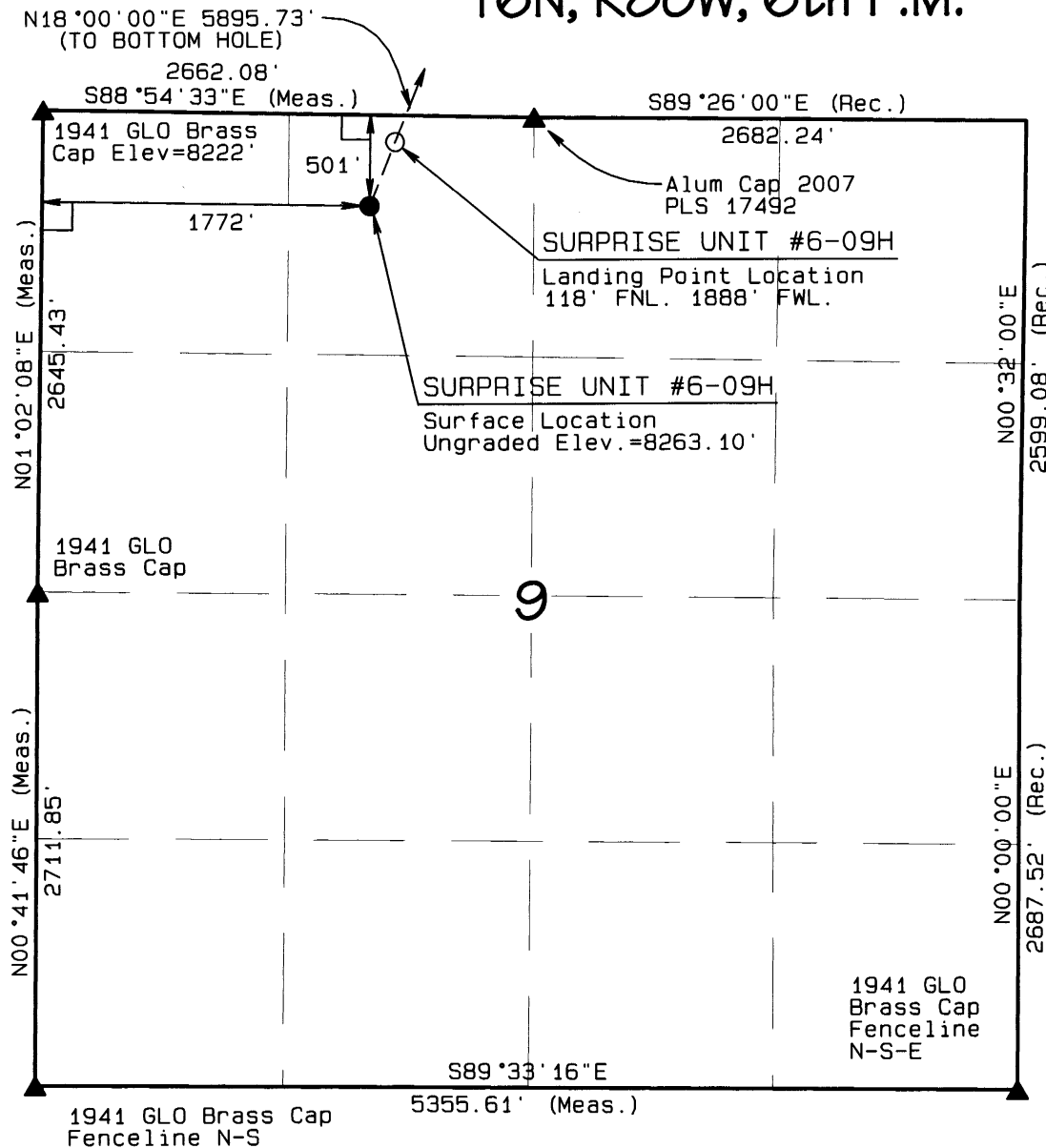


T6N, R80W, 6th P.M.



EE3 LLC

Surface Hole location, SURPRISE UNIT #6-09H as shown in the NE1/4NW1/4 of Section 9, T6N, R80W, 6th P.M., Jackson County, Colorado.

BASIS OF BEARINGS:

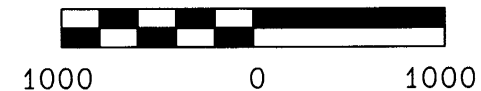
US STATE PLANE 1983
CO NORTH 0501 GRID

BASIS OF ELEVATION

SPOT ELEVATION AT THE NW CORNER OF SECTION 9, T6N, R80W, 6TH PM, TAKEN FROM THE COALMONT QUADRANGLE, USGS 7.5 MIN QUAD (TOPOGRAPHIC MAP) WITH SAID ELEVATION MARKED AS BEING 8222 FEET.

SURFACE USE
AGRICULTURAL/GRAZING

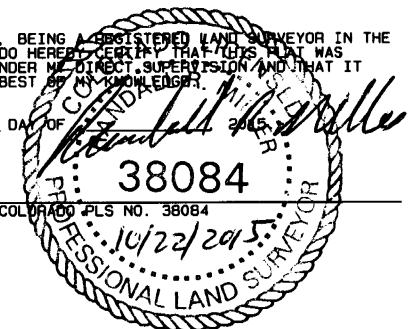
GRAPHIC SCALE 1"=1000'



I RANDALL R. MILLER, BEING A REGISTERED LAND SURVEYOR IN THE STATE OF COLORADO, DO HEREBY CERTIFY THAT THIS PLAT WAS MADE BY ME AND/OR UNDER MY DIRECT SUPERVISION AND THAT IT IS ACCURATE TO THE BEST OF MY KNOWLEDGE.

DATED THIS _____ DAY OF _____, 2015

RANDALL R. MILLER, COLORADO PLS NO. 38084



LEGEND

90° SYMBOL
FOUND CORNER
PROPOSED WELL
PROPOSED BHL/LPL



NAD 83 (SURFACE LOCATION)

LATITUDE=40.510337°N
LONGITUDE=106.384140°W PDOP = 1.176

NAD 83 (TARGET BOTTOM HOLE)

LATITUDE=40.525777°N
LONGITUDE=106.377789°W

NAD 83 (LANDING POINT LOCATION)

LATITUDE=40.511384°N
LONGITUDE=106.383709°W

NORTH PARK ENGINEERING & CONSULTING, INC.

P.O. BOX 395
WALDEN, CO 80480
(970) 723-3725

DATE OF FIELD WORK: MAY 21, 2015 DRAWING COMPLETION: JUNE 17, 2015

SURVEYED BY: RAS

DRAWN BY: TKH

CHECKED BY: RAS

T6N, R80W, 6th P.M.

EE3 LLC

Bottom Hole location, SURPRISE UNIT #6-09H as shown in the NW1/4NE1/4 of Section 4, T6N, R80W, 6th P.M., Jackson County, Colorado.

BASIS OF BEARINGS:

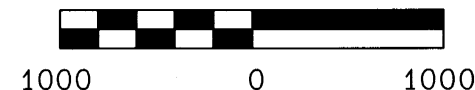
US STATE PLANE 1983
CO NORTH 0501 GRID

BASIS OF ELEVATION

SPOT ELEVATION AT THE NW CORNER OF SECTION 9, T6N, R80W, 6TH PM, TAKEN FROM THE COALMONT QUADRANGLE, USGS 7.5 MIN QUAD (TOPOGRAPHIC MAP) WITH SAID ELEVATION MARKED AS BEING 8222 FEET.

SURFACE USE
AGRICULTURAL/GRAZING

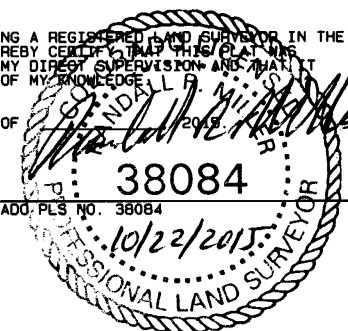
GRAPHIC SCALE 1"=1000'



I RANDALL R. MILLER, BEING A REGISTERED LAND SURVEYOR IN THE STATE OF COLORADO, DO HEREBY CERTIFY THAT THIS PLAT WAS MADE BY ME AND/OR UNDER MY DIRECT SUPERVISION AND THAT IT IS ACCURATE TO THE BEST OF MY KNOWLEDGE.

DATED THIS _____ DAY OF _____, 2015

RANDALL R. MILLER, COLORADO, PLS NO. 38084



NORTH PARK ENGINEERING & CONSULTING, INC.

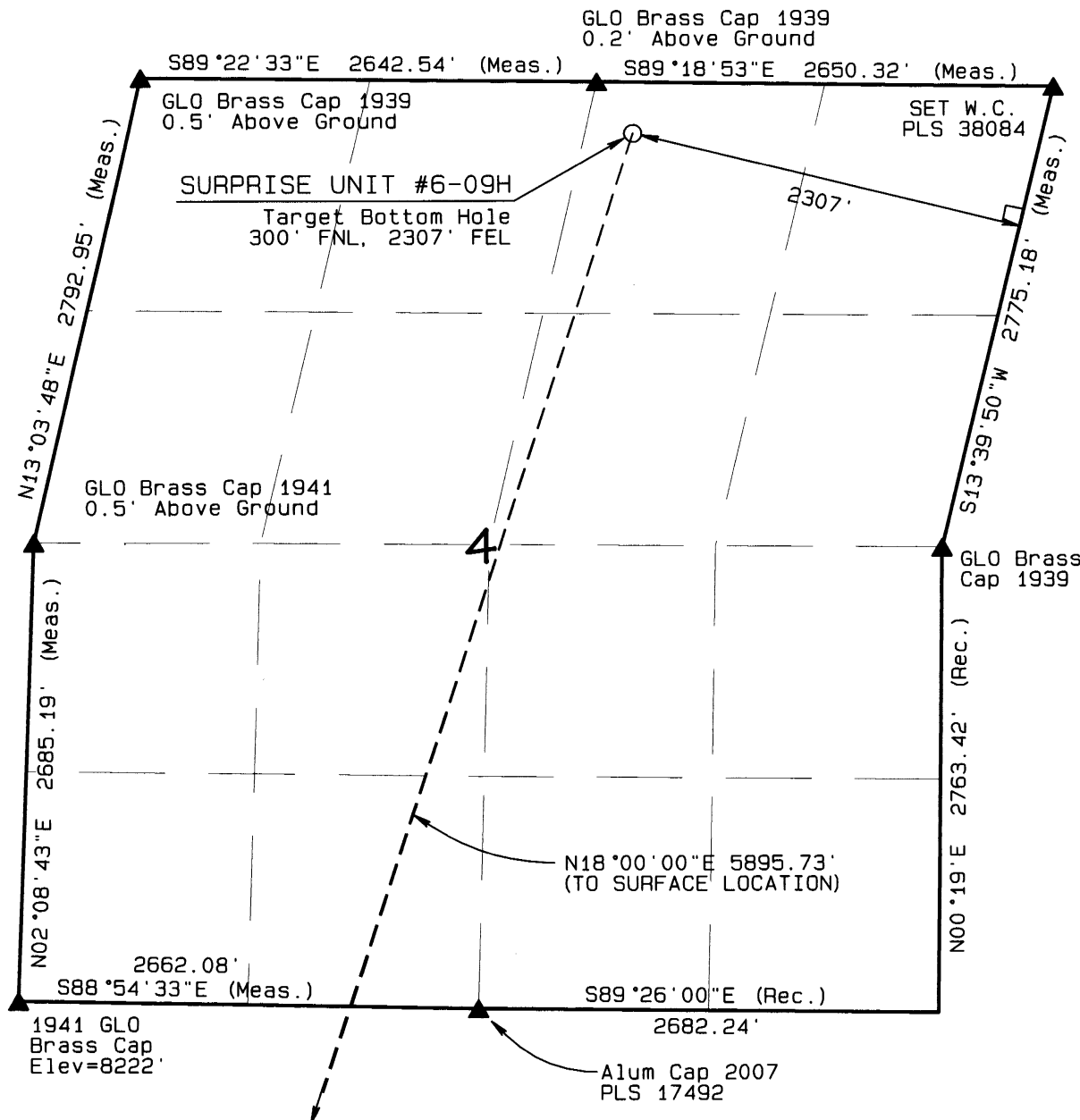
P.O. BOX 395
WALDEN, CO 80480
(970) 723-3725

DATE OF FIELD WORK: MAY 21, 2015 DRAWING COMPLETION: JUNE 17, 2015

SURVEYED BY: RAS

DRAWN BY: TKH

CHECKED BY: RAS



LEGEND

90° SYMBOL
FOUND CORNER
PROPOSED WELL
PROPOSED BHL/LPL



NAD 83 (SURFACE LOCATION)

LATITUDE=40.510337°N
LONGITUDE=106.384140°W PDOP = 1.176

NAD 83 (TARGET BOTTOM HOLE)

LATITUDE=40.525777°N
LONGITUDE=106.377789°W

NAD 83 (LANDING POINT LOCATION)

LATITUDE=40.511384°N
LONGITUDE=106.383709°W

T6N, R80W, 6th P.M.

EE3 LLC

Multi-Section Plan, SURPRISE UNIT #6-09H
as shown in Sections 4 and 9, T6N, R80W,
6th P.M., Jackson County, Colorado.

BASIS OF BEARINGS:

US STATE PLANE 1983
CO NORTH 0501 GRID

BASIS OF ELEVATION

SPOT ELEVATION AT THE NW CORNER OF SECTION 9,
T6N, R80W, 6TH PM, TAKEN FROM THE COALMONT
QUADRANGLE, USGS 7.5 MIN QUAD (TOPOGRAPHIC MAP)
WITH SAID ELEVATION MARKED AS BEING 8222 FEET.

SURFACE USE
AGRICULTURAL/GRAZING

GRAPHIC SCALE 1"=2000'

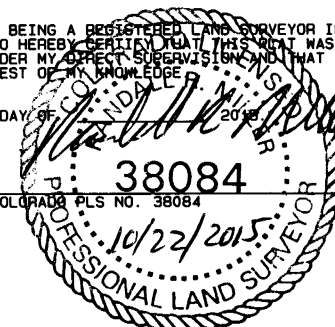


2000 0 2000

I RANDALL R. MILLER, BEING A REGISTERED LAND SURVEYOR IN THE
STATE OF COLORADO, DO HEREBY CERTIFY THAT THIS PLAN WAS
MADE BY ME AND/OR UNDER MY DIRECT SUPERVISION AND THAT IT
IS ACCURATE TO THE BEST OF MY KNOWLEDGE.

DATED THIS _____ DAY OF _____, 2015

RANDALL R. MILLER, COLORADO PLS NO. 38084

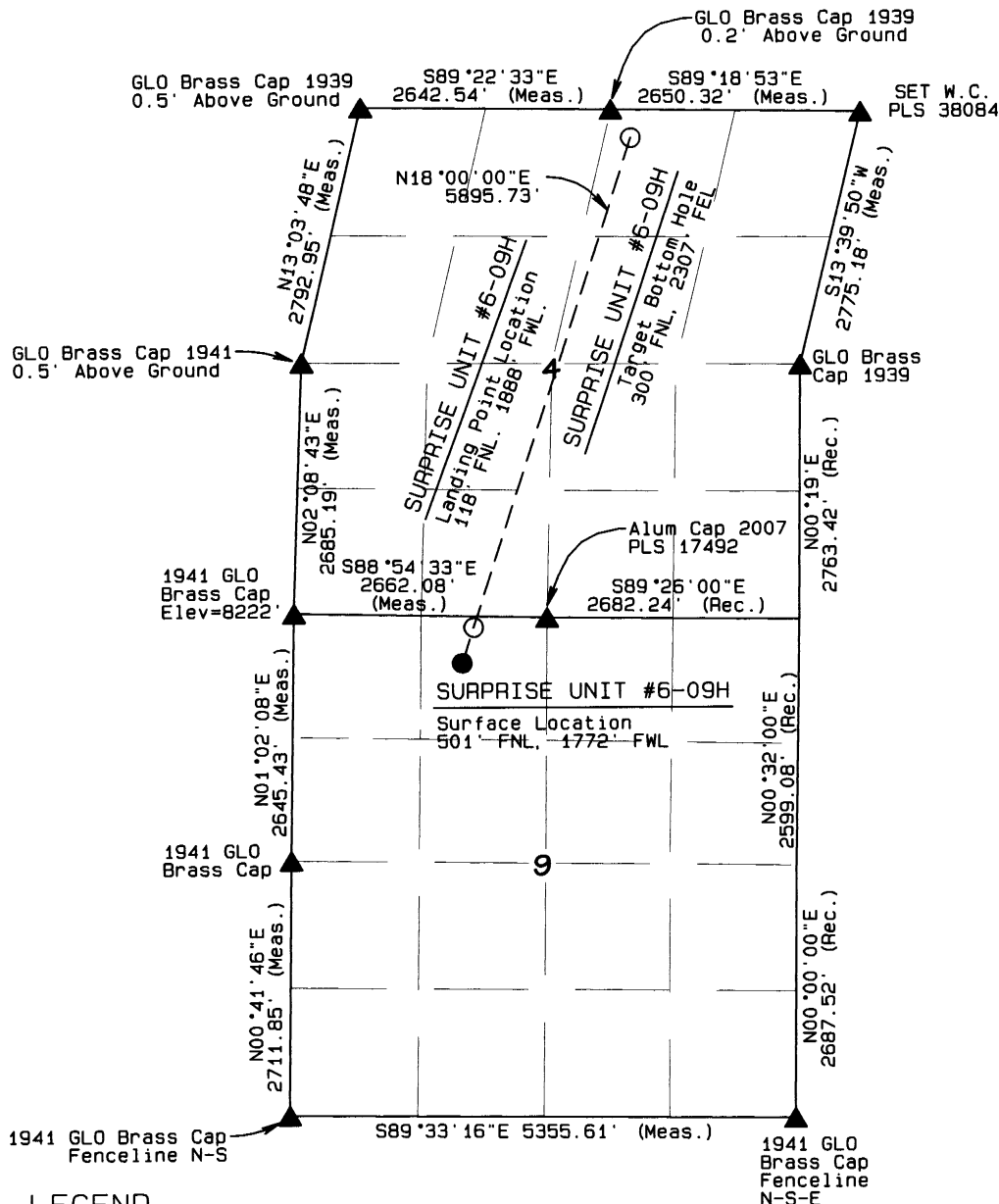


NORTH PARK ENGINEERING &
CONSULTING, INC.

P.O. BOX 395
WALDEN, CO 80480
(970) 723-3725

DATE OF FIELD WORK: MAY 21, 2015 DRAWING COMPLETION: JUNE 17, 2015

SURVEYED BY: RAS DRAWN BY: TKH CHECKED BY: RAS



LEGEND

FOUND CORNER
PROPOSED WELL
PROPOSED BHL/LPL



NAD 83 (SURFACE LOCATION)	NAD 83 (TARGET BOTTOM HOLE)	NAD 83 (LANDING POINT LOCATION)
LATITUDE=40.510337°N LONGITUDE=106.384140°W PDOP = 1.176	LATITUDE=40.525777°N LONGITUDE=106.377789°W	LATITUDE=40.511384°N LONGITUDE=106.383709°W