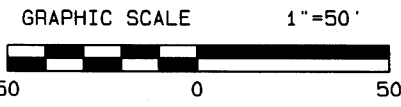
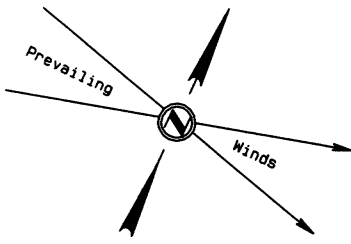
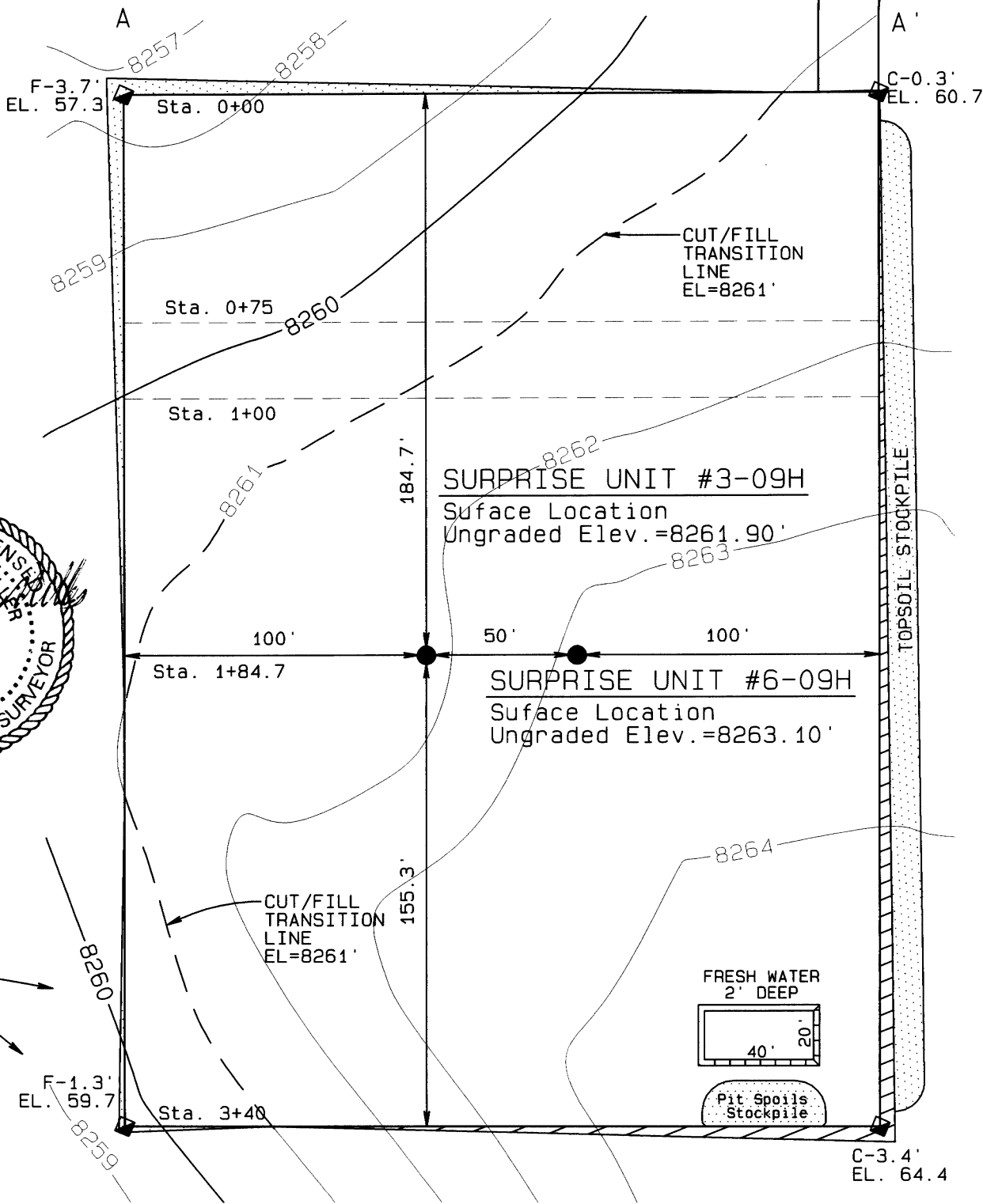


EE3 LLC

CONSTRUCTION LAYOUT
SURPRISE UNIT #3-09H
SURPRISE UNIT #6-09H
NE1/4NW1/4 of
SECTION 9, T6N, R80W, 6th PM

PROPOSED
ACCESS ROAD
(18'x115')

EXISTING
RANCH ROAD

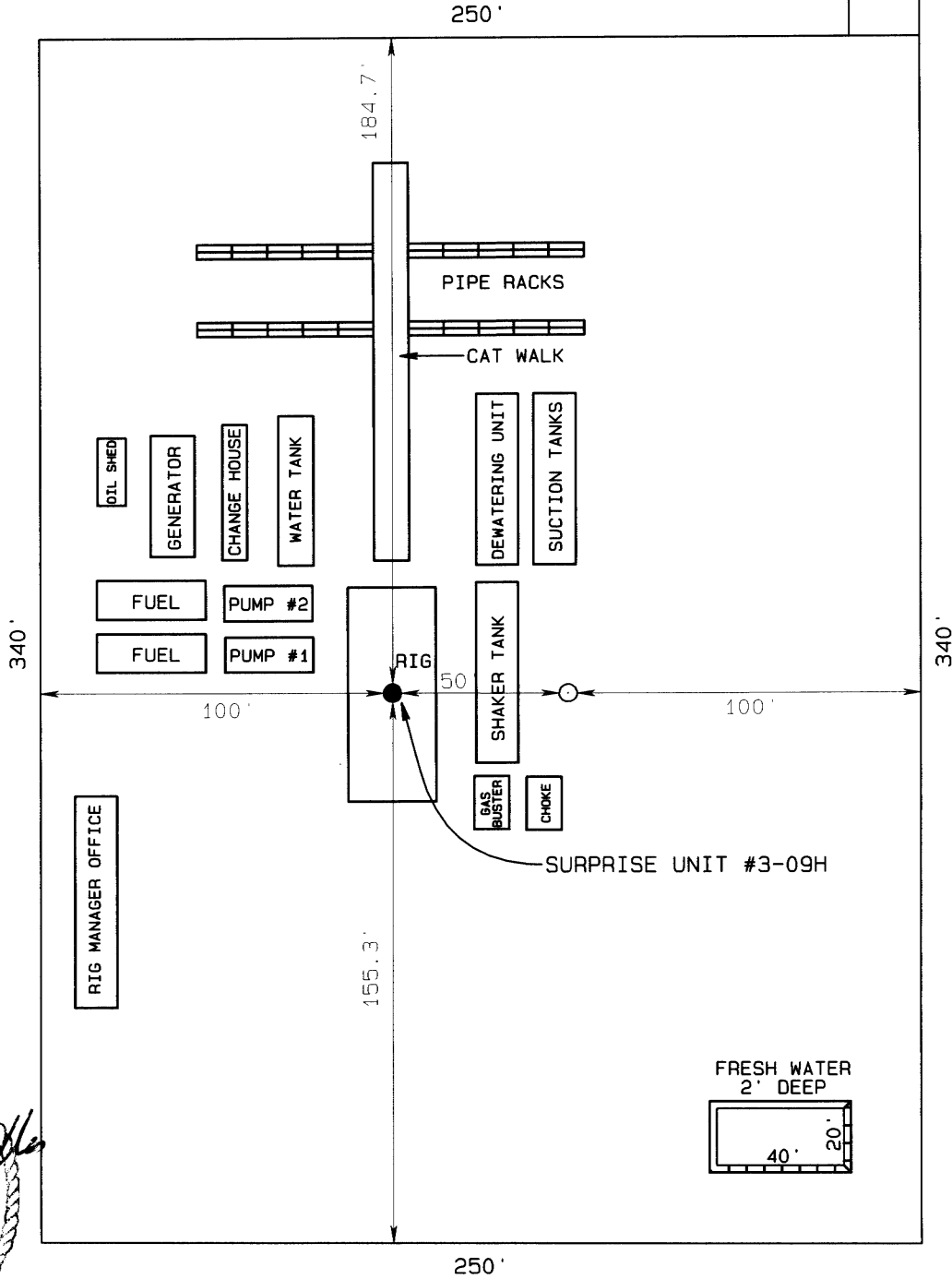
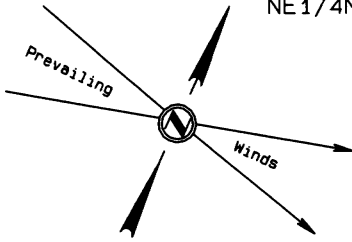


Final Pad Elev.=8261'
Earthwork:
Total Excavation - 3550 Cu. Yd.
Pad Fill - 2050 Cu. Yd.
Topsoil Stockpile - 1500 Cu. Yd.

EE3 LLC

TYPICAL RIG LAYOUT
SURPRISE UNIT #3-09H
NE1/4NW1/4 of SECTION 9, T6N, R80W, 6th PM

NEW
ACCESS ROAD
(18'x115')



GRAPHIC SCALE 1"=50'

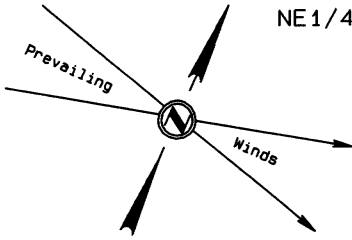


Final Pad Elev.=8261'

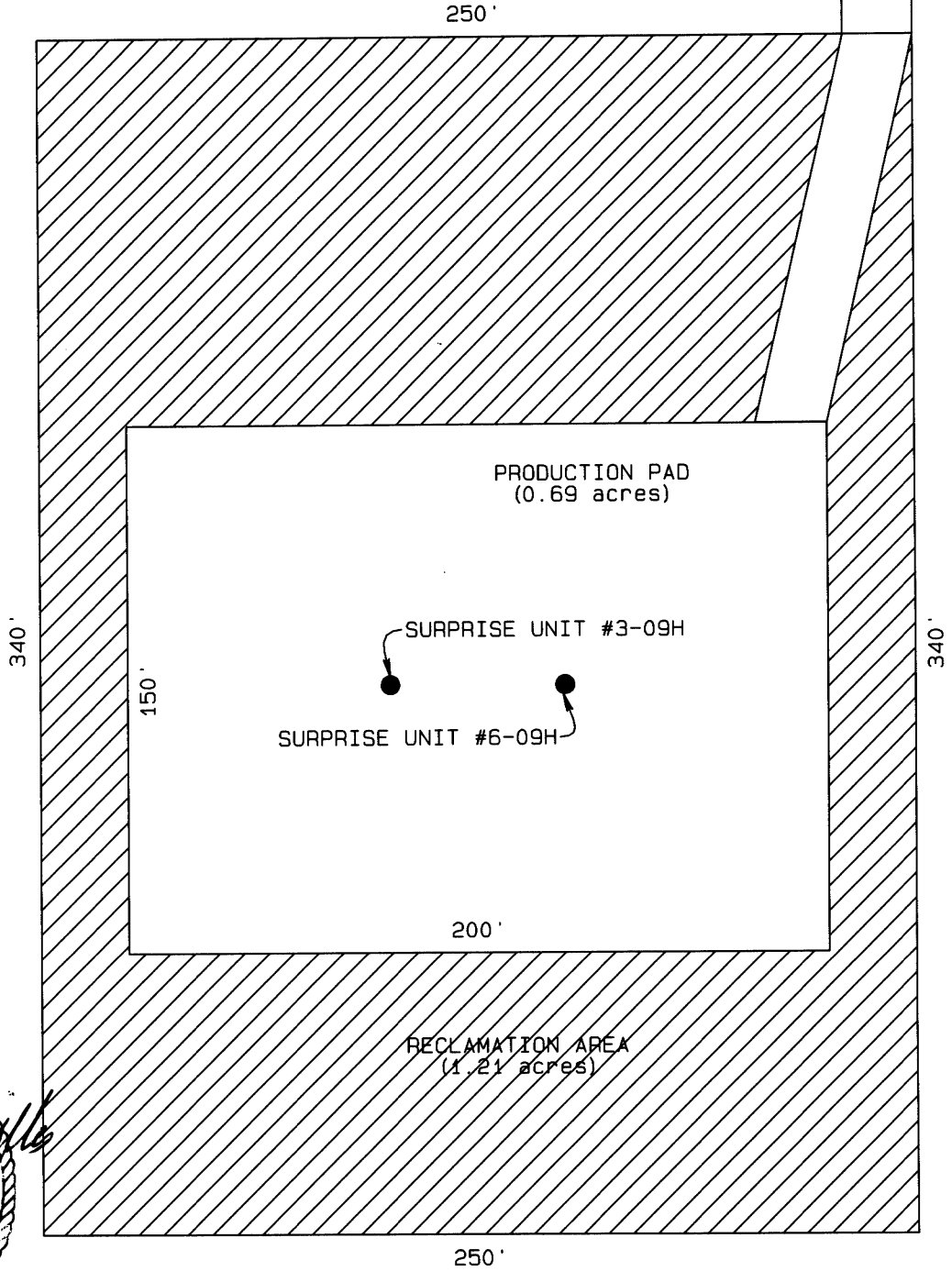
NORTH PARK ENGINEERING & CONSULTING, INC.
PO Box 395 Walden, CO 80480 970-723-3725

EE3 LLC

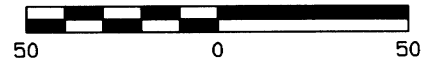
RECLAMATION LAYOUT
SURPRISE UNIT #3-09H AND #6-09H
NE1/4NW1/4 of SECTION 9, T6N, R80W, 6th PM



NEW
ACCESS ROAD
(18' x 115')



GRAPHIC SCALE 1"=50'



Final Pad Elev.=8261'

NORTH PARK ENGINEERING & CONSULTING, INC.
PO Box 395 Walden, CO 80480 970-723-3725