

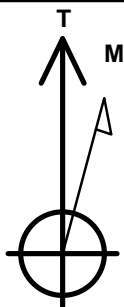
# Bayswater Exploration & Production, LLC

Well Name: **Mojack P-28HC**

Surface Location: Mojack 28-C Pad (East) Sec.28-T7N-R64W  
 North American Datum 1983 , US State Plane 1983 , Colorado Northern Zone  
 Ground Elevation: 4901.0  
 +N/-S +E/-W Northing Easting Latitude Longitude Slot  
 0.0 0.0 1444866.59 3263647.39 40.550687 -104.551239  
 RKB - 22.5' WELL @ 4923.5ft (RKB - 22.5')

## WELLBORE TARGET DETAILS

Name	TVD	+N/-S	+E/-W	Shape
SHL 230'FNL & 1680'FEL, SEC.28	1.0	0.0	0.0	Point
LPL 531'FNL, 173'FEL, SEC.28	7157.5	-264.0	1501.2	Point
BHL 470'FSL & 173'FEL, SEC.33	7158.0	-9813.3	1363.6	Point



Azimuths to True North  
 Magnetic North: 8.18°

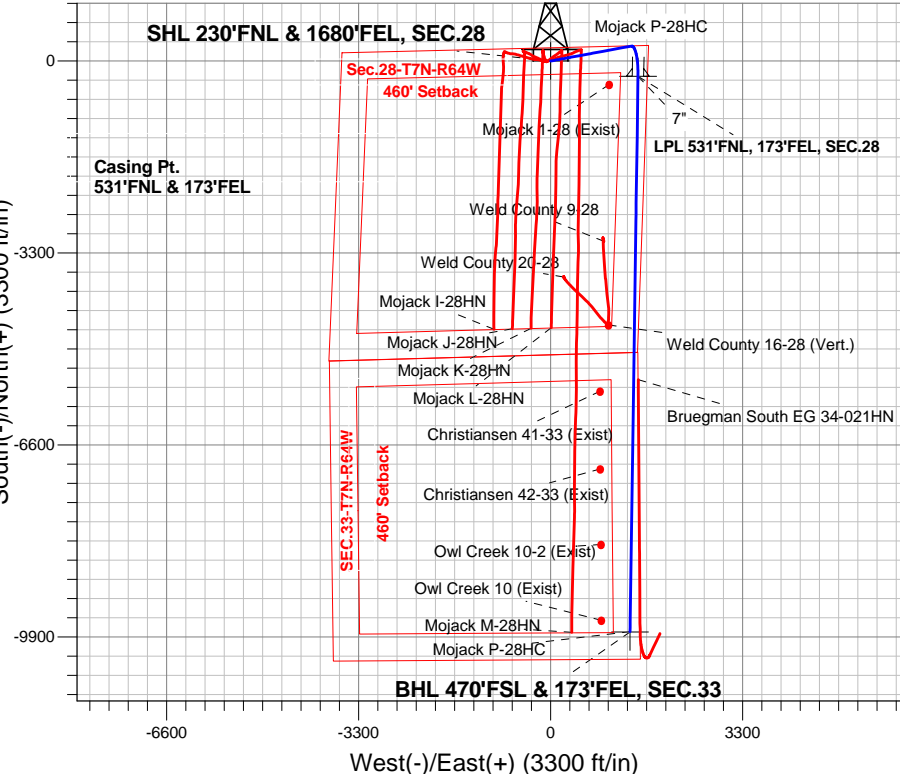
Magnetic Field  
 Strength: 52778.1snT  
 Dip Angle: 67.06°  
 Date: 10/2/2015  
 Model: IGRF2010

Mojack 28-C Pad (East) Sec.28-T7N-R64W  
 Mojack P-28HC  
 Plan #3 (9-30-15)  
 12:58, October 02 2015

## ANNOTATIONS

TVD	MD	Annotation
200.0	200.0	KOP - Start Build 2.00
846.1	851.7	Start 5933.8 hold at 851.7 MD
6627.0	6785.5	Start DLS 11.00 TFO 101.06
7157.5	7626.8	Start 9544.6 hold at 7626.8 MD
7158.0	17171.4	TD at 17171.4

South(-)/North(+) (3300 ft/in)

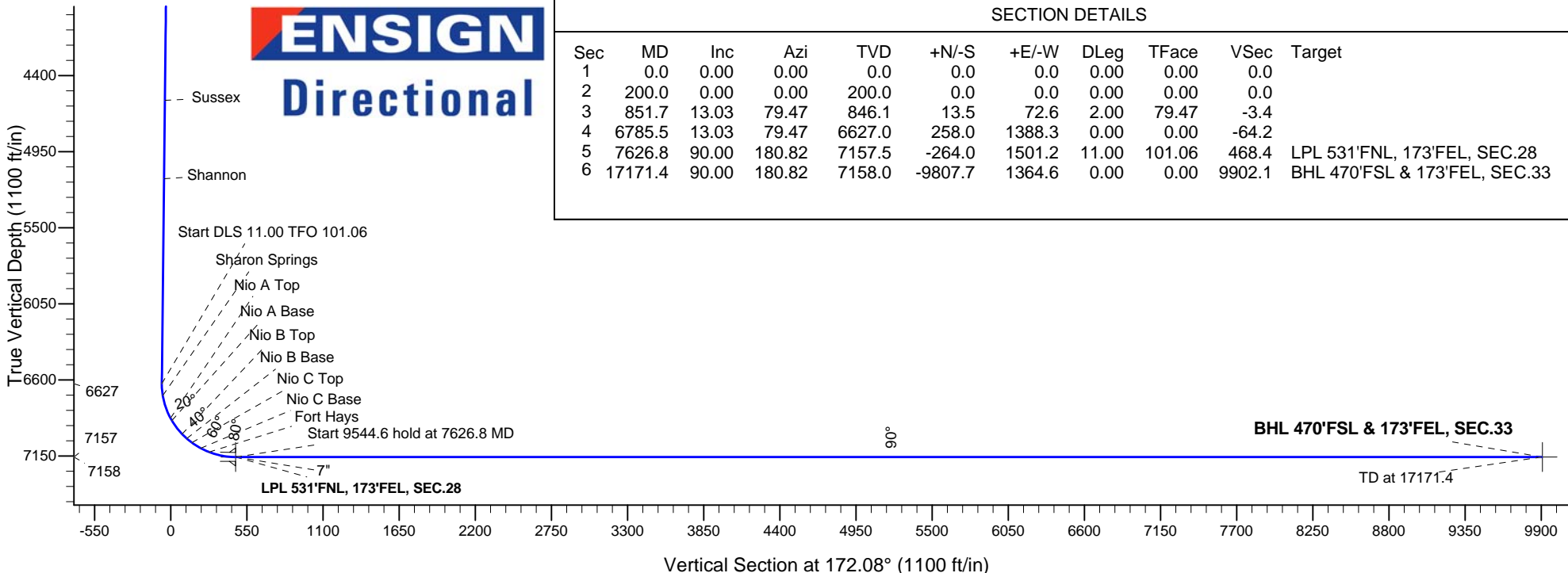


West(-)/East(+) (3300 ft/in)

**ENSIGN**  
**Directional**

## SECTION DETAILS

Sec	MD	Inc	Azi	TVD	+N/-S	+E/-W	DLeg	TFace	VSec	Target
1	0.0	0.00	0.00	0.0	0.0	0.0	0.00	0.00	0.0	
2	200.0	0.00	0.00	200.0	0.0	0.0	0.00	0.00	0.0	
3	851.7	13.03	79.47	846.1	13.5	72.6	2.00	79.47	-3.4	
4	6785.5	13.03	79.47	6627.0	258.0	1388.3	0.00	0.00	-64.2	
5	7626.8	90.00	180.82	7157.5	-264.0	1501.2	11.00	101.06	468.4	LPL 531'FNL, 173'FEL, SEC.28
6	17171.4	90.00	180.82	7158.0	-9807.7	1364.6	0.00	0.00	9902.1	BHL 470'FSL & 173'FEL, SEC.33





# **Bayswater Exploration & Production, LLC**

**SEC.28-T7N-R64W**

**Mojack 28-C Pad (East) Sec.28-T7N-R64W**

**Mojack P-28HC**

**Wellbore #1**

**Plan: Plan #3 (9-30-15)**

## **Standard Planning Report**

**02 October, 2015**



**BAYSWATER**  
**EXPLORATION & PRODUCTION, LLC**

<b>Database:</b>	EDMNEW	<b>Local Co-ordinate Reference:</b>	Well Mojack P-28HC
<b>Company:</b>	Bayswater Exploration & Production, LLC	<b>TVD Reference:</b>	WELL @ 4923.5ft (RKB - 22.5')
<b>Project:</b>	SEC.28-T7N-R64W	<b>MD Reference:</b>	WELL @ 4923.5ft (RKB - 22.5')
<b>Site:</b>	Mojack 28-C Pad (East) Sec.28-T7N-R64W	<b>North Reference:</b>	True
<b>Well:</b>	Mojack P-28HC	<b>Survey Calculation Method:</b>	Minimum Curvature
<b>Wellbore:</b>	Wellbore #1		
<b>Design:</b>	Plan #3 (9-30-15)		

<b>Project</b>	SEC.28-T7N-R64W, Weld County, Colorado		
<b>Map System:</b>	US State Plane 1983	<b>System Datum:</b>	Mean Sea Level
<b>Geo Datum:</b>	North American Datum 1983		Using Well Reference Point
<b>Map Zone:</b>	Colorado Northern Zone		Using geodetic scale factor

Site		Mojack 28-C Pad (East) Sec.28-T7N-R64W			
Site Position:		Northing:	1,444,862.34 ft	Latitude:	40.550679
From:	Lat/Long	Easting:	3,263,521.54 ft	Longitude:	-104.551692
Position Uncertainty:	0.0 ft	Slot Radius:	"	Grid Convergence:	0.61 °

Well	Mojack P-28HC					
Well Position	+N-S	2.9 ft	Northing:	1,444,866.59 ft	Latitude:	40.550687
	+E-W	125.9 ft	Easting:	3,263,647.39 ft	Longitude:	-104.551239
Position Uncertainty		0.0 ft	Wellhead Elevation:	ft	Ground Level:	4,901.0 ft

<b>Wellbore</b>	Wellbore #1				
<b>Magnetics</b>	<b>Model Name</b>	<b>Sample Date</b>	<b>Declination (°)</b>	<b>Dip Angle (°)</b>	<b>Field Strength (nT)</b>
	IGRF2010	10/2/2015	8.18	67.06	52,778

<b>Design</b>	Plan #3 (9-30-15)			
<b>Audit Notes:</b>				
<b>Version:</b>	<b>Phase:</b>	PROTOTYPE	<b>Tie On Depth:</b>	0.0
<b>Vertical Section:</b>	<b>Depth From (TVD) (ft)</b>	<b>+N/-S (ft)</b>	<b>+E/-W (ft)</b>	<b>Direction (°)</b>
	0.0	0.0	0.0	172.08

<b>Plan Sections</b>										
Measured Depth (ft)	Inclination (°)	Azimuth (°)	Vertical Depth (ft)	+N/-S (ft)	+E/-W (ft)	Dogleg Rate (°/100ft)	Build Rate (°/100ft)	Turn Rate (°/100ft)	TFO (°)	Target
0.0	0.00	0.00	0.0	0.0	0.0	0.00	0.00	0.00	0.00	
200.0	0.00	0.00	200.0	0.0	0.0	0.00	0.00	0.00	0.00	
851.7	13.03	79.47	846.1	13.5	72.6	2.00	2.00	0.00	79.47	
6,785.5	13.03	79.47	6,627.0	258.0	1,388.3	0.00	0.00	0.00	0.00	
7,626.8	90.00	180.82	7,157.5	-264.0	1,501.2	11.00	9.15	12.05	101.06	LPL 531'FNL, 173°F
17,171.4	90.00	180.82	7,158.0	-9,807.7	1,364.6	0.00	0.00	0.00	0.00	BHL 470'FSL & 173

<b>Database:</b>	EDMNEW	<b>Local Co-ordinate Reference:</b>	Well Mojack P-28HC
<b>Company:</b>	Bayswater Exploration & Production, LLC	<b>TVD Reference:</b>	WELL @ 4923.5ft (RKB - 22.5')
<b>Project:</b>	SEC.28-T7N-R64W	<b>MD Reference:</b>	WELL @ 4923.5ft (RKB - 22.5')
<b>Site:</b>	Mojack 28-C Pad (East) Sec.28-T7N-R64W	<b>North Reference:</b>	True
<b>Well:</b>	Mojack P-28HC	<b>Survey Calculation Method:</b>	Minimum Curvature
<b>Wellbore:</b>	Wellbore #1		
<b>Design:</b>	Plan #3 (9-30-15)		

Planned Survey									
Measured Depth (ft)	Inclination (°)	Azimuth (°)	Vertical Depth (ft)	+N/-S (ft)	+E/-W (ft)	Vertical Section (ft)	Dogleg Rate (°/100ft)	Build Rate (°/100ft)	Turn Rate (°/100ft)
0.0	0.00	0.00	0.0	0.0	0.0	0.0	0.00	0.00	0.00
100.0	0.00	0.00	100.0	0.0	0.0	0.0	0.00	0.00	0.00
200.0	0.00	0.00	200.0	0.0	0.0	0.0	0.00	0.00	0.00
<b>KOP - Start Build 2.00</b>									
300.0	2.00	79.47	300.0	0.3	1.7	-0.1	2.00	2.00	0.00
400.0	4.00	79.47	399.8	1.3	6.9	-0.3	2.00	2.00	0.00
500.0	6.00	79.47	499.5	2.9	15.4	-0.7	2.00	2.00	0.00
600.0	8.00	79.47	598.7	5.1	27.4	-1.3	2.00	2.00	0.00
700.0	10.00	79.47	697.5	8.0	42.8	-2.0	2.00	2.00	0.00
800.0	12.00	79.47	795.6	11.4	61.5	-2.8	2.00	2.00	0.00
851.7	13.03	79.47	846.1	13.5	72.6	-3.4	2.00	2.00	0.00
<b>Start 5933.8 hold at 851.7 MD</b>									
900.0	13.03	79.47	893.1	15.5	83.3	-3.9	0.00	0.00	0.00
1,000.0	13.03	79.47	990.6	19.6	105.4	-4.9	0.00	0.00	0.00
1,100.0	13.03	79.47	1,088.0	23.7	127.6	-5.9	0.00	0.00	0.00
1,200.0	13.03	79.47	1,185.4	27.8	149.8	-6.9	0.00	0.00	0.00
1,300.0	13.03	79.47	1,282.8	32.0	172.0	-8.0	0.00	0.00	0.00
1,400.0	13.03	79.47	1,380.3	36.1	194.1	-9.0	0.00	0.00	0.00
1,500.0	13.03	79.47	1,477.7	40.2	216.3	-10.0	0.00	0.00	0.00
1,600.0	13.03	79.47	1,575.1	44.3	238.5	-11.0	0.00	0.00	0.00
1,700.0	13.03	79.47	1,672.5	48.4	260.7	-12.1	0.00	0.00	0.00
1,800.0	13.03	79.47	1,770.0	52.6	282.8	-13.1	0.00	0.00	0.00
1,900.0	13.03	79.47	1,867.4	56.7	305.0	-14.1	0.00	0.00	0.00
2,000.0	13.03	79.47	1,964.8	60.8	327.2	-15.1	0.00	0.00	0.00
2,100.0	13.03	79.47	2,062.2	64.9	349.4	-16.2	0.00	0.00	0.00
2,200.0	13.03	79.47	2,159.7	69.0	371.5	-17.2	0.00	0.00	0.00
2,300.0	13.03	79.47	2,257.1	73.2	393.7	-18.2	0.00	0.00	0.00
2,400.0	13.03	79.47	2,354.5	77.3	415.9	-19.2	0.00	0.00	0.00
2,500.0	13.03	79.47	2,451.9	81.4	438.0	-20.3	0.00	0.00	0.00
2,600.0	13.03	79.47	2,549.4	85.5	460.2	-21.3	0.00	0.00	0.00
2,700.0	13.03	79.47	2,646.8	89.6	482.4	-22.3	0.00	0.00	0.00
2,800.0	13.03	79.47	2,744.2	93.8	504.6	-23.3	0.00	0.00	0.00
2,900.0	13.03	79.47	2,841.6	97.9	526.7	-24.4	0.00	0.00	0.00
3,000.0	13.03	79.47	2,939.0	102.0	548.9	-25.4	0.00	0.00	0.00
3,100.0	13.03	79.47	3,036.5	106.1	571.1	-26.4	0.00	0.00	0.00
3,200.0	13.03	79.47	3,133.9	110.3	593.3	-27.4	0.00	0.00	0.00
3,300.0	13.03	79.47	3,231.3	114.4	615.4	-28.5	0.00	0.00	0.00
3,400.0	13.03	79.47	3,328.7	118.5	637.6	-29.5	0.00	0.00	0.00
3,500.0	13.03	79.47	3,426.2	122.6	659.8	-30.5	0.00	0.00	0.00
3,600.0	13.03	79.47	3,523.6	126.7	682.0	-31.5	0.00	0.00	0.00
3,700.0	13.03	79.47	3,621.0	130.9	704.1	-32.6	0.00	0.00	0.00
3,800.0	13.03	79.47	3,718.4	135.0	726.3	-33.6	0.00	0.00	0.00
3,900.0	13.03	79.47	3,815.9	139.1	748.5	-34.6	0.00	0.00	0.00
3,902.7	13.03	79.47	3,818.5	139.2	749.1	-34.6	0.00	0.00	0.00
<b>Parkman</b>									
4,000.0	13.03	79.47	3,913.3	143.2	770.6	-35.6	0.00	0.00	0.00
4,100.0	13.03	79.47	4,010.7	147.3	792.8	-36.7	0.00	0.00	0.00
4,200.0	13.03	79.47	4,108.1	151.5	815.0	-37.7	0.00	0.00	0.00
4,300.0	13.03	79.47	4,205.6	155.6	837.2	-38.7	0.00	0.00	0.00
4,400.0	13.03	79.47	4,303.0	159.7	859.3	-39.8	0.00	0.00	0.00
4,500.0	13.03	79.47	4,400.4	163.8	881.5	-40.8	0.00	0.00	0.00
4,600.0	13.03	79.47	4,497.8	167.9	903.7	-41.8	0.00	0.00	0.00
4,683.8	13.03	79.47	4,579.5	171.4	922.3	-42.7	0.00	0.00	0.00
<b>Sussex</b>									

<b>Database:</b>	EDMNEW	<b>Local Co-ordinate Reference:</b>	Well Mojack P-28HC
<b>Company:</b>	Bayswater Exploration & Production, LLC	<b>TVD Reference:</b>	WELL @ 4923.5ft (RKB - 22.5')
<b>Project:</b>	SEC.28-T7N-R64W	<b>MD Reference:</b>	WELL @ 4923.5ft (RKB - 22.5')
<b>Site:</b>	Mojack 28-C Pad (East) Sec.28-T7N-R64W	<b>North Reference:</b>	True
<b>Well:</b>	Mojack P-28HC	<b>Survey Calculation Method:</b>	Minimum Curvature
<b>Wellbore:</b>	Wellbore #1		
<b>Design:</b>	Plan #3 (9-30-15)		

Planned Survey									
Measured Depth (ft)	Inclination (°)	Azimuth (°)	Vertical Depth (ft)	+N/-S (ft)	+E/-W (ft)	Vertical Section (ft)	Dogleg Rate (°/100ft)	Build Rate (°/100ft)	Turn Rate (°/100ft)
4,700.0	13.03	79.47	4,595.2	172.1	925.9	-42.8	0.00	0.00	0.00
4,800.0	13.03	79.47	4,692.7	176.2	948.0	-43.9	0.00	0.00	0.00
4,900.0	13.03	79.47	4,790.1	180.3	970.2	-44.9	0.00	0.00	0.00
5,000.0	13.03	79.47	4,887.5	184.4	992.4	-45.9	0.00	0.00	0.00
5,100.0	13.03	79.47	4,984.9	188.5	1,014.6	-46.9	0.00	0.00	0.00
5,200.0	13.03	79.47	5,082.4	192.7	1,036.7	-48.0	0.00	0.00	0.00
5,264.8	13.03	79.47	5,145.5	195.3	1,051.1	-48.6	0.00	0.00	0.00
<b>Shannon</b>									
5,300.0	13.03	79.47	5,179.8	196.8	1,058.9	-49.0	0.00	0.00	0.00
5,400.0	13.03	79.47	5,277.2	200.9	1,081.1	-50.0	0.00	0.00	0.00
5,500.0	13.03	79.47	5,374.6	205.0	1,103.3	-51.0	0.00	0.00	0.00
5,600.0	13.03	79.47	5,472.1	209.2	1,125.4	-52.1	0.00	0.00	0.00
5,700.0	13.03	79.47	5,569.5	213.3	1,147.6	-53.1	0.00	0.00	0.00
5,800.0	13.03	79.47	5,666.9	217.4	1,169.8	-54.1	0.00	0.00	0.00
5,900.0	13.03	79.47	5,764.3	221.5	1,191.9	-55.1	0.00	0.00	0.00
6,000.0	13.03	79.47	5,861.8	225.6	1,214.1	-56.2	0.00	0.00	0.00
6,100.0	13.03	79.47	5,959.2	229.8	1,236.3	-57.2	0.00	0.00	0.00
6,200.0	13.03	79.47	6,056.6	233.9	1,258.5	-58.2	0.00	0.00	0.00
6,300.0	13.03	79.47	6,154.0	238.0	1,280.6	-59.2	0.00	0.00	0.00
6,400.0	13.03	79.47	6,251.4	242.1	1,302.8	-60.3	0.00	0.00	0.00
6,500.0	13.03	79.47	6,348.9	246.2	1,325.0	-61.3	0.00	0.00	0.00
6,600.0	13.03	79.47	6,446.3	250.4	1,347.2	-62.3	0.00	0.00	0.00
6,700.0	13.03	79.47	6,543.7	254.5	1,369.3	-63.3	0.00	0.00	0.00
6,785.5	13.03	79.47	6,627.0	258.0	1,388.3	-64.2	0.00	0.00	0.00
<b>Start DLS 11.00 TFO 101.06</b>									
6,800.0	12.82	86.55	6,641.1	258.4	1,391.5	-64.2	11.00	-1.46	48.76
6,874.4	14.66	120.65	6,713.5	254.1	1,407.9	-57.6	11.00	2.47	45.86
<b>Sharon Springs</b>									
6,900.0	16.21	129.51	6,738.2	250.2	1,413.4	-53.0	11.00	6.06	34.57
7,000.0	24.48	150.92	6,832.0	223.1	1,434.3	-23.3	11.00	8.27	21.41
7,049.9	29.26	156.92	6,876.5	202.8	1,444.1	-1.9	11.00	9.58	12.03
<b>Nio A Top</b>									
7,069.5	31.20	158.81	6,893.5	193.7	1,447.9	7.7	11.00	9.88	9.62
<b>Nio A Base</b>									
7,100.0	34.26	161.35	6,919.1	178.2	1,453.5	23.8	11.00	10.03	8.35
7,193.3	43.85	167.16	6,991.5	121.6	1,469.1	82.0	11.00	10.29	6.22
<b>Nio B Top</b>									
7,200.0	44.55	167.49	6,996.3	117.1	1,470.1	86.6	11.00	10.43	5.01
7,239.6	48.70	169.32	7,023.5	88.9	1,475.9	115.4	11.00	10.48	4.62
<b>Nio B Base</b>									
7,287.5	53.76	171.24	7,053.5	52.1	1,482.1	152.7	11.00	10.55	4.01
<b>Nio C Top</b>									
7,300.0	55.08	171.70	7,060.8	42.0	1,483.7	162.8	11.00	10.58	3.68
7,362.5	61.71	173.81	7,093.5	-10.7	1,490.3	216.0	11.00	10.62	3.36
<b>Nio C Base</b>									
7,400.0	65.71	174.94	7,110.1	-44.2	1,493.6	249.6	11.00	10.66	3.03
7,429.5	68.86	175.79	7,121.5	-71.3	1,495.8	276.8	11.00	10.68	2.86
<b>Fort Hays</b>									
7,500.0	76.41	177.67	7,142.5	-138.4	1,499.6	343.8	11.00	10.70	2.68
7,600.0	87.13	180.17	7,156.8	-237.2	1,501.5	441.9	11.00	10.72	2.49
7,626.8	90.00	180.82	7,157.5	-264.0	1,501.2	468.4	10.99	10.71	2.43
<b>Start 9544.6 hold at 7626.8 MD - 7"</b>									

<b>Database:</b>	EDMNEW	<b>Local Co-ordinate Reference:</b>	Well Mojack P-28HC
<b>Company:</b>	Bayswater Exploration & Production, LLC	<b>TVD Reference:</b>	WELL @ 4923.5ft (RKB - 22.5')
<b>Project:</b>	SEC.28-T7N-R64W	<b>MD Reference:</b>	WELL @ 4923.5ft (RKB - 22.5')
<b>Site:</b>	Mojack 28-C Pad (East) Sec.28-T7N-R64W	<b>North Reference:</b>	True
<b>Well:</b>	Mojack P-28HC	<b>Survey Calculation Method:</b>	Minimum Curvature
<b>Wellbore:</b>	Wellbore #1		
<b>Design:</b>	Plan #3 (9-30-15)		

Planned Survey									
Measured Depth (ft)	Inclination (°)	Azimuth (°)	Vertical Depth (ft)	+N/-S (ft)	+E/-W (ft)	Vertical Section (ft)	Dogleg Rate (°/100ft)	Build Rate (°/100ft)	Turn Rate (°/100ft)
7,700.0	90.00	180.82	7,157.5	-337.2	1,500.2	540.7	0.00	0.00	0.00
7,800.0	90.00	180.82	7,157.5	-437.2	1,498.7	639.6	0.00	0.00	0.00
7,900.0	90.00	180.82	7,157.5	-537.2	1,497.3	738.4	0.00	0.00	0.00
8,000.0	90.00	180.82	7,157.5	-637.2	1,495.9	837.3	0.00	0.00	0.00
8,100.0	90.00	180.82	7,157.5	-737.2	1,494.5	936.1	0.00	0.00	0.00
8,200.0	90.00	180.82	7,157.5	-837.2	1,493.0	1,034.9	0.00	0.00	0.00
8,300.0	90.00	180.82	7,157.5	-937.2	1,491.6	1,133.8	0.00	0.00	0.00
8,400.0	90.00	180.82	7,157.5	-1,037.2	1,490.2	1,232.6	0.00	0.00	0.00
8,500.0	90.00	180.82	7,157.5	-1,137.1	1,488.7	1,331.5	0.00	0.00	0.00
8,600.0	90.00	180.82	7,157.6	-1,237.1	1,487.3	1,430.3	0.00	0.00	0.00
8,700.0	90.00	180.82	7,157.6	-1,337.1	1,485.9	1,529.1	0.00	0.00	0.00
8,800.0	90.00	180.82	7,157.6	-1,437.1	1,484.4	1,628.0	0.00	0.00	0.00
8,900.0	90.00	180.82	7,157.6	-1,537.1	1,483.0	1,726.8	0.00	0.00	0.00
9,000.0	90.00	180.82	7,157.6	-1,637.1	1,481.6	1,825.6	0.00	0.00	0.00
9,100.0	90.00	180.82	7,157.6	-1,737.1	1,480.1	1,924.5	0.00	0.00	0.00
9,200.0	90.00	180.82	7,157.6	-1,837.1	1,478.7	2,023.3	0.00	0.00	0.00
9,300.0	90.00	180.82	7,157.6	-1,937.1	1,477.3	2,122.2	0.00	0.00	0.00
9,400.0	90.00	180.82	7,157.6	-2,037.1	1,475.9	2,221.0	0.00	0.00	0.00
9,500.0	90.00	180.82	7,157.6	-2,137.0	1,474.4	2,319.8	0.00	0.00	0.00
9,600.0	90.00	180.82	7,157.6	-2,237.0	1,473.0	2,418.7	0.00	0.00	0.00
9,700.0	90.00	180.82	7,157.6	-2,337.0	1,471.6	2,517.5	0.00	0.00	0.00
9,800.0	90.00	180.82	7,157.6	-2,437.0	1,470.1	2,616.4	0.00	0.00	0.00
9,900.0	90.00	180.82	7,157.6	-2,537.0	1,468.7	2,715.2	0.00	0.00	0.00
10,000.0	90.00	180.82	7,157.6	-2,637.0	1,467.3	2,814.0	0.00	0.00	0.00
10,100.0	90.00	180.82	7,157.6	-2,737.0	1,465.8	2,912.9	0.00	0.00	0.00
10,200.0	90.00	180.82	7,157.6	-2,837.0	1,464.4	3,011.7	0.00	0.00	0.00
10,300.0	90.00	180.82	7,157.6	-2,937.0	1,463.0	3,110.6	0.00	0.00	0.00
10,400.0	90.00	180.82	7,157.6	-3,036.9	1,461.5	3,209.4	0.00	0.00	0.00
10,500.0	90.00	180.82	7,157.7	-3,136.9	1,460.1	3,308.2	0.00	0.00	0.00
10,600.0	90.00	180.82	7,157.7	-3,236.9	1,458.7	3,407.1	0.00	0.00	0.00
10,700.0	90.00	180.82	7,157.7	-3,336.9	1,457.2	3,505.9	0.00	0.00	0.00
10,800.0	90.00	180.82	7,157.7	-3,436.9	1,455.8	3,604.7	0.00	0.00	0.00
10,900.0	90.00	180.82	7,157.7	-3,536.9	1,454.4	3,703.6	0.00	0.00	0.00
11,000.0	90.00	180.82	7,157.7	-3,636.9	1,453.0	3,802.4	0.00	0.00	0.00
11,100.0	90.00	180.82	7,157.7	-3,736.9	1,451.5	3,901.3	0.00	0.00	0.00
11,200.0	90.00	180.82	7,157.7	-3,836.9	1,450.1	4,000.1	0.00	0.00	0.00
11,300.0	90.00	180.82	7,157.7	-3,936.9	1,448.7	4,098.9	0.00	0.00	0.00
11,400.0	90.00	180.82	7,157.7	-4,036.8	1,447.2	4,197.8	0.00	0.00	0.00
11,500.0	90.00	180.82	7,157.7	-4,136.8	1,445.8	4,296.6	0.00	0.00	0.00
11,600.0	90.00	180.82	7,157.7	-4,236.8	1,444.4	4,395.5	0.00	0.00	0.00
11,700.0	90.00	180.82	7,157.7	-4,336.8	1,442.9	4,494.3	0.00	0.00	0.00
11,800.0	90.00	180.82	7,157.7	-4,436.8	1,441.5	4,593.1	0.00	0.00	0.00
11,900.0	90.00	180.82	7,157.7	-4,536.8	1,440.1	4,692.0	0.00	0.00	0.00
12,000.0	90.00	180.82	7,157.7	-4,636.8	1,438.6	4,790.8	0.00	0.00	0.00
12,100.0	90.00	180.82	7,157.7	-4,736.8	1,437.2	4,889.6	0.00	0.00	0.00
12,200.0	90.00	180.82	7,157.7	-4,836.8	1,435.8	4,988.5	0.00	0.00	0.00
12,300.0	90.00	180.82	7,157.7	-4,936.8	1,434.3	5,087.3	0.00	0.00	0.00
12,400.0	90.00	180.82	7,157.7	-5,036.7	1,432.9	5,186.2	0.00	0.00	0.00
12,500.0	90.00	180.82	7,157.8	-5,136.7	1,431.5	5,285.0	0.00	0.00	0.00
12,600.0	90.00	180.82	7,157.8	-5,236.7	1,430.1	5,383.8	0.00	0.00	0.00
12,700.0	90.00	180.82	7,157.8	-5,336.7	1,428.6	5,482.7	0.00	0.00	0.00
12,800.0	90.00	180.82	7,157.8	-5,436.7	1,427.2	5,581.5	0.00	0.00	0.00
12,900.0	90.00	180.82	7,157.8	-5,536.7	1,425.8	5,680.4	0.00	0.00	0.00
13,000.0	90.00	180.82	7,157.8	-5,636.7	1,424.3	5,779.2	0.00	0.00	0.00

<b>Database:</b>	EDMNEW	<b>Local Co-ordinate Reference:</b>	Well Mojack P-28HC
<b>Company:</b>	Bayswater Exploration & Production, LLC	<b>TVD Reference:</b>	WELL @ 4923.5ft (RKB - 22.5')
<b>Project:</b>	SEC.28-T7N-R64W	<b>MD Reference:</b>	WELL @ 4923.5ft (RKB - 22.5')
<b>Site:</b>	Mojack 28-C Pad (East) Sec.28-T7N-R64W	<b>North Reference:</b>	True
<b>Well:</b>	Mojack P-28HC	<b>Survey Calculation Method:</b>	Minimum Curvature
<b>Wellbore:</b>	Wellbore #1		
<b>Design:</b>	Plan #3 (9-30-15)		

Planned Survey									
Measured Depth (ft)	Inclination (°)	Azimuth (°)	Vertical Depth (ft)	+N/-S (ft)	+E/-W (ft)	Vertical Section (ft)	Dogleg Rate (°/100ft)	Build Rate (°/100ft)	Turn Rate (°/100ft)
13,100.0	90.00	180.82	7,157.8	-5,736.7	1,422.9	5,878.0	0.00	0.00	0.00
13,200.0	90.00	180.82	7,157.8	-5,836.7	1,421.5	5,976.9	0.00	0.00	0.00
13,300.0	90.00	180.82	7,157.8	-5,936.7	1,420.0	6,075.7	0.00	0.00	0.00
13,400.0	90.00	180.82	7,157.8	-6,036.6	1,418.6	6,174.5	0.00	0.00	0.00
13,500.0	90.00	180.82	7,157.8	-6,136.6	1,417.2	6,273.4	0.00	0.00	0.00
13,600.0	90.00	180.82	7,157.8	-6,236.6	1,415.7	6,372.2	0.00	0.00	0.00
13,700.0	90.00	180.82	7,157.8	-6,336.6	1,414.3	6,471.1	0.00	0.00	0.00
13,800.0	90.00	180.82	7,157.8	-6,436.6	1,412.9	6,569.9	0.00	0.00	0.00
13,900.0	90.00	180.82	7,157.8	-6,536.6	1,411.5	6,668.7	0.00	0.00	0.00
14,000.0	90.00	180.82	7,157.8	-6,636.6	1,410.0	6,767.6	0.00	0.00	0.00
14,100.0	90.00	180.82	7,157.8	-6,736.6	1,408.6	6,866.4	0.00	0.00	0.00
14,200.0	90.00	180.82	7,157.8	-6,836.6	1,407.2	6,965.3	0.00	0.00	0.00
14,300.0	90.00	180.82	7,157.8	-6,936.5	1,405.7	7,064.1	0.00	0.00	0.00
14,400.0	90.00	180.82	7,157.9	-7,036.5	1,404.3	7,162.9	0.00	0.00	0.00
14,500.0	90.00	180.82	7,157.9	-7,136.5	1,402.9	7,261.8	0.00	0.00	0.00
14,600.0	90.00	180.82	7,157.9	-7,236.5	1,401.4	7,360.6	0.00	0.00	0.00
14,700.0	90.00	180.82	7,157.9	-7,336.5	1,400.0	7,459.4	0.00	0.00	0.00
14,800.0	90.00	180.82	7,157.9	-7,436.5	1,398.6	7,558.3	0.00	0.00	0.00
14,900.0	90.00	180.82	7,157.9	-7,536.5	1,397.1	7,657.1	0.00	0.00	0.00
15,000.0	90.00	180.82	7,157.9	-7,636.5	1,395.7	7,756.0	0.00	0.00	0.00
15,100.0	90.00	180.82	7,157.9	-7,736.5	1,394.3	7,854.8	0.00	0.00	0.00
15,200.0	90.00	180.82	7,157.9	-7,836.5	1,392.8	7,953.6	0.00	0.00	0.00
15,300.0	90.00	180.82	7,157.9	-7,936.4	1,391.4	8,052.5	0.00	0.00	0.00
15,400.0	90.00	180.82	7,157.9	-8,036.4	1,390.0	8,151.3	0.00	0.00	0.00
15,500.0	90.00	180.82	7,157.9	-8,136.4	1,388.6	8,250.2	0.00	0.00	0.00
15,600.0	90.00	180.82	7,157.9	-8,236.4	1,387.1	8,349.0	0.00	0.00	0.00
15,700.0	90.00	180.82	7,157.9	-8,336.4	1,385.7	8,447.8	0.00	0.00	0.00
15,800.0	90.00	180.82	7,157.9	-8,436.4	1,384.3	8,546.7	0.00	0.00	0.00
15,900.0	90.00	180.82	7,157.9	-8,536.4	1,382.8	8,645.5	0.00	0.00	0.00
16,000.0	90.00	180.82	7,157.9	-8,636.4	1,381.4	8,744.3	0.00	0.00	0.00
16,100.0	90.00	180.82	7,157.9	-8,736.4	1,380.0	8,843.2	0.00	0.00	0.00
16,200.0	90.00	180.82	7,157.9	-8,836.4	1,378.5	8,942.0	0.00	0.00	0.00
16,300.0	90.00	180.82	7,158.0	-8,936.3	1,377.1	9,040.9	0.00	0.00	0.00
16,400.0	90.00	180.82	7,158.0	-9,036.3	1,375.7	9,139.7	0.00	0.00	0.00
16,500.0	90.00	180.82	7,158.0	-9,136.3	1,374.2	9,238.5	0.00	0.00	0.00
16,600.0	90.00	180.82	7,158.0	-9,236.3	1,372.8	9,337.4	0.00	0.00	0.00
16,700.0	90.00	180.82	7,158.0	-9,336.3	1,371.4	9,436.2	0.00	0.00	0.00
16,800.0	90.00	180.82	7,158.0	-9,436.3	1,369.9	9,535.1	0.00	0.00	0.00
16,900.0	90.00	180.82	7,158.0	-9,536.3	1,368.5	9,633.9	0.00	0.00	0.00
17,000.0	90.00	180.82	7,158.0	-9,636.3	1,367.1	9,732.7	0.00	0.00	0.00
17,100.0	90.00	180.82	7,158.0	-9,736.3	1,365.7	9,831.6	0.00	0.00	0.00
17,171.4	90.00	180.82	7,158.0	-9,807.7	1,364.6	9,902.1	0.00	0.00	0.00
TD at 17171.4									



<b>Database:</b>	EDMNEW	<b>Local Co-ordinate Reference:</b>	Well Mojack P-28HC
<b>Company:</b>	Bayswater Exploration & Production, LLC	<b>TVD Reference:</b>	WELL @ 4923.5ft (RKB - 22.5')
<b>Project:</b>	SEC.28-T7N-R64W	<b>MD Reference:</b>	WELL @ 4923.5ft (RKB - 22.5')
<b>Site:</b>	Mojack 28-C Pad (East) Sec.28-T7N-R64W	<b>North Reference:</b>	True
<b>Well:</b>	Mojack P-28HC	<b>Survey Calculation Method:</b>	Minimum Curvature
<b>Wellbore:</b>	Wellbore #1		
<b>Design:</b>	Plan #3 (9-30-15)		

Targets									
Target Name									
- hit/miss target	Dip Angle	Dip Dir.	TVD	+N/-S	+E/-W	Northing	Easting	Latitude	Longitude
- Shape	(°)	(°)	(ft)	(ft)	(ft)	(ft)	(ft)		
LPL 531'FNL, 173'FEI - plan hits target center - Point	0.00	0.00	7,157.5	-264.0	1,501.2	1,444,618.68	3,265,151.31	40.549962	-104.545837
BHL 470'FSL & 173'F - plan misses target center by 5.7ft at 17171.4ft MD (7158.0 TVD, -9807.7 N, 1364.6 E) - Point	0.00	0.00	7,158.0	-9,813.3	1,363.6	1,435,068.77	3,265,115.90	40.523751	-104.546334
SHL 230'FNL & 1680' - plan hits target center - Point	0.00	0.00	1.0	0.0	0.0	1,444,866.60	3,263,647.39	40.550687	-104.551239

Casing Points				
Measured Depth	Vertical Depth	Name	Casing Diameter	Hole Diameter
(ft)	(ft)		(")	(")
7,626.8	7,157.5	7"	7	7-1/2

Formations						
Measured Depth	Vertical Depth	Name	Lithology	Dip	Dip Direction	
(ft)	(ft)			(°)	(°)	
3,902.7	3,818.5	Parkman				
4,683.8	4,579.5	Sussex				
5,264.8	5,145.5	Shannon				
6,874.4	6,713.5	Sharon Springs				
7,049.9	6,876.5	Nio A Top				
7,069.5	6,893.5	Nio A Base				
7,193.3	6,991.5	Nio B Top				
7,239.6	7,023.5	Nio B Base				
7,287.5	7,053.5	Nio C Top				
7,362.5	7,093.5	Nio C Base				
7,429.5	7,121.5	Fort Hays				
	7,165.5	Codell				
	7,181.5	Base of Codell				

Plan Annotations				
Measured Depth	Vertical Depth	Local Coordinates		Comment
(ft)	(ft)	+N/-S (ft)	+E/-W (ft)	
200.0	200.0	0.0	0.0	KOP - Start Build 2.00
851.7	846.1	13.5	72.6	Start 5933.8 hold at 851.7 MD
6,785.5	6,627.0	258.0	1,388.3	Start DLS 11.00 TFO 101.06
7,626.8	7,157.5	-264.0	1,501.2	Start 9544.6 hold at 7626.8 MD
17,171.4	7,158.0	-9,807.7	1,364.6	TD at 17171.4