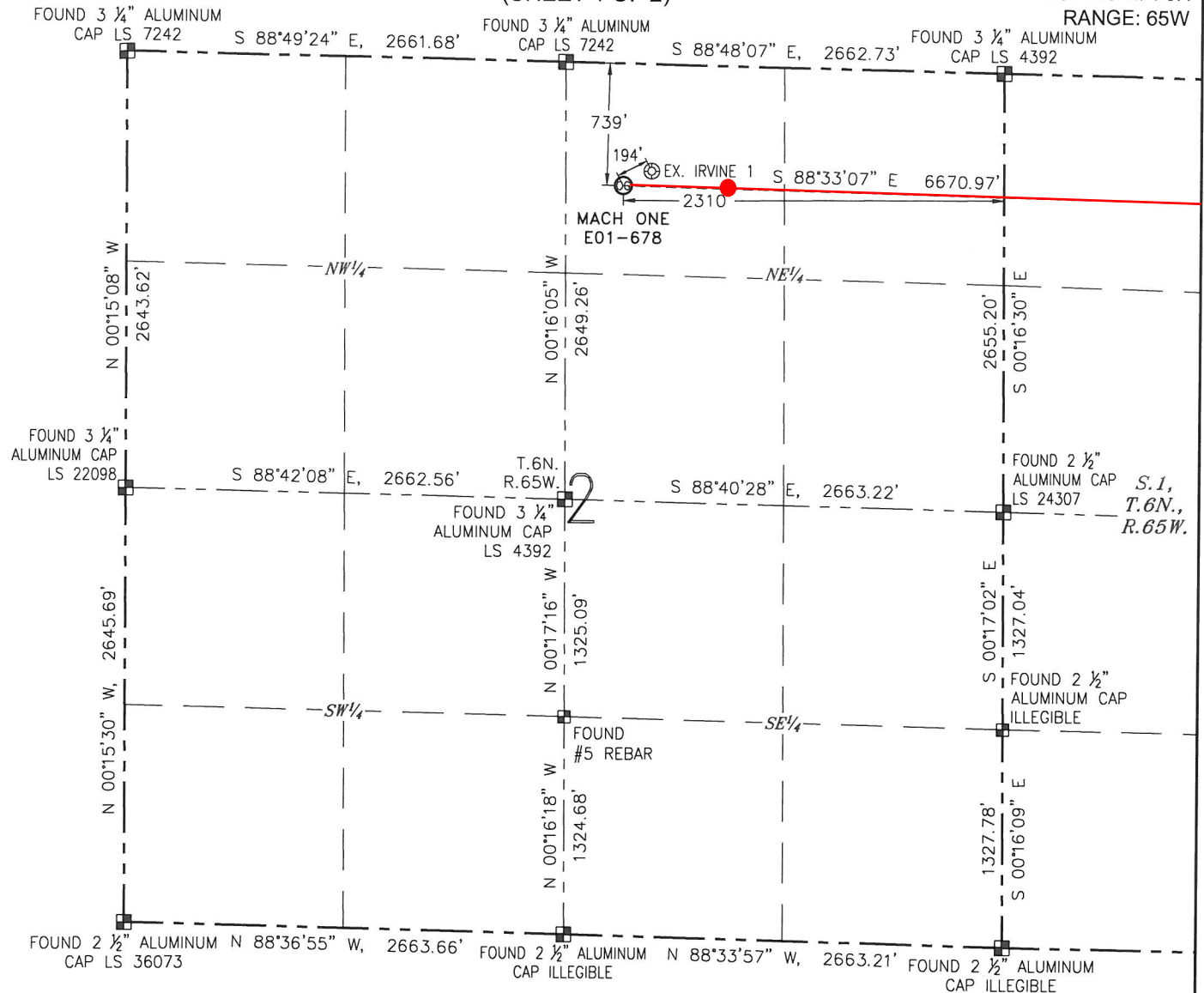


# WELL LOCATION CERTIFICATE

MACH ONE E01-678

(SHEET 1 OF 2)

SECTION: 2  
TOWNSHIP: 6N  
RANGE: 65W



## NOTES:

1. BEARINGS ARE GRID BEARINGS OF THE COLORADO STATE PLANE COORDINATE SYSTEM, NORTH ZONE, NAD 83. THE LINEAL DIMENSIONS SHOWN HEREON ARE BASED UPON THE "U.S. SURVEY FOOT".
2. GROUND ELEVATIONS ARE BASED UPON NGS OPUS SOLUTION NAVD 88 DATUM COMPUTED USING GEOID09.
3. IMPROVEMENTS: SEE LOCATION DRAWING FOR ALL VISIBLE IMPROVEMENTS WITHIN 500' OF THE DISTURBED AREA.
4. SURFACE USE: CROPLAND.
5. INSTRUMENT OPERATOR: ANTONIO SMITH.
6. THE NEAREST EXISTING WELL: IRVINE 1, 194' NE.

IN ACCORDANCE WITH A REQUEST FROM MATT VERBIT WITH NOBLE ENERGY INC., R&R ENGINEERS-SURVEYORS, INC. HAS DETERMINED THE SURFACE HOLE LOCATION OF THE MACH ONE E01-678 WELL TO BE 739' FROM THE NORTH LINE AND 2310' FROM THE EAST LINE AS MEASURED AT RIGHT ANGLES FROM THE SECTION LINES OF SECTION 2, TOWNSHIP 6 NORTH, RANGE 65 WEST, AND THE BOTTOM HOLE LOCATION TO BE 765' FROM THE NORTH LINE AND 940' FROM THE EAST LINE AS MEASURED AT RIGHT ANGLES FROM THE SECTION LINES OF SECTION 1, TOWNSHIP 6 NORTH, RANGE 65 WEST OF THE 6TH PRINCIPAL MERIDIAN, WELD COUNTY, COLORADO.

I HEREBY CERTIFY THAT THIS WELL LOCATION CERTIFICATE WAS PREPARED BY ME, OR UNDER MY DIRECT SUPERVISION, THAT THE FIELD WORK WAS COMPLETED ON 11/10/2014, FOR AND ON BEHALF OF NOBLE ENERGY INC., THAT IT IS NOT A LAND SURVEY PLAT OR AN IMPROVEMENT SURVEY PLAT, AND THAT IT IS NOT TO BE RELIED UPON FOR ESTABLISHMENT OF FENCES, BUILDINGS, OR OTHER FUTURE IMPROVEMENT LINES.

## SURFACE HOLE LOCATION

LATITUDE: N 40.52073°  
LONGITUDE: W 104.62890°  
PDOP: 1.5  
ELEVATION: 4824'  
1/4-1/4: NW 1/4 NE 1/4

## BOTTOM HOLE LOCATION

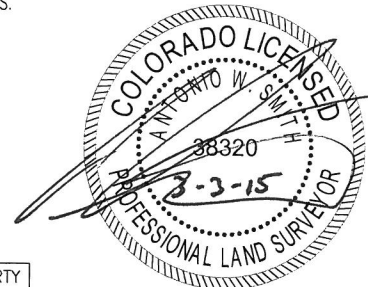
LATITUDE: N 40.52008°  
LONGITUDE: W 104.60493°

## LEGEND

- ⊗ PROPOSED WELL ⊕ FOUND MONUMENT  
⊙ BOTTOM HOLE ⊙ EXISTING WELL



0 1000'  
SCALE: 1" = 1000'



MEASURED FROM THE	BUILDING	BUILDING UNIT	HIGH OCCUPANCY BUILDING UNIT	DESIGNATED OUTSIDE ACTIVITY AREA	PUBLIC ROAD	ABOVEGROUND UTILITY	RAILROAD	PROPERTY LINE
PROPOSED WELLHEAD	417' N	635' NW	5280'+	5280'+	729' N (CR 74)	589' NW	5280'+	48' E

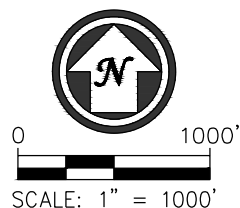
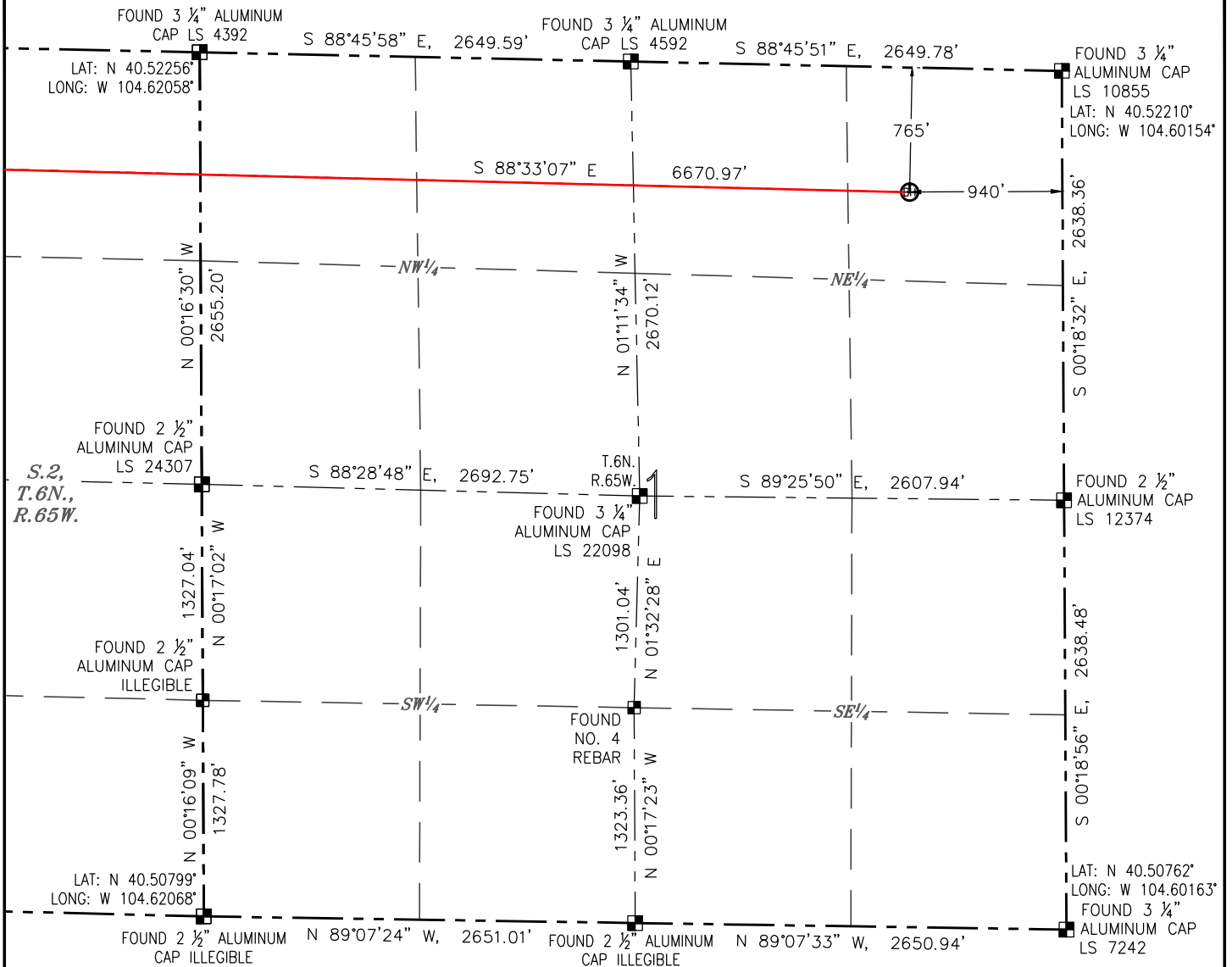
ANTONIO W. SMITH, PLS 38320  
FOR AND ON BEHALF OF R&R ENGINEERS-SURVEYORS, INC. DATE: 02/27/2015  
JOB NO.: NE14300.1

TOP: 735 FNL, 1724 FEL Sec 2

# WELL LOCATION CERTIFICATE

MACH ONE E01-678  
(SHEET 2 OF 2)

SECTION: 2  
TOWNSHIP: 6N  
RANGE: 65W



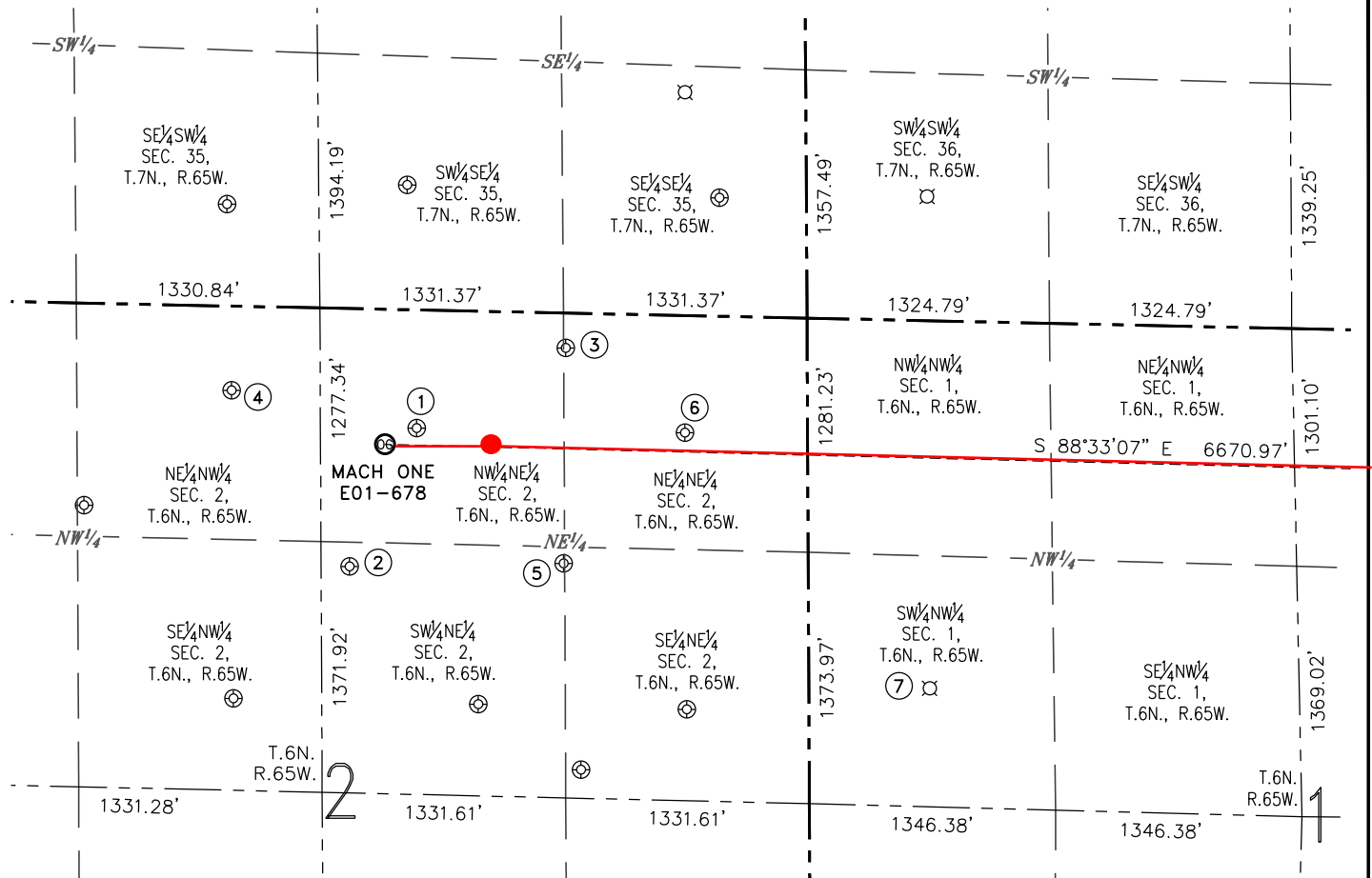
- LEGEND
- PROPOSED WELL
  - EXISTING WELL
  - BOTTOM HOLE
  - FOUND MONUMENT

# SITE SKETCH

## MACH ONE E01-678

(SHEET 1 OF 2)

SECTION: 2  
TOWNSHIP: 6N  
RANGE: 65W



① IRVINE 1  
NW $\frac{1}{4}$ NE $\frac{1}{4}$   
647' FNL  
2137' FEL  
LAT: N 40.52096°  
LONG: W 104.62828°  
PDOP: 1.8  
ELEV: 4819'

② IRVINE PC E 02-18  
SW $\frac{1}{4}$ NE $\frac{1}{4}$   
1410' FNL  
2507' FEL  
LAT: N 40.51890°  
LONG: W 104.62962°  
PDOP: 1.9  
ELEV: 4831'

③ IRVINE PC E 02-27  
NE $\frac{1}{4}$ NE $\frac{1}{4}$   
192' FNL  
1320' FEL  
LAT: N 40.52214°  
LONG: W 104.62534°  
PDOP: 2.2  
ELEV: 4799'

④ ANDERSON E 2-3  
NE $\frac{1}{4}$ NW $\frac{1}{4}$   
461' FNL  
2175' FWL  
LAT: N 40.52156°  
LONG: W 104.63191°  
PDOP: 1.9  
ELEV: 4841'

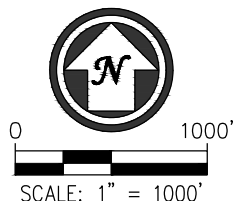
⑤ IRVINE 02-15  
SW $\frac{1}{4}$ NE $\frac{1}{4}$   
1369' FNL  
1338' FEL  
LAT: N 40.51891°  
LONG: W 104.62542°  
PDOP: 1.9  
ELEV: 4811'

⑥ IRVINE 2-11  
NE $\frac{1}{4}$ NE $\frac{1}{4}$   
641' FNL  
671' FEL  
LAT: N 40.52086°  
LONG: W 104.62301°  
PDOP: 2.0  
ELEV: 4792'

⑦ VOGLER 1-1  
SW $\frac{1}{4}$ NW $\frac{1}{4}$   
PER COGCC:  
2010' FNL  
660' FWL  
PLUGGED &  
ABANDONED

### NOTES:

- THIS SKETCH DOES NOT REPRESENT A BOUNDARY SURVEY.
- HORIZONTAL DATUM IS NAD 83.
- VERTICAL DATUM IS NAVD 88.



### LEGEND

- ⊗ PROPOSED WELL
- ⊙ EXISTING WELL
- ⊕ BOTTOM HOLE
- ⊘ ABANDONED WELL

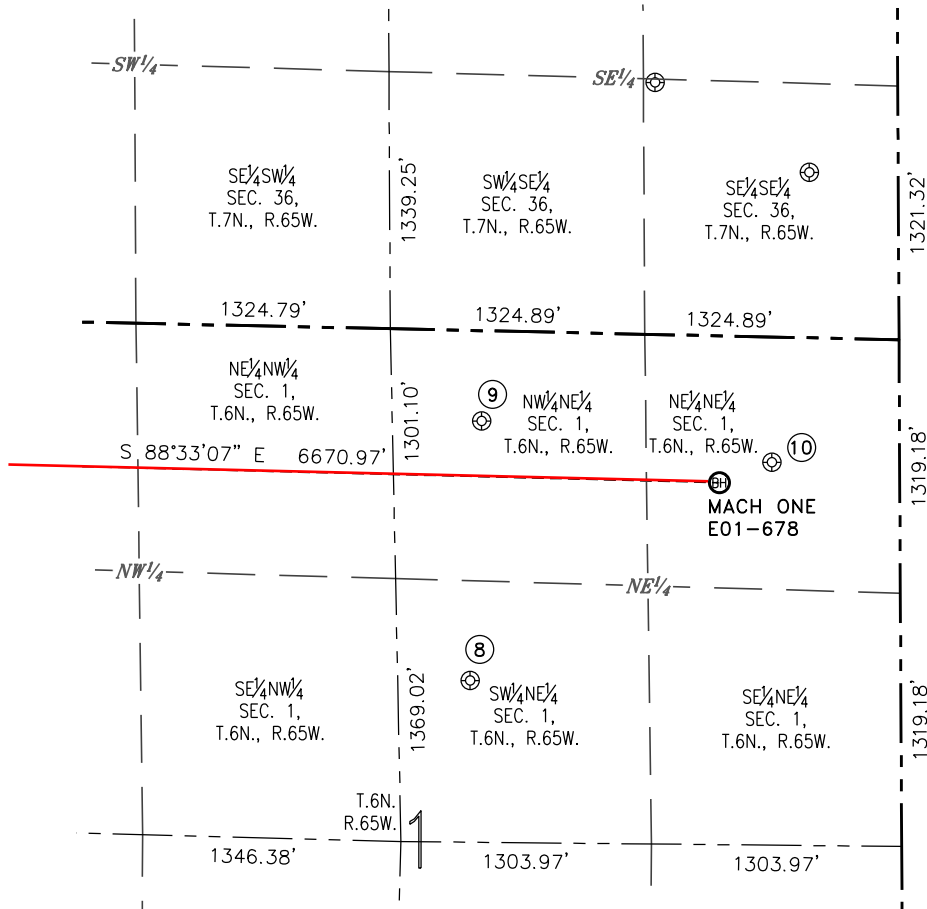
DATE: 02/27/2015  
JOB NO.: NE14300.1

# SITE SKETCH

## MACH ONE E01-678

(SHEET 2 OF 2)

SECTION: 2  
TOWNSHIP: 6N  
RANGE: 65W



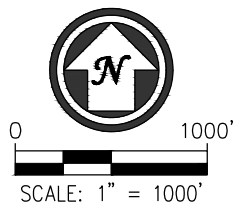
⑧ BAY FAMILY TRUST 32-1  
SW $\frac{1}{4}$ NE $\frac{1}{4}$   
1882' FNL  
2244' FEL  
LAT: N 40.51729°  
LONG: W 104.60964°  
PDOP: 2.8  
ELEV: 4742'

⑨ FABRIZIUS 31-1  
NW $\frac{1}{4}$ NE $\frac{1}{4}$   
471' FNL  
2177' FEL  
LAT: N 40.52100°  
LONG: W 104.60937°  
PDOP: 2.2  
ELEV: 4774'

⑩ FABRIZIUS 41-1  
NE $\frac{1}{4}$ NE $\frac{1}{4}$   
653' FNL  
665' FEL  
LAT: N 40.52036°  
LONG: W 104.60394°  
PDOP: 1.7  
ELEV: 4783'

### NOTES:

1. THIS SKETCH DOES NOT REPRESENT A BOUNDARY SURVEY.
2. HORIZONTAL DATUM IS NAD 83.
3. VERTICAL DATUM IS NAVD 88.



### LEGEND

- |                 |                  |
|-----------------|------------------|
| ⊗ PROPOSED WELL | ⊕ BOTTOM HOLE    |
| ⊙ EXISTING WELL | ⊠ ABANDONED WELL |

DATE: 02/27/2015  
JOB NO.: NE14300.1