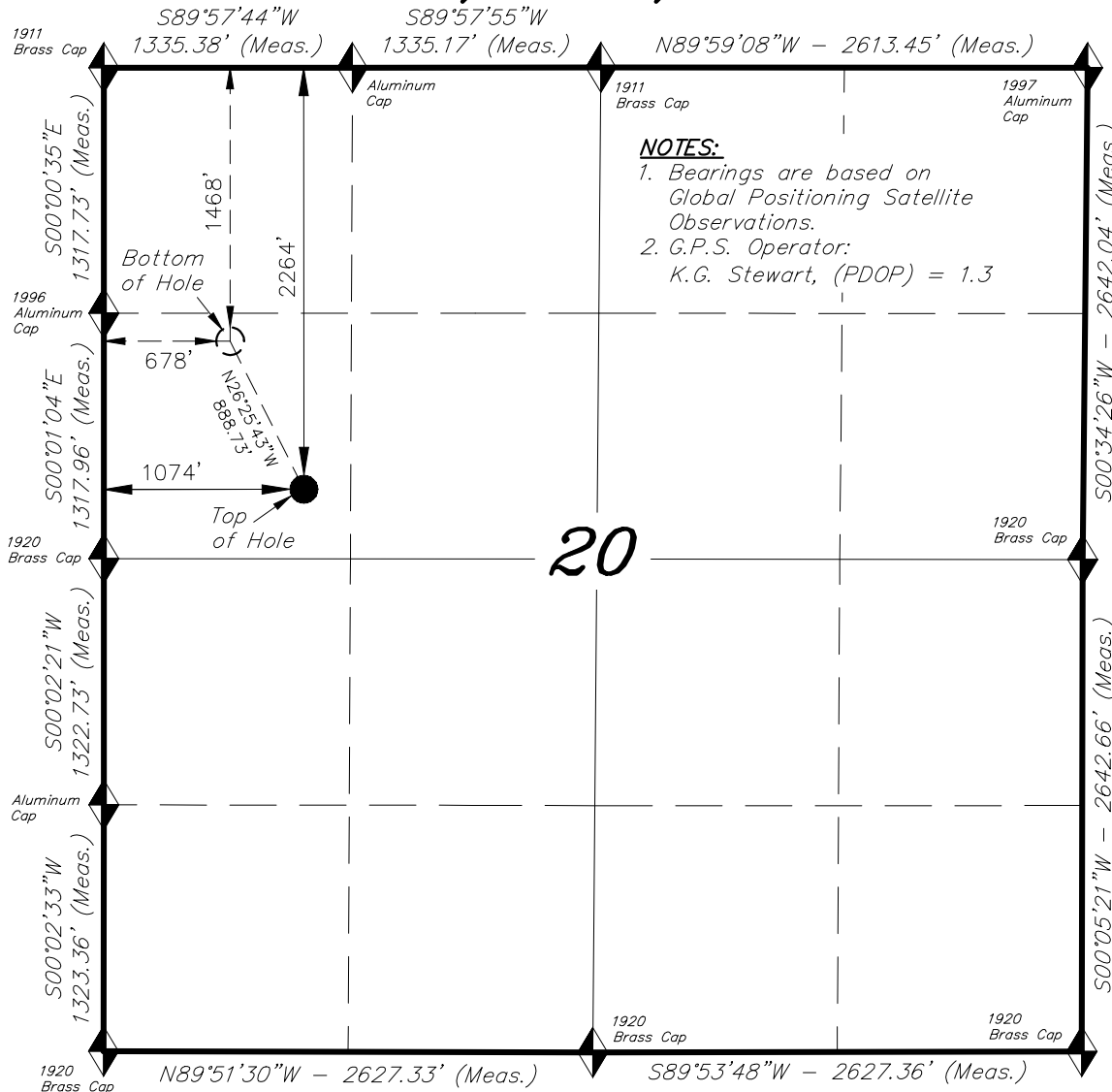


T7S, R94W, 6th P.M.

CAERUS OIL & GAS LLC

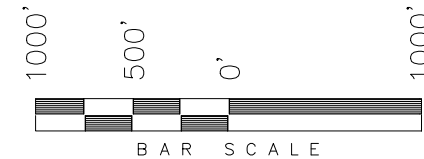


NOTES:

1. Bearings are based on Global Positioning Satellite Observations.
2. G.P.S. Operator: K.G. Stewart, (PDOP) = 1.3

WELL LOCATION, LONG 12A-20
LOCATED AS SHOWN IN THE SW 1/4
NW 1/4 OF SECTION 20, T7S, R94W,
6th P.M. GARFIELD COUNTY, COLORADO.

TARGET BOTTOM HOLE, LONG 12A-20,
LOCATED AS SHOWN IN THE SW 1/4
NW 1/4 OF SECTION 20, T7S, R94W,
6th P.M. GARFIELD COUNTY, COLORADO.



◆ = SECTION CORNERS LOCATED

**WELL LOCATION:
LONG 12A-20**

ELEV. EXIST. GRADED GROUND = 7905'

THIS IS TO CERTIFY THAT THE ABOVE PLAT WAS
PREPARED FROM FIELD NOTES OF REALITY SURVEYS
MADE BY ME OR UNDER MY SUPERVISION. THE
LOCATION HAS BEEN STAKED ON THE GROUND AS
SHOWN ON THE PLAT, AND THAT THE SAME ARE
TRUE AND CORRECT TO THE BEST OF MY
KNOWLEDGE AND BELIEF.

10-12-15
30125
REGISTERED LAND SURVEYOR
REGISTRATION NO. 30125
STATE OF COLORADO

IMPROVEMENT NOTE:

See addendum to legal plat
(Sheet 2) for visible improvements
within 500' of the proposed location.

BASIS OF ELEV;

Elevations are based on
an N.G.S. OPUS Correction.
LOCATION: LAT. 40°46'03.41"
LONG. 103°46'26.97"(Tristate Aluminum
Cap) NAVD 88 Elev. 4750.22'

NAD 83 (SURFACE LOCATION)		NAD 83 (BOTTOM HOLE)	
LATITUDE = 39°25'31.82" (39.425505)		LATITUDE = 39°25'39.68" (39.427689)	
LONGITUDE = 107°54'56.33" (107.915646)		LONGITUDE = 107°55'01.36" (107.917046)	
UTM ZONE N12 FEET		UTM ZONE N12 FEET	
N: = 14332444.427	E: = 2511470.146	N: = 14333226.367	E: = 2511047.575
NAD 27 (SURFACE LOCATION)		NAD 27 (BOTTOM HOLE)	
LATITUDE = 39°25'31.89" (39.425526)		LATITUDE = 39°25'39.76" (39.427710)	
LONGITUDE = 107°54'54.08" (107.915022)		LONGITUDE = 107°54'59.12" (107.916421)	
UTM ZONE N12 FEET		UTM ZONE N12 FEET	
N: = 14331773.272	E: = 2511668.865	N: = 14332555.200	E: = 2511246.300

TRI STATE LAND SURVEYING & CONSULTING

180 NORTH VERNAL AVE. - VERNAL, UTAH 84078
(435) 781-2501

DATE SURVEYED: 07-15-15	SURVEYED BY: K.G.S.	SHEET 1h
DATE DRAWN: 08-21-15	DRAWN BY: F.T.M.	
REVISED: 10-12-15 F.T.M.	SCALE: 1" = 1000'	