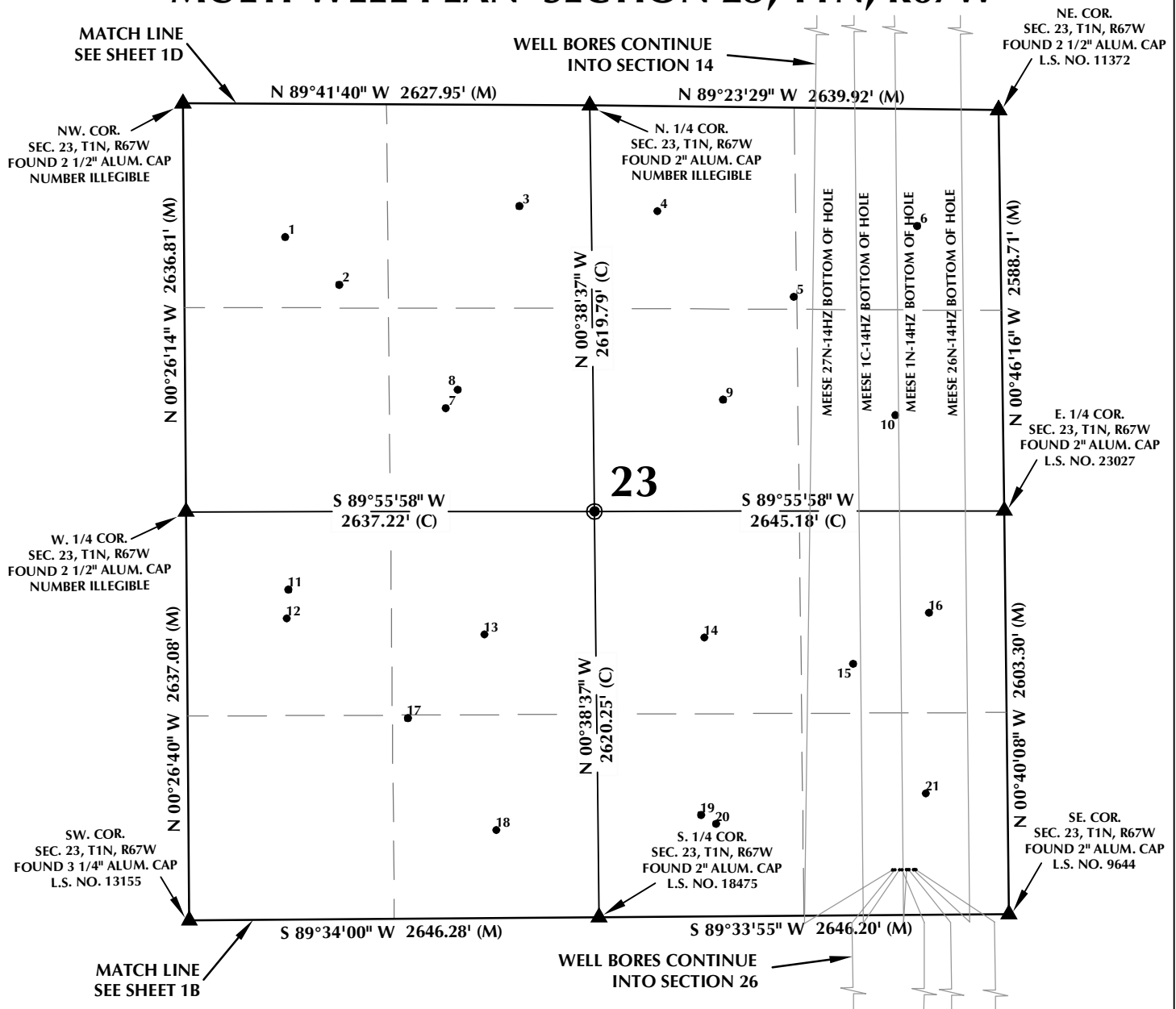


# MULTI-WELL PLAN SECTION 23, T1N, R67W



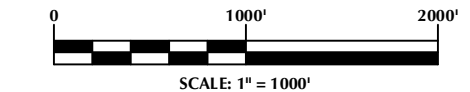
## WELL NOTES:

**MEESE 27N-14HZ**  
 SURFACE: 291' FSL, 747' FEL  
 BOTTOM HOLE: 700' FSL, 1165' FEL  
**MEESE 37C-35HZ**  
 SURFACE: 291' FSL, 732' FEL  
 BOTTOM HOLE: 666' FSL, 932' FEL  
**MEESE 1C-14HZ**  
 SURFACE: 291' FSL, 702' FEL  
 BOTTOM HOLE: 700' FSL, 927' FEL  
**MEESE 16N-35HZ**  
 SURFACE: 291' FSL, 687' FEL  
 BOTTOM HOLE: 465' FSL, 652' FEL  
**MEESE 1N-14HZ**  
 SURFACE: 291' FSL, 657' FEL  
 BOTTOM HOLE: 700' FSL, 666' FEL

**MEESE STATE 38C-35HZ**  
 SURFACE: 291' FSL, 642' FEL  
 BOTTOM HOLE: 465' FSL, 355' FEL  
**MEESE 26N-14HZ**  
 SURFACE: 291' FSL, 612' FEL  
 BOTTOM HOLE: 700' FSL, 241' FEL  
**MEESE STATE 38N-35HZ**  
 SURFACE: 291' FSL, 597' FEL  
 BOTTOM HOLE: 465' FSL, 72' FEL

## NOTES:

1. ▲ INDICATES FOUND SECTION CORNER
2. ● INDICATES CALCULATED CORNER
3. BASIS OF BEARING DERIVED FROM COLORADO COORDINATE SYSTEM 1983 NORTH ZONE UNLESS OTHERWISE NOTED.
4. ALL MEASURED DISTANCES ARE GRID.
5. COMBINED SCALE FACTOR: .99972876



## WELL PAD - MEESE 16N-35HZ

MULTI-WELL PLAN  
 MEESE 27N-14HZ, MEESE 37C-35HZ,  
 MEESE 1C-14HZ, MEESE 16N-35HZ,  
 MEESE 1N-14HZ, MEESE STATE 38C-35HZ,  
 MEESE 26N-14HZ & MEESE STATE 38N-35HZ  
 LOCATED IN SECTIONS 14, 23, 26 & 35  
 T1N, R67W, 6TH P.M.  
 WELD COUNTY, COLORADO

**Kerr-McGee Oil &  
 Gas Onshore L.P.**  
 1099 18th Street  
 Denver, Colorado 80202



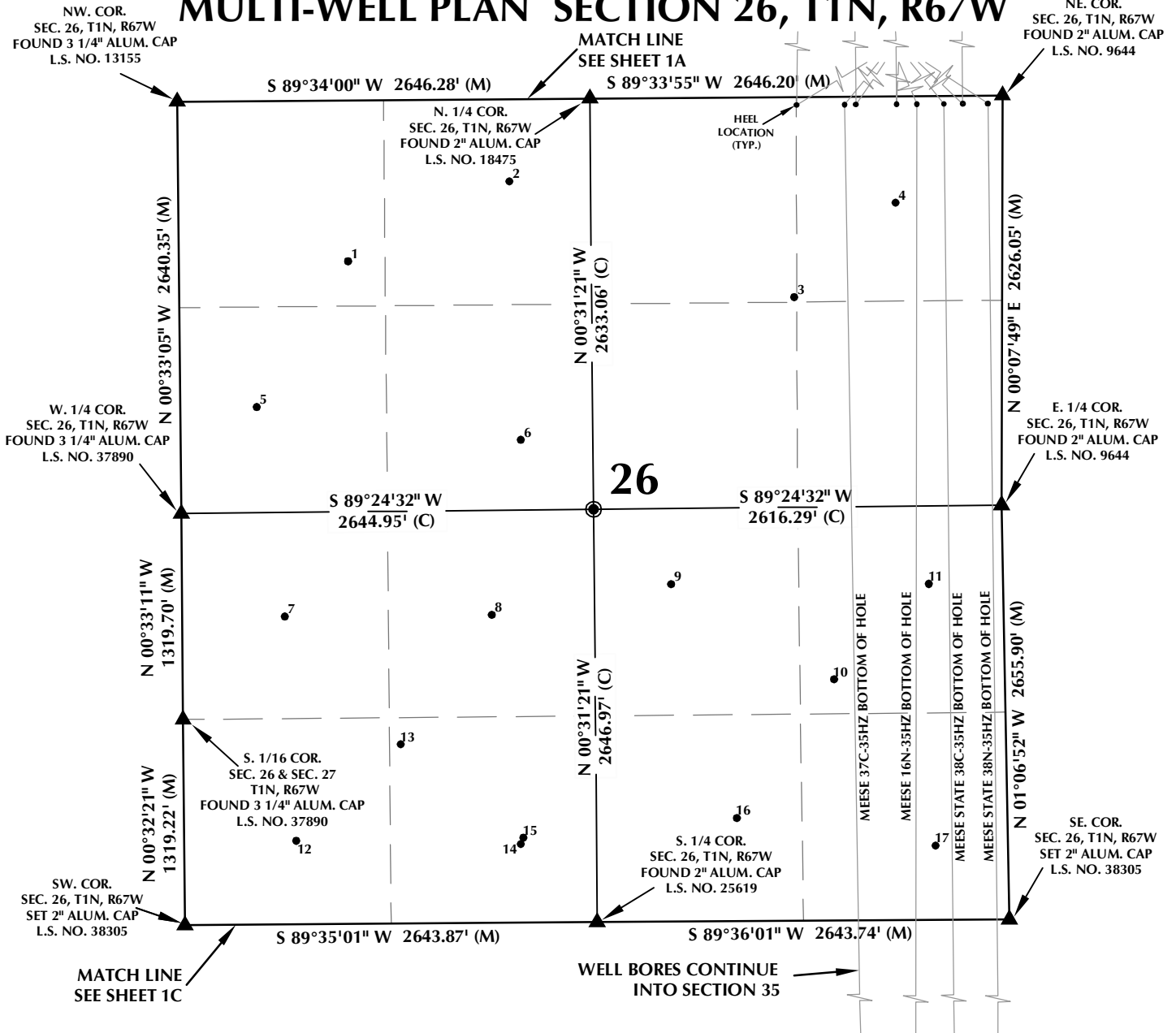
## CONSULTING, LLC

**SHERIDAN OFFICE**  
 1095 Saberton Avenue  
 Sheridan, Wyoming 82801  
 Phone 307-674-0609

**LOVELAND OFFICE**  
 1635 Foxtrail Drive, Suite 204  
 Loveland, Colorado 80538  
 Phone 970-776-4331

DRAFTED BY:	LMO	CHECKED BY:	BJR	SHEET NO:
DATE DRAFTED:	8/5/15	DATE SURVEYED:	5/7/15	<b>1A</b>
REVISED:		FILE NAME:	15-42	1A OF 2

# MULTI-WELL PLAN SECTION 26, T1N, R67W



## WELL NOTES:

**MEESE 27N-14HZ**  
SURFACE: 291' FSL, 747' FEL  
BOTTOM HOLE: 700' FSL, 1165' FEL

**MEESE 37C-35HZ**  
SURFACE: 291' FSL, 732' FEL  
BOTTOM HOLE: 666' FSL, 932' FEL

**MEESE 1C-14HZ**  
SURFACE: 291' FSL, 702' FEL  
BOTTOM HOLE: 700' FSL, 927' FEL

**MEESE 16N-35HZ**  
SURFACE: 291' FSL, 687' FEL  
BOTTOM HOLE: 465' FSL, 652' FEL

**MEESE 1N-14HZ**  
SURFACE: 291' FSL, 657' FEL  
BOTTOM HOLE: 700' FSL, 666' FEL

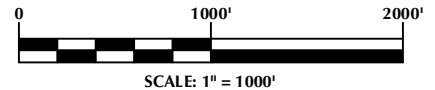
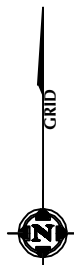
**MEESE STATE 38C-35HZ**  
SURFACE: 291' FSL, 642' FEL  
BOTTOM HOLE: 465' FSL, 355' FEL

**MEESE 26N-14HZ**  
SURFACE: 291' FSL, 612' FEL  
BOTTOM HOLE: 700' FSL, 241' FEL

**MEESE STATE 38N-35HZ**  
SURFACE: 291' FSL, 597' FEL  
BOTTOM HOLE: 465' FSL, 72' FEL

## NOTES:

1. ▲ INDICATES FOUND SECTION CORNER
2. ● INDICATES CALCULATED CORNER
3. BASIS OF BEARING DERIVED FROM COLORADO COORDINATE SYSTEM 1983 NORTH ZONE UNLESS OTHERWISE NOTED.
4. ALL MEASURED DISTANCES ARE GRID.
5. COMBINED SCALE FACTOR: .99972876
6. WELL FOOTAGES ARE MEASURED AT RIGHT ANGLES TO THE SECTION LINES.



## WELL PAD - MEESE 16N-35HZ

**MULTI-WELL PLAN**  
MEESE 27N-14HZ, MEESE 37C-35HZ,  
MEESE 1C-14HZ, MEESE 16N-35HZ,  
MEESE 1N-14HZ, MEESE STATE 38C-35HZ,  
MEESE 26N-14HZ & MEESE STATE 38N-35HZ  
LOCATED IN SECTIONS 14, 23, 26 & 35  
T1N, R67W, 6TH P.M.  
WELD COUNTY, COLORADO

**Kerr-McGee Oil &  
Gas Onshore L.P.**  
1099 18th Street  
Denver, Colorado 80202



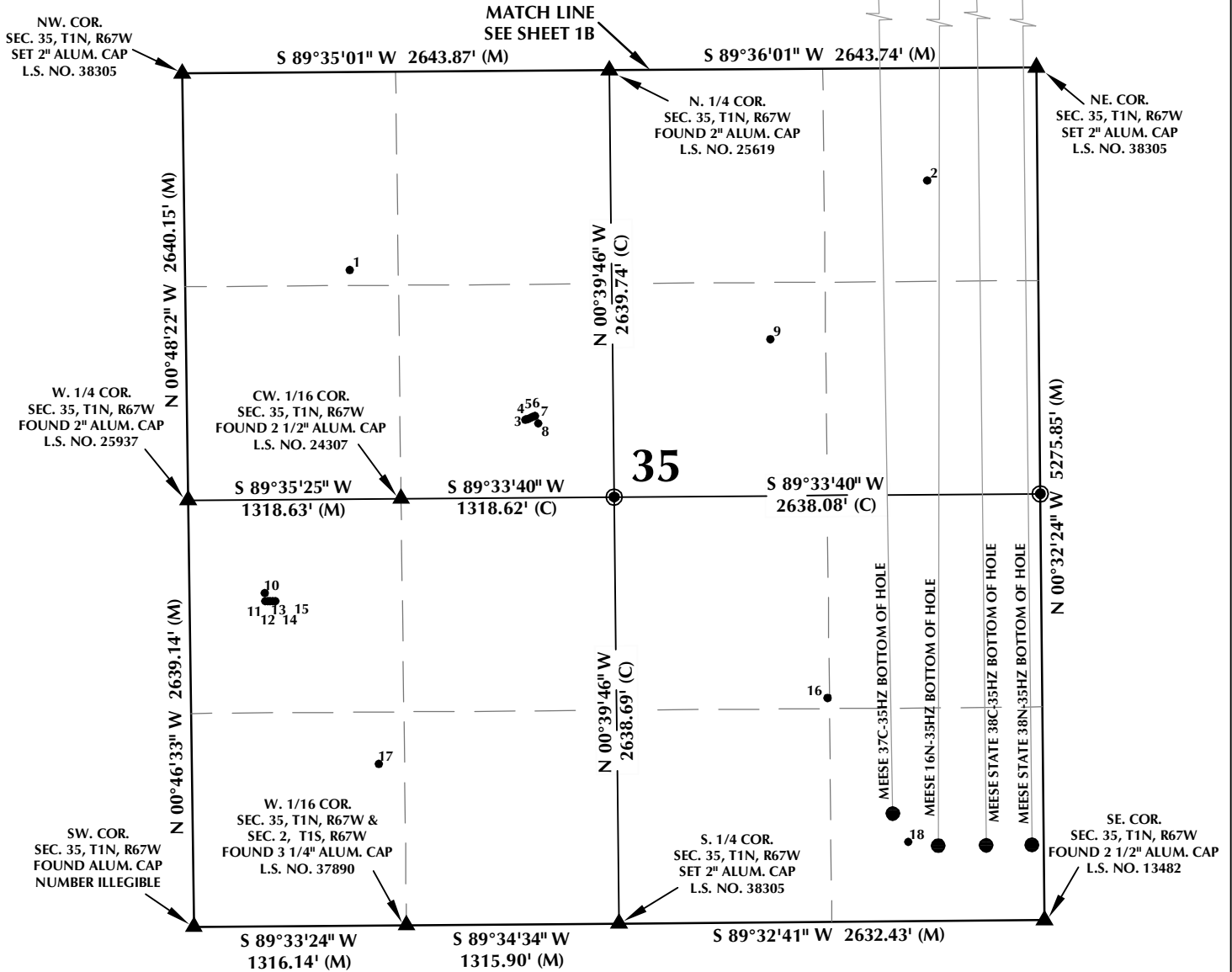
## CONSULTING, LLC

**SHERIDAN OFFICE**  
1095 Saberton Avenue  
Sheridan, Wyoming 82801  
Phone 307-674-0609

**LOVELAND OFFICE**  
1635 Foxtrail Drive, Suite 204  
Loveland, Colorado 80538  
Phone 970-776-4331

DRAFTED BY:	LMO	CHECKED BY:	BJR	SHEET NO:
DATE DRAFTED:	8/5/15	DATE SURVEYED:	5/7/15	<b>1B</b>
REVISED:		FILE NAME:	15-42	1B OF 2

# MULTI-WELL PLAN SECTION 35, T1N, R67W



## WELL NOTES:

**MEESE 27N-14HZ**  
SURFACE: 291' FSL, 747' FEL  
BOTTOM HOLE: 700' FSL, 1165' FEL

**MEESE 37C-35HZ**  
SURFACE: 291' FSL, 732' FEL  
BOTTOM HOLE: 666' FSL, 932' FEL

**MEESE 1C-14HZ**  
SURFACE: 291' FSL, 702' FEL  
BOTTOM HOLE: 700' FSL, 927' FEL

**MEESE 16N-35HZ**  
SURFACE: 291' FSL, 687' FEL  
BOTTOM HOLE: 465' FSL, 652' FEL

**MEESE 1N-14HZ**  
SURFACE: 291' FSL, 657' FEL  
BOTTOM HOLE: 700' FSL, 666' FEL

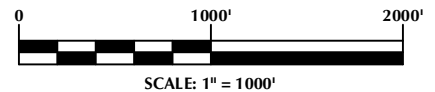
**MEESE STATE 38C-35HZ**  
SURFACE: 291' FSL, 642' FEL  
BOTTOM HOLE: 465' FSL, 355' FEL

**MEESE 26N-14HZ**  
SURFACE: 291' FSL, 612' FEL  
BOTTOM HOLE: 700' FSL, 241' FEL

**MEESE STATE 38N-35HZ**  
SURFACE: 291' FSL, 597' FEL  
BOTTOM HOLE: 465' FSL, 72' FEL

## NOTES:

1. INDICATES FOUND SECTION CORNER
2. INDICATES CALCULATED CORNER
3. BASIS OF BEARING DERIVED FROM COLORADO COORDINATE SYSTEM 1983 NORTH ZONE UNLESS OTHERWISE NOTED.
4. ALL MEASURED DISTANCES ARE GRID.
5. WELL FOOTAGES ARE MEASURED AT RIGHT ANGLES TO THE SECTION LINES.



## WELL PAD - MEESE 16N-35HZ

**MULTI-WELL PLAN**  
MEESE 27N-14HZ, MEESE 37C-35HZ,  
MEESE 1C-14HZ, MEESE 16N-35HZ,  
MEESE 1N-14HZ, MEESE STATE 38C-35HZ,  
MEESE 26N-14HZ & MEESE STATE 38N-35HZ  
LOCATED IN SECTIONS 14, 23, 26 & 35  
T1N, R67W, 6TH P.M.  
WELD COUNTY, COLORADO

**Kerr-McGee Oil &  
Gas Onshore L.P.**  
1099 18th Street  
Denver, Colorado 80202



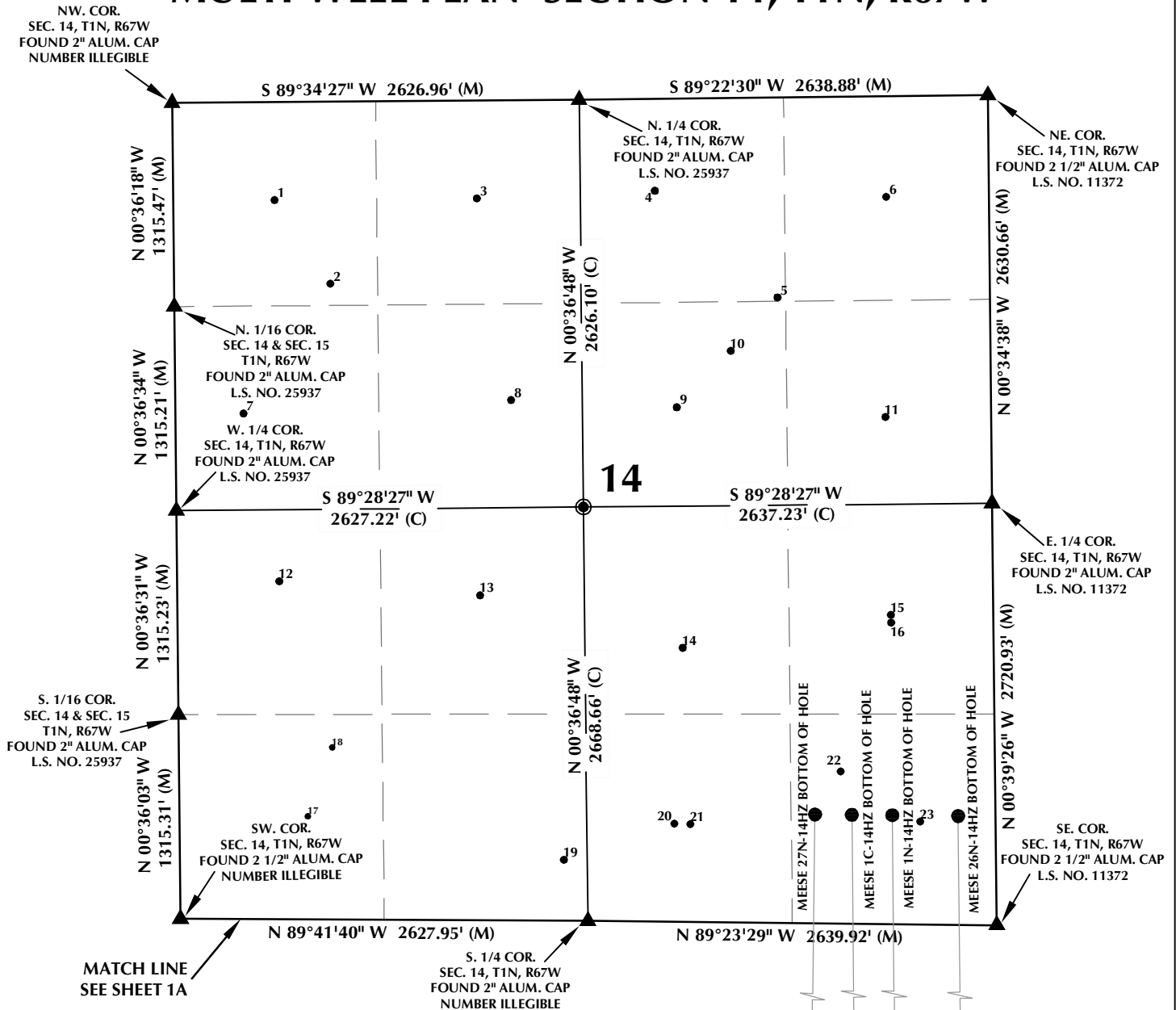
## CONSULTING, LLC

**SHERIDAN OFFICE**  
1095 Saberton Avenue  
Sheridan, Wyoming 82801  
Phone 307-674-0609

**LOVELAND OFFICE**  
1635 Foxtrail Drive, Suite 204  
Loveland, Colorado 80538  
Phone 970-776-4331

DRAFTED BY:	LMO	CHECKED BY:	BJR	SHEET NO:
DATE DRAFTED:	8/5/15	DATE SURVEYED:	5/7/15	1C
REVISED:		FILE NAME:	15-42	1C OF 2

# MULTI-WELL PLAN SECTION 14, T1N, R67W



## WELL NOTES:

**MEESE 27N-14HZ**  
SURFACE: 291' FSL, 747' FEL  
BOTTOM HOLE: 700' FSL, 1165' FEL

**MEESE 37C-35HZ**  
SURFACE: 291' FSL, 732' FEL  
BOTTOM HOLE: 666' FSL, 932' FEL

**MEESE 1C-14HZ**  
SURFACE: 291' FSL, 702' FEL  
BOTTOM HOLE: 700' FSL, 927' FEL

**MEESE 16N-35HZ**  
SURFACE: 291' FSL, 687' FEL  
BOTTOM HOLE: 465' FSL, 652' FEL

**MEESE 1N-14HZ**  
SURFACE: 291' FSL, 657' FEL  
BOTTOM HOLE: 700' FSL, 666' FEL

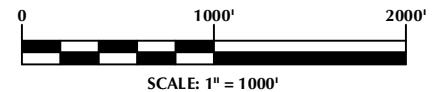
**MEESE STATE 38C-35HZ**  
SURFACE: 291' FSL, 642' FEL  
BOTTOM HOLE: 465' FSL, 355' FEL

**MEESE 26N-14HZ**  
SURFACE: 291' FSL, 612' FEL  
BOTTOM HOLE: 700' FSL, 241' FEL

**MEESE STATE 38N-35HZ**  
SURFACE: 291' FSL, 597' FEL  
BOTTOM HOLE: 465' FSL, 72' FEL

## NOTES:

1. INDICATES FOUND SECTION CORNER
2. INDICATES CALCULATED CORNER
3. BASIS OF BEARING DERIVED FROM COLORADO COORDINATE SYSTEM 1983 NORTH ZONE UNLESS OTHERWISE NOTED.
4. ALL MEASURED DISTANCES ARE GRID.
5. COMBINED SCALE FACTOR: .99972876
6. WELL FOOTAGES ARE MEASURED AT RIGHT ANGLES TO THE SECTION LINES.



## WELL PAD - MEESE 16N-35HZ

**MULTI-WELL PLAN**  
MEESE 27N-14HZ, MEESE 37C-35HZ,  
MEESE 1C-14HZ, MEESE 16N-35HZ,  
MEESE 1N-14HZ, MEESE STATE 38C-35HZ,  
MEESE 26N-14HZ & MEESE STATE 38N-35HZ  
LOCATED IN SECTIONS 14, 23, 26 & 35  
T1N, R67W, 6TH P.M.  
WELD COUNTY, COLORADO

**Kerr-McGee Oil &  
Gas Onshore L.P.**  
1099 18th Street  
Denver, Colorado 80202



## CONSULTING, LLC

**SHERIDAN OFFICE**  
1095 Saberton Avenue  
Sheridan, Wyoming 82801  
Phone 307-674-0609

**LOVELAND OFFICE**  
1635 Foxtrail Drive, Suite 204  
Loveland, Colorado 80538  
Phone 970-776-4331

DRAFTED BY:	LMO	CHECKED BY:	BJR	SHEET NO:
DATE DRAFTED:	8/5/15	DATE SURVEYED:	5/7/15	<b>1D</b>
REVISED:		FILE NAME:	15-42	1D OF 2

# MULTI-WELL PLAN

## SECTION 23, T1N, R67W

NUMBER	WELL NAME	API NUMBER	LATITUDE (NAD 83)	LONGITUDE (NAD 83)	SURFACE ELEVATION	TOTAL DEPTH
1	THREE FARMS 11-23	05-123-15962	40.041454	-104.864950	4965.7	4884
2	DOROTHY SEBOLD UNIT-TRUE 1	05-123-11254	40.040604	-104.863711	4960.4	8215
3	STIEBER, EDWARD 1	05-123-10115	40.041974	-104.859542	4957.1	4858
4	*HUETT FRED L 2	05-123-09676	40.041868	-104.856351	4950.0	4856
5	JOSEPH HUETT UNIT 1	05-123-07805	40.040330	-104.853224	4948.1	8151
6	*FRED L HUETT 1	05-123-09572	40.041568	-104.850371	4937.0	4910
7	*T. A. PAIGE 1	05-123-09817	40.038408	-104.861271	4948.0	4890
8	*PAIGE, ANSON T 2	05-123-10351	40.038728	-104.860991	4948.0	4989
9	JOSEPH L HUETT UNIT C 1	05-123-09671	40.038517	-104.854872	4947.7	4889
10	*HUETT JOSEPH B 1	05-123-09480	40.038218	-104.850901	4944.0	4888
11	TANG 1	05-123-09559	40.035207	-104.864931	4964.9	4900
12	*LEONA 1	05-123-10475	40.034698	-104.864971	4964.0	7752
13	SEBOLD, DOROTHY B-1	05-123-10126	40.034388	-104.860416	4984.9	4964
14	WATTENBERG, HENRY E B-1	05-123-09678	40.034308	-104.855346	4976.5	4900
15	HUETT, JOSEPH UNIT 2	05-123-10905	40.033821	-104.851916	4977.7	8263
16	*HENRY E WATTENBURG UNIT 1	05-123-09621	40.034718	-104.850161	4977.0	4905
17	DOROTHY SEBOLD UNIT 1	05-213-08119	40.032913	-104.862198	4988.4	8240
18	SEBOLD, DOROTHY B-2	05-123-10234	40.030923	-104.860176	4993.9	4985
19	WATTENBERG HENRY E UT B 2	05-123-10113	40.031156	-104.855446	4991.5	4998
20	ZEHNDER 15-23A	05-123-20692	40.031002	-104.855107	4990.0	8275
21	WATTENBERG, HENRY E. UNIT C-1	05-123-10112	40.031515	-104.850265	4983.8	4970

### NOTES:

- \* INDICATES EXISTING WELLS THAT WERE NOT SURVEYED BUT DERIVED FROM COLORADO OIL AND GAS CONSERVATION COMMISSION (COGCC).

**EXISTING WELL EXHIBIT  
SECTION 23, T1N, R67W, 6TH P.M.  
WELD COUNTY, COLORADO**

**Kerr-McGee Oil &  
Gas Onshore L.P.**  
1099 18th Street  
Denver, Colorado 80202



### CONSULTING, LLC

**SHERIDAN OFFICE**  
1095 Saberton Avenue  
Sheridan, Wyoming 82801  
Phone 307-674-0609

**LOVELAND OFFICE**  
1635 Foxtrail Drive, Suite 204  
Loveland, Colorado 80538  
Phone 970-776-4331

DRAFTED BY:	LMO	CHECKED BY:	BJR	SHEET NO:
DATE DRAFTED:	7/13/15	DATE SURVEYED:	5/15/15	<b>2A</b>
REVISED:		FILE NAME:	15-42	2A OF 2

# MULTI-WELL PLAN

## SECTION 26, T1N, R67W

NUMBER	WELL NAME	API NUMBER	LATITUDE (NAD 83)	LONGITUDE (NAD 83)	SURFACE ELEVATION	TOTAL DEPTH
1	MOSER C UNIT 1	05-123-10488	40.026532	-104.863383	5014.8	8300
2	MOSER 21-26	05-123-21533	40.027916	-104.859678	5002.5	8299
3	MOSER 1	05-123-08041	40.025844	-104.853174	5001.0	8260
4	MOSER 1-A	05-123-09700	40.027491	-104.850838	4990.7	4970
5	MOSER 12-26	05-123-21066	40.023975	-104.865500	5038.7	8341
6	SPARROW 6-26	05-123-19553	40.023366	-104.859460	5029.3	8324
7	HOWARD 13-26	05-123-19946	40.020287	-104.864892	5041.9	8340
8	HOWARD 23-26	05-123-20055	40.020289	-104.860149	5028.0	8330
9	GRENAMEYER 33-26	05-123-21341	40.020810	-104.856037	5009.1	8306
10	*GRENAMEYER E UNIT 1	05-123-10491	40.019110	-104.852320	4997.0	8310
11	GRENAMEYER 43-26	05-123-21344	40.020779	-104.850139	4988.2	8271
12	GRENAMEYER 1	05-123-07152	40.016341	-104.864662	5053.5	8315
13	GRENAMEYER CD26-A	05-123-21028	40.018025	-104.862256	5038.8	8355
14	GRENAMEYER 24-26	05-123-21027	40.016252	-104.859526	5034.9	8337
15	GRENAMEYER 4-6-26	05-123-25942	40.016366	-104.859463	5034.5	8439
16	BELL 34-26	05-123-19892	40.016682	-104.854574	5015.2	8355
17	GRENAMEYER 44-26	05-123-21343	40.016174	-104.850028	5001.3	8303

### NOTES:

- \* INDICATES EXISTING WELLS THAT WERE NOT SURVEYED BUT DERIVED FROM COLORADO OIL AND GAS CONSERVATION COMMISSION (COGCC).

**EXISTING WELL EXHIBIT  
SECTION 26, T1N, R67W, 6TH P.M.  
WELD COUNTY, COLORADO**

**Kerr-McGee Oil &  
Gas Onshore L.P.**  
1099 18th Street  
Denver, Colorado 80202



### CONSULTING, LLC

**SHERIDAN OFFICE**  
1095 Saberton Avenue  
Sheridan, Wyoming 82801  
Phone 307-674-0609

**LOVELAND OFFICE**  
1635 Foxtrail Drive, Suite 204  
Loveland, Colorado 80538  
Phone 970-776-4331

DRAFTED BY: LMO

CHECKED BY: BJR

SHEET NO:

DATE DRAFTED: 7/13/15

DATE SURVEYED: 5/15/15

**2B**

REVISED:

FILE NAME: 15-42

2B OF 2



# MULTI-WELL PLAN

## SECTION 35, T1N, R67W

NUMBER	WELL NAME	API NUMBER	LATITUDE (NAD 83)	LONGITUDE (NAD 83)	SURFACE ELEVATION	TOTAL DEPTH
1	NOEL HUBERT UNIT-TRUE 1	05-123-11440	40.011508	-104.863549	5031.7	8310
2	SAKATA 1-35	05-123-22534	40.012959	-104.850773	4998.2	8304
3	DRY CREEK 22-35	05-123-31115	40.008942	-104.859694	5010.5	8422
4	DRY CREEK 5-35	05-123-31121	40.008958	-104.859640	5010.9	8518
5	DRY CREEK 4-35	05-123-31099	40.008974	-104.859588	5010.9	8359
6	DRY CREEK 3-35	05-123-31100	40.008991	-104.859534	5010.6	8526
7	DRY CREEK 21-35	05-123-31104	40.009007	-104.859482	5011.0	8411
8	RULE 6-35A	05-123-20994	40.008882	-104.859410	5006.7	8435
9	GEORGE SCHMIDT UNIT 1	05-123-08266	40.010282	-104.854267	5005.7	8292
10	RULE 12-35A	05-123-20746	40.006032	-104.865478	5031.9	8345
11	DRY CREEK 13-35	05-123-31023	40.005898	-104.865473	5031.3	8158
12	DRY CREEK 35-35	05-123-31018	40.005896	-104.865417	5032.0	8742
13	DRY CREEK 14-35	05-123-31022	40.005895	-104.865361	5031.9	8714
14	DRY CREEK 23-35	05-123-31010	40.005896	-104.865305	5031.7	8750
15	DRY CREEK 11-35	05-123-31019	40.005895	-104.865247	5032.2	8509
16	SCHMIDT 33-35	05-123-15676	40.004183	-104.853059	5004.4	8463
17	*HUBERT NOEL 1	05-123-08019	40.003119	-104.862981	5026.0	8295
18	SCHMIDT 44-35	05-123-21414	40.001730	-104.851302	5002.6	8264

### NOTES:

- \* INDICATES EXISTING WELLS THAT WERE NOT SURVEYED BUT DERIVED FROM COLORADO OIL AND GAS CONSERVATION COMMISSION (COGCC).

**EXISTING WELL EXHIBIT  
SECTION 35, T1N, R67W, 6TH P.M.  
WELD COUNTY, COLORADO**

**Kerr-McGee Oil &  
Gas Onshore L.P.**  
1099 18th Street  
Denver, Colorado 80202



### CONSULTING, LLC

**SHERIDAN OFFICE**  
1095 Saberton Avenue  
Sheridan, Wyoming 82801  
Phone 307-674-0609

**LOVELAND OFFICE**  
1635 Foxtrail Drive, Suite 204  
Loveland, Colorado 80538  
Phone 970-776-4331

DRAFTED BY:	LMO	CHECKED BY:	BJR	SHEET NO: <b>2C</b> 2C OF 2
DATE DRAFTED:	7/13/15	DATE SURVEYED:	5/15/15	
REVISED:		FILE NAME:	15-42	

# MULTI-WELL PLAN

## SECTION 14, T1N, R67W

NUMBER	WELL NAME	API NUMBER	LATITUDE (NAD 83)	LONGITUDE (NAD 83)	SURFACE ELEVATION	TOTAL DEPTH
1	CAVANAUGH, FRANK M 3	05-123-09021	40.056544	-104.864997	5033.7	4910
2	DOVERSBERGER UNIT A 2	05-123-14855	40.055060	-104.863723	5020.6	8296
3	CAVANAUGH, FRANK M 1	05-123-07645	40.056547	-104.860334	5037.9	4890
4	DOVERSBERGER, EUGENE 3	05-123-09037	40.056660	-104.856227	4999.3	4880
5	*DOVERSBERGER EUGENE 5	05-123-13219	40.054758	-104.853421	4982.0	4910
6	DOVERSBERGER EUGENE 1A	05-123-07676	40.056522	-104.850897	4972.1	8262
7	*CAVANAUGH, FRANK M 2	05-123-08696	40.052768	-104.865752	5007.0	4910
8	CAVANAUGH, FRANK M 4	05-123-09022	40.052975	-104.859576	5009.2	4925
9	DOVERSBERGER, EUGENE 2	05-123-07715	40.052824	-104.855760	4996.2	4887
10	DOVERSBERGER UNIT A 1	05-123-07945	40.053820	-104.854503	4990.2	8139
11	*DOVERSBERGER EUGENE 4	05-123-10116	40.052628	-104.850951	4968.0	4885
12	CLARK, FRANCIS DOUGHTY 2	05-123-09094	40.049799	104.864948	4993.7	4900
13	FRANCIS DOUGHTY CLARK 1A	05-123-07817	40.049520	-104.860326	4986.9	8152
14	*HEIT ANTONE C B-2	05-123-09619	40.048568	-104.855661	4965.0	4874
15	HEIT, ANTONE C B-1	05-123-07879	40.049126	-104.850856	4959.5	4863
16	HIGHUM FOUNDERS 1	05-123-20763	40.048985	-104.850855	4958.9	8160
17	*CLARK FRANCIS DOUGHTY 5	05-123-12601	40.045638	-104.864332	4977.0	8182
18	FRANCIS D. CLARK UNIT B 1	05-123-07740	40.046851	-104.863756	4986.9	8156
19	*CLARK, FRANCIS DOUGHTY 3	05-123-09664	40.044838	-104.858431	4958.0	4890
20	NORDEN 15-14A	05-123-21083	40.045458	-104.855884	4953.1	8139
21	KIEFER GEORGE W UT B 1A	05-123-07878	40.045447	-104.855516	4952.7	4860
22	FRANCIS DOUGHTY CLARK UNIT B-	05-123-10870	40.046358	-104.852040	4952.0	8130
23	*KIEFER GEORGE W UT B 3	05-123-09616	40.045468	-104.850221	4935.0	4846

### NOTES:

- \* INDICATES EXISTING WELLS THAT WERE NOT SURVEYED BUT DERIVED FROM COLORADO OIL AND GAS CONSERVATION COMMISSION (COGCC).

**EXISTING WELL EXHIBIT  
SECTION 14, T1N, R67W, 6TH P.M.  
WELD COUNTY, COLORADO**

**Kerr-McGee Oil &  
Gas Onshore L.P.**  
1099 18th Street  
Denver, Colorado 80202



### CONSULTING, LLC

SHERIDAN OFFICE  
1095 Saberton Avenue  
Sheridan, Wyoming 82801  
Phone 307-674-0609

LOVELAND OFFICE  
1635 Foxtrail Drive, Suite 204  
Loveland, Colorado 80538  
Phone 970-776-4331

DRAFTED BY:	LMO	CHECKED BY:	BJR	<b>2D</b> SHEET NO: 2D OF 2
DATE DRAFTED:	7/13/15	DATE SURVEYED:	5/15/15	
REVISED:		FILE NAME:	15-42	