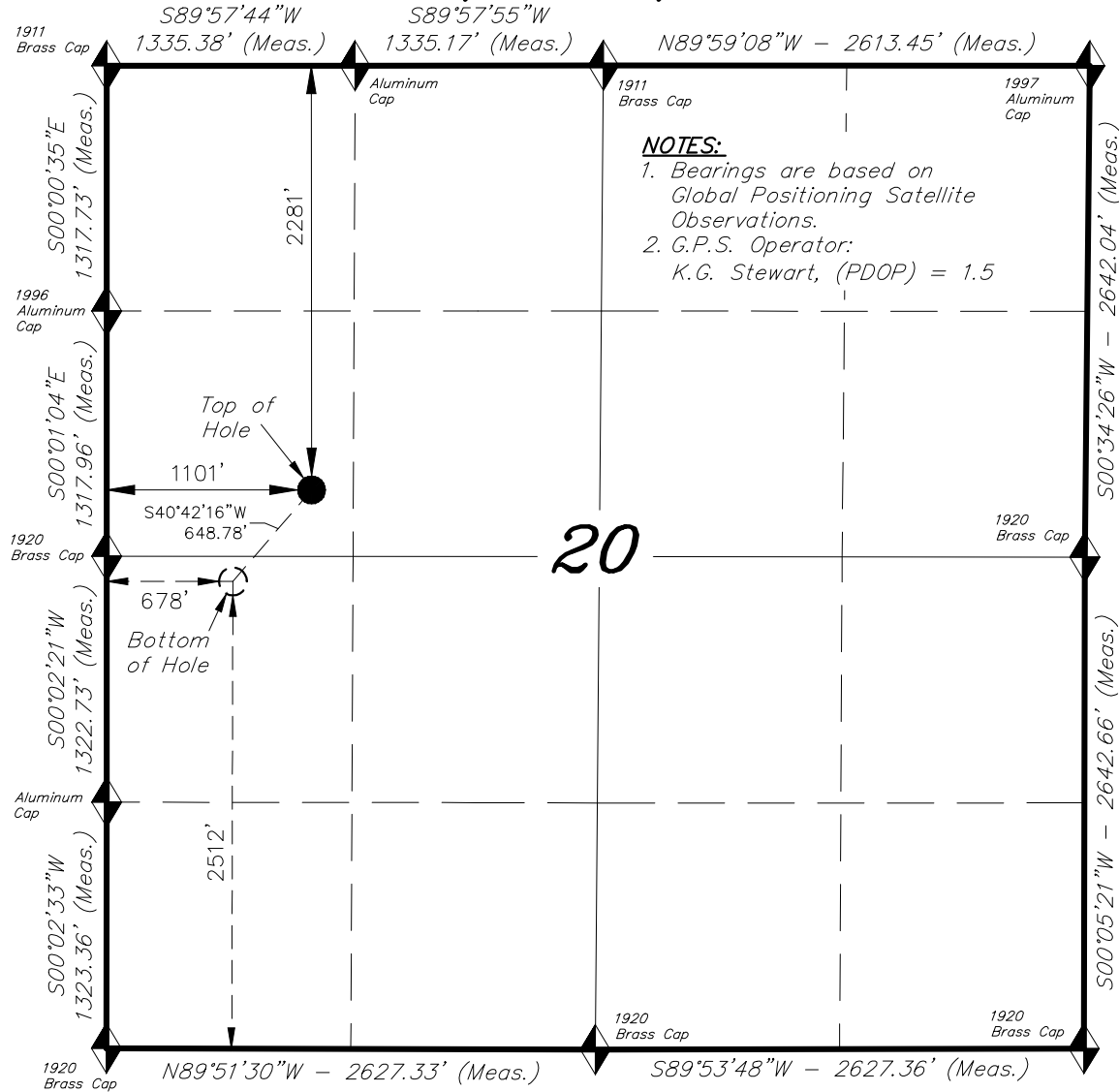


T7S, R94W, 6th P.M.

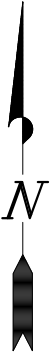
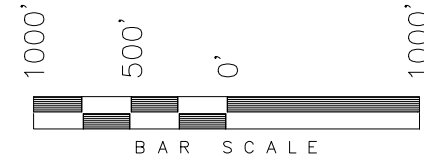
CAERUS OIL & GAS LLC



NOTES:
 1. Bearings are based on Global Positioning Satellite Observations.
 2. G.P.S. Operator: K.G. Stewart, (PDOP) = 1.5

WELL LOCATION, LONG 13A-20
 LOCATED AS SHOWN IN THE SW 1/4
 NW 1/4 OF SECTION 20, T7S, R94W,
 6th P.M. GARFIELD COUNTY, COLORADO.

TARGET BOTTOM HOLE, LONG 13A-20,
 LOCATED AS SHOWN IN THE NW 1/4
 SW 1/4 OF SECTION 20, T7S, R94W,
 6th P.M. GARFIELD COUNTY, COLORADO.



◆ = SECTION CORNERS LOCATED

**WELL LOCATION:
 LONG 13A-20**

ELEV. EXIST. GRADED GROUND = 7906'

THIS IS TO CERTIFY THAT THE ABOVE PLAT WAS PREPARED FROM FIELD NOTES OF REAL SURVEYS MADE BY ME OR UNDER MY SUPERVISION. THE LOCATION HAS BEEN STAKED ON THE GROUND AS SHOWN ON THE PLAT AND THAT THE SAME ARE TRUE AND CORRECT TO THE BEST OF MY KNOWLEDGE AND BELIEF.

10-12-15
 # 30125
 REGISTERED LAND SURVEYOR
 REGISTRATION NO. 30125
 STATE OF COLORADO
 TRI STATE LAND SURVEYING & CONSULTING

IMPROVEMENT NOTE:
 See addendum to legal plat
 (Sheet 2) for visible improvements
 within 500' of the proposed location.

BASIS OF ELEV;
 Elevations are based on
 an N.G.S. OPUS Correction.
 LOCATION: LAT. 40°46'03.41"
 LONG. 103°46'26.97"(Tristate Aluminum
 Cap) NAVD 88 Elev. 4750.22'

NAD 83 (SURFACE LOCATION)		NAD 83 (BOTTOM HOLE)	
LATITUDE = 39°25'31.66" (39.425460)	LONGITUDE = 107°54'55.98" (107.915550)	LATITUDE = 39°25'26.80" (39.424111)	LONGITUDE = 107°55'01.37" (107.917047)
UTM ZONE N12 FEET		UTM ZONE N12 FEET	
N: = 14332429.196 E: = 2511497.862	N: = 14331923.143 E: = 2511091.773		
NAD 27 (SURFACE LOCATION)		NAD 27 (BOTTOM HOLE)	
LATITUDE = 39°25'31.73" (39.425482)	LONGITUDE = 107°54'53.73" (107.914925)	LATITUDE = 39°25'26.87" (39.424132)	LONGITUDE = 107°54'59.12" (107.916423)
UTM ZONE N12 FEET		UTM ZONE N12 FEET	
N: = 14331758.042 E: = 2511696.581	N: = 14331252.000 E: = 2511290.500		

TRI STATE LAND SURVEYING & CONSULTING
 180 NORTH VERNAL AVE. - VERNAL, UTAH 84078
 (435) 781-2501

DATE SURVEYED: 07-15-15	SURVEYED BY: K.G.S.	SHEET 1d
DATE DRAWN: 08-21-15	DRAWN BY: F.T.M.	
REVISED: 10-12-15 F.T.M.	SCALE: 1" = 1000'	