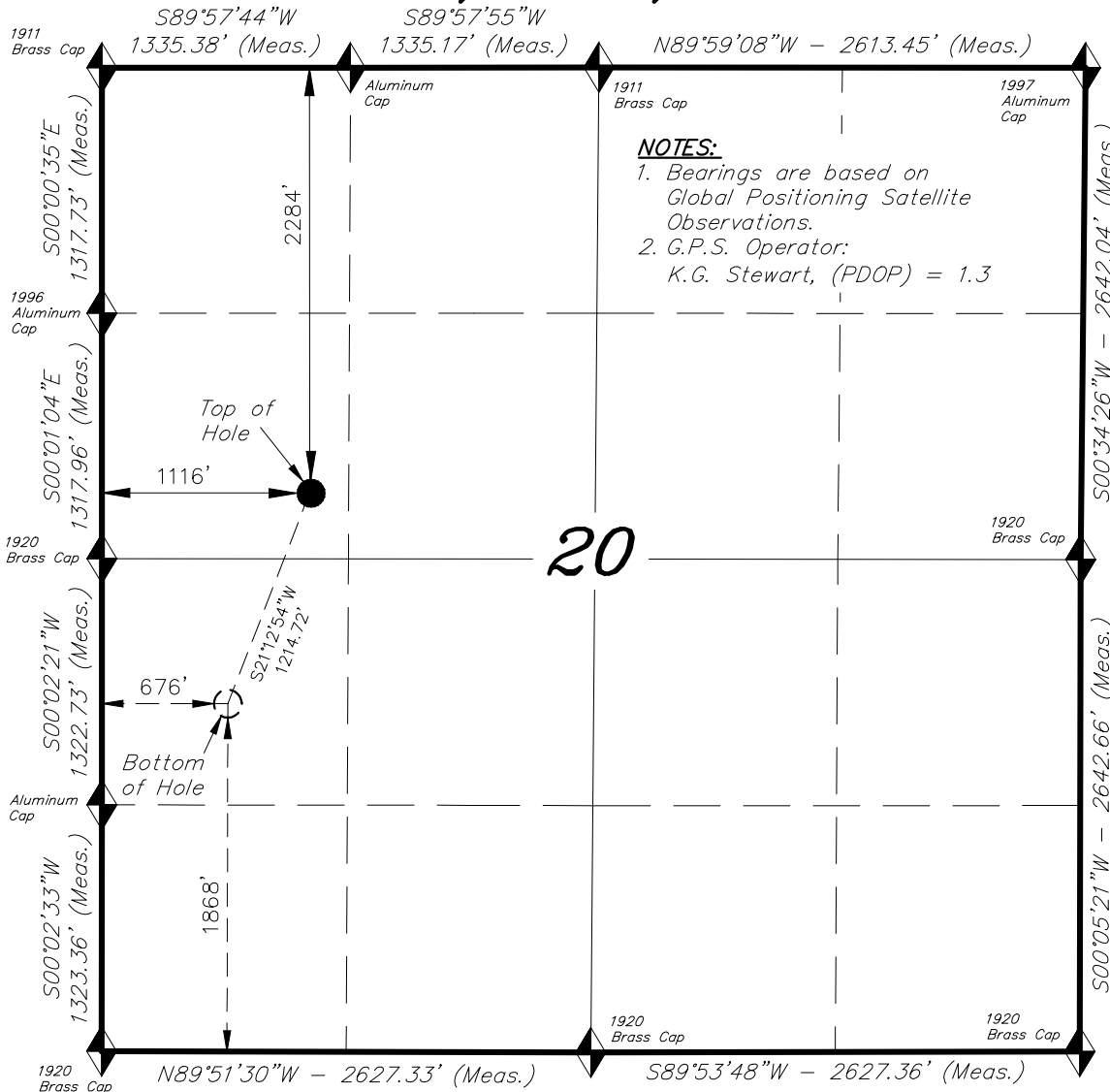


**T7S, R94W, 6th P.M.**

**CAERUS OIL & GAS LLC**

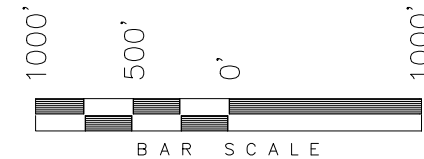


**NOTES:**

1. Bearings are based on Global Positioning Satellite Observations.
2. G.P.S. Operator: K.G. Stewart, (PDOP) = 1.3

WELL LOCATION, LONG 13C-20  
LOCATED AS SHOWN IN THE SW 1/4  
NW 1/4 OF SECTION 20, T7S, R94W,  
6th P.M. GARFIELD COUNTY, COLORADO.

TARGET BOTTOM HOLE, LONG 13C-20,  
LOCATED AS SHOWN IN THE NW 1/4  
SW 1/4 OF SECTION 20, T7S, R94W,  
6th P.M. GARFIELD COUNTY, COLORADO.



◆ = SECTION CORNERS LOCATED

**WELL LOCATION:  
LONG 13C-20**

ELEV. EXIST. GRADED GROUND = 7906'

THIS IS TO CERTIFY THAT THE ABOVE PLAT WAS  
PREPARED FROM FIELD NOTES OF REALITY SURVEYS  
MADE BY ME OR UNDER MY SUPERVISION. THE  
LOCATION HAS BEEN STAKED ON THE GROUND AS  
SHOWN ON THE PLAT AND THAT THE SAME ARE  
TRUE AND CORRECT TO THE BEST OF MY  
KNOWLEDGE AND BELIEF.

10-12-15  
# 30125  
REGISTERED LAND SURVEYOR  
REGISTRATION NO. 30125  
STATE OF COLORADO

**IMPROVEMENT NOTE:**

See addendum to legal plat  
(Sheet 2) for visible improvements  
within 500' of the proposed location.

**BASIS OF ELEV;**

Elevations are based on  
an N.G.S. OPUS Correction.  
LOCATION: LAT. 40°46'03.41"  
LONG. 103°46'26.97"(Tristate Aluminum  
Cap) NAVD 88 Elev. 4750.22'

NAD 83 (SURFACE LOCATION)		NAD 83 (BOTTOM HOLE)	
LATITUDE = 39°25'31.63" (39.425452)		LATITUDE = 39°25'20.44" (39.422344)	
LONGITUDE = 107°54'55.79" (107.915498)		LONGITUDE = 107°55'01.39" (107.917053)	
UTM ZONE N12 FEET		UTM ZONE N12 FEET	
N: = 14332426.500	E: = 2511512.620	N: = 14331279.632	E: = 2511111.973
NAD 27 (SURFACE LOCATION)		NAD 27 (BOTTOM HOLE)	
LATITUDE = 39°25'31.70" (39.425473)		LATITUDE = 39°25'20.51" (39.422365)	
LONGITUDE = 107°54'53.54" (107.914874)		LONGITUDE = 107°54'59.14" (107.916429)	
UTM ZONE N12 FEET		UTM ZONE N12 FEET	
N: = 14331755.346	E: = 2511711.339	N: = 14330608.500	E: = 2511310.700

**TRI STATE LAND SURVEYING & CONSULTING**

180 NORTH VERNAL AVE. - VERNAL, UTAH 84078  
(435) 781-2501

DATE SURVEYED: 07-15-15	SURVEYED BY: K.G.S.	SHEET  1b
DATE DRAWN: 08-21-15	DRAWN BY: F.T.M.	
REVISED: 10-12-15 F.T.M.	SCALE: 1" = 1000'	