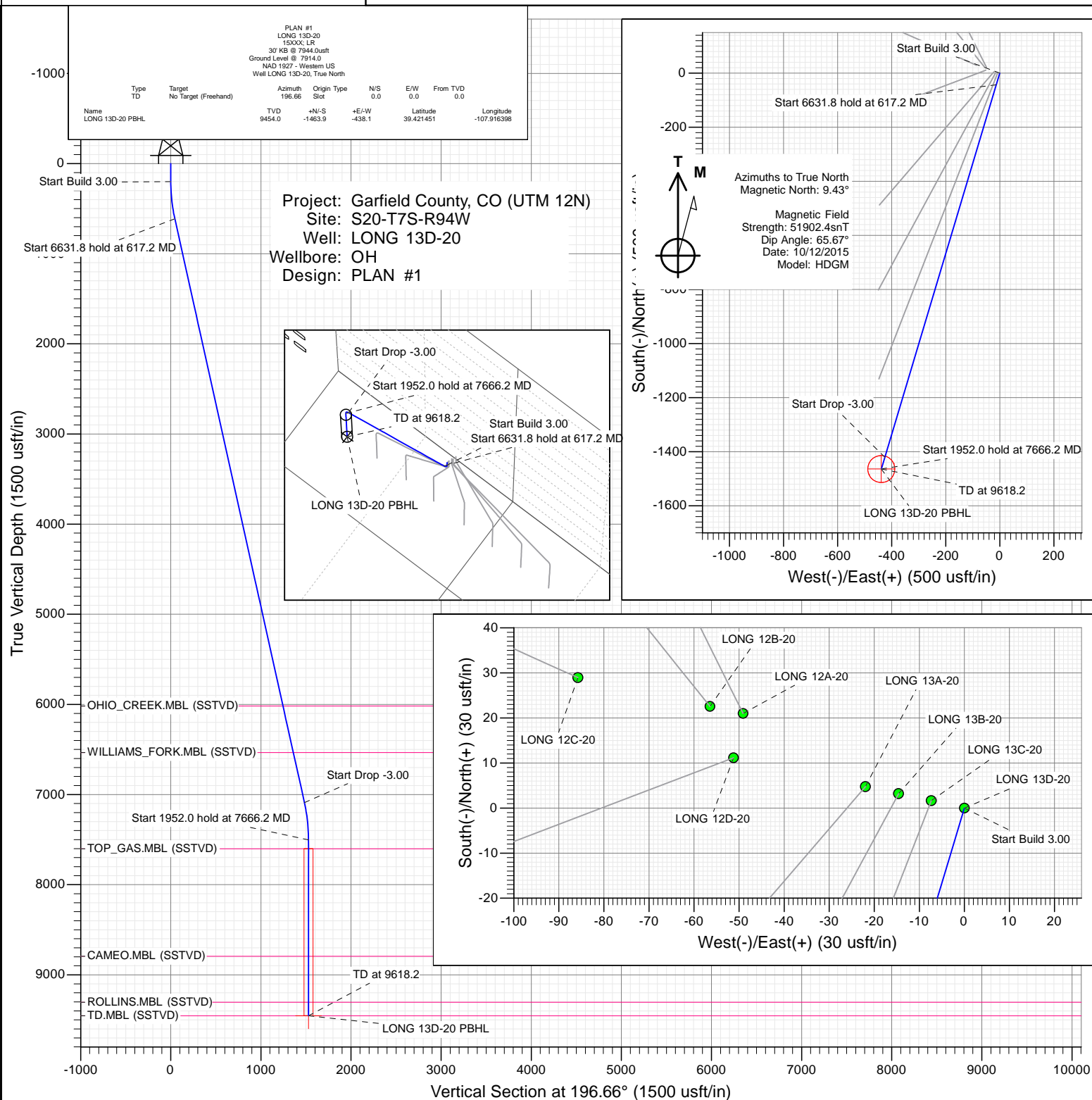




SECTION DETAILS

Sec	MD	Inc	Azi	TVD	+N/-S	+E/-W	Dleg	TFace	VSect	Target
1	0.0	0.00	0.00	0.0	0.0	0.0	0.00	0.00	0.0	
2	200.0	0.00	0.00	200.0	0.0	0.0	0.00	0.00	0.0	
3	617.2	12.52	196.66	613.9	-43.5	-13.0	3.00	196.66	45.4	
4	7249.0	12.52	196.66	7088.1	-1420.4	-425.1	0.00	0.00	1482.6	
5	7666.2	0.00	0.00	7502.0	-1463.9	-438.1	3.00	180.00	1528.0	
6	9618.2	0.00	0.00	9454.0	-1463.9	-438.1	0.00	0.00	1528.0	LONG 13D-20 PBHL



WELL DETAILS: LONG 13D-20

Ground Level:	7914.0
+N/-S	0.0
+E/-W	0.0
Northing	14331754.00
Easting	2511718.70
Latitude	39.425468
Longitude	-107.914848



Planning Report

Database:	USA EDM 5000 Multi Users DB	Local Co-ordinate Reference:	Well LONG 13D-20
Company:	Caerus Oil & Gas	TVD Reference:	30' KB @ 7944.0usft
Project:	Garfield County, CO (UTM 12N)	MD Reference:	30' KB @ 7944.0usft
Site:	S20-T7S-R94W	North Reference:	True
Well:	LONG 13D-20	Survey Calculation Method:	Minimum Curvature
Wellbore:	OH		
Design:	PLAN #1		

Project	Garfield County, CO (UTM 12N)		
Map System:	Universal Transverse Mercator (US Survey Feet)	System Datum:	Mean Sea Level
Geo Datum:	NAD 1927 - Western US		
Map Zone:	Zone 12N (114 W to 108 W)		

Site		S20-T7S-R94W			
Site Position:		Northing:	14,331,773.30 usft	Latitude:	39.425526
From:	Map	Easting:	2,511,668.90 usft	Longitude:	-107.915021
Position Uncertainty:	0.0 usft	Slot Radius:	13-3/16 "	Grid Convergence:	1.96 °

Well	LONG 13D-20					
Well Position	+N/-S	0.0 usft	Northing:	14,331,754.00 usft	Latitude:	39.425468
	+E/-W	0.0 usft	Easting:	2,511,718.70 usft	Longitude:	-107.914848
Position Uncertainty		0.0 usft	Wellhead Elevation:	0.0 usft	Ground Level:	7,914.0 usft

Wellbore	OH				
Magnetics	Model Name	Sample Date	Declination	Dip Angle	Field Strength
			(°)	(°)	(nT)
	HDGM	10/12/2015	9.43	65.67	51,902

Design	PLAN #1			
Audit Notes:				
Version:	Phase:	PLAN	Tie On Depth:	0.0
Vertical Section:	Depth From (TVD)	+N/-S	+E/-W	Direction
	(usft)	(usft)	(usft)	(°)
	0.0	0.0	0.0	196.66

Plan Sections										
Measured Depth (usft)	Inclination (°)	Azimuth (°)	Vertical Depth (usft)	+N/-S (usft)	+E/-W (usft)	Dogleg Rate (°/100usft)	Build Rate (°/100usft)	Turn Rate (°/100usft)	TFO (°)	Target
0.0	0.00	0.00	0.0	0.0	0.0	0.00	0.00	0.00	0.00	
200.0	0.00	0.00	200.0	0.0	0.0	0.00	0.00	0.00	0.00	
617.2	12.52	196.66	613.9	-43.5	-13.0	3.00	3.00	0.00	196.66	
7,249.0	12.52	196.66	7,088.1	-1,420.4	-425.1	0.00	0.00	0.00	0.00	
7,666.2	0.00	0.00	7,502.0	-1,463.9	-438.1	3.00	-3.00	0.00	180.00	
9,618.2	0.00	0.00	9,454.0	-1,463.9	-438.1	0.00	0.00	0.00	0.00	LONG 13D-20 PBHL

Planning Report

Database:	USA EDM 5000 Multi Users DB	Local Co-ordinate Reference:	Well LONG 13D-20
Company:	Caerus Oil & Gas	TVD Reference:	30' KB @ 7944.0usft
Project:	Garfield County, CO (UTM 12N)	MD Reference:	30' KB @ 7944.0usft
Site:	S20-T7S-R94W	North Reference:	True
Well:	LONG 13D-20	Survey Calculation Method:	Minimum Curvature
Wellbore:	OH		
Design:	PLAN #1		

Planned Survey									
Measured Depth (usft)	Inclination (°)	Azimuth (°)	Vertical Depth (usft)	+N/-S (usft)	+E/-W (usft)	Vertical Section (usft)	Dogleg Rate (°/100usft)	Build Rate (°/100u)	Comments / Formations
0.0	0.00	0.00	0.0	0.0	0.0	0.0	0.00	0.00	
100.0	0.00	0.00	100.0	0.0	0.0	0.0	0.00	0.00	
200.0	0.00	0.00	200.0	0.0	0.0	0.0	0.00	0.00	Start Build 3.00
300.0	3.00	196.66	300.0	-2.5	-0.8	2.6	3.00	3.00	
400.0	6.00	196.66	399.6	-10.0	-3.0	10.5	3.00	3.00	
500.0	9.00	196.66	498.8	-22.5	-6.7	23.5	3.00	3.00	
600.0	12.00	196.66	597.1	-40.0	-12.0	41.7	3.00	3.00	
617.2	12.52	196.66	613.9	-43.5	-13.0	45.4	3.00	3.00	Start 6631.8 hold at 617.2 MD
700.0	12.52	196.66	694.7	-60.7	-18.2	63.3	0.00	0.00	
800.0	12.52	196.66	792.3	-81.4	-24.4	85.0	0.00	0.00	
900.0	12.52	196.66	890.0	-102.2	-30.6	106.7	0.00	0.00	
1,000.0	12.52	196.66	987.6	-123.0	-36.8	128.3	0.00	0.00	
1,100.0	12.52	196.66	1,085.2	-143.7	-43.0	150.0	0.00	0.00	
1,200.0	12.52	196.66	1,182.8	-164.5	-49.2	171.7	0.00	0.00	
1,300.0	12.52	196.66	1,280.5	-185.2	-55.4	193.4	0.00	0.00	
1,400.0	12.52	196.66	1,378.1	-206.0	-61.7	215.0	0.00	0.00	
1,500.0	12.52	196.66	1,475.7	-226.8	-67.9	236.7	0.00	0.00	
1,600.0	12.52	196.66	1,573.3	-247.5	-74.1	258.4	0.00	0.00	
1,700.0	12.52	196.66	1,671.0	-268.3	-80.3	280.1	0.00	0.00	
1,800.0	12.52	196.66	1,768.6	-289.1	-86.5	301.7	0.00	0.00	
1,900.0	12.52	196.66	1,866.2	-309.8	-92.7	323.4	0.00	0.00	
2,000.0	12.52	196.66	1,963.8	-330.6	-98.9	345.1	0.00	0.00	
2,100.0	12.52	196.66	2,061.4	-351.3	-105.2	366.7	0.00	0.00	
2,200.0	12.52	196.66	2,159.1	-372.1	-111.4	388.4	0.00	0.00	
2,300.0	12.52	196.66	2,256.7	-392.9	-117.6	410.1	0.00	0.00	
2,400.0	12.52	196.66	2,354.3	-413.6	-123.8	431.8	0.00	0.00	
2,500.0	12.52	196.66	2,451.9	-434.4	-130.0	453.4	0.00	0.00	
2,600.0	12.52	196.66	2,549.6	-455.2	-136.2	475.1	0.00	0.00	
2,700.0	12.52	196.66	2,647.2	-475.9	-142.4	496.8	0.00	0.00	
2,800.0	12.52	196.66	2,744.8	-496.7	-148.7	518.4	0.00	0.00	
2,900.0	12.52	196.66	2,842.4	-517.4	-154.9	540.1	0.00	0.00	
3,000.0	12.52	196.66	2,940.1	-538.2	-161.1	561.8	0.00	0.00	
3,100.0	12.52	196.66	3,037.7	-559.0	-167.3	583.5	0.00	0.00	
3,200.0	12.52	196.66	3,135.3	-579.7	-173.5	605.1	0.00	0.00	
3,300.0	12.52	196.66	3,232.9	-600.5	-179.7	626.8	0.00	0.00	
3,400.0	12.52	196.66	3,330.6	-621.2	-185.9	648.5	0.00	0.00	
3,500.0	12.52	196.66	3,428.2	-642.0	-192.2	670.1	0.00	0.00	
3,600.0	12.52	196.66	3,525.8	-662.8	-198.4	691.8	0.00	0.00	
3,700.0	12.52	196.66	3,623.4	-683.5	-204.6	713.5	0.00	0.00	
3,800.0	12.52	196.66	3,721.0	-704.3	-210.8	735.2	0.00	0.00	
3,900.0	12.52	196.66	3,818.7	-725.1	-217.0	756.8	0.00	0.00	
4,000.0	12.52	196.66	3,916.3	-745.8	-223.2	778.5	0.00	0.00	
4,100.0	12.52	196.66	4,013.9	-766.6	-229.4	800.2	0.00	0.00	
4,200.0	12.52	196.66	4,111.5	-787.3	-235.7	821.9	0.00	0.00	
4,300.0	12.52	196.66	4,209.2	-808.1	-241.9	843.5	0.00	0.00	
4,400.0	12.52	196.66	4,306.8	-828.9	-248.1	865.2	0.00	0.00	
4,500.0	12.52	196.66	4,404.4	-849.6	-254.3	886.9	0.00	0.00	
4,600.0	12.52	196.66	4,502.0	-870.4	-260.5	908.5	0.00	0.00	
4,700.0	12.52	196.66	4,599.7	-891.2	-266.7	930.2	0.00	0.00	
4,800.0	12.52	196.66	4,697.3	-911.9	-272.9	951.9	0.00	0.00	
4,900.0	12.52	196.66	4,794.9	-932.7	-279.2	973.6	0.00	0.00	
5,000.0	12.52	196.66	4,892.5	-953.4	-285.4	995.2	0.00	0.00	

Planning Report

Database:	USA EDM 5000 Multi Users DB	Local Co-ordinate Reference:	Well LONG 13D-20
Company:	Caerus Oil & Gas	TVD Reference:	30' KB @ 7944.0usft
Project:	Garfield County, CO (UTM 12N)	MD Reference:	30' KB @ 7944.0usft
Site:	S20-T7S-R94W	North Reference:	True
Well:	LONG 13D-20	Survey Calculation Method:	Minimum Curvature
Wellbore:	OH		
Design:	PLAN #1		

Planned Survey									
Measured Depth (usft)	Inclination (°)	Azimuth (°)	Vertical Depth (usft)	+N/-S (usft)	+E/-W (usft)	Vertical Section (usft)	Dogleg Rate (°/100usft)	Build Rate (°/100u)	Comments / Formations
5,100.0	12.52	196.66	4,990.2	-974.2	-291.6	1,016.9	0.00	0.00	
5,200.0	12.52	196.66	5,087.8	-995.0	-297.8	1,038.6	0.00	0.00	
5,300.0	12.52	196.66	5,185.4	-1,015.7	-304.0	1,060.2	0.00	0.00	
5,400.0	12.52	196.66	5,283.0	-1,036.5	-310.2	1,081.9	0.00	0.00	
5,500.0	12.52	196.66	5,380.6	-1,057.3	-316.4	1,103.6	0.00	0.00	
5,600.0	12.52	196.66	5,478.3	-1,078.0	-322.7	1,125.3	0.00	0.00	
5,700.0	12.52	196.66	5,575.9	-1,098.8	-328.9	1,146.9	0.00	0.00	
5,800.0	12.52	196.66	5,673.5	-1,119.5	-335.1	1,168.6	0.00	0.00	
5,900.0	12.52	196.66	5,771.1	-1,140.3	-341.3	1,190.3	0.00	0.00	
6,000.0	12.52	196.66	5,868.8	-1,161.1	-347.5	1,212.0	0.00	0.00	
6,100.0	12.52	196.66	5,966.4	-1,181.8	-353.7	1,233.6	0.00	0.00	
6,151.8	12.52	196.66	6,017.0	-1,192.6	-356.9	1,244.9	0.00	0.00	OHIO_CREEK.MBL (SSTVD)
6,200.0	12.52	196.66	6,064.0	-1,202.6	-359.9	1,255.3	0.00	0.00	
6,300.0	12.52	196.66	6,161.6	-1,223.3	-366.1	1,277.0	0.00	0.00	
6,400.0	12.52	196.66	6,259.3	-1,244.1	-372.4	1,298.6	0.00	0.00	
6,500.0	12.52	196.66	6,356.9	-1,264.9	-378.6	1,320.3	0.00	0.00	
6,600.0	12.52	196.66	6,454.5	-1,285.6	-384.8	1,342.0	0.00	0.00	
6,681.4	12.52	196.66	6,534.0	-1,302.5	-389.9	1,359.6	0.00	0.00	WILLIAMS_FORK.MBL (SSTVD)
6,700.0	12.52	196.66	6,552.1	-1,306.4	-391.0	1,363.7	0.00	0.00	
6,800.0	12.52	196.66	6,649.7	-1,327.2	-397.2	1,385.3	0.00	0.00	
6,900.0	12.52	196.66	6,747.4	-1,347.9	-403.4	1,407.0	0.00	0.00	
7,000.0	12.52	196.66	6,845.0	-1,368.7	-409.6	1,428.7	0.00	0.00	
7,100.0	12.52	196.66	6,942.6	-1,389.4	-415.9	1,450.3	0.00	0.00	
7,200.0	12.52	196.66	7,040.2	-1,410.2	-422.1	1,472.0	0.00	0.00	
7,249.0	12.52	196.66	7,088.1	-1,420.4	-425.1	1,482.6	0.00	0.00	Start Drop -3.00
7,300.0	10.99	196.66	7,138.0	-1,430.3	-428.1	1,493.0	3.00	-3.00	
7,400.0	7.99	196.66	7,236.6	-1,446.1	-432.8	1,509.5	3.00	-3.00	
7,500.0	4.99	196.66	7,336.0	-1,456.9	-436.1	1,520.8	3.00	-3.00	
7,600.0	1.99	196.66	7,435.8	-1,462.8	-437.8	1,526.9	3.00	-3.00	
7,666.2	0.00	0.00	7,502.0	-1,463.9	-438.1	1,528.0	3.00	-3.00	Start 1952.0 hold at 7666.2 MD
7,700.0	0.00	0.00	7,535.8	-1,463.9	-438.1	1,528.0	0.00	0.00	
7,766.2	0.00	0.00	7,602.0	-1,463.9	-438.1	1,528.0	0.00	0.00	TOP_GAS.MBL (SSTVD)
7,800.0	0.00	0.00	7,635.8	-1,463.9	-438.1	1,528.0	0.00	0.00	
7,900.0	0.00	0.00	7,735.8	-1,463.9	-438.1	1,528.0	0.00	0.00	
8,000.0	0.00	0.00	7,835.8	-1,463.9	-438.1	1,528.0	0.00	0.00	
8,100.0	0.00	0.00	7,935.8	-1,463.9	-438.1	1,528.0	0.00	0.00	
8,200.0	0.00	0.00	8,035.8	-1,463.9	-438.1	1,528.0	0.00	0.00	
8,300.0	0.00	0.00	8,135.8	-1,463.9	-438.1	1,528.0	0.00	0.00	
8,400.0	0.00	0.00	8,235.8	-1,463.9	-438.1	1,528.0	0.00	0.00	
8,500.0	0.00	0.00	8,335.8	-1,463.9	-438.1	1,528.0	0.00	0.00	
8,600.0	0.00	0.00	8,435.8	-1,463.9	-438.1	1,528.0	0.00	0.00	
8,700.0	0.00	0.00	8,535.8	-1,463.9	-438.1	1,528.0	0.00	0.00	
8,800.0	0.00	0.00	8,635.8	-1,463.9	-438.1	1,528.0	0.00	0.00	
8,900.0	0.00	0.00	8,735.8	-1,463.9	-438.1	1,528.0	0.00	0.00	
8,958.2	0.00	0.00	8,794.0	-1,463.9	-438.1	1,528.0	0.00	0.00	CAMEO.MBL (SSTVD)
9,000.0	0.00	0.00	8,835.8	-1,463.9	-438.1	1,528.0	0.00	0.00	
9,100.0	0.00	0.00	8,935.8	-1,463.9	-438.1	1,528.0	0.00	0.00	
9,200.0	0.00	0.00	9,035.8	-1,463.9	-438.1	1,528.0	0.00	0.00	
9,300.0	0.00	0.00	9,135.8	-1,463.9	-438.1	1,528.0	0.00	0.00	
9,400.0	0.00	0.00	9,235.8	-1,463.9	-438.1	1,528.0	0.00	0.00	
9,468.2	0.00	0.00	9,304.0	-1,463.9	-438.1	1,528.0	0.00	0.00	ROLLINS.MBL (SSTVD)
9,500.0	0.00	0.00	9,335.8	-1,463.9	-438.1	1,528.0	0.00	0.00	

Planning Report

Database:	USA EDM 5000 Multi Users DB	Local Co-ordinate Reference:	Well LONG 13D-20
Company:	Caerus Oil & Gas	TVD Reference:	30' KB @ 7944.0usft
Project:	Garfield County, CO (UTM 12N)	MD Reference:	30' KB @ 7944.0usft
Site:	S20-T7S-R94W	North Reference:	True
Well:	LONG 13D-20	Survey Calculation Method:	Minimum Curvature
Wellbore:	OH		
Design:	PLAN #1		

Planned Survey

Measured Depth (usft)	Inclination (°)	Azimuth (°)	Vertical Depth (usft)	+N/-S (usft)	+E/-W (usft)	Vertical Section (usft)	Dogleg Rate (°/100usft)	Build Rate (°/100u)	Comments / Formations
9,600.0	0.00	0.00	9,435.8	-1,463.9	-438.1	1,528.0	0.00	0.00	
9,618.2	0.00	0.00	9,454.0	-1,463.9	-438.1	1,528.0	0.00	0.00	TD at 9618.2

Targets

Target Name	Dip Angle (°)	Dip Dir. (°)	TVD (usft)	+N/-S (usft)	+E/-W (usft)	Northing (usft)	Easting (usft)	Latitude	Longitude
- hit/miss target									
- Shape									
LONG 13D-20 PBHL	0.00	0.00	9,454.0	-1,463.9	-438.1	14,330,276.00	2,511,330.90	39.421451	-107.916398
- plan hits target center									
- Circle (radius 50.0)									

Formations

Measured Depth (usft)	Vertical Depth (usft)	Name	Lithology	Dip (°)	Dip Direction (°)
6,151.8	6,017.0	OHIO_CREEK.MBL (SSTVD)		0.00	
6,681.4	6,534.0	WILLIAMS_FORK.MBL (SSTVD)		0.00	
7,766.2	7,602.0	TOP_GAS.MBL (SSTVD)		0.00	
8,958.2	8,794.0	CAMEO.MBL (SSTVD)		0.00	
9,468.2	9,304.0	ROLLINS.MBL (SSTVD)		0.00	

Plan Annotations

Measured Depth (usft)	Vertical Depth (usft)	+N/-S (usft)	+E/-W (usft)	Comment
200.0	200.0	0.0	0.0	Start Build 3.00
617.2	613.9	-43.5	-13.0	Start 6631.8 hold at 617.2 MD
7,249.0	7,088.1	-1,420.4	-425.1	Start Drop -3.00
7,666.2	7,502.0	-1,463.9	-438.1	Start 1952.0 hold at 7666.2 MD
9,618.2	9,454.0	-1,463.9	-438.1	TD at 9618.2