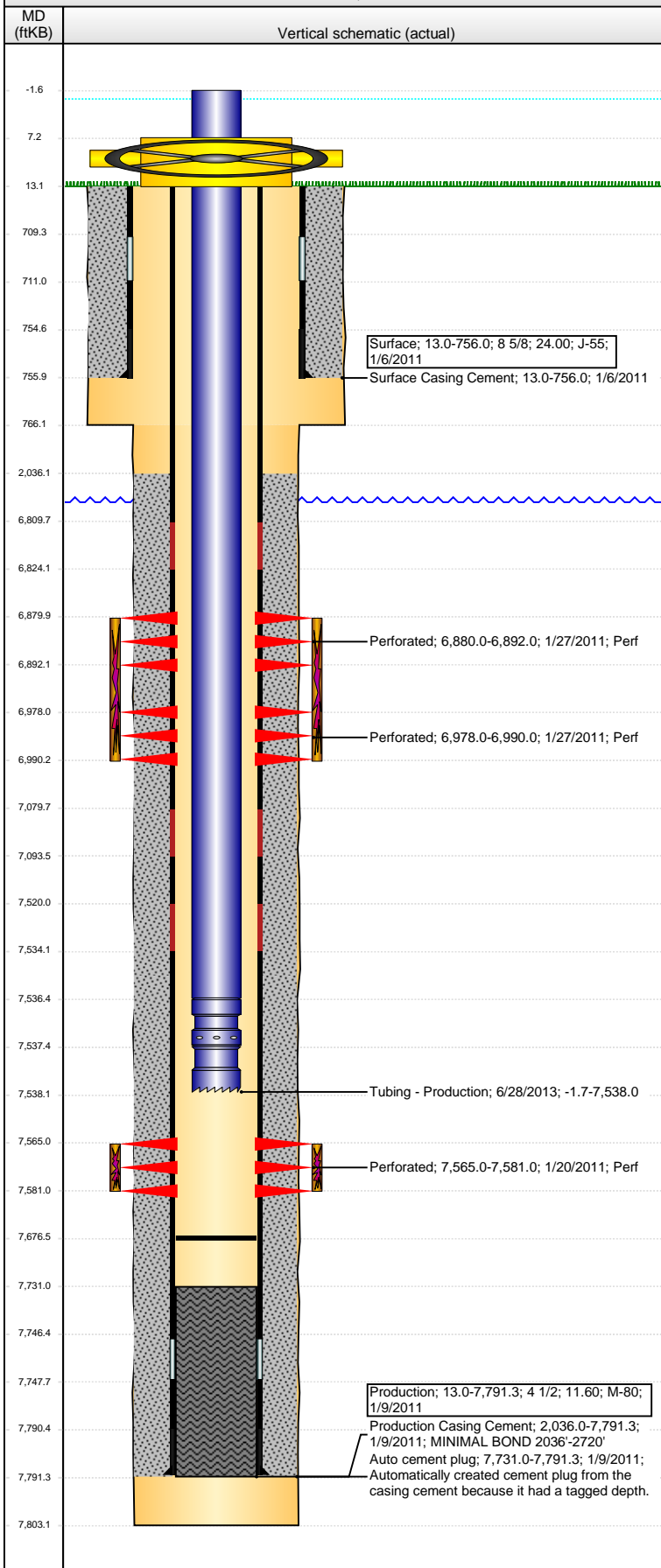


**Well Name: DECHANT X01-02**

VERTICAL - ORIGINAL HOLE, 10/26/2015 2:27:51 PM



## Well Header

API 05-123-31914	Business Unit DJ BASIN	District 15	Well Config VERTICAL
Original KB Elevation (ft) 4,841.00	KB - GL / MSL (ftKB) 13.00	Spud Date 1/5/2011	P & A Date

## Comment

3 7/8" CONE BIT & 1/2 OF PUMP OFF BIT SUB @ 7728.27' KB.

## Directions To Well

WCR 22 & 49, N 2, W .4, SOUTH INTO LOCATION

## Congressional Location

Quarter 1	Quarter 2	Quarter 3 NW	Quarter 4 NE	Section 1	Township 2 N	Twnshp N...	Range 65	Rng E/W Dir W
-----------	-----------	-----------------	-----------------	--------------	-----------------	-------------	-------------	------------------

## Bottom Hole Location

North-South Distance (ft)	From N or S Line	East-West Distance (ft)	From E or W Line
---------------------------	------------------	-------------------------	------------------

## Plug Back Total Depths

Date	Depth (ftKB)	Method	Com
1/9/2011	7,746.0	CASING TALLY	FLOAT COLLAR
1/20/2011	7,731.0	CASED HOLE LOG	DEPTH LOGGER ON CBL
2/18/2011	7,728.3	TBG TALLY	3 7/8" BIT & 1/2 OF PUMP OFF BIT SUB @ 7728' KB
4/3/2013	7,676.5	TAG	TAGGED W/ PRODUCTION TBG.

## Wellbore Sections

Section Des	Size (in)	Act Top, MD (ftKB)	Act Btm, MD (ftKB)
SURFACE	12 1/4	13.0	766.0
PRODUCTION	7 7/8	766.0	7,803.0

## Zone Statuses

Zone Name	Status Date	Status	Fluid Type	Job	Prod Method
NIOBRARA	1/31/2011	PR		DRILLING/CO...	
NIOBRARA	1/1/2015	PR		DRILLING/CO...	
J SAND	1/31/2011	PR		DRILLING/CO...	
J SAND	1/1/2014	PR		DRILLING/CO...	

## Casing Strings

### Surface, 756.0ftKB

Casing Description	Run Date	OD (in)	Wt/Len (l...)	Grade	Top, MD (ft...)	MD (ftKB)
Surface	1/6/2011	8 5/8	24.00	J-55	13.0	756.0

### Production, 7,791.3ftKB

Casing Description	Run Date	OD (in)	Wt/Len (l...)	Grade	Top, MD (ft...)	MD (ftKB)
Production	1/9/2011	4 1/2	11.60	M-80	13.0	7,791.3

## Cement

Description	Top Depth (ftKB)	Bottom Depth (ftKB)
Surface Casing Cement	13.0	756.0
Description	Top Depth (ftKB)	Bottom Depth (ftKB)
Production Casing Cement	2,036.0	7,791.3

## Tubing Strings

Tubing Description	Run Date	String...	ID (in)	Wt (lb/ft)	Grade	Len (ft)	Set De...
Tubing - Production	2/18/2011	2 3/8	1.995	4.60	J-55	7,540.00	7,545.6
Tubing Description	Run Date	String...	ID (in)	Wt (lb/ft)	Grade	Len (ft)	Set De...
Tubing - Production	4/3/2013	2 3/8	1.995	4.70	J-55	6,028.25	6,040.8
Tubing Description	Run Date	String...	ID (in)	Wt (lb/ft)	Grade	Len (ft)	Set De...
Tubing - Production	6/28/2013	2 3/8	1.995	4.70	J-55	7,539.70	7,537.2

## Tubing Components

Item Des	OD (in)	Wt (lb/ft)	Grade	Jts	Len (ft)	Btm (ftKB)	Btm (TVD) (ftKB)
EUE 8rd Tubing	2 3/8	4.70	J-55		7,538.00	7,536.3	
Pump Seating Nipple	2 3/8	1.10	X		1.10	7,537.4	7,536.6
Notched collar	2 3/8	2.00	X		0.60	7,538.0	7,537.2

## Perforation Data

Zone	Bnch/St g	Entered Shot Total	Top (ftKB)	Btm (ftKB)	Date
NIOBRARA, ORIGINAL HOLE	B	24	6,880.00	6,892.00	1/27/2011
NIOBRARA, ORIGINAL HOLE	C	24	6,978.00	6,990.00	1/27/2011
J SAND, ORIGINAL HOLE		64	7,565.00	7,581.00	1/20/2011

**Well Name: DECHANT X01-02**

VERTICAL - ORIGINAL HOLE, 10/26/2015 2:27:53 PM

## Stimulations & Treatments

Date 1/27/2011	Zone J SAND, ORIGINAL HOLE	Primary Job Type DRILLING/COMPLETION - ORIGINAL
-------------------	-------------------------------	--

Technical Result Success	Tech Result Details According to Plan	Tech Result Note
-----------------------------	--	------------------

Comment  
(J-SAND) AFTER GETTING TANK STRAPS BEFORE THE JOB WE WERE SHORT 850 BBLS SHORT AS PER JOB DESIGNS. WE HAD 6 LOADS OF WATER HAULED TO LOCATION. REVERSE RESULTS, PERFS OPEN=29, NWB=127, PERF FRICTION=140, WELLBORE=689, TOTAL=956. ISIP=1112, 5 MINUTE=753, 10 MINUTE=540, 15 MINUTE=359. OPERATIONALLY JOB WENT WELL WITH NO ISSUES TO REPORT. AVG VISC=20.2, PH=10.05, TEMP=67.2, PRESSURE=2025, RATE=35.4

Date 1/27/2011	Zone NIOBRARA, ORIGINAL HOLE	Primary Job Type DRILLING/COMPLETION - ORIGINAL
-------------------	---------------------------------	--

Technical Result Success	Tech Result Details According to Plan	Tech Result Note
-----------------------------	--	------------------

Comment  
(NIOBRARA B&C) HAD TO DROP A LITTLE RATE DUE TO FRAC PUMP OVER HEATING ON SLICKWATER PAD. BROUGHT FRAC PUMP OFFLINE DURING 2LB DUE TO CRUSH CAP LEAKING. AVG VISC=22.3, PH=10.04, TEMP=66.1, PRESSURE=4266, RATE=48.4.

## Other In Hole

Run Date	Des	OD (in)	Top (ftKB)	Btm (ftKB)

## Logs

Date	Type	Top, MD (ftKB)	Btm, MD (ftKB)
11/9/2010	Caliper/Comp. Density/Neutron/GR/SP/ML	2,650.0	7,781.0
11/9/2010	DIL/GR/SP/Caliper	756.0	7,801.0
1/20/2011	CBL/CCL/GR	7,565.0	7,581.0
1/8/2013	GYRO	13.0	7,500.0

