



October 2, 2015

BAYSWATER EXPLORATION AND PRODUCTION LLC - #10261
730 17TH ST STE 610
DENVER, CO 80202

RE: Rule 317.s. Statewide Fracture Stimulation Setback
TC Country Club West 1-9-11
SHL: 2454'FNL, 1195'FEL, SENE Sec. 8-T5N-R66W,
Top of Producing Zone Location: 680'FNL, 460'FWL, Sec. 9-T5N-R66W
BHL: 931'FNL, 2481'FWL, Sec. 11-T5N-R66W

Dear Operator,

Extraction Oil & Gas, LLC (Extraction) is applying to the Colorado Oil and Gas Conservation Commission (COGCC) to drill the above referenced well at the described surface and bottom hole locations. Per COGCC Rule 317.s., no horizontal wellbore lateral shall be located less than one hundred fifty (150) feet from any existing or permitted oil or gas wellbore unless waived in writing by the operator of the encroached upon well. As currently planned, the horizontal wellbore lateral of the above well will lie within 150 feet of the wellbore of the captioned well:

MCCLOSKEY #11-10, API # 05-123-22434, Operated by Bayswater, Closest distance: 58 feet

Per COGCC Rules, Extraction is required to get the offset well operator's approval in writing and a waiver of said Rule 317.s. The well is planned as above to maximize mineral recovery. Also enclosed is a Well Location Plat that shows the planned wellbore.

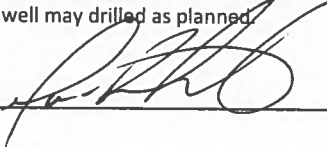
Should you find this acceptable please indicate so by signing the below section and returning the signed letter either via email to alyssa.andrews@iptenergyservices.com or by fax. Please contact the undersigned at 720-420-5700 with any questions.

Sincerely,

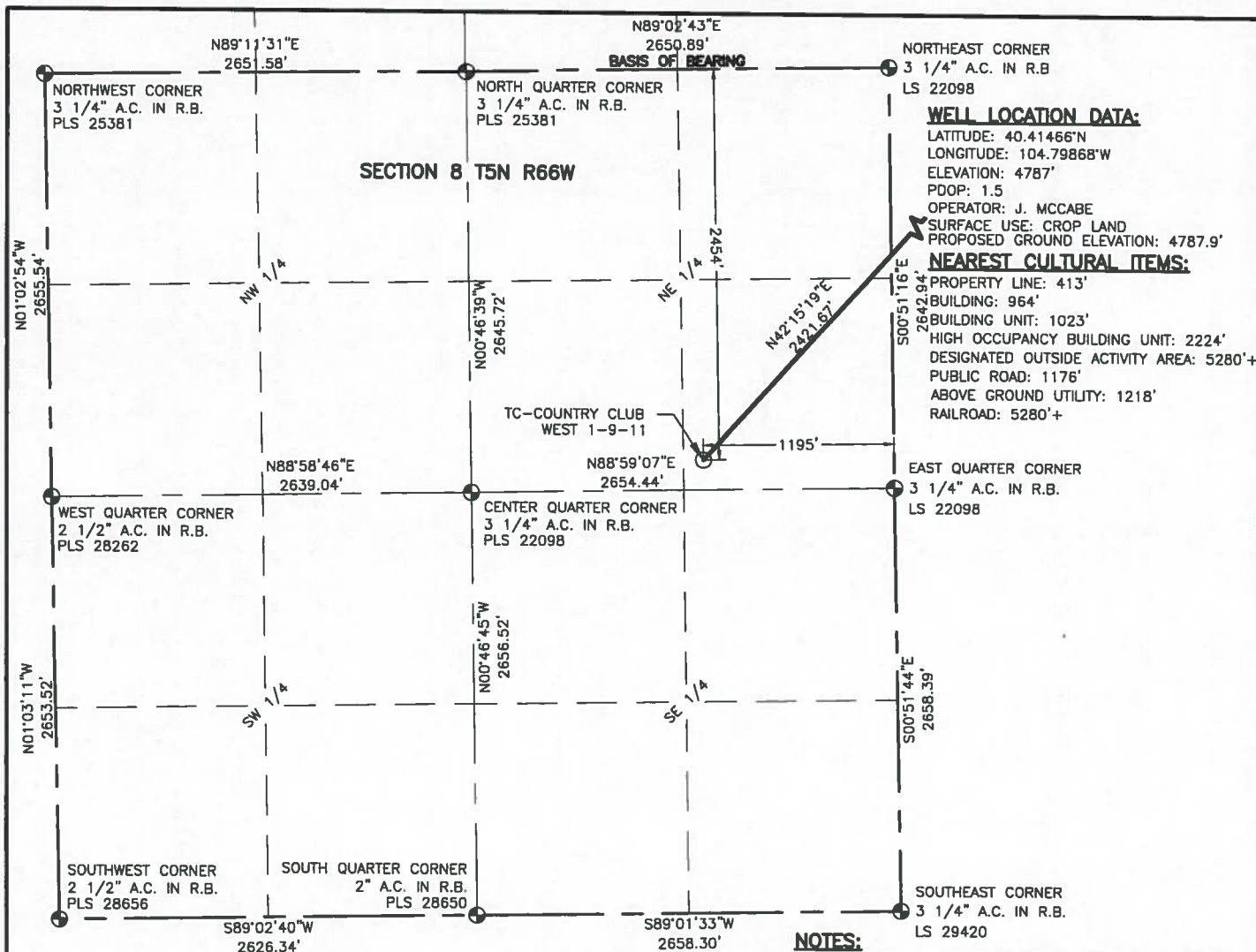
Alyssa Andrews
Operations Engineer
Integrated Petroleum Technologies
Consultant for Extraction Oil & Gas, LLC

I, Joe Richardson, officer, agent, or employee of Bayswater E + P
operator of the affected well, with full power to execute the following, do hereby approve of the **Extraction TC**
Country Club West 1-9-11 well as listed above in **Sec. 8-T5N-R66W** and grant a waiver COGCC Rule 317.s. granting
that this well may drilled as planned.

Signed



this 9th day of October, 2015



LAND SURVEYOR'S CERTIFICATION

LAMP, RYNEARSON & ASSOCIATES, INC., OF FT. COLLINS, COLORADO HAS, IN ACCORDANCE WITH A REQUEST FROM DUSTIN DYK AT EXTRACTION OIL & GAS, DETERMINED THE SURFACE LOCATION OF THE WELL DESIGNATED AS TC-COUNTRY CLUB WEST 1-9-11 TO BE 2454' FROM THE NORTH LINE AND 1195' FROM THE EAST LINE OF SECTION 8, TOWNSHIP 5 NORTH, RANGE 66 WEST OF THE 6TH P.M., WELD COUNTY, COLORADO.



FRANK A. KOHL
COLORADO PLS 37067

DATE OF SURVEY: 9/18/2013 AND 12/10/13 (SECTION CONTROL)

DATE OF SURVEY: 2/21/2014 (WELL LOCATION)



1000
0
SCALE: 1" = 1000'
U.S. SURVEY FEET

LEGEND

- ⊙ ALIQUOT CORNER A.C. ALUMINUM CAP
- ⊙ BOTTOM HOLE R.B. RANGE BOX
- ⊙ PROPOSED WELL

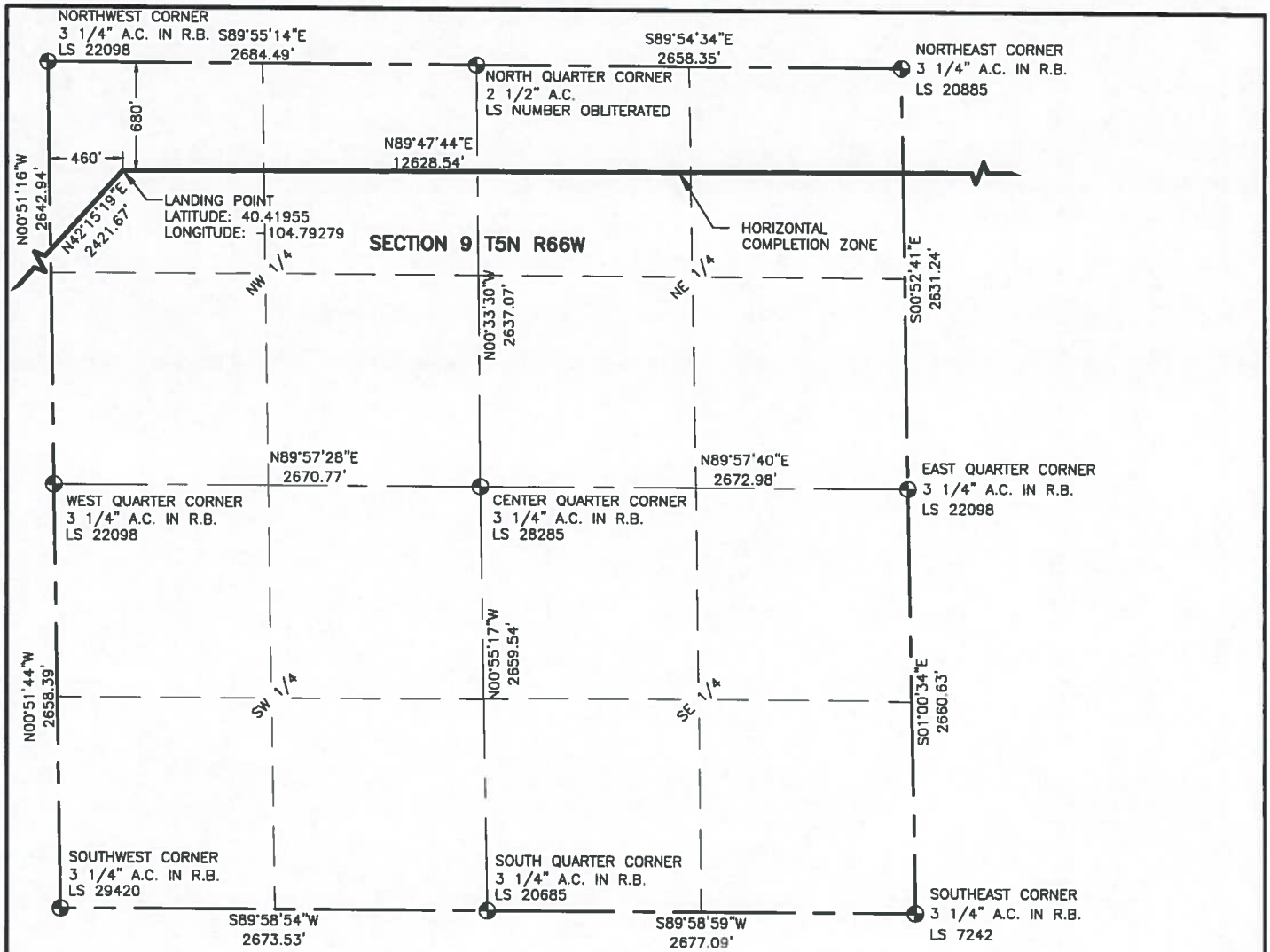


LAMP RYNEARSON
& ASSOCIATES

4715 Innovation Drive 970.226.0342 | P
Fort Collins, CO 80525 970.226.0879 | F
www.LRA-inc.com

Proposed Well Location Exhibit
TC-Country Club West 1-9-11
1 of 4

drawn by	date	cogcc id	project - task number	book and page	surface - location
KJW	07/02/15	436824	0213054.01		SE/4, NE/4, SEC 8 T5N R66W
path filename P:\Engineering\0213054.01\DRAWINGS\EXHIBITS\0213054-01EXWPH.dwg					



LEGEND

- ALIQUOT CORNER
- ⊙ BOTTOM HOLE
- PROPOSED WELL
- A.C. ALUMINUM CAP
- R.B. RANGE BOX



1000 0
 SCALE: 1" = 1000'
 U.S. SURVEY FEET

NOTES:

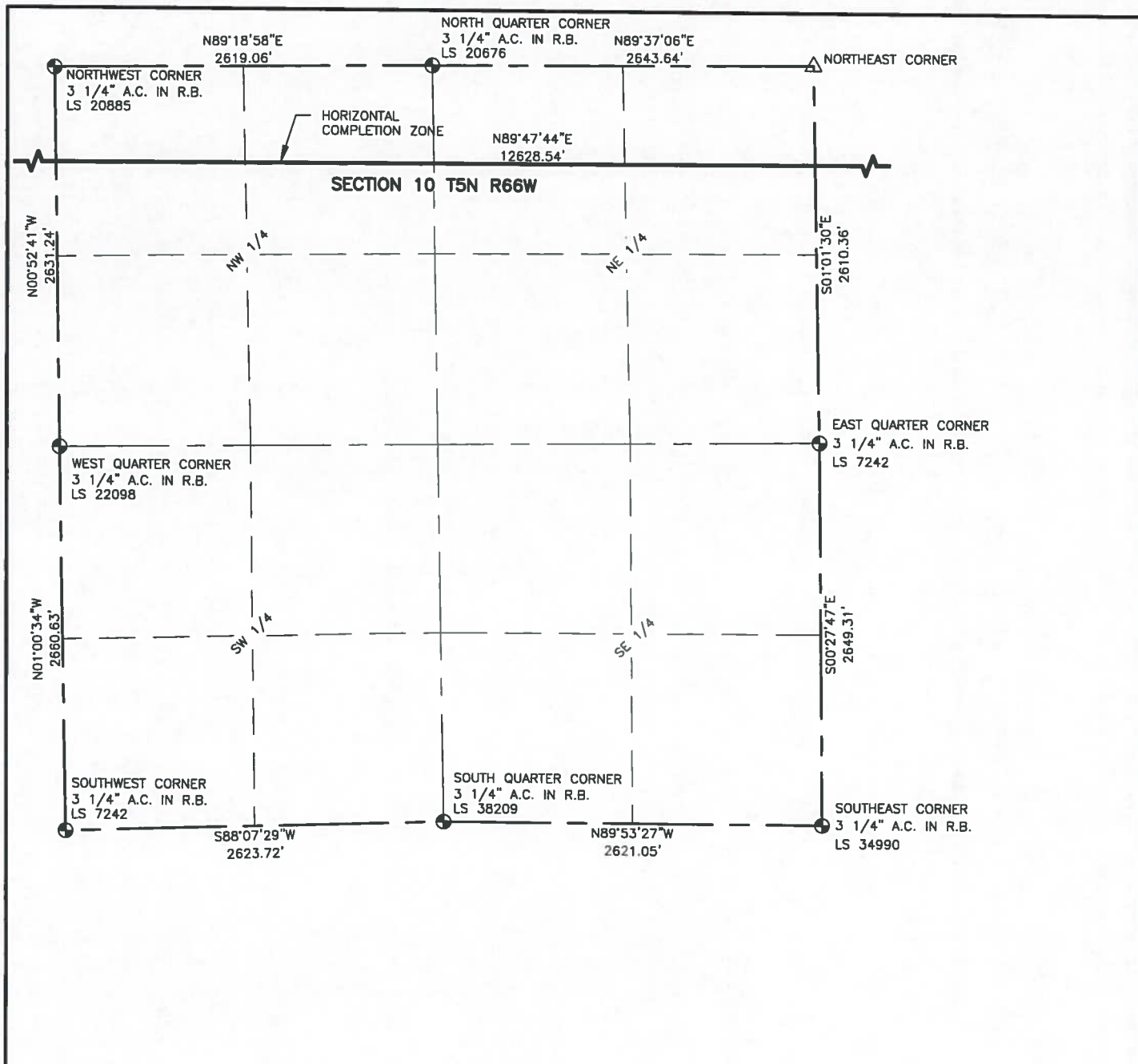
1. DISTANCES ARE MEASURED PERPENDICULAR TO NEAREST SECTION LINE AND ARE SHOWN ON THE SAME SIDE OF THE SECTION LINE WHERE THE WELL IS LOCATED.
2. THIS MAP DOES NOT REPRESENT A MONUMENTED BOUNDARY SURVEY. SIXTEENTH CORNER LOCATIONS ARE COMPUTED, UNLESS OTHERWISE NOTED.
3. BOTTOM HOLE LOCATIONS AND HORIZONTAL COMPLETION ZONE PROVIDED BY OTHERS.



4715 Innovation Drive 970.226.0342 | P
 Fort Collins, CO 80525 970.226.0879 | F
 www.LRA-Inc.com

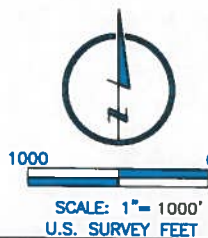
Proposed Well Location Exhibit
 TC-Country Club West 1-9-11
 2 of 4

drawn by	date	cogcc id	project - task number	book and page	surface - location
KJW	07/02/15	436824	0213054.01		SE/4, NE/4, SEC 8 T5N R66W
path\filename P:\Engineering\0213054.01\DRAWINGS\EXHIBITS\0213054-01EXWPHB.dwg					



LEGEND

- ALIQUOT CORNER
- ⊙ BOTTOM HOLE
- △ COMPUTED ALIQUOT CORNER FROM MONUMENT ACCESSORIES
- PROPOSED WELL
- A.C. ALUMINUM CAP
- R.B. RANGE BOX



NOTES:

- DISTANCES ARE MEASURED PERPENDICULAR TO NEAREST SECTION LINE AND ARE SHOWN ON THE SAME SIDE OF THE SECTION LINE WHERE THE WELL IS LOCATED.
- THIS MAP DOES NOT REPRESENT A MONUMENTED BOUNDARY SURVEY. SIXTEENTH CORNER LOCATIONS ARE COMPUTED, UNLESS OTHERWISE NOTED.
- BOTTOM HOLE LOCATIONS AND HORIZONTAL COMPLETION ZONE PROVIDED BY OTHERS.



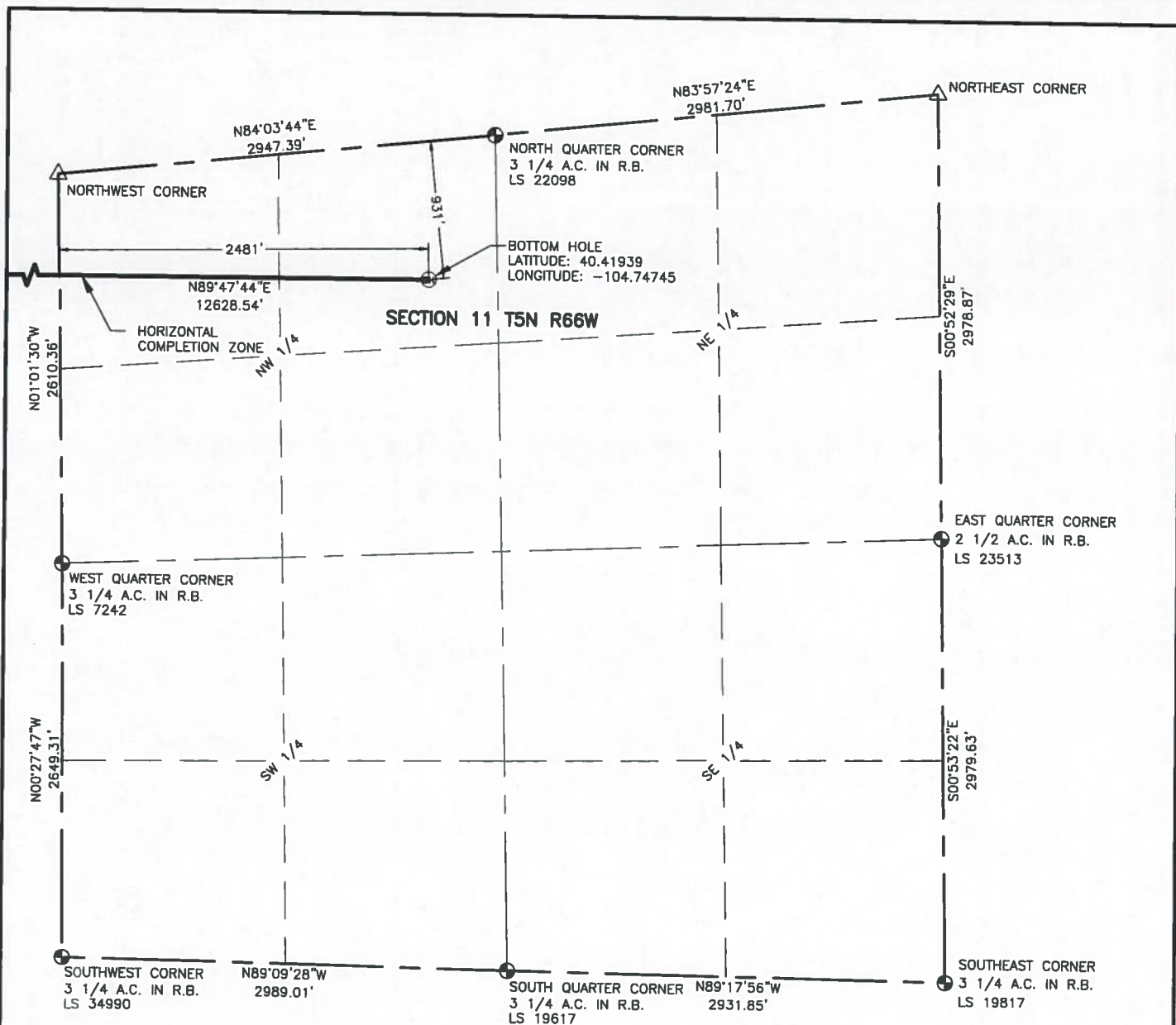
LAMP RYNEARSON & ASSOCIATES

4715 Innovation Drive 970.226.0342 | P
Fort Collins, CO 80525 970.226.0879 | F
www.LRA-Inc.com

Proposed Well Location Exhibit
TC-Country Club West 1-9-11
3 of 4

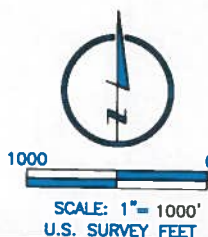
drawn by	date	cogcc id	project - task number	book and page
KJW	07/02/15	436824	0213054.01	
path\filename P:\Engineering\0213054.01\DRAWINGS\EXHIBITS\0213054-01EXWPHC.dwg				

surface - location
SE/4, NE/4, SEC 8 T5N R66W



LEGEND

- ALIQUOT CORNER
- ⊙ BOTTOM HOLE
- △ COMPUTED ALIQUOT CORNER FROM MONUMENT ACCESSORIES
- PROPOSED WELL
- A.C. ALUMINUM CAP
- R.B. RANGE BOX



NOTES:

1. DISTANCES ARE MEASURED PERPENDICULAR TO NEAREST SECTION LINE AND ARE SHOWN ON THE SAME SIDE OF THE SECTION LINE WHERE THE WELL IS LOCATED.
2. THIS MAP DOES NOT REPRESENT A MONUMENTED BOUNDARY SURVEY. SIXTEENTH CORNER LOCATIONS ARE COMPUTED, UNLESS OTHERWISE NOTED.
3. BOTTOM HOLE LOCATIONS AND HORIZONTAL COMPLETION ZONE PROVIDED BY OTHERS.



LAMP RYNEARSON
& ASSOCIATES

4715 Innovation Drive 970.226.0342 | P
Fort Collins, CO 80525 970.226.0879 | F
www.LRA-inc.com

Proposed Well Location Exhibit
TC-Country Club West 1-9-11
4 of 4

drawn by
KJW

date
07/02/15

cogcc id
436824

project - task number
0213054.01

book and page

surface - location
SE/4, NE/4, SEC 8 T5N R66W

path filename P:\Engineering\0213054.01\DRAWINGS\EXHIBITS\0213054-01EXWPHD.dwg