



Photo 1: Photo taken from South side of location looking North.

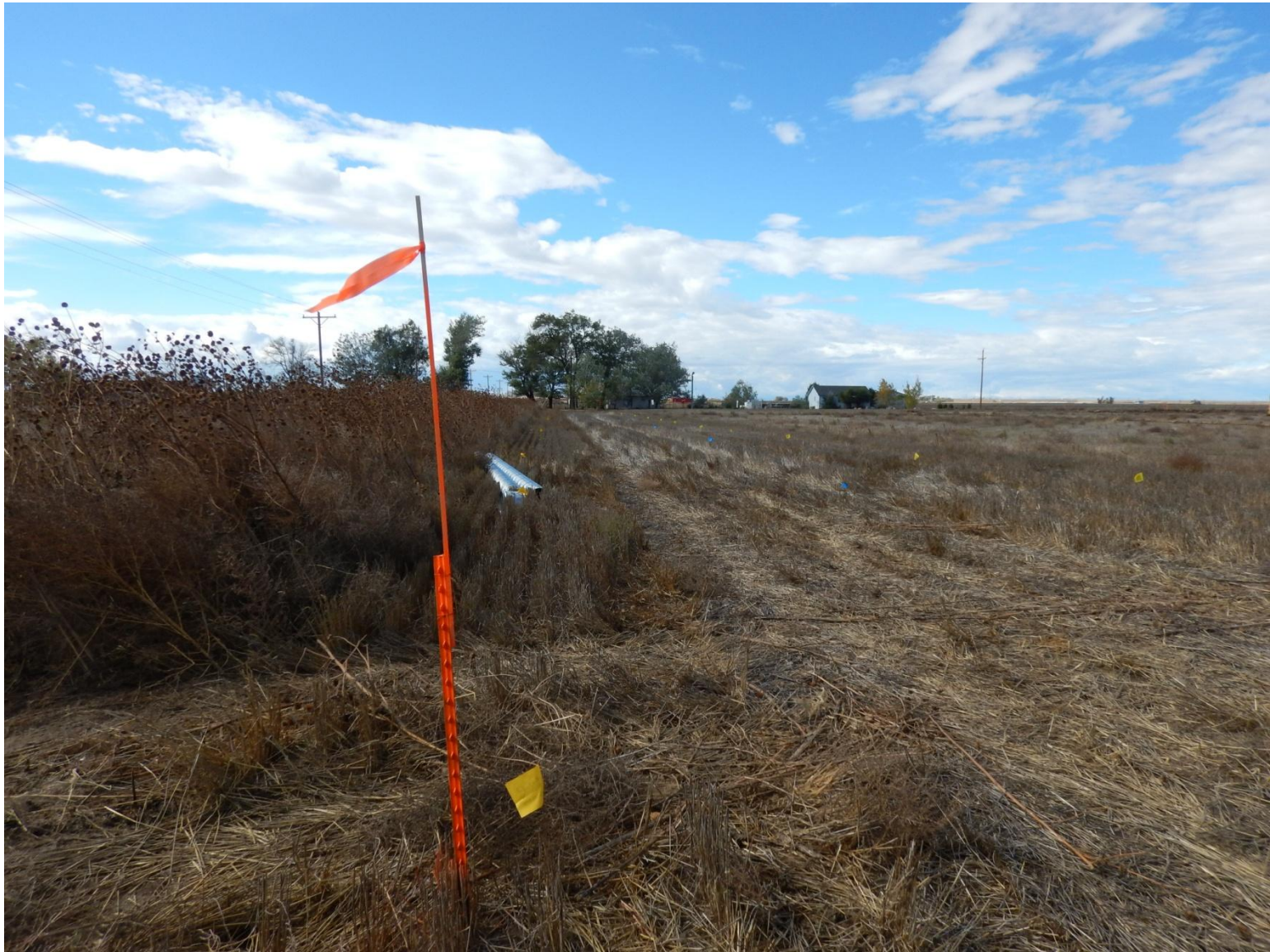


Photo 2: Photo taken from South side of location looking West.

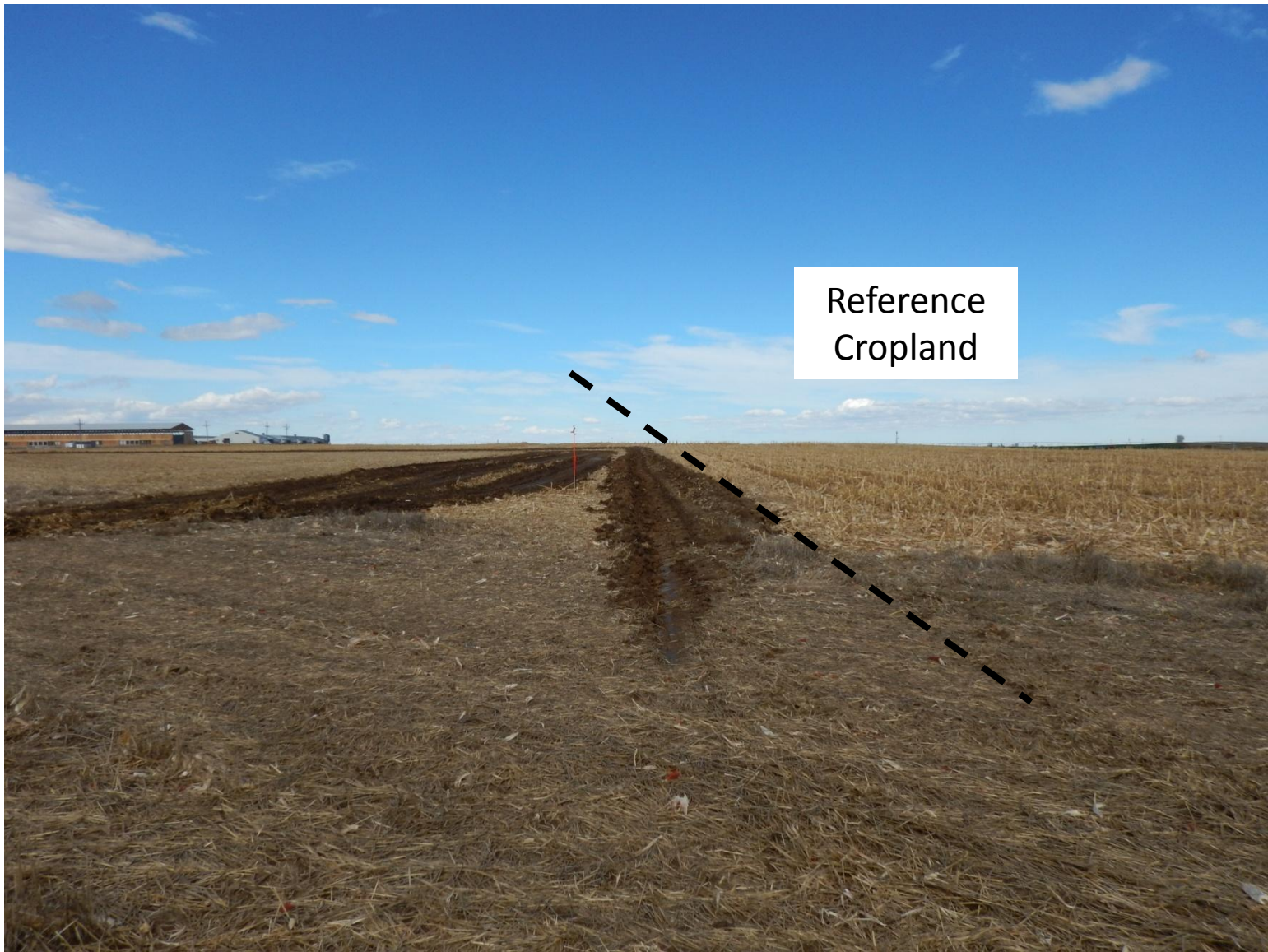


Photo 3: Photo taken from East side of location looking North. Stormwater control ditch center. Reference cropland on right of photo.



Photo 4: Photo taken from East side of location looking West. Stormwater control ditch center of photo.



Photo 5: Photo taken from Southwest side of location looking North.



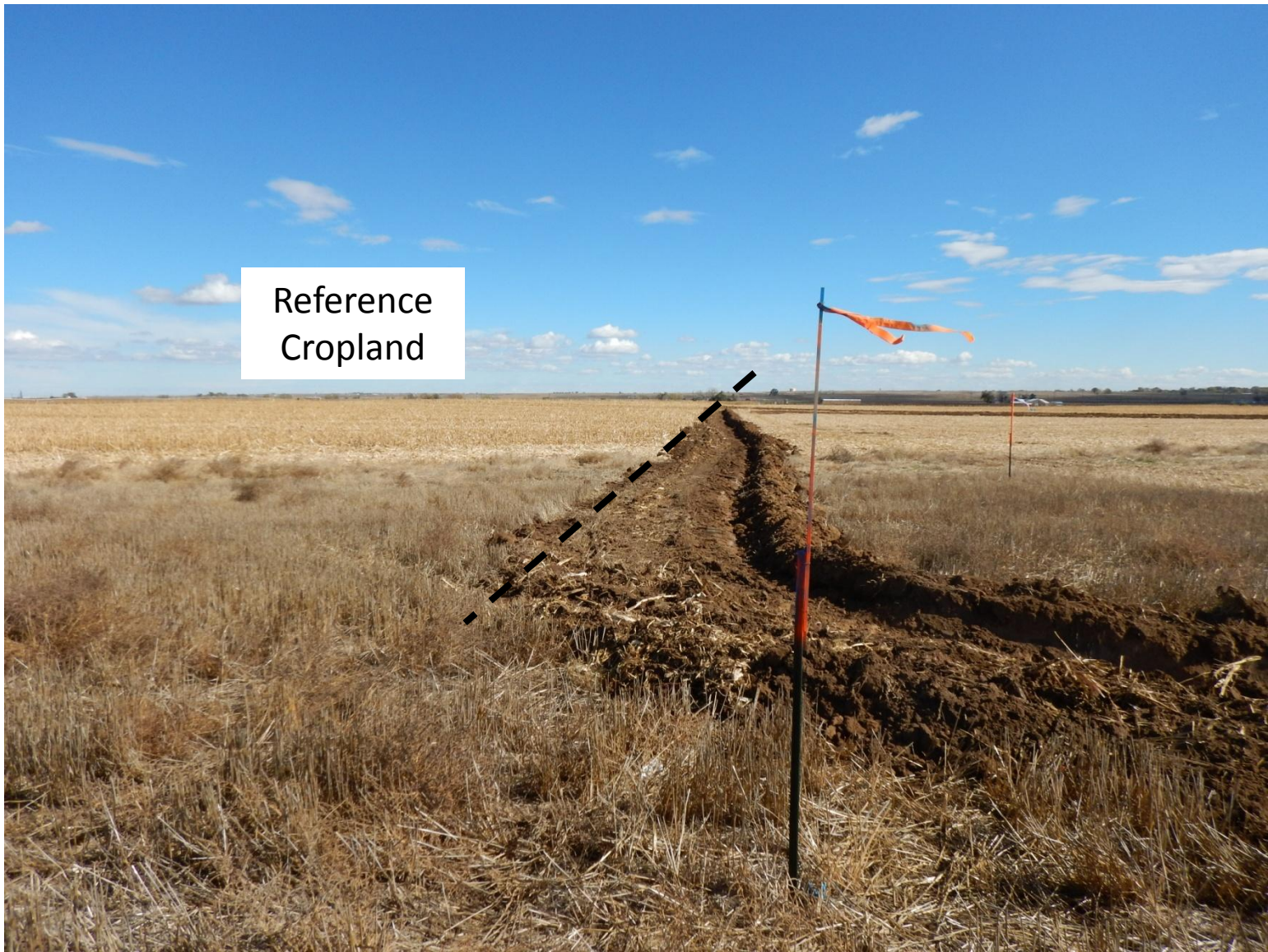
Photo 6: Photo taken from Southwest side of location looking East.



Photo 7: Photo taken from West side of location looking North. Note scrapers depositing topsoil. Stormwater control ditch center.



Photo 8: Photo taken from West side of location looking east.



Reference
Cropland

Photo 9: Photo taken from Northwest of location looking East. Stormwater control ditch center, reference cropland on left.



Photo 10: Photo taken from Northwest side of location looking South.



Photo 11: Photo taken from North side of location looking South. Topsoil removal in process.



Photo 12: Photo taken from Northeast side of location looking South. Stormwater control ditch center.



Photo 13: Photo taken from Northeast side of location looking West.
Stormwater control ditch center.



Photo 14: Photo taken from County Road 16 looking North to location. One of two sites vehicle/equipment have been using to access location.



Photo 15: Photo taken from County Road 16 looking East. One of two sites vehicle/equipment have been using to access location.



Photo 16: Photo taken from County Road 16 looking North at Eastern portion of location. Second of two sites vehicle/equipment have been using to access location.



Photo 17: Photo taken from County Road 16 looking Northeast. Second of two sites vehicle/equipment have been using to access location..