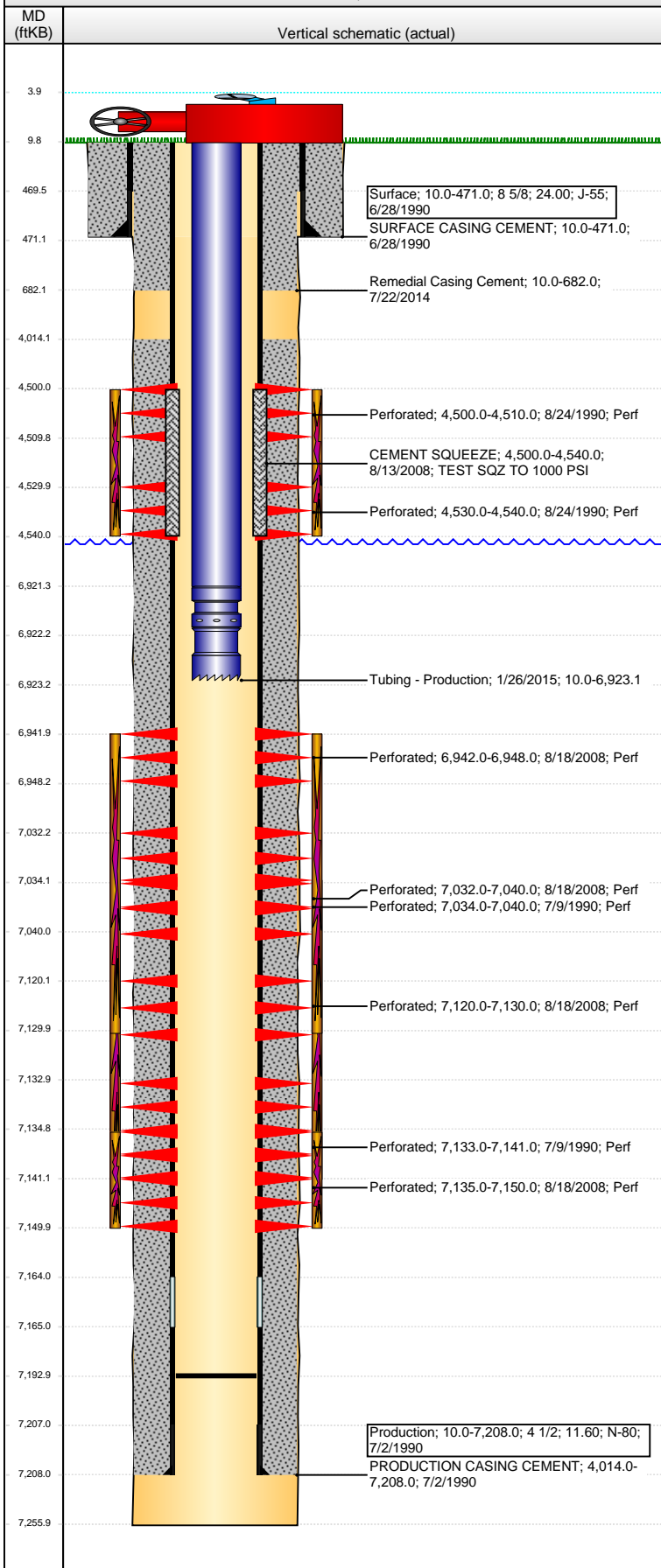


Wellbore Schematic Input Report

Well Name: FREEDOM TWO C 19-4

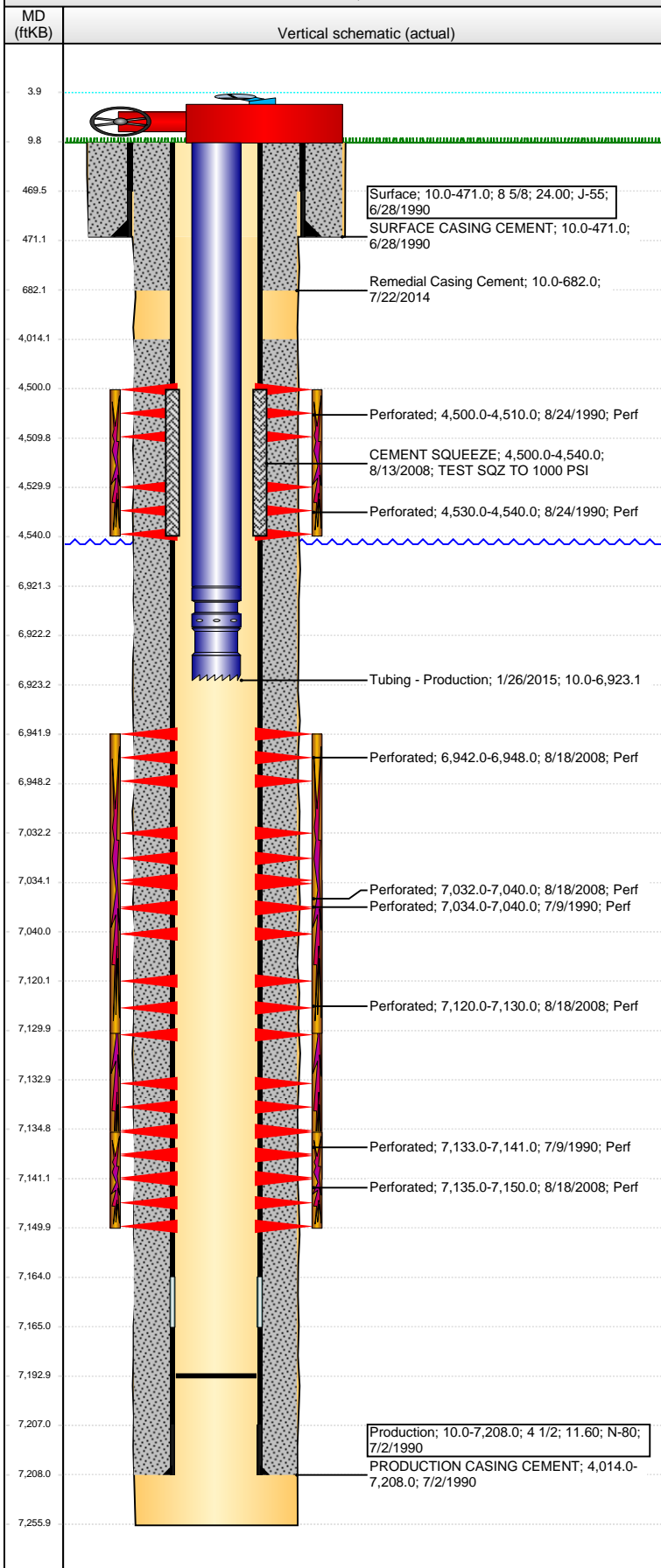
VERTICAL - ORIGINAL HOLE, 10/22/2015 9:51:57 AM



Well Header									
API 05-123-14624		Business Unit DJ BASIN		District 15		Well Config VERTICAL			
Original KB Elevation (ft) 4,860.00		KB - GL / MSL (ftKB) 10.00		Spud Date 6/28/1990		P & A Date			
Comment WELL DATA SKETCHY									
Directions To Well Wcr 44 & Wcr 49, EAST 1/10 SOUTH INTO									
Congressional Location									
Quarter 1	Quarter 2	Quarter 3	Quarter 4	Section	Township	Twnshp N...	Range	Rng E/W Dir	
		NW	NW	19	4	N	64	W	
Bottom Hole Location									
North-South Distance (ft)		From N or S Line		East-West Distance (ft)			From E or W Line		
Plug Back Total Depths									
Date	Depth (ftKB)	Method			Com				
7/2/1990	7,164.0	CASING TALLY			FLOAT COLLAR				
7/7/1990	7,176.0	TAG			DEPTH LOGGER ON CBL				
8/27/2008	7,164.0	TAG			C/O LND TBG				
7/18/2014	7,193.0	TUBING TALLY							
Wellbore Sections									
Section Des			Size (in)		Act Top, MD (ftKB)		Act Btm, MD (ftKB)		
SURFACE			12 1/4		10.0		471.0		
PRODUCTION			7 7/8		471.0		7,256.0		
Zone Statuses									
Zone Name	Status Date	Status	Fluid Type	Job	Prod Method				
NIOBRARA	7/19/1990	PR		DRILLING/CO...					
NIOBRARA	9/5/2008	PR		RE-FRAC, 8/13...					
CODELL	7/19/1990	PR		DRILLING/CO...					
CODELL	9/5/2008	PR		RE-FRAC, 8/13...					
SUSSEX	8/31/1990	PR		DRILLING/CO...					
SUSSEX	8/31/2008	AB		RE-FRAC, 8/13...					
NIOBRARA-C...	7/21/2014	SI		HORIZONTAL...					
Casing Strings									
Surface, 471.0ftKB									
Casing Description Surface		Run Date 6/28/1990	OD (in) 8 5/8	Wt/Len (l... 24.00	Grade J-55	Top, MD (ft... 10.0	MD (ftKB) 471.0		
Production, 7,208.0ftKB									
Casing Description Production		Run Date 7/2/1990	OD (in) 4 1/2	Wt/Len (l... 11.60	Grade N-80	Top, MD (ft... 10.0	MD (ftKB) 7,208.0		
Cement									
Description SURFACE CASING CEMENT				Top Depth (ftKB) 10.0		Bottom Depth (ftKB) 471.0			
Description PRODUCTION CASING CEMENT				Top Depth (ftKB) 4,014.0		Bottom Depth (ftKB) 7,208.0			
Description CEMENT SQUEEZE				Top Depth (ftKB) 4,500.0		Bottom Depth (ftKB) 4,540.0			
Description Remedial Casing Cement				Top Depth (ftKB) 10.0		Bottom Depth (ftKB) 682.0			
Tubing Strings									
Tubing Description Tubing - Production		Run Date 8/27/2008	String... 2 3/8	ID (in) 1.867	Wt (lb/ft) 4.70	Grade N-80	Len (ft) 7,100.01	Set De...	
Tubing Description Tubing - Production		Run Date 1/26/2015	String... 2 3/8	ID (in) 1.995	Wt (lb/ft) 4.70	Grade J-55	Len (ft) 6,913.10	Set De...	
Tubing Components									
Item Des		OD (in)	Wt (lb/ft)	Grade	Jts	Len (ft)	Btm (ftKB)	Btm (TVD) (ftKB)	
EUE 8rd Tubing		2 3/8	4.70	J-55	220	6,911.10	6,921.1		
Seal Nipple		2 3/8			1	1.00	6,922.1		
Notched collar		2 3/8			1	1.00	6,923.1		
Perforation Data									
Zone		Bnch/St g	Entered Shot Total	Top (ftKB)		Btm (ftKB)		Date	
SUSSEX, ORIGINAL HOLE			20	4,500.00		4,510.00		8/24/1990	
SUSSEX, ORIGINAL HOLE			5	4,530.00		4,540.00		8/24/1990	
NIOBRARA, ORIGINAL HOLE		A	12	6,942.00		6,948.00		8/18/2008	

Well Name: FREEDOM TWO C 19-4

VERTICAL - ORIGINAL HOLE, 10/22/2015 9:52:00 AM



Perforation Data						
Zone	Brnch/St g	Entered Shot Total	Top (ftKB)	Btm (ftKB)	Date	
NIOBRARA, ORIGINAL HOLE	B	16	7,032.01	7,040.01	8/18/2008	
NIOBRARA, ORIGINAL HOLE	B	6	7,034.00	7,040.00	7/9/1990	
NIOBRARA, ORIGINAL HOLE	C	20	7,120.00	7,130.00	8/18/2008	
CODELL, ORIGINAL HOLE		8	7,133.00	7,141.00	7/9/1990	
CODELL, ORIGINAL HOLE		30	7,135.00	7,150.00	8/18/2008	

Stimulations & Treatments			
Date	Zone	Primary Job Type	
7/9/1990	NIOBRARA-CODELL, ORIGINAL HOLE	DRILLING/COMPLETION - ORIGINAL	
Technical Result	Tech Result Details		Tech Result Note

Comment			
LIMITED ENTRY			
Date	Zone	Primary Job Type	
8/25/1990	SUSSEX, ORIGINAL HOLE	DRILLING/COMPLETION - ORIGINAL	
Technical Result	Tech Result Details		Tech Result Note

Comment			
Date	Zone	Primary Job Type	
8/19/2008	CODELL, ORIGINAL HOLE	RE-FRAC	
Technical Result	Tech Result Details		Tech Result Note

Comment			
Date	Zone	Primary Job Type	
8/20/2008	NIOBRARA, ORIGINAL HOLE	RE-FRAC	
Technical Result	Tech Result Details		Tech Result Note

Other In Hole				
Run Date	Des	OD (in)	Top (ftKB)	Btm (ftKB)

Logs				
Date	Type	Top, MD (ftKB)	Btm, MD (ftKB)	
7/2/1990	INDUCTION	4,740.0	7,246.0	
7/3/1990	COMPENSATED DENSITY	3,600.0	4,600.0	
7/3/1990	MICROLOG	3,600.0	4,600.0	
7/7/1990	CBL/CCL/GR	3,300.0	7,164.0	
7/7/1990	PERFORATION	6,900.0	7,100.0	
7/23/2014	CBL/CCL/GR	0.0	1,000.0	