

T10N, R58W, 6th P.M.

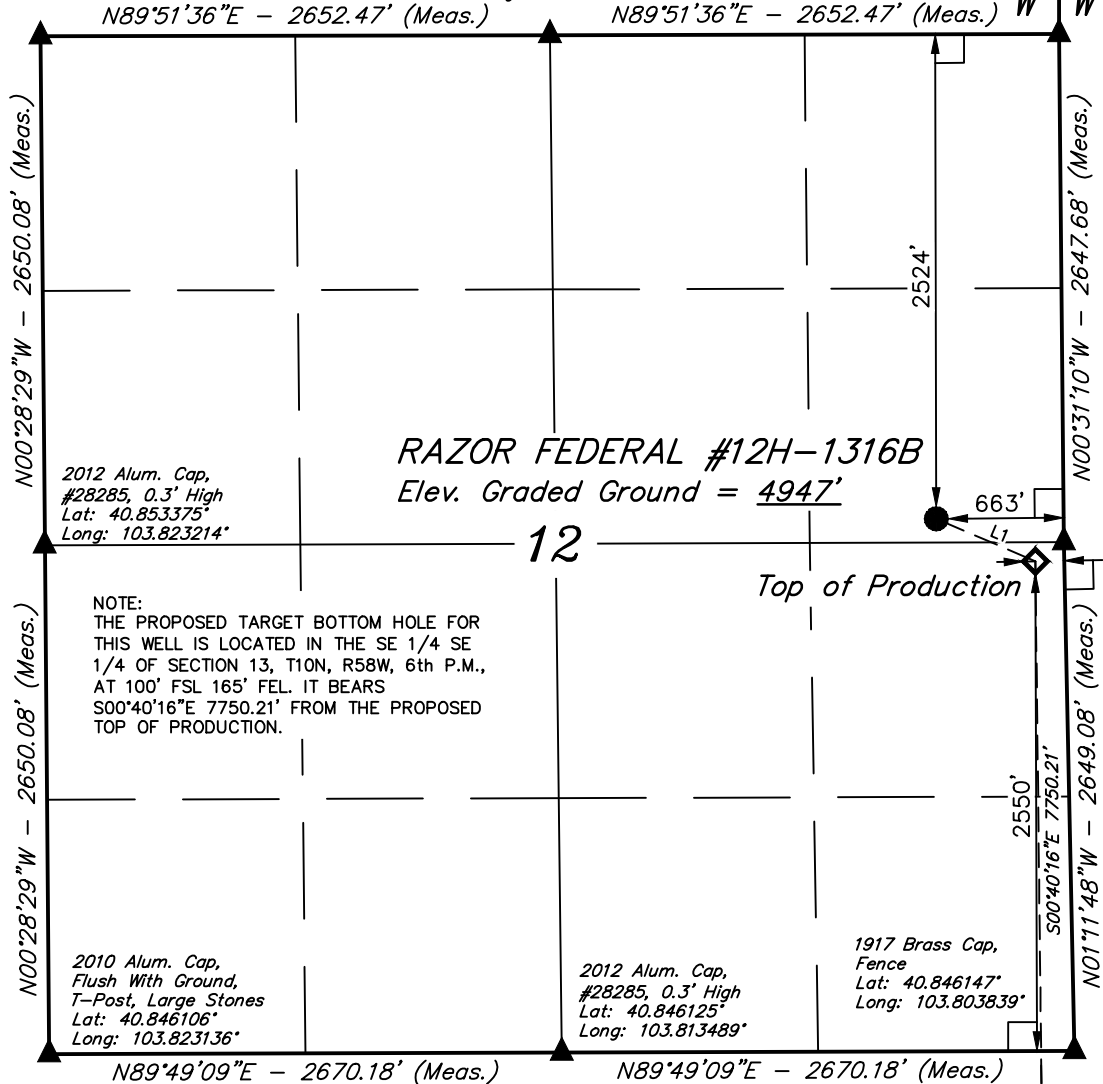
WHITING OIL & GAS CORP.

2012 Alum. Cap,
#28285, 0.3' High
Lat: 40.860647°
Long: 103.823292°

2012 Alum. Cap,
#28285, 0.3' High
Lat: 40.860664°
Long: 103.813706°

2006 Alum. Cap,
#24949,
0.6' Below Ground
Lat: 40.860678°
Long: 103.804117°

R 58
W 57



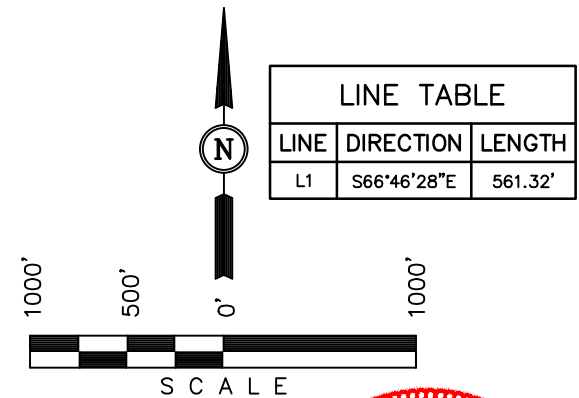
Well location, RAZOR FEDERAL #12H-1316B
(SURFACE LOCATION), located as shown in the SE
1/4 NE 1/4 of Section 12, T10N, R58W, 6th P.M.,
Weld County, Colorado.

BASIS OF ELEVATION

SPOT ELEVATION LOCATED AT THE NORTHEAST CORNER OF
SECTION 15, T9N, R58W, 6th P.M. TAKEN FROM THE
GATEHOOK SPRING, QUADRANGLE, COLORADO, WELD COUNTY,
7.5 MINUTE QUAD (TOPOGRAPHIC MAP) PUBLISHED BY THE
UNITED STATES DEPARTMENT OF THE INTERIOR, GEOLOGICAL
SURVEY. SAID ELEVATION IS MARKED AS BEING 4679 FEET.

BASIS OF BEARINGS

BASIS OF BEARINGS IS A G.P.S. OBSERVATION.



CERTIFICATION

THIS IS TO CERTIFY THAT THE ABOVE PLAT WAS PREPARED FROM
FIELD NOTES OF ACTUAL SURVEYS MADE BY ME OR UNDER MY
SUPERVISION AND THAT THE SAME ARE TRUE AND CORRECT TO THE
BEST OF MY KNOWLEDGE AND BELIEF.

REGISTERED LAND SURVEYOR
REGISTRATION NO. 28285
STATE OF COLORADO

REVISED: 10-19-15 K.B.
REVISED: 07-12-13

UINTAH ENGINEERING & LAND SURVEYING
85 SOUTH 200 EAST - VERNAL, UTAH 84078
(435) 789-1017

LEGEND:

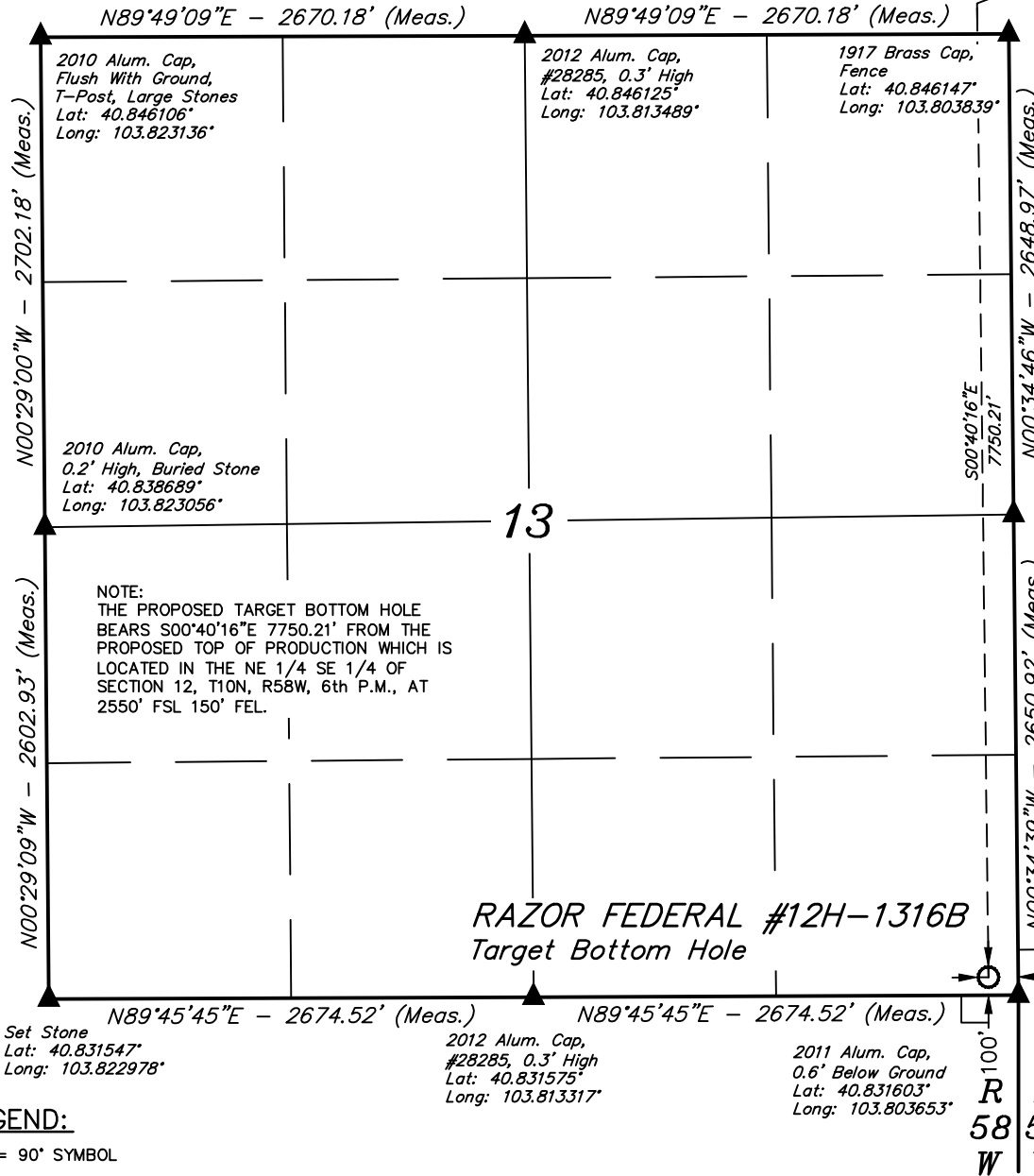
- = 90° SYMBOL
- = PROPOSED WELLHEAD.
- ◆ = TOP OF PRODUCTION.
- = TARGET BOTTOM HOLE.
- ▲ = SECTION CORNERS LOCATED.

NAD 83 (TOP OF PRODUCTION)	NAD 83 (SURFACE LOCATION)
LATITUDE = 40°51'11.31" (40.853142)	LATITUDE = 40°51'13.50" (40.853750)
LONGITUDE = 103°48'16.45" (103.804569)	LONGITUDE = 103°48'23.16" (103.806433)
NAD 27 (TOP OF PRODUCTION)	NAD 27 (SURFACE LOCATION)
LATITUDE = 40°51'11.36" (40.853156)	LATITUDE = 40°51'13.55" (40.853764)
LONGITUDE = 103°48'14.65" (103.804069)	LONGITUDE = 103°48'21.36" (103.805933)

SCALE 1" = 1000'	DATE SURVEYED: 05-10-13	DATE DRAWN: 05-15-13
PARTY J.H. C.M. A.D.	REFERENCES G.L.O. PLAT	
WEATHER WARM	FILE WHITING OIL & GAS CORP.	

T10N, R58W, 6th P.M.

Top of Production



LEGEND:

- └─┘ = 90° SYMBOL
- = PROPOSED WELLHEAD.
- ◆ = TOP OF PRODUCTION.
- = TARGET BOTTOM HOLE.
- ▲ = SECTION CORNERS LOCATED.

NAD 83 (TARGET BOTTOM HOLE)	
LATITUDE = 40°49'54.75" (40.831875)	
LONGITUDE = 103°48'15.31" (103.804253)	
NAD 27 (TARGET BOTTOM HOLE)	
LATITUDE = 40°49'54.81" (40.831892)	
LONGITUDE = 103°48'13.51" (103.803753)	

WHITING OIL & GAS CORP.

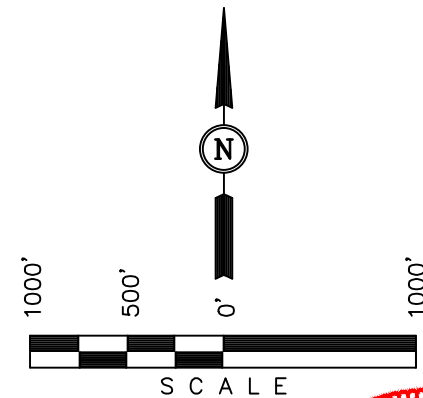
Well location, RAZOR FEDERAL #12H-1316B (TARGET BOTTOM HOLE), located as shown in the SE 1/4 SE 1/4 of Section 13, T10N, R58W, 6th P.M., Weld County, Colorado.

BASIS OF ELEVATION

SPOT ELEVATION LOCATED AT THE NORTHEAST CORNER OF SECTION 15, T9N, R58W, 6th P.M. TAKEN FROM THE GATEHOOK SPRING, QUADRANGLE, COLORADO, WELD COUNTY, 7.5 MINUTE QUAD (TOPOGRAPHIC MAP) PUBLISHED BY THE UNITED STATES DEPARTMENT OF THE INTERIOR, GEOLOGICAL SURVEY. SAID ELEVATION IS MARKED AS BEING 4679 FEET.

BASIS OF BEARINGS

BASIS OF BEARINGS IS A G.P.S. OBSERVATION.



CERTIFICATION

THIS IS TO CERTIFY THAT THE ABOVE PLAT WAS PREPARED FROM FIELD NOTES OF ACTUAL SURVEYS MADE BY ME OR UNDER MY SUPERVISION AND THAT THE SAME ARE TRUE AND CORRECT TO THE BEST OF MY KNOWLEDGE AND BELIEF.

REGISTERED LAND SURVEYOR
REGISTRATION NO. 28285
STATE OF COLORADO
10-19-15

REVISED: 10-19-15 K.B.

UINTAH ENGINEERING & LAND SURVEYING
85 SOUTH 200 EAST - VERNAL, UTAH 84078
(435) 789-1017

SCALE 1" = 1000'	DATE SURVEYED: 05-10-13	DATE DRAWN: 05-15-13
PARTY J.H. C.M. A.D.	REFERENCES G.L.O. PLAT	
WEATHER WARM	FILE WHITING OIL & GAS CORP.	