

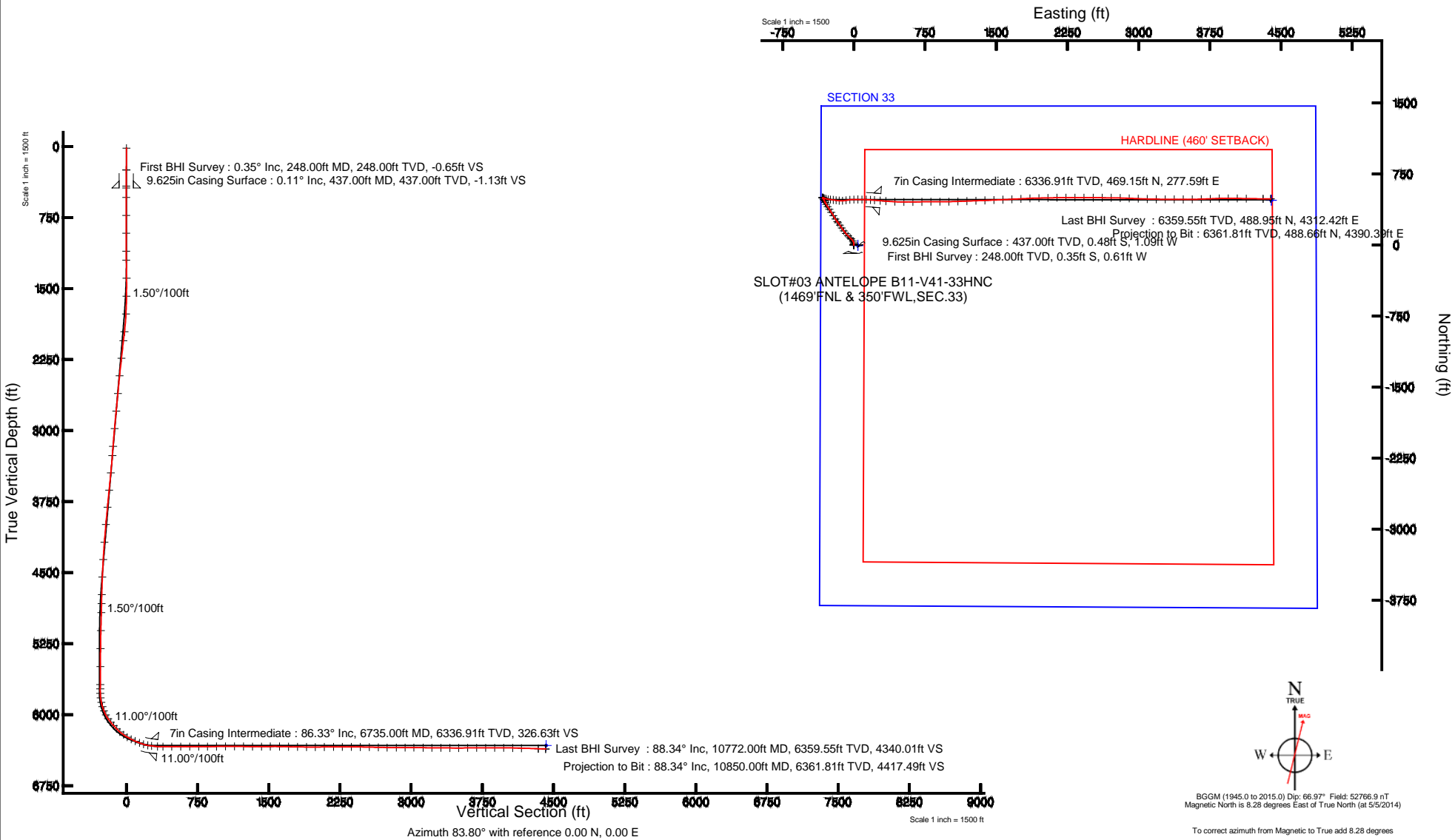
BONANZA CREEK OIL COMPANY

Location: COLORADO Slot: SLOT#03 ANTELOPE B11-V41-33HNC (1469'FNL & 350'FWL,SEC.33)
Field: WELD COUNTY Well: ANTELOPE B11-V41-33HNC
Facility: SEC.33-T5N-R62W Wellbore: ANTELOPE B11-V41-33HNC PWB

Plot reference wellpath is ANTELOPE B11-V41-33HNC (REV-B.0) PWP	
True vertical depths are referenced to RIG (RKB)	Grid System: NAD83 / Lambert Colorado SP, Northern Zone (501), US feet
Measured depths are referenced to RIG (RKB)	North Reference: True north
RIG (RKB) to Mean Sea Level: 4596 feet	Scale: True distance
Mean Sea Level to Mud line (At Slot: SLOT#03 ANTELOPE B11-V41-33HNC (1469'FNL & 350'FWL,SEC.33)): 0 feet	Depths are in feet
Coordinates are in feet referenced to Slot	Created by: guenaler on 10/23/2014

Location Information

Facility Name			Grid East (US ft)	Grid North (US ft)	Latitude	Longitude
SEC.33-T5N-R62W			3324131.293	1375892.189	40°21'33.804"N	104°20'12.696"W
Slot	Local N (ft)	Local E (ft)	Grid East (US ft)	Grid North (US ft)	Latitude	Longitude
SLOT#03 ANTELOPE B11-V41-33HNC (1469'FNL & 350'FWL,SEC.33)	3.64	-41.80	3324089.447	1375895.284	40°21'33.840"N	104°20'13.236"W
RIG (RKB) to Mud line (At Slot: SLOT#03 ANTELOPE B11-V41-33HNC (1469'FNL & 350'FWL,SEC.33))					4596ft	
Mean Sea Level to Mud line (At Slot: SLOT#03 ANTELOPE B11-V41-33HNC (1469'FNL & 350'FWL,SEC.33))					0ft	
RIG (RKB) to Mean Sea Level					4596ft	





Actual Wellpath Report

ANTELOPE B11-V41-33HNC AWP

Page 1 of 7



REFERENCE WELLPATH IDENTIFICATION

Operator	BONANZA CREEK OIL COMPANY	Slot	SLOT#03 ANTELOPE B11-V41-33HNC (1469'FNL & 350'FWL,SEC.33)
Area	COLORADO	Well	ANTELOPE B11-V41-33HNC
Field	WELD COUNTY	Wellbore	ANTELOPE B11-V41-33HNC AWB
Facility	SEC.33-T5N-R62W		

REPORT SETUP INFORMATION

Projection System	NAD83 / Lambert Colorado SP, Northern Zone (501), US feet	Software System	WellArchitect® 4.0.0
North Reference	True	User	Guenaler
Scale	0.999959	Report Generated	10/23/2014 at 11:02:08 AM
Convergence at slot	n/a	Database/Source file	WA_Denver/ANTELOPE_B11-V41-33HNC_AWB.xml

WELLPATH LOCATION

	Local coordinates		Grid coordinates		Geographic coordinates	
	North[ft]	East[ft]	Easting[US ft]	Northing[US ft]	Latitude	Longitude
Slot Location	3.64	-41.80	3324089.45	1375895.28	40°21'33.840"N	104°20'13.236"W
Facility Reference Pt			3324131.29	1375892.19	40°21'33.804"N	104°20'12.696"W
Field Reference Pt			3335925.10	1457282.25	40°34'56.460"N	104°17'26.016"W

WELLPATH DATUM

Calculation method	Minimum curvature	RIG (RKB) to Facility Vertical Datum	4596.00ft
Horizontal Reference Pt	Slot	RIG (RKB) to Mean Sea Level	4596.00ft
Vertical Reference Pt	RIG (RKB)	RIG (RKB) to Mud Line at Slot (SLOT#03 ANTELOPE B11-V41-33HNC (1469'FNL & 350'FWL,SEC.33))	4596.00ft
MD Reference Pt	RIG (RKB)	Section Origin	N 0.00, E 0.00 ft
Field Vertical Reference	Mean Sea Level	Section Azimuth	83.80°



Actual Wellpath Report

ANTELOPE B11-V41-33HNC AWP

Page 2 of 7



REFERENCE WELLPATH IDENTIFICATION

Operator	BONANZA CREEK OIL COMPANY	Slot	SLOT#03 ANTELOPE B11-V41-33HNC (1469'FNL & 350'FWL,SEC.33)
Area	COLORADO	Well	ANTELOPE B11-V41-33HNC
Field	WELD COUNTY	Wellbore	ANTELOPE B11-V41-33HNC AWP
Facility	SEC.33-T5N-R62W		

WELLPATH DATA (98 stations) † = interpolated/extrapolated station

MD [ft]	Inclination [°]	Azimuth [°]	TVD [ft]	Vert Sect [ft]	North [ft]	East [ft]	Latitude	Longitude	DLS [°/100ft]	Comments
0.00†	0.000	240.020	0.00	0.00	0.00	0.00	40°21'33.840"N	104°20'13.236"W	0.00	
17.00	0.000	240.020	17.00	0.00	0.00	0.00	40°21'33.840"N	104°20'13.236"W	0.00	
248.00	0.350	240.020	248.00	-0.65	-0.35	-0.61	40°21'33.837"N	104°20'13.244"W	0.15	First BHI Survey
418.00	0.070	350.350	418.00	-1.13	-0.51	-1.08	40°21'33.835"N	104°20'13.250"W	0.22	
538.00	0.350	330.340	538.00	-1.28	-0.12	-1.27	40°21'33.839"N	104°20'13.252"W	0.24	
728.00	0.470	338.570	727.99	-1.71	1.11	-1.84	40°21'33.851"N	104°20'13.260"W	0.07	
917.00	0.340	17.320	916.99	-1.69	2.37	-1.96	40°21'33.863"N	104°20'13.261"W	0.16	
1107.00	0.220	321.360	1106.99	-1.66	3.19	-2.02	40°21'33.872"N	104°20'13.262"W	0.15	
1201.00	1.760	29.690	1200.97	-0.91	4.59	-1.42	40°21'33.885"N	104°20'13.254"W	1.80	
1392.00	3.560	2.830	1391.76	1.74	13.06	0.33	40°21'33.969"N	104°20'13.232"W	1.12	
1582.00	4.420	342.260	1581.31	1.20	25.92	-1.61	40°21'34.096"N	104°20'13.257"W	0.87	
1771.00	7.100	330.400	1769.34	-4.90	43.02	-9.60	40°21'34.265"N	104°20'13.360"W	1.54	
1961.00	9.980	313.840	1957.25	-20.14	64.64	-27.28	40°21'34.479"N	104°20'13.588"W	1.98	
2056.00	10.500	313.720	2050.73	-31.00	76.33	-39.48	40°21'34.594"N	104°20'13.746"W	0.55	
2244.00	9.400	312.310	2235.90	-52.21	98.50	-63.21	40°21'34.813"N	104°20'14.053"W	0.60	
2433.00	10.430	320.440	2422.09	-71.84	122.08	-85.52	40°21'35.046"N	104°20'14.341"W	0.92	
2622.00	10.780	324.640	2607.86	-89.86	149.68	-106.65	40°21'35.319"N	104°20'14.614"W	0.45	
2812.00	11.460	325.570	2794.29	-107.45	179.74	-127.60	40°21'35.616"N	104°20'14.884"W	0.37	
3001.00	10.530	324.700	2979.82	-124.73	209.33	-148.20	40°21'35.908"N	104°20'15.150"W	0.50	
3191.00	8.610	323.430	3167.17	-140.37	234.92	-166.71	40°21'36.161"N	104°20'15.389"W	1.02	
3289.00	9.010	323.670	3264.01	-147.93	246.99	-175.62	40°21'36.281"N	104°20'15.505"W	0.41	
3476.00	12.270	327.560	3447.77	-164.07	275.57	-194.96	40°21'36.563"N	104°20'15.754"W	1.78	
3662.00	13.360	328.510	3629.14	-181.99	310.57	-216.79	40°21'36.909"N	104°20'16.036"W	0.60	
3848.00	12.480	328.990	3810.43	-199.60	346.12	-238.37	40°21'37.260"N	104°20'16.315"W	0.48	
4034.00	10.930	326.620	3992.56	-216.09	378.08	-258.43	40°21'37.576"N	104°20'16.574"W	0.87	
4223.00	9.820	326.750	4178.46	-231.61	406.52	-277.12	40°21'37.857"N	104°20'16.816"W	0.59	
4408.00	7.890	329.830	4361.25	-243.94	430.69	-292.15	40°21'38.096"N	104°20'17.010"W	1.07	
4595.00	6.370	332.070	4546.80	-253.00	450.95	-303.46	40°21'38.296"N	104°20'17.156"W	0.83	
4782.00	5.820	339.070	4732.74	-259.25	468.98	-311.71	40°21'38.474"N	104°20'17.263"W	0.49	
4877.00	4.800	334.420	4827.34	-261.79	477.06	-315.15	40°21'38.554"N	104°20'17.307"W	1.16	



Actual Wellpath Report

ANTELOPE B11-V41-33HNC AWP

Page 3 of 7



REFERENCE WELLPATH IDENTIFICATION

Operator	BONANZA CREEK OIL COMPANY	Slot	SLOT#03 ANTELOPE B11-V41-33HNC (1469'FNL & 350'FWL,SEC.33)
Area	COLORADO	Well	ANTELOPE B11-V41-33HNC
Field	WELD COUNTY	Wellbore	ANTELOPE B11-V41-33HNC AWP
Facility	SEC.33-T5N-R62W		

WELLPATH DATA (98 stations)

MD [ft]	Inclination [°]	Azimuth [°]	TVD [ft]	Vert Sect [ft]	North [ft]	East [ft]	Latitude	Longitude	DLS [°/100ft]	Comments
4972.00	4.380	336.390	4922.03	-264.20	483.97	-318.32	40°21'38.622"N	104°20'17.348"W	0.47	
5163.00	2.880	319.820	5112.65	-269.06	494.32	-324.33	40°21'38.725"N	104°20'17.426"W	0.95	
5353.00	0.660	315.840	5302.54	-272.40	498.75	-328.18	40°21'38.768"N	104°20'17.475"W	1.17	
5543.00	0.460	278.320	5492.54	-273.82	499.65	-329.69	40°21'38.777"N	104°20'17.495"W	0.21	
5732.00	0.280	291.750	5681.53	-274.96	499.93	-330.87	40°21'38.780"N	104°20'17.510"W	0.11	
5779.00	0.260	312.970	5728.53	-275.13	500.04	-331.06	40°21'38.781"N	104°20'17.513"W	0.22	
5826.00	0.720	83.230	5775.53	-274.90	500.15	-330.84	40°21'38.782"N	104°20'17.510"W	1.94	
5873.00	6.900	101.930	5822.40	-271.92	499.60	-327.78	40°21'38.777"N	104°20'17.470"W	13.24	
5921.00	13.350	107.270	5869.63	-264.09	497.36	-319.66	40°21'38.755"N	104°20'17.365"W	13.56	
5968.00	18.250	109.780	5914.84	-252.49	493.25	-307.55	40°21'38.714"N	104°20'17.209"W	10.52	
6016.00	22.860	104.870	5959.78	-237.02	488.31	-291.46	40°21'38.665"N	104°20'17.001"W	10.25	
6064.00	28.950	100.000	6002.94	-217.15	483.90	-270.98	40°21'38.622"N	104°20'16.737"W	13.43	
6111.00	35.570	97.650	6042.67	-192.92	480.10	-246.20	40°21'38.584"N	104°20'16.416"W	14.33	
6159.00	39.720	96.680	6080.66	-164.40	476.46	-217.12	40°21'38.548"N	104°20'16.041"W	8.73	
6206.00	42.990	97.430	6115.94	-134.18	472.64	-186.31	40°21'38.510"N	104°20'15.643"W	7.04	
6253.00	44.560	95.070	6149.88	-102.44	469.11	-153.99	40°21'38.476"N	104°20'15.225"W	4.82	
6301.00	48.580	87.820	6182.89	-67.93	468.30	-119.19	40°21'38.468"N	104°20'14.776"W	13.79	
6349.00	54.500	80.350	6212.76	-30.41	472.27	-81.88	40°21'38.507"N	104°20'14.294"W	17.32	
6395.00	59.850	83.690	6237.69	8.21	477.60	-43.62	40°21'38.559"N	104°20'13.799"W	13.13	
6443.00	64.330	87.480	6260.16	50.58	480.83	-1.35	40°21'38.591"N	104°20'13.253"W	11.65	
6490.00	67.520	90.050	6279.33	93.32	481.75	41.55	40°21'38.600"N	104°20'12.699"W	8.42	
6538.00	67.440	90.730	6297.72	137.37	481.44	85.88	40°21'38.597"N	104°20'12.127"W	1.32	
6585.00	73.270	93.200	6313.51	181.16	479.91	130.10	40°21'38.582"N	104°20'11.555"W	13.35	
6632.00	80.160	93.900	6324.31	226.21	477.08	175.72	40°21'38.554"N	104°20'10.966"W	14.73	
6673.00	82.060	94.480	6330.64	266.05	474.12	216.12	40°21'38.525"N	104°20'10.444"W	4.84	
6794.00	90.400	95.000	6338.59	384.49	464.14	336.34	40°21'38.427"N	104°20'08.891"W	6.91	
6889.00	90.430	92.930	6337.90	477.99	457.58	431.11	40°21'38.362"N	104°20'07.667"W	2.18	
6984.00	89.970	90.140	6337.57	572.12	455.03	526.06	40°21'38.336"N	104°20'06.440"W	2.98	
7079.00	89.820	89.140	6337.75	666.62	455.63	621.06	40°21'38.342"N	104°20'05.213"W	1.06	
7174.00	89.940	89.190	6337.95	761.21	457.01	716.05	40°21'38.356"N	104°20'03.986"W	0.14	



Actual Wellpath Report

ANTELOPE B11-V41-33HNC AWP

Page 4 of 7



REFERENCE WELLPATH IDENTIFICATION			
Operator	BONANZA CREEK OIL COMPANY	Slot	SLOT#03 ANTELOPE B11-V41-33HNC (1469'FNL & 350'FWL,SEC.33)
Area	COLORADO	Well	ANTELOPE B11-V41-33HNC
Field	WELD COUNTY	Wellbore	ANTELOPE B11-V41-33HNC AWP
Facility	SEC.33-T5N-R62W		

WELLPATH DATA (98 stations)										
MD [ft]	Inclination [°]	Azimuth [°]	TVD [ft]	Vert Sect [ft]	North [ft]	East [ft]	Latitude	Longitude	DLS [°/100ft]	Comments
7269.00	90.280	89.760	6337.76	855.74	457.88	811.04	40°21'38.365"N	104°20'02.759"W	0.70	
7364.00	90.920	90.400	6336.77	950.17	457.75	906.04	40°21'38.363"N	104°20'01.532"W	0.95	
7459.00	90.150	88.510	6335.88	1044.69	458.65	1001.02	40°21'38.372"N	104°20'00.305"W	2.15	
7554.00	89.600	88.400	6336.09	1139.38	461.22	1095.99	40°21'38.397"N	104°19'59.078"W	0.59	
7649.00	89.600	87.750	6336.75	1234.11	464.41	1190.93	40°21'38.429"N	104°19'57.852"W	0.68	
7744.00	89.540	87.740	6337.46	1328.89	468.14	1285.85	40°21'38.466"N	104°19'56.626"W	0.06	
7839.00	90.090	88.060	6337.77	1423.64	471.63	1380.79	40°21'38.500"N	104°19'55.399"W	0.67	
7933.00	90.860	87.500	6336.99	1517.41	475.27	1474.72	40°21'38.536"N	104°19'54.186"W	1.01	
8029.00	89.050	87.660	6337.07	1613.20	479.32	1570.63	40°21'38.576"N	104°19'52.947"W	1.89	
8124.00	88.520	86.910	6339.08	1708.00	483.82	1665.50	40°21'38.620"N	104°19'51.721"W	0.97	
8219.00	89.320	87.110	6340.87	1802.83	488.77	1760.35	40°21'38.669"N	104°19'50.496"W	0.87	
8314.00	89.350	87.200	6341.97	1897.67	493.49	1855.23	40°21'38.716"N	104°19'49.270"W	0.10	
8408.00	90.310	89.220	6342.25	1991.38	496.42	1949.17	40°21'38.745"N	104°19'48.057"W	2.38	
8503.00	90.550	88.760	6341.54	2085.99	498.10	2044.16	40°21'38.761"N	104°19'46.830"W	0.55	
8599.00	90.740	89.140	6340.46	2181.59	499.86	2140.13	40°21'38.779"N	104°19'45.590"W	0.44	
8694.00	89.780	89.830	6340.03	2276.12	500.71	2235.13	40°21'38.787"N	104°19'44.363"W	1.24	
8788.00	89.320	90.360	6340.77	2369.55	500.56	2329.12	40°21'38.785"N	104°19'43.149"W	0.75	
8884.00	89.720	90.210	6341.57	2464.94	500.08	2425.12	40°21'38.780"N	104°19'41.909"W	0.44	
8979.00	88.600	90.330	6342.96	2559.32	499.63	2520.11	40°21'38.776"N	104°19'40.682"W	1.19	
9074.00	88.830	90.060	6345.09	2653.71	499.31	2615.08	40°21'38.773"N	104°19'39.455"W	0.37	
9169.00	88.300	90.350	6347.47	2748.08	498.97	2710.05	40°21'38.769"N	104°19'38.228"W	0.64	
9265.00	90.030	91.940	6348.87	2843.28	497.05	2806.01	40°21'38.750"N	104°19'36.988"W	2.45	
9359.00	90.030	92.290	6348.82	2936.29	493.58	2899.95	40°21'38.716"N	104°19'35.775"W	0.37	
9454.00	89.970	92.360	6348.82	3030.24	489.73	2994.87	40°21'38.678"N	104°19'34.549"W	0.10	
9550.00	89.570	91.470	6349.21	3125.28	486.52	3090.82	40°21'38.646"N	104°19'33.309"W	1.02	
9645.00	89.480	90.950	6350.00	3219.48	484.51	3185.79	40°21'38.626"N	104°19'32.082"W	0.56	
9740.00	89.690	90.720	6350.68	3313.76	483.13	3280.78	40°21'38.612"N	104°19'30.855"W	0.33	
9835.00	89.260	90.370	6351.55	3408.10	482.22	3375.77	40°21'38.603"N	104°19'29.628"W	0.58	
9929.00	90.150	89.960	6352.04	3501.52	481.95	3469.77	40°21'38.600"N	104°19'28.414"W	1.04	
10024.00	90.590	89.110	6351.43	3596.04	482.72	3564.76	40°21'38.608"N	104°19'27.187"W	1.01	



Actual Wellpath Report

ANTELOPE B11-V41-33HNC AWP

Page 5 of 7



REFERENCE WELLPATH IDENTIFICATION			
Operator	BONANZA CREEK OIL COMPANY	Slot	SLOT#03 ANTELOPE B11-V41-33HNC (1469'FNL & 350'FWL,SEC.33)
Area	COLORADO	Well	ANTELOPE B11-V41-33HNC
Field	WELD COUNTY	Wellbore	ANTELOPE B11-V41-33HNC AWB
Facility	SEC.33-T5N-R62W		

WELLPATH DATA (98 stations)										
MD [ft]	Inclination [°]	Azimuth [°]	TVD [ft]	Vert Sect [ft]	North [ft]	East [ft]	Latitude	Longitude	DLS [°/100ft]	Comments
10119.00	89.940	88.040	6350.99	3690.71	485.09	3659.73	40°21'38.631"N	104°19'25.960"W	1.32	
10214.00	89.910	87.470	6351.11	3785.48	488.81	3754.66	40°21'38.667"N	104°19'24.734"W	0.60	
10309.00	90.060	88.580	6351.14	3880.22	492.08	3849.60	40°21'38.700"N	104°19'23.507"W	1.18	
10404.00	90.340	89.630	6350.80	3974.82	493.57	3944.58	40°21'38.714"N	104°19'22.280"W	1.14	
10499.00	88.580	91.410	6351.70	4069.15	492.70	4039.57	40°21'38.705"N	104°19'21.053"W	2.63	
10594.00	88.280	90.950	6354.30	4163.33	490.75	4134.51	40°21'38.686"N	104°19'19.827"W	0.58	
10772.00	88.340	90.210	6359.55	4340.01	488.95	4312.42	40°21'38.668"N	104°19'17.529"W	0.42	Last BHI Survey
10850.00	88.340	90.210	6361.81	4417.49	488.66	4390.39	40°21'38.665"N	104°19'16.521"W	0.00	Projection to Bit

HOLE & CASING SECTIONS - Ref Wellbore: ANTELOPE B11-V41-33HNC AWB Ref Wellpath: ANTELOPE B11-V41-33HNC AWP										
String/Diameter	Start MD [ft]	End MD [ft]	Interval [ft]	Start TVD [ft]	End TVD [ft]	Start N/S [ft]	Start E/W [ft]	End N/S [ft]	End E/W [ft]	
13.5in Open Hole	17.00	437.00	420.00	17.00	437.00	0.00	0.00	-0.48	-1.09	
9.625in Casing Surface	17.00	437.00	420.00	17.00	437.00	0.00	0.00	-0.48	-1.09	
8.75in Open Hole	437.00	6735.00	6298.00	437.00	6336.91	-0.48	-1.09	469.15	277.59	
7in Casing Intermediate	17.00	6735.00	6718.00	17.00	6336.91	0.00	0.00	469.15	277.59	
6.125in Open Hole	6735.00	10850.00	4115.00	6336.91	6361.81	469.15	277.59	488.66	4390.39	



Actual Wellpath Report

ANTELOPE B11-V41-33HNC AWP

Page 6 of 7



REFERENCE WELLPATH IDENTIFICATION			
Operator	BONANZA CREEK OIL COMPANY	Slot	SLOT#03 ANTELOPE B11-V41-33HNC (1469'FNL & 350'FWL,SEC.33)
Area	COLORADO	Well	ANTELOPE B11-V41-33HNC
Field	WELD COUNTY	Wellbore	ANTELOPE B11-V41-33HNC AWB
Facility	SEC.33-T5N-R62W		

TARGETS									
Name	MD [ft]	TVD [ft]	North [ft]	East [ft]	Grid East [US ft]	Grid North [US ft]	Latitude	Longitude	Shape
ANTELOPE 11-41-33HNB SECTION 33		0.00	-3.64	41.80	3324131.29	1375892.19	40°21'33.804"N	104°20'12.696"W	polygon
ANTELOPE 11-41-33HNB HARDLINE (460' SETBACK)		6246.00	-3.64	41.80	3324131.29	1375892.19	40°21'33.804"N	104°20'12.696"W	polygon
ANTELOPE B11-V41-33HNB BHL REV-1 (981'FNL & 470'FEL,SEC.33)		6246.00	473.99	4397.63	3328480.29	1376426.89	40°21'38.520"N	104°19'16.428"W	point
ANTELOPE B11-V41-33HNC BHL REV-2 (981'FNL & 470'FEL,SEC.33)		6326.00	474.00	4397.63	3328480.29	1376426.89	40°21'38.520"N	104°19'16.428"W	point
RANCH 1-70 500'R		7075.00	-1472.78	2461.81	3326570.25	1374454.98	40°21'19.285"N	104°19'41.437"W	circle

WELLPATH COMPOSITION - Ref Wellbore: ANTELOPE B11-V41-33HNC AWB					Ref Wellpath: ANTELOPE B11-V41-33HNC AWP	
Start MD [ft]	End MD [ft]	Positional Uncertainty Model	Log Name/Comment		Wellbore	
17.00	6794.00	NaviTrak (Standard)	BHI/Navitrak MWD 8.75" Hole <248'-6794'>		ANTELOPE B11-V41-33HNC AWB	
6794.00	10772.00	NaviTrak (Standard)	BHI/Navitrak MWD 6.125" Hole <6889'-10772'>		ANTELOPE B11-V41-33HNC AWB	
10772.00	10850.00	Blind Drilling (std)	Projection to bit		ANTELOPE B11-V41-33HNC AWB	



Actual Wellpath Report
ANTELOPE B11-V41-33HNC AWP
Page 7 of 7



REFERENCE WELLPATH IDENTIFICATION			
Operator	BONANZA CREEK OIL COMPANY	Slot	SLOT#03 ANTELOPE B11-V41-33HNC (1469'FNL & 350'FWL,SEC.33)
Area	COLORADO	Well	ANTELOPE B11-V41-33HNC
Field	WELD COUNTY	Wellbore	ANTELOPE B11-V41-33HNC AWB
Facility	SEC.33-T5N-R62W		

WELLPATH COMMENTS				
MD [ft]	Inclination [°]	Azimuth [°]	TVD [ft]	Comment
248.00	0.350	240.020	248.00	First BHI Survey
10772.00	88.340	90.210	6359.55	Last BHI Survey
10850.00	88.340	90.210	6361.81	Projection to Bit