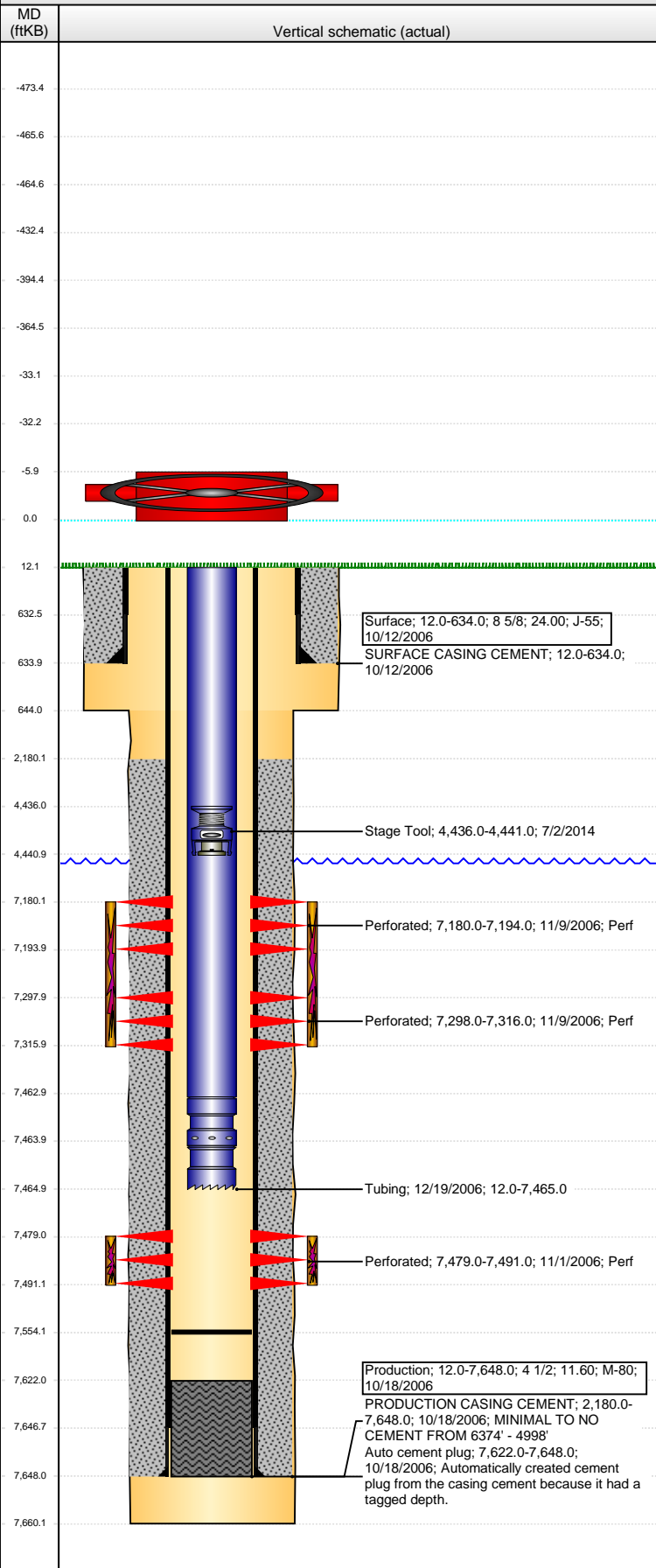


Well Name: AUFRECHT N02-08

DEVIATED - ORIGINAL HOLE, 10/21/2015 10:10:59 AM



Well Header

API	Business Unit	District	Well Config
05-123-24247	DJ BASIN	15	DEVIATED
Original KB Elevation (ft)	KB - GL / MSL (ftKB)	Spud Date	P & A Date
4,908.00	12.00	10/11/2006	
Comment			
Directions To Well			

Congressional Location

Quarter 1	Quarter 2	Quarter 3	Quarter 4	Section	Township	Twnshp N...	Range	Rng E/W Dir
		NW	NE	2	5	N	67	W

Bottom Hole Location

North-South Distance (ft)	From N or S Line	East-West Distance (ft)	From E or W Line
2,360.0	FNL	607.0	FEL

Plug Back Total Depths

Date	Depth (ftKB)	Method	Com
10/18/2006	7,632.0	CASING TALLY	LATCH DOWN BAFFLE
11/1/2006	7,622.0	CASED HOLE LOG	DEPTH LOGGER ON CBL
12/18/2006	7,554.0	TAG	C/O LND TBG

Wellbore Sections

Section Des	Size (in)	Act Top, MD (ftKB)	Act Btm, MD (ftKB)
SURFACE	12 1/4	12.0	644.0
PRODUCTION	7 7/8	644.0	7,660.0

Zone Statuses

Zone Name	Status Date	Status	Fluid Type	Job	Prod Method
NIOBRARA	11/11/2006	PR		DRILLING/CO...	
CODELL	11/11/2006	PR		DRILLING/CO...	

Casing Strings

Casing Description	Run Date	OD (in)	Wt/Len (l...	Grade	Top, MD (ft...	MD (ftKB)
Surface	10/12/2006	8 5/8	24.00	J-55	12.0	634.0

Production, 7,648.0ftKB

Casing Description	Run Date	OD (in)	Wt/Len (l...	Grade	Top, MD (ft...	MD (ftKB)
Production	10/18/2006	4 1/2	11.60	M-80	12.0	7,648.0

Cement

Description	Top Depth (ftKB)	Bottom Depth (ftKB)
SURFACE CASING CEMENT	12.0	634.0
Description	Top Depth (ftKB)	Bottom Depth (ftKB)
PRODUCTION CASING CEMENT	2,180.0	7,648.0

Tubing Strings

Tubing Description	Run Date	String...	ID (in)	Wt (lb/ft)	Grade	Len (ft)	Set De...
Tubing	12/19/2006	2 3/8	1.995	4.70	J-55	7,453.00	

Tubing Components

Item Des	OD (in)	Wt (lb/ft)	Grade	Jts	Len (ft)	Btm (ftKB)	Btm (TVD) (ftKB)
Tubing	2 3/8	4.70	J-55	228	7,451.00	7,463.0	
Seal Nipple	2 3/8				1.00	7,464.0	
Notched collar	2 3/8				1.00	7,465.0	

Perforation Data

Zone	Bnch/St g	Entered Shot Total	Top (ftKB)	Btm (ftKB)	Date
NIOBRARA, ORIGINAL HOLE		84	7,180.00	7,194.00	11/9/2006
NIOBRARA, ORIGINAL HOLE		108	7,298.00	7,316.00	11/9/2006
CODELL, ORIGINAL HOLE		48	7,479.00	7,491.00	11/1/2006

Stimulations & Treatments

Date	Zone	Primary Job Type
11/9/2006	CODELL, ORIGINAL HOLE	
Technical Result		Tech Result Note
Comment		

Date	Zone	Primary Job Type
11/9/2006	NIOBRARA, ORIGINAL HOLE	
Technical Result		Tech Result Note
Comment		

Well Name: AUFRECHT N02-08

DEVIATED - ORIGINAL HOLE, 10/21/2015 10:11:01 AM

Other In Hole

Run Date	Des	OD (in)	Top (ftKB)	Btm (ftKB)
7/2/2014	Stage Tool	2	4,436.0	4,441.0

Logs

Date	Type	Top, MD (ftKB)	Btm, MD (ftKB)
10/17/2006	COMPENSATED DENSITY	2,000.0	7,639.0
10/17/2006	INDUCTION	634.0	7,659.0
11/1/2006	CEMENT BOND	2,054.0	7,620.0

