

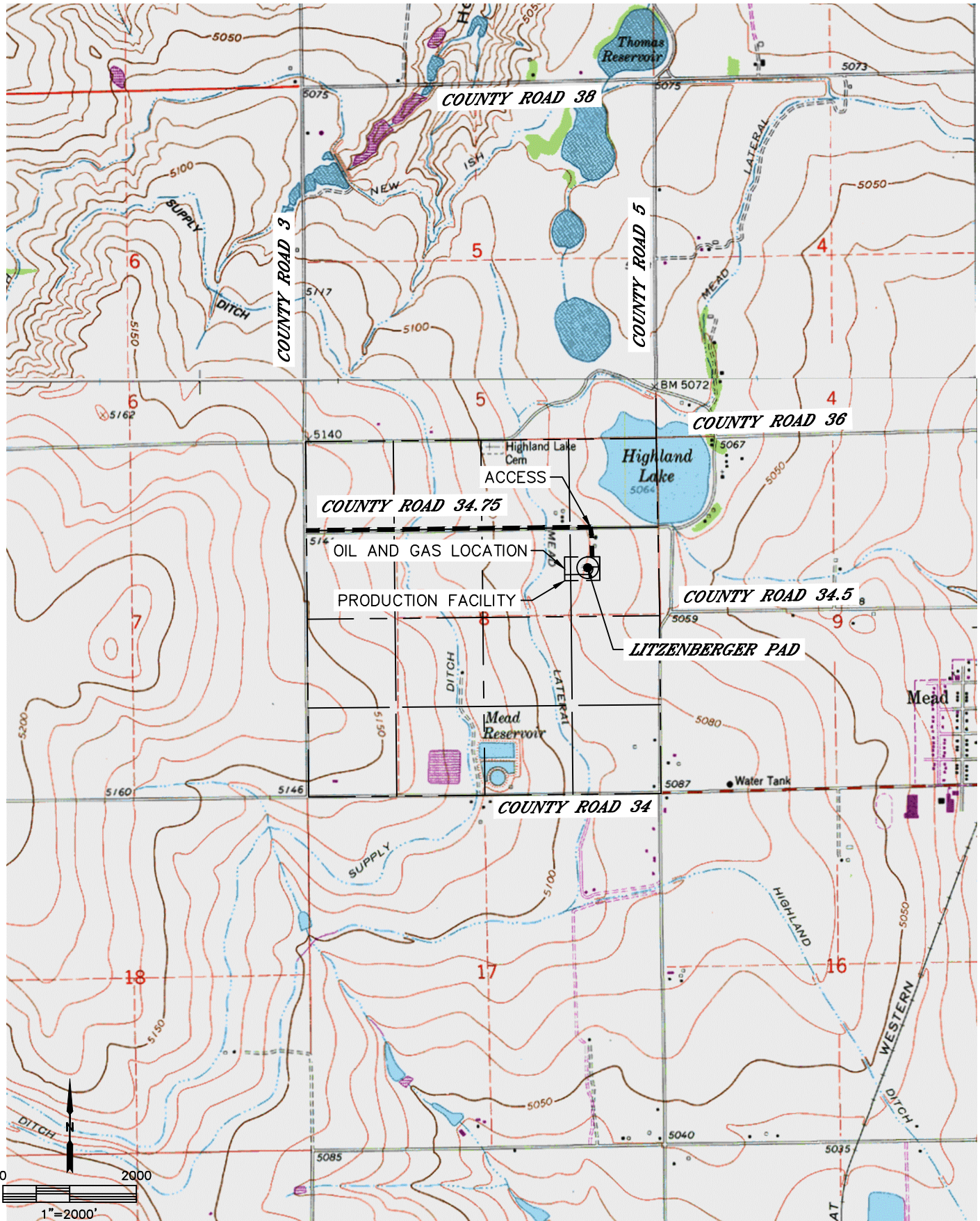


Lat40°, Inc. 6250 W. 10th Street, Unit 2, Greeley, CO 970-515-5294

ACCESS ROAD MAP

LITZENBERGER PAD

SECTION: 8
TOWNSHIP: 3N
RANGE: 68W
6TH. P.M.
WELD COUNTY, CO





Lat40°, Inc. 6250 W. 10th Street, Unit 2, Greeley, CO 970-515-5294

ACCESS ROAD MAP

LITZENBERGER PAD

SECTION: 8
TOWNSHIP: 3N
RANGE: 68W
6TH. P.M.
WELD COUNTY, CO

