

LWD REALTIME LOG - 8.750" SECTION



Drilling Dynamics
Gamma Ray

Scale:

1:240 TVD

Company: Noble Energy

Well: Wells Ranch AA11-632

Field: DU Basin

Driller's Depth

County:

Weld

Country: United States

Status:

Final Print

Surface Location:

Latitude:

Longitude:

Other Services:

API No: 05-123-41256

Job ID: 7285446

SEC: 11

TWN: 6N

RGE: 63W

Permanent Datum (P.D.): Mean Sea Level

Elevation:

Log Measured From: Rig Floor

Above P.D.

4884.00 ft

GL:

KB:

DF:

4884.00 ft

4854.00 ft

Dates

Interval Logged

Magnetic Field Reference

Date From: 2015-06-10

Top: (ft)

1800.00

Azi Reference North:

Grid

Dip Angle: (deg)

67.12

Date To: 2015-06-12

Bottom: (ft)

6758.00

Total Magnetic Field Strength: (nT)

Mag to Reference North Correction: (deg)

52728

Spud Date: 2015-06-05

7.65 E

Borehole Record

Casing Record

Hole Size (in)

From (ft)

To (ft)

Size (in)

Weight (lb/ft)

From (ft)

To (ft)

8.750

1853.00

13885.07

9.625

32.00

30.00

1840.00

Mud Record

Deviation Record

Type

From (ft)

To (ft)

Hole Size (in)

Interval (ft)

Inc | Az (Start)

Inc | Az (End)

Water Based Mud

1853.00

13885.07

8.750

12032.07

0.54 | 50.04

89.75 | 265.43

Acquisition System

Software Version

Other

Baker Hughes Cadence

1.0.6955.1

Prior Studio

1.0.7056.2

Rig:

H&P 326

Contractor:

Helmerich & Payne Drilling Co

District:

Weld

Unit:

NA

"These interpretations and analyses ("Interpretations") are opinions provided by Baker Hughes Oilfield Operations, Inc ("Baker Hughes"), based upon industry practice, empirical relationships, assumptions and measurements, (many of which may be provided by the customer). The Interpretations are not infallible and may be subject to different opinions. Vjwu."Dcmgt"Jwijgu"fqgu"pqv"ycttcpv"vjgkt"ceewtce{."eqttgevpguu."qt"eqorngvgpguu."qt"vjcv"vjg"ewuvqogtøu"cpflqt"cp{"vjktf"rctv{øu"tgnkcpeg"qp"uwej"Kpvgtrtgv cvkqpu"yknn"cee qornkuj"cp{"rctvkewnct"tguwnvu0"Vjg"ewuvqogt"cuuwogu"hwnn" responsibility for the use of the Interpretations and for decisions based thereon and the customer agrees to release, defend and indemnify Baker Hughes, its parent, subsidiaries and affiliated or related entities, and subcontractors, together with its and their officers, directors, employees, agents and invitees against, any and all claims, losses, damages, or expenses sustained by the customer or any third party arising out of reliance upon or use of the Interpretations, without regard to the cause(s) thereof, including without limitation any form of negligence on the

part of Baker Hughes. Unless other contract terms have been agreed to by the parties, each party's liabilities and obligations shall be limited to the amount of the cash or cash equivalent actually received by Baker Hughes from the other party in connection with the contract.

Log Run Summary

Run No	Bit Run No.	Bit Size (in)	Bit Type	Bit Gauge Length (in)	Assembly Type	Logged Interval		Bit Depth Interval		Date / Time		Circ. Hours (h)
						Top	Bottom	From	To	Start Logging	End Logging	
						(ft)	(ft)	(ft)	(ft)			
1	1	8.750	PDC	2.00	Motor	1808.26	6046.47	1853.00	6091.21	2015-06-10 09:36	2015-06-10 23:50	10.98
2	2	8.750	PDC	4.00	AutoTrak Curve	6078.76	13878.24	6091.21	13885.07	2015-06-11 09:44	2015-06-14 03:05	57.62

Crew

Name		Arrive Wellsite	Depart Wellsite	Name		Arrive Wellsite	Depart Wellsite	Name		Arrive Wellsite	Depart Wellsite
Adam Schlenz		2015-06-08	2015-06-15	Greg Rudolph		2015-06-08	2015-06-15	Nathan Leopold		2015-06-08	2015-06-15
Juan Chaparro		2015-06-10	2015-06-11	Lari Scarborough		2015-06-11	2015-06-14				

Equipment and Service Data

Run No.	Tool	Serial Number	Measurement	Sensor Offset (ft)	Bit Offset (ft)	Max O.D. (in)	Min I.D. (in)
1	NaviGamma	10481478	Gamma (single)	12.95	44.74	6.750	3.313
1	NaviGamma	10481478	VSS	16.33	48.12	6.750	3.313
1	NaviGamma	10481478	Directional (mag)	16.33	48.12	6.750	3.313
2	ATC_SU	12296367	Near Bit Inclination	5.93	6.83	7.000	4.330
2	ATC_MWD	12651936	Gamma (single)	2.22	12.45	7.000	3.250
2	ATC_MWD	12651936	Directional (mag)	12.29	22.52	7.000	3.250

Service and Tool Mnemonics

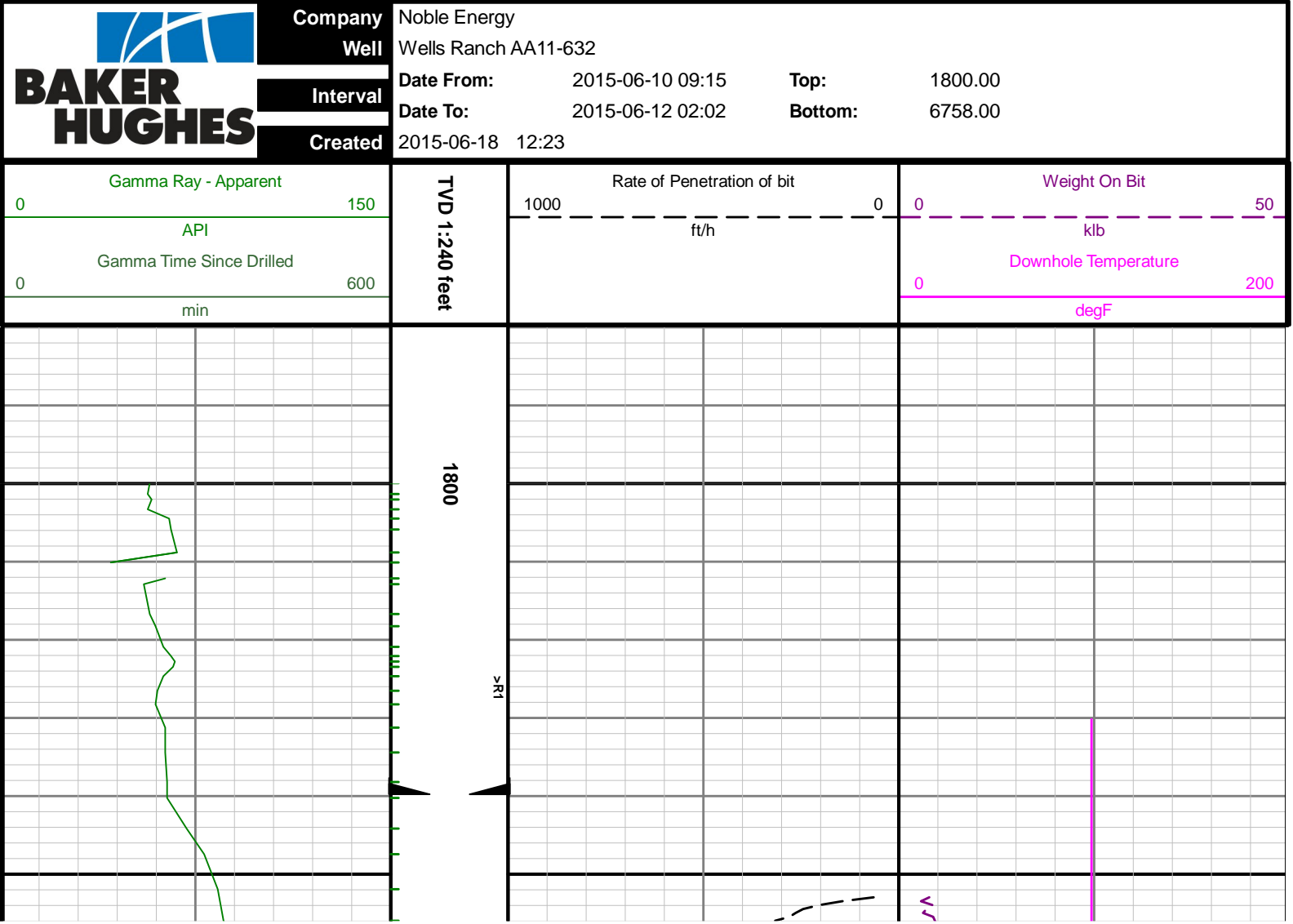
Mnemonic	Name	Description
GAM	NaviGamma	Probe Based Gamma Module, NaviTrak Platform
ATC_SU	ATC_SU	Auto Trak Curve Steering Unit
ATC_MWD	ATC_MWD	Auto Trak Curve MWD
ATC_LCPM	ATC_LCPM	Auto Trak Curve LCPM

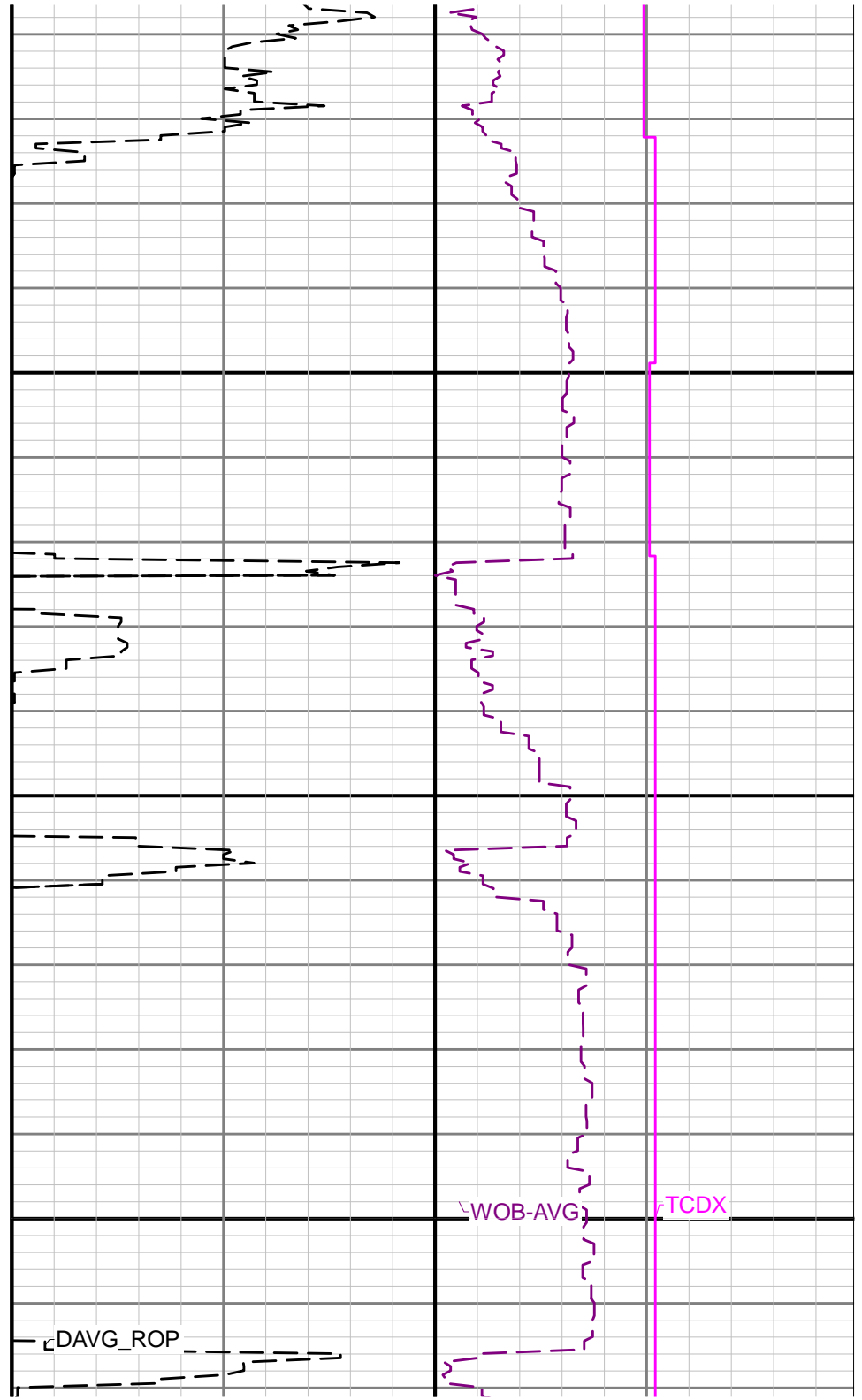
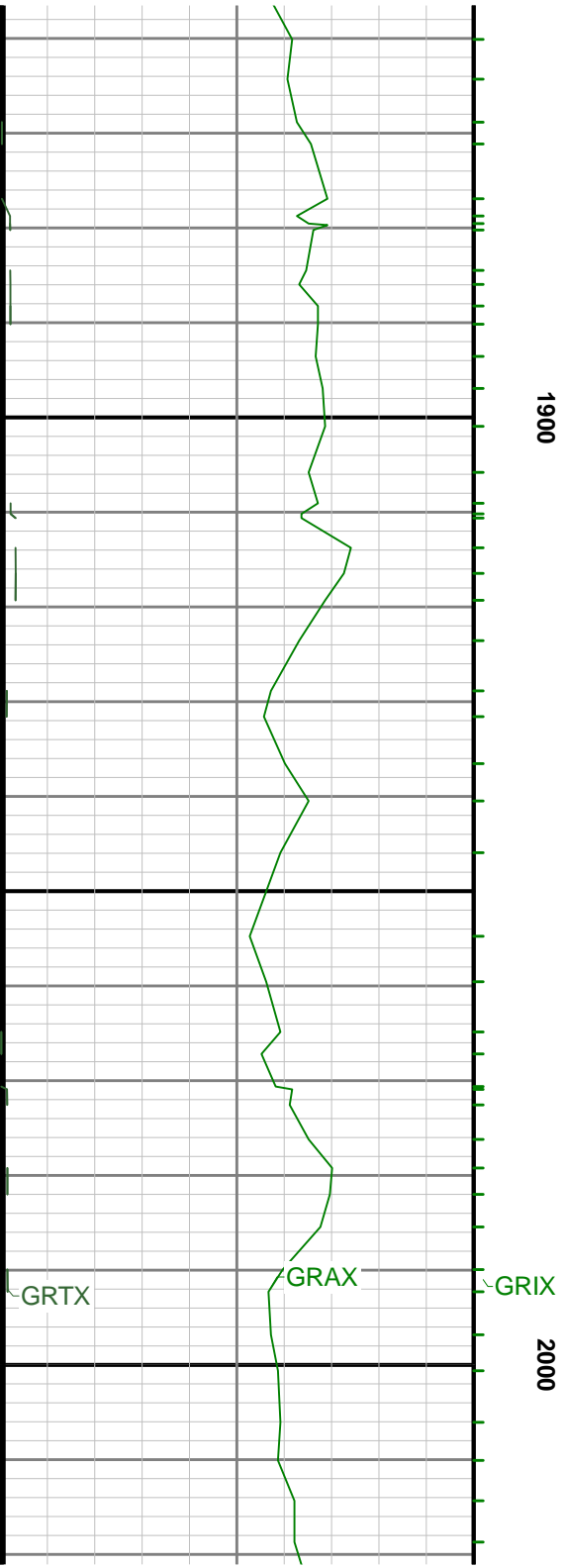
Remarks

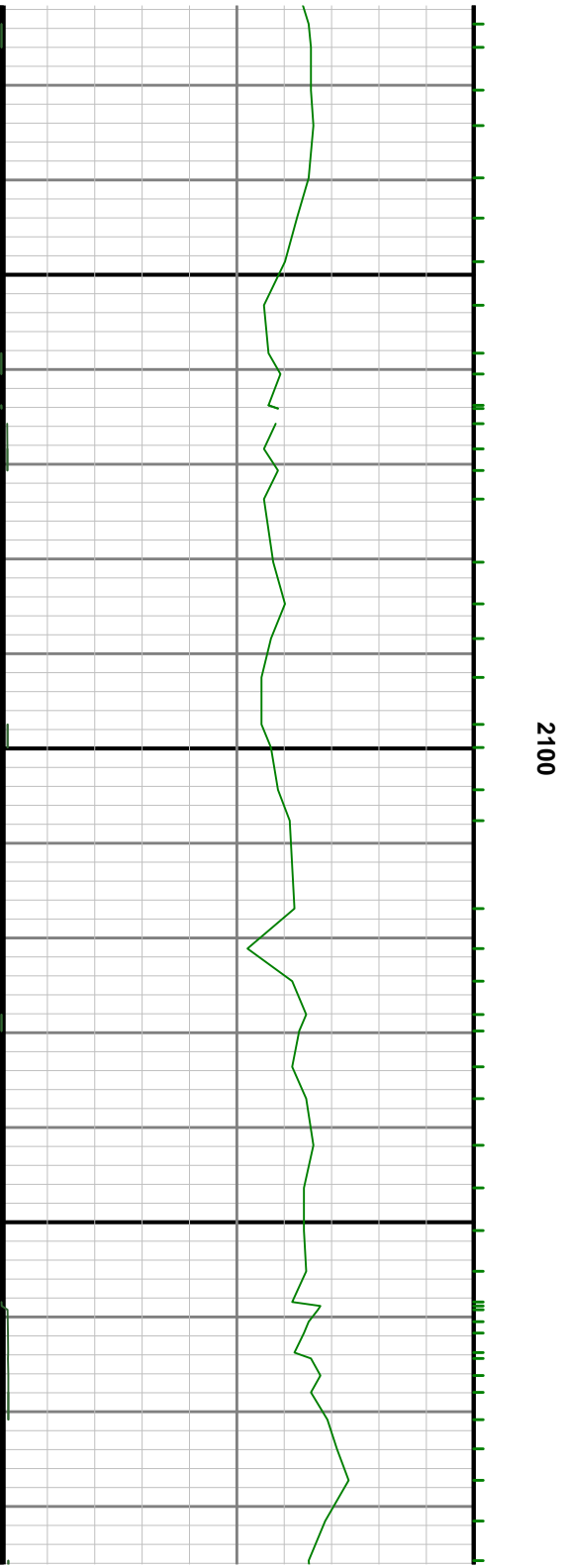
Number	Measured Depth (ft)	Hole Section (in)	Run No.	Remark
1	8814.79	8.750	2	Gap in Gamma Ray due to downlinking while drilling
2	12292.84	8.750	2	2 ft missing in hole depth from 12292.12292.5 to 12292.5 (ATC_MWD (ATC_MWD))

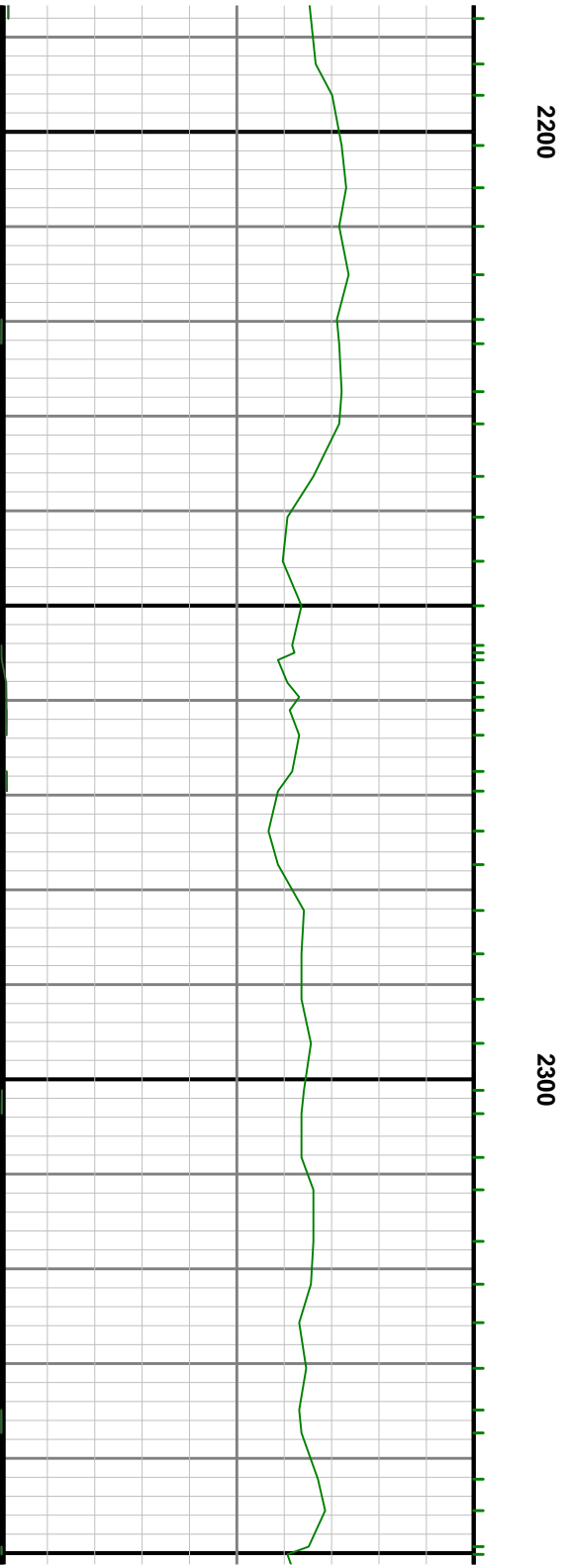
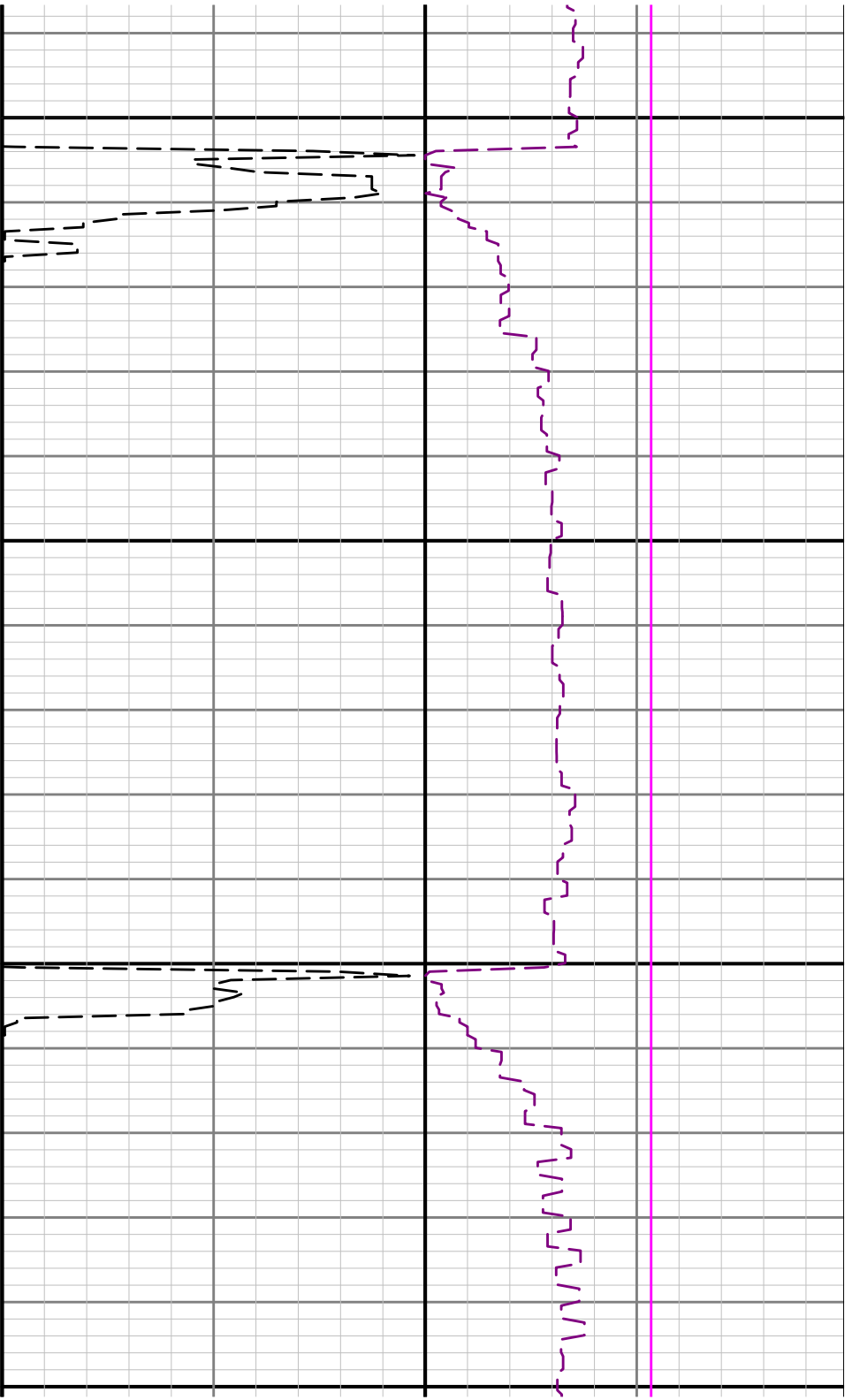
Curve Mnemonics

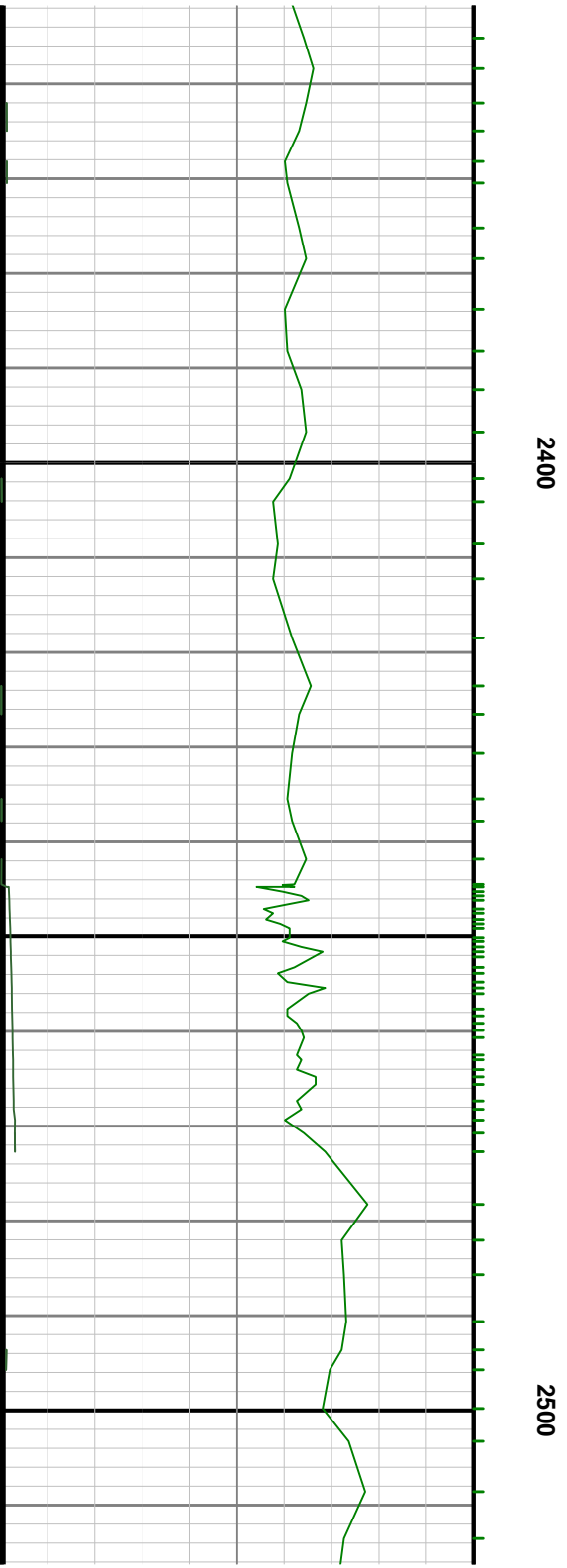
Presented Curves	Description	Units
DAVG_ROP	Depth Averaged ROP	ft/h
GRAX	Gamma Ray - Apparent	API
GRIX	Gamma Ray - Data Point Indicator	unitless
GRTX	Gamma Time Since Drilled	min
TCDX	Downhole Temperature	degF
WOB-AVG	Weight On Bit, Average	klb

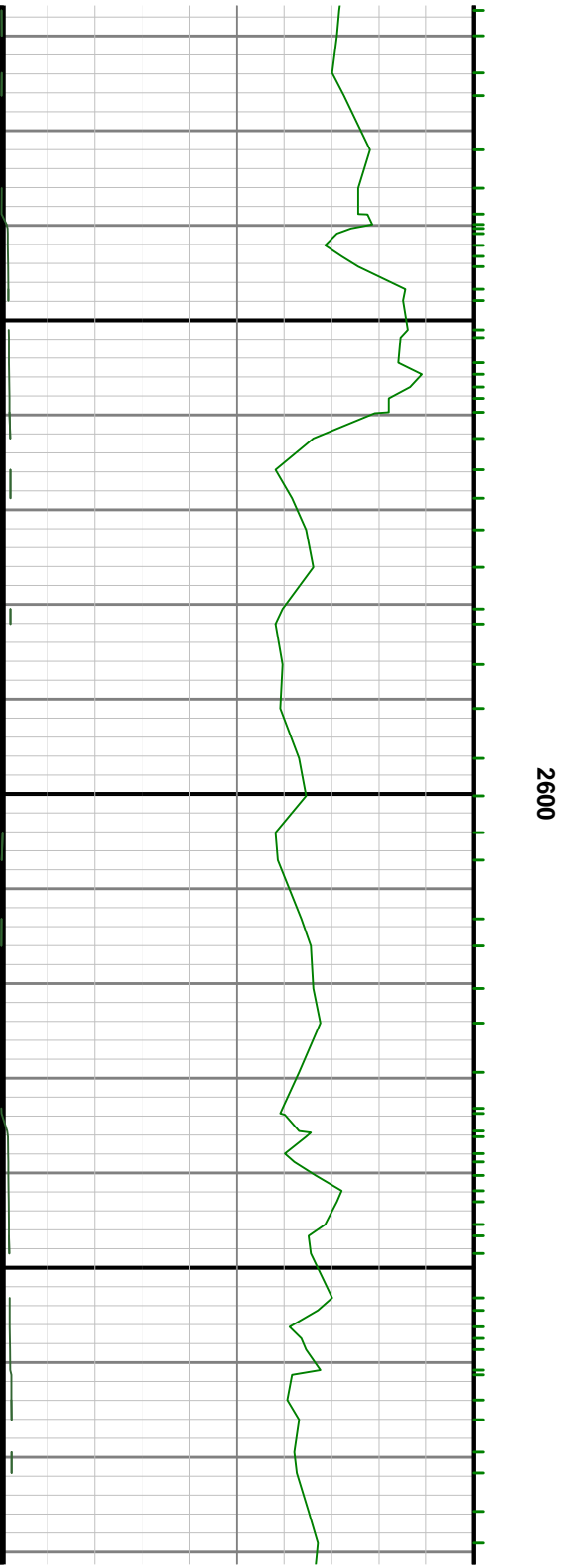
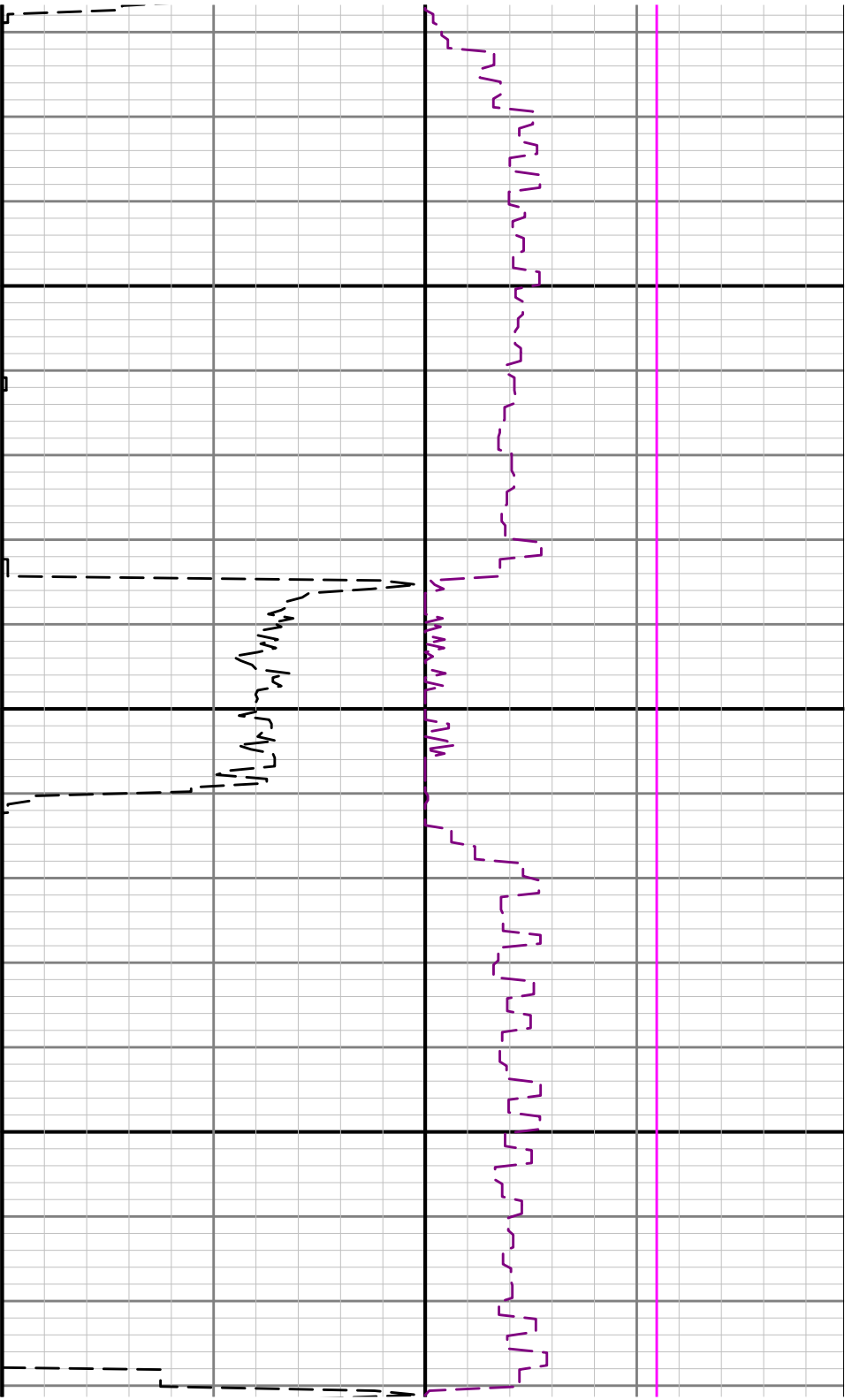


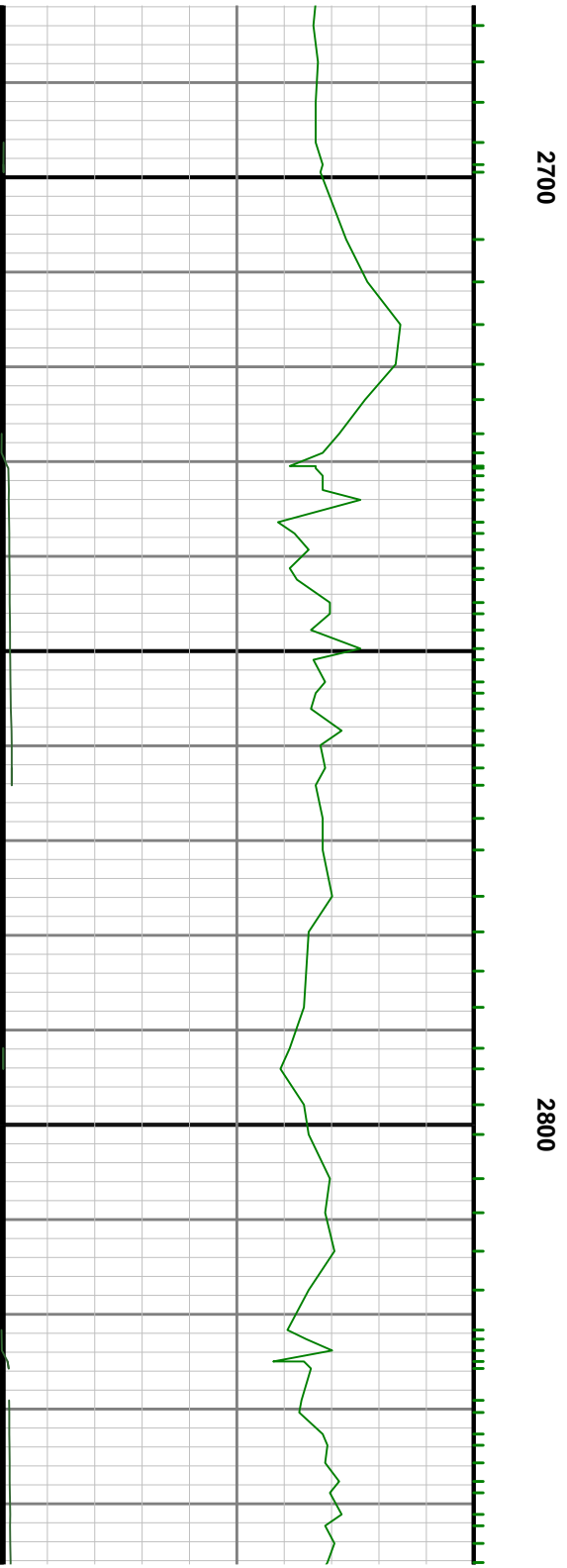
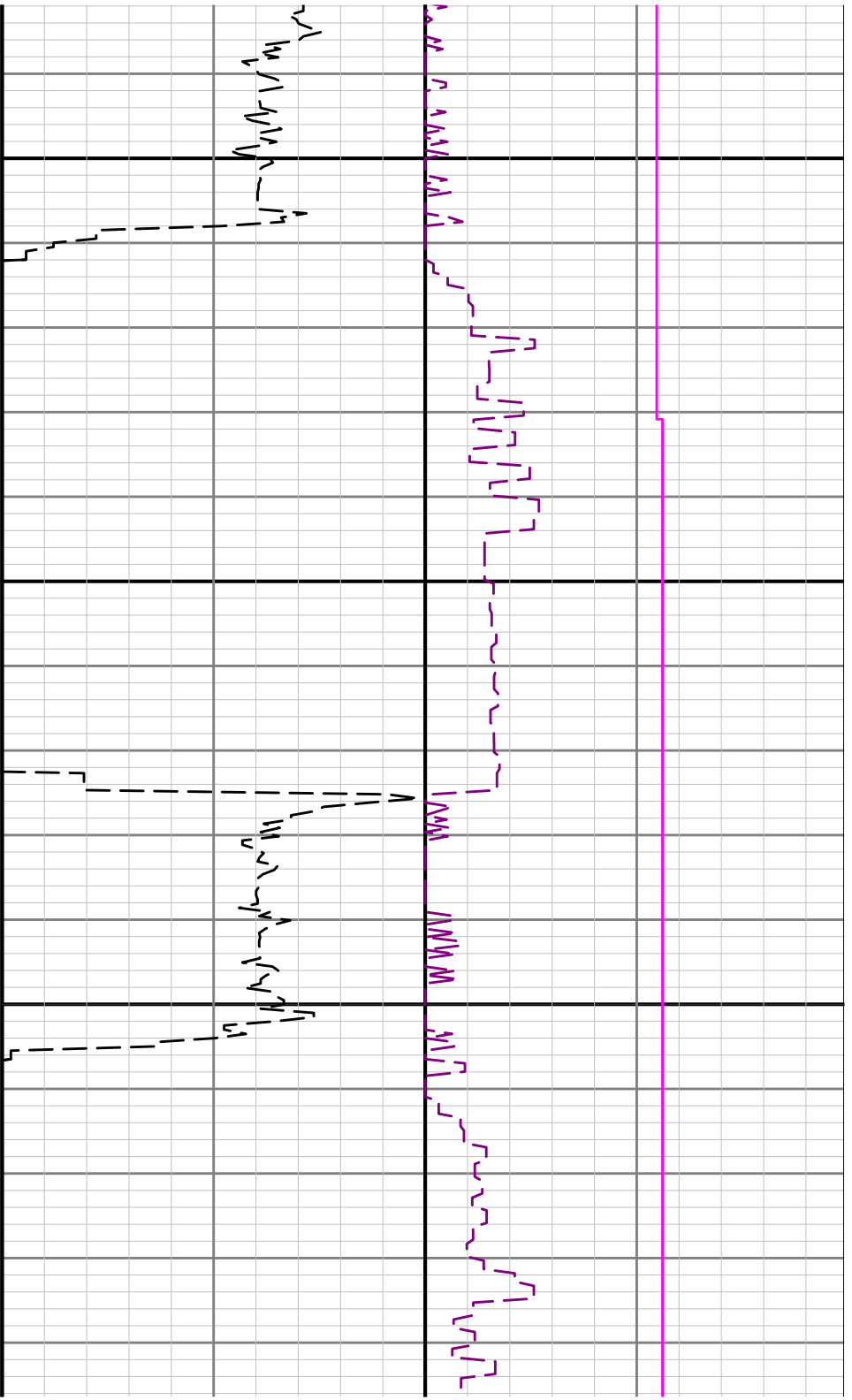


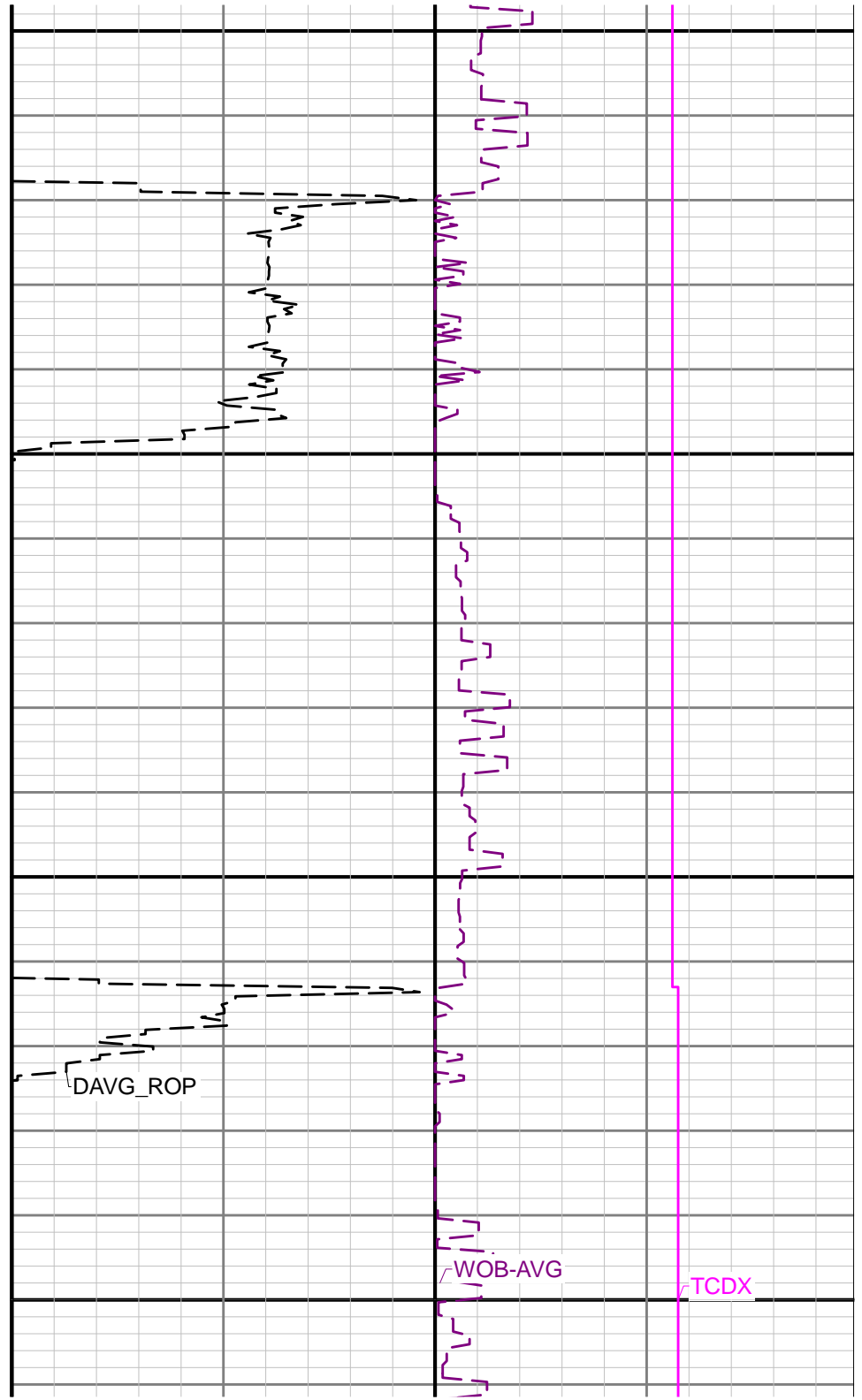
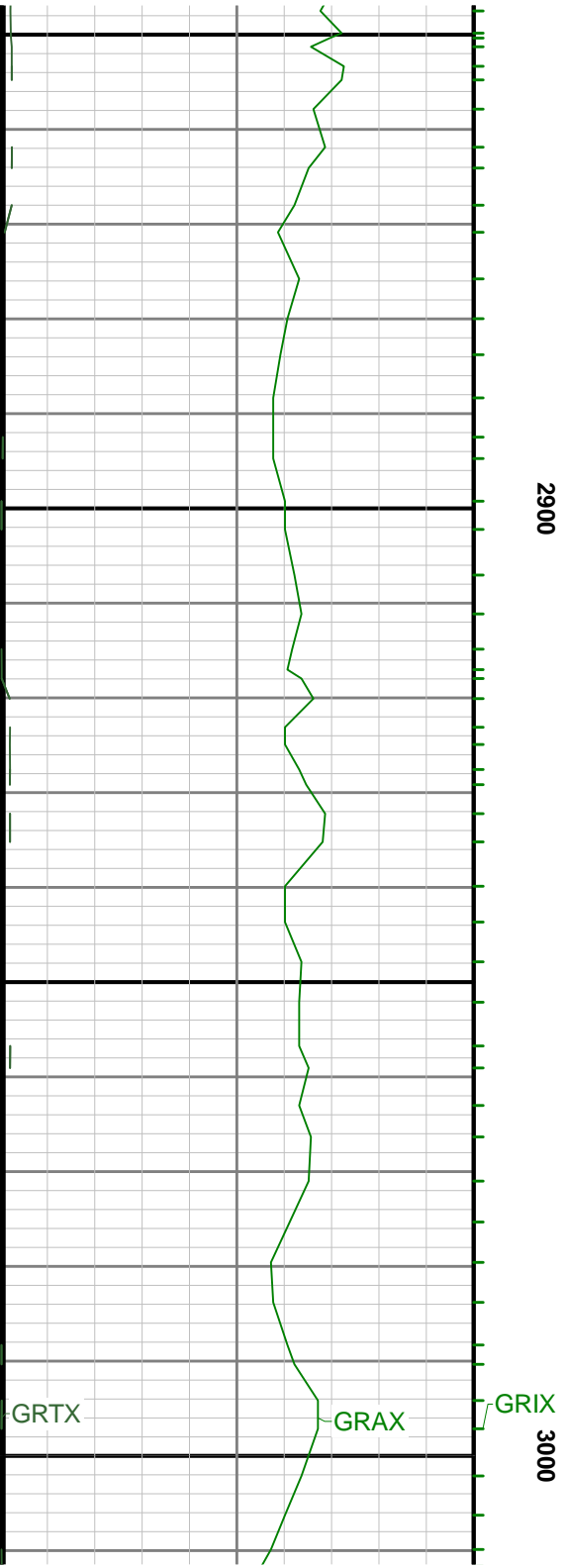


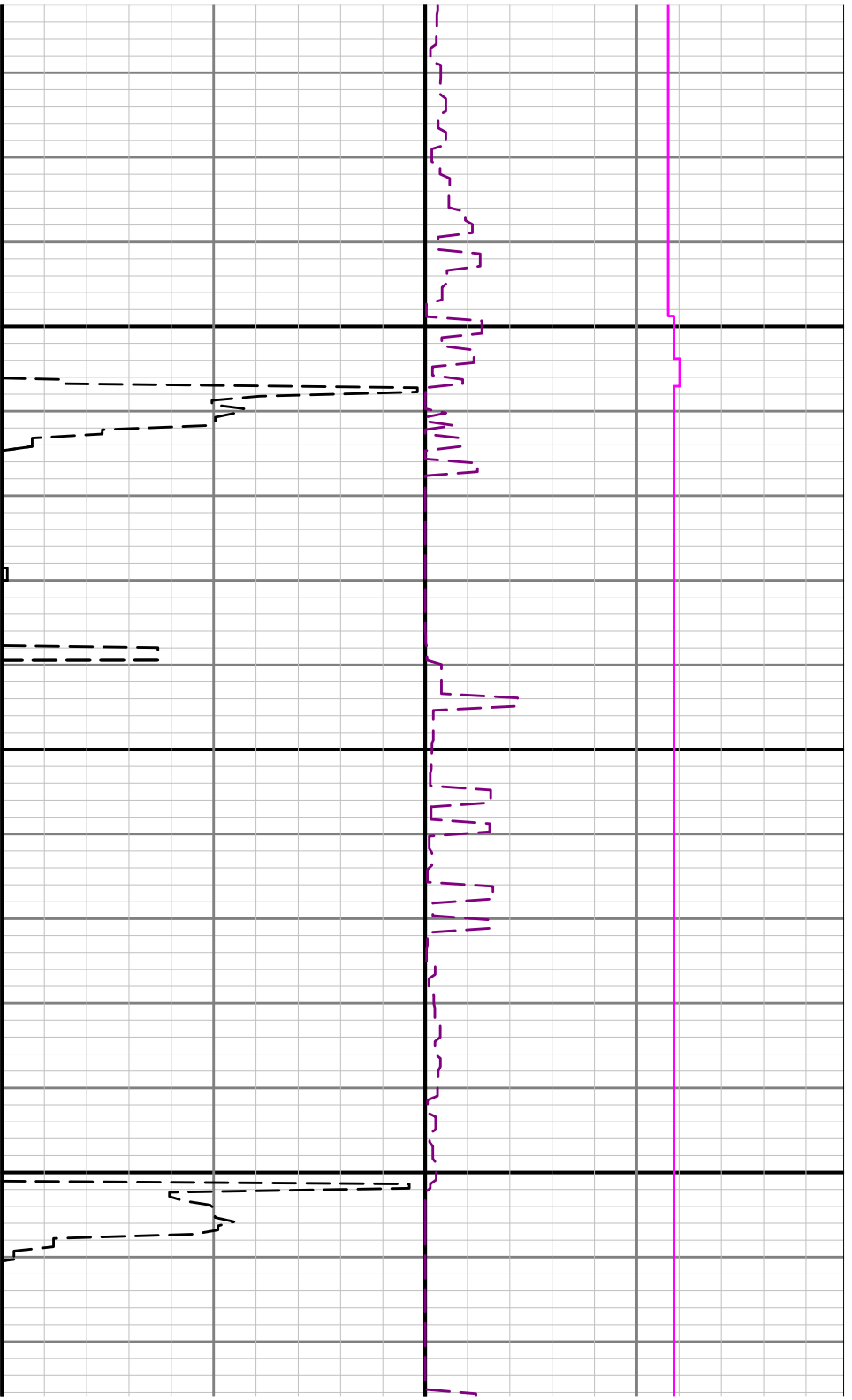


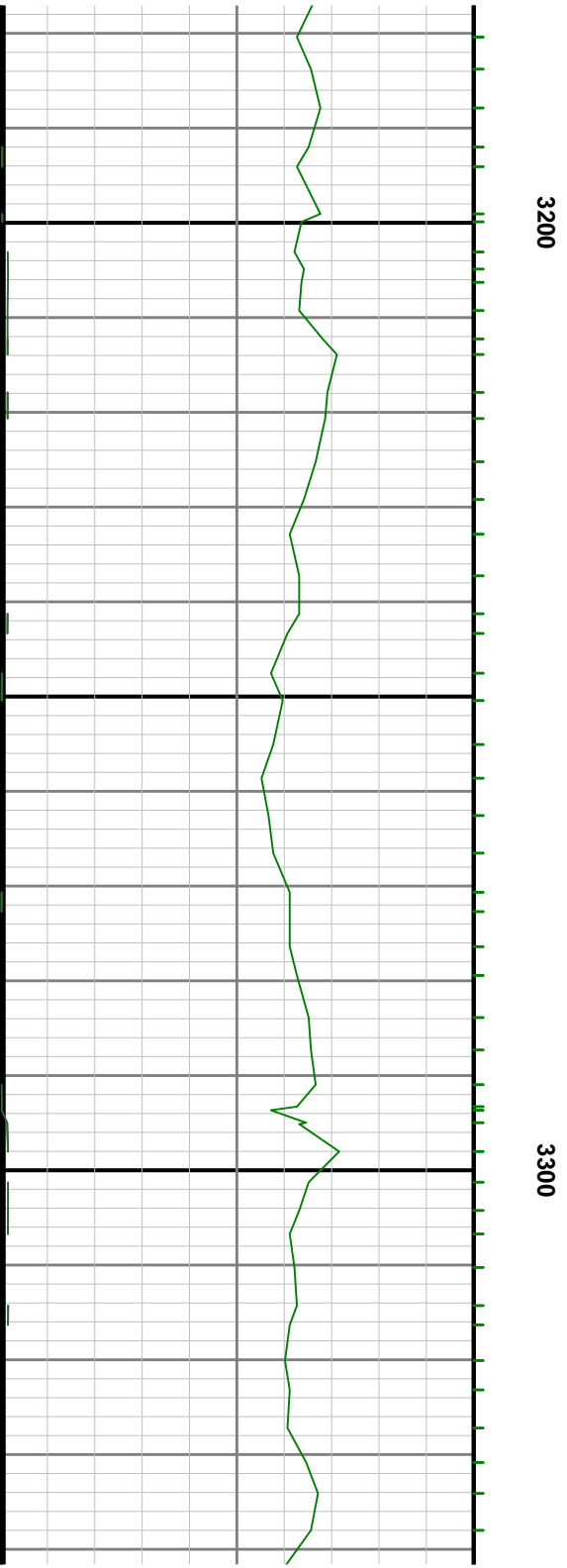
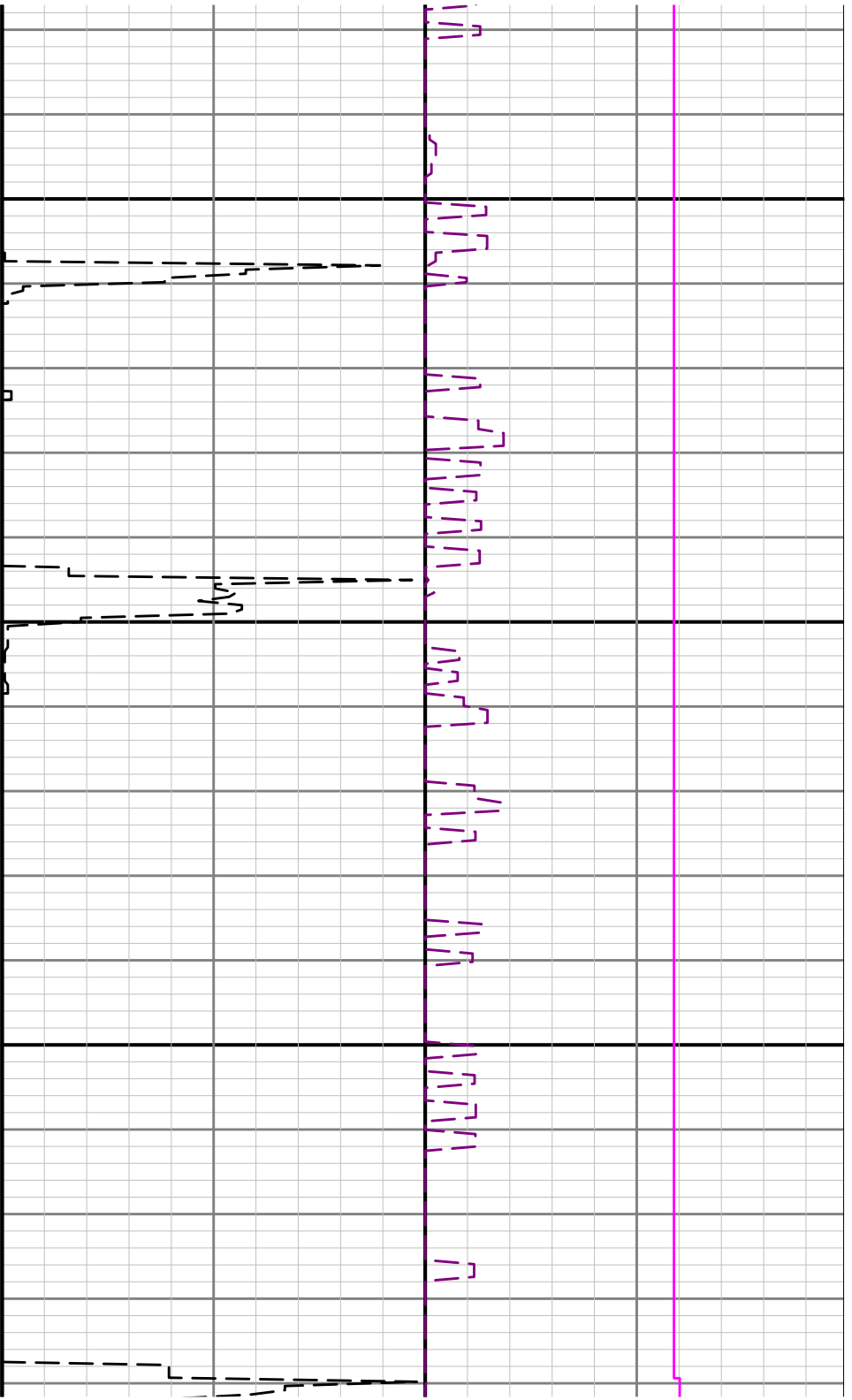


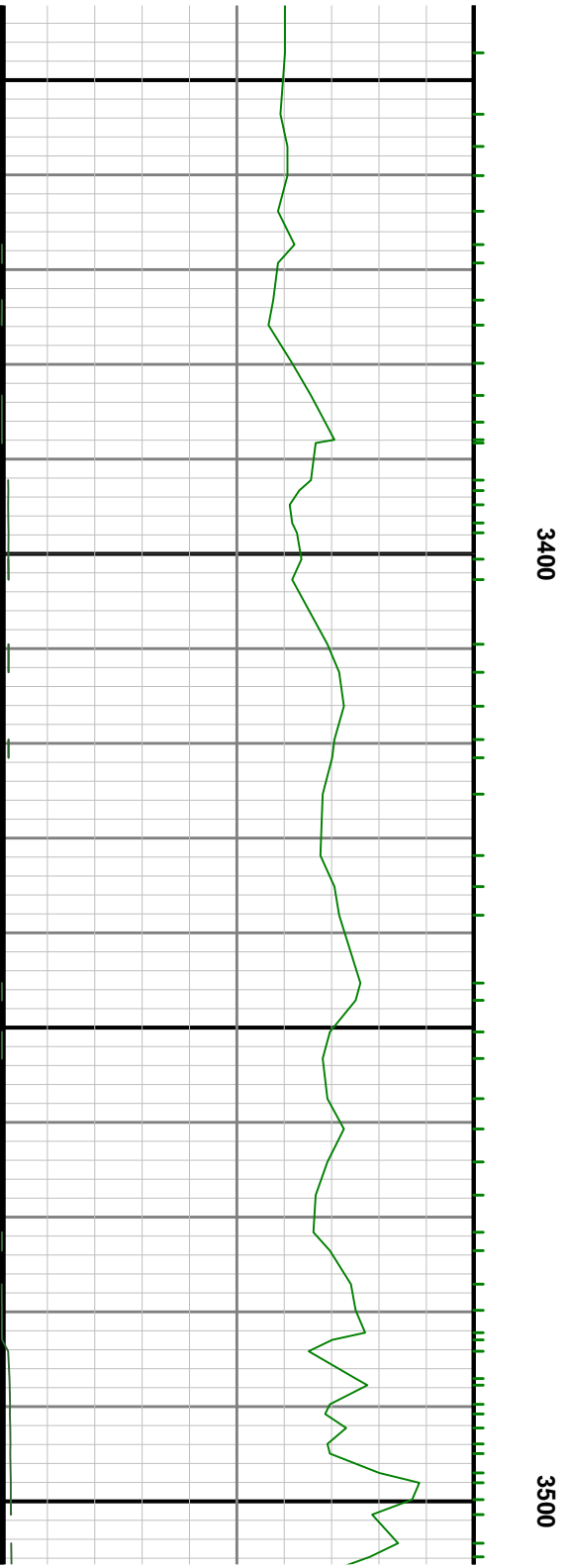
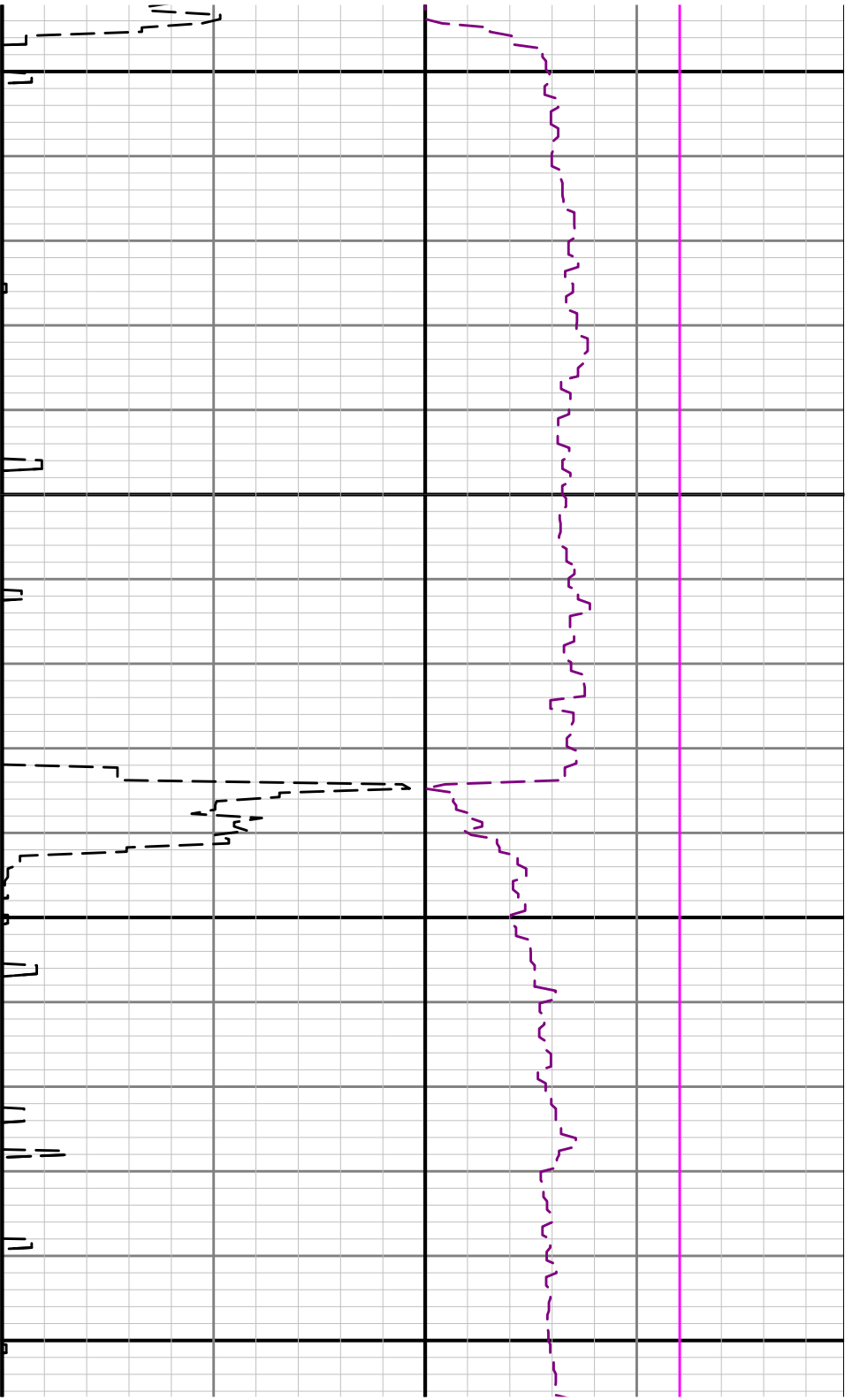


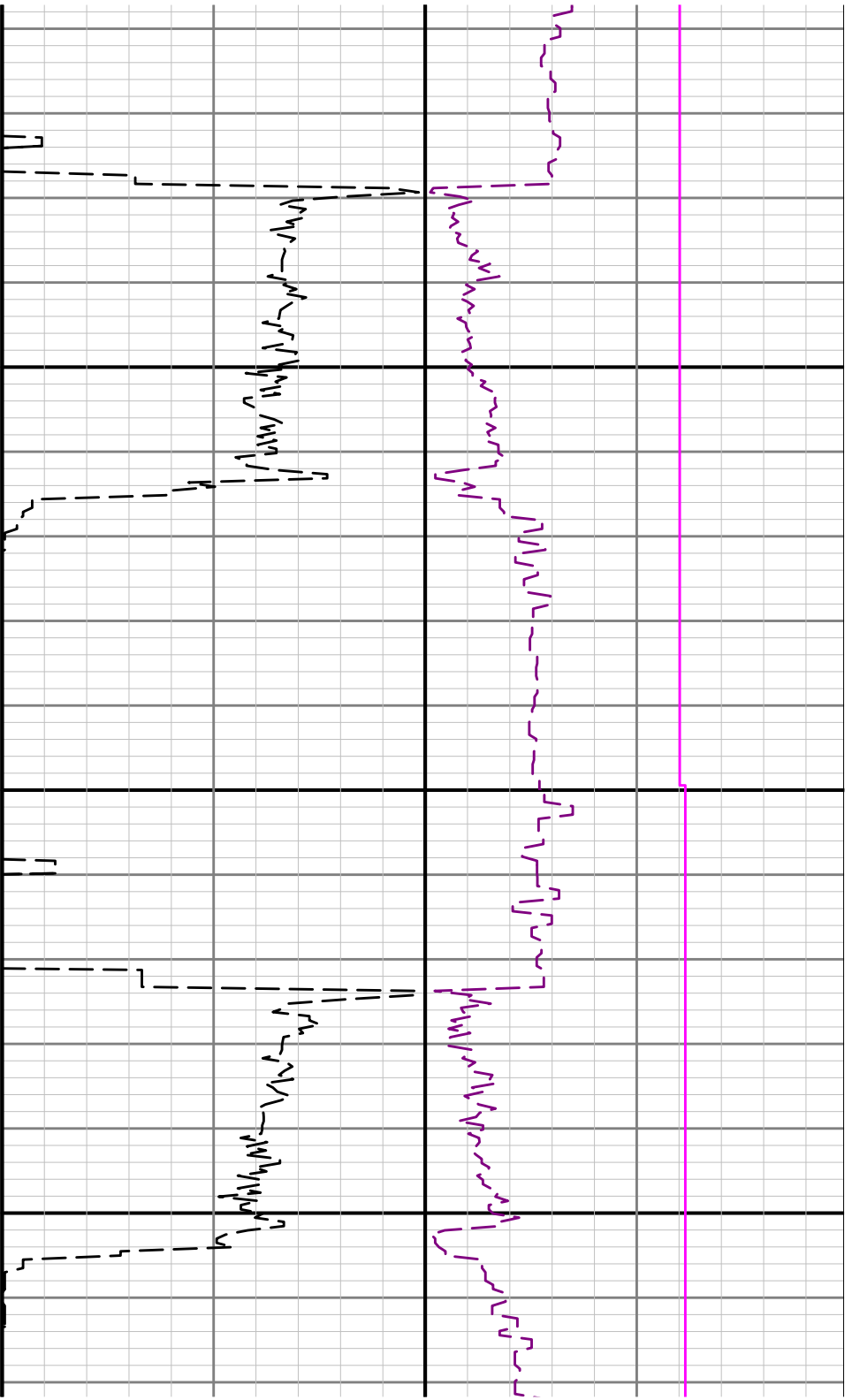




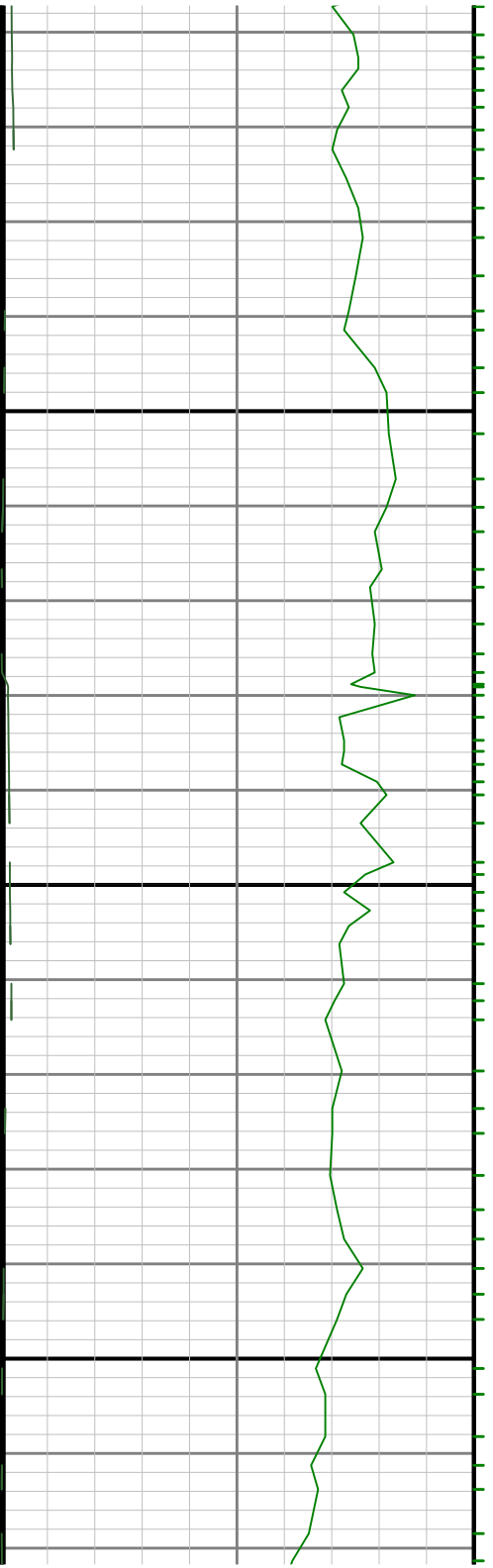


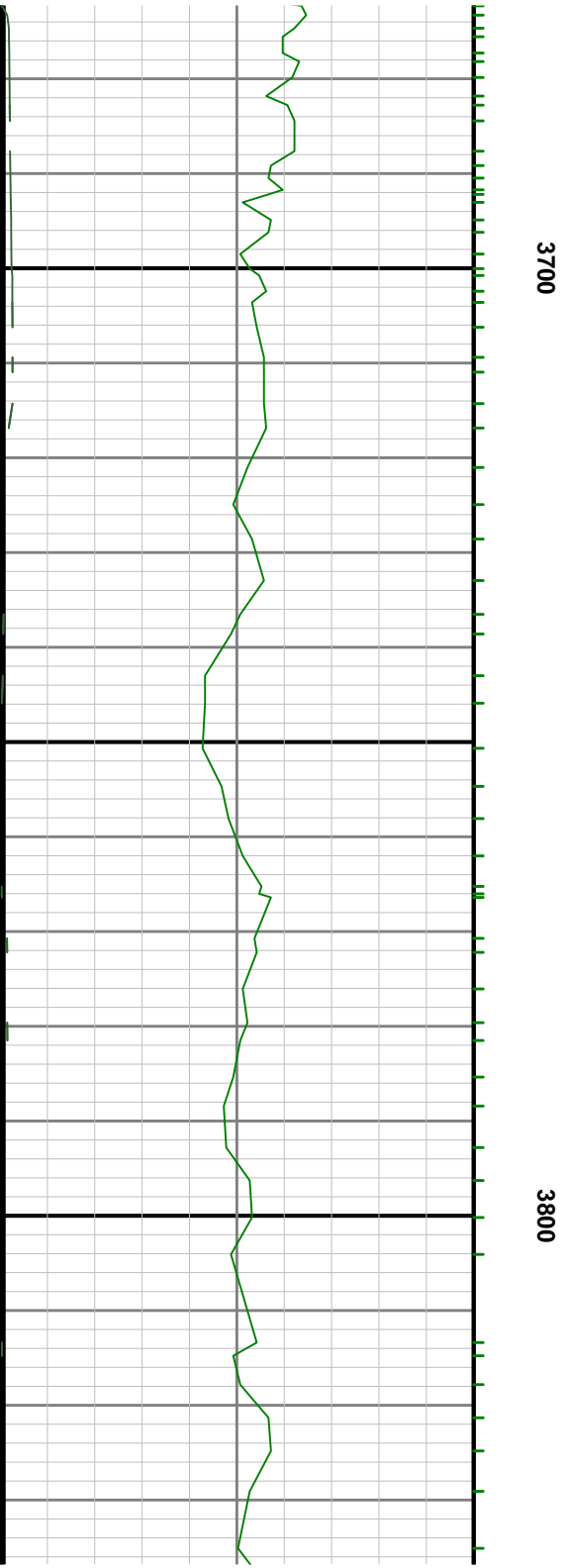
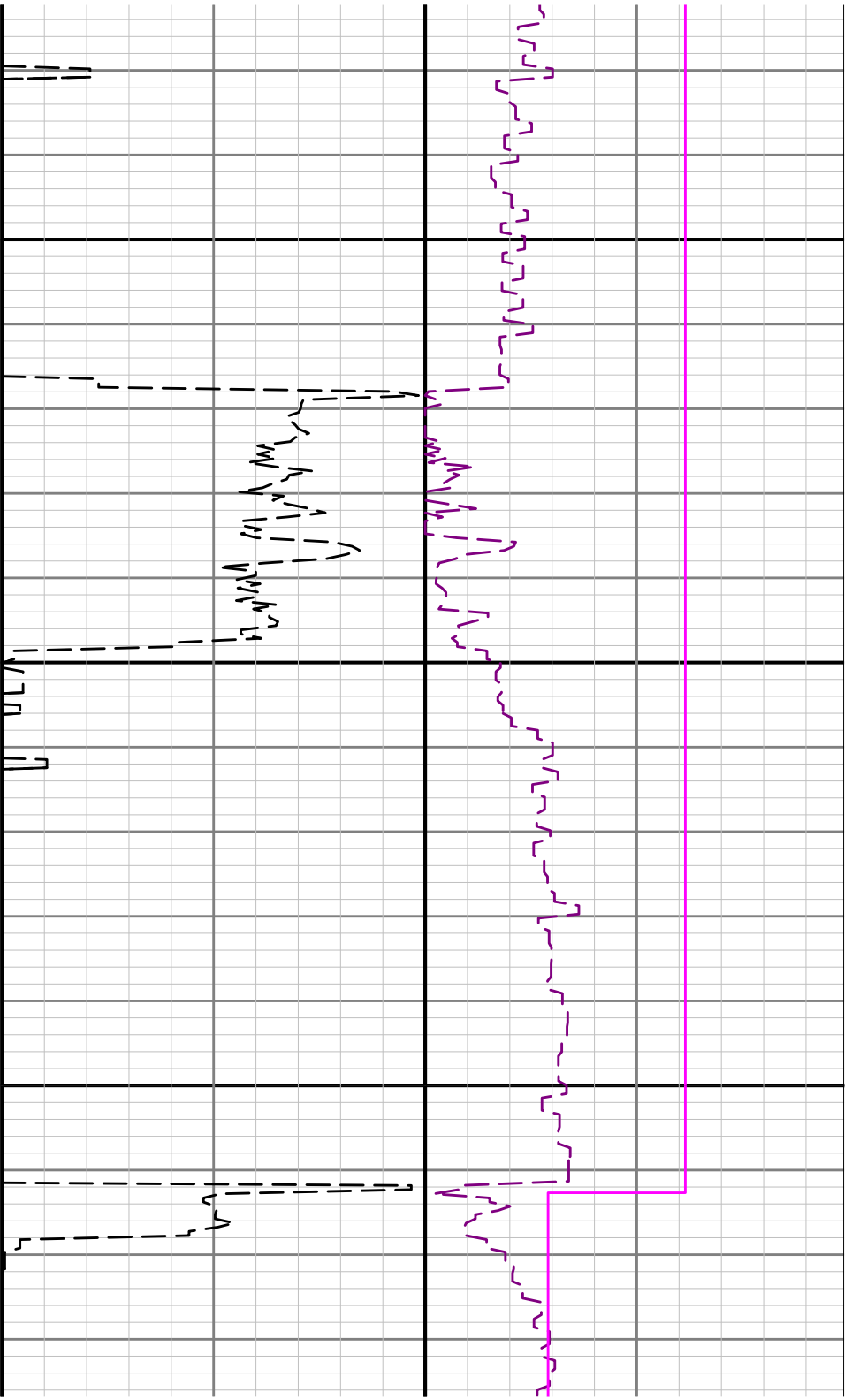


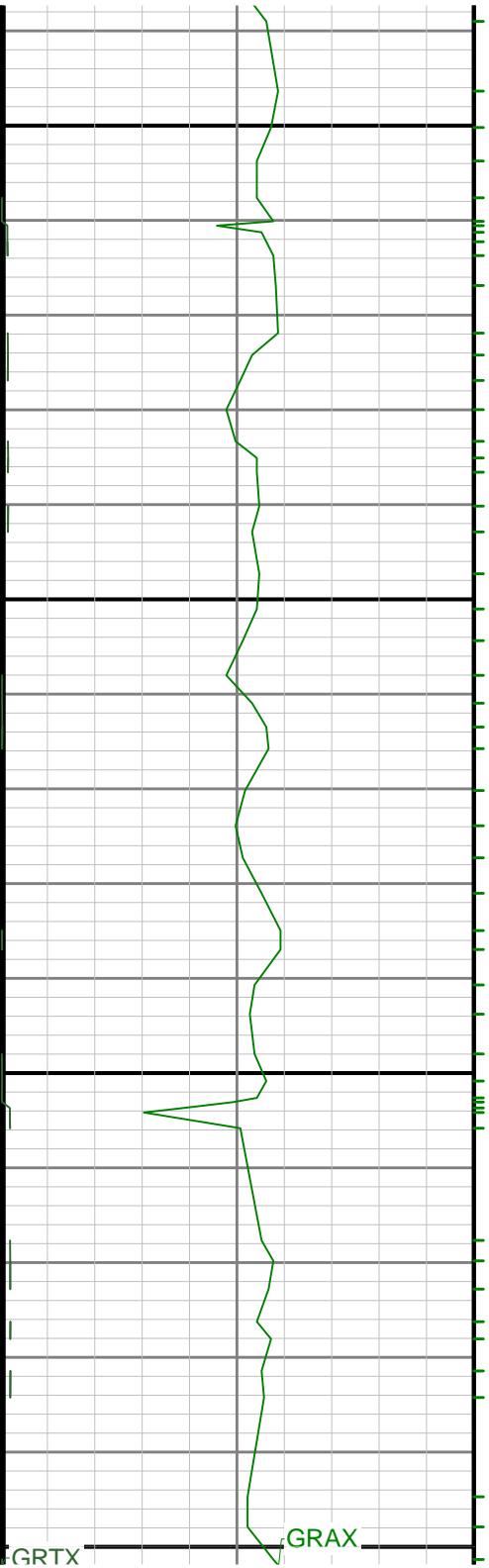




3600

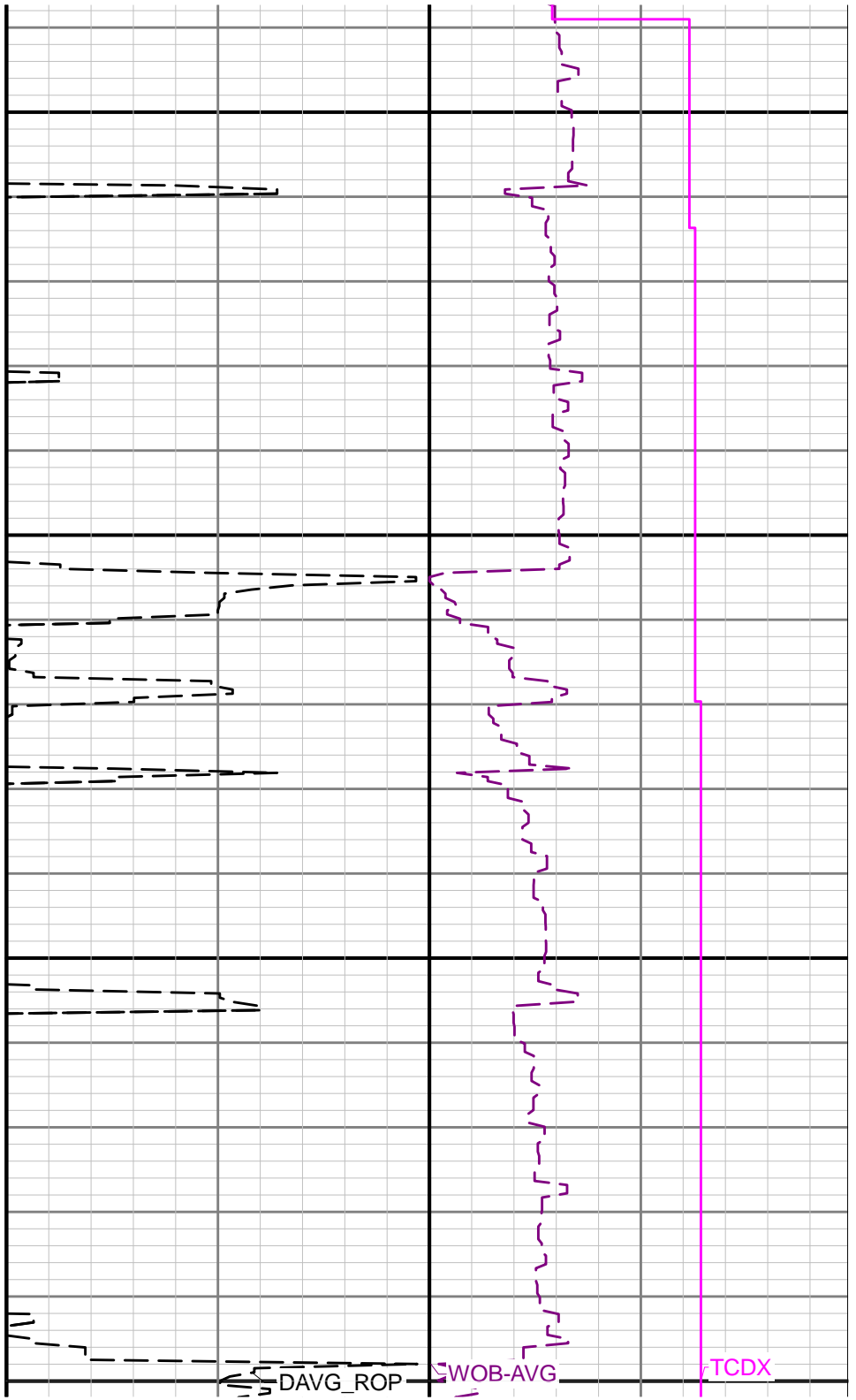


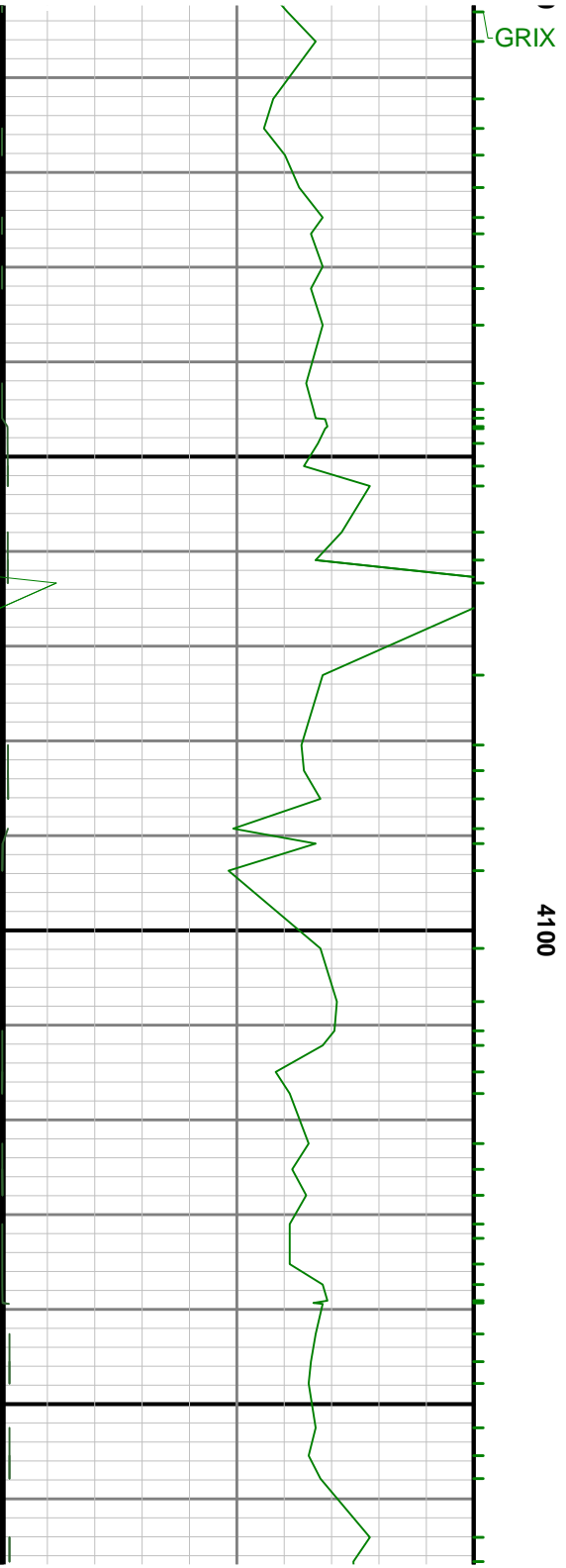
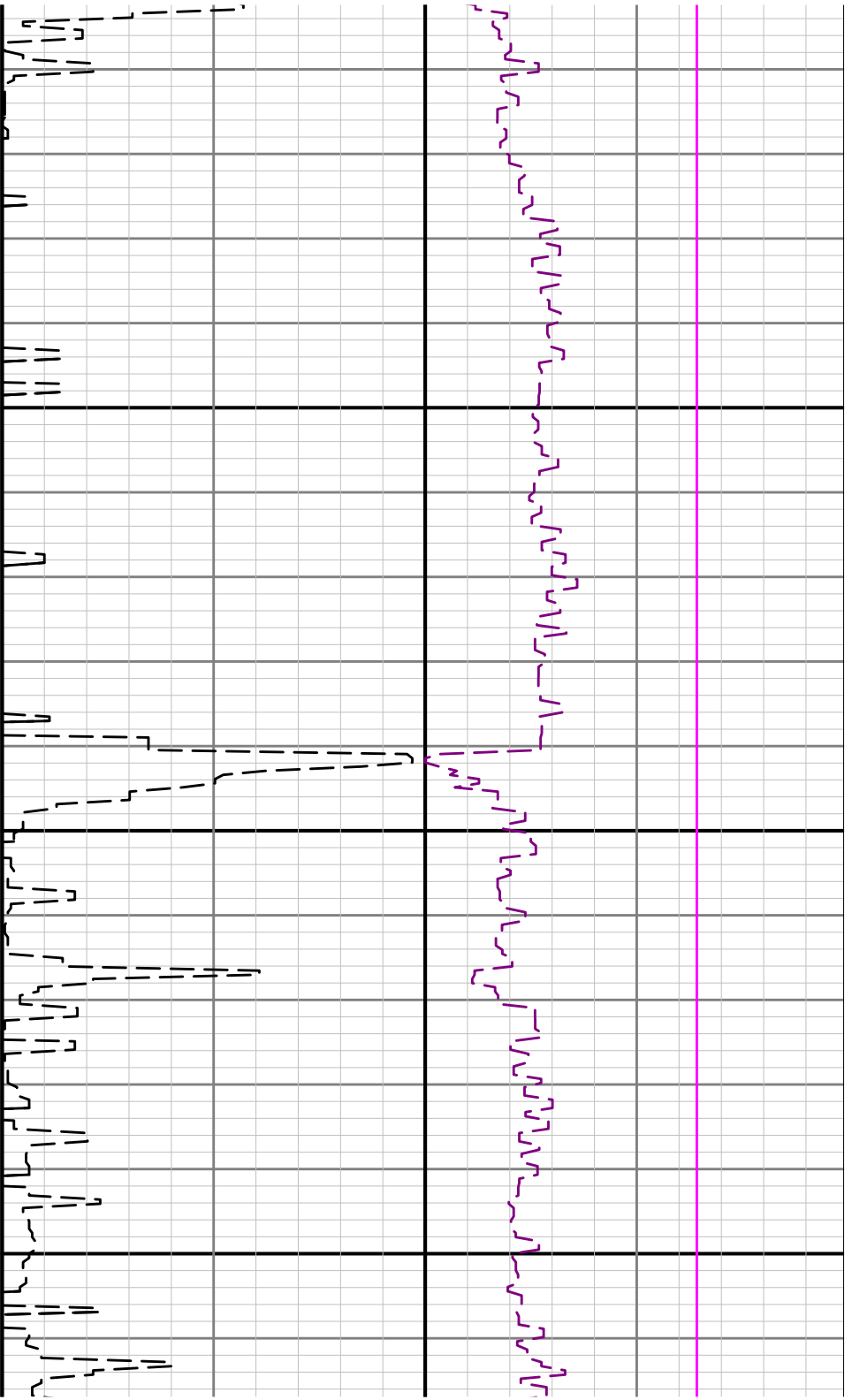


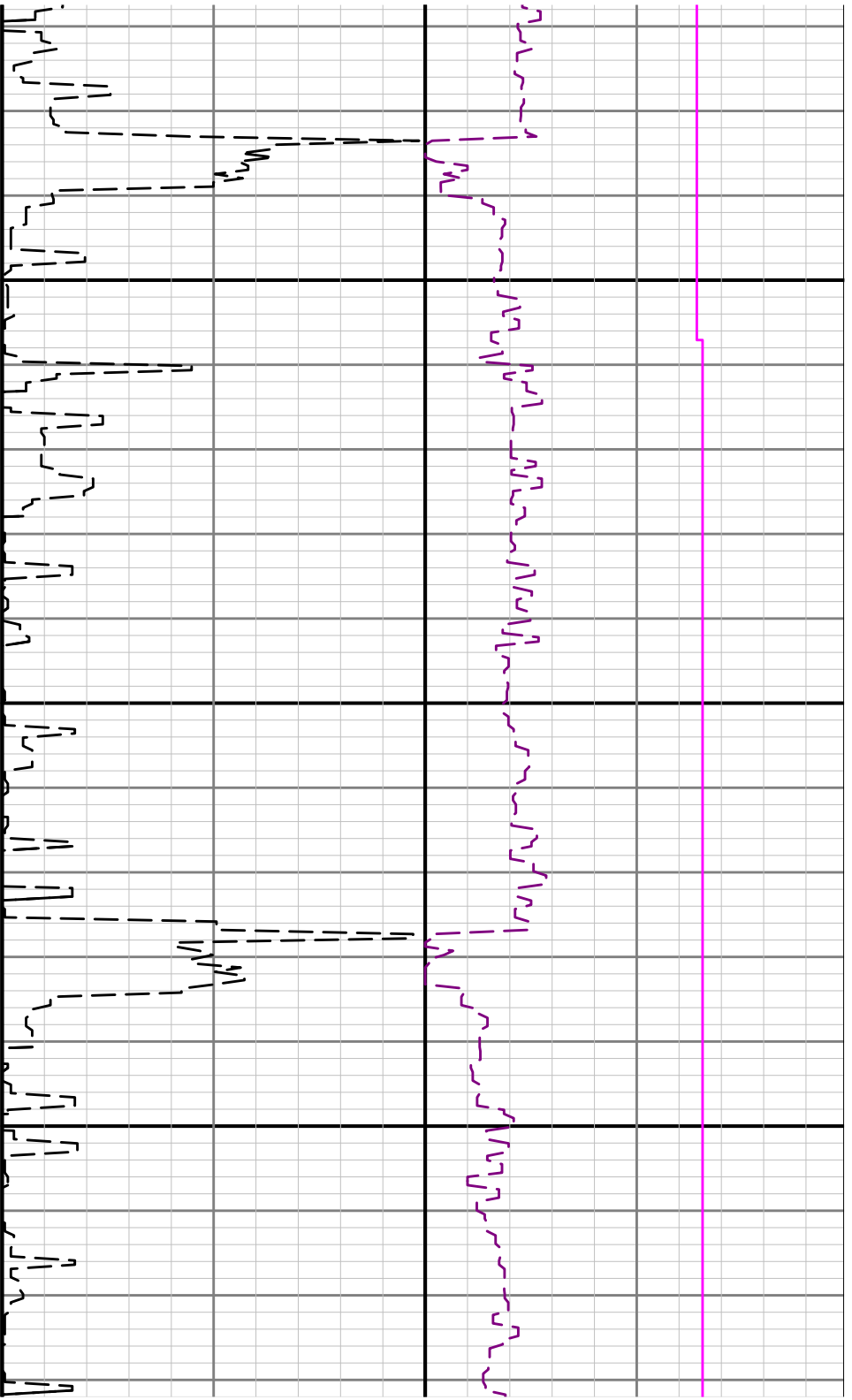


3900

4000



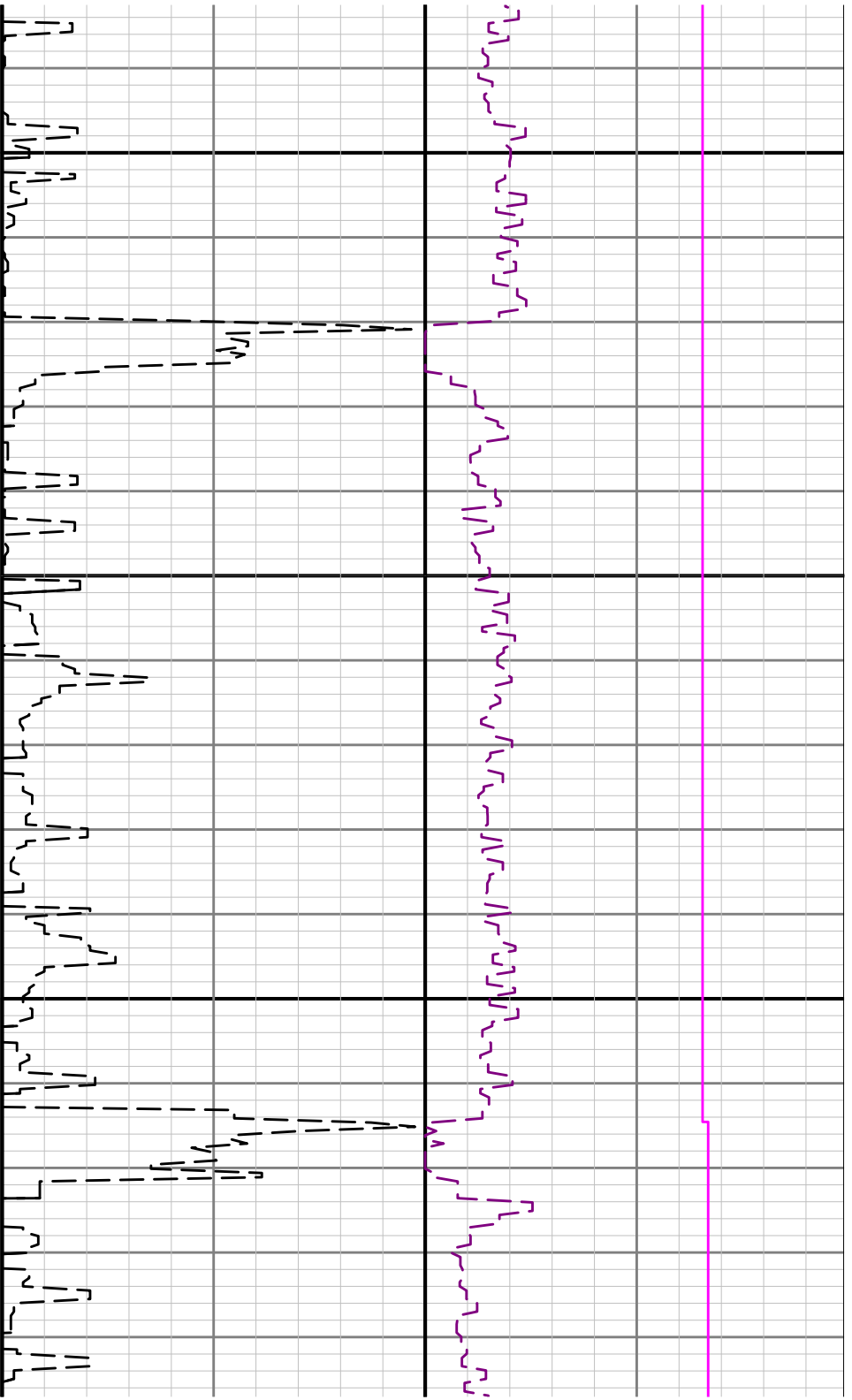




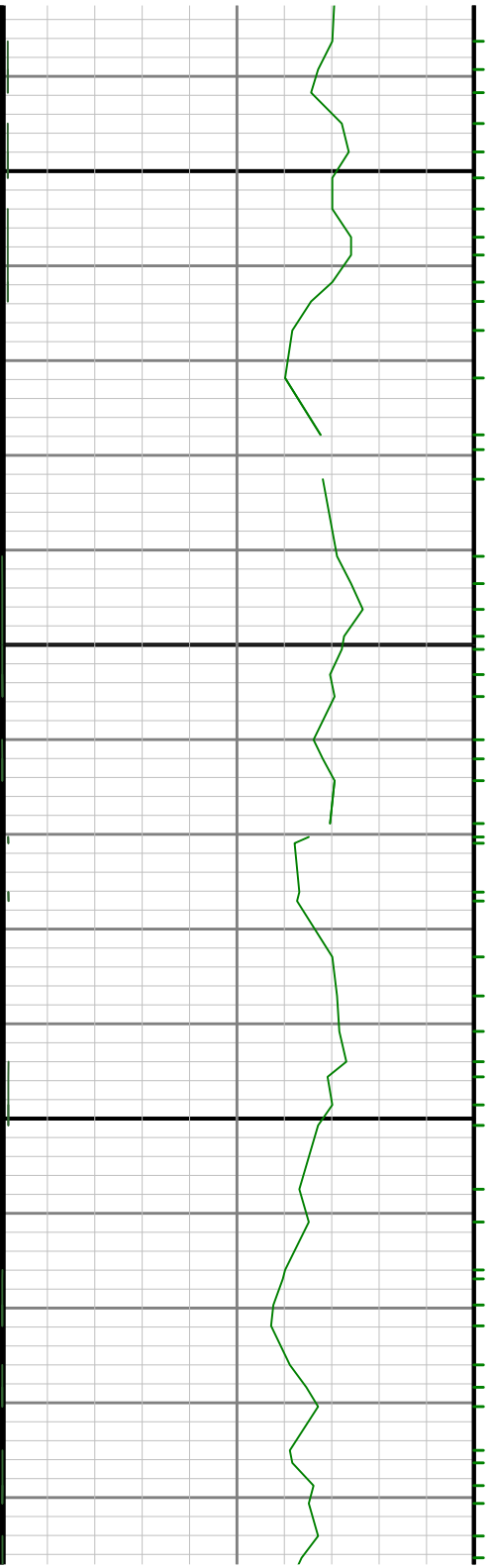
4200

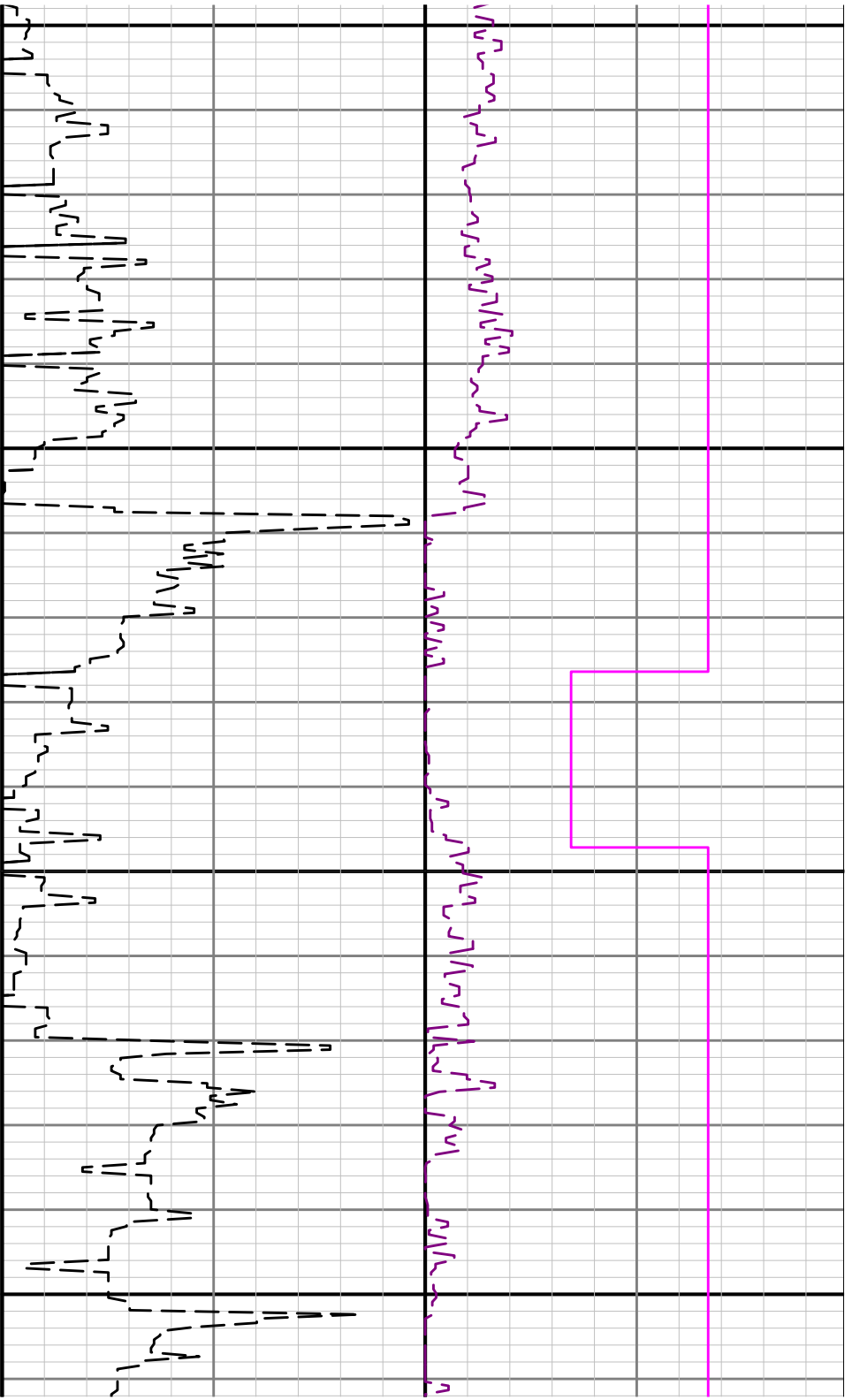
4300





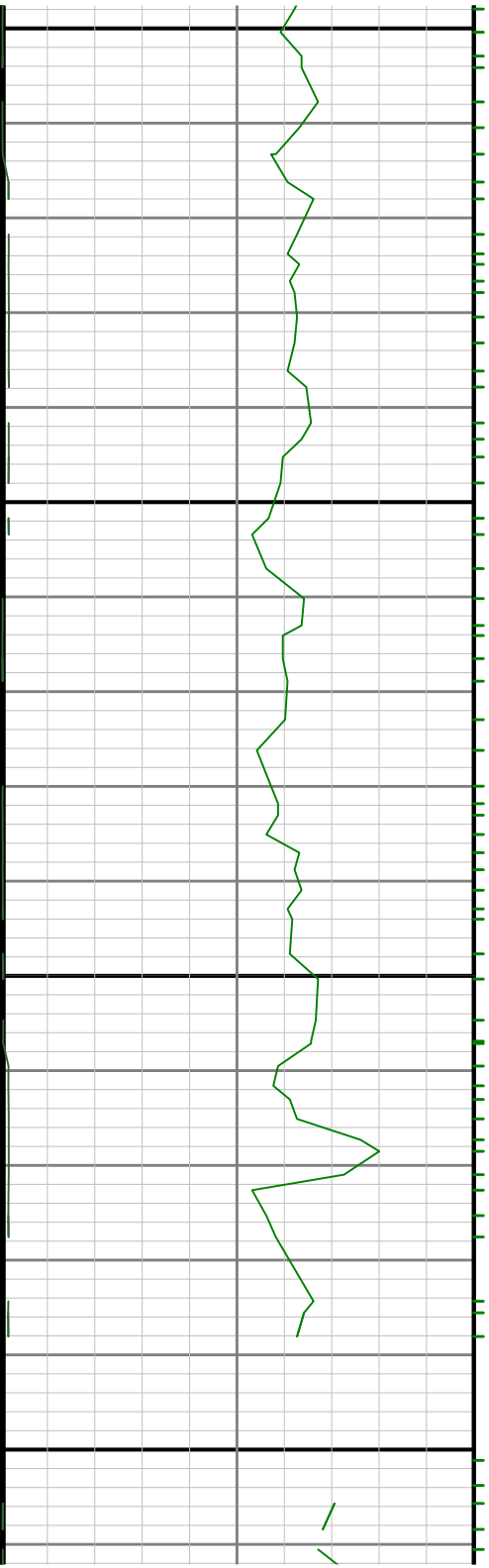
4400

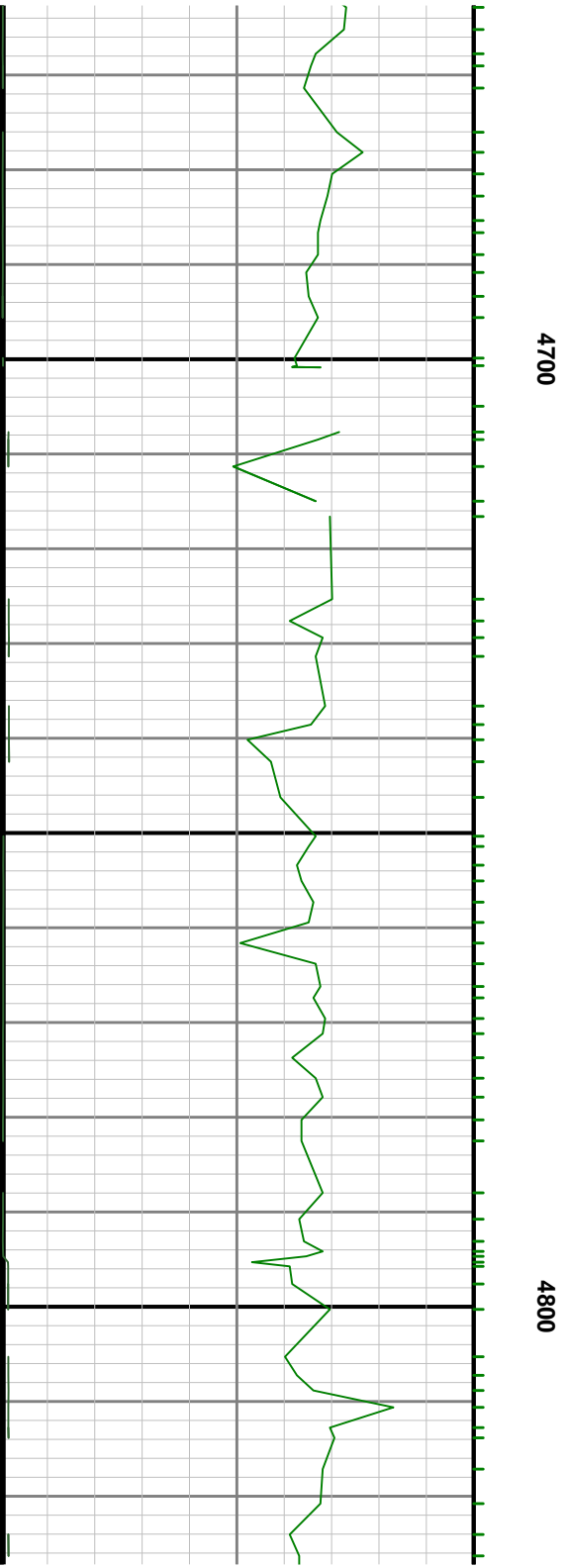
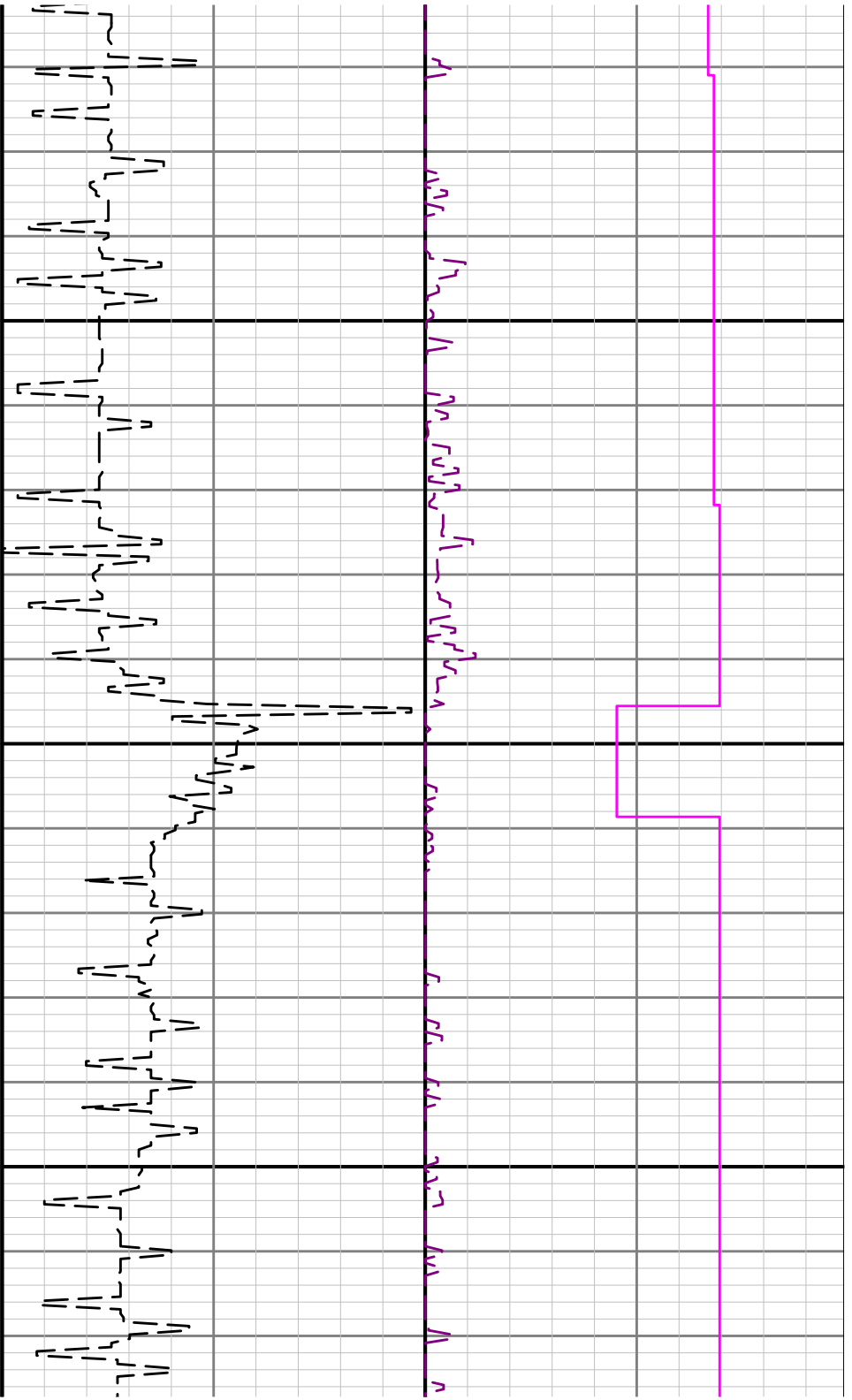


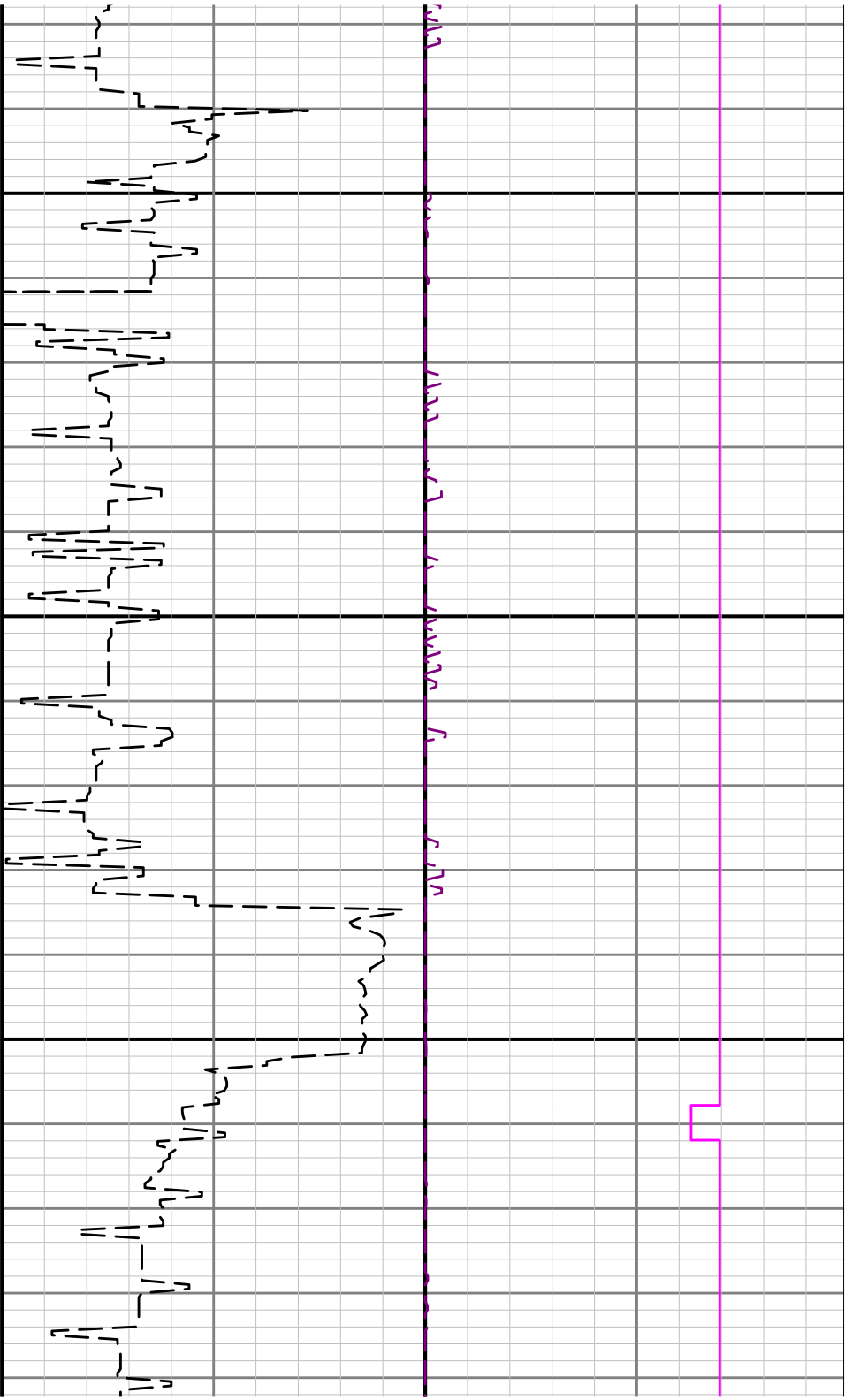


4500

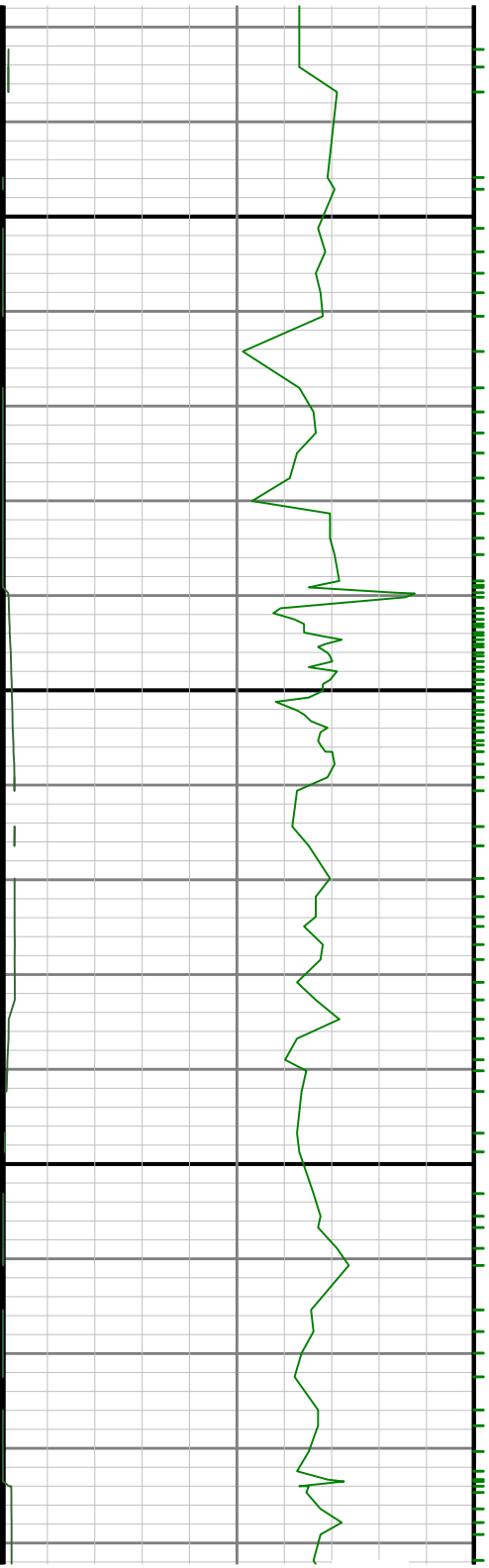
4600

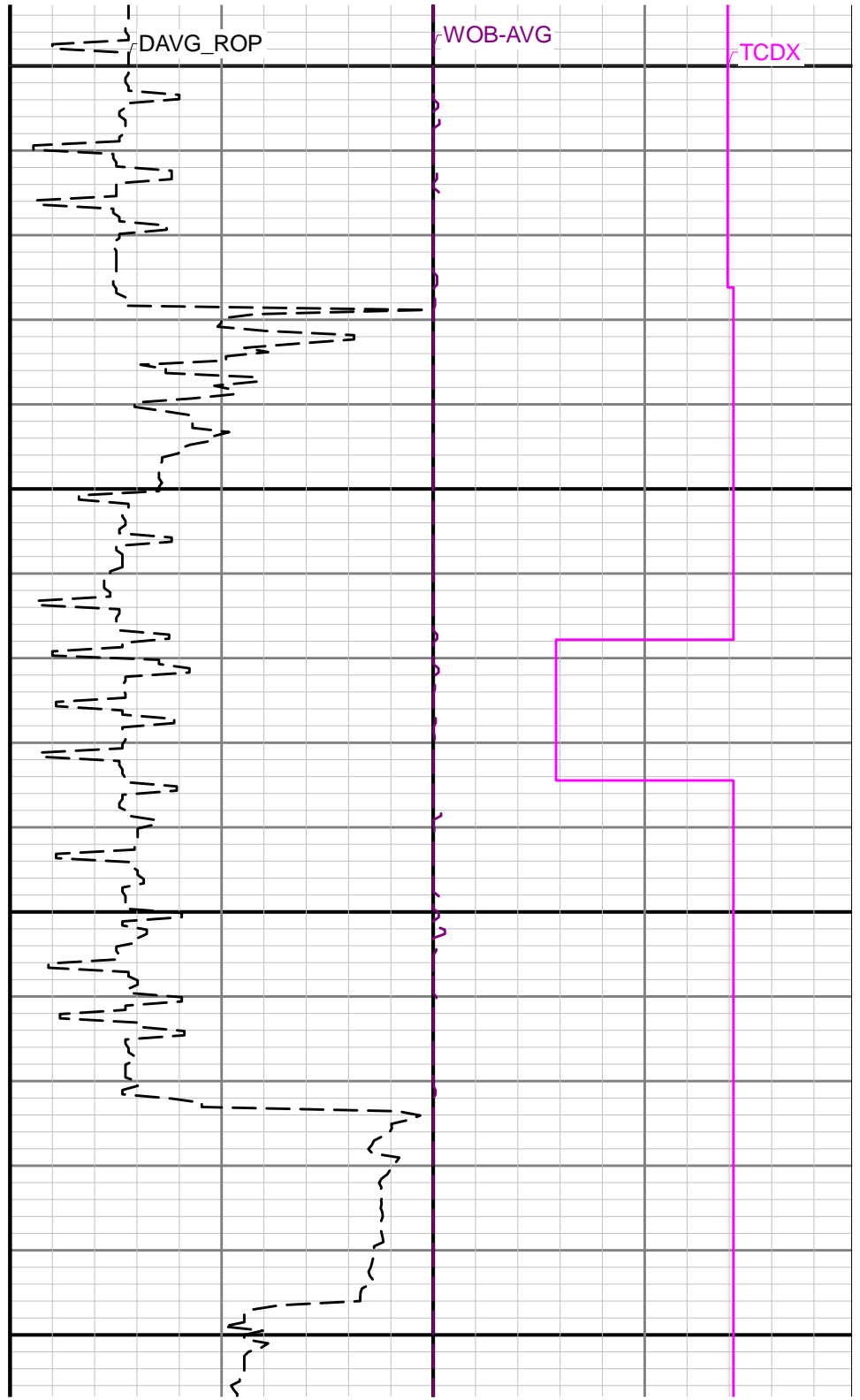
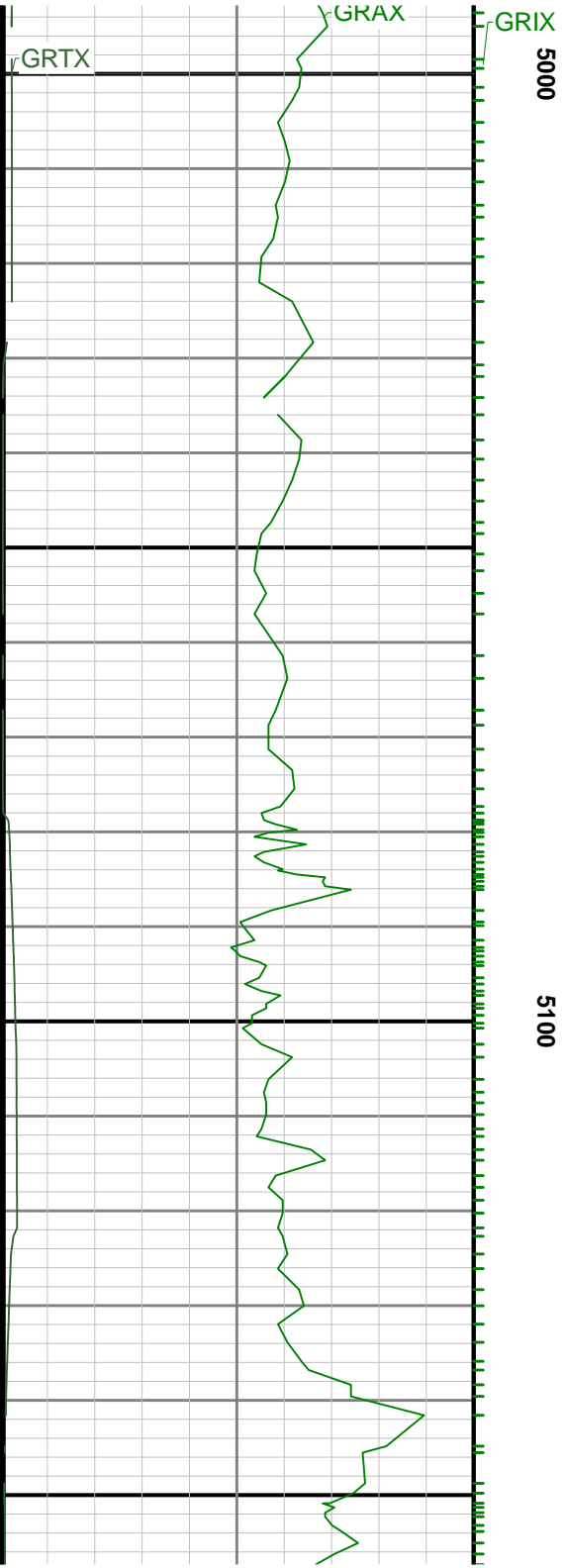


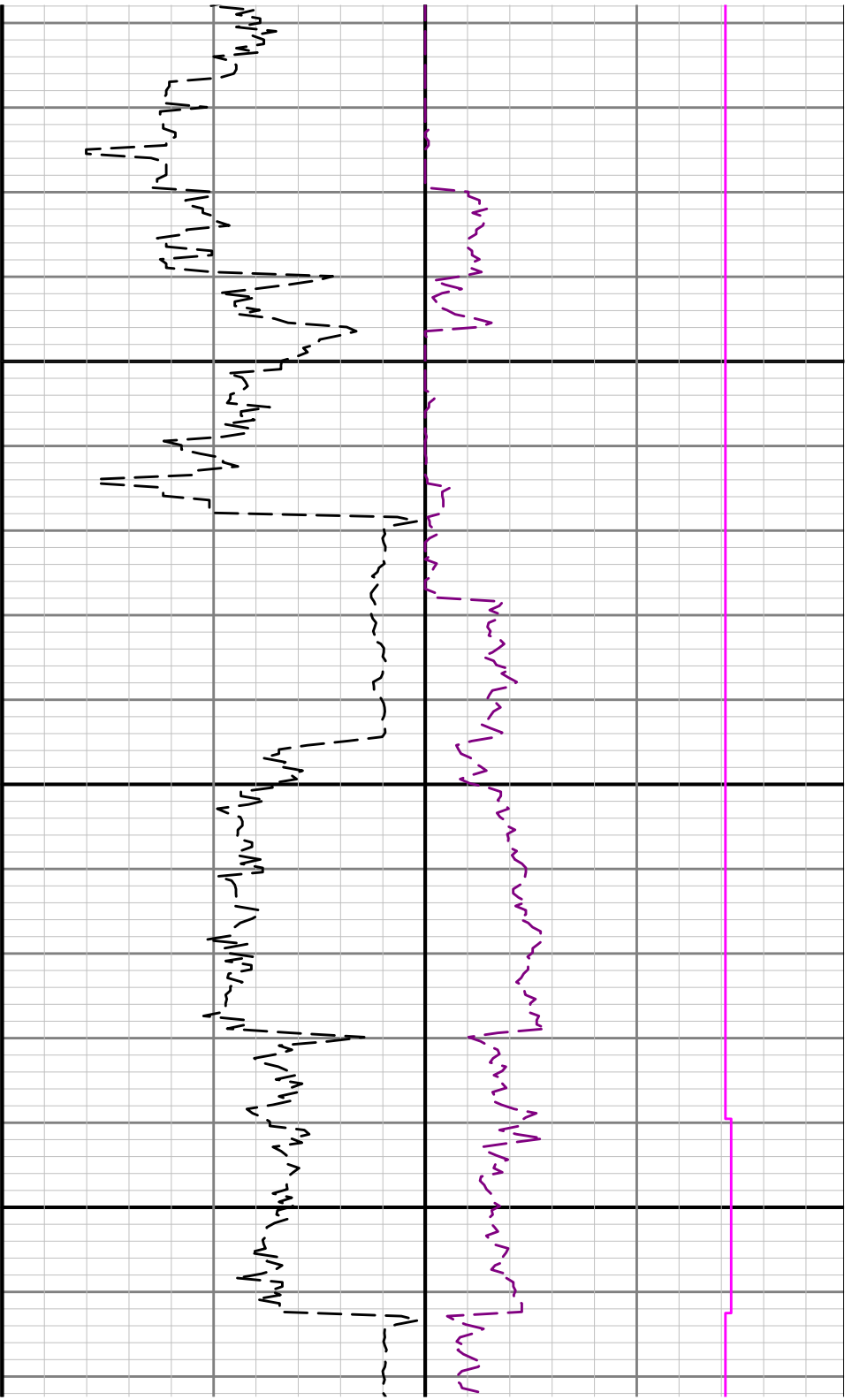




4900



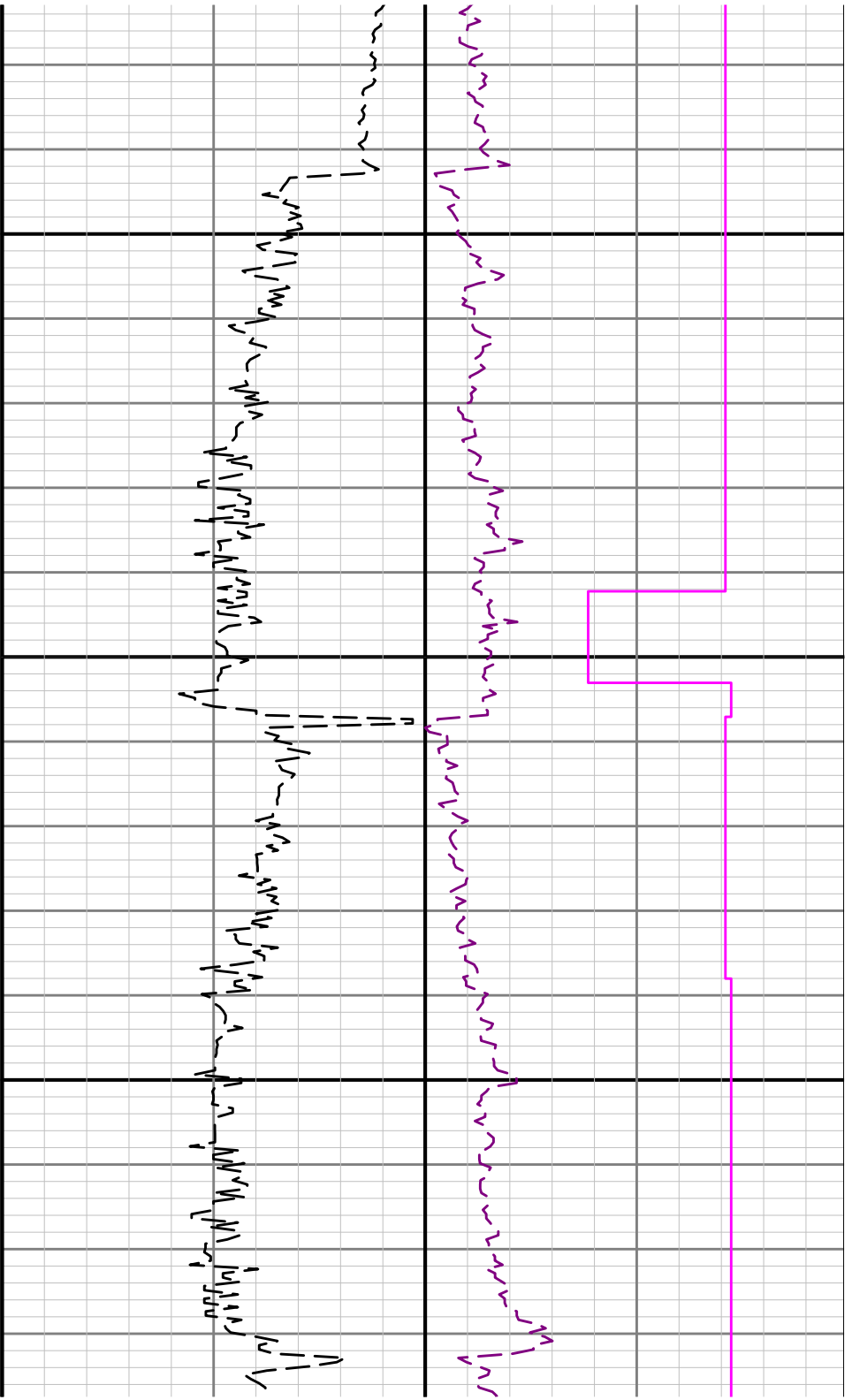




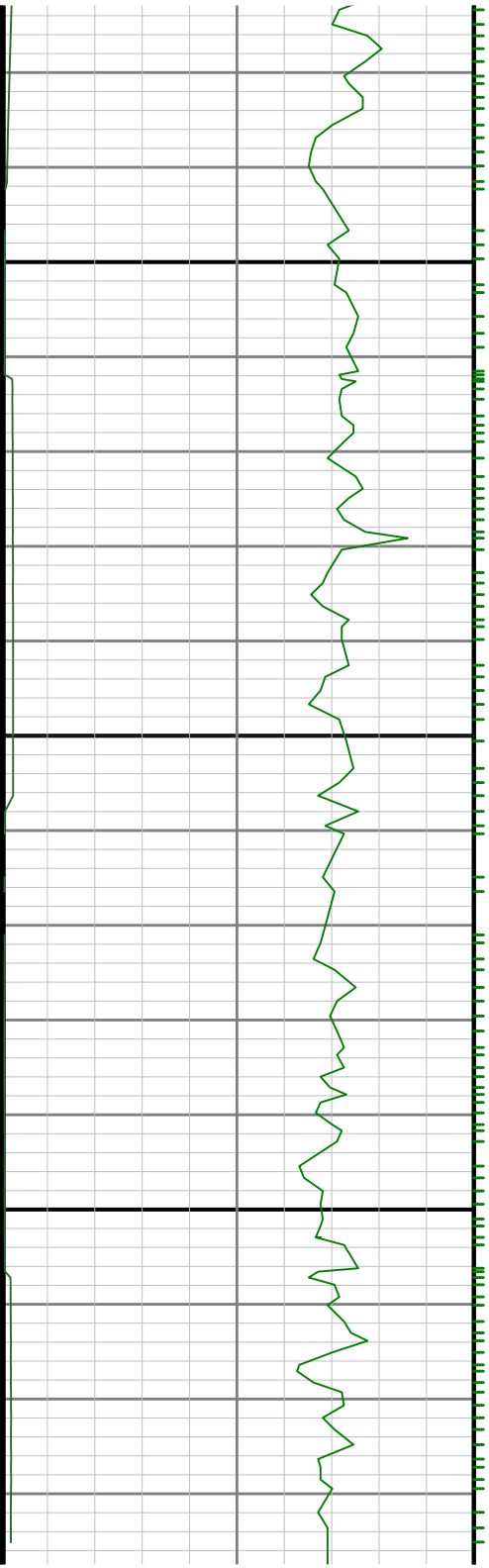
5200

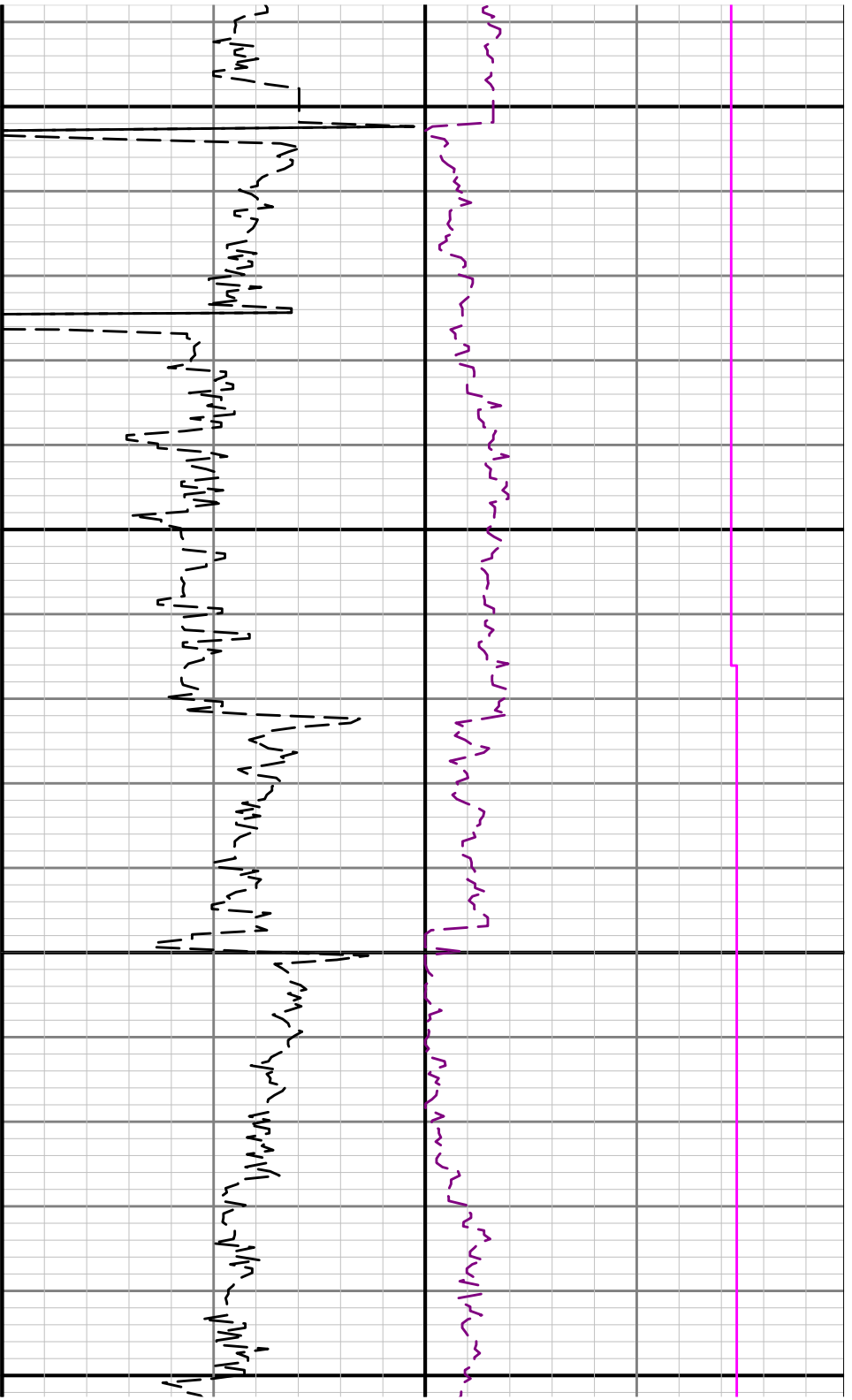
5300





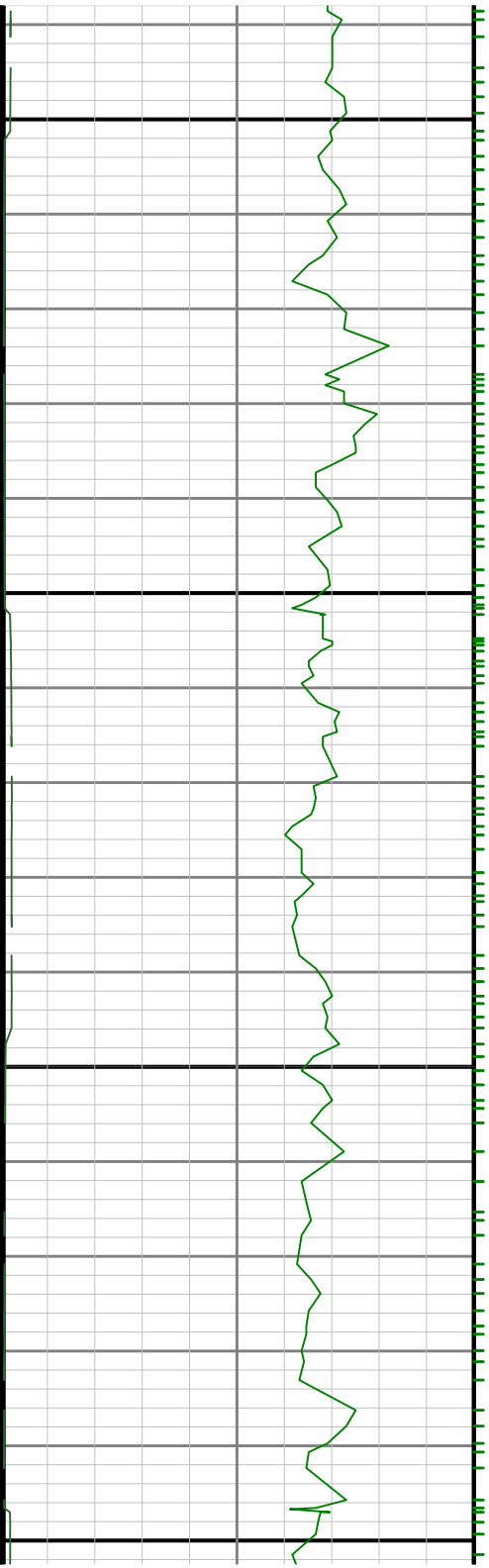
5400

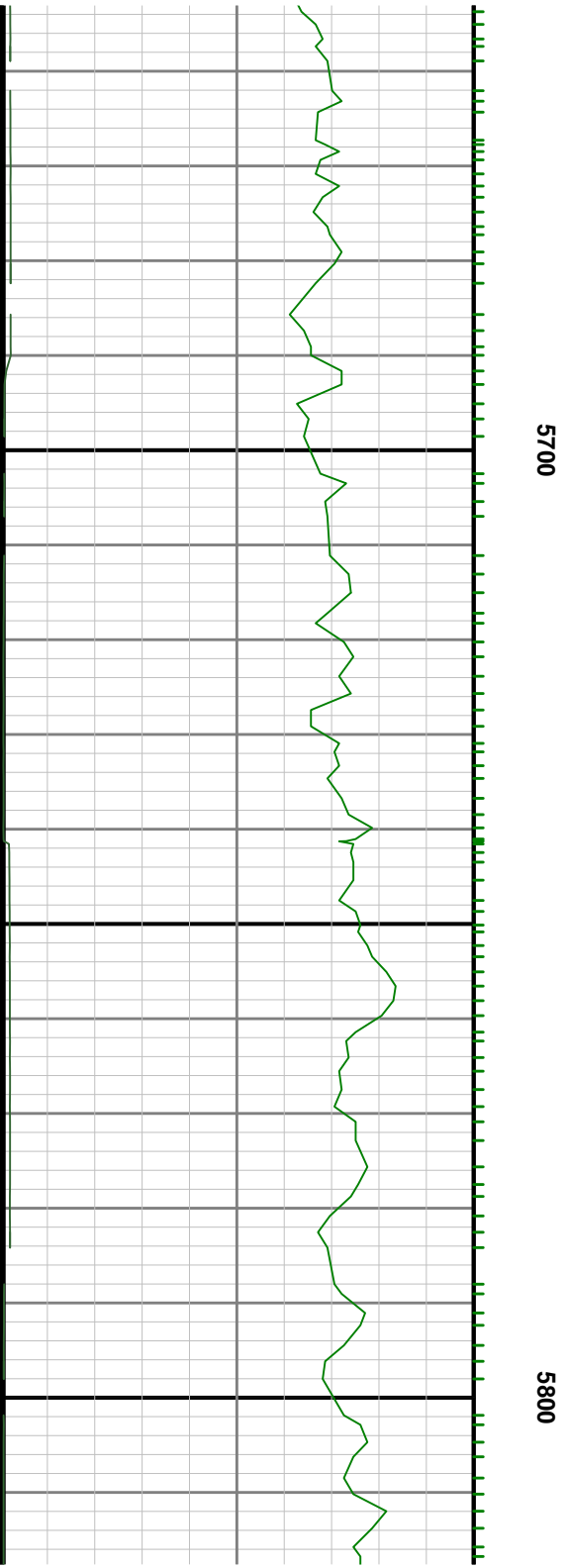
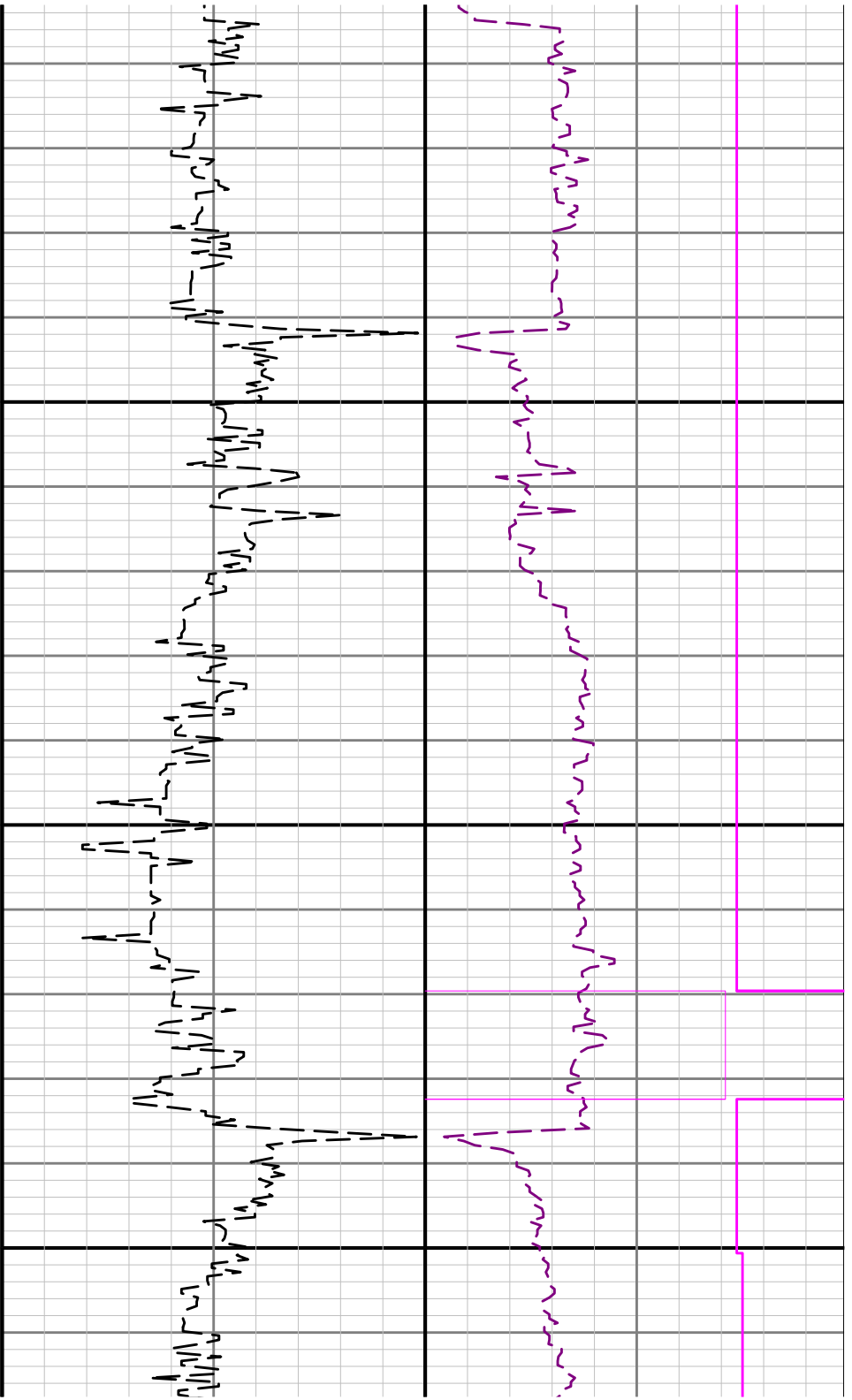


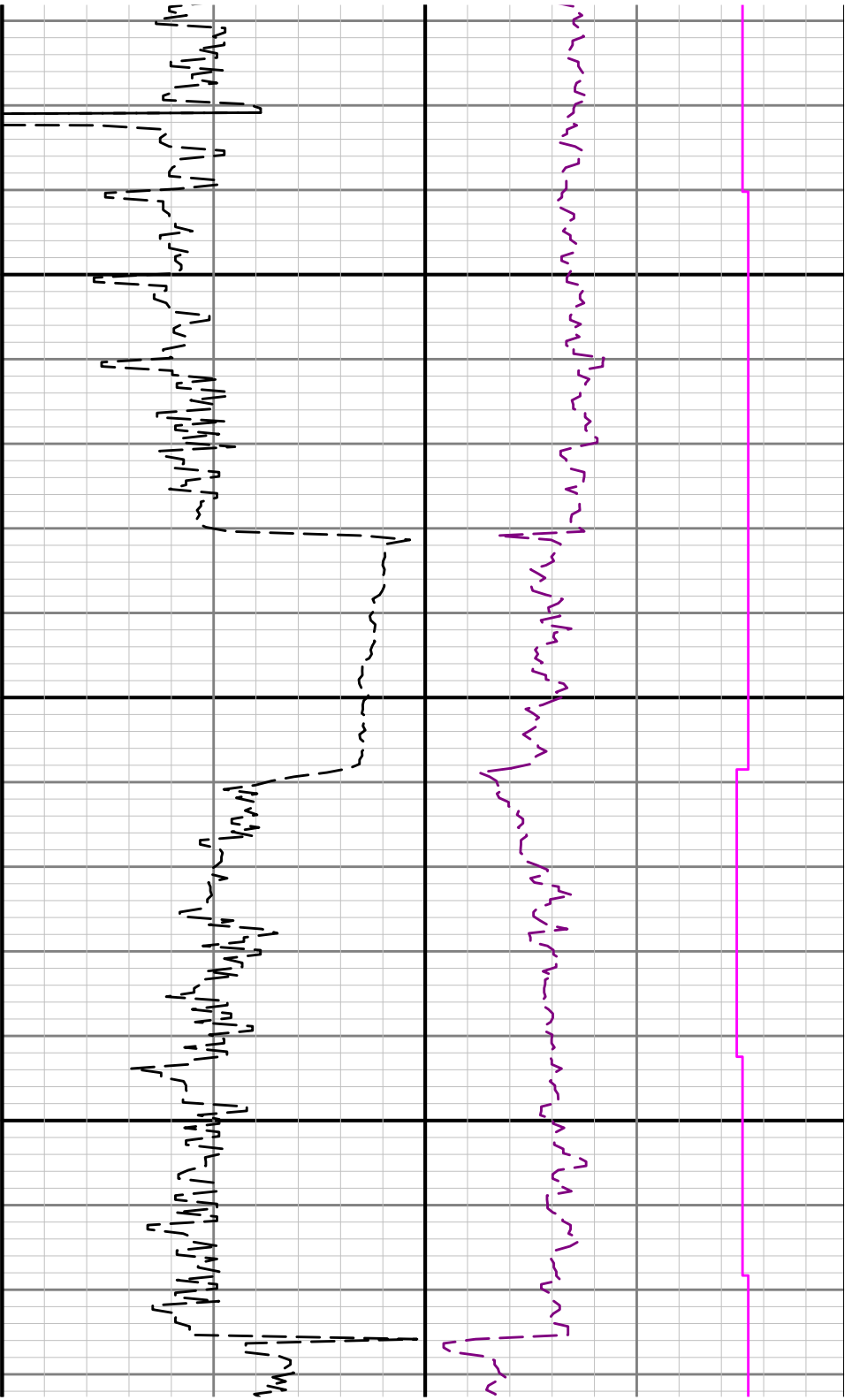


5500

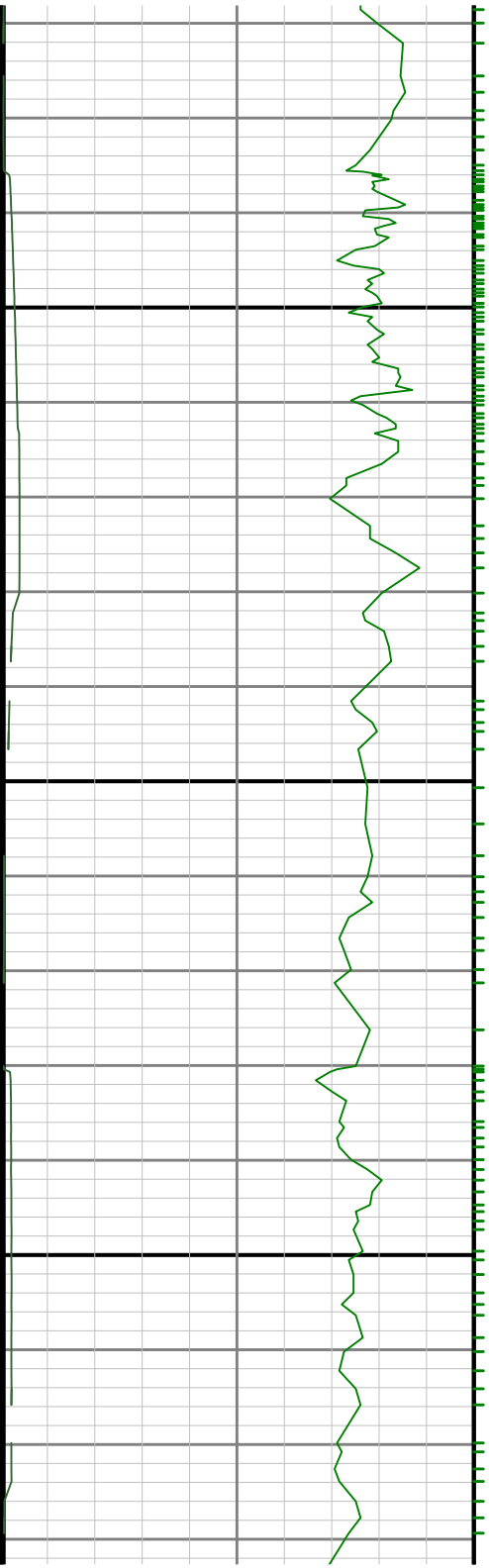
5600

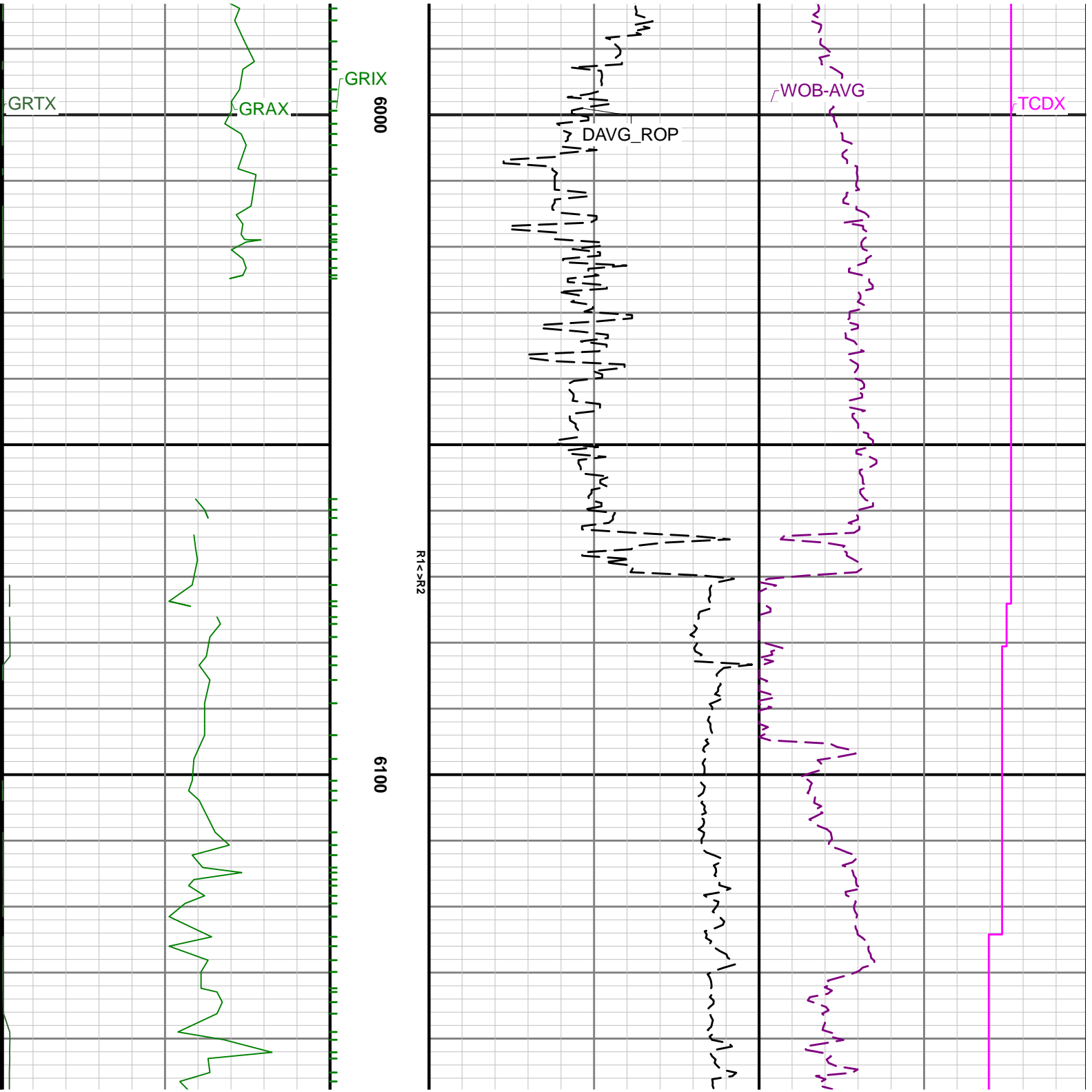


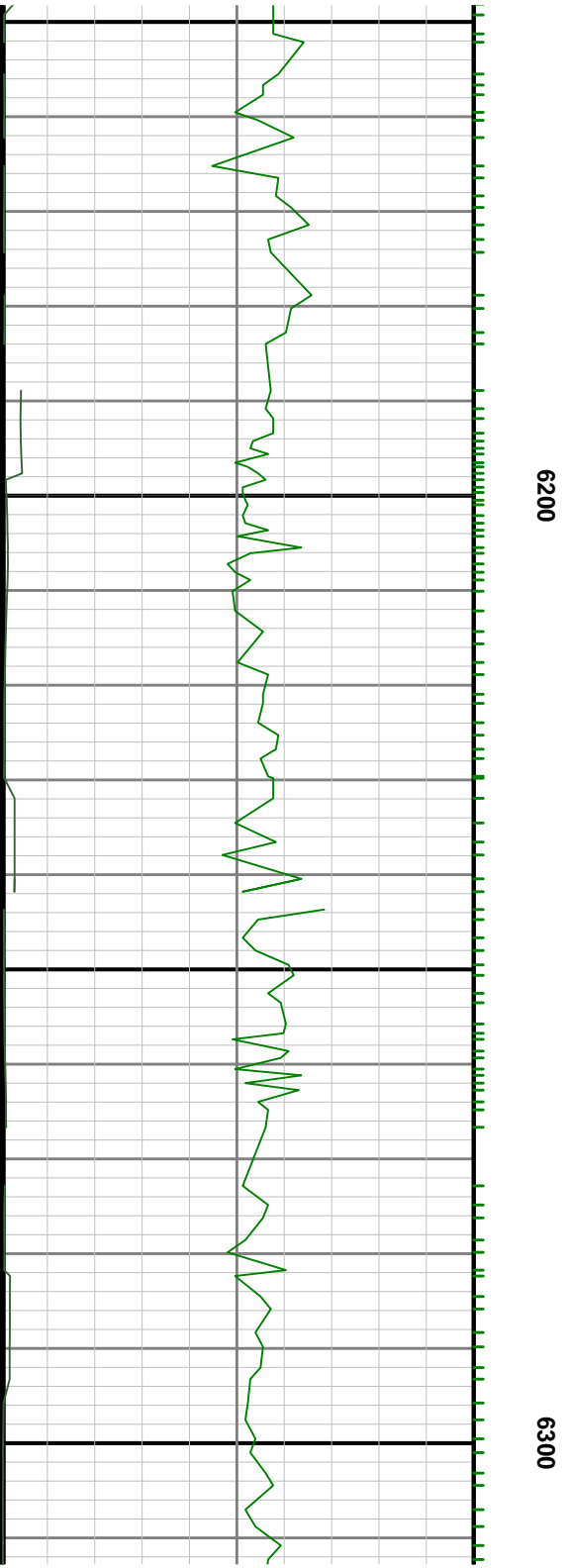
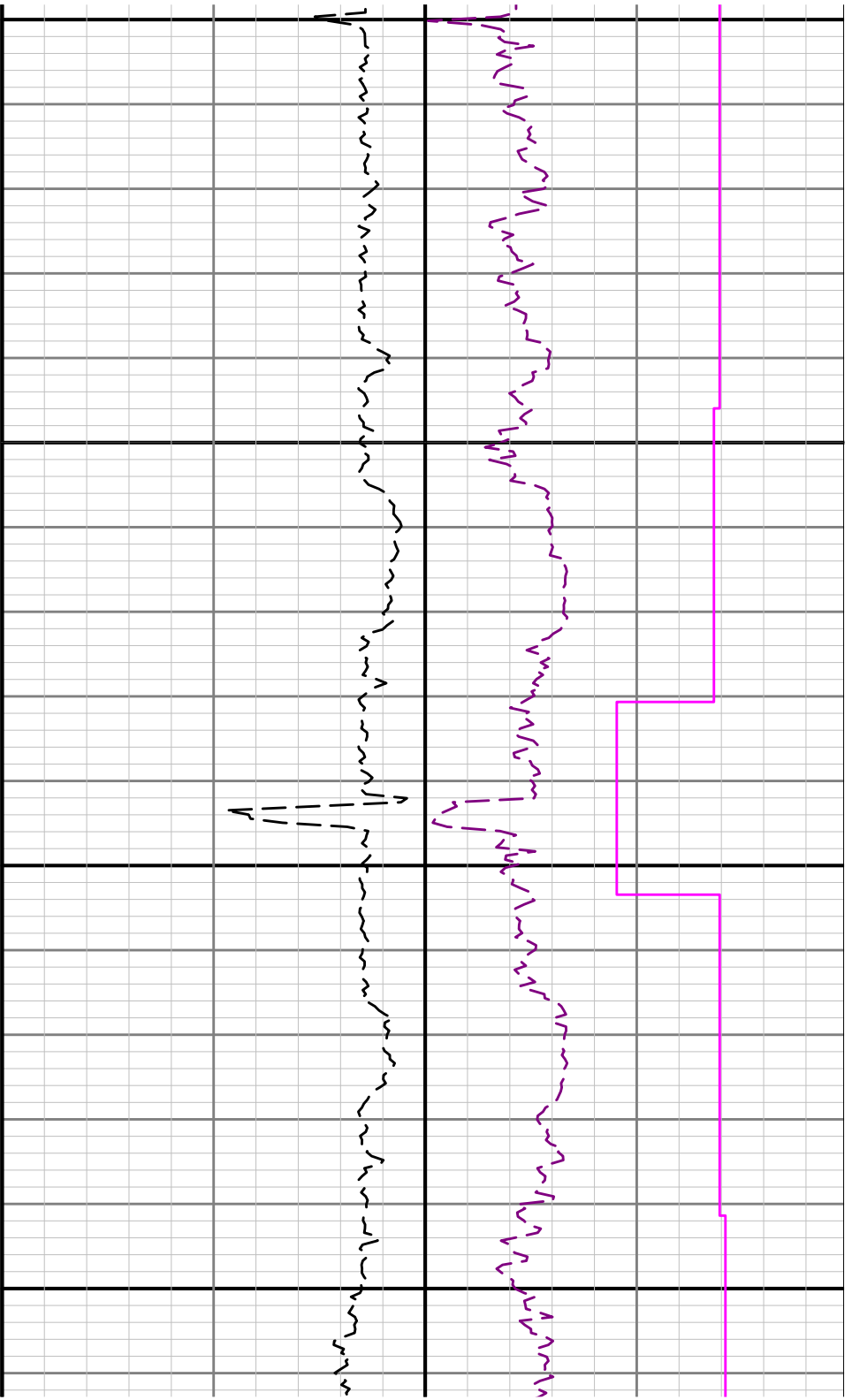


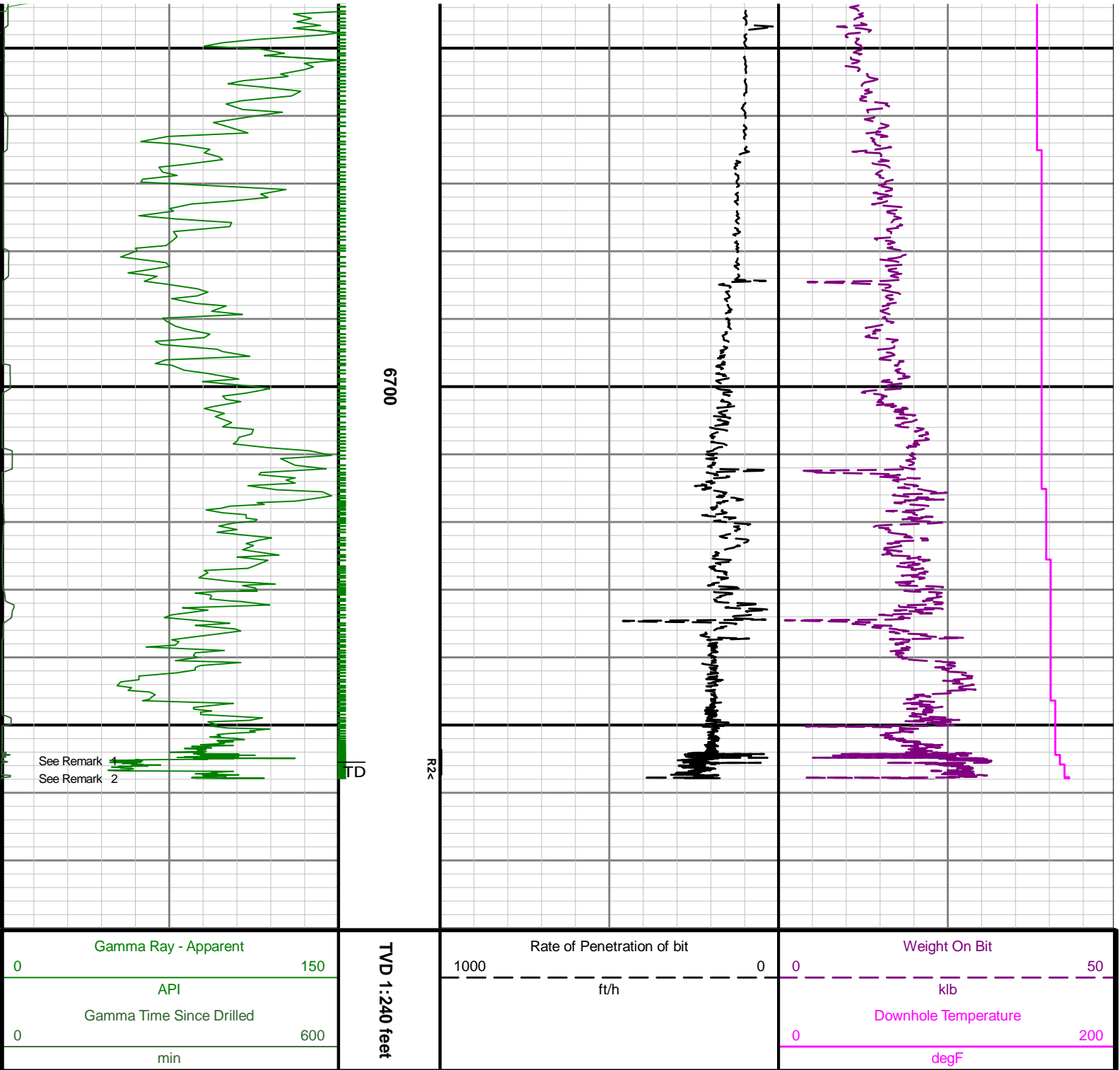


5900









Directional Survey Summary

Latitude: ௪௫°௩௩′1௫″N		Longitude: ௭௭°1௩′௫௫″W										
North Reference: Grid		Drill Depth Zero:					Rig Floor					
Vertical Datum is: Mean Sea Level		Vertical Datum to DDZ: (ft)					4884.00					
Vertical Section North: (m)		0.00					Vertical Section East: (m)			0.00		
Vertical Section Azimuth: (deg)		267.46										
Grid Convergence: (deg)		-0.71					Magnetic Declination: (deg)			8.36		
Total Correction: (deg)		7.65					TVD Calculation Method:			Minimum Curvature		
Magnetic Correction: Off							Local Magnetic Field: (nT)			52728		
Local Magnetic Dip Angle: (deg)		67.12					Local Gravity Field: (m/s2)			9.800		
Tie-In / Projection	Measured Depth (ft)	Inclination (deg)	Azimuth (deg)	Temperature (degF)	North (ft)	East (ft)	True Vertical Depth (ft)	Vertical Section (ft)	Course Length (ft)	Dog Leg Severity (deg/100ft)	Build Rate (deg/100ft)	Turn Rate (deg/100ft)
Tie-In	1800.00	0.50	358.90	N/A	-3.36	-2.15	1799.97	0.00	0.00	0.00	0.00	0.00
	1906.00	0.54	50.04	104.1	-2.58	-1.78	1905.97	1.89	106.00	0.42	0.04	48.25
	1969.00	0.57	65.34	104.1	-2.26	-1.26	1968.96	1.36	63.00	0.24	0.05	24.29
	2064.00	0.62	77.12	104.1	-1.94	-0.33	2063.96	0.42	95.00	0.14	0.05	12.40
	2158.00	0.77	80.97	106.8	-1.73	0.79	2157.95	-0.71	94.00	0.17	0.16	4.10
	2253.00	0.97	88.13	106.8	-1.60	2.22	2252.94	-2.15	95.00	0.24	0.21	7.54
	2348.00	0.91	87.83	106.8	-1.55	3.78	2347.93	-3.71	95.00	0.06	-0.06	-0.32
	2443.00	1.01	92.85	109.5	-1.56	5.37	2442.91	-5.29	95.00	0.14	0.11	5.28
	2537.00	2.42	134.97	109.5	-3.01	7.60	2536.87	-7.46	94.00	1.92	1.50	44.81
	2632.00	3.84	138.45	109.5	-6.81	11.13	2631.73	-10.82	95.00	1.51	1.49	3.66
	2727.00	5.37	146.24	112.2	-12.88	15.71	2726.42	-15.12	95.00	1.74	1.61	8.20
	2821.00	6.87	138.79	112.2	-20.77	21.86	2819.88	-20.92	94.00	1.80	1.60	-7.93
	2916.00	7.92	140.11	112.2	-30.07	29.80	2914.09	-28.44	95.00	1.12	1.11	1.39
	3010.00	7.76	138.28	120.3	-39.77	38.18	3007.21	-36.38	94.00	0.32	-0.17	-1.95
	3105.00	7.93	139.02	117.6	-49.51	46.74	3101.32	-44.50	95.00	0.21	0.18	0.78
	3295.00	7.09	137.74	117.6	-68.08	63.22	3289.69	-60.14	190.00	0.45	-0.44	-0.67
	3389.00	6.34	139.66	120.3	-76.33	70.48	3383.05	-67.03	94.00	0.83	-0.80	2.04
	3484.00	5.12	139.72	120.3	-83.56	76.62	3477.57	-72.84	95.00	1.28	-1.28	0.06
	3579.00	6.35	134.26	123.0	-90.46	83.12	3572.09	-79.03	95.00	1.41	1.29	-5.75
	3674.00	7.29	143.26	123.0	-98.96	90.49	3666.42	-86.02	95.00	1.50	0.99	9.47
	3768.00	8.89	142.30	123.0	-109.49	98.50	3759.49	-93.55	94.00	1.71	1.70	-1.02
	3863.00	9.75	142.82	128.4	-121.70	107.85	3853.23	-102.35	95.00	0.91	0.91	0.55
	3958.00	10.13	143.59	128.4	-134.84	117.67	3946.80	-111.58	95.00	0.42	0.40	0.81
	4053.00	10.41	143.62	128.4	-148.47	127.72	4040.28	-121.02	95.00	0.29	0.29	0.03
	4147.00	10.12	143.20	128.4	-161.92	137.71	4132.78	-130.39	94.00	0.32	-0.31	-0.45
	4242.00	9.23	139.88	131.1	-174.43	147.62	4226.43	-139.74	95.00	1.11	-0.94	-3.49
	4337.00	8.06	137.86	131.1	-185.19	156.99	4320.35	-148.63	95.00	1.27	-1.23	-2.13
	4432.00	7.07	135.73	133.8	-194.32	165.54	4414.52	-156.77	95.00	1.08	-1.04	-2.24
	4527.00	6.64	135.21	133.8	-202.40	173.49	4508.84	-164.35	95.00	0.46	-0.45	-0.55
	4621.00	6.60	139.54	133.8	-210.37	180.83	4602.21	-171.33	94.00	0.53	-0.04	4.61
	4716.00	6.41	145.18	139.2	-218.88	187.40	4696.60	-177.51	95.00	0.70	-0.20	5.94
	4811.00	6.33	147.18	139.2	-227.63	193.27	4791.01	-182.99	95.00	0.25	-0.08	2.11
	4905.00	6.38	148.76	139.2	-236.45	198.78	4884.44	-188.11	94.00	0.19	0.05	1.68
	5000.00	4.63	150.12	141.9	-244.29	203.43	4979.00	-192.40	95.00	1.85	-1.84	1.43
	5095.00	4.56	150.40	141.9	-250.90	207.21	5073.69	-195.88	95.00	0.08	-0.07	0.29
	5189.00	3.27	137.21	141.9	-256.12	210.87	5167.47	-199.32	94.00	1.67	-1.37	-14.03
	5284.00	1.70	123.05	144.6	-258.87	213.90	5262.38	-202.21	95.00	1.76	-1.65	-14.91
	5379.00	0.13	333.88	144.6	-259.54	215.03	5357.37	-203.32	95.00	1.91	-1.65	-157.02
	5473.00	0.33	318.77	144.6	-259.24	214.80	5451.37	-203.10	94.00	0.22	0.21	-16.07
	5568.00	0.09	259.05	147.3	-259.05	214.55	5546.36	-202.86	95.00	0.31	-0.25	-62.86
	5663.00	0.13	137.62	147.3	-259.15	214.55	5641.36	-202.85	95.00	0.20	0.04	-127.82
	5758.00	0.31	173.55	147.3	-259.48	214.65	5736.36	-202.94	95.00	0.23	0.19	37.82
	5853.00	0.33	156.71	152.7	-259.98	214.79	5830.36	-203.05	94.00	0.10	0.02	-17.91

	5852.00	0.33	156.71	152.7	-259.98	214.79	5830.36	-203.05	94.00	0.10	0.02	-17.91
	5947.00	1.09	275.23	152.7	-260.15	213.99	5925.36	-202.26	95.00	1.35	0.80	124.76
	6042.00	0.72	269.74	152.7	-260.07	212.50	6020.34	-200.76	95.00	0.40	-0.39	-5.78
	6149.00	4.00	278.52	N/A	-259.52	208.13	6127.24	-196.43	107.00	3.08	3.07	8.21
	6190.00	7.90	286.10	N/A	-258.53	204.01	6168.01	-192.35	41.00	9.68	9.51	18.49
	6244.00	12.66	286.83	N/A	-255.79	194.78	6221.13	-183.25	54.00	8.82	8.81	1.35
	6289.00	16.09	280.48	N/A	-253.22	183.92	6264.72	-172.52	45.00	8.38	7.62	-14.11
	6339.00	19.40	273.71	N/A	-251.42	168.81	6312.34	-157.51	50.00	7.79	6.62	-13.54
	6433.00	24.43	273.51	N/A	-249.22	133.81	6399.52	-122.64	94.00	5.35	5.35	-0.21
	6477.00	26.28	277.29	N/A	-247.43	115.07	6439.28	-103.99	44.00	5.58	4.20	8.59
	6528.00	29.73	280.35	N/A	-243.72	91.42	6484.30	-80.53	51.00	7.33	6.76	6.00
	6570.00	33.10	280.04	N/A	-239.85	69.87	6520.14	-59.18	42.00	8.03	8.02	-0.74
	6623.00	39.60	279.18	N/A	-234.63	38.92	6562.80	-28.48	53.00	12.30	12.26	-1.62
	6670.00	46.66	277.62	N/A	-229.97	7.15	6597.08	3.05	47.00	15.19	15.02	-3.32
	6717.00	54.19	275.48	N/A	-225.87	-28.82	6627.01	38.80	47.00	16.40	16.02	-4.55
	6764.00	60.46	271.94	N/A	-223.36	-68.27	6652.38	78.10	47.00	14.77	13.34	-7.53
	6812.00	65.71	268.75	N/A	-223.13	-111.05	6674.10	120.83	48.00	12.44	10.94	-6.65
	6859.00	70.85	266.79	N/A	-224.84	-154.66	6691.49	164.47	47.00	11.60	10.94	-4.17
	6907.00	74.70	266.92	N/A	-227.35	-200.43	6705.70	210.31	48.00	8.03	8.02	0.27
	7002.00	76.99	268.07	N/A	-231.38	-292.45	6728.93	302.42	95.00	2.68	2.41	1.21
	7096.00	81.29	267.92	N/A	-234.61	-384.69	6746.64	394.71	94.00	4.58	4.57	-0.16
	7191.00	89.48	268.22	N/A	-237.79	-479.25	6754.28	489.31	95.00	8.63	8.62	0.32
	7286.00	89.35	266.60	N/A	-242.08	-574.14	6755.25	584.31	95.00	1.71	-0.14	-1.71
	7380.00	88.34	264.55	N/A	-249.33	-667.84	6757.14	678.23	94.00	2.43	-1.07	-2.18
	7475.00	90.12	264.01	N/A	-258.80	-762.35	6758.42	773.07	95.00	1.96	1.87	-0.57
	7570.00	90.12	264.66	N/A	-268.18	-856.89	6758.22	867.93	95.00	0.68	0.00	0.68
	7665.00	90.15	263.79	N/A	-277.74	-951.40	6757.99	962.78	95.00	0.92	0.03	-0.92
	7759.00	90.28	261.86	N/A	-289.48	-1044.66	6757.64	1056.46	94.00	2.06	0.14	-2.05
	7854.00	90.18	265.06	N/A	-300.30	-1139.03	6757.26	1151.22	95.00	3.37	-0.11	3.37
	7949.00	89.97	267.16	N/A	-306.74	-1233.81	6757.14	1246.19	95.00	2.22	-0.22	2.21
	8035.00	90.15	268.92	N/A	-309.68	-1319.75	6757.05	1332.18	86.00	2.06	0.21	2.05
	8097.00	90.06	269.27	N/A	-310.66	-1381.74	6756.93	1394.15	62.00	0.58	-0.15	0.56
	8158.00	90.15	270.24	N/A	-310.92	-1442.74	6756.82	1455.10	61.00	1.60	0.15	1.59
	8218.00	90.00	271.48	N/A	-310.02	-1502.73	6756.74	1515.00	60.00	2.08	-0.25	2.07
	8310.00	90.15	274.02	N/A	-305.61	-1594.62	6756.62	1606.60	92.00	2.77	0.16	2.76
	8402.00	90.68	275.11	N/A	-298.29	-1686.32	6755.95	1697.89	92.00	1.32	0.58	1.18
	8494.00	90.43	275.32	N/A	-289.92	-1777.94	6755.06	1789.04	92.00	0.35	-0.27	0.23
	8586.00	90.03	275.74	N/A	-281.06	-1869.51	6754.69	1880.13	92.00	0.63	-0.43	0.46
	8678.00	90.12	274.19	N/A	-273.10	-1961.16	6754.57	1971.34	92.00	1.69	0.10	-1.68
	8773.00	89.69	272.51	N/A	-267.54	-2056.00	6754.73	2065.83	95.00	1.83	-0.45	-1.77
	8867.00	89.82	271.92	N/A	-263.91	-2149.92	6755.13	2159.51	94.00	0.64	0.14	-0.63
	8962.00	89.94	272.14	N/A	-260.55	-2244.86	6755.33	2254.21	95.00	0.26	0.13	0.23
	9057.00	89.94	270.93	N/A	-258.00	-2339.83	6755.43	2348.96	95.00	1.27	0.00	-1.27
	9151.00	89.72	270.74	N/A	-256.63	-2433.82	6755.71	2442.80	94.00	0.31	-0.23	-0.20
	9246.00	89.88	269.32	N/A	-256.58	-2528.81	6756.04	2537.70	95.00	1.50	0.17	-1.49
	9341.00	90.00	267.61	N/A	-259.13	-2623.78	6756.14	2632.68	95.00	1.80	0.13	-1.80
	9435.00	89.97	268.03	N/A	-262.70	-2717.71	6756.17	2726.68	94.00	0.45	-0.03	0.45
	9530.00	89.94	269.16	N/A	-265.03	-2812.68	6756.24	2821.66	95.00	1.19	-0.03	1.19
	9625.00	89.97	267.26	N/A	-268.00	-2907.63	6756.32	2916.65	95.00	2.00	0.03	-2.00
	9719.00	90.03	266.51	N/A	-273.11	-3001.49	6756.32	3010.64	94.00	0.80	0.06	-0.80
	9814.00	89.97	265.65	N/A	-279.60	-3096.27	6756.32	3105.61	95.00	0.91	-0.06	-0.91
	9909.00	90.06	269.03	N/A	-284.01	-3191.15	6756.29	3200.60	95.00	3.56	0.09	3.56
	10027.00	90.03	264.74	N/A	-290.42	-3308.95	6756.20	3318.57	118.00	3.64	-0.03	-3.64
	10098.00	90.12	264.42	N/A	-297.13	-3379.63	6756.10	3389.48	71.00	0.47	0.13	-0.45
	10193.00	90.00	264.88	N/A	-305.98	-3474.22	6756.01	3484.36	95.00	0.50	-0.13	0.48
	10287.00	90.00	264.87	N/A	-314.38	-3567.84	6756.01	3578.27	94.00	0.01	0.00	-0.01

	10287.00	90.00	264.87	N/A	-314.38	-3867.84	6756.01	3578.27	94.00	0.01	0.00	-0.01
	10382.00	89.94	268.33	N/A	-320.01	-3662.66	6756.06	3673.24	95.00	3.64	-0.06	3.64
	10476.00	90.09	269.11	N/A	-322.11	-3756.63	6756.03	3767.22	94.00	0.84	0.16	0.83
	10571.00	90.06	270.41	N/A	-322.51	-3851.63	6755.91	3862.14	95.00	1.37	-0.03	1.37
	10666.00	90.09	270.49	N/A	-321.77	-3946.63	6755.78	3957.01	95.00	0.09	0.03	0.08
	10760.00	89.78	271.61	N/A	-320.04	-4040.61	6755.89	4050.82	94.00	1.24	-0.33	1.19
	10855.00	90.28	271.49	N/A	-317.47	-4135.58	6755.84	4145.58	95.00	0.54	0.53	-0.13
	11045.00	90.18	269.98	N/A	-315.04	-4325.55	6755.08	4335.26	190.00	0.80	-0.05	-0.79
	11139.00	90.25	271.93	204.1	-313.47	-4419.53	6754.72	4429.08	94.00	2.08	0.07	2.07
	11234.00	90.25	271.18	N/A	-310.89	-4514.50	6754.31	4523.84	95.00	0.79	0.00	-0.79
	11329.00	90.25	272.79	N/A	-307.60	-4609.44	6753.89	4618.54	95.00	1.69	0.00	1.69
	11423.00	90.25	273.83	N/A	-302.17	-4703.28	6753.48	4712.05	94.00	1.11	0.00	1.11
	11518.00	90.00	272.36	N/A	-297.05	-4798.14	6753.28	4806.59	95.00	1.57	-0.26	-1.55
	11613.00	90.09	270.08	N/A	-295.02	-4893.11	6753.20	4901.38	95.00	2.40	0.09	-2.40
	11707.00	90.03	269.11	N/A	-295.69	-4987.11	6753.10	4995.31	94.00	1.03	-0.06	-1.03
	11802.00	90.03	269.03	N/A	-297.23	-5082.09	6753.05	5090.27	95.00	0.08	0.00	-0.08
	11897.00	89.97	267.75	N/A	-299.90	-5177.05	6753.05	5185.26	95.00	1.35	-0.06	-1.35
	11991.00	89.97	266.92	N/A	-304.27	-5270.95	6753.10	5279.26	94.00	0.88	0.00	-0.88
	12086.00	89.88	265.88	N/A	-310.23	-5365.76	6753.23	5374.24	95.00	1.10	-0.09	-1.09
	12180.00	89.94	266.11	N/A	-316.80	-5459.53	6753.38	5468.21	94.00	0.25	0.06	0.24
	12275.00	89.97	267.17	N/A	-322.37	-5554.37	6753.45	5563.20	95.00	1.12	0.03	1.12
	12369.00	90.00	267.75	N/A	-326.53	-5648.27	6753.47	5657.20	94.00	0.62	0.03	0.62
	12464.00	90.06	269.20	N/A	-329.06	-5743.24	6753.42	5752.18	95.00	1.53	0.06	1.53
	12558.00	89.94	268.91	N/A	-330.61	-5837.23	6753.42	5846.14	94.00	0.33	-0.13	-0.31
	12653.00	90.06	268.79	N/A	-332.52	-5932.21	6753.42	5941.11	95.00	0.18	0.13	-0.13
	12747.00	90.09	269.66	N/A	-333.79	-6026.20	6753.30	6035.07	94.00	0.93	0.03	0.93
	12842.00	90.12	268.06	N/A	-335.68	-6121.17	6753.13	6130.04	95.00	1.68	0.03	-1.68
	12936.00	90.18	267.96	N/A	-338.94	-6215.12	6752.88	6224.03	94.00	0.12	0.06	-0.11
	13031.00	90.28	268.08	N/A	-342.23	-6310.06	6752.50	6319.03	95.00	0.16	0.11	0.13
	13125.00	89.85	268.27	N/A	-345.22	-6404.01	6752.39	6413.02	94.00	0.50	-0.46	0.20
	13220.00	89.72	267.63	N/A	-348.62	-6498.95	6752.75	6508.01	95.00	0.69	-0.14	-0.67
	13314.00	89.72	267.41	N/A	-352.69	-6592.86	6753.21	6602.01	94.00	0.23	0.00	-0.23
	13409.00	89.72	267.48	N/A	-356.92	-6687.77	6753.67	6697.01	95.00	0.07	0.00	0.07
	13503.00	89.66	267.34	N/A	-361.17	-6781.67	6754.18	6791.01	94.00	0.16	-0.06	-0.15
	13597.00	89.78	266.98	N/A	-365.83	-6875.55	6754.64	6885.01	94.00	0.40	0.13	-0.38
	13692.00	89.78	265.44	N/A	-372.10	-6970.34	6755.01	6979.98	95.00	1.62	0.00	-1.62
	13787.00	89.72	265.38	N/A	-379.71	-7065.03	6755.42	7074.92	95.00	0.09	-0.06	-0.06
	13860.00	89.75	265.43	N/A	-385.55	-7137.80	6755.76	7147.87	73.00	0.08	0.04	0.07
Projection	13885.00	89.75	265.43	N/A	-387.55	-7162.72	6755.87	7172.86	25.00	0.00	0.00	0.00