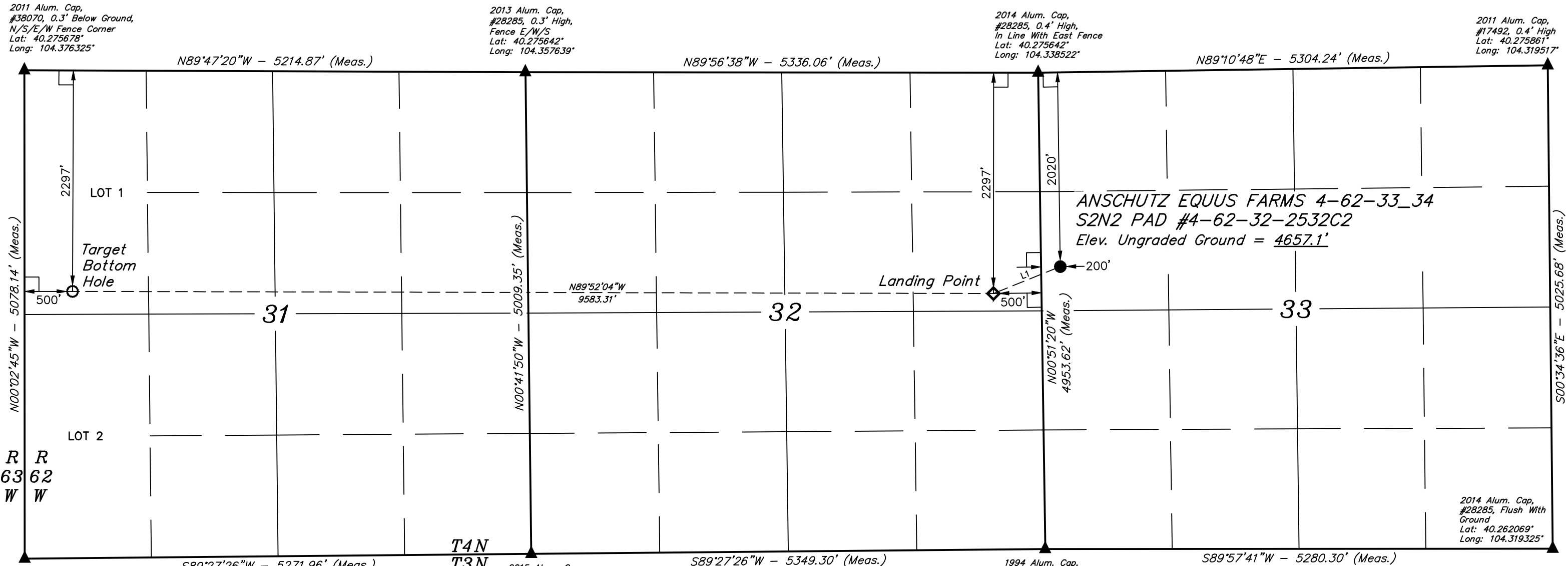


T4N, R62W, 6th P.M.

BILL BARRETT CORPORATION
ANSCHUTZ EQUUS FARMS 4-62-33_34 S2N2 PAD
#4-62-32-2532C2
SW 1/4 NW 1/4, SECTION 33, T4N, R62W, 6th P.M.
WELD COUNTY, COLORADO



2015 Alum. Cap, #28285, 0.3' High, N-S Fence
Lat: 40.261742°
Long: 104.376286°

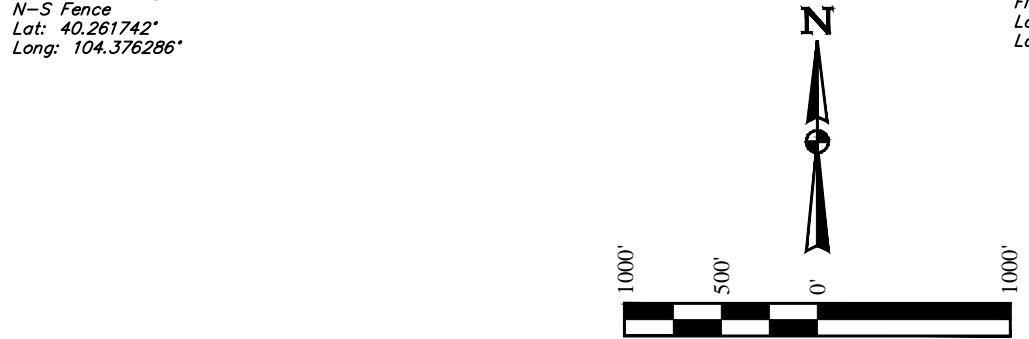
2015 Alum. Cap, #28285, 0.3' High, Fence E/W/S
Lat: 40.275642°
Long: 104.357639°

2015 Alum. Cap, #28285, 0.3' High, Flush W/ Ground
Lat: 40.261894°
Long: 104.357403°

2014 Alum. Cap, #23501, E-W Fence
Lat: 40.262047°
Long: 104.338242°

2014 Alum. Cap, #28285, 0.4' High, In Line With East Fence
Lat: 40.275642°
Long: 104.338522°

2011 Alum. Cap, #17492, 0.4' High
Lat: 40.275861°
Long: 104.319517°



LINE TABLE		
LINE	DIRECTION	LENGTH
L1	S68°05'55"W	749.97'

CERTIFICATE
THIS IS TO CERTIFY THAT THE ABOVE PLAT WAS PREPARED FROM FIELD NOTES OF ACTUAL SURVEYS MADE BY ME OR UNDER MY SUPERVISION, AND THAT THE SAME ARE TRUE AND CORRECT TO THE BEST OF MY KNOWLEDGE AND BELIEF.

Greg Weimer
REGISTERED LAND SURVEYOR
REGISTRATION NO. 28285
STATE OF COLORADO
09-10-15

- LEGEND:
- 90° SYMBOL
 - PROPOSED WELLHEAD.
 - TARGET BOTTOM HOLE.
 - LANDING POINT.
 - SECTION CORNERS LOCATED.

BASIS OF BEARINGS
BASIS OF BEARINGS IS A G.P.S. OBSERVATION

BASIS OF ELEVATION
SPOT ELEVATION LOCATED AT THE NORTHEAST CORNER OF SECTION 24, T5N, R62W, 6th. P.M. TAKEN FROM THE POINT OF ROCKS, QUADRANGLE, COLORADO, WELD COUNTY, 7.5 MINUTE QUAD (TOPOGRAPHIC MAP) PUBLISHED BY THE UNITED STATES DEPARTMENT OF THE INTERIOR, GEOLOGICAL SURVEY. SAID ELEVATION IS MARKED AS BEING 4530 FEET.

NAD 83 (TARGET BOTTOM HOLE)	NAD 83 (LANDING POINT)	NAD 83 (SURFACE LOCATION)
LATITUDE = 40°16'09.73" (40.269369)	LATITUDE = 40°16'09.61" (40.269336)	LATITUDE = 40°16'12.38" (40.270106)
LONGITUDE = 104°22'28.26" (104.374517)	LONGITUDE = 104°20'24.66" (104.340183)	LONGITUDE = 104°20'15.69" (104.337692)
NAD 27 (TARGET BOTTOM HOLE)	NAD 27 (LANDING POINT)	NAD 27 (SURFACE LOCATION)
LATITUDE = 40°16'09.80" (40.269389)	LATITUDE = 40°16'09.68" (40.269356)	LATITUDE = 40°16'12.45" (40.270125)
LONGITUDE = 104°22'26.43" (104.374008)	LONGITUDE = 104°20'22.83" (104.339675)	LONGITUDE = 104°20'13.86" (104.337183)
STATE PLANE NAD 83 (CO. NORTH)	STATE PLANE NAD 83 (CO. NORTH)	STATE PLANE NAD 83 (CO. NORTH)
N: 1342965.80 E: 3314054.38	N: 1343077.47 E: 3323634.52	N: 1343366.83 E: 3324326.21
STATE PLANE NAD 27 (CO. NORTH)	STATE PLANE NAD 27 (CO. NORTH)	STATE PLANE NAD 27 (CO. NORTH)
N: 342968.47 E: 2314204.74	N: 343080.22 E: 2323784.88	N: 343369.58 E: 2324476.57

UINTAH
ENGINEERING & LAND SURVEYING

UELS, LLC
Corporate Office * 85 South 200 East
Vernal, UT 84078 * (435) 789-1017

SURVEYED BY: GREG WEIMER, C.J. DATE: 09-10-15

DRAWN BY: K.B. DATE DRAWN: 09-24-15

SCALE: 1" = 1000' REVISED: 00-00-00

WELL LOCATION PLAT

PDOP = 1.3