



LEGEND:

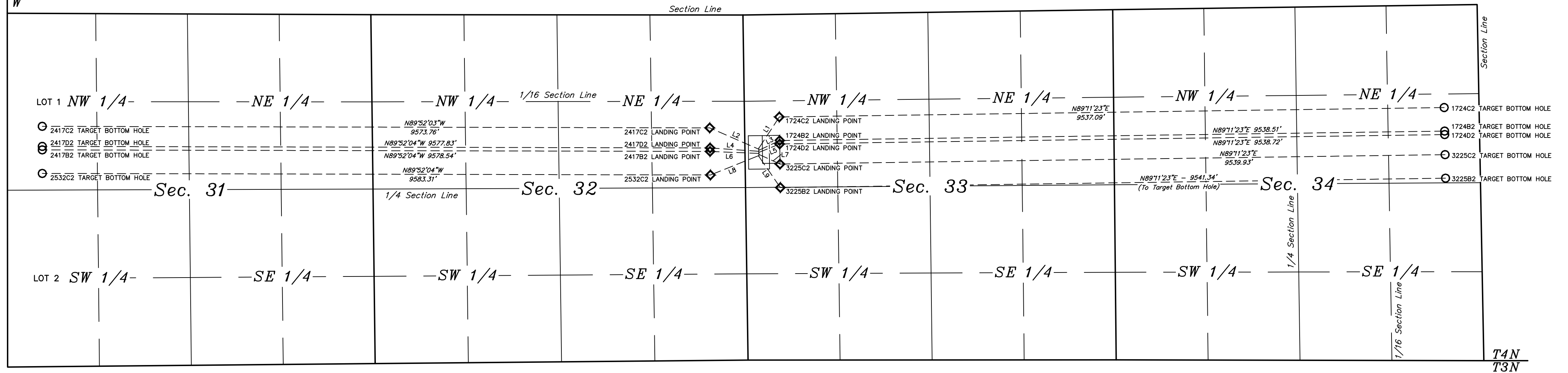
- ◊ = LANDING POINT.
- = TARGET BOTTOM HOLE.

LINE	DIRECTION	LENGTH
L1	N33°12'18"E	535.49'
L2	N66°31'09"W	768.39'
L3	N64°49'22"E	329.21'
L4	N86°03'48"W	702.44'
L5	N68°04'30"E	321.50'
L6	N87°41'21"W	701.06'
L7	S65°28'41"E	332.11'
L8	S68°05'55"W	749.97'
L9	S34°32'08"E	541.21'



R
63
W

R
62
W



T4N
T3N

NOTES:

BILL BARRETT CORPORATION
 ANSCHUTZ EQUUS FARMS 4-62-33 34 S2N2 PAD
 #4-62-33-3225B2, 3225C2, 1724D2, 1724B2, 1724C2,
 #4-62-32-2532C2, 2417B2, 2417D2 & 2417C2
 SW 1/4 NW 1/4, SECTION 33, T4N, R62W, 6th P.M.
 WELD COUNTY, COLORADO

DRAWN BY: J.S.	DATE DRAWN: 02-18-14
SCALE: 1" = 1000'	REVISED: 09-30-15 K.B.

MULTI-WELL PLAN **FIGURE #5**



UELS, LLC
 Corporate Office * 85 South 200 East
 Vernal, UT 84078 * (435) 789-1017