

LEGEND:

● PROPOSED LOCATION



BILL BARRETT CORPORATION

ANSCHUTZ EQUUS FARMS 4-62-33_34 S2N2 PAD
 #4-62-33-3225B2, 3225C2, 1724D2, 1724B2, 1724C2,
 #4-62-32-2532C2, 2417B2, 2417D2 & 2417C2
 SW 1/4 NW 1/4, SECTION 33, T4N, R62W, 6th P.M.
 WELD COUNTY, COLORADO

DRAWN BY: T.W.

DATE DRAWN: 01-27-14

SCALE: 1:100,000

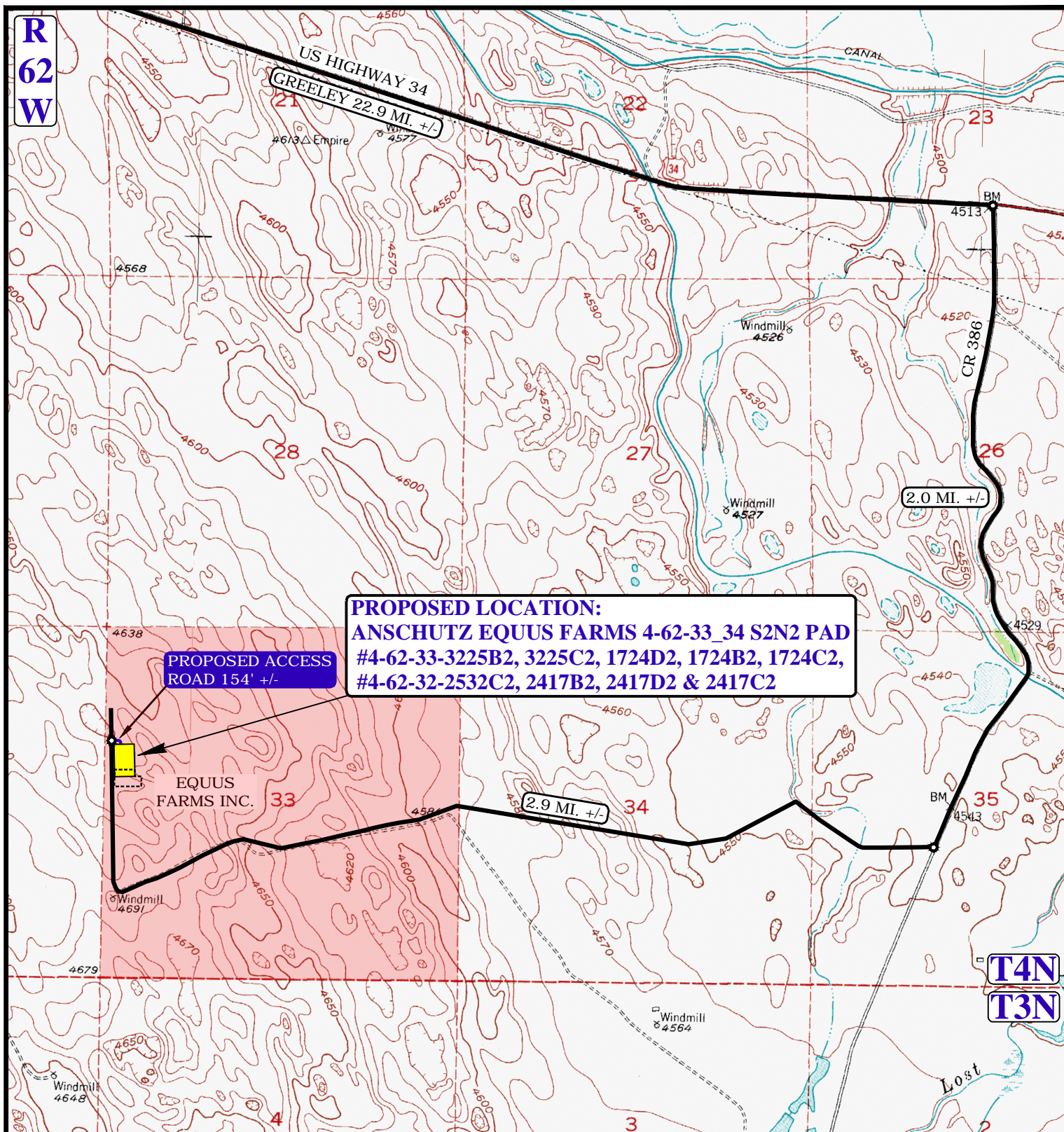
REVISED: 09-24-15 J.L.G.

ACCESS ROAD MAP

TOPO A



UELS, LLC
 Corporate Office * 85 South 200 East
 Vernal, UT 84078 * (435) 789-1017



NOTE: PARCEL DATA SHOWN HAS BEEN OBTAINED FROM VARIOUS SOURCES AND SHOULD BE USED FOR MAPPING, GRAPHIC AND PLANNING PURPOSES ONLY. NO WARRANTY IS MADE BY UINAH ENGINEERING AND LAND SURVEYING (UELS) FOR ACCURACY OF THE PARCEL DATA.

LEGEND:

— EXISTING ROAD
- - - PROPOSED ROAD

BILL BARRETT CORPORATION

ANSCHUTZ EQUUS FARMS 4-62-33_34 S2N2 PAD
#4-62-33-3225B2, 3225C2, 1724D2, 1724B2, 1724C2,
#4-62-32-2532C2, 2417B2, 2417D2 & 2417C2
SW 1/4 NW 1/4, SECTION 33, T4N, R62W, 6th P.M.
WELD COUNTY, COLORADO

DRAWN BY: T.W.

DATE DRAWN: 01-27-14

SCALE: 1"=2000'

REVISED: 09-24-15 J.L.G.

ACCESS ROAD MAP

TOPO B



UELS, LLC
Corporate Office * 85 South 200 East
Vernal, UT 84078 * (435) 789-1017



PROCEED IN AN EASTERLY, THEN SOUTHEASTERLY DIRECTION FROM GREELEY, COLORADO ALONG U.S. HIGHWAY 34 APPROXIMATELY 22.9 MILES TO THE JUNCTION OF THIS ROAD AND COUNTY ROAD 386 TO THE SOUTH; TURN RIGHT AND PROCEED IN A SOUTHERLY DIRECTION APPROXIMATELY 2.0 MILES TO THE JUNCTION OF THIS ROAD AND AN EXISTING ROAD TO THE WEST; TURN RIGHT AND PROCEED IN A WESTERLY, THEN NORTHERLY DIRECTION APPROXIMATELY 2.9 MILES TO THE BEGINNING OF THE PROPOSED ACCESS ROAD TO THE EAST; FOLLOW ROAD FLAGS IN AN EASTERLY DIRECTION APPROXIMATELY 154' TO THE PROPOSED LOCATION.

TOTAL DISTANCE FROM GREELEY, COLORADO TO THE PROPOSED LOCATION IS APPROXIMATELY 27.8 MILES.

BILL BARRETT CORPORATION

ANSCHUTZ EQUUS FARMS 4-62-33_34 S2N2 PAD
#4-62-33-3225B2, 3225C2, 1724D2, 1724B2, 1724C2,
#4-62-32-2532C2, 2417B2, 2417D2 & 2417C2
SW 1/4 NW 1/4, SECTION 33, T4N, R62W, 6th P.M.
WELD COUNTY, COLORADO



UELS, LLC
Corporate Office * 85 South 200 East
Vernal, UT 84078 * (435) 789-1017

DRAWN BY: T.W.

DATE DRAWN: 01-27-14

REVISED: 09-24-15 J.L.G.

ROAD DESCRIPTION