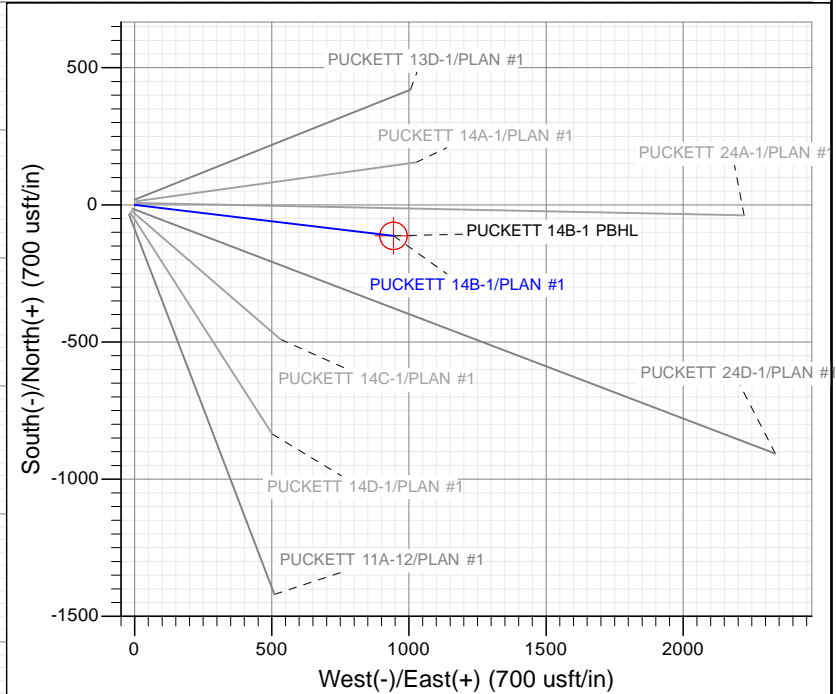
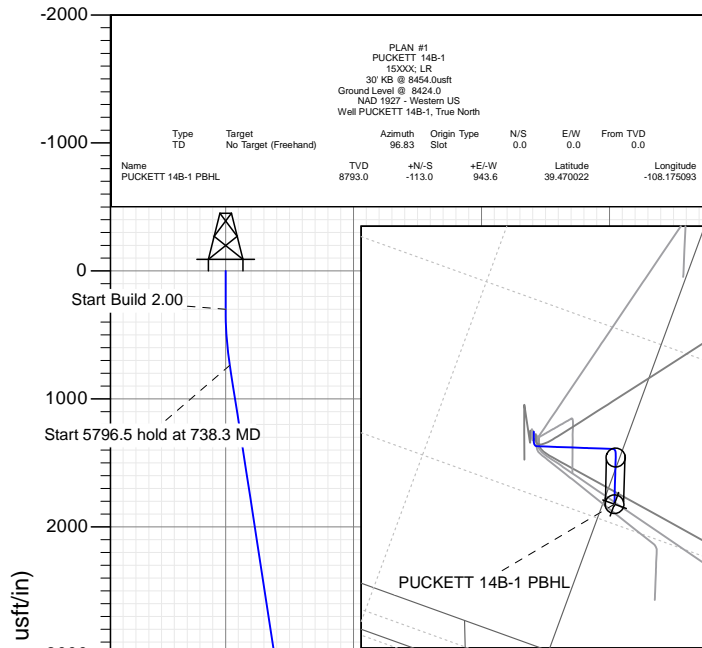


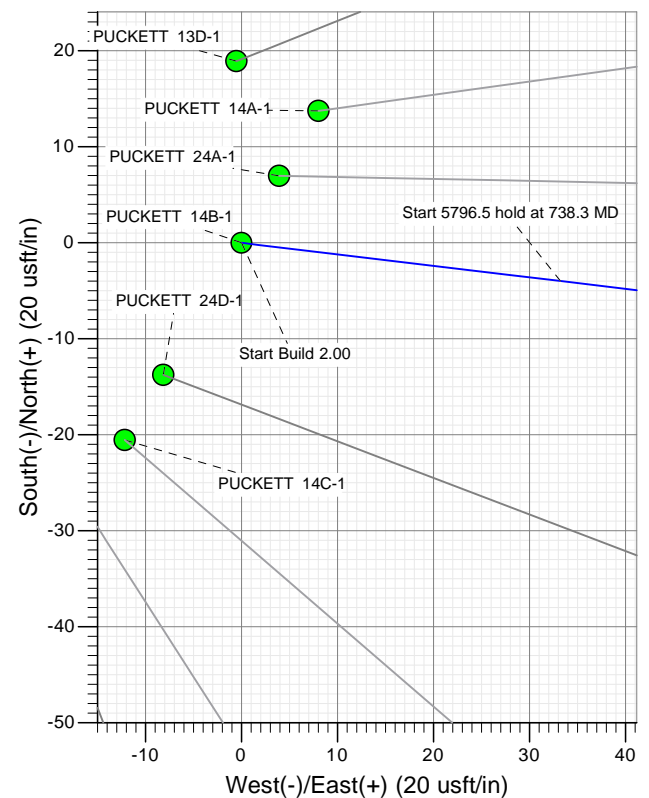
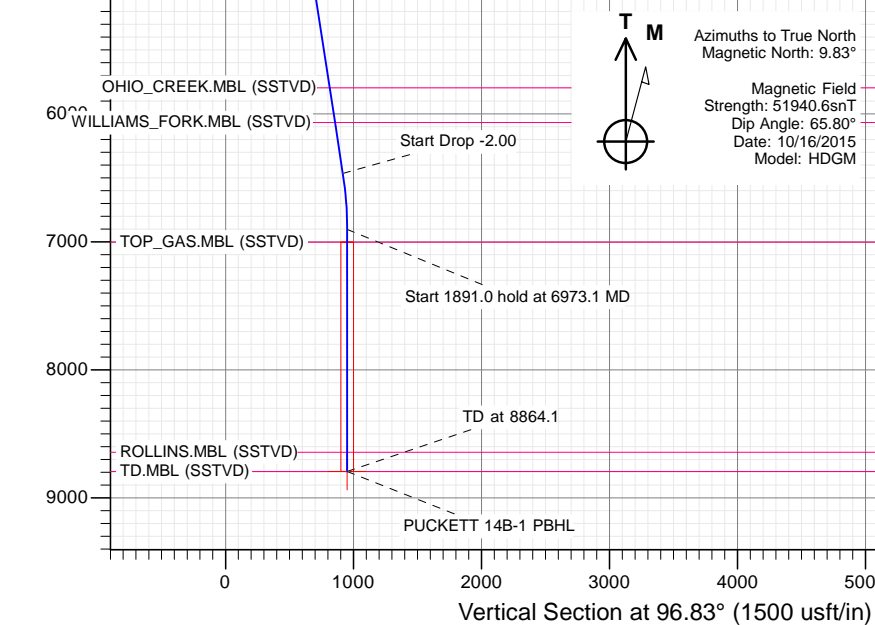


## SECTION DETAILS

Sec	MD	Inc	Azi	TVD	+N/-S	+E/-W	Dleg	TFace	VFace	Target
1	0.0	0.00	0.00	0.0	0.0	0.0	0.00	0.00	0.0	
2	300.0	0.00	0.00	300.0	0.0	0.0	0.00	0.00	0.0	
3	738.3	8.77	96.83	736.6	-4.0	33.2	2.00	96.83	33.5	
4	6534.8	8.77	96.83	6465.4	-109.0	910.4	0.00	0.00	916.9	
5	6973.1	0.00	0.00	6902.0	-113.0	943.6	2.00	180.00	950.4	
6	8864.1	0.00	0.00	8793.0	-113.0	943.6	0.00	0.00	950.4	PUCKETT 14B-1 PBHL



Project: Garfield County, CO (UTM 1  
Site: S2-T7S-R97W  
Well: PUCKETT 14B-1  
Wellbore: OH  
Design: PLAN #1



## WELL DETAILS: PUCKETT 14B-1

+N/-S	+E/-W	Northing	Ground Level:	8424.0	Latitude	Longitude
0.0	0.0	14345653.40	Easting	2436753.30	39.470333	-108.178434

CATHEDRAL



## Planning Report

<b>Database:</b>	USA EDM 5000 Multi Users DB	<b>Local Co-ordinate Reference:</b>	Well PUCKETT 14B-1
<b>Company:</b>	Caerus Oil & Gas	<b>TVD Reference:</b>	30' KB @ 8454.0usft
<b>Project:</b>	Garfield County, CO (UTM 12N)	<b>MD Reference:</b>	30' KB @ 8454.0usft
<b>Site:</b>	S2-T7S-R97W	<b>North Reference:</b>	True
<b>Well:</b>	PUCKETT 14B-1	<b>Survey Calculation Method:</b>	Minimum Curvature
<b>Wellbore:</b>	OH		
<b>Design:</b>	PLAN #1		

<b>Project</b>	Garfield County, CO (UTM 12N)		
<b>Map System:</b>	Universal Transverse Mercator (US Survey Feet)	<b>System Datum:</b>	Mean Sea Level
<b>Geo Datum:</b>	NAD 1927 - Western US		
<b>Map Zone:</b>	Zone 12N (114 W to 108 W)		

Site		S2-T7S-R97W			
Site Position:		Northing:	14,345,665.30 usft	Latitude:	39.470366
From:	Map	Easting:	2,436,748.30 usft	Longitude:	-108.178450
Position Uncertainty:	0.0 usft	Slot Radius:	13-3/16 "	Grid Convergence:	1.79 °

Well	PUCKETT 14B-1					
Well Position	+N/-S	0.0 usft	Northing:	14,345,653.40 usft	Latitude:	39.470333
	+E/-W	0.0 usft	Easting:	2,436,753.30 usft	Longitude:	-108.178434
Position Uncertainty		0.0 usft	Wellhead Elevation:	0.0 usft	Ground Level:	8,424.0 usft

<b>Wellbore</b>	OH				
<b>Magnetics</b>	<b>Model Name</b>	<b>Sample Date</b>	<b>Declination</b> (°)	<b>Dip Angle</b> (°)	<b>Field Strength</b> (nT)
	HDGM	10/16/2015	9.83	65.80	51,941

<b>Design</b>	PLAN #1			
<b>Audit Notes:</b>				
<b>Version:</b>	<b>Phase:</b>	PLAN	<b>Tie On Depth:</b>	0.0
<b>Vertical Section:</b>	<b>Depth From (TVD)</b> (usft)	<b>+N/-S</b> (usft)	<b>+E/-W</b> (usft)	<b>Direction</b> (°)
	0.0	0.0	0.0	96.83

<b>Plan Sections</b>										
Measured Depth (usft)	Inclination (°)	Azimuth (°)	Vertical Depth (usft)	+N/-S (usft)	+E/-W (usft)	Dogleg Rate (°/100usft)	Build Rate (°/100usft)	Turn Rate (°/100usft)	TFO (°)	Target
0.0	0.00	0.00	0.0	0.0	0.0	0.00	0.00	0.00	0.00	
300.0	0.00	0.00	300.0	0.0	0.0	0.00	0.00	0.00	0.00	
738.3	8.77	96.83	736.6	-4.0	33.2	2.00	2.00	0.00	96.83	
6,534.8	8.77	96.83	6,465.4	-109.0	910.4	0.00	0.00	0.00	0.00	
6,973.1	0.00	0.00	6,902.0	-113.0	943.6	2.00	-2.00	0.00	180.00	
8,864.1	0.00	0.00	8,793.0	-113.0	943.6	0.00	0.00	0.00	0.00	PUCKETT 14B-1 PBH

# Planning Report

<b>Database:</b>	USA EDM 5000 Multi Users DB	<b>Local Co-ordinate Reference:</b>	Well PUCKETT 14B-1
<b>Company:</b>	Caerus Oil & Gas	<b>TVD Reference:</b>	30' KB @ 8454.0usft
<b>Project:</b>	Garfield County, CO (UTM 12N)	<b>MD Reference:</b>	30' KB @ 8454.0usft
<b>Site:</b>	S2-T7S-R97W	<b>North Reference:</b>	True
<b>Well:</b>	PUCKETT 14B-1	<b>Survey Calculation Method:</b>	Minimum Curvature
<b>Wellbore:</b>	OH		
<b>Design:</b>	PLAN #1		

Planned Survey									
Measured Depth (usft)	Inclination (°)	Azimuth (°)	Vertical Depth (usft)	+N/-S (usft)	+E/-W (usft)	Vertical Section (usft)	Dogleg Rate (°/100usft)	Build Rate (°/100u)	Comments / Formations
0.0	0.00	0.00	0.0	0.0	0.0	0.0	0.00	0.00	
100.0	0.00	0.00	100.0	0.0	0.0	0.0	0.00	0.00	
200.0	0.00	0.00	200.0	0.0	0.0	0.0	0.00	0.00	
300.0	0.00	0.00	300.0	0.0	0.0	0.0	0.00	0.00	Start Build 2.00
400.0	2.00	96.83	400.0	-0.2	1.7	1.7	2.00	2.00	
500.0	4.00	96.83	499.8	-0.8	6.9	7.0	2.00	2.00	
600.0	6.00	96.83	599.5	-1.9	15.6	15.7	2.00	2.00	
700.0	8.00	96.83	698.7	-3.3	27.7	27.9	2.00	2.00	
738.3	8.77	96.83	736.6	-4.0	33.2	33.5	2.00	2.00	Start 5796.5 hold at 738.3 MD
800.0	8.77	96.83	797.6	-5.1	42.6	42.9	0.00	0.00	
900.0	8.77	96.83	896.4	-6.9	57.7	58.1	0.00	0.00	
1,000.0	8.77	96.83	995.2	-8.7	72.8	73.3	0.00	0.00	
1,100.0	8.77	96.83	1,094.1	-10.5	88.0	88.6	0.00	0.00	
1,200.0	8.77	96.83	1,192.9	-12.3	103.1	103.8	0.00	0.00	
1,300.0	8.77	96.83	1,291.7	-14.2	118.2	119.1	0.00	0.00	
1,400.0	8.77	96.83	1,390.6	-16.0	133.4	134.3	0.00	0.00	
1,500.0	8.77	96.83	1,489.4	-17.8	148.5	149.6	0.00	0.00	
1,600.0	8.77	96.83	1,588.2	-19.6	163.6	164.8	0.00	0.00	
1,700.0	8.77	96.83	1,687.1	-21.4	178.8	180.0	0.00	0.00	
1,800.0	8.77	96.83	1,785.9	-23.2	193.9	195.3	0.00	0.00	
1,900.0	8.77	96.83	1,884.7	-25.0	209.0	210.5	0.00	0.00	
2,000.0	8.77	96.83	1,983.6	-26.8	224.2	225.8	0.00	0.00	
2,100.0	8.77	96.83	2,082.4	-28.7	239.3	241.0	0.00	0.00	
2,200.0	8.77	96.83	2,181.2	-30.5	254.4	256.2	0.00	0.00	
2,300.0	8.77	96.83	2,280.0	-32.3	269.6	271.5	0.00	0.00	
2,400.0	8.77	96.83	2,378.9	-34.1	284.7	286.7	0.00	0.00	
2,500.0	8.77	96.83	2,477.7	-35.9	299.8	302.0	0.00	0.00	
2,600.0	8.77	96.83	2,576.5	-37.7	315.0	317.2	0.00	0.00	
2,700.0	8.77	96.83	2,675.4	-39.5	330.1	332.4	0.00	0.00	
2,800.0	8.77	96.83	2,774.2	-41.3	345.2	347.7	0.00	0.00	
2,900.0	8.77	96.83	2,873.0	-43.2	360.3	362.9	0.00	0.00	
3,000.0	8.77	96.83	2,971.9	-45.0	375.5	378.2	0.00	0.00	
3,100.0	8.77	96.83	3,070.7	-46.8	390.6	393.4	0.00	0.00	
3,200.0	8.77	96.83	3,169.5	-48.6	405.7	408.6	0.00	0.00	
3,300.0	8.77	96.83	3,268.4	-50.4	420.9	423.9	0.00	0.00	
3,400.0	8.77	96.83	3,367.2	-52.2	436.0	439.1	0.00	0.00	
3,500.0	8.77	96.83	3,466.0	-54.0	451.1	454.4	0.00	0.00	
3,600.0	8.77	96.83	3,564.9	-55.8	466.3	469.6	0.00	0.00	
3,700.0	8.77	96.83	3,663.7	-57.7	481.4	484.9	0.00	0.00	
3,800.0	8.77	96.83	3,762.5	-59.5	496.5	500.1	0.00	0.00	
3,900.0	8.77	96.83	3,861.4	-61.3	511.7	515.3	0.00	0.00	
4,000.0	8.77	96.83	3,960.2	-63.1	526.8	530.6	0.00	0.00	
4,100.0	8.77	96.83	4,059.0	-64.9	541.9	545.8	0.00	0.00	
4,200.0	8.77	96.83	4,157.9	-66.7	557.1	561.1	0.00	0.00	
4,300.0	8.77	96.83	4,256.7	-68.5	572.2	576.3	0.00	0.00	
4,400.0	8.77	96.83	4,355.5	-70.3	587.3	591.5	0.00	0.00	
4,500.0	8.77	96.83	4,454.3	-72.2	602.5	606.8	0.00	0.00	
4,600.0	8.77	96.83	4,553.2	-74.0	617.6	622.0	0.00	0.00	
4,700.0	8.77	96.83	4,652.0	-75.8	632.7	637.3	0.00	0.00	
4,800.0	8.77	96.83	4,750.8	-77.6	647.9	652.5	0.00	0.00	
4,900.0	8.77	96.83	4,849.7	-79.4	663.0	667.7	0.00	0.00	
5,000.0	8.77	96.83	4,948.5	-81.2	678.1	683.0	0.00	0.00	

# Planning Report

<b>Database:</b>	USA EDM 5000 Multi Users DB	<b>Local Co-ordinate Reference:</b>	Well PUCKETT 14B-1
<b>Company:</b>	Caerus Oil & Gas	<b>TVD Reference:</b>	30' KB @ 8454.0usft
<b>Project:</b>	Garfield County, CO (UTM 12N)	<b>MD Reference:</b>	30' KB @ 8454.0usft
<b>Site:</b>	S2-T7S-R97W	<b>North Reference:</b>	True
<b>Well:</b>	PUCKETT 14B-1	<b>Survey Calculation Method:</b>	Minimum Curvature
<b>Wellbore:</b>	OH		
<b>Design:</b>	PLAN #1		

Planned Survey									
Measured Depth (usft)	Inclination (°)	Azimuth (°)	Vertical Depth (usft)	+N/-S (usft)	+E/-W (usft)	Vertical Section (usft)	Dogleg Rate (°/100usft)	Build Rate (°/100u)	Comments / Formations
5,100.0	8.77	96.83	5,047.3	-83.0	693.3	698.2	0.00	0.00	
5,200.0	8.77	96.83	5,146.2	-84.8	708.4	713.5	0.00	0.00	
5,300.0	8.77	96.83	5,245.0	-86.6	723.5	728.7	0.00	0.00	
5,400.0	8.77	96.83	5,343.8	-88.5	738.7	743.9	0.00	0.00	
5,500.0	8.77	96.83	5,442.7	-90.3	753.8	759.2	0.00	0.00	
5,600.0	8.77	96.83	5,541.5	-92.1	768.9	774.4	0.00	0.00	
5,700.0	8.77	96.83	5,640.3	-93.9	784.1	789.7	0.00	0.00	
5,800.0	8.77	96.83	5,739.2	-95.7	799.2	804.9	0.00	0.00	
5,858.5	8.77	96.83	5,797.0	-96.8	808.1	813.8	0.00	0.00	OHIO_CREEK.MBL (SSTVD)
5,900.0	8.77	96.83	5,838.0	-97.5	814.3	820.1	0.00	0.00	
6,000.0	8.77	96.83	5,936.8	-99.3	829.5	835.4	0.00	0.00	
6,100.0	8.77	96.83	6,035.7	-101.1	844.6	850.6	0.00	0.00	
6,132.7	8.77	96.83	6,068.0	-101.7	849.5	855.6	0.00	0.00	WILLIAMS_FORK.MBL (SSTVD)
6,200.0	8.77	96.83	6,134.5	-103.0	859.7	865.9	0.00	0.00	
6,300.0	8.77	96.83	6,233.3	-104.8	874.9	881.1	0.00	0.00	
6,400.0	8.77	96.83	6,332.1	-106.6	890.0	896.4	0.00	0.00	
6,500.0	8.77	96.83	6,431.0	-108.4	905.1	911.6	0.00	0.00	
6,534.8	8.77	96.83	6,465.4	-109.0	910.4	916.9	0.00	0.00	Start Drop -2.00
6,600.0	7.46	96.83	6,529.9	-110.1	919.5	926.1	2.00	-2.00	
6,700.0	5.46	96.83	6,629.3	-111.5	930.7	937.4	2.00	-2.00	
6,800.0	3.46	96.83	6,729.0	-112.4	938.4	945.1	2.00	-2.00	
6,900.0	1.46	96.83	6,828.9	-112.9	942.7	949.4	2.00	-2.00	
6,973.1	0.00	0.00	6,902.0	-113.0	943.6	950.4	2.00	-2.00	Start 1891.0 hold at 6973.1 MD
7,000.0	0.00	0.00	6,928.9	-113.0	943.6	950.4	0.00	0.00	
7,073.1	0.00	0.00	7,002.0	-113.0	943.6	950.4	0.00	0.00	TOP_GAS.MBL (SSTVD)
7,100.0	0.00	0.00	7,028.9	-113.0	943.6	950.4	0.00	0.00	
7,200.0	0.00	0.00	7,128.9	-113.0	943.6	950.4	0.00	0.00	
7,300.0	0.00	0.00	7,228.9	-113.0	943.6	950.4	0.00	0.00	
7,400.0	0.00	0.00	7,328.9	-113.0	943.6	950.4	0.00	0.00	
7,500.0	0.00	0.00	7,428.9	-113.0	943.6	950.4	0.00	0.00	
7,600.0	0.00	0.00	7,528.9	-113.0	943.6	950.4	0.00	0.00	
7,700.0	0.00	0.00	7,628.9	-113.0	943.6	950.4	0.00	0.00	
7,800.0	0.00	0.00	7,728.9	-113.0	943.6	950.4	0.00	0.00	
7,900.0	0.00	0.00	7,828.9	-113.0	943.6	950.4	0.00	0.00	
8,000.0	0.00	0.00	7,928.9	-113.0	943.6	950.4	0.00	0.00	
8,100.0	0.00	0.00	8,028.9	-113.0	943.6	950.4	0.00	0.00	
8,200.0	0.00	0.00	8,128.9	-113.0	943.6	950.4	0.00	0.00	
8,300.0	0.00	0.00	8,228.9	-113.0	943.6	950.4	0.00	0.00	
8,400.0	0.00	0.00	8,328.9	-113.0	943.6	950.4	0.00	0.00	
8,500.0	0.00	0.00	8,428.9	-113.0	943.6	950.4	0.00	0.00	
8,600.0	0.00	0.00	8,528.9	-113.0	943.6	950.4	0.00	0.00	
8,700.0	0.00	0.00	8,628.9	-113.0	943.6	950.4	0.00	0.00	
8,714.1	0.00	0.00	8,643.0	-113.0	943.6	950.4	0.00	0.00	ROLLINS.MBL (SSTVD)
8,800.0	0.00	0.00	8,728.9	-113.0	943.6	950.4	0.00	0.00	
8,864.1	0.00	0.00	8,793.0	-113.0	943.6	950.4	0.00	0.00	TD at 8864.1 - TD.MBL (SSTVD)

## Planning Report

<b>Database:</b>	USA EDM 5000 Multi Users DB	<b>Local Co-ordinate Reference:</b>	Well PUCKETT 14B-1
<b>Company:</b>	Caerus Oil & Gas	<b>TVD Reference:</b>	30' KB @ 8454.0usft
<b>Project:</b>	Garfield County, CO (UTM 12N)	<b>MD Reference:</b>	30' KB @ 8454.0usft
<b>Site:</b>	S2-T7S-R97W	<b>North Reference:</b>	True
<b>Well:</b>	PUCKETT 14B-1	<b>Survey Calculation Method:</b>	Minimum Curvature
<b>Wellbore:</b>	OH		
<b>Design:</b>	PLAN #1		

Targets									
Target Name	Dip Angle	Dip Dir.	TVD	+N/-S	+E/-W	Northing	Easting	Latitude	Longitude
- hit/miss target	(°)	(°)	(usft)	(usft)	(usft)	(usft)	(usft)		
- Shape									
PUCKETT 14B-1 PBHL	0.00	0.00	8,793.0	-113.0	943.6	14,345,570.00	2,437,700.00	39.470022	-108.175093
- plan hits target center									
- Circle (radius 50.0)									

Formations						
Measured Depth	Vertical Depth	Name	Lithology	Dip	Dip Direction	
(usft)	(usft)			(°)	(°)	
5,858.5	5,797.0	OHIO_CREEK.MBL (SSTVD)		0.00		
6,132.7	6,068.0	WILLIAMS_FORK.MBL (SSTVD)		0.00		
7,073.1	7,002.0	TOP_GAS.MBL (SSTVD)		0.00		
8,714.1	8,643.0	ROLLINS.MBL (SSTVD)		0.00		
8,864.1	8,793.0	TD.MBL (SSTVD)		0.00		

Plan Annotations					
Measured Depth	Vertical Depth	Local Coordinates			
(usft)	(usft)	+N/-S	+E/-W	Comment	
(usft)	(usft)	(usft)	(usft)		
300.0	300.0	0.0	0.0	Start Build 2.00	
738.3	736.6	-4.0	33.2	Start 5796.5 hold at 738.3 MD	
6,534.8	6,465.4	-109.0	910.4	Start Drop -2.00	
6,973.1	6,902.0	-113.0	943.6	Start 1891.0 hold at 6973.1 MD	
8,864.1	8,793.0	-113.0	943.6	TD at 8864.1	