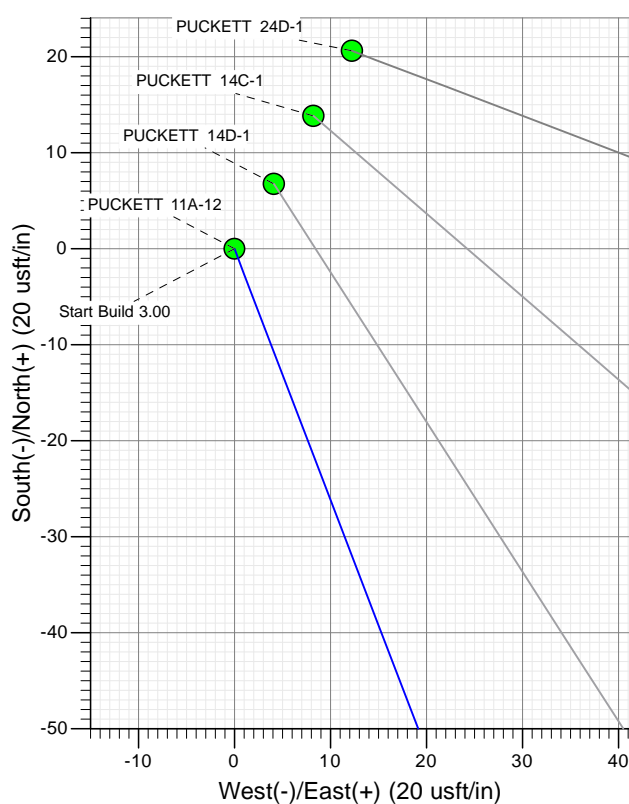
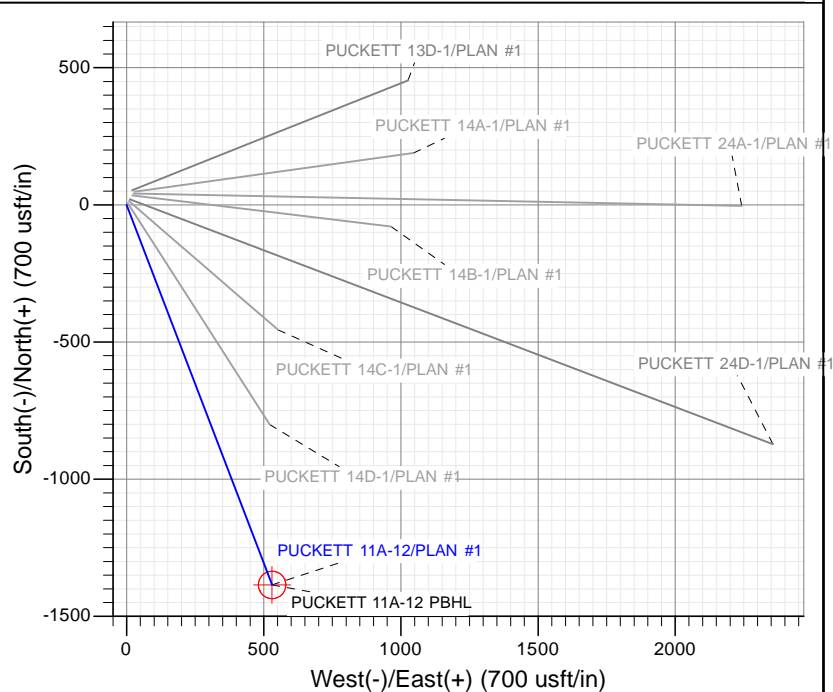
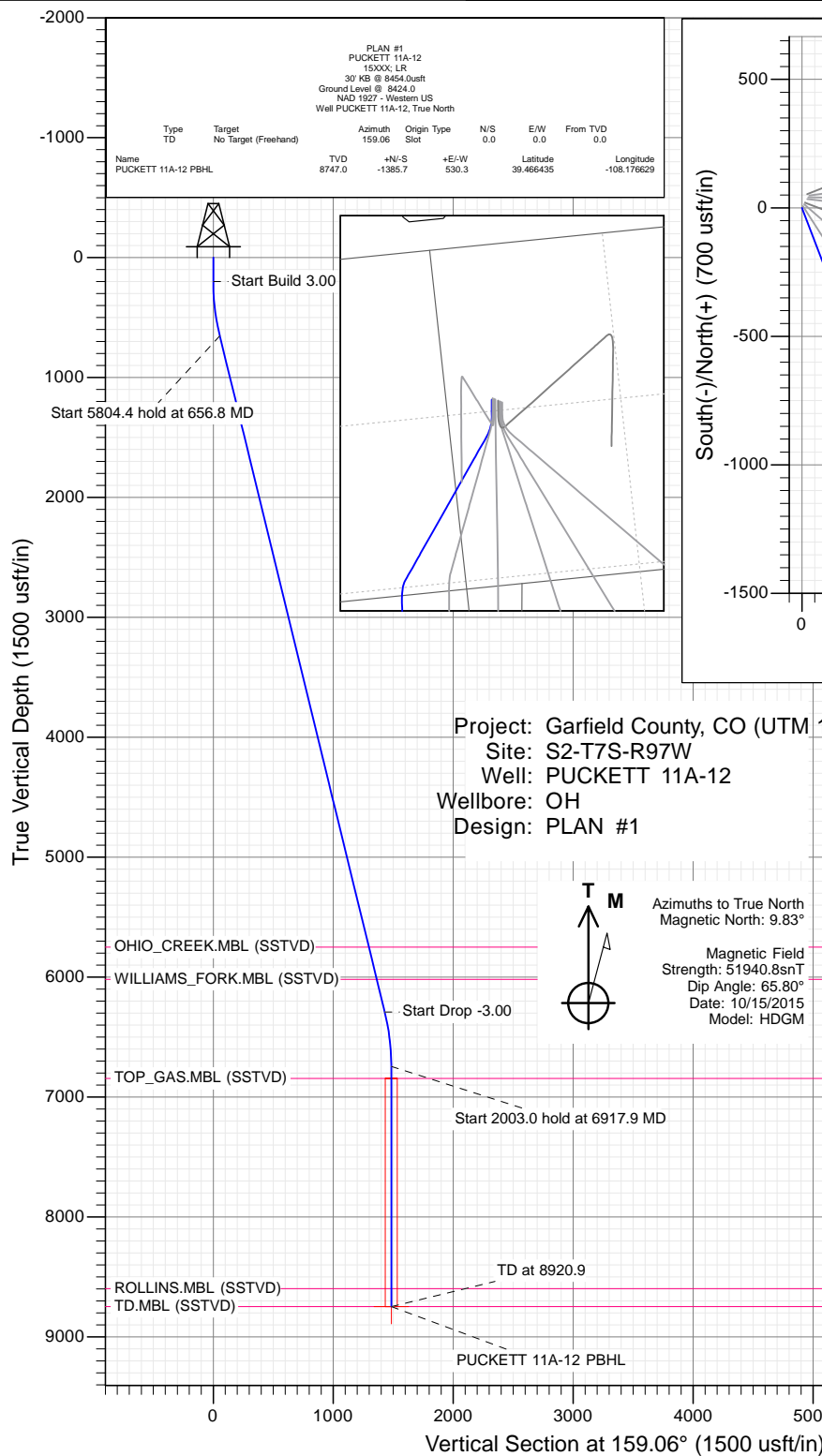




# SECTION DETAILS

Sec	MD	Inc	Azi	TVD	+N/-S	+E/-W	Dleg	TFace	VSect	Target
1	0.0	0.00	0.00	0.0	0.0	0.0	0.00	0.00	0.0	
2	200.0	0.00	0.00	200.0	0.0	0.0	0.00	0.00	0.0	
3	656.8	13.70	159.06	652.4	-50.8	19.4	3.00	159.06	54.4	
4	6461.1	13.70	159.06	6291.6	-1334.9	510.8	0.00	0.00	1429.3	
5	6917.9	0.00	0.00	6744.0	-1385.7	530.3	3.00	180.00	1483.7	
6	8920.9	0.00	0.00	8747.0	-1385.7	530.3	0.00	0.00	1483.7	PUCKETT 11A-12 PBHL



## WELL DETAILS: PUCKETT 11A-12

+N/-S	+E/-W	Northing	Easting	Ground Level:	8424.0	Latitude	Longitude
0.0	0.0	14345618.40	2436734.00			39.470238	-108.178506



## Planning Report

<b>Database:</b>	USA EDM 5000 Multi Users DB	<b>Local Co-ordinate Reference:</b>	Well PUCKETT 11A-12
<b>Company:</b>	Caerus Oil & Gas	<b>TVD Reference:</b>	30' KB @ 8454.0usft
<b>Project:</b>	Garfield County, CO (UTM 12N)	<b>MD Reference:</b>	30' KB @ 8454.0usft
<b>Site:</b>	S2-T7S-R97W	<b>North Reference:</b>	True
<b>Well:</b>	PUCKETT 11A-12	<b>Survey Calculation Method:</b>	Minimum Curvature
<b>Wellbore:</b>	OH		
<b>Design:</b>	PLAN #1		

<b>Project</b>	Garfield County, CO (UTM 12N)		
<b>Map System:</b>	Universal Transverse Mercator (US Survey Feet)	<b>System Datum:</b>	Mean Sea Level
<b>Geo Datum:</b>	NAD 1927 - Western US		
<b>Map Zone:</b>	Zone 12N (114 W to 108 W)		

Site		S2-T7S-R97W			
Site Position:		Northing:	14,345,665.30 usft	Latitude:	39.470366
From:	Map	Easting:	2,436,748.30 usft	Longitude:	-108.178450
Position Uncertainty:	0.0 usft	Slot Radius:	13-3/16 "	Grid Convergence:	1.79 °

Well	PUCKETT 11A-12					
Well Position	+N/-S	0.0 usft	Northing:	14,345,618.40 usft	Latitude:	39.470238
	+E/-W	0.0 usft	Easting:	2,436,734.00 usft	Longitude:	-108.178506
Position Uncertainty		0.0 usft	Wellhead Elevation:	0.0 usft	Ground Level:	8,424.0 usft

<b>Wellbore</b>	OH				
<b>Magnetics</b>	<b>Model Name</b>	<b>Sample Date</b>	<b>Declination (°)</b>	<b>Dip Angle (°)</b>	<b>Field Strength (nT)</b>
	HDGM	10/15/2015	9.83	65.80	51,941

<b>Design</b>	PLAN #1			
<b>Audit Notes:</b>				
<b>Version:</b>	<b>Phase:</b>	PLAN	<b>Tie On Depth:</b>	0.0
<b>Vertical Section:</b>	<b>Depth From (TVD) (usft)</b>	<b>+N/-S (usft)</b>	<b>+E/-W (usft)</b>	<b>Direction (°)</b>
	0.0	0.0	0.0	159.06

<b>Plan Sections</b>										
Measured Depth (usft)	Inclination (°)	Azimuth (°)	Vertical Depth (usft)	+N/-S (usft)	+E/-W (usft)	Dogleg Rate (°/100usft)	Build Rate (°/100usft)	Turn Rate (°/100usft)	TFO (°)	Target
0.0	0.00	0.00	0.0	0.0	0.0	0.00	0.00	0.00	0.00	
200.0	0.00	0.00	200.0	0.0	0.0	0.00	0.00	0.00	0.00	
656.8	13.70	159.06	652.4	-50.8	19.4	3.00	3.00	0.00	159.06	
6,461.1	13.70	159.06	6,291.6	-1,334.9	510.8	0.00	0.00	0.00	0.00	
6,917.9	0.00	0.00	6,744.0	-1,385.7	530.3	3.00	-3.00	0.00	180.00	
8,920.9	0.00	0.00	8,747.0	-1,385.7	530.3	0.00	0.00	0.00	0.00	PUCKETT 11A-12 PB

# Planning Report

<b>Database:</b>	USA EDM 5000 Multi Users DB	<b>Local Co-ordinate Reference:</b>	Well PUCKETT 11A-12
<b>Company:</b>	Caerus Oil & Gas	<b>TVD Reference:</b>	30' KB @ 8454.0usft
<b>Project:</b>	Garfield County, CO (UTM 12N)	<b>MD Reference:</b>	30' KB @ 8454.0usft
<b>Site:</b>	S2-T7S-R97W	<b>North Reference:</b>	True
<b>Well:</b>	PUCKETT 11A-12	<b>Survey Calculation Method:</b>	Minimum Curvature
<b>Wellbore:</b>	OH		
<b>Design:</b>	PLAN #1		

## Planned Survey

Measured Depth (usft)	Inclination (°)	Azimuth (°)	Vertical Depth (usft)	+N/-S (usft)	+E/-W (usft)	Vertical Section (usft)	Dogleg Rate (°/100usft)	Build Rate (°/100u)	Comments / Formations
0.0	0.00	0.00	0.0	0.0	0.0	0.0	0.00	0.00	
100.0	0.00	0.00	100.0	0.0	0.0	0.0	0.00	0.00	
200.0	0.00	0.00	200.0	0.0	0.0	0.0	0.00	0.00	Start Build 3.00
300.0	3.00	159.06	300.0	-2.4	0.9	2.6	3.00	3.00	
400.0	6.00	159.06	399.6	-9.8	3.7	10.5	3.00	3.00	
500.0	9.00	159.06	498.8	-22.0	8.4	23.5	3.00	3.00	
600.0	12.00	159.06	597.1	-39.0	14.9	41.7	3.00	3.00	
656.8	13.70	159.06	652.4	-50.8	19.4	54.4	3.00	3.00	Start 5804.4 hold at 656.8 MD
700.0	13.70	159.06	694.4	-60.3	23.1	64.6	0.00	0.00	
800.0	13.70	159.06	791.6	-82.5	31.6	88.3	0.00	0.00	
900.0	13.70	159.06	888.7	-104.6	40.0	112.0	0.00	0.00	
1,000.0	13.70	159.06	985.9	-126.7	48.5	135.7	0.00	0.00	
1,100.0	13.70	159.06	1,083.0	-148.8	57.0	159.4	0.00	0.00	
1,200.0	13.70	159.06	1,180.2	-171.0	65.4	183.0	0.00	0.00	
1,300.0	13.70	159.06	1,277.4	-193.1	73.9	206.7	0.00	0.00	
1,400.0	13.70	159.06	1,374.5	-215.2	82.4	230.4	0.00	0.00	
1,500.0	13.70	159.06	1,471.7	-237.3	90.8	254.1	0.00	0.00	
1,600.0	13.70	159.06	1,568.8	-259.4	99.3	277.8	0.00	0.00	
1,700.0	13.70	159.06	1,666.0	-281.6	107.8	301.5	0.00	0.00	
1,800.0	13.70	159.06	1,763.1	-303.7	116.2	325.2	0.00	0.00	
1,900.0	13.70	159.06	1,860.3	-325.8	124.7	348.9	0.00	0.00	
2,000.0	13.70	159.06	1,957.4	-347.9	133.1	372.6	0.00	0.00	
2,100.0	13.70	159.06	2,054.6	-370.1	141.6	396.2	0.00	0.00	
2,200.0	13.70	159.06	2,151.7	-392.2	150.1	419.9	0.00	0.00	
2,300.0	13.70	159.06	2,248.9	-414.3	158.5	443.6	0.00	0.00	
2,400.0	13.70	159.06	2,346.0	-436.4	167.0	467.3	0.00	0.00	
2,500.0	13.70	159.06	2,443.2	-458.6	175.5	491.0	0.00	0.00	
2,600.0	13.70	159.06	2,540.3	-480.7	183.9	514.7	0.00	0.00	
2,700.0	13.70	159.06	2,637.5	-502.8	192.4	538.4	0.00	0.00	
2,800.0	13.70	159.06	2,734.7	-524.9	200.9	562.1	0.00	0.00	
2,900.0	13.70	159.06	2,831.8	-547.1	209.3	585.7	0.00	0.00	
3,000.0	13.70	159.06	2,929.0	-569.2	217.8	609.4	0.00	0.00	
3,100.0	13.70	159.06	3,026.1	-591.3	226.3	633.1	0.00	0.00	
3,200.0	13.70	159.06	3,123.3	-613.4	234.7	656.8	0.00	0.00	
3,300.0	13.70	159.06	3,220.4	-635.6	243.2	680.5	0.00	0.00	
3,400.0	13.70	159.06	3,317.6	-657.7	251.7	704.2	0.00	0.00	
3,500.0	13.70	159.06	3,414.7	-679.8	260.1	727.9	0.00	0.00	
3,600.0	13.70	159.06	3,511.9	-701.9	268.6	751.6	0.00	0.00	
3,700.0	13.70	159.06	3,609.0	-724.0	277.1	775.3	0.00	0.00	
3,800.0	13.70	159.06	3,706.2	-746.2	285.5	798.9	0.00	0.00	
3,900.0	13.70	159.06	3,803.3	-768.3	294.0	822.6	0.00	0.00	
4,000.0	13.70	159.06	3,900.5	-790.4	302.5	846.3	0.00	0.00	
4,100.0	13.70	159.06	3,997.7	-812.5	310.9	870.0	0.00	0.00	
4,200.0	13.70	159.06	4,094.8	-834.7	319.4	893.7	0.00	0.00	
4,300.0	13.70	159.06	4,192.0	-856.8	327.9	917.4	0.00	0.00	
4,400.0	13.70	159.06	4,289.1	-878.9	336.3	941.1	0.00	0.00	
4,500.0	13.70	159.06	4,386.3	-901.0	344.8	964.8	0.00	0.00	
4,600.0	13.70	159.06	4,483.4	-923.2	353.3	988.4	0.00	0.00	
4,700.0	13.70	159.06	4,580.6	-945.3	361.7	1,012.1	0.00	0.00	
4,800.0	13.70	159.06	4,677.7	-967.4	370.2	1,035.8	0.00	0.00	
4,900.0	13.70	159.06	4,774.9	-989.5	378.7	1,059.5	0.00	0.00	
5,000.0	13.70	159.06	4,872.0	-1,011.7	387.1	1,083.2	0.00	0.00	

# Planning Report

<b>Database:</b>	USA EDM 5000 Multi Users DB	<b>Local Co-ordinate Reference:</b>	Well PUCKETT 11A-12
<b>Company:</b>	Caerus Oil & Gas	<b>TVD Reference:</b>	30' KB @ 8454.0usft
<b>Project:</b>	Garfield County, CO (UTM 12N)	<b>MD Reference:</b>	30' KB @ 8454.0usft
<b>Site:</b>	S2-T7S-R97W	<b>North Reference:</b>	True
<b>Well:</b>	PUCKETT 11A-12	<b>Survey Calculation Method:</b>	Minimum Curvature
<b>Wellbore:</b>	OH		
<b>Design:</b>	PLAN #1		

Planned Survey									
Measured Depth (usft)	Inclination (°)	Azimuth (°)	Vertical Depth (usft)	+N/-S (usft)	+E/-W (usft)	Vertical Section (usft)	Dogleg Rate (°/100usft)	Build Rate (°/100u)	Comments / Formations
5,100.0	13.70	159.06	4,969.2	-1,033.8	395.6	1,106.9	0.00	0.00	
5,200.0	13.70	159.06	5,066.3	-1,055.9	404.1	1,130.6	0.00	0.00	
5,300.0	13.70	159.06	5,163.5	-1,078.0	412.5	1,154.3	0.00	0.00	
5,400.0	13.70	159.06	5,260.7	-1,100.2	421.0	1,178.0	0.00	0.00	
5,500.0	13.70	159.06	5,357.8	-1,122.3	429.5	1,201.6	0.00	0.00	
5,600.0	13.70	159.06	5,455.0	-1,144.4	437.9	1,225.3	0.00	0.00	
5,700.0	13.70	159.06	5,552.1	-1,166.5	446.4	1,249.0	0.00	0.00	
5,800.0	13.70	159.06	5,649.3	-1,188.6	454.9	1,272.7	0.00	0.00	
5,900.0	13.70	159.06	5,746.4	-1,210.8	463.3	1,296.4	0.00	0.00	
5,903.7	13.70	159.06	5,750.0	-1,211.6	463.6	1,297.3	0.00	0.00	OHIO_CREEK.MBL (SSTVD)
6,000.0	13.70	159.06	5,843.6	-1,232.9	471.8	1,320.1	0.00	0.00	
6,100.0	13.70	159.06	5,940.7	-1,255.0	480.3	1,343.8	0.00	0.00	
6,179.5	13.70	159.06	6,018.0	-1,272.6	487.0	1,362.6	0.00	0.00	WILLIAMS_FORK.MBL (SSTVD)
6,200.0	13.70	159.06	6,037.9	-1,277.1	488.7	1,367.5	0.00	0.00	
6,300.0	13.70	159.06	6,135.0	-1,299.3	497.2	1,391.2	0.00	0.00	
6,400.0	13.70	159.06	6,232.2	-1,321.4	505.7	1,414.8	0.00	0.00	
6,461.1	13.70	159.06	6,291.6	-1,334.9	510.8	1,429.3	0.00	0.00	Start Drop -3.00
6,500.0	12.54	159.06	6,329.4	-1,343.2	514.0	1,438.1	3.00	-3.00	
6,600.0	9.54	159.06	6,427.6	-1,361.0	520.8	1,457.3	3.00	-3.00	
6,700.0	6.54	159.06	6,526.6	-1,374.1	525.8	1,471.3	3.00	-3.00	
6,800.0	3.54	159.06	6,626.2	-1,382.3	529.0	1,480.0	3.00	-3.00	
6,900.0	0.54	159.06	6,726.1	-1,385.6	530.2	1,483.6	3.00	-3.00	
6,917.9	0.00	0.00	6,744.0	-1,385.7	530.3	1,483.7	3.00	-3.00	Start 2003.0 hold at 6917.9 MD
7,000.0	0.00	0.00	6,826.1	-1,385.7	530.3	1,483.7	0.00	0.00	
7,017.9	0.00	0.00	6,844.0	-1,385.7	530.3	1,483.7	0.00	0.00	TOP_GAS.MBL (SSTVD)
7,100.0	0.00	0.00	6,926.1	-1,385.7	530.3	1,483.7	0.00	0.00	
7,200.0	0.00	0.00	7,026.1	-1,385.7	530.3	1,483.7	0.00	0.00	
7,300.0	0.00	0.00	7,126.1	-1,385.7	530.3	1,483.7	0.00	0.00	
7,400.0	0.00	0.00	7,226.1	-1,385.7	530.3	1,483.7	0.00	0.00	
7,500.0	0.00	0.00	7,326.1	-1,385.7	530.3	1,483.7	0.00	0.00	
7,600.0	0.00	0.00	7,426.1	-1,385.7	530.3	1,483.7	0.00	0.00	
7,700.0	0.00	0.00	7,526.1	-1,385.7	530.3	1,483.7	0.00	0.00	
7,800.0	0.00	0.00	7,626.1	-1,385.7	530.3	1,483.7	0.00	0.00	
7,900.0	0.00	0.00	7,726.1	-1,385.7	530.3	1,483.7	0.00	0.00	
8,000.0	0.00	0.00	7,826.1	-1,385.7	530.3	1,483.7	0.00	0.00	
8,100.0	0.00	0.00	7,926.1	-1,385.7	530.3	1,483.7	0.00	0.00	
8,200.0	0.00	0.00	8,026.1	-1,385.7	530.3	1,483.7	0.00	0.00	
8,300.0	0.00	0.00	8,126.1	-1,385.7	530.3	1,483.7	0.00	0.00	
8,400.0	0.00	0.00	8,226.1	-1,385.7	530.3	1,483.7	0.00	0.00	
8,500.0	0.00	0.00	8,326.1	-1,385.7	530.3	1,483.7	0.00	0.00	
8,600.0	0.00	0.00	8,426.1	-1,385.7	530.3	1,483.7	0.00	0.00	
8,700.0	0.00	0.00	8,526.1	-1,385.7	530.3	1,483.7	0.00	0.00	
8,770.9	0.00	0.00	8,597.0	-1,385.7	530.3	1,483.7	0.00	0.00	ROLLINS.MBL (SSTVD)
8,800.0	0.00	0.00	8,626.1	-1,385.7	530.3	1,483.7	0.00	0.00	
8,900.0	0.00	0.00	8,726.1	-1,385.7	530.3	1,483.7	0.00	0.00	
8,920.9	0.00	0.00	8,747.0	-1,385.7	530.3	1,483.7	0.00	0.00	TD at 8920.9 - TD.MBL (SSTVD)

## Planning Report

<b>Database:</b>	USA EDM 5000 Multi Users DB	<b>Local Co-ordinate Reference:</b>	Well PUCKETT 11A-12
<b>Company:</b>	Caerus Oil & Gas	<b>TVD Reference:</b>	30' KB @ 8454.0usft
<b>Project:</b>	Garfield County, CO (UTM 12N)	<b>MD Reference:</b>	30' KB @ 8454.0usft
<b>Site:</b>	S2-T7S-R97W	<b>North Reference:</b>	True
<b>Well:</b>	PUCKETT 11A-12	<b>Survey Calculation Method:</b>	Minimum Curvature
<b>Wellbore:</b>	OH		
<b>Design:</b>	PLAN #1		

Targets									
Target Name									
- hit/miss target	Dip Angle	Dip Dir.	TVD	+N/-S	+E/-W	Northing	Easting	Latitude	Longitude
- Shape	(°)	(°)	(usft)	(usft)	(usft)	(usft)	(usft)		
PUCKETT 11A-12 PBHL	0.00	0.00	8,747.0	-1,385.7	530.3	14,344,250.00	2,437,307.40	39.466435	-108.176629
- plan hits target center									
- Circle (radius 50.0)									

Formations						
Measured Depth	Vertical Depth	Name	Lithology	Dip	Dip Direction	
(usft)	(usft)			(°)	(°)	
5,903.7	5,750.0	OHIO_CREEK.MBL (SSTVD)		0.00		
6,179.5	6,018.0	WILLIAMS_FORK.MBL (SSTVD)		0.00		
7,017.9	6,844.0	TOP_GAS.MBL (SSTVD)		0.00		
8,770.9	8,597.0	ROLLINS.MBL (SSTVD)		0.00		
8,920.9	8,747.0	TD.MBL (SSTVD)		0.00		

Plan Annotations					
Measured Depth	Vertical Depth	Local Coordinates			
(usft)	(usft)	+N/-S	+E/-W	Comment	
(usft)	(usft)	(usft)	(usft)		
200.0	200.0	0.0	0.0	Start Build 3.00	
656.8	652.4	-50.8	19.4	Start 5804.4 hold at 656.8 MD	
6,461.1	6,291.6	-1,334.9	510.8	Start Drop -3.00	
6,917.9	6,744.0	-1,385.7	530.3	Start 2003.0 hold at 6917.9 MD	
8,920.9	8,747.0	-1,385.7	530.3	TD at 8920.9	