

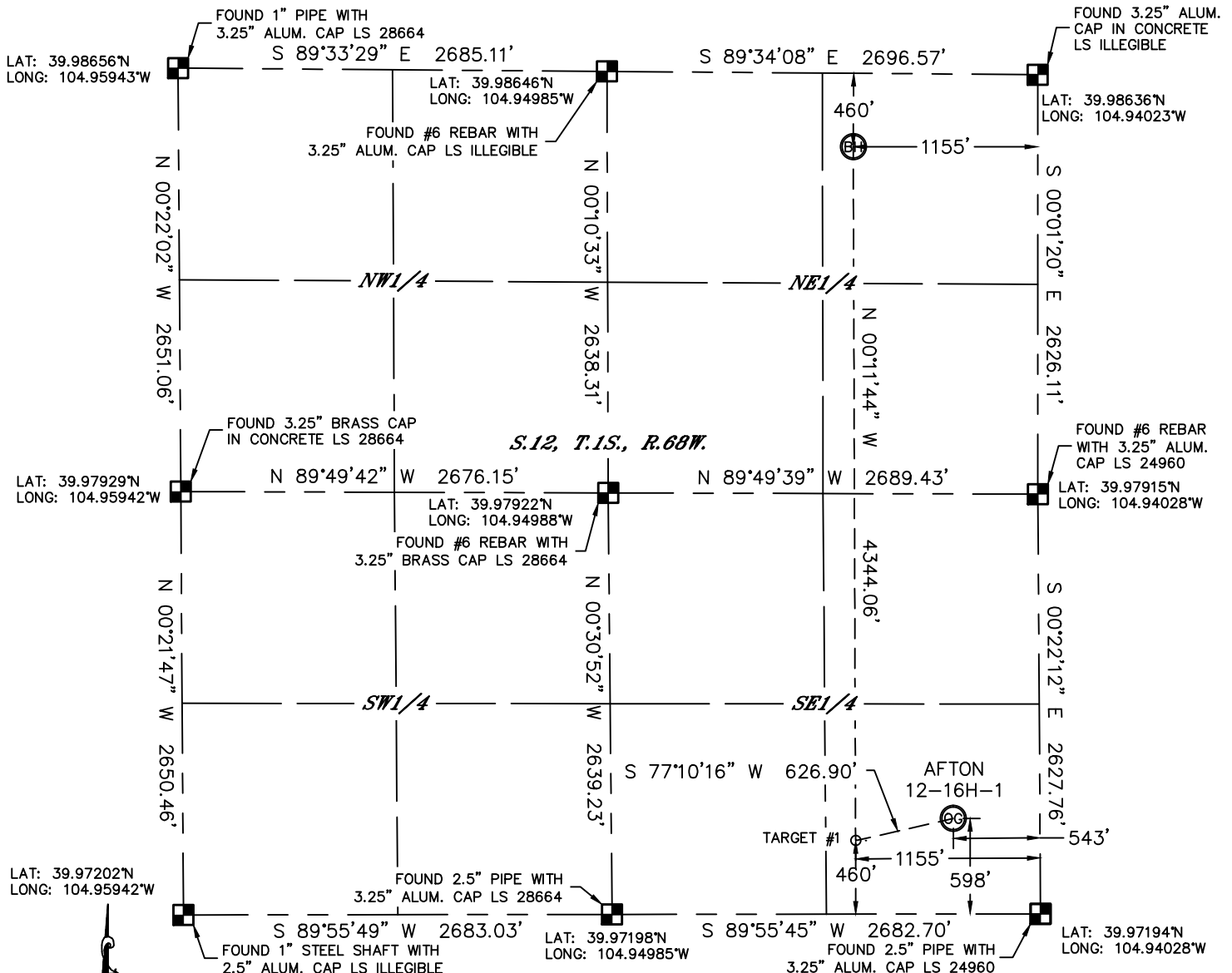


Lat40°, Inc. 6250 W. 10th Street, Unit 2, Greeley, CO 970-515-5294

WELL LOCATION CERTIFICATE

THIS MAP DOES NOT REPRESENT A BOUNDARY SURVEY

SECTION: 12
TOWNSHIP: 1S
RANGE: 68W



In accordance with a request from Clay Duke with MENDELL FINISTERRE II, LLC Lat40°, Inc. has determined the surface location of the AFTON 12-16H-1 to be 598' from the SOUTH line and 543' from the EAST line and the bottom hole to be 460' from the NORTH line and 1155' from the EAST line as measured at right angles from the section lines of Section 12, Township 1 South, Range 68 West of the Sixth Principal Meridian, County of Adams, State of Colorado.

I hereby state that this Well Location Certificate was prepared by me, or under my direct supervision, that the fieldwork was completed on 7/1/2013, for and on behalf of MENDELL FINISTERRE II, LLC. That this is not a Land Survey Plat or an Improvement Survey Plat, and that it is not to be relied upon for establishment of fence, building, or other future improvement lines.

SURFACE LOCATION
LAT: 39.97359°N
LONG: 104.94222°W
PDOP: 1.9
ELEV: 5153'
1/4,1/4: SE1/4SE1/4

BOTTOM HOLE
LAT: 39.98514°N
LONG: 104.94436°W

TARGET #1
LAT: 39.97322°N
LONG: 104.94440°W

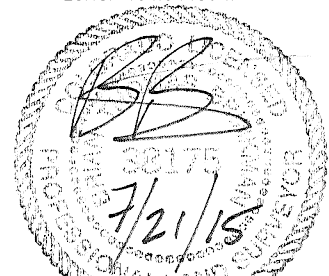
NOTE:

- 1) Bearings shown are Grid Bearings of the Colorado State Plane Coordinate System, North Zone, North American Datum 1983/2007. The lineal dimensions as contained herein are based upon the "U.S. Survey Foot."
 - 2) Ground elevations are based on an observed GPS elevation (NAVD 1988 DATUM).
 - 3) IMPROVEMENTS: See LOCATION DRAWING for all visible improvements within 400' of disturbed area.
 - 4) SURFACE USE: PASTURE
 - 5) INSTRUMENT OPERATOR: ADAM KELLY
- NEAREST CULTURAL ITEMS:
BUILDING: ±320' SE
BUILDING UNIT: ±430' SE
HIGH OCCUPANCY BUILDING UNIT: ±3230' SW
DESIGNATED OUTSIDE ACTIVITY AREA: 5280'+
PUBLIC ROAD: ±530' E (COLORADO BLVD.)
ABOVEGROUND UTILITY: ±191' S
RAILROAD: ±1450' NW
PROPERTY LINE: ±133' S

LEGEND

- = ALIQUOT MONUMENT AS DESCRIBED
○ = CALCULATED POSITION

Brian T. Brinkman—On behalf of Lat40°, Inc.
Colorado Licensed Professional
Land Surveyor No. 38175
DATE: 7/20/2015
PROJECT#: 2013026



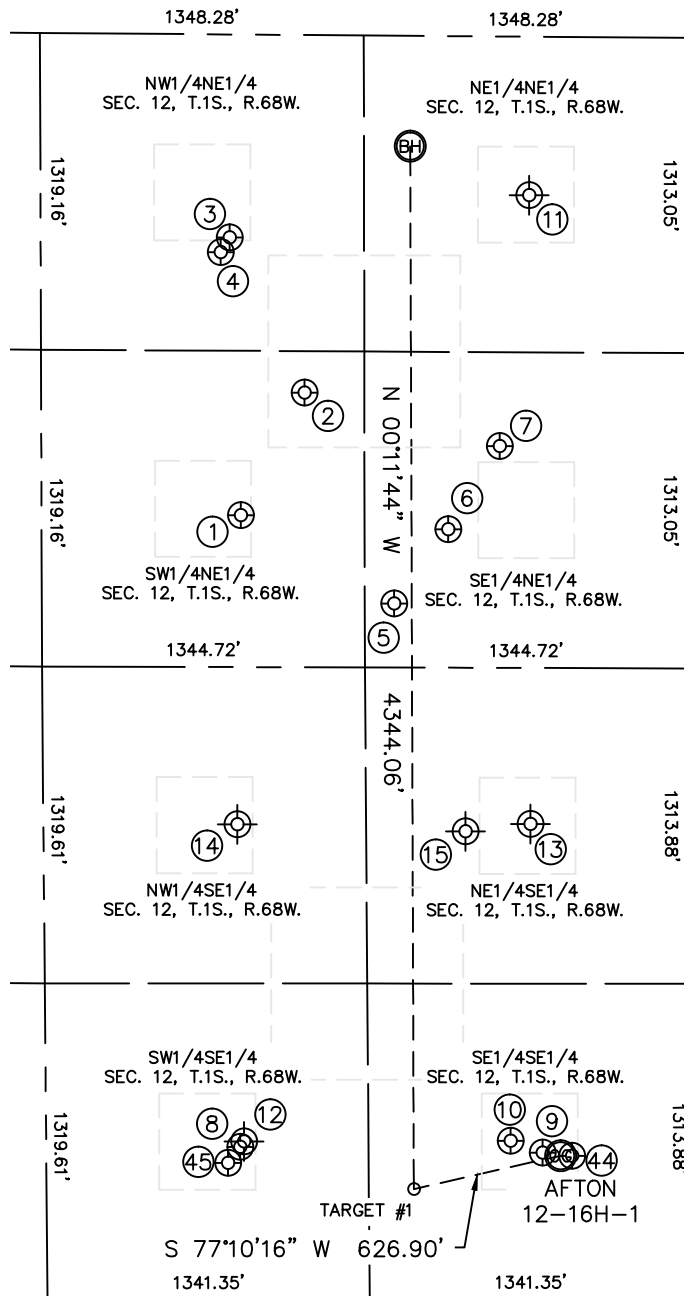


Lat40°, Inc. 6250 W. 10th Street, Unit 2, Greeley, CO 970-515-5294

SITE SKETCH

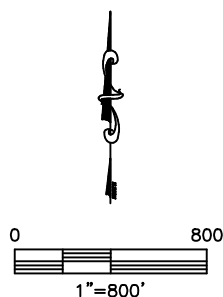
AFTON 12-16H-1

SECTION: 12
TOWNSHIP: 1S
RANGE: 68W



WELL NO.	WELL NAME	SHL FOOTAGE		SHL LAT°	SHL LONG°	PDOP	ELEV (FT.)	1/4/1/4
1	CROFF 12-5	2002	FNL	39.98094	-104.94691	2.2	5082	SWNE
2	LENART S-1	1489	FNL	39.98233	-104.94595	3.7	5083	SWNE
3	TUDEX REINHOLT NC4	846	FNL	39.98411	-104.94705	3.6	5074	NWNE
4	REINHOLT 12-6	908	FNL	39.98394	-104.94719	1.6	5076	NWNE
5	TUDEX BRINK S-2	2366	FNL	39.97991	-104.94464	2.9	5125	SENE
6	ELMS 12-4	2054	FNL	39.98076	-104.94383	2.1	5116	SENE
7	ELMS 2	1706	FNL	39.98171	-104.94306	2.0	5115	SENE
8	RUBY 2	637	FSL	39.97371	-104.94697	1.7	5150	SWSE
9	PULIS 12-8	611	FSL	39.97363	-104.94249	2.1	5154	SESE
10	BARLOW UNIT 12-16B	661	FSL	39.97377	-104.94296	2.0	5151	SESE
11	SEVENS 1	660	FNL	39.98461	-104.94250	NA	5082	NENE
12	MALLO 1	660	FSL	39.97379	-104.94683	NA	5144	SWSE
13	DARLOW 12-2	1980	FSL	39.97740	-104.94351	NA	5152	NESE
14	BELLIGER 12-7	1980	FSL	39.97742	-104.94687	NA	5115	NWSE
15	BARKER 12-9	1950	FSL	39.97732	-104.94352	NA	5144	NESE
44	AFTON 12-16H-4	597	FSL	39.97359	-104.94204	2.3	5153	SESE
45	ALICIA 12-15H-5N	570	FSL	39.97353	-104.94716	1.8	5150	SWSE

NOTE: THE ABANDONED WELL DATA SHOWN IN RED ABOVE WAS OBTAINED FROM COGCC SCOUT CARDS.



DATE: 7/20/2015
PROJECT#: 2013026