

# Noble Energy Inc.- Weld County, CO (Grid North)

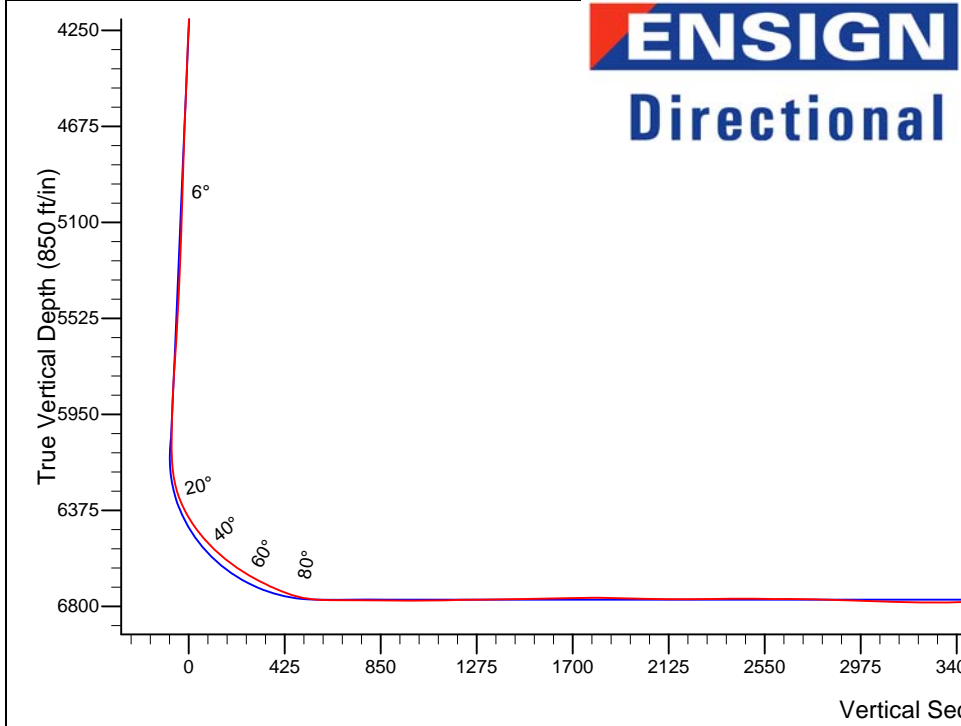
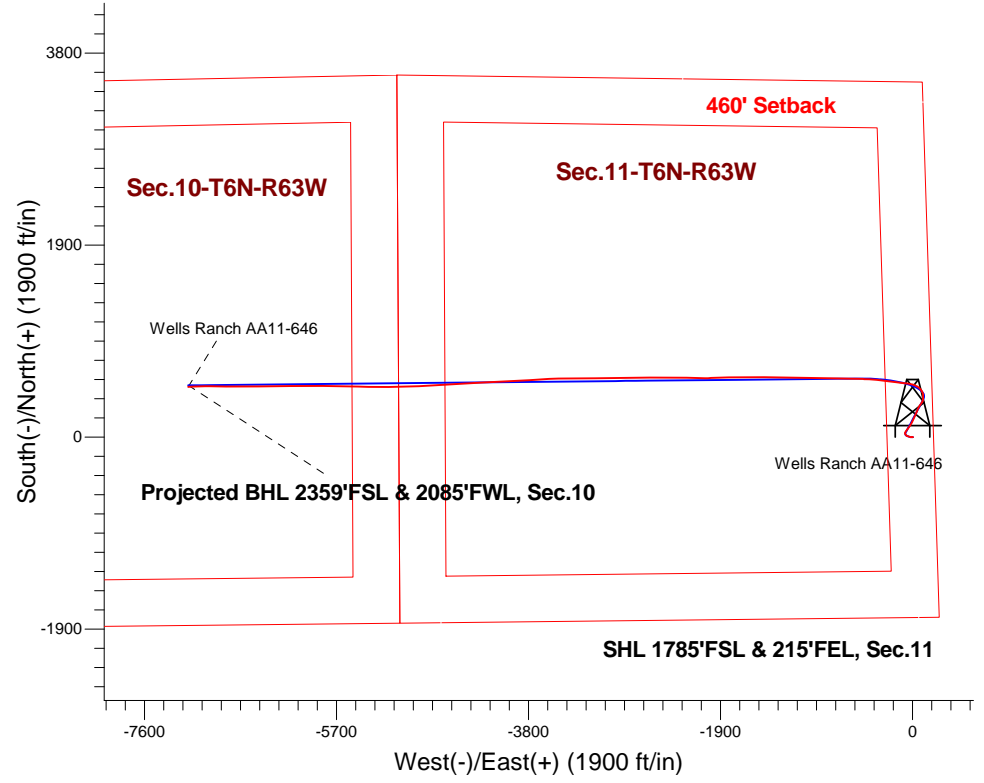
Well Name: **Wells Ranch AA11-646**

Surface Location: Wells Ranch AA11 Pad Sec.11-T6N-R63W  
 North American Datum 1983, US State Plane 1983, Colorado Northern Zone  
 Ground Elevation: 4855.0

+N/-S	+E/-W	Northing	Easting	Latitude	Longitude	Slot
0.0	0.0	1426445.84	3307272.72	40.498740	-104.395090	
H&P 326 RKB - 30' WELL @ 4885.0ft (H&P 326 RKB - 30')						

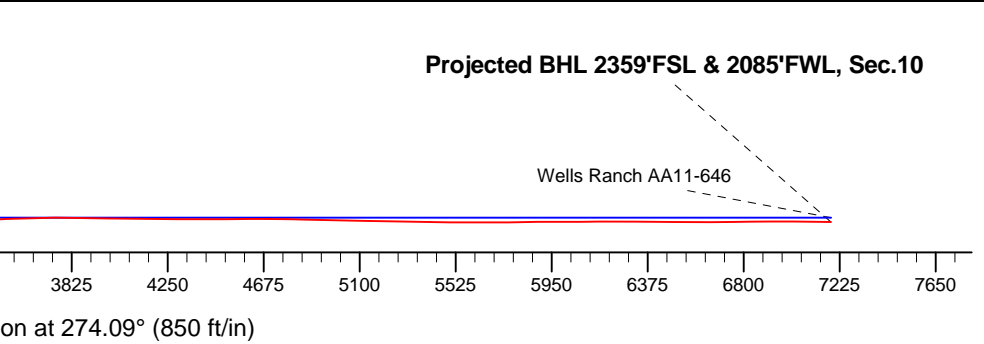
## FINAL SURVEY

Projected Bottom Hole Location  
 13806'MD 6789'TVD 498'N & 7168'W of SHL  
 89.1 degree Incl @ 268.1 degree AZM



Wells Ranch AA11 Pad Sec.11-T6N-R63W Wells Ranch AA11-646 Wellbore #1 13:07, June 04 2015	<b>ANNOTATIONS</b>
	No annotation data is available.

<b>LEGEND</b>
<ul style="list-style-type: none"> <li>Wells Ranch AA11-646, Wellbore #1, Plan B - Rev 1 V0</li> <li>Wellbore #1</li> </ul>





# **Noble Energy Inc.- Weld County, CO (Grid North)**

**Sec.11-T6N-R63W**

**Wells Ranch AA11 Pad Sec.11-T6N-R63W**

**Wells Ranch AA11-646**

**Wellbore #1**

**Design: Wellbore #1**

05-123-41251

## **Standard Survey Report**

**04 June, 2015**

<b>Company:</b>	Noble Energy Inc.- Weld County, CO (Grid North)	<b>Local Co-ordinate Reference:</b>	Well Wells Ranch AA11-646
<b>Project:</b>	Sec.11-T6N-R63W	<b>TVD Reference:</b>	WELL @ 4885.0ft (H&P 326 RKB - 30')
<b>Site:</b>	Wells Ranch AA11 Pad Sec.11-T6N-R63W	<b>MD Reference:</b>	WELL @ 4885.0ft (H&P 326 RKB - 30')
<b>Well:</b>	Wells Ranch AA11-646	<b>North Reference:</b>	Grid
<b>Wellbore:</b>	Wellbore #1	<b>Survey Calculation Method:</b>	Minimum Curvature
<b>Design:</b>	Wellbore #1	<b>Database:</b>	EDM 2003.21 Single User Db

<b>Project</b>	Sec.11-T6N-R63W, Weld County, CO		
<b>Map System:</b>	US State Plane 1983	<b>System Datum:</b>	Mean Sea Level
<b>Geo Datum:</b>	North American Datum 1983		Using Well Reference Point
<b>Map Zone:</b>	Colorado Northern Zone		Using geodetic scale factor

<b>Site</b>	Wells Ranch AA11 Pad Sec.11-T6N-R63W				
<b>Site Position:</b>		<b>Northing:</b>	1,426,445.84 ft	<b>Latitude:</b>	40.498740
<b>From:</b>	Lat/Long	<b>Easting:</b>	3,307,272.72 ft	<b>Longitude:</b>	-104.395090
<b>Position Uncertainty:</b>	0.0 ft	<b>Slot Radius:</b>	"	<b>Grid Convergence:</b>	0.71 °

<b>Well</b>	Wells Ranch AA11-646					
<b>Well Position</b>	<b>+N/-S</b>	0.0 ft	<b>Northing:</b>	1,426,445.84 ft	<b>Latitude:</b>	40.498740
	<b>+E/-W</b>	0.0 ft	<b>Easting:</b>	3,307,272.72 ft	<b>Longitude:</b>	-104.395090
<b>Position Uncertainty</b>		0.0 ft	<b>Wellhead Elevation:</b>	ft	<b>Ground Level:</b>	4,855.0 ft

<b>Wellbore</b>	Wellbore #1				
<b>Magnetics</b>	<b>Model Name</b>	<b>Sample Date</b>	<b>Declination (°)</b>	<b>Dip Angle (°)</b>	<b>Field Strength (nT)</b>
	IGRF2010	5/6/2015	8.15	67.05	52,810

<b>Design</b>	Wellbore #1				
<b>Audit Notes:</b>					
<b>Version:</b>	1.0	<b>Phase:</b>	ACTUAL	<b>Tie On Depth:</b>	0.0
<b>Vertical Section:</b>		<b>Depth From (TVD) (ft)</b>	<b>+N/-S (ft)</b>	<b>+E/-W (ft)</b>	<b>Direction (°)</b>
		0.0	0.0	0.0	274.09

<b>Survey Program</b>	Date 6/4/2015				
	<b>From (ft)</b>	<b>To (ft)</b>	<b>Survey (Wellbore)</b>	<b>Tool Name</b>	<b>Description</b>
	90.3	1,819.0	Surface (Wellbore #1)	Flexi-Shot	VES Flexi-Shot Tool
	1,853.0	7,243.0	Curve/Intermediate (Wellbore #1)	MWD	MWD - Standard
	7,337.0	13,806.0	Lateral (Wellbore #1)	MWD	MWD - Standard

<b>Survey</b>										
	<b>Measured Depth (ft)</b>	<b>Inclination (°)</b>	<b>Azimuth (°)</b>	<b>Vertical Depth (ft)</b>	<b>+N/-S (ft)</b>	<b>+E/-W (ft)</b>	<b>Vertical Section (ft)</b>	<b>Dogleg Rate (°/100ft)</b>	<b>Build Rate (°/100ft)</b>	<b>Turn Rate (°/100ft)</b>
	0.0	0.00	0.00	0.0	0.0	0.0	0.0	0.00	0.00	0.00
	90.3	0.26	49.86	90.3	0.1	0.2	-0.1	0.29	0.29	0.00
	182.6	0.24	43.44	182.6	0.4	0.4	-0.4	0.04	-0.02	-6.95
	274.9	0.19	96.56	274.9	0.5	0.7	-0.7	0.21	-0.05	57.55
	367.2	0.17	31.01	367.2	0.6	1.0	-0.9	0.21	-0.02	-71.01
	459.5	0.21	187.77	459.5	0.6	1.0	-1.0	0.40	0.04	169.82
	551.8	0.24	219.49	551.8	0.3	0.9	-0.8	0.14	0.03	34.36
	644.2	0.65	272.25	644.2	0.1	0.2	-0.2	0.58	0.44	57.16
	736.5	1.16	272.43	736.5	0.2	-1.2	1.3	0.55	0.55	0.19
	828.8	1.53	263.71	828.7	0.1	-3.4	3.4	0.46	0.40	-9.45

<b>Company:</b>	Noble Energy Inc.- Weld County, CO (Grid North)	<b>Local Co-ordinate Reference:</b>	Well Wells Ranch AA11-646
<b>Project:</b>	Sec.11-T6N-R63W	<b>TVD Reference:</b>	WELL @ 4885.0ft (H&P 326 RKB - 30')
<b>Site:</b>	Wells Ranch AA11 Pad Sec.11-T6N-R63W	<b>MD Reference:</b>	WELL @ 4885.0ft (H&P 326 RKB - 30')
<b>Well:</b>	Wells Ranch AA11-646	<b>North Reference:</b>	Grid
<b>Wellbore:</b>	Wellbore #1	<b>Survey Calculation Method:</b>	Minimum Curvature
<b>Design:</b>	Wellbore #1	<b>Database:</b>	EDM 2003.21 Single User Db

Survey									
Measured Depth (ft)	Inclination (°)	Azimuth (°)	Vertical Depth (ft)	+N/-S (ft)	+E/-W (ft)	Vertical Section (ft)	Dogleg Rate (°/100ft)	Build Rate (°/100ft)	Turn Rate (°/100ft)
921.1	1.66	275.19	921.0	0.1	-6.0	5.9	0.37	0.14	12.44
1,013.4	1.58	266.08	1,013.3	0.1	-8.6	8.5	0.29	-0.09	-9.87
1,105.7	1.65	263.07	1,105.6	-0.1	-11.1	11.1	0.12	0.08	-3.26
1,198.0	1.61	269.54	1,197.8	-0.3	-13.8	13.7	0.20	-0.04	7.01
1,290.3	2.49	276.13	1,290.1	-0.1	-17.1	17.0	0.99	0.95	7.14
1,382.6	2.65	280.65	1,382.3	0.5	-21.1	21.1	0.28	0.17	4.90
1,474.9	3.50	284.62	1,474.5	1.6	-26.0	26.0	0.95	0.92	4.30
1,567.3	4.31	290.70	1,566.6	3.6	-31.9	32.1	0.98	0.88	6.59
1,659.6	4.79	287.27	1,658.6	5.9	-38.9	39.2	0.60	0.52	-3.72
1,751.9	5.25	293.05	1,750.5	8.7	-46.4	46.9	0.74	0.50	6.26
1,819.0	5.41	294.39	1,817.4	11.2	-52.1	52.8	0.30	0.24	2.00
1,853.0	5.32	296.59	1,851.2	12.6	-55.0	55.8	0.66	-0.26	6.47
1,945.0	5.80	319.35	1,942.8	18.0	-61.9	63.0	2.44	0.52	24.74
2,037.0	5.93	319.71	2,034.3	25.2	-68.0	69.6	0.15	0.14	0.39
2,130.0	5.14	339.04	2,126.9	32.7	-72.6	74.7	2.16	-0.85	20.78
2,221.0	4.18	1.28	2,217.6	39.9	-73.9	76.6	2.23	-1.05	24.44
2,313.0	4.79	32.57	2,309.3	46.5	-71.8	74.9	2.70	0.66	34.01
2,406.0	4.88	31.34	2,402.0	53.1	-67.6	71.3	0.15	0.10	-1.32
2,498.0	4.44	26.15	2,493.7	59.6	-64.0	68.1	0.66	-0.48	-5.64
2,590.0	5.58	35.99	2,585.3	66.5	-59.8	64.4	1.55	1.24	10.70
2,684.0	5.41	37.05	2,678.9	73.7	-54.5	59.6	0.21	-0.18	1.13
2,779.0	5.39	36.61	2,773.5	80.9	-49.1	54.8	0.05	-0.02	-0.46
2,873.0	5.01	36.43	2,867.1	87.7	-44.1	50.2	0.40	-0.40	-0.19
2,968.0	5.01	35.99	2,961.7	94.4	-39.2	45.8	0.04	0.00	-0.46
3,063.0	4.92	35.82	3,056.4	101.1	-34.3	41.5	0.10	-0.09	-0.18
3,157.0	4.84	35.47	3,150.0	107.6	-29.7	37.3	0.09	-0.09	-0.37
3,252.0	4.62	33.01	3,244.7	114.0	-25.3	33.3	0.31	-0.23	-2.59
3,347.0	4.30	34.50	3,339.4	120.2	-21.2	29.7	0.36	-0.34	1.57
3,441.0	4.09	33.62	3,433.2	125.9	-17.3	26.2	0.23	-0.22	-0.94
3,631.0	4.84	25.45	3,622.6	138.7	-10.1	20.0	0.52	0.39	-4.30
3,726.0	5.10	25.54	3,717.2	146.2	-6.6	17.0	0.27	0.27	0.09
3,820.0	5.14	25.97	3,810.9	153.7	-2.9	13.9	0.06	0.04	0.46
3,915.0	5.10	28.70	3,905.5	161.3	1.0	10.5	0.26	-0.04	2.87
4,010.0	5.63	22.46	4,000.1	169.3	4.8	7.3	0.83	0.56	-6.57
4,104.0	5.76	24.57	4,093.6	177.8	8.5	4.2	0.26	0.14	2.24
4,199.0	6.86	25.98	4,188.0	187.3	13.0	0.4	1.17	1.16	1.48
4,294.0	6.59	25.18	4,282.4	197.3	17.8	-3.6	0.30	-0.28	-0.84
4,388.0	6.42	23.60	4,375.8	207.0	22.2	-7.3	0.26	-0.18	-1.68
4,483.0	6.29	23.34	4,470.2	216.6	26.4	-10.8	0.14	-0.14	-0.27
4,578.0	5.67	25.01	4,564.7	225.7	30.4	-14.2	0.68	-0.65	1.76
4,673.0	6.29	25.89	4,659.2	234.6	34.7	-17.8	0.66	0.65	0.93
4,767.0	5.32	26.50	4,752.7	243.1	38.9	-21.4	1.03	-1.03	0.65
4,862.0	6.42	19.03	4,847.2	252.1	42.5	-24.4	1.41	1.16	-7.86
4,957.0	5.58	23.16	4,941.7	261.4	46.1	-27.3	0.99	-0.88	4.35
5,052.0	6.77	21.67	5,036.1	270.8	50.0	-30.5	1.26	1.25	-1.57
5,147.0	6.24	21.23	5,130.5	280.8	53.9	-33.7	0.56	-0.56	-0.46
5,241.0	5.98	24.13	5,224.0	290.1	57.8	-36.9	0.43	-0.28	3.09
5,336.0	5.58	25.27	5,318.5	298.8	61.8	-40.3	0.44	-0.42	1.20
5,431.0	6.29	34.50	5,413.0	307.2	66.7	-44.6	1.25	0.75	9.72
5,525.0	5.32	36.26	5,506.5	315.0	72.2	-49.5	1.05	-1.03	1.87
5,620.0	5.89	39.60	5,601.0	322.3	77.9	-54.7	0.69	0.60	3.52
5,715.0	7.96	34.15	5,695.3	331.5	84.7	-60.8	2.28	2.18	-5.74
5,810.0	7.12	32.57	5,789.5	341.9	91.6	-66.9	0.91	-0.88	-1.66
5,904.0	5.98	28.79	5,882.9	351.1	97.0	-71.7	1.30	-1.21	-4.02

<b>Company:</b>	Noble Energy Inc.- Weld County, CO (Grid North)	<b>Local Co-ordinate Reference:</b>	Well Wells Ranch AA11-646
<b>Project:</b>	Sec.11-T6N-R63W	<b>TVD Reference:</b>	WELL @ 4885.0ft (H&P 326 RKB - 30')
<b>Site:</b>	Wells Ranch AA11 Pad Sec.11-T6N-R63W	<b>MD Reference:</b>	WELL @ 4885.0ft (H&P 326 RKB - 30')
<b>Well:</b>	Wells Ranch AA11-646	<b>North Reference:</b>	Grid
<b>Wellbore:</b>	Wellbore #1	<b>Survey Calculation Method:</b>	Minimum Curvature
<b>Design:</b>	Wellbore #1	<b>Database:</b>	EDM 2003.21 Single User Db

Survey									
Measured Depth (ft)	Inclination (°)	Azimuth (°)	Vertical Depth (ft)	+N/-S (ft)	+E/-W (ft)	Vertical Section (ft)	Dogleg Rate (°/100ft)	Build Rate (°/100ft)	Turn Rate (°/100ft)
5,999.0	10.11	11.39	5,977.0	363.6	101.1	-74.9	5.00	4.35	-18.32
6,094.0	17.99	6.38	6,069.0	386.4	104.4	-76.5	8.39	8.29	-5.27
6,188.0	19.74	354.69	6,158.0	416.6	104.5	-74.5	4.42	1.86	-12.44
6,283.0	22.11	336.32	6,246.8	449.0	95.8	-63.5	7.31	2.49	-19.34
6,378.0	28.92	314.26	6,332.7	481.5	72.1	-37.6	12.20	7.17	-23.22
6,473.0	32.75	295.89	6,414.5	508.9	32.4	4.0	10.65	4.03	-19.34
6,567.0	41.14	280.86	6,489.7	525.9	-21.0	58.5	13.06	8.93	-15.99
6,662.0	47.34	276.11	6,557.7	535.5	-86.5	124.5	7.40	6.53	-5.00
6,757.0	53.32	276.64	6,618.3	543.6	-159.1	197.5	6.31	6.29	0.56
6,851.0	61.54	276.73	6,668.9	552.8	-237.8	276.6	8.75	8.74	0.10
6,946.0	64.70	277.43	6,711.8	563.3	-321.8	361.2	3.39	3.33	0.74
7,041.0	71.30	273.91	6,747.4	571.9	-409.4	449.2	7.75	6.95	-3.71
7,135.0	84.04	271.10	6,767.5	575.9	-501.0	540.8	13.86	13.55	-2.99
7,230.0	90.29	271.63	6,772.2	578.1	-595.8	635.5	6.60	6.58	0.56
7,243.0	90.37	271.54	6,772.1	578.5	-608.8	648.5	0.93	0.62	-0.69
7,337.0	89.05	270.05	6,772.6	579.8	-702.8	742.3	2.12	-1.40	-1.59
7,432.0	89.41	271.37	6,773.8	581.0	-797.7	837.2	1.44	0.38	1.39
7,524.0	89.71	271.89	6,774.5	583.6	-889.7	929.1	0.65	0.33	0.57
7,617.0	90.99	271.45	6,774.0	586.3	-982.7	1,022.0	1.46	1.38	-0.47
7,709.0	91.03	271.37	6,772.4	588.5	-1,074.6	1,113.9	0.10	0.04	-0.09
7,800.0	90.68	271.10	6,771.0	590.5	-1,165.6	1,204.8	0.49	-0.38	-0.30
7,891.0	90.64	271.10	6,769.9	592.3	-1,256.6	1,295.6	0.04	-0.04	0.00
7,983.0	90.64	269.70	6,768.9	592.9	-1,348.6	1,387.4	1.52	0.00	-1.52
8,075.0	90.81	270.31	6,767.8	592.9	-1,440.5	1,479.2	0.69	0.18	0.66
8,259.0	91.43	270.05	6,764.2	593.5	-1,624.5	1,662.7	0.37	0.34	-0.14
8,351.0	91.17	268.91	6,762.1	592.7	-1,716.5	1,754.4	1.27	-0.28	-1.24
8,443.0	88.79	268.64	6,762.1	590.7	-1,808.4	1,846.0	2.60	-2.59	-0.29
8,535.0	88.26	267.85	6,764.5	587.9	-1,900.4	1,937.5	1.03	-0.58	-0.86
8,628.0	88.84	268.73	6,766.8	585.1	-1,993.3	2,030.0	1.13	0.62	0.95
8,720.0	89.80	271.01	6,767.9	584.9	-2,085.3	2,121.7	2.69	1.04	2.48
8,811.0	90.24	271.01	6,767.9	586.5	-2,176.3	2,212.6	0.48	0.48	0.00
8,906.0	90.73	271.10	6,767.1	588.2	-2,271.3	2,307.4	0.52	0.52	0.09
9,001.0	90.90	270.84	6,765.7	589.8	-2,366.2	2,402.3	0.33	0.18	-0.27
9,096.0	89.00	269.61	6,765.8	590.2	-2,461.2	2,497.1	2.38	-2.00	-1.29
9,191.0	89.32	270.05	6,767.2	589.9	-2,556.2	2,591.8	0.57	0.34	0.46
9,285.0	89.30	269.61	6,768.3	589.7	-2,650.2	2,685.5	0.47	-0.02	-0.47
9,475.0	88.66	269.43	6,771.7	588.1	-2,840.2	2,874.9	0.35	-0.34	-0.09
9,664.0	87.87	268.99	6,777.4	585.5	-3,029.1	3,063.1	0.48	-0.42	-0.23
9,759.0	88.31	268.20	6,780.6	583.1	-3,124.0	3,157.6	0.95	0.46	-0.83
9,853.0	89.23	269.34	6,782.6	581.1	-3,217.9	3,251.2	1.56	0.98	1.21
9,948.0	90.86	269.87	6,782.5	580.5	-3,312.9	3,345.9	1.80	1.72	0.56
10,043.0	92.48	270.31	6,779.8	580.6	-3,407.9	3,440.6	1.77	1.71	0.46
10,138.0	92.04	268.20	6,776.0	579.4	-3,502.8	3,535.2	2.27	-0.46	-2.22
10,327.0	91.12	266.88	6,770.8	571.3	-3,691.5	3,722.9	0.85	-0.49	-0.70
10,422.0	89.05	266.27	6,770.7	565.6	-3,786.4	3,817.1	2.27	-2.18	-0.64
10,516.0	89.05	266.80	6,772.2	559.9	-3,880.2	3,910.2	0.56	0.00	0.56
10,611.0	89.01	266.62	6,773.8	554.5	-3,975.0	4,004.4	0.19	-0.04	-0.19
10,705.0	89.23	266.80	6,775.3	549.1	-4,068.8	4,097.7	0.30	0.23	0.19
10,800.0	89.67	267.32	6,776.2	544.2	-4,163.7	4,191.9	0.72	0.46	0.55
10,989.0	89.67	267.23	6,777.3	535.2	-4,352.5	4,379.6	0.05	0.00	-0.05
11,179.0	91.03	266.80	6,776.1	525.3	-4,542.2	4,568.1	0.75	0.72	-0.23
11,273.0	89.50	266.53	6,775.7	519.8	-4,636.1	4,661.3	1.65	-1.63	-0.29
11,368.0	89.45	265.30	6,776.6	513.1	-4,730.8	4,755.4	1.30	-0.05	-1.29

<b>Company:</b>	Noble Energy Inc.- Weld County, CO (Grid North)	<b>Local Co-ordinate Reference:</b>	Well Wells Ranch AA11-646
<b>Project:</b>	Sec.11-T6N-R63W	<b>TVD Reference:</b>	WELL @ 4885.0ft (H&P 326 RKB - 30')
<b>Site:</b>	Wells Ranch AA11 Pad Sec.11-T6N-R63W	<b>MD Reference:</b>	WELL @ 4885.0ft (H&P 326 RKB - 30')
<b>Well:</b>	Wells Ranch AA11-646	<b>North Reference:</b>	Grid
<b>Wellbore:</b>	Wellbore #1	<b>Survey Calculation Method:</b>	Minimum Curvature
<b>Design:</b>	Wellbore #1	<b>Database:</b>	EDM 2003.21 Single User Db

Survey									
Measured Depth (ft)	Inclination (°)	Azimuth (°)	Vertical Depth (ft)	+N/-S (ft)	+E/-W (ft)	Vertical Section (ft)	Dogleg Rate (°/100ft)	Build Rate (°/100ft)	Turn Rate (°/100ft)
11,463.0	88.31	266.27	6,778.4	506.1	-4,825.5	4,849.4	1.58	-1.20	1.02
11,557.0	88.88	268.64	6,780.7	501.9	-4,919.4	4,942.7	2.59	0.61	2.52
11,652.0	88.88	268.99	6,782.6	500.0	-5,014.4	5,037.3	0.37	0.00	0.37
11,747.0	89.36	269.87	6,784.0	499.0	-5,109.4	5,131.9	1.06	0.51	0.93
11,842.0	88.44	268.90	6,785.9	498.0	-5,204.3	5,226.6	1.41	-0.97	-1.02
11,936.0	88.62	269.96	6,788.3	497.1	-5,298.3	5,320.3	1.14	0.19	1.13
12,125.0	89.41	271.45	6,791.5	499.4	-5,487.3	5,508.9	0.89	0.42	0.79
12,220.0	90.55	271.45	6,791.6	501.8	-5,582.2	5,603.8	1.20	1.20	0.00
12,315.0	90.80	271.10	6,790.4	503.9	-5,677.2	5,698.7	0.45	0.26	-0.37
12,504.0	90.20	270.80	6,788.8	507.0	-5,866.2	5,887.4	0.35	-0.32	-0.16
12,599.0	90.40	270.50	6,788.3	508.1	-5,961.1	5,982.2	0.38	0.21	-0.32
12,693.0	89.50	268.60	6,788.4	507.4	-6,055.1	6,075.9	2.24	-0.96	-2.02
12,787.0	90.90	270.22	6,788.1	506.4	-6,149.1	6,169.6	2.28	1.49	1.72
12,882.0	90.20	268.90	6,787.1	505.7	-6,244.1	6,264.3	1.57	-0.74	-1.39
12,977.0	89.00	268.30	6,787.8	503.4	-6,339.1	6,358.8	1.41	-1.26	-0.63
13,071.0	89.23	269.17	6,789.3	501.3	-6,433.0	6,452.4	0.96	0.24	0.93
13,165.0	89.63	270.14	6,790.2	500.7	-6,527.0	6,546.1	1.12	0.43	1.03
13,260.0	90.40	270.50	6,790.2	501.3	-6,622.0	6,640.9	0.89	0.81	0.38
13,354.0	90.50	269.90	6,789.4	501.6	-6,716.0	6,734.7	0.65	0.11	-0.64
13,449.0	91.00	270.40	6,788.2	501.8	-6,811.0	6,829.5	0.74	0.53	0.53
13,543.0	90.70	271.60	6,786.8	503.5	-6,905.0	6,923.3	1.32	-0.32	1.28
13,638.0	89.30	268.50	6,786.8	503.6	-7,000.0	7,018.1	3.58	-1.47	-3.26
13,749.0	89.10	268.10	6,788.3	500.3	-7,110.9	7,128.5	0.40	-0.18	-0.36
13,806.0	89.10	268.10	6,789.2	498.4	-7,167.9	7,185.2	0.00	0.00	0.00

Checked By: \_\_\_\_\_ Approved By: \_\_\_\_\_ Date: \_\_\_\_\_