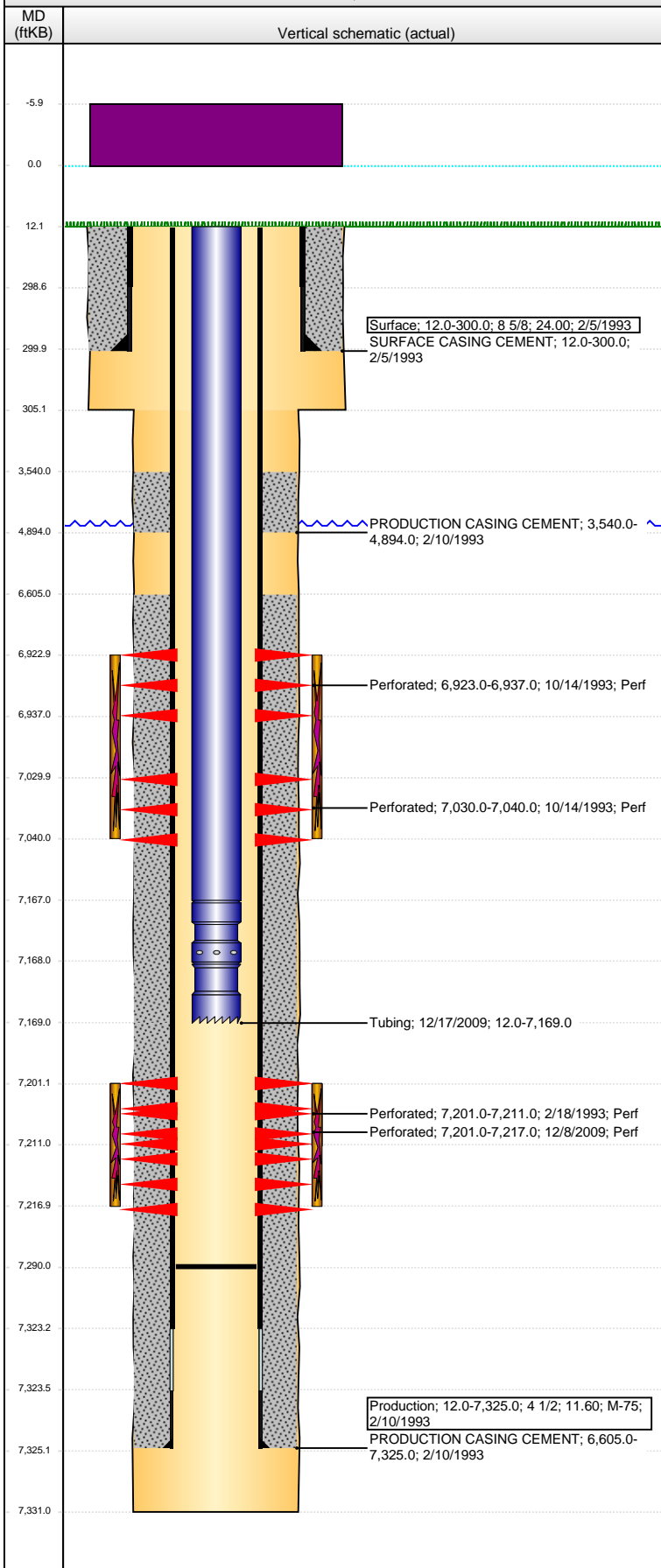


Well Name: NOFFSINGER 44-15

VERTICAL - ORIGINAL HOLE, 10/20/2015 10:26:48 AM



Well Header

API	Business Unit	District	Well Config
05-123-16529	DJ BASIN	15	VERTICAL
Original KB Elevation (ft)	KB - GL / MSL (ftKB)	Spud Date	P & A Date
4,741.00	12.00	2/5/1993	
Comment			
Directions To Well			

Congressional Location

Quarter 1	Quarter 2	Quarter 3	Quarter 4	Section	Township	Twnshp N...	Range	Rng E/W Dir
		SE	SE	15	4	N	66	W

Bottom Hole Location

North-South Distance (ft)	From N or S Line	East-West Distance (ft)	From E or W Line

Plug Back Total Depths

Date	Depth (ftKB)	Method	Com
2/17/1993	7,262.0	CASED HOLE LOG	DEPTH LOGGER ON CBL
12/10/1993	7,292.0	CASING TALLY	FLOAT COLLAR ON CASING TALLY
12/11/2009	7,290.0	TAG	CLEAN OUT TO LAND TUBING

Wellbore Sections

Section Des	Size (in)	Act Top, MD (ftKB)	Act Btm, MD (ftKB)
SURFACE	12 1/4	12.0	305.0
PRODUCTION	7 7/8	305.0	7,331.0

Zone Statuses

Zone Name	Status Date	Status	Fluid Type	Job	Prod Method
NIOBRARA	10/18/1993	PR		RECOMPLETI...	
NIOBRARA	11/11/1993	PR		RECOMPLETI...	
CODELL	3/24/1993	PR		DRILLING/CO...	
CODELL	10/13/1993	SI		RECOMPLETI...	
CODELL	11/11/1993	PR		RECOMPLETI...	
CODELL	9/4/2002	PR		RE-FRAC, 8/21...	
CODELL	1/14/2010	PR		TRI-FRAC, 11/...	

Casing Strings

Surface, 300.0ftKB

Casing Description	Run Date	OD (in)	Wt/Len (l...)	Grade	Top, MD (ft...)	MD (ftKB)
Surface	2/5/1993	8 5/8	24.00		12.0	300.0

Production, 7,325.0ftKB

Casing Description	Run Date	OD (in)	Wt/Len (l...)	Grade	Top, MD (ft...)	MD (ftKB)
Production	2/10/1993	4 1/2	11.60	M-75	12.0	7,325.0

Cement

Description	Top Depth (ftKB)	Bottom Depth (ftKB)
SURFACE CASING CEMENT	12.0	300.0
Description	Top Depth (ftKB)	Bottom Depth (ftKB)
PRODUCTION CASING CEMENT	3,540.0	4,894.0
Description	Top Depth (ftKB)	Bottom Depth (ftKB)
PRODUCTION CASING CEMENT	6,605.0	7,325.0

Tubing Strings

Tubing Description	Run Date	String...	ID (in)	Wt (lb/ft)	Grade	Len (ft)	Set De...
Tubing	12/17/2009	2 3/8	1.995	4.70	J-55	7,157.00	

Tubing Components

Item Des	OD (in)	Wt (lb/ft)	Grade	Jts	Len (ft)	Btm (ftKB)	Btm (TVD) (ftKB)
EUE 8rd Tubing	2 3/8	4.70	J-55	228	7,155.00	7,167.0	
Seal Nipple	2 3/8			1	1.00	7,168.0	
Notched collar	2 3/8			1	1.00	7,169.0	

Perforation Data

Zone	Bnch/St g	Entered Shot Total	Top (ftKB)	Btm (ftKB)	Date
NIOBRARA, ORIGINAL HOLE	A	7	6,923.00	6,937.00	10/14/1993
NIOBRARA, ORIGINAL HOLE	B	10	7,030.00	7,040.00	10/14/1993
CODELL, ORIGINAL HOLE		20	7,201.00	7,211.00	2/18/1993
CODELL, ORIGINAL HOLE		32	7,201.00	7,217.00	12/8/2009

Well Name: NOFFSINGER 44-15

VERTICAL - ORIGINAL HOLE, 10/20/2015 10:26:50 AM

Stimulations & Treatments

Date	Zone	Primary Job Type
2/23/1993	CODELL, ORIGINAL HOLE	DRILLING/COMPLETION - ORIGINAL
Technical Result		
Tech Result Details		
Tech Result Note		
Comment		
Date	Zone	Primary Job Type
10/15/1993	NIOBRARA, ORIGINAL HOLE	RECOMPLETION
Technical Result		
Tech Result Details		
Tech Result Note		
Comment		
Date	Zone	Primary Job Type
8/26/2002	CODELL, ORIGINAL HOLE	RE-FRAC
Technical Result		
Tech Result Details		
Tech Result Note		
Comment		
Date	Zone	Primary Job Type
12/11/2009	CODELL, ORIGINAL HOLE	TRI-FRAC
Technical Result		
Tech Result Details		
Tech Result Note		
Comment		

Other In Hole

Run Date	Des	OD (in)	Top (ftKB)	Btm (ftKB)

Logs

Date	Type	Top, MD (ftKB)	Btm, MD (ftKB)
2/10/1993	COMPENSATED DENSITY	4,000.0	7,310.0
2/17/1993	CEMENT BOND	3,430.0	7,256.0

