

T7S, R97W, 6th P.M.

Caerus Oil & Gas LLC

PUCKETT #11A-12 (SURFACE LOCATION)
SE 1/4 SE 1/4, SECTION 2, T7S, R97W, 6th P.M.
GARFIELD COUNTY, COLORADO

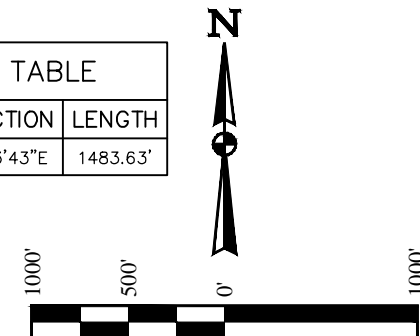
BASIS OF BEARINGS

BASIS OF BEARINGS IS A G.P.S. OBSERVATION

BASIS OF ELEVATION

SPOT ELEVATION AT THE NORTHWEST CORNER OF SECTION 30,
T5S, R95W, 6th P.M. TAKEN FROM THE FORKED GULCH
QUADRANGLE, COLORADO, GARFIELD COUNTY, 7.5 MINUTE SERIES
(TOPOGRAPHICAL MAP) PUBLISHED BY THE UNITED STATES
DEPARTMENT OF THE INTERIOR, GEOLOGICAL SURVEY. SAID
ELEVATION IS MARKED AS BEING 5966 FEET.

LINE TABLE		
LINE	DIRECTION	LENGTH
L1	S20°53'43"E	1483.63'



1923 Brass Cap,
0.8' High, Pile of
Stones, Steel Post
Lat: 39.474592°
Long: 108.177997°

CERTIFICATE

THIS IS TO CERTIFY THAT THE ABOVE PLAT WAS PREPARED FROM FIELD
NOTES OF ACTUAL SURVEYS MADE BY ME OR UNDER MY SUPERVISION
AND THAT THE SAME ARE TRUE AND CORRECT TO THE BEST OF MY
KNOWLEDGE AND BELIEF.

REGISTERED LAND SURVEYOR
REGISTRATION NO. 38130
STATE OF COLORADO
10-12-15

1923 Brass Cap,
0.8 High, Steel Post
Lat: 39.467342°
Long: 108.177942°

1920 Brass Cap,
1.5' High
Lat: 39.481792°
Long: 108.196089°

1920 Brass Cap,
0.5' High
Lat: 39.481794°
Long: 108.187419°

1920 Brass Cap,
0.6' High, Steel
Post
Lat: 39.481786°
Long: 108.178033°

S89°52'11"W - 2626.80' (Meas.) N89°53'56"W - 2650.16' (Meas.)

T6S
T7S

TRACT 68

TRACT 65

TRACT 69

TRACT 66

2

NOTE:
THE PROPOSED TARGET BOTTOM HOLE FOR
THIS WELL IS LOCATED IN THE NW 1/4 NW
1/4 OF SECTION 12, T7S, R97W, 6th P.M. AT
339' FNL 191' FWL. IT BEARS S20°53'43"E
1483.63' FROM THE PROPOSED WELLHEAD.

LOT 8

LOT 7

LOT 6

LOT 5

PUCKETT #11A-12

Elev. Ungraded Ground = 8430.7'

333'
1046'

Target
Bottom Hole

N89°42'45"W - 2654.08' (Meas.)

N89°53'38"W - 2637.78' (Meas.)

1923 Brass Cap,
1.5' High
Lat: 39.467408°
Long: 108.196058°

1923 Brass Cap,
2.0' High
Lat: 39.467350°
Long: 108.187283°

LEGEND:

- = 90° SYMBOL
- = PROPOSED WELLHEAD.
- = TARGET BOTTOM HOLE.
- ▲ = SECTION CORNERS LOCATED.

PDOP = 1.2

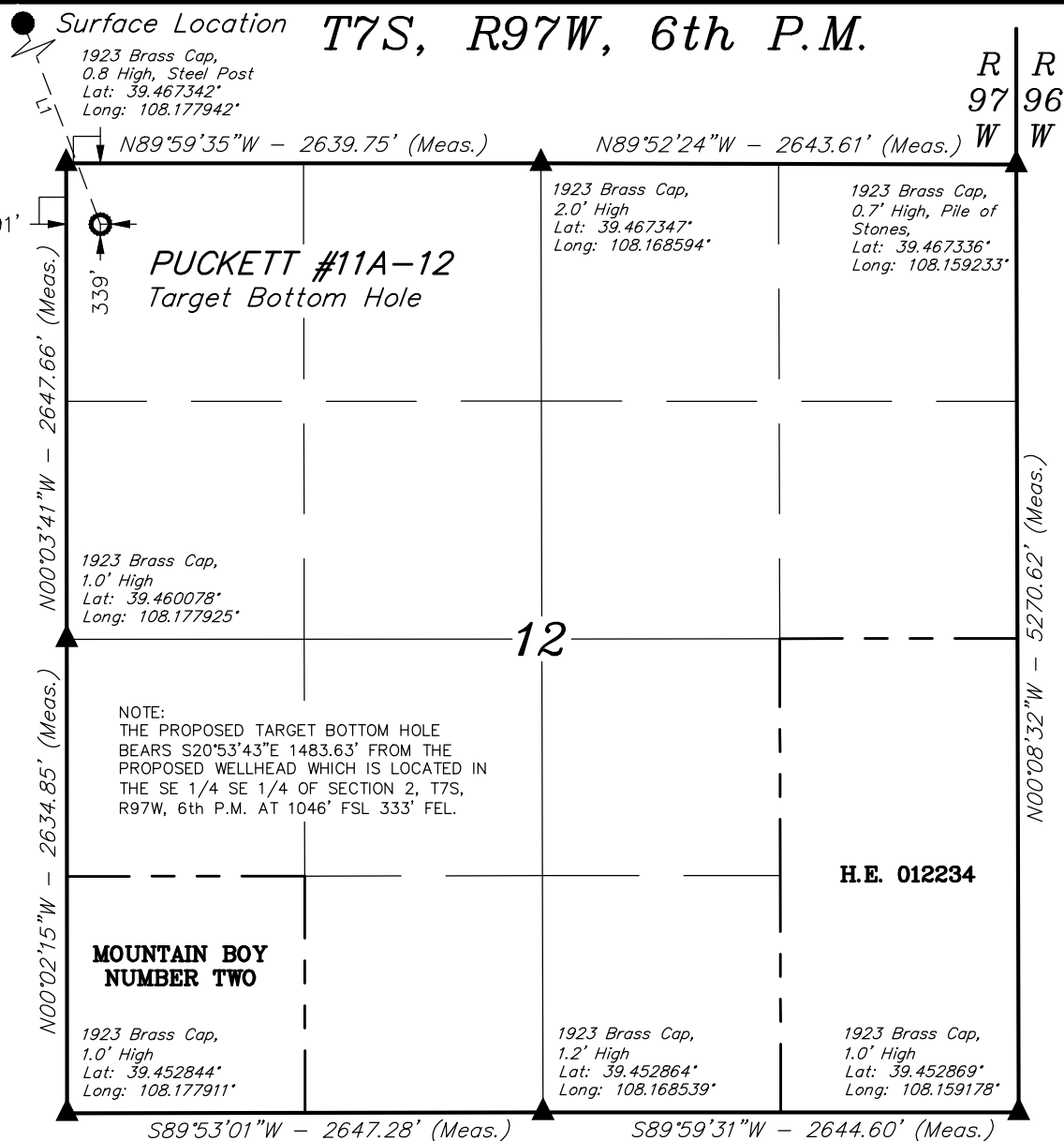
NAD 83 (SURFACE LOCATION)	
LATITUDE = 39°28'12.78" (39.470217)	
LONGITUDE = 108°10'44.91" (108.179142)	
NAD 27 (SURFACE LOCATION)	
LATITUDE = 39°28'12.86" (39.470239)	
LONGITUDE = 108°10'42.62" (108.178506)	
UTM NAD 27 ZONE 12	
N: 14345618.41 E: 2436734.02	



UELS, LLC
Corporate Office * 85 South 200 East
Vernal, UT 84078 * (435) 789-1017

SURVEYED BY: BRADEN BOX, J.C.	DATE: 08-21-14
DRAWN BY: M.D.	DATE DRAWN: 09-16-14
SCALE: 1" = 1000'	REVISED: 10-12-15 M.O.E.

WELL LOCATION PLAT



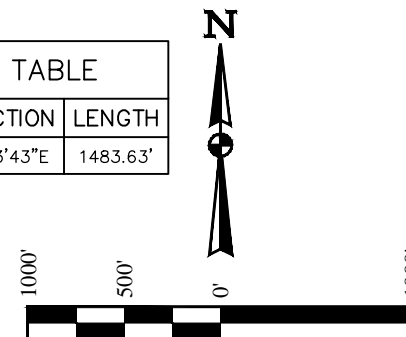
Caerus Oil & Gas LLC

PUCKETT #11A-12 (TARGET BOTTOM HOLE)
NW 1/4 NW 1/4, SECTION 12, T7S, R97W, 6th P.M.
GARFIELD COUNTY, COLORADO

BASIS OF BEARINGS
BASIS OF BEARINGS IS A G.P.S. OBSERVATION
BASIS OF ELEVATION

SPOT ELEVATION AT THE NORTHWEST CORNER OF SECTION 30,
T5S, R95W, 6th P.M. TAKEN FROM THE FORKED GULCH
QUADRANGLE, COLORADO, GARFIELD COUNTY, 7.5 MINUTE SERIES
(TOPOGRAPHICAL MAP) PUBLISHED BY THE UNITED STATES
DEPARTMENT OF THE INTERIOR, GEOLOGICAL SURVEY. SAID
ELEVATION IS MARKED AS BEING 5966 FEET.

LINE TABLE		
LINE	DIRECTION	LENGTH
L1	S20°53'43"E	1483.63'



CERTIFICATE

THIS IS TO CERTIFY THAT THE ABOVE PLAT WAS PREPARED FROM FIELD
NOTES OF ACTUAL SURVEYS MADE BY ME OR UNDER MY SUPERVISION
AND THAT THE SAME ARE TRUE AND CORRECT TO THE BEST OF MY
KNOWLEDGE AND BELIEF.

COLORADO LICENSED
PROFESSIONAL LAND SURVEYOR
38130
HAROLD MARSHALL
REGISTERED LAND SURVEYOR
REGISTRATION NO. 38130
STATE OF COLORADO 10-12-15

LEGEND:

- = 90° SYMBOL
- = PROPOSED WELLHEAD.
- = TARGET BOTTOM HOLE.
- ▲ = SECTION CORNERS LOCATED.

NAD 83 (TARGET BOTTOM HOLE)
LATITUDE = 39°27'59.09" (39.466414)
LONGITUDE = 108°10'38.15" (108.177264)
NAD 27 (TARGET BOTTOM HOLE)
LATITUDE = 39°27'59.17" (39.466436)
LONGITUDE = 108°10'35.86" (108.176628)
UTM NAD 27 ZONE 12
N: 14344250.00 E: 2437307.40



UELS, LLC
Corporate Office * 85 South 200 East
Vernal, UT 84078 * (435) 789-1017

SURVEYED BY: BRADEN BOX, J.C.	DATE: 08-21-14
DRAWN BY: M.D.	DATE DRAWN: 09-16-14
SCALE: 1" = 1000'	REVISED: 10-12-15 M.O.E.

WELL LOCATION PLAT