



October 14, 2015

VIA ELECTRONIC TRANSMITTAL

Director Matt Lepore  
Colorado Oil and Gas Conservation Commission  
1120 Lincoln Street Suite 801  
Denver, Colorado 80203

RE: Rule 318.A.e.  
TC Country Club West C1-9-11  
TC Country Club West 1-9-11  
TC Country Club West 2-9-11  
TC Country Club West C2-9-11  
TC Country Club West 3-9-11  
TC Country Club West 4-9-11  
TC Country Club West C3-9-11  
TC Country Club West 5-9-11

Surface Location: SENE, Section 8, Township 5 North, Range 66 West, Weld County, CO

Dear Mr. Lepore,

Extraction Oil and Gas is planning to drill the captioned horizontal wells in accordance with the provision of COGCC Rule 318A.e.

The proposed wellbore spacing unit consists of:

Sec.9-5N-66W: N/2  
Sec.10-5N-66W: N/2  
Sec.11-5N-66W: NW/4

The spacing unit is an 800-acre wellbore spacing unit for the Niobrara and Codell formations.

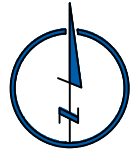
Extraction Oil and Gas hereby certifies to the Director that all Owners within the proposed spacing unit above were notified and 30 days have passed without objection.

If you have any questions or issues regarding this permit, please contact Alyssa Andrews at 720-420-5749.

Respectfully,

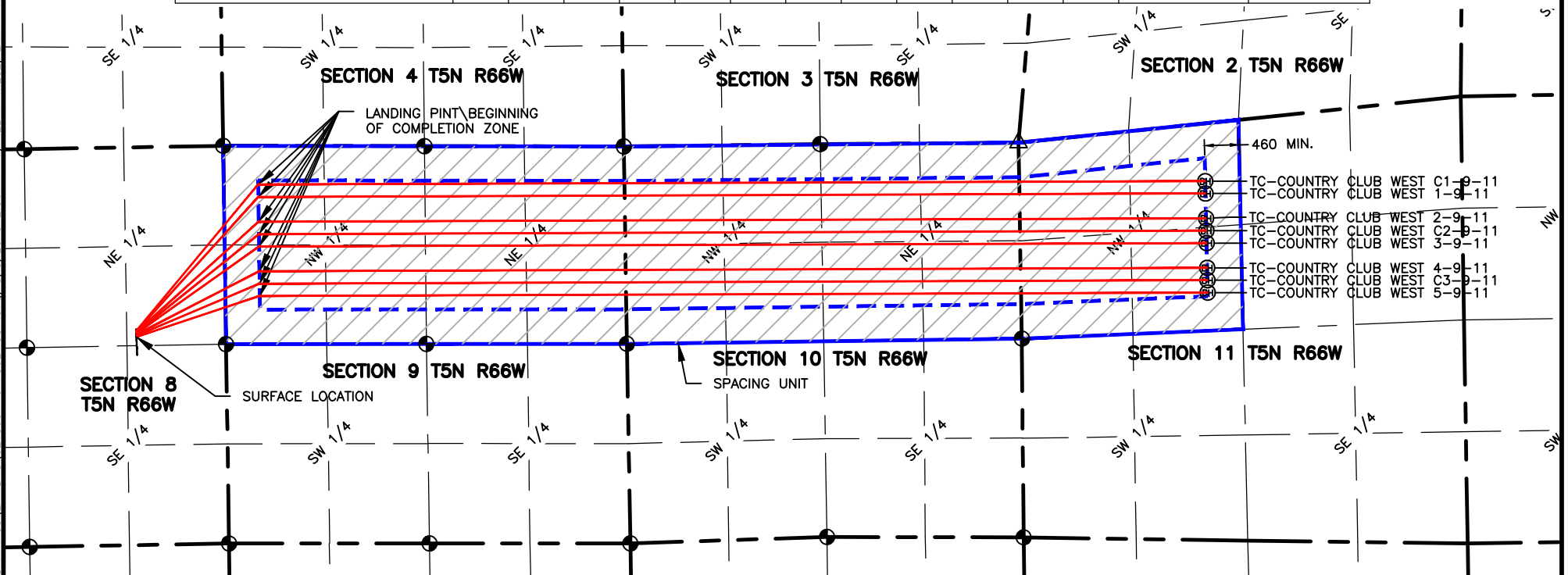
Alyssa Andrews  
Agent for Extraction Oil and Gas

**NAME: COUNTRY CLUB WEST**  
**SPACING UNIT: N/2 SECTION 9; N/2 SEC 10; NW/4 SEC 11; T5N, R66W**  
**UNIT ACREAGE: 800**



2000  
 SCALE: 1"= 2000'  
 U.S. SURVEY FEET

WELL NAME	SURFACE LOCATION				LANDING POINT\BEGIN HORIZONTAL COMPLETION ZONE				BOTTOM HOLE\END HORIZONTAL COMPLETION ZONE				COMPLETION ZONE BEARING	COMPLETION ZONE LENGTH
	DIST.	DIR.	DIST.	DIR.	DIST.	DIR.	DIST.	DIR.	DIST.	DIR.	DIST.	DIR.		
TC-COUNTRY CLUB WEST C1-9-11	2446'	FNL	1195'	FEL	515'	FNL	460'	FWL	767'	FNL	2480'	FWL	N89°47'44"E	12627.32'
TC-COUNTRY CLUB WEST 1-9-11	2454'	FNL	1195'	FEL	680'	FNL	460'	FWL	931'	FNL	2481'	FWL	N89°47'44"E	12628.54'
TC-COUNTRY CLUB WEST 2-9-11	2462'	FNL	1195'	FEL	1010'	FNL	460'	FWL	1260'	FNL	2482'	FWL	N89°47'44"E	12630.99'
TC-COUNTRY CLUB WEST C2-9-11	2470'	FNL	1195'	FEL	1175'	FNL	460'	FWL	1424'	FNL	2483'	FWL	N89°47'44"E	12632.21'
TC-COUNTRY CLUB WEST 3-9-11	2478'	FNL	1194'	FEL	1340'	FNL	460'	FWL	1589'	FNL	2484'	FWL	N89°47'44"E	12633.44'
TC-COUNTRY CLUB WEST 4-9-11	2494'	FNL	1194'	FEL	1670'	FNL	460'	FWL	1918'	FNL	2485'	FWL	N89°47'44"E	12635.88'
TC-COUNTRY CLUB WEST C3-9-11	2510'	FNL	1194'	FEL	1835'	FNL	460'	FWL	2082'	FNL	2486'	FWL	N89°47'44"E	12637.11'
TC-COUNTRY CLUB WEST 5-9-11	2526'	FNL	1193'	FEL	2000'	FNL	460'	FWL	2247'	FNL	2487'	FWL	N89°47'44"E	12638.33'



**LAMP RYNEARSON**  
 & ASSOCIATES

4715 Innovation Drive 970.226.0342 | P  
 Fort Collins, CO 80525 970.226.0879 | F  
[www.LRA-Inc.com](http://www.LRA-Inc.com)

Proposed Spacing Unit Exhibit  
 Triple Creek Directional  
 Country Club West

**LEGEND**

- ALIQUOT CORNER
- BOTTOM HOLE
- COMPUTED ALIQUOT CORNER
- SECTION LINE
- QUARTER SECTION LINE
- SIXTEENTH LINE

drawn by KJW date 8/5/15 cogcc id 436824 project - task number 0213054.01 book and page surface - location SE/4, NE/4, SEC 8 T5N R66W