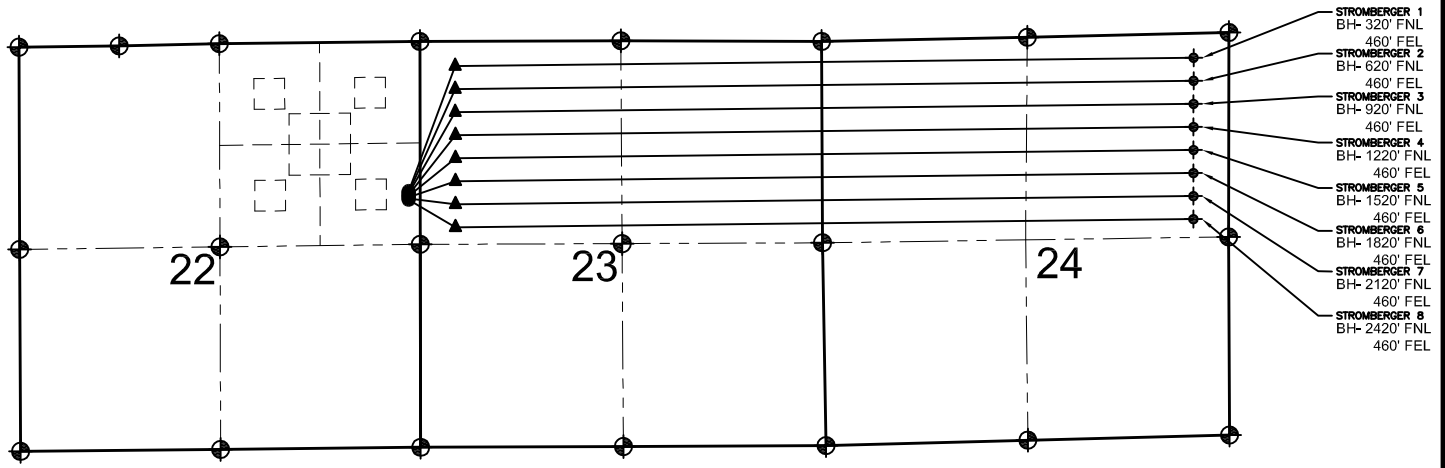
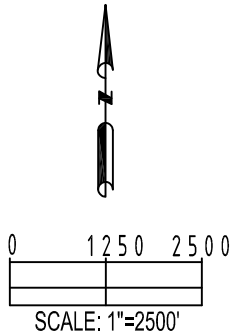


# STROMBERGER 22-E PAD MULTI-WELL PLAN



STROMBERGER 1  
BH- 320' FNL  
460' FEL  
STROMBERGER 2  
BH- 620' FNL  
460' FEL  
STROMBERGER 3  
BH- 920' FNL  
460' FEL  
STROMBERGER 4  
BH- 1220' FNL  
460' FEL  
STROMBERGER 5  
BH- 1520' FNL  
460' FEL  
STROMBERGER 6  
BH- 1820' FNL  
460' FEL  
STROMBERGER 7  
BH- 2120' FNL  
460' FEL  
STROMBERGER 8  
BH- 2420' FNL  
460' FEL



## LEGEND

- ⊕ = EXISTING MONUMENT
- = CALCULATED POSITION
- = PROPOSED WELL
- ▲ = LANDING POINT
- ◆ = BOTTOM HOLE
- ◆ = EXISTING WELL
- LP = LANDING POINT
- BH= BOTTOM HOLE

## NOTES:

- THIS FIELD SURVEY CONFORMS TO THE MINIMUM STANDARDS SET BY THE C.O.G.C.C., RULE NO. 215
- BEARINGS AND DISTANCE SHOWN HEREON ARE GRID AND BASED ON THE COLORADO STATE PLANE COORDINATE SYSTEM, NAD 83/2011 BETWEEN MONUMENTS AS LABELED HEREON AND ELEVATIONS SHOWN ARE NAVD 88, AS DERIVED BY GPS OBSERVATIONS.
- GRID DISTANCES ARE SHOWN, AS MEASURED IN THE FIELD, WITH TIES TO WELLS MEASURED PERPENDICULAR TO SECTION LINES.

## NOTES:

- STROMBERGER 1 TO BE AT 1946' FNL, 150' FEL.  
BOTTOM HOLE AT 320' FNL & 460' FEL, SEC 24.  
STROMBERGER 2 TO BE AT 1962' FNL, 150' FEL.  
BOTTOM HOLE AT 620' FNL & 460' FEL, SEC 24.  
STROMBERGER 3 TO BE AT 1978' FNL, 150' FEL.  
BOTTOM HOLE AT 920' FNL & 460' FEL, SEC 24.  
STROMBERGER 4 TO BE AT 1994' FNL, 150' FEL.  
BOTTOM HOLE AT 1220' FNL & 460' FEL, SEC 24.  
STROMBERGER 5 TO BE AT 2010' FNL, 150' FEL.  
BOTTOM HOLE AT 1520' FNL & 460' FEL, SEC 24.  
STROMBERGER 6 TO BE AT 2026' FNL, 150' FEL.  
BOTTOM HOLE AT 1820' FNL & 460' FEL, SEC 24.  
STROMBERGER 7 TO BE AT 2042' FNL, 150' FEL.  
BOTTOM HOLE AT 2120' FNL & 460' FEL, SEC 24.  
STROMBERGER 8 TO BE AT 2058' FNL, 150' FEL.  
BOTTOM HOLE AT 2420' FNL & 460' FEL, SEC 24.

PREPARED BY:



FIELD DATE:

06-24-15

DRAWING DATE:

07-22-15

BY:

JLG

CHECKED BY:

CSG

SITE NAME:

STROMBERGER 22-E PAD

SURFACE LOCATION:

SE 1/4 NE 1/4, SEC. 22, T6N, R67W, 6TH P.M.  
WELD COUNTY, COLORADO

PREPARED FOR:

