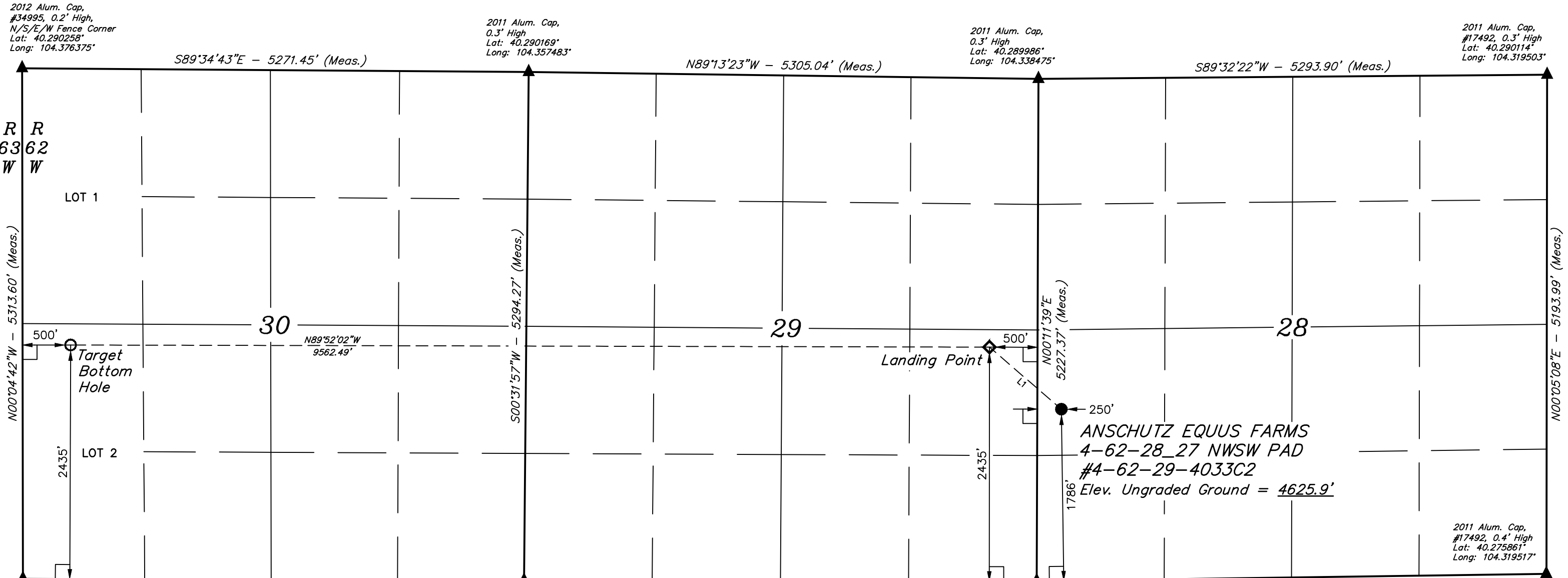


T4N, R62W, 6th P.M.

BILL BARRETT CORPORATION
ANSCHUTZ EQUUS FARMS 4-62-28_27 NWSW PAD
#4-62-29-4033C2
NW 1/4 SW 1/4, SECTION 28, T4N, R62W, 6th P.M.
WELD COUNTY, COLORADO



2011 Alum. Cap,
#38070, 0.3' Below Ground,
N/S/E/W Fence Corner
Lat: 40.275678°
Long: 104.376325°

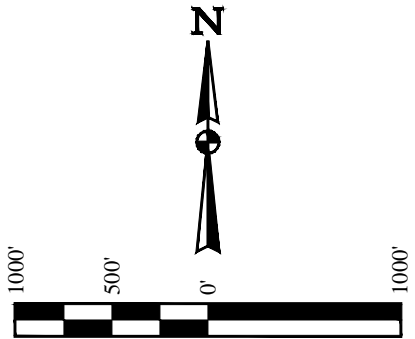
2013 Alum. Cap,
#28285, 0.3' High,
Fence E/W/S
Lat: 40.275642°
Long: 104.357639°

2014 Alum. Cap,
#28285, 0.4' High,
In Line With East Fence
Lat: 40.275642°
Long: 104.338522°

2011 Alum. Cap,
#17492, 0.4' High
Lat: 40.275861°
Long: 104.319517°

LINE TABLE		
LINE	DIRECTION	LENGTH
L1	N49°11'14"W	988.04'

CERTIFICATE
THIS IS TO CERTIFY THAT THE ABOVE PLAT WAS PREPARED FROM FIELD
NOTES OF ACTUAL SURVEYS MADE BY ME OR UNDER MY SUPERVISION,
AND THAT THE SAME ARE TRUE AND CORRECT TO THE BEST OF MY
KNOWLEDGE AND BELIEF.



- LEGEND:
- 90° SYMBOL
 - PROPOSED WELLHEAD.
 - TARGET BOTTOM HOLE.
 - LANDING POINT.
 - SECTION CORNERS LOCATED.

BASIS OF BEARINGS
BASIS OF BEARINGS IS A G.P.S. OBSERVATION

BASIS OF ELEVATION
SPOT ELEVATION LOCATED AT THE NORTHEAST CORNER OF SECTION 24, T5N, R62W, 6th P.M. TAKEN FROM THE POINT OF ROCKS, QUADRANGLE, COLORADO, WELD COUNTY, 7.5 MINUTE QUAD (TOPOGRAPHIC MAP) PUBLISHED BY THE UNITED STATES DEPARTMENT OF THE INTERIOR, GEOLOGICAL SURVEY. SAID ELEVATION IS MARKED AS BEING 4530 FEET.

NAD 83 (TARGET BOTTOM HOLE)	NAD 83 (LANDING POINT)	NAD 83 (SURFACE LOCATION)
LATITUDE = 40°16'56.48" (40.282356)	LATITUDE = 40°16'56.36" (40.282322)	LATITUDE = 40°16'49.99" (40.280553)
LONGITUDE = 104°22'28.40" (104.374556)	LONGITUDE = 104°20'25.05" (104.340292)	LONGITUDE = 104°20'15.39" (104.337608)
NAD 27 (TARGET BOTTOM HOLE)	NAD 27 (LANDING POINT)	NAD 27 (SURFACE LOCATION)
LATITUDE = 40°16'56.55" (40.282375)	LATITUDE = 40°16'56.43" (40.282342)	LATITUDE = 40°16'50.06" (40.280572)
LONGITUDE = 104°22'26.57" (104.374047)	LONGITUDE = 104°20'23.22" (104.339783)	LONGITUDE = 104°20'13.56" (104.337100)
STATE PLANE NAD 83 (CO. NORTH)	STATE PLANE NAD 83 (CO. NORTH)	STATE PLANE NAD 83 (CO. NORTH)
N: 1347696.07 E: 3313983.15	N: 1347807.43 E: 3323542.47	N: 1347172.32 E: 3324299.02
STATE PLANE NAD 27 (CO. NORTH)	STATE PLANE NAD 27 (CO. NORTH)	STATE PLANE NAD 27 (CO. NORTH)
N: 347698.64 E: 2314133.47	N: 347810.06 E: 2323692.79	N: 347174.98 E: 2324449.34

PDOP = 1.4

UELS, LLC
Corporate Office * 85 South 200 East
Vernal, UT 84078 * (435) 789-1017

SURVEYED BY: GREG WEIMER, C.J.	DATE: 04-08-15
DRAWN BY: K.B.	DATE DRAWN: 09-23-15
SCALE: 1" = 1000'	REVISED: 09-25-15

WELL LOCATION PLAT