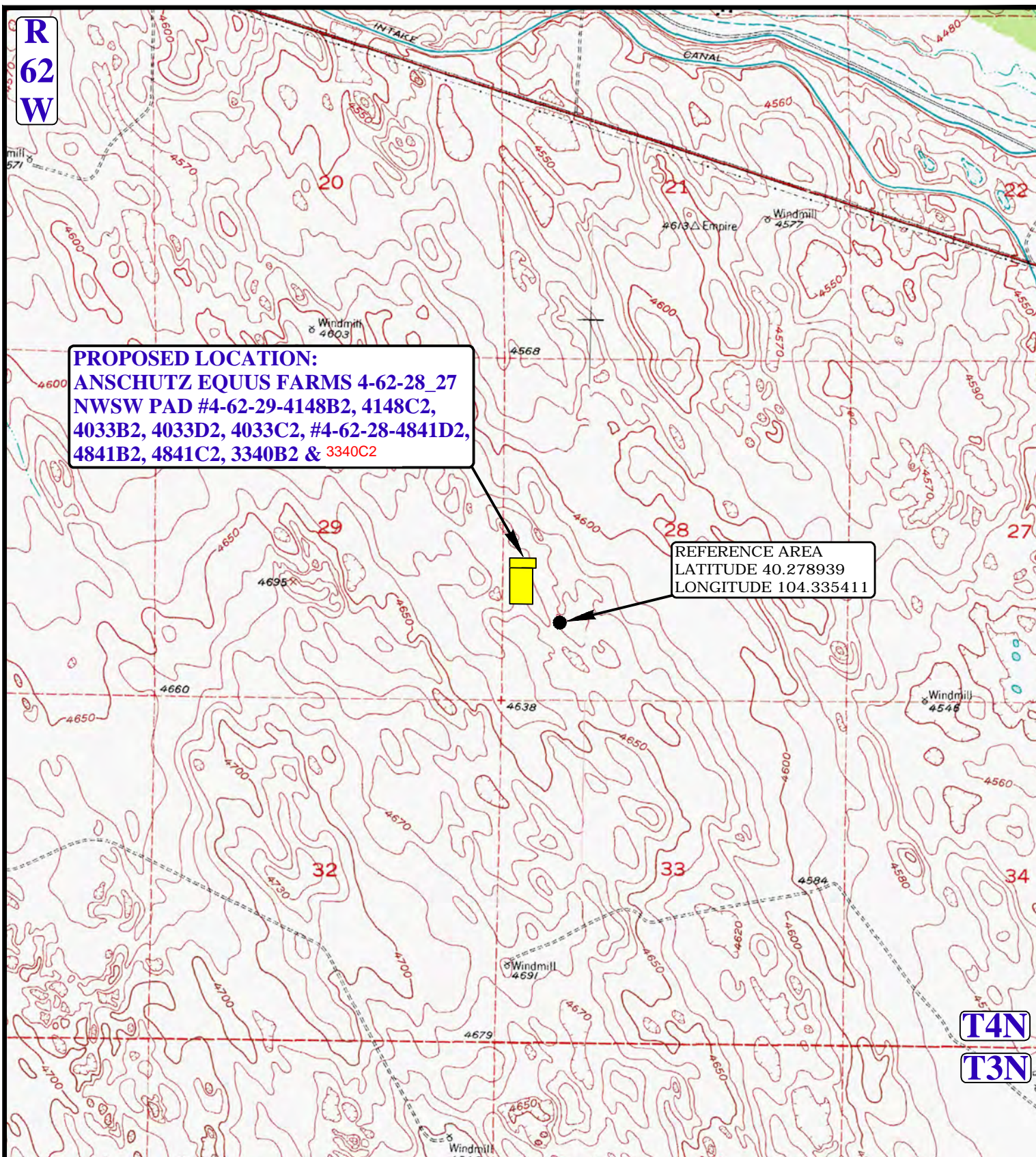


R  
62  
W



**LEGEND:**



**UELS, LLC**  
Corporate Office \* 85 South 200 East  
Vernal, UT 84078 \* (435) 789-1017



**BILL BARRETT CORPORATION**

ANSCHUTZ EQUUS FARMS 4-62-28\_27 NWSW PAD  
#4-62-29-4148B2, 4148C2, 4033B2, 4033D2, 4033C2,  
#4-62-28-4841D2, 4841B2, 4841C2, 3340B2 & 3340C2  
NW 1/4 SW 1/4, SECTION 28, T4N, R62W, 6th P.M.  
WELD COUNTY, COLORADO

DRAWN BY: J.L.G.

DATE DRAWN: 04-21-15

SCALE: 1" = 2000'

REV: 09-23-15

**REFERENCE AREA MAP**

**REF TOPO**